



FEMA

Daily Operations Briefing

Friday, October 7, 2016

8:30 a.m. EDT

Significant Activity – Oct 6 - 7



Significant Events: Hurricane Matthew

Tropical Activity:

- Atlantic – Hurricane Matthew (Category 3); Hurricane Nicole (Category 2)
- Eastern Pacific – Tropical cyclone activity not expected next 48 hours
- Central Pacific – Disturbance 1 – Low (20%)
- Western Pacific – No tropical cyclone activity affecting U.S. interests

Significant Weather:

- Flash flooding possible – Southeast to Mid-Atlantic and Central Appalachians
- Severe thunderstorms possible – coastal South Carolina
- Rain and thunderstorms – Southwest to Southern Plains and Middle Mississippi Valley; Southeast to Mid-Atlantic and Appalachians; Middle Mississippi Valley to Great Lakes
- Rain and snow – Northern Intermountain to Northern Plains
- Rain – Great Lakes Mid-Atlantic
- Critical/Elevated Fire Weather – southern CA
- Red Flag Warnings – southern CA
- Space weather – Past 24 hours – none observed; next 24 hours – none predicted

Earthquake Activity: No significant activity

Declaration Activity:

- Emergency Declaration Approved – FL, GA and SC (Hurricane Matthew)
- Emergency Declaration Request – NC (Hurricane Matthew)

Hurricane Matthew

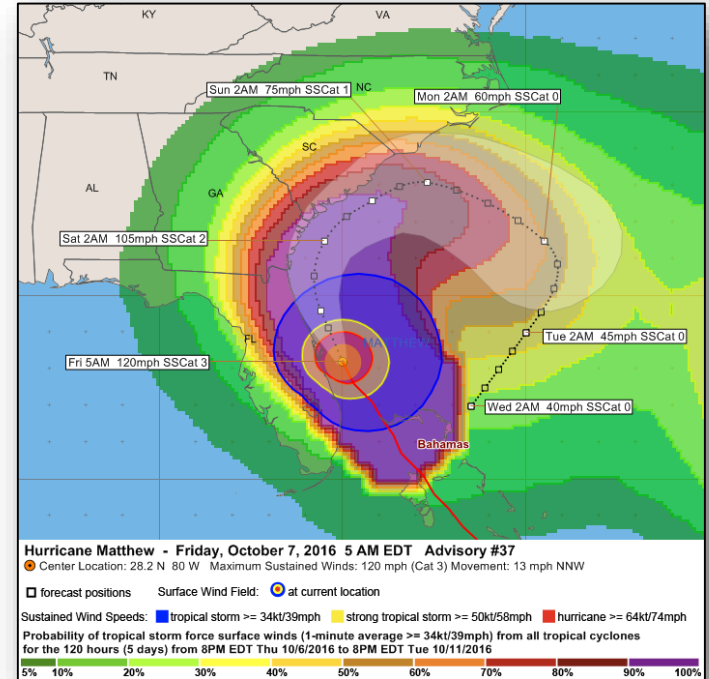


Hurricane Matthew (Category 3) (Advisory #37 UPDATED STATEMENT as of 7:00 a.m. EDT)

- Located 35 miles ENE of Cape Canaveral, FL
- Moving NNW at 14 mph
- Maximum sustained winds 120 mph
- Hurricane force Winds extend 60 miles
- Tropical storm force winds extend 185 miles
- Hurricane Warnings from Jupiter Inlet, FL to South Santee River, SC
- Tropical Storm Warnings for much of southern tip of FL

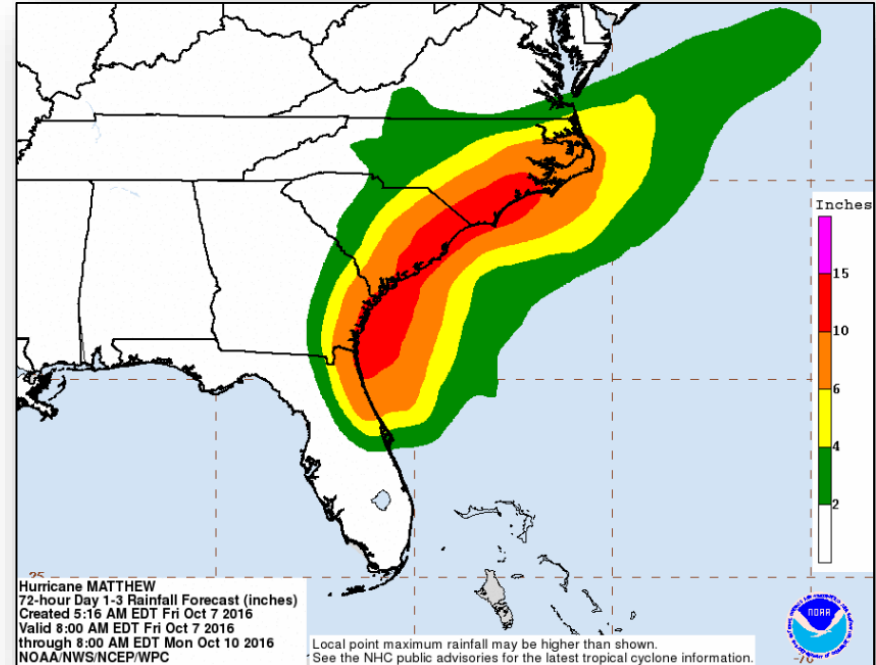
Storm Surge Forecast - heights above ground.

- Sebastian Inlet, FL to Edisto Beach, SC - 7 to 11 feet
- Edisto Beach to South Santee River, SC - 4 to 6 feet
- Jupiter Inlet to Sebastian Inlet, FL - 4 to 6 feet
- South Santee River, SC, to Cape Fear, NC - 2 to 4 feet



Rainfall Forecast – Day 1-3

- Matthew is expected to produce total rain accumulations of 8 to 12 inches over the Atlantic coast of the U.S. from central Florida to eastern North Carolina, with possible isolated maximum amounts of 15 inches
- Several smaller creeks and coastal rivers will experience moderate to major flooding



Hurricane Matthew - State/Region IV Response



FEMA

Florida:

- EOC: Full Activation / State of Emergency declared
- [Emergency Declaration FEMA-3277-EM-FL approved](#)
- Evacuations: Mandatory for [10 Counties](#)
- [Shelters: 133 open with 22,359 occupants; 42 special needs shelters with 155 occupants*](#)
- [3,500 National Guard personnel activated](#)
- [US&R FL-TF1 and FL-TF2 deployed as state resources](#)

Georgia:

- EOC: Full Activation / State of Emergency declared
- [Emergency Declaration FEMA-3379-EM-GA approved](#)
- Evacuations: Mandatory – [6 counties](#) & city of Tybee Island (pop. 3,082); Voluntary – west of I-95
- Curfews in place for numerous counties
- [Shelters: 18 open with 2,164 occupants*](#)

South Carolina:

- EOC: Full Activation / State of Emergency declared / [Emergency Declaration FEMA-3378-EM-SC approved](#)
- Evacuations: Mandatory for coastal communities ([over 175,000 evacuated](#)); [Shelters: 47 open with 2,587 occupants*](#)

North Carolina:

- EOC: Partial Activation / State of Emergency declared / Emergency Declaration requested
- Urban Search and Rescue (US&R)/Swift Water Rescue Teams activated and pre-deployed; 247 National Guard activated
- Coordination for EMS Ambulance Strike teams and EMS medical EVAC buses started
- Evacuations: Mandatory for Cape Lookout; [voluntary for Pender County. State medical support shelter open in Goldsboro](#)

FEMA Region IV:

- RRCC: Level I Full Activation/ RWC: Watch/Steady State
- IMAT-1 deployed to NC EOC
- IMAT-2 deployed to FL EOC
- LNOs deployed to FL, NC, SC & GA EOC's
- Hurricane Liaisons deployed to National Hurricane Center
- Region IV DCE deployed to FL; [Region VIII DCE deployed to SC](#)

*ARC Midnight Shelter Count as of 6:00 am EDT

Hurricane Matthew - FEMA HQs Response



FEMA HQ:

- NRCC: Level I Full Activation/ NWC: Watch/Steady State
- National IMAT-West deployed to FL EOC
- National IMAT-East 1 deployed to Atlanta, GA
- [Region V IMAT deployed to SC EOC](#)
- Region IX IMAT-2 deployed to SC EOC
- Staging areas: Albany, GA; Fort Bragg, NC; Fort A.P. Hill, VA
- MERS personnel and MCOVs supporting deployed teams, FSA, and ISB locations
- [US&R deploying to preliminary staging areas:](#)
 - [Blue IST to Atlanta, GA](#)
 - [NY-TF1 \(Type 3\) – for potential use in GA or SC](#)
 - [MO-TF1 \(Type 3\) for potential use in GA](#)
 - [MD-TF1 \(Type 3 w/HEPP-1 Cache\) to Ft. Bragg, NC](#)
 - [TN-TF1 \(Type 1\) for use in SC \(going to Ft. Bragg\)](#)
 - [VA-TF1 \(Type 1\), and VA-TF2 \(Type 1\) deploying to stage at Lake City Airport, Lake City, FL](#)
 - [OH-TF1 \(Type 1\), PA-TF1 \(Type 1\), NJ-TF1 \(Type 1\), and IN-TF1 \(Type 1 w/HEPP-3 Cache\) deploying to stage at to Lakeland, FL](#)

State	Deployed	Deployed Pending Check-In	Positions Left to Fill on Standard Open Requests
FL	217	29	33
GA	307	270	200
NC	94	30	20
SC	29	25	14
VA	36	16	3
Grand Total	683	370	270

FEMA Recovery:

- IRS Agreement activated to provide up to 1,200 agents online by October 8

FEMA Field Operations:

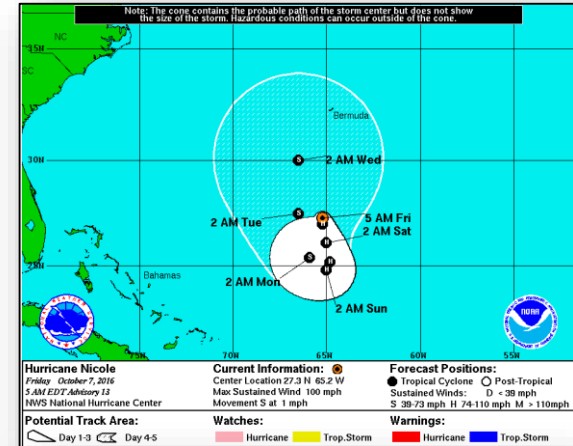
- [7 FEMA Corps teams supporting response efforts at Distribution Centers \(DCs\) and mobilization sites](#)
- [45 FEMA Corps teams trained in Disaster Survivor Assistance \(DSA\) deploying to stage in Vicksburg, MS, Baltimore, MD, and Atlanta, GA](#)
- 4 additional teams to receive Just in Time Training in DSA; anticipated arrival in field is October 16
- Incident Workforce Deployments:

Tropical Outlook – Atlantic

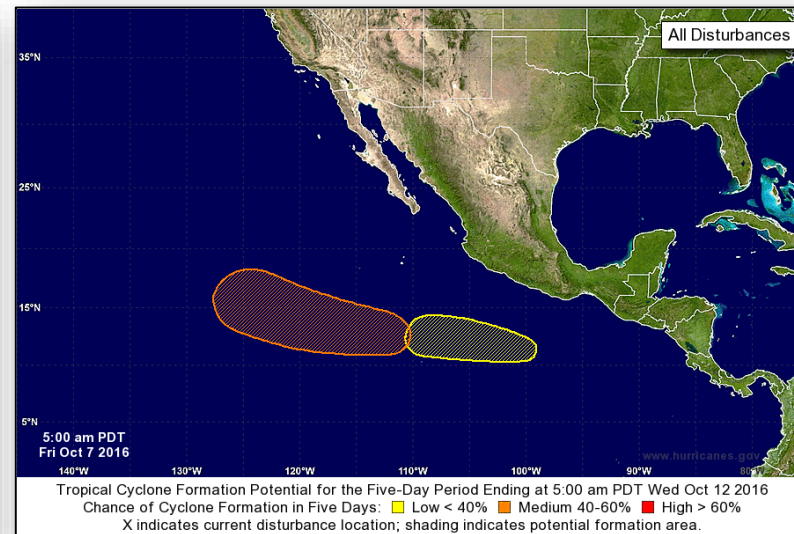
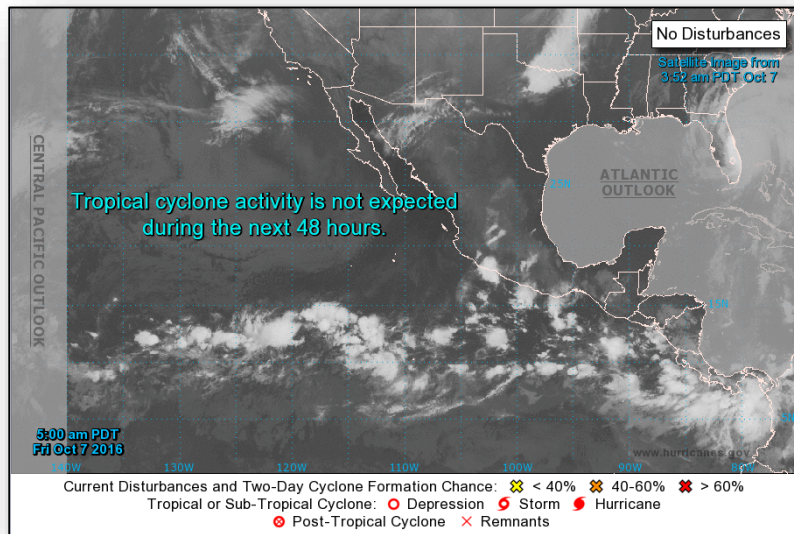


Hurricane Nicole: (Advisory 13, as of 5:00 a.m. EDT)

- Located 345 miles S of Bermuda
- Drifting S at 1 mph
- Slightly faster southward motion expected tonight and on Saturday
- Maximum sustained winds 100 mph (Category 2)
- Additional weakening is forecast next 48 hours
- Hurricane force winds extend 15 miles
- Tropical storm force winds extend 90 miles
- No threat to US territories



Tropical Outlook – Eastern Pacific

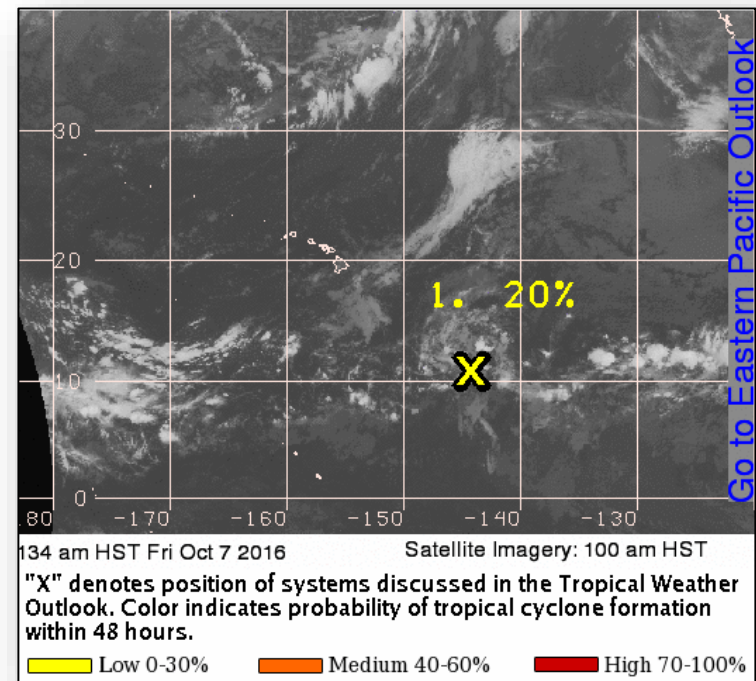


Tropical Outlook – Central Pacific

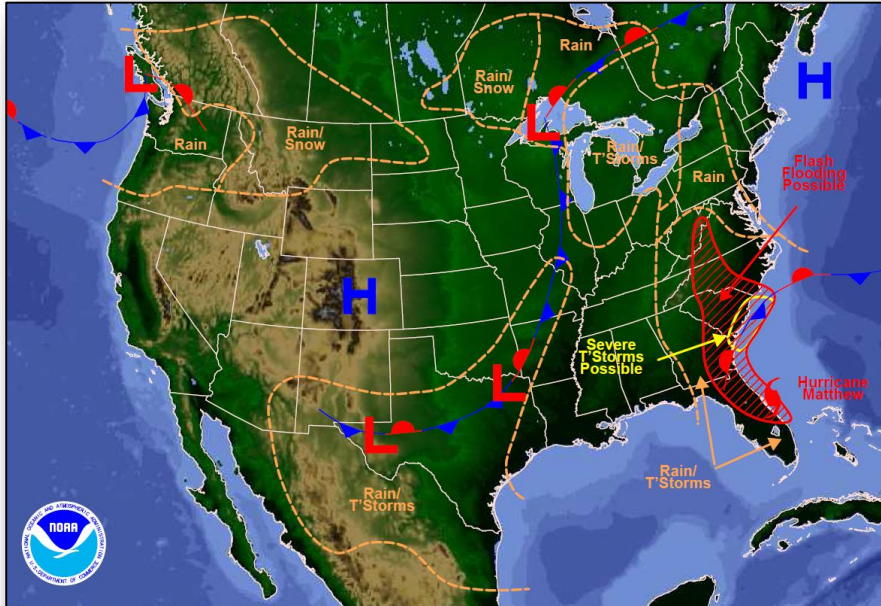


Disturbance 1: (as of 8:00 a.m. EDT)

- Located 940 miles SE of Big Island of Hawaii
- Moving W at 10 mph
- Development, if any, will be slow to occur next several days
- Formation chance through 48 hours: Low (20%)

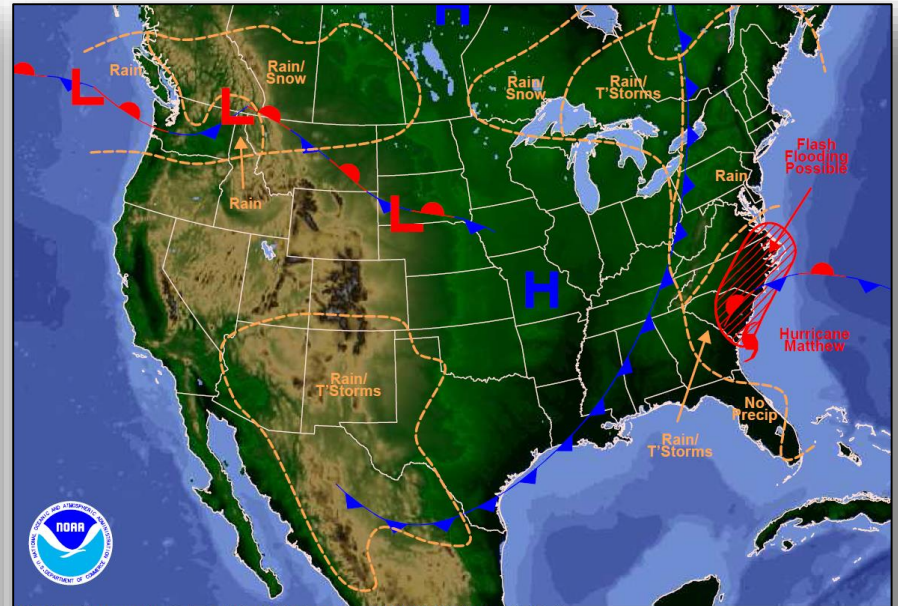


National Weather Forecast



Weather Forecast for Fri, Oct 07, 2016, issued 4:40 AM EDT
DOC/NOAA/NWS/NCEP/Weather Prediction Center
Prepared by McReynolds based on WPC, SPC and NHC forecasts

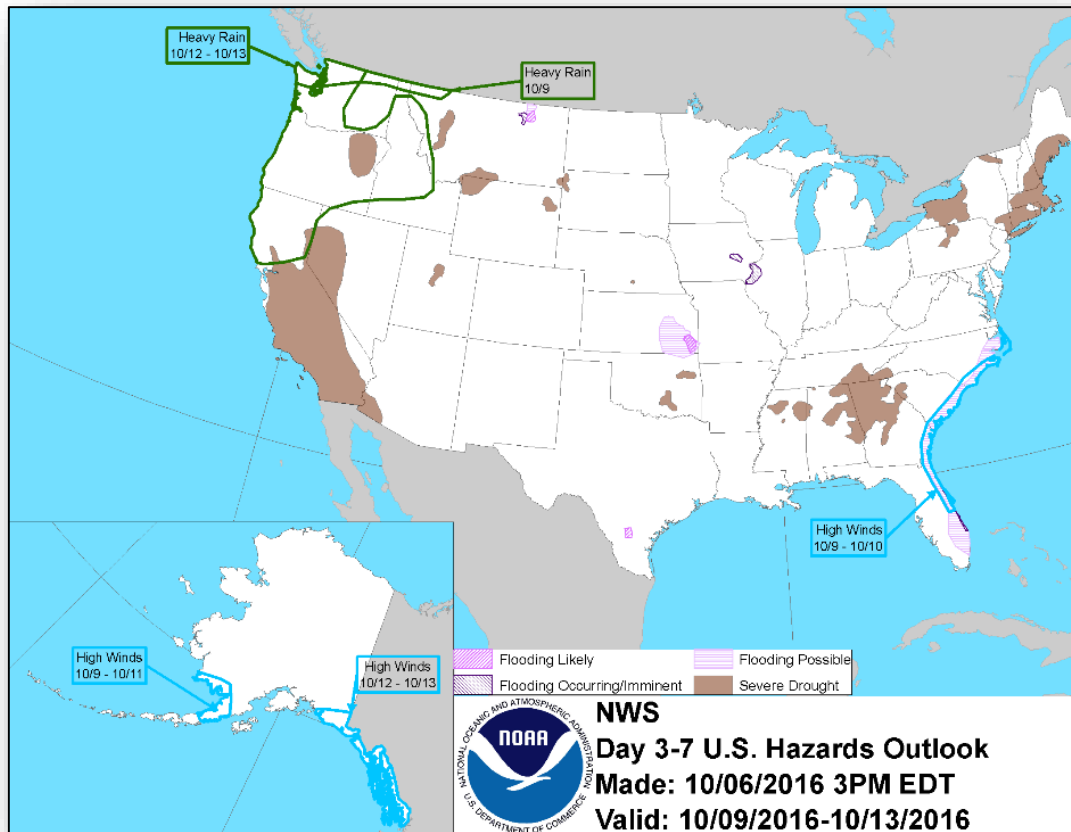
Today



Weather Forecast for Sat, Oct 08, 2016, issued 4:51 AM EDT Fri, Oct 07, 2016
DOC/NOAA/NWS/NCEP/Weather Prediction Center
Prepared by McReynolds based on WPC, SPC and NHC forecasts

Tomorrow

Hazards Outlook – Oct 9-13



Wildfire Summary



Fire Name (County)	FMAG # (Approved Date)	Acres burned	% Contained	Evacuations (Residents)	Structures			Fatalities / Injuries
					Threatened	Damaged	Destroyed	
Colorado (1)								
Beulah Hill Fire (FINAL) (Pueblo County)	5155-FM-CO (October 4, 2016)	5,232	75% (+25)	Mandatory (repopulation in progress)	740 (730 homes)	0	14 (8 homes)	0 / 0

Joint Preliminary Damage Assessments



Region	State / Location	Event	IA/PA	Number of Counties		Start – End
				Requested	Complete	
V	Wisconsin	Severe Storms and Flooding September 21 – 22, 2016	PA	12	0	10/4 – TBD
	Minnesota	Severe Storms and Flooding September 21 – continuing, 2016	PA	9	0	10/10 – TBD
			IA	4	0	10/10 – TBD
VII	Kansas	Severe Storms and Flooding September 2 – 12, 2016	PA	11	11	9/28 – 10/6

Disaster Requests & Declarations



Declaration Requests in Process		Requests APPROVED (since last report)	Requests DENIED (since last report)
2	Date Requested	4	0
Navajo Nation – DR Severe Storms and Flooding	September 21, 2016		
HI – DR Severe Storms and Flooding	September 27, 2016	Declared October 6, 2016	
NC – EM Hurricane Matthew	October 4, 2016		
SC – EM Hurricane Matthew	October 4, 2016	Declared October 6, 2016	
FL – EM Hurricane Matthew	October 5, 2016	Declared October 6, 2016	
GA – EM Hurricane Matthew	October 6, 2016	Declared October 6, 2016	

Declarations Approved



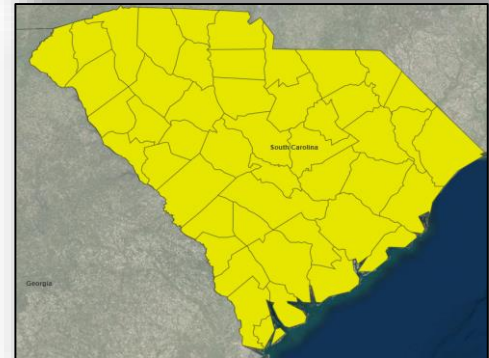
FEMA-3377-EM-FL


- Emergency Declaration approved on October 6, 2016 for State of Florida
- For Hurricane Matthew beginning October 3, 2016, and continuing
- Provides:
 - Emergency Protective Measures (Category B), limited direct federal assistance under the Public Assistance program at 75% federal funding, for 28 counties
- FCO is Terry L. Quarles



FEMA-3378-EM-SC

- Emergency Declaration approved on October 6, 2016 for State of South Carolina
- For Hurricane Matthew beginning October 4, 2016, and continuing
- Provides:
 - Emergency Protective Measures (Category B), limited to direct federal assistance under the Public Assistance program at 75% federal funding, for all 46 counties and the Catawba Indian Nation
- FCO is W. Michael Moore



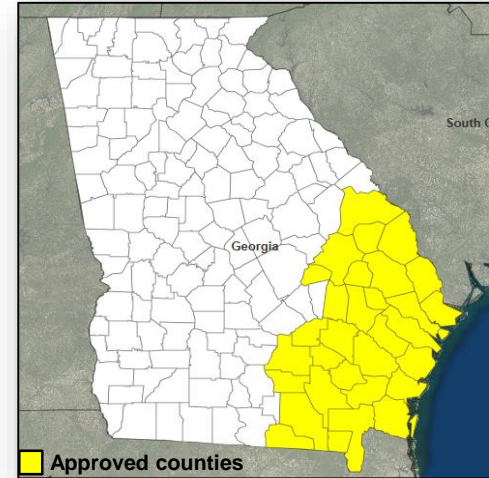
 Approved counties

Declarations Approved



FEMA-3379-EM-GA

- Emergency Declaration approved on October 6, 2016 for State of Georgia
- For Hurricane Matthew beginning October 4, 2016, and continuing
- Provides:
 - Emergency Protective Measures (Category B) limited to direct federal assistance under the Public Assistance program at 75% federal funding, for 30 counties
- FCO is Warren J. Riley

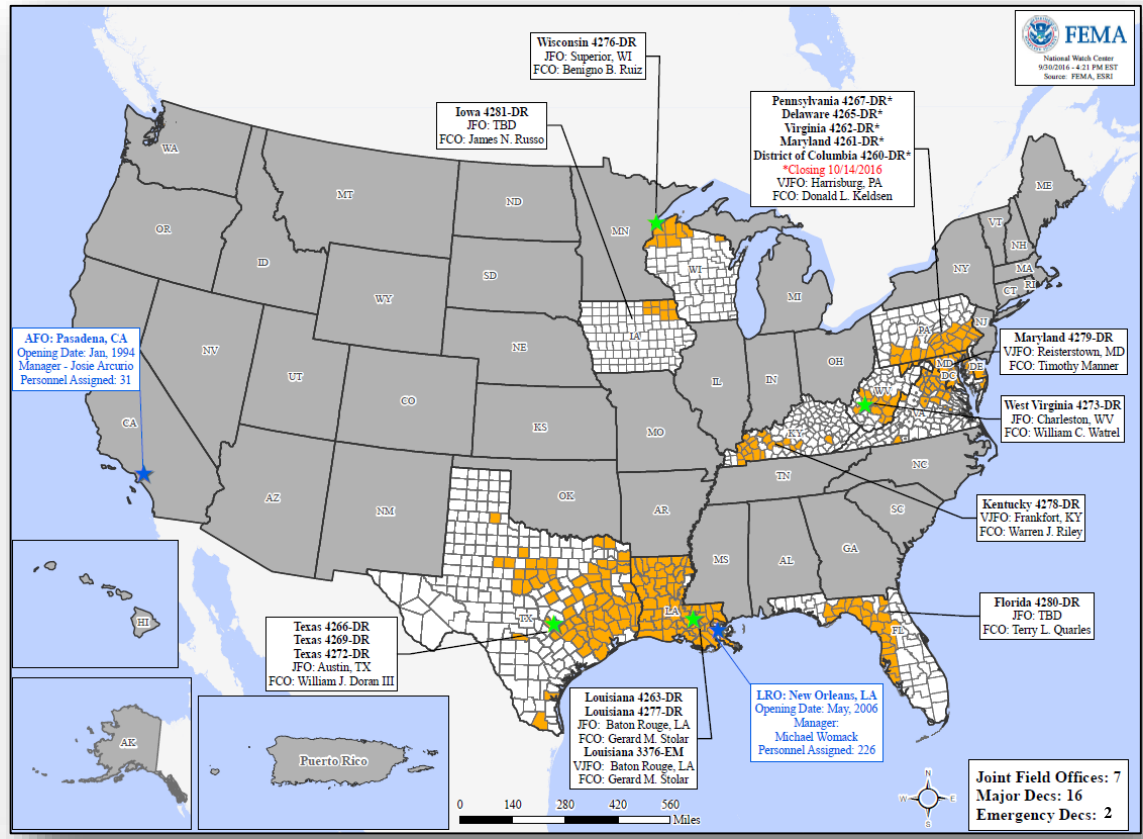


FEMA-4282-DR-HI

- Major Disaster Declaration approved on October 6, 2016 for State of Hawaii
- For severe storms, flooding, landslides, and mudslides from September 11-14, 2016
- Provides:
 - Public Assistance for Maui County
 - Hazard Mitigation statewide
- FCO is Dr. Ahsha N. Tribble



Open Field Offices



Readiness – Deployable Teams and Assets



Resource	Status	Total	FMC Available		Partially Available	Not Available	Detailed, Deployed, Activated	Comments	Rating Criterion
FCO	Yellow	35	6	17%	0	0	29		OFDC Readiness: FCO Green Yellow Red Type 1 3+ 2 1 Type 2 4+ 3 2 Type 3 4+ 3 2
FDRC	Red	10	1	10%	0	3	6		FDRC 3 2 1
US&R	Green	28	16	57%	0	0	12	Blue IST to GA NY-TF1 to GA or SC MO-TF1 to GA MD-TF1 to Ft. Bragg, NC TN-TF1 to SC VA-TF1 and VA-TF2 to Lake City, FL OH-TF1, PA-TF1, IN-TF1, NJ-TF1 to Lakeland, FL (FL-TF1 & FL-TF2 Utilized as state assets)	<ul style="list-style-type: none"> Green = Available / FMC Yellow = Available / PMC Red = Out-of-Service Blue = Assigned / Deployed
National IMAT	Red	3	0	0%	0	0	3	East 2 to LA (DR-4277) East 1 & West to GA (Hurricane Matthew)	<ul style="list-style-type: none"> Green: 3 available Yellow: 1-2 available Red: 0 avail (<i>Individual N-IMAT red if 50% of Section Chiefs and / or Team Leader is unavailable for deployment.</i>)
Regional IMAT	Yellow	13	4	31%	0	0	9	Deployed: Region III to VA (Hurricane Matthew) Region IV-1 to NC (Hurricane Matthew) Region IV-2 to FL (Hurricane Matthew) Region V & Region IX-2 to SC (Hurricane Matthew) Region VI-2, Region VIII & Region X to LA (DR-4277) Region VII to IA (DR-4281)	<ul style="list-style-type: none"> Green: >6 teams available Yellow: 4 - 6 teams available Red: < 4 teams available <i>R-IMAT also red if TL Ops / Log Chief is unavailable & has no qualified replacement</i>
MERS	Green	18	14	78%	0	0	4	Deployed: Tallahassee and Ocala, FL Washington, DC Thomasville, GA Raleigh and Fort Bragg, NC Columbia and West Columbia, SC Richmond and AP Hill, VA Chicago, IL (Chicago Marathon)	<ul style="list-style-type: none"> Green = >66% available Yellow = 33% to 66% available Red = <33% available

Readiness – National and Regional Teams



Resource	Status	Total	FMC Available		Partially Available	Not Available	Status	Comments	Rating Criteria
NWC	Green	5	5	100%	0	0	Not Activated		<ul style="list-style-type: none"> • Green = FMC • Yellow = PMC • Red = NMC
NRCC	Green	2	2	100%	0	0	Activated	Level I, 24/7 (Hurricane Matthew)	
HLT	Green	1	1	100%	0	0	Activated		
RRCCs	Green	10	10	100%	0	0	Activated	Region IV at Level I, 24/7 (Hurricane Matthew)	
RWCs/MOCs	Green	10	10	100%	0	0	Activated	Region I at Enhanced Watch, day shift only (Hurricane Matthew) Region III returned to Watch/Steady State	



FEMA

FEMA's mission is to support our citizens and first responders to ensure that as a nation we work together to build, sustain, and improve our capability to prepare for, protect against, respond to, recover from, and mitigate all hazards.