



FEMA

Daily Operations Briefing

Wednesday, October 5, 2016

8:30 a.m. EDT

Significant Activity – Oct 4-5



Significant Events: Hurricane Matthew

Tropical Activity:

- Atlantic – Hurricane Matthew (Category 3); Tropical Storm Nicole; Disturbance 1 – Low (10%)
- Eastern Pacific – Disturbance 1 – Low (10%)
- Central Pacific – No tropical cyclones are expected through Friday morning
- Western Pacific – No tropical cyclone activity affecting U.S. interests

Significant Weather:

- Rain and Thunderstorms – Pacific Northwest, Southwest, Mississippi Valley, Great Lakes, Ohio and Tennessee valleys, Southeastern U.S. to the Mid-Atlantic
- Rain and Snow – Northern Intermountain and Northern Plains
- Critical Fire Weather – CA
- Red Flag Warnings – CA
- Space weather – Past 24 hours – none; next 24 hours – none

Earthquake Activity: No significant activity

Declaration Activity:

- Emergency Declaration request for SC and NC
- FMAG approved for Beulah Hill Fire, CO

Hurricane Matthew



State/Local Preparations:

- Florida:
- State EOC at Full Activation (Level I); Governor declared a State of Emergency
 - Shelters identified & placed on standby in Miami Dade, Broward, Martin, St. Lucie & Indian River Counties

- Georgia:
- State EOC at Full Activation (Level I)
 - Shelters coordinated and on standby

- South Carolina:
- State EOC at Full Activation (OPCON 2); Governor declared a State of Emergency & submitted Emergency Declaration request
 - Mandatory Medical evacuations for 9 counties and Mandatory evacuations (estimated 1.5 million people) for all coastal counties begins today
 - 95 shelters on standby with several others forecast to open
 - Marine Corp Recruit Depot (MCRD), Parris Island will evacuate tonight to Albany, GA

- North Carolina:
- State EOC at Partial Activation (Level III); Governor declared a State of Emergency & submitted Emergency Declaration request
 - Preparing to activate 247 National Guard members; activate and pre-deploy Urban Search & Rescue/Swift Water Rescue Teams
 - Coordination for EMS Ambulance Strike teams and EMS medical EVAC buses started
 - Mandatory evacuation issued for Cape Lookout National Seashore (vehicle ferries moving visitors & vehicles started)

- Tennessee:
- State EOC at Monitoring (Level IV) – Prepared to support potential EMAC requests

- Virginia:
- State EOC at Partial Activation (Level II)

Hurricane Matthew



FEMA Preparations

Region IV:

- **RRCC Level II**; RWC Enhanced Watch (dayshift only)
- LNOs deployed to FL, GA, NC, SC
- IMAT-1 to NC
- IMAT-2 to FL (supporting DR-4280) will provide additional support for Matthew
- Hurricane Liaison member deployed to National Hurricane Center

Region III

- **RRCC Level II**; RWC Enhanced Watch (dayshift only)
- LNO deployed to Ft Bragg ISB
- Hurricane Liaison member deployed to National Hurricane Center

Region II:

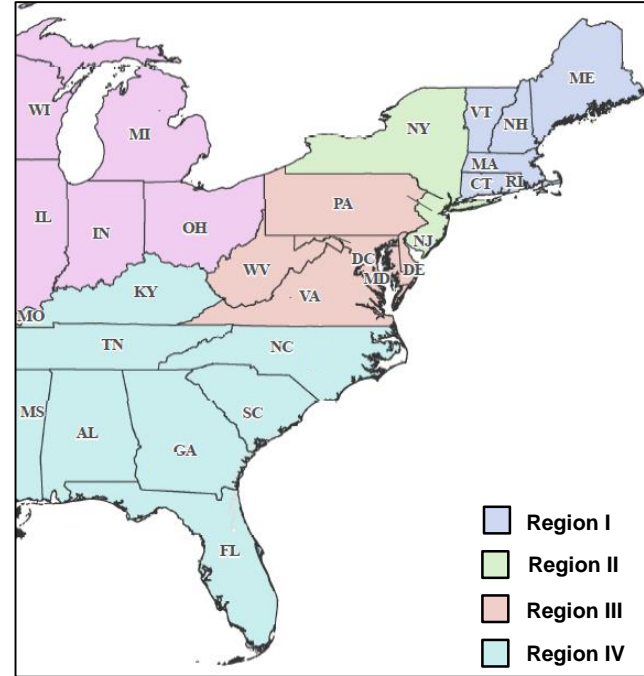
- RRCC to Level II on October 8; RWC Enhanced Watch on October 6 (dayshift only)
- Hurricane Liaison member deployed to National Hurricane Center

Region I:

- RRCC at normal operations; RWC Enhanced Watch

FEMA HQ:

- **NRCC Level I (beginning Oct 6); Enhanced Watch (24/7)**
- National IMAT-West to Atlanta, GA (Region IV)
- Region IX IMAT-2 to Atlanta, GA (Region IV)
- **Region V IMAT to Philadelphia, PA (Region III)**
- Incident Staging Base (ISB) at Marine Corp Logistics Base (MCLB) Albany, GA & Fort Bragg, NC
- MERS personnel & MCOVs to Tallahassee, FL (supporting DR-4280)

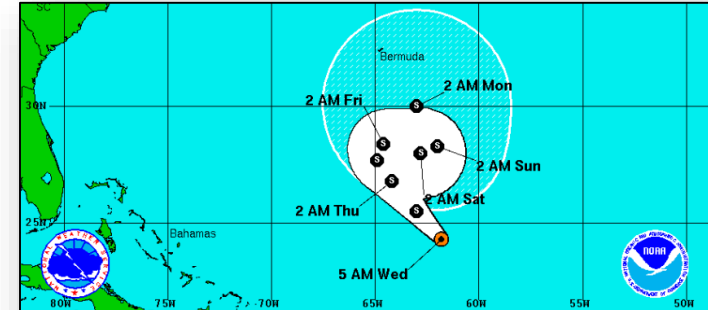


Tropical Outlook – Atlantic



Tropical Storm Nicole: (Advisory 4, as of 5:00 a.m. EDT)

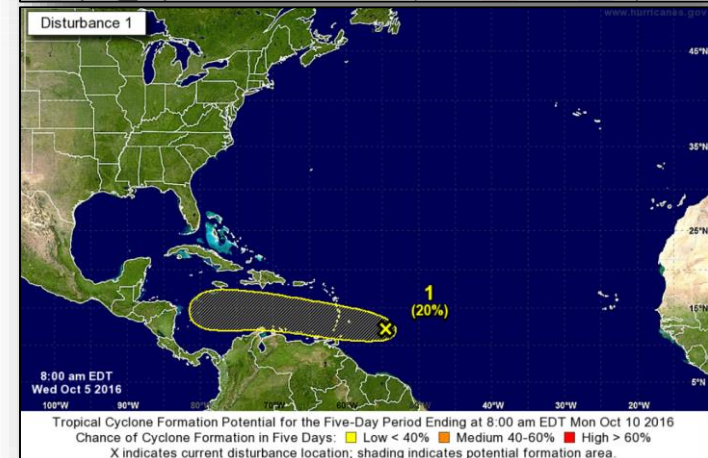
- Located about 490 miles NE of San Juan, Puerto Rico
- Moving W at 9 mph; maximum sustained winds near 50 mph
- Little change in strength for the next day or so, followed by gradual weakening
- Tropical storm force winds extend outward up to 70 miles
- No threat to US territories at this time



Tropical Storm Nicole Wednesday October 5, 2016 5 AM EDT Advisory 4 NWS National Hurricane Center	Current Information: ● Center Location 24.3 N 61.8 W ● Max Sustained Wind 50 mph ● Movement WNW at 6 mph	Forecast Positions: ● Tropical Cyclone ○ Post-Tropical ● D < 39 mph ● S 39-73 mph H 74-110 mph M > 110mph
Potential Track Area: ○ Day 1-3 ○ Day 4-5	Watches: ■ Hurricane ■ Trop.Storm	Warnings: ■ Hurricane ■ Trop.Storm

Disturbance 1: (as of 8:00 a.m. EDT)

- Located several hundred miles E of Windward Islands
- Moving W at 10-15 mph
- Producing a large area of disorganized showers and thunderstorms
- Formation chance through 48 hours: Low (10%)
- Formation chance through 5 days: Low (20%)



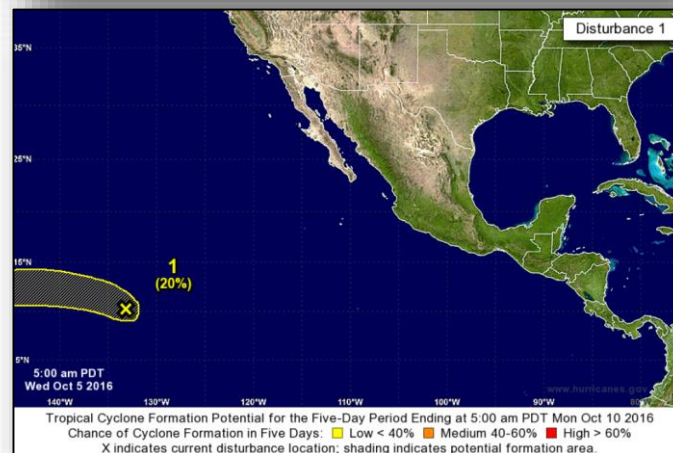
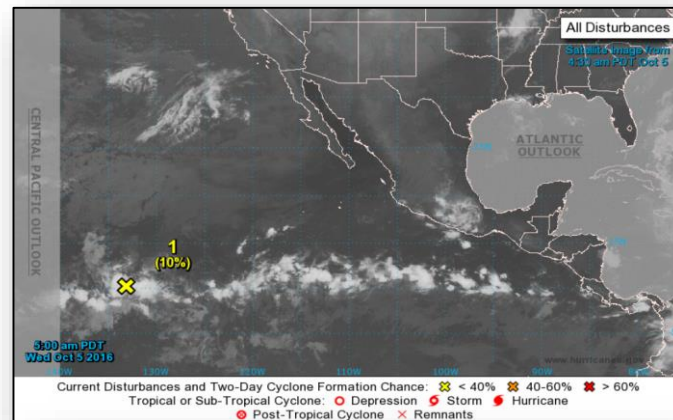
Tropical Cyclone Formation Potential for the Five-Day Period Ending at 8:00 am EDT Mon Oct 10 2016
Chance of Cyclone Formation in Five Days: ■ Low < 40% ■ Medium 40-60% ■ High > 60%
X indicates current disturbance location; shading indicates potential formation area.

Tropical Outlook – Eastern Pacific

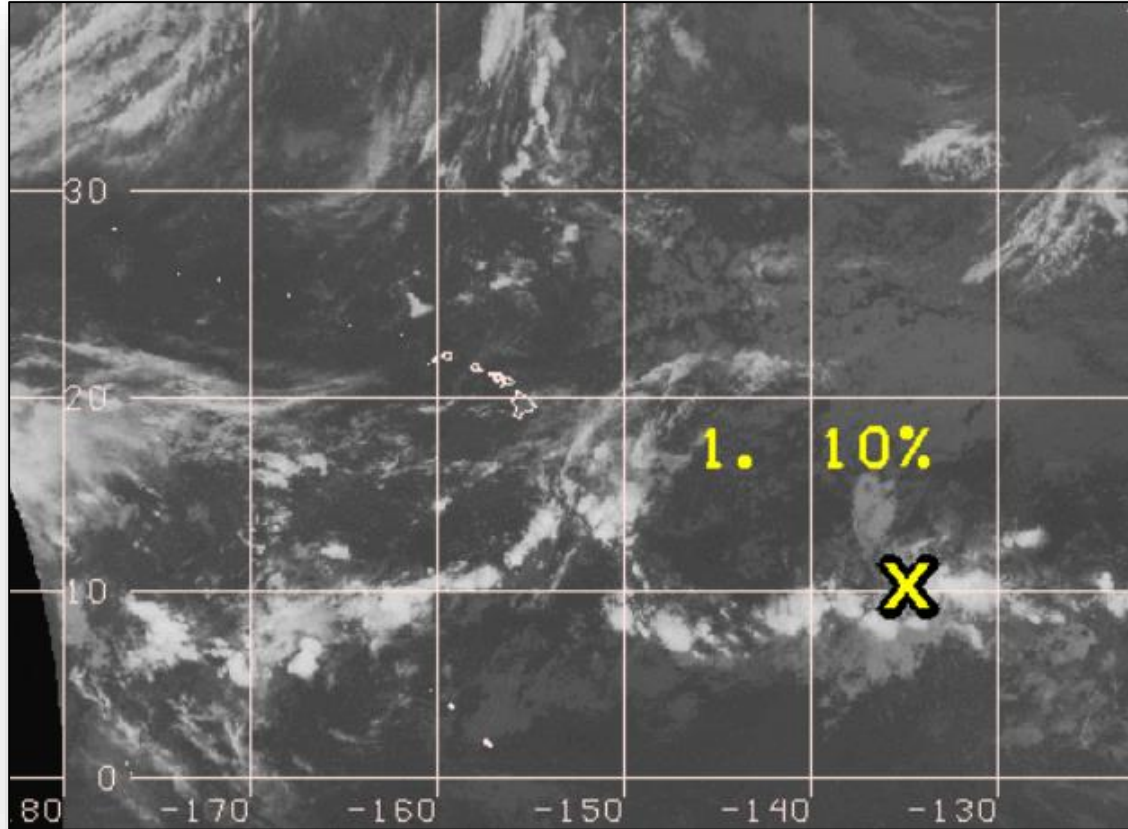


Disturbance 1: (as of 8:00 a.m. EDT)

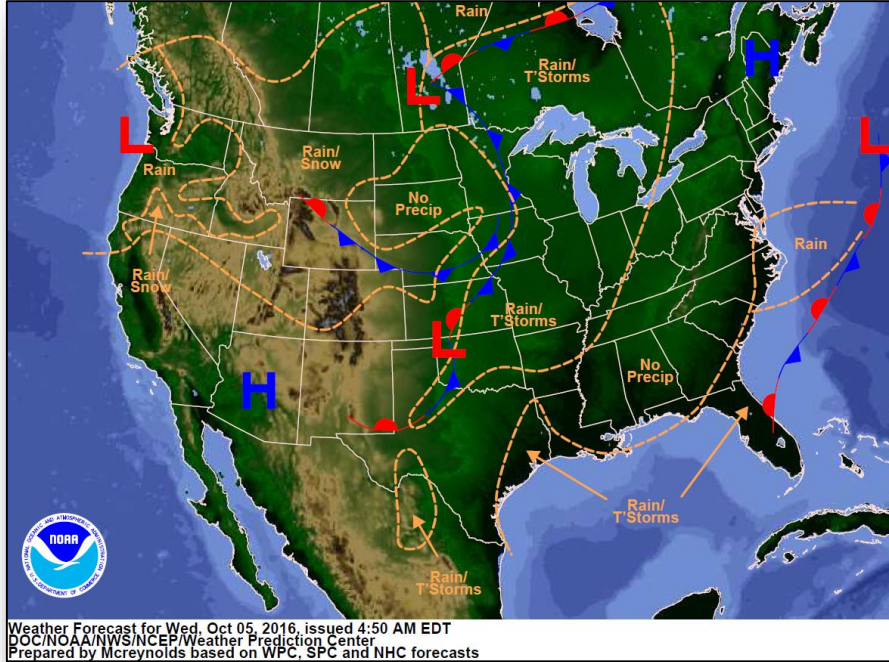
- Located 1,500 ESE of the Big Island of Hawaii
- Moving W at 10 mph
- Producing disorganized thunderstorms
- Development, if any, will be slow to occur
- Formation chance through 48 hours: Low (10%)
- Formation chance through 5 days: Low (20%)



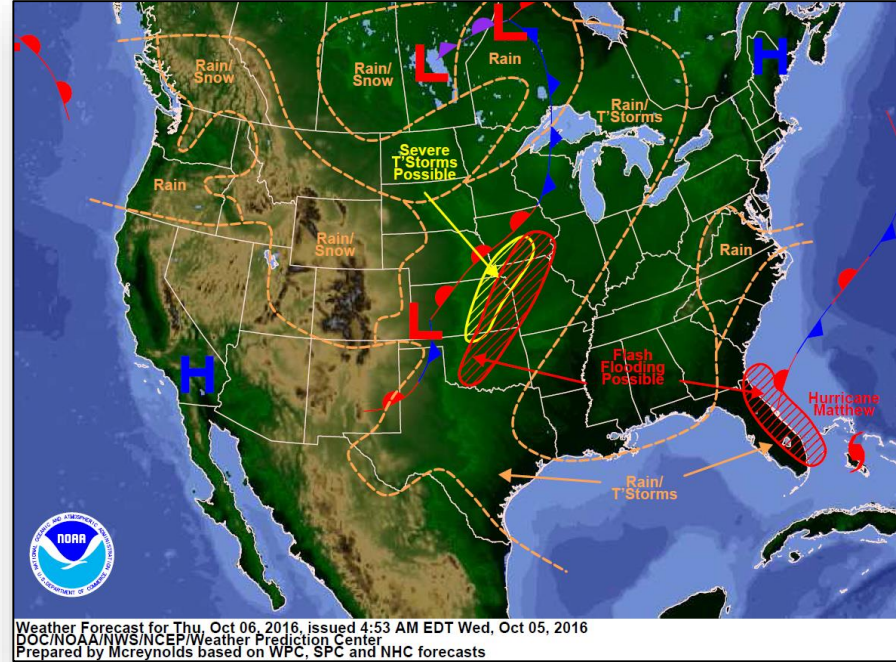
Tropical Outlook – Central Pacific



National Weather Forecast

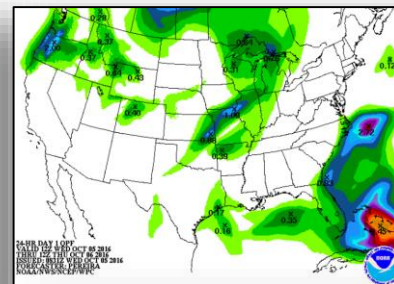
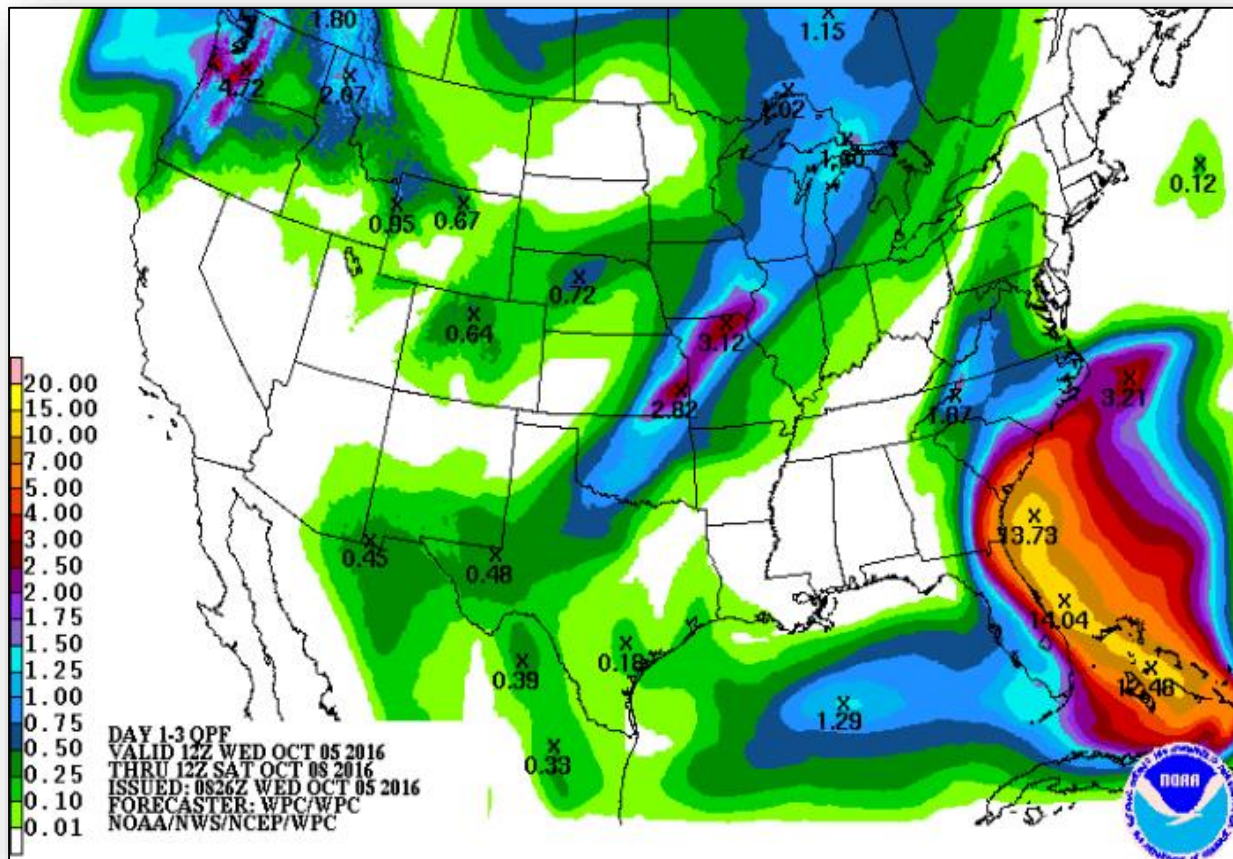


Today

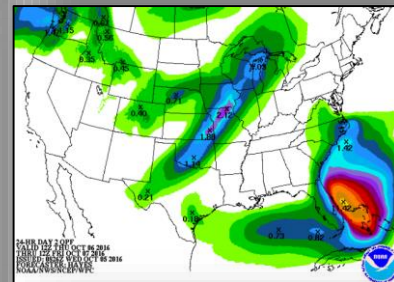


Tomorrow

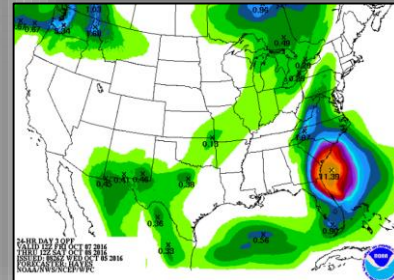
Precipitation Forecast – Days 1-3



Day 1

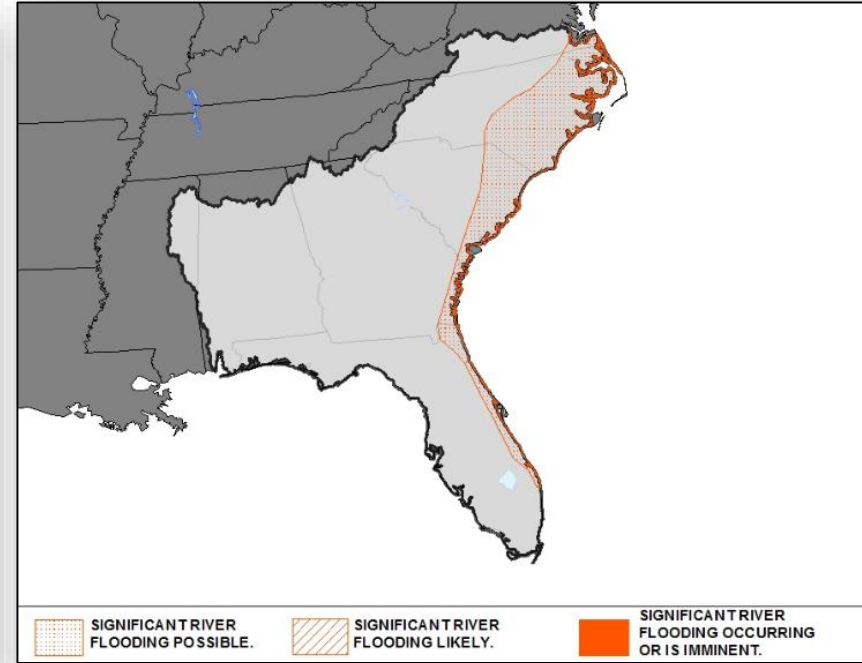
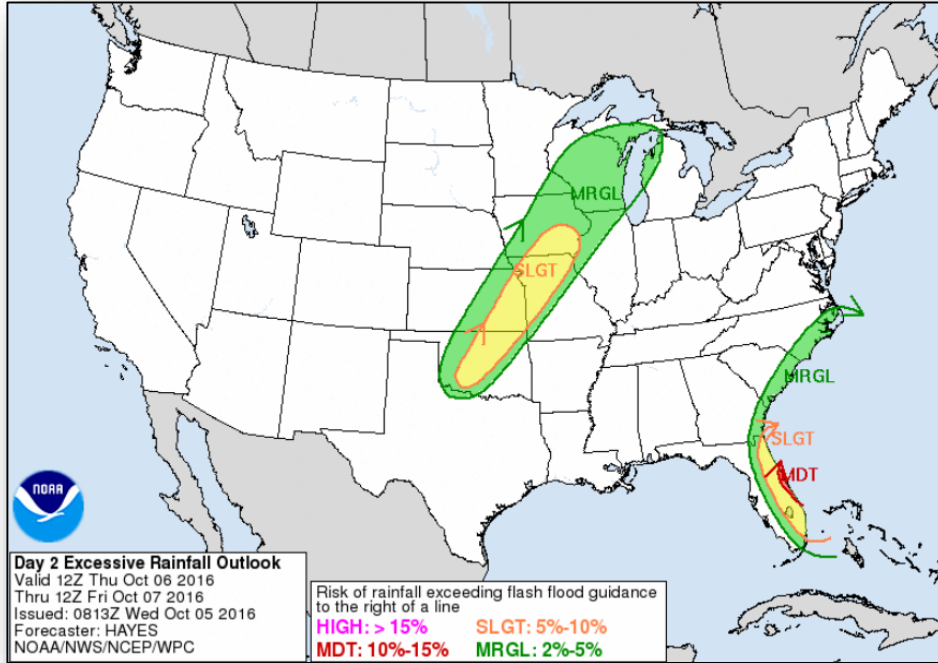


Day 2

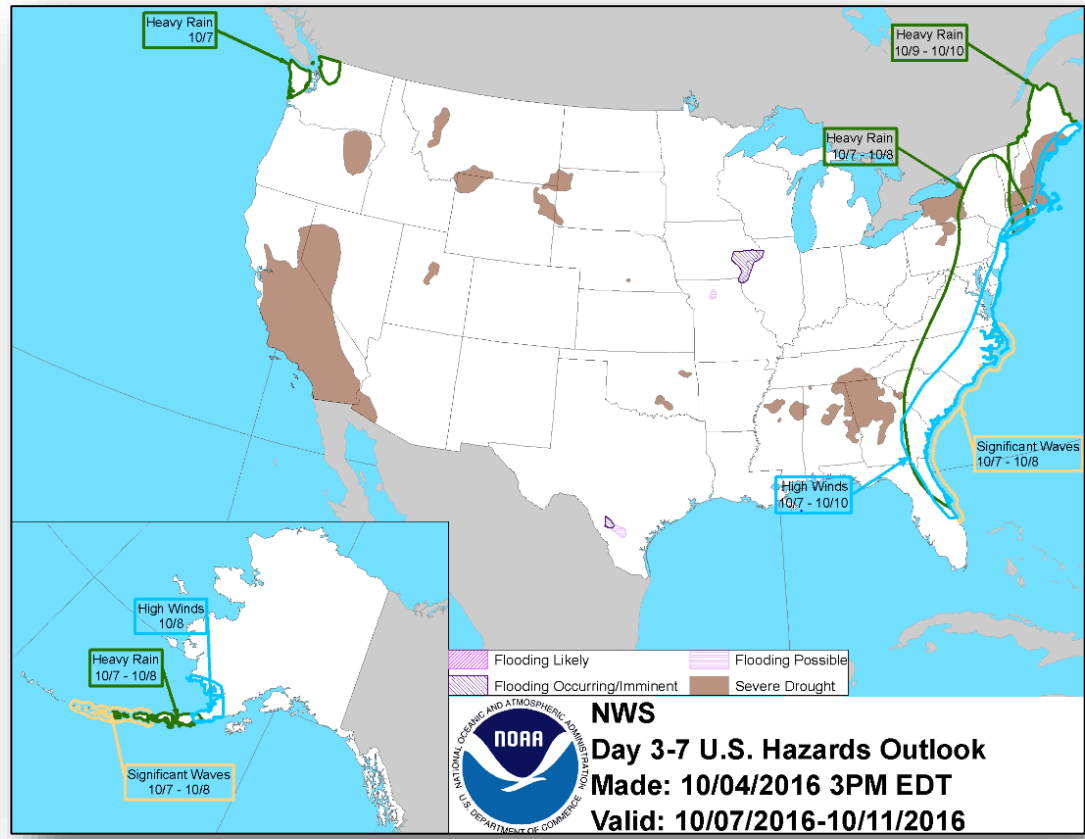


Day 3

Flash and River Flood Outlooks



Hazards Outlook – Oct 7-11

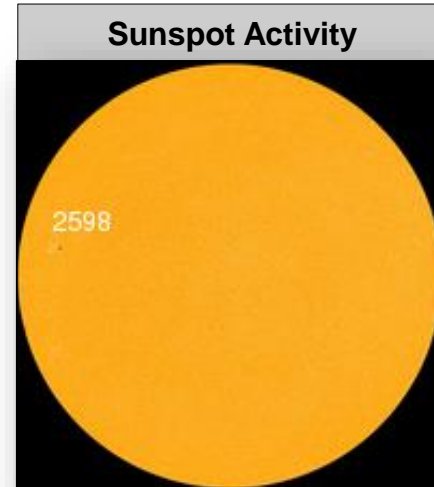
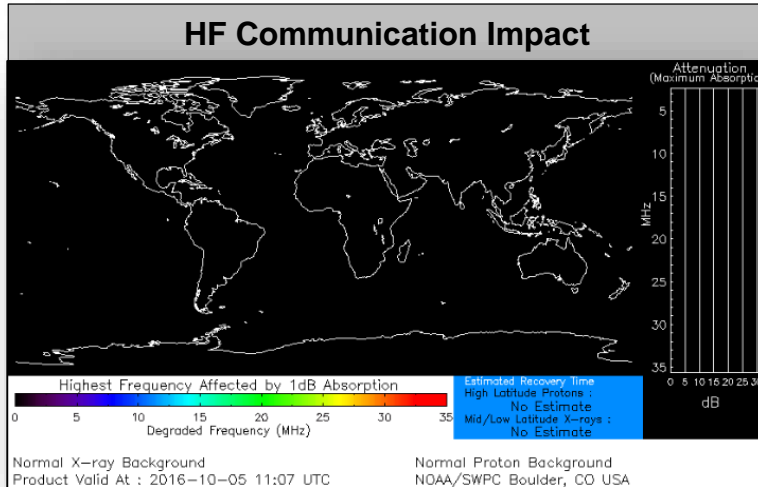


Space Weather



	Space Weather Activity	Geomagnetic Storms	Solar Radiation	Radio Blackouts
Past 24 Hours	None	None	None	None
Next 24 Hours	None	None	None	None

For further information on NOAA Space Weather Scales refer to <http://www.swpc.noaa.gov/noaa-scales-explanation>



Beulah Hill Fire – Colorado



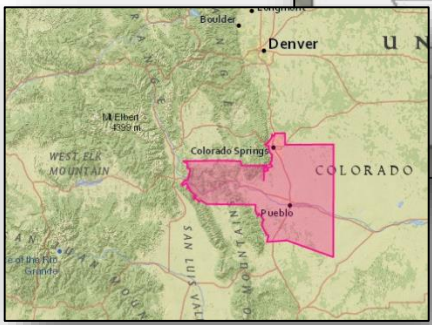
Fire Name (County)	FMAG # / Approved	Acres burned	% Contained	Evacuations (Residents)	Structures			Fatalities / Injuries
					Threatened	Damaged	Destroyed	
Beulah Hill Fire (Pueblo County)	Approved October 4, 2016	4,845	0%	Mandatory (1,250)	500 (Homes/Other)	Unknown	8 (Homes) 6 (other)	0 / 0

FMAG Information (at time of FMAG Request):

- Fire started on Oct 3, 2016, near Beulah, Colorado
- 3,000 acres burned; state and private land
- Mandatory evacuations for approximately 1,250 residents
- Threatening 500 residences/businesses; 8 homes destroyed
- No fatalities or injuries reported

Response:

- CO EOC at Normal Operations
- FEMA Region VIII at Watch Steady State



Joint Preliminary Damage Assessments



Region	State / Location	Event	IA/PA	Number of Counties		Start – End
				Requested	Complete	
V	Wisconsin	Severe Storms and Flooding September 21 – 22, 2016	PA	12	0	10/4 – TBD
V	Minnesota	Severe Storms and Flooding September 21 – continuing, 2016	PA	9	0	10/10 – TBD
			IA	4	0	10/10 – TBD
VII	Iowa	Flooding September 21 – continuing, 2016	IA	9	9	9/29 – 10/3
VII	Kansas	Severe Storms and Flooding September 2 – 12, 2016	PA	11	0	9/28 – TBD
VIII	*Pine Ridge Indian Reservation	Wind and Tornado Event September 23, 2016	IA	1	0	10/4 – TBD

* Oglala Sioux Tribe in South Dakota

Disaster Requests & Declarations

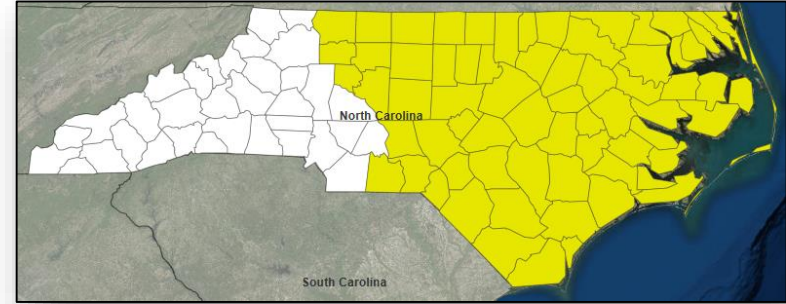


Declaration Requests in Process		Requests APPROVED (since last report)	Requests DENIED (since last report)
4	Date Requested	0	0
Navajo Nation – DR Severe Storms and Flooding	September 21, 2016		
HI – DR Severe Storms and Flooding	September 27, 2016		
NC – EM Potential Impact of Hurricane Matthew	October 4, 2016		
SC – EM Potential Impact of Hurricane Matthew	October 4, 2016		

Declaration Requests

North Carolina

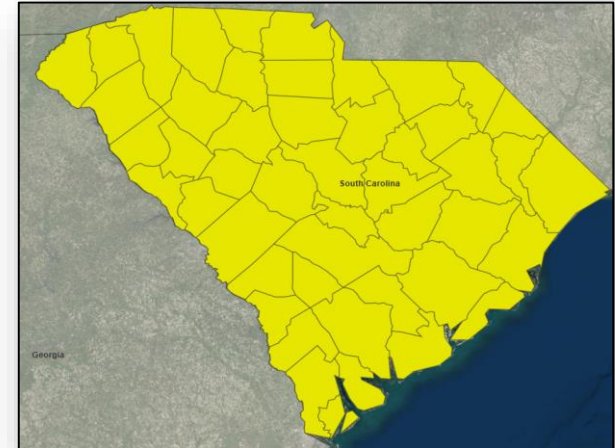
- Governor requested an Emergency Declaration on October 4, 2016
- For potential impacts of Hurricane Matthew beginning on October 4, 2016 – Continuing
- Requesting:
 - Emergency Protective Measures (Category B), including Direct Federal Assistance, under the *Public Assistance* program for 66 counties within the state



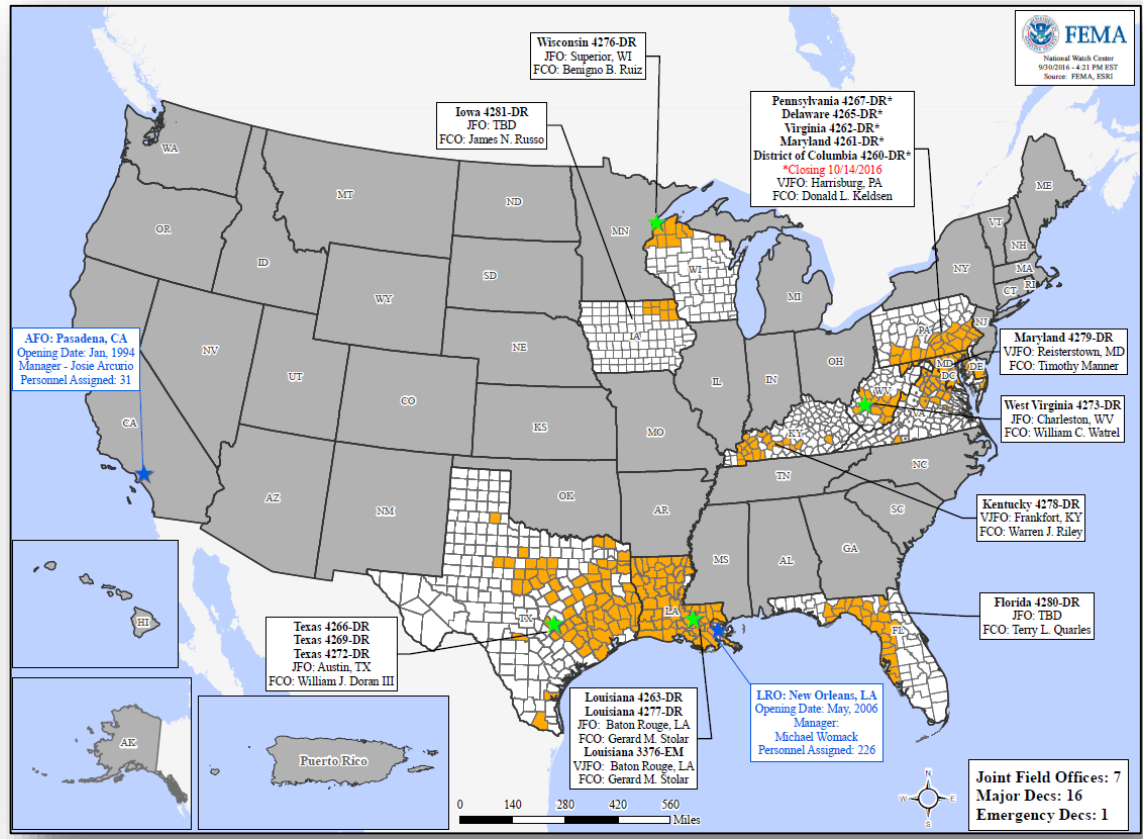
 Counties Requested

South Carolina

- Governor requested an Emergency Declaration on October 4, 2016
- For potential impacts of Hurricane Matthew beginning on October 4, 2016 – Continuing
- Requesting:
 - Emergency Protective Measures (Category B), including Direct Federal Assistance, under the *Public Assistance* program for all counties within the state



Open Field Offices



Readiness – Deployable Teams and Assets



Resource	Status	Total	FMC Available		Partially Available	Not Available	Detailed, Deployed, Activated	Comments	Rating Criterion
FCO	Yellow	35	6	17%	0	0	29		OFDC Readiness: FCO Green Yellow Red Type 1 3+ 2 1 Type 2 4+ 3 2 Type 3 4+ 3 2
FDRC	Red	10	1	10%	0	3	6		FDRC 3 2 1
US&R	Green	28	28	100%	0	0	0		<ul style="list-style-type: none"> Green = Available / FMC Yellow = Available / PMC Red = Out-of-Service Blue = Assigned / Deployed
National IMAT	Yellow	3	1	33%	0	0	2	East 2 to LA (DR-4277) West to GA (Region IV / Hurricane Matthew)	<ul style="list-style-type: none"> Green: 3 available Yellow: 1-2 available Red: 0 avail (<i>Individual N-IMAT red if 50% of Section Chiefs and / or Team Leader is unavailable for deployment.</i>)
Regional IMAT	Yellow	13	4	23%	0	0	9	<u>Deployed:</u> Region III to VA (Hurricane Matthew) Region IV Team 1 to NC (Hurricane Mathew) Region IV Team 2 to FL (DR-4280) Region V to PA (Region III / Hurricane Matthew) Region VI Team 2 to LA (DR-4277) Region VII to MO (DR-4281) Region VIII to LA (DR-4277) Region IX Team 2 to GA (Region IV / Hurricane Matthew) Region X to LA (DR-4277)	<ul style="list-style-type: none"> Green: >6 teams available Yellow: 4 - 6 teams available Red: < 4 teams available R-IMAT also red if TL Ops / Log Chief is unavailable & has no qualified replacement
MERS	Green	18	17	94%	0	0	1	<u>Deployed:</u> Tallahassee, FL (DR-4280-FL)	<ul style="list-style-type: none"> Green = >66% available Yellow = 33% to 66% available Red = <33% available

Readiness – National and Regional Teams



Resource	Status	Total	FMC Available		Partially Available	Not Available	Status	Comments	Rating Criteria
NWC		5	5	100%	0	0	Activated	Enhanced Watch; 24/7 until Oct 6 (Hurricane Matthew)	<ul style="list-style-type: none"> • Green = FMC • Yellow = PMC • Red = NMC
NRCC		2	2	100%	0	0	Not Activated	Level I on Oct 6 at 8:00 a.m. EDT; 24/7 Ops (Hurricane Matthew)	
HLT		1	1	100%	0	0	Activated		
RRCCs		10	10	100%	0	0	Activated	<u>Hurricane Matthew:</u> Region III at Level II; Dayshift only Region IV at Level II; 24/7	
RWCs/MOCs		10	10	100%	0	0	Activated	<u>Hurricane Matthew:</u> Region IV at Enhanced Watch; Dayshift only Region III at Enhanced Watch; Dayshift only Region II at Enhanced Watch; Dayshift only	



FEMA

FEMA's mission is to support our citizens and first responders to ensure that as a nation we work together to build, sustain, and improve our capability to prepare for, protect against, respond to, recover from, and mitigate all hazards.