



# FEMA

## Daily Operations Briefing

Monday, October 3, 2016

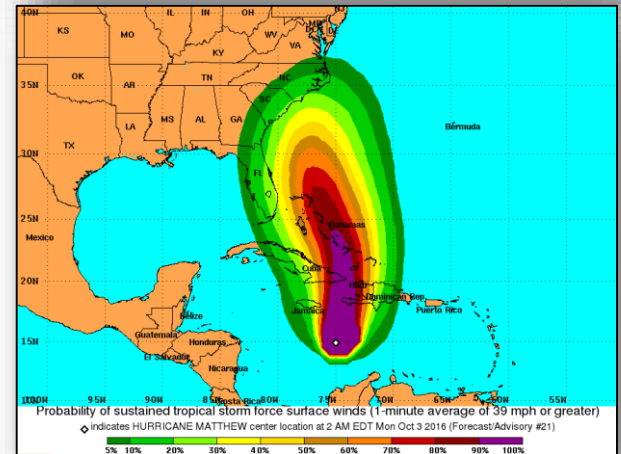
8:30 a.m. EDT

# Tropical Outlook – Atlantic



## Hurricane Matthew (CAT 4) (Advisory #21A as of 5:00 a.m. EDT)

- Located 220 miles SE of Kingston, Jamaica
- Moving N at 6 mph; general northward motion with some increase in forward speed is expected through Tuesday
- Maximum sustained winds 130 mph
- Some fluctuations in intensity are possible during the next couple days but expected to remain a powerful hurricane through Wednesday
- Hurricane force winds extend 30 miles; tropical storm force winds extend 195 miles
- Hurricane Watches and Warnings in effect for non-US interests

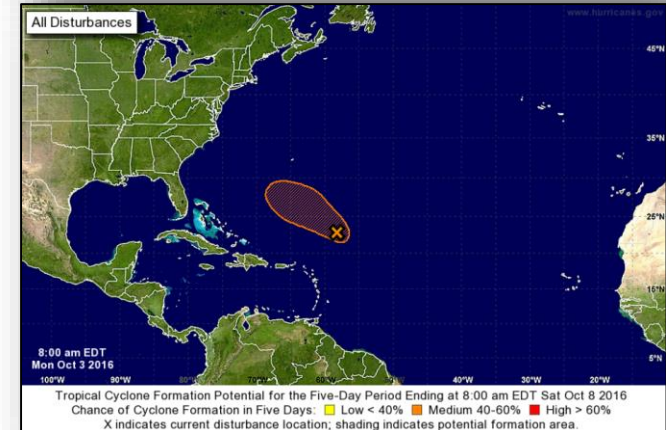
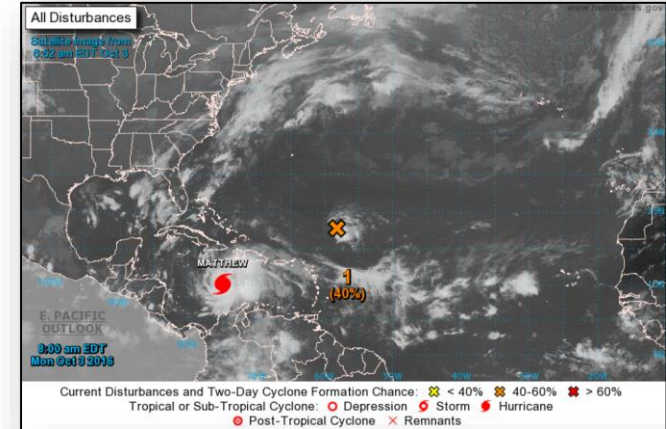


# Tropical Outlook – Atlantic



## Disturbance 1: (as of 8:00 a.m. EDT)

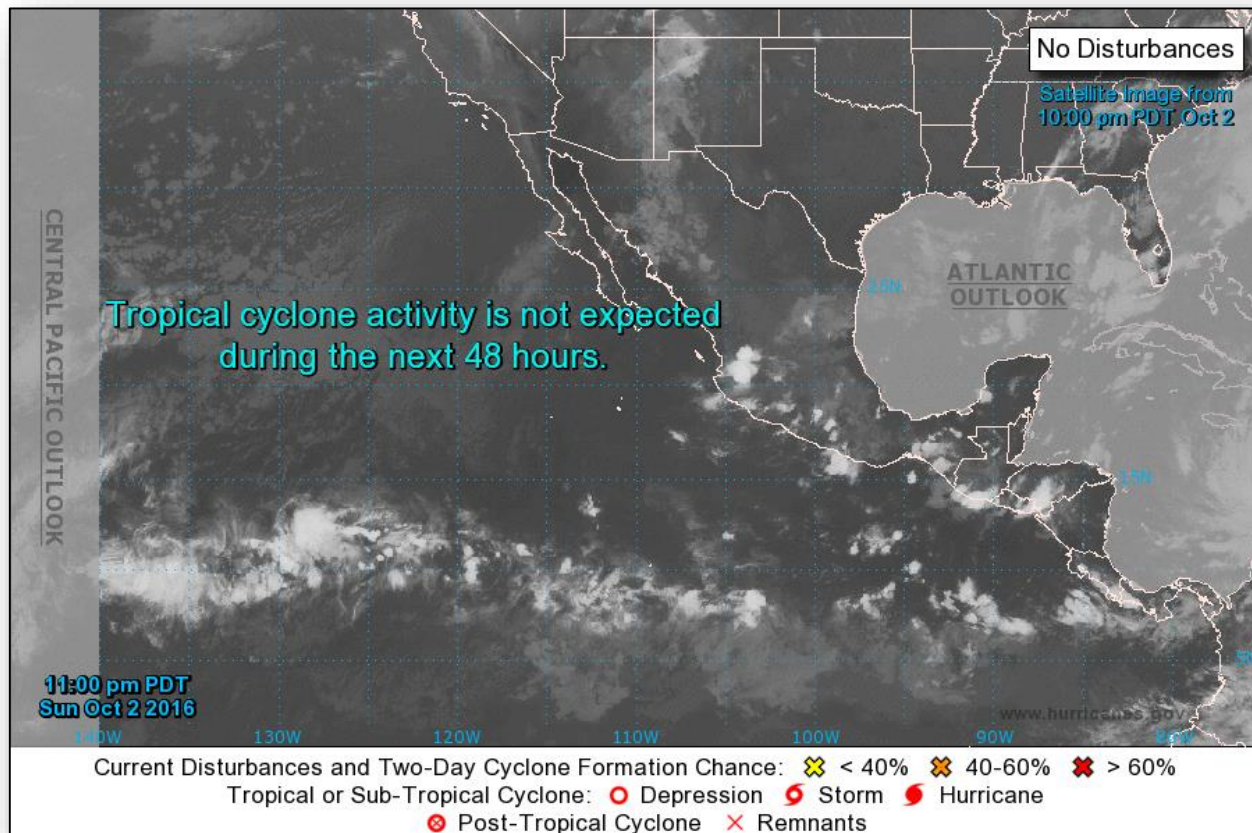
- Located 400 miles NE of the Leeward Islands
- Moving NW at 10-15 mph
- Some development is possible during the next couple days before winds become unfavorable for development
- Formation chance through 48 hours: Medium (40%)
- Formation chance through 5 days: Medium (40%)



# Tropical Outlook – Eastern Pacific



FEMA

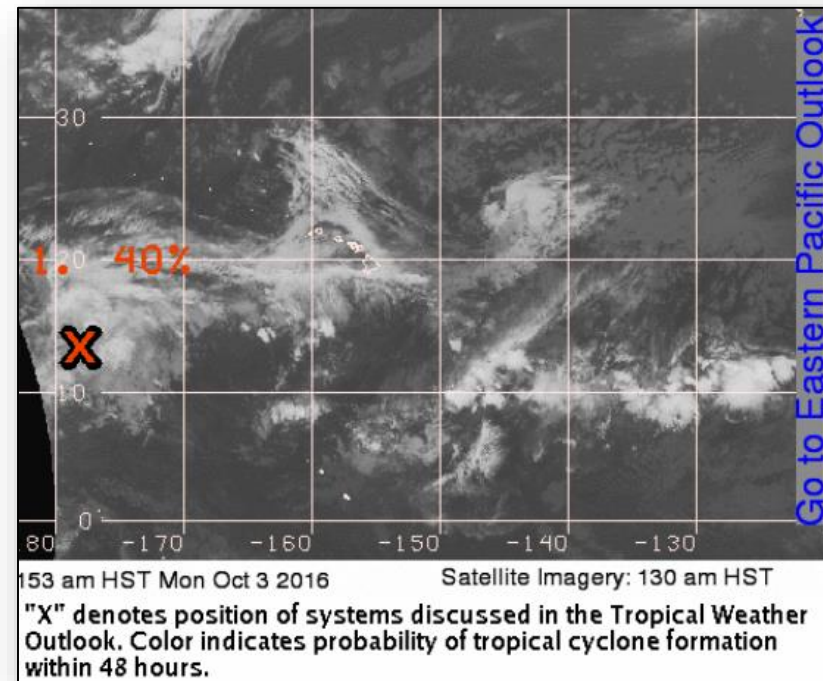


# Tropical Outlook – Central Pacific



## Disturbance 1: (as of 8:00 a.m. EDT)

- Located 1,400 miles WSW of Honolulu, HI
- Drifting NW
- Conditions expected to become more conducive for formation over next couple of days
- Formation chance through 48 hours: Medium (40%)

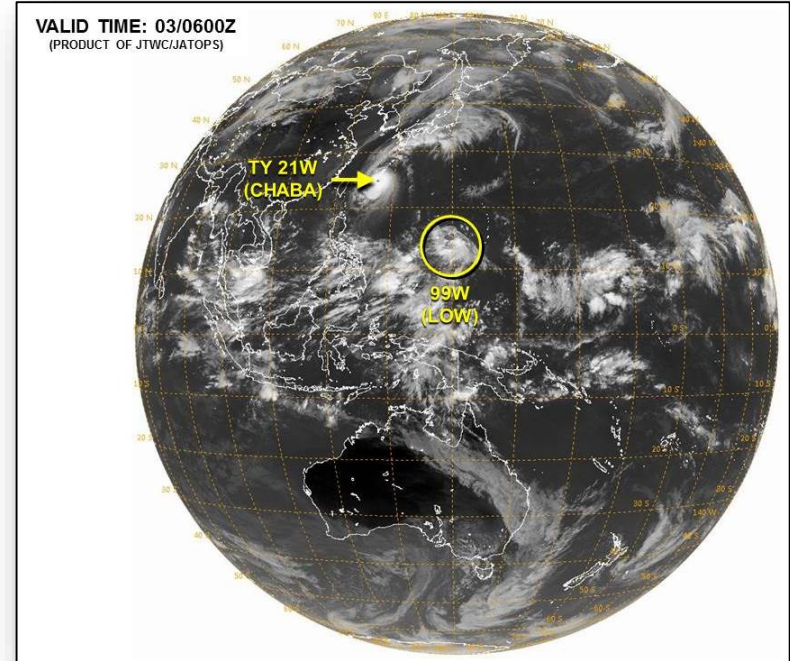


# Tropical Outlook – Western Pacific

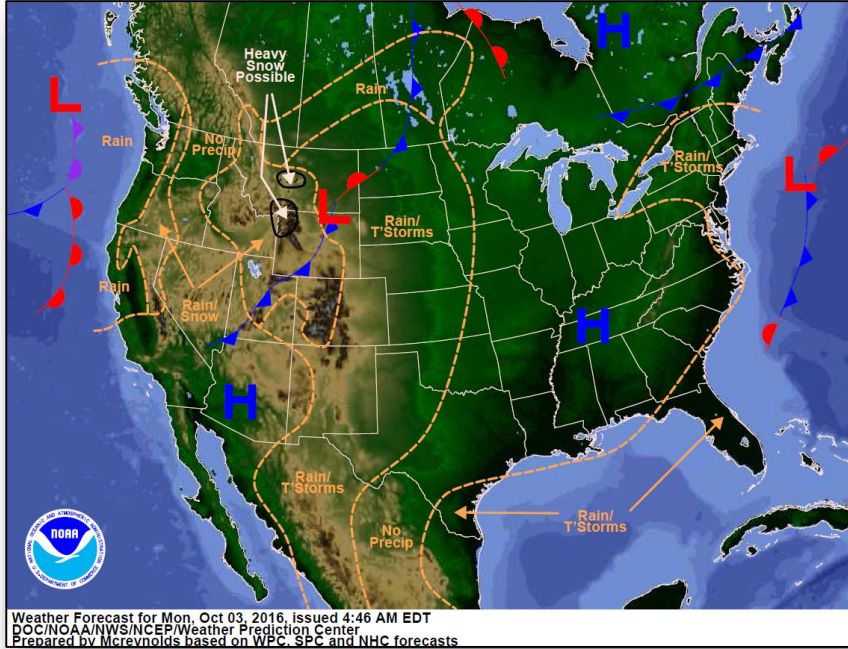


## Disturbance 1 (Invest 99W) (as of 2:00 a.m. EDT)

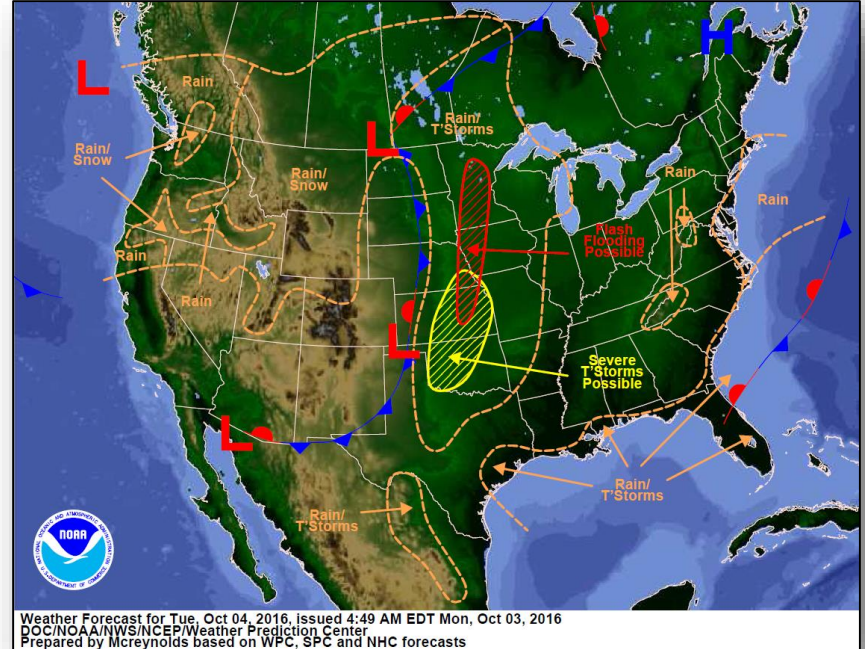
- Located 345 miles W of Andersen AB, Guam
- Moving NW
- Maximum sustained winds 11-17 mph
- Formation chance through 24 hours: Low



# National Weather Forecast

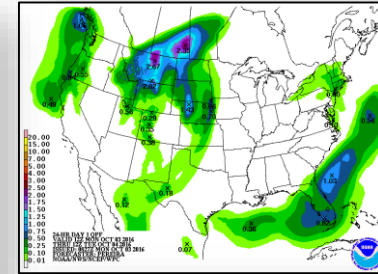
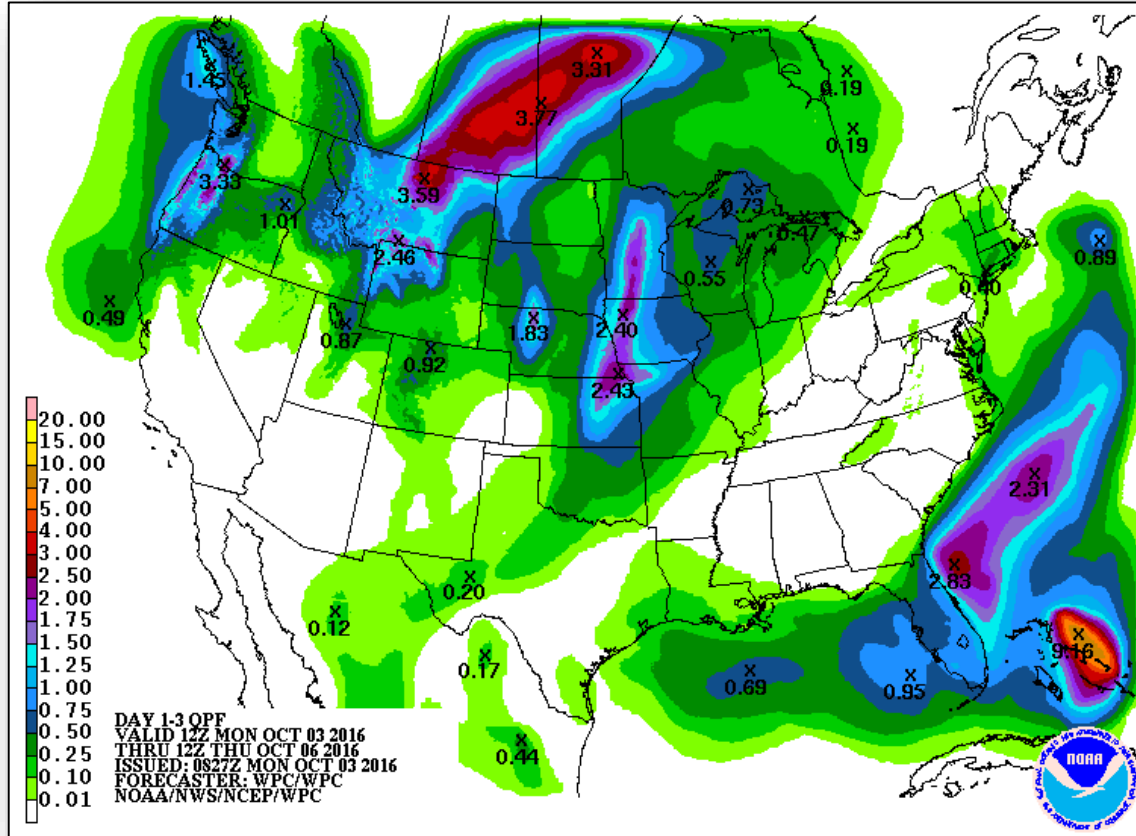


*Today*

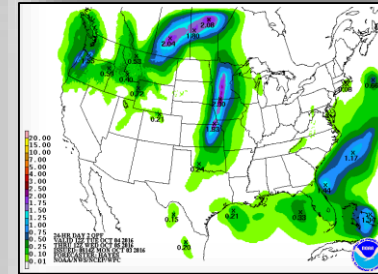


*Tomorrow*

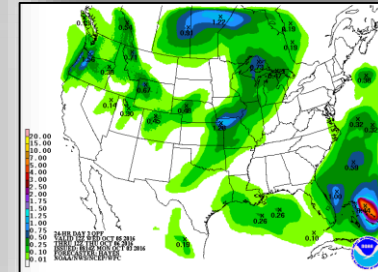
# Precipitation Forecast – Days 1-3



Day 1



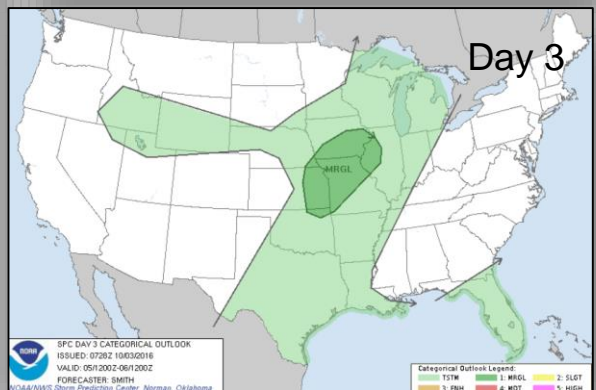
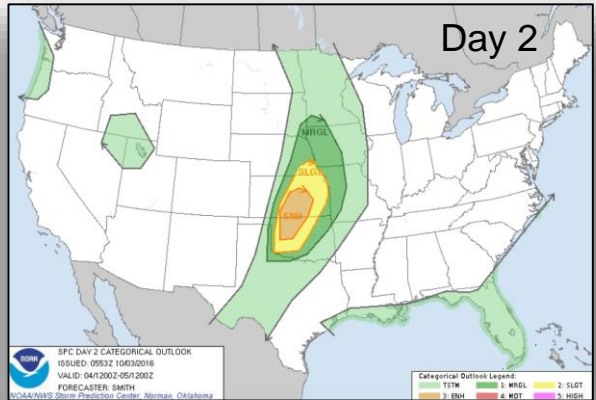
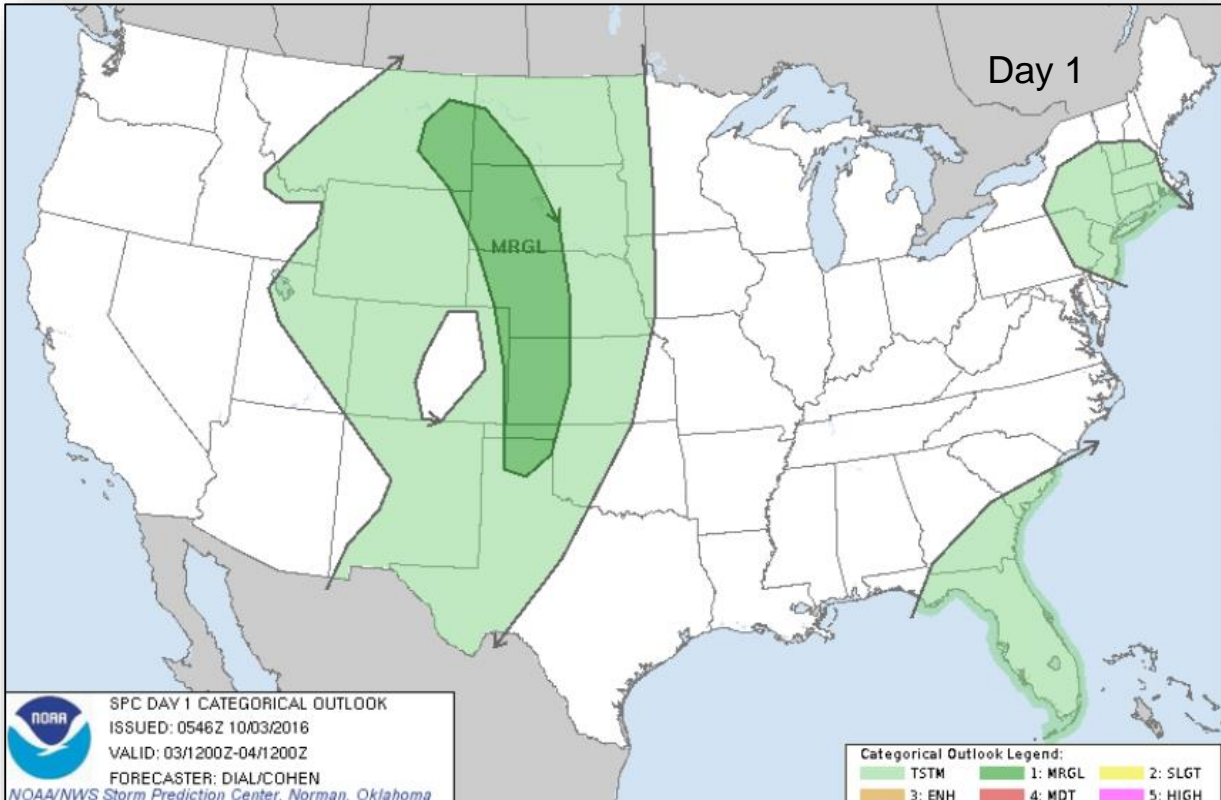
Day 2



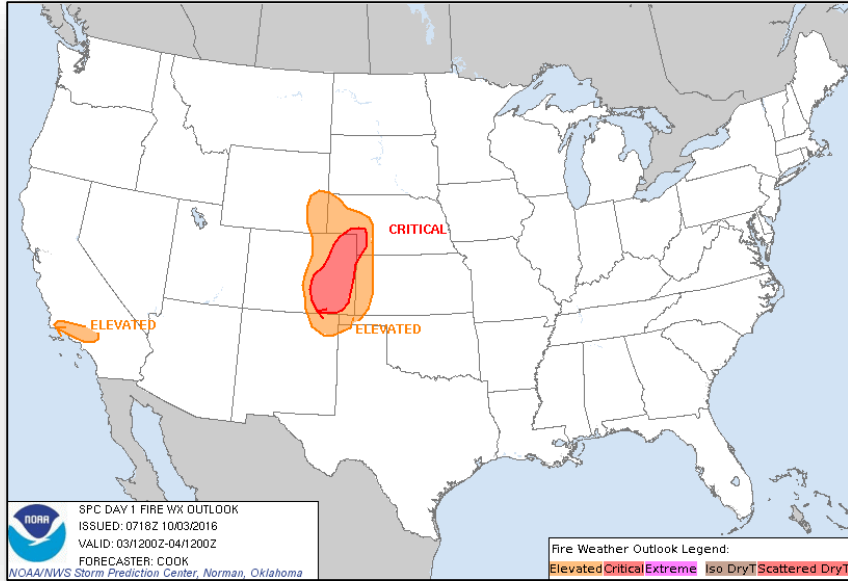
Day 3



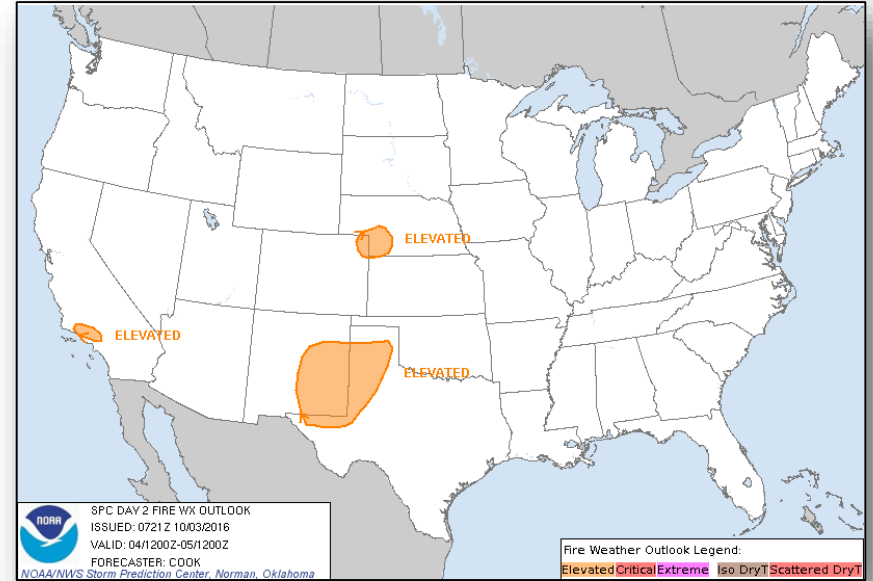
# Severe Weather Outlook – Days 1-3



# Fire Weather Outlook

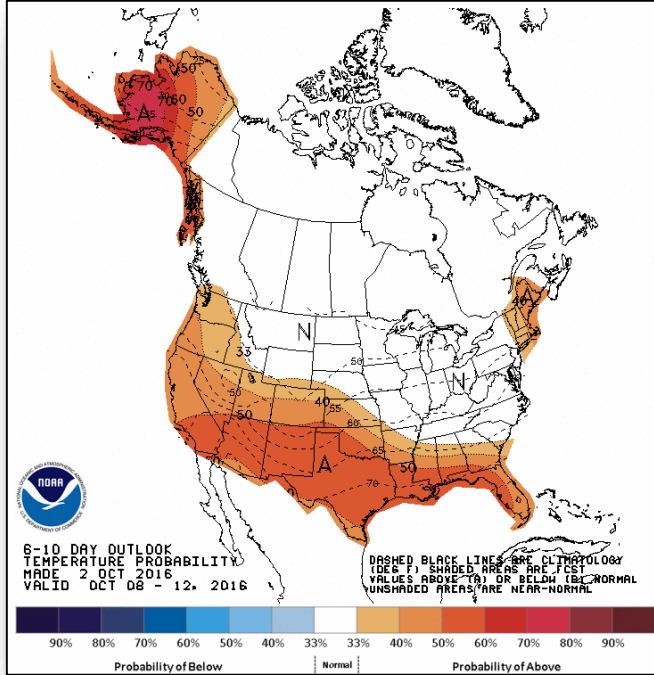


Day 1

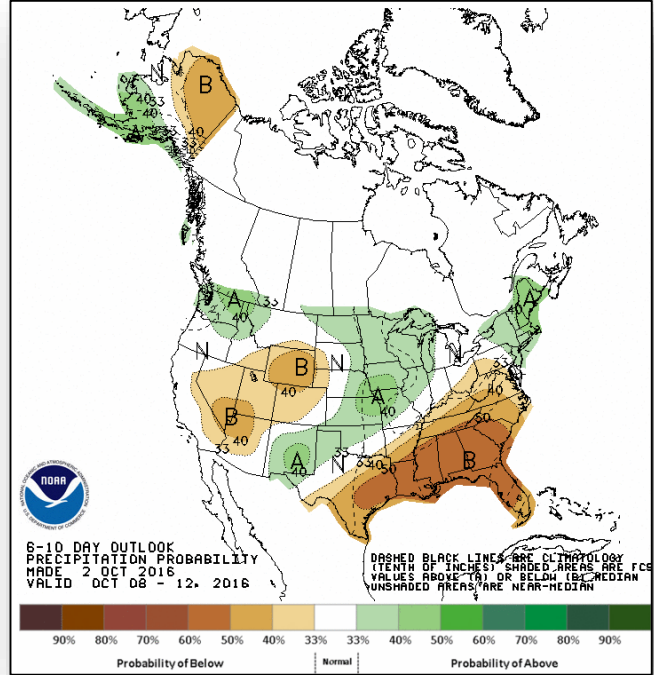


Day 2

# 6-10 Day Outlooks



6 - 10 Day Temperature Probability



6 - 10 Day Precipitation Probability

# Frontage Fire – Nevada



Fire Name	Location	Acres burned	% Contained	Est. Full Containment	FMAG	Structures Lost / Threatened	Fatalities / Injuries
Frontage Fire	Douglas County	100	3%	October 3	FEMA-5154-FM-NV Approved Oct 2	5 (2 homes)/ 750 (500 homes)	0 / 0

**Current Situation:**

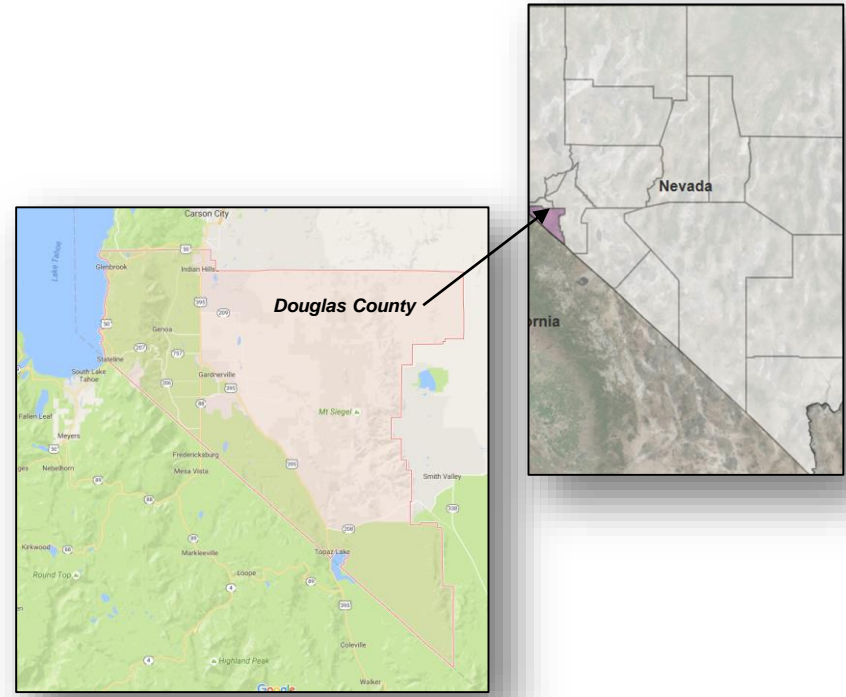
- Fire started on Oct 2 and is burning on State and private land, 4 miles south of Gardnerville, NV (affected pop 600)

**Impacts:**

- Mandatory evacuations remain in effect for 250 residents
- No fatalities or injuries

**Response:**

- NV EOC remains at Partial Activation (drought)
- FEMA Region IX RWC at Watch/Steady



# Joint Preliminary Damage Assessments



Region	State / Location	Event	IA/PA	Number of Counties		Start – End
				Requested	Complete	
VII	Iowa	Flooding September 21- ongoing	IA	9	6	9/29 - TBD
VII	Kansas	Severe Storms and Flooding September 2-12, 2016	PA	11	0	9/28 – TBD

# Disaster Requests & Declarations



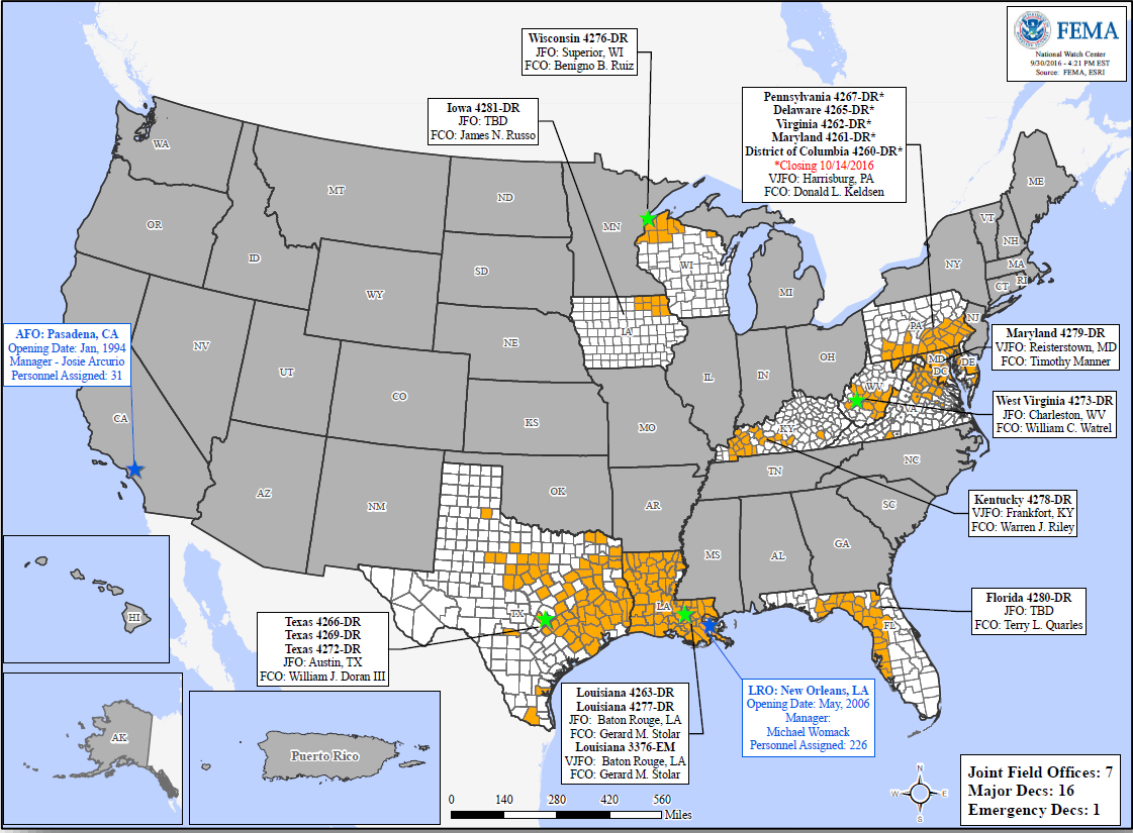
Declaration Requests in Process		Requests APPROVED (since last report)	Requests DENIED (since last report)
2	Date Requested	0	0
Navajo Nation – DR Severe Storms and Flooding	September 21, 2016		
HI – DR Severe Storms and Flooding	September 27, 2016		

# Disaster Amendments



<b>Amendment</b>	<b>Effective Date</b>	<b>Action</b>
Amendment No. 1 to FEMA-4280-DR-FL	September 30, 2016	Adds 8 Counties for PA

# Open Field Offices – October 3





# Readiness – Deployable Teams and Assets



Resource	Status	Total	FMC Available		Partially Available	Not Available	Detailed, Deployed, Activated	Comments	Rating Criterion
FCO	Yellow	35	6	17%	0	0	29		OFDC Readiness: FCO Green Yellow Red Type 1 3+ 2 1 Type 2 4+ 3 2 Type 3 4+ 3 2
FDRC	Red	10	1	10%	0	3	6		FDRC 3 2 1
US&R	Green	28	27	96%	1	0	0	NJ-TF1: Partially Mission Capable IN-TF1: FMC (returned from Exercise)	<ul style="list-style-type: none"> <li>Green = Available / FMC</li> <li>Yellow = Available / PMC</li> <li>Red = Out-of-Service</li> <li>Blue = Assigned / Deployed</li> </ul>
National IMAT	Yellow	3	2	67%	0	0	1	East 2 to LA (DR-4277) West - Primary for October	<ul style="list-style-type: none"> <li>Green: 3 available</li> <li>Yellow: 1-2 available</li> <li>Red: 0 avail (Individual N-IMAT red if 50% of Section Chiefs and / or Team Leader is unavailable for deployment.)</li> </ul>
Regional IMAT	Green	13	7	54%	1	0	5	<u>Deployed:</u> Region IV Team 1 to NC (Hurricane Mathew) Region IV Team 2 to FL (DR-4280) Region VI Team 2 to LA (DR-4277) Region VIII to LA (DR-4277) Region X to LA (DR-4277) <u>Reconstituting:</u> Region II returning from LA (DR-4277)	<ul style="list-style-type: none"> <li>Green: &gt;6 teams available</li> <li>Yellow: 4 - 6 teams available</li> <li>Red: &lt; 4 teams available</li> </ul> R-IMAT also red if TL Ops / Log Chief is unavailable & has no qualified replacement
MERS	Green	18	17	94%	0	0	1		<ul style="list-style-type: none"> <li>Green = &gt;66% available</li> <li>Yellow = 33% to 66% available</li> <li>Red = &lt;33% available</li> </ul>

# Readiness – National and Regional Teams



Resource	Status	Total	FMC Available		Partially Available	Not Available	Status	Comments	Rating Criteria
NWC		5	5		0	0	Not Activated		<ul style="list-style-type: none"> <li>• Green = FMC</li> <li>• Yellow = PMC</li> <li>• Red = NMC</li> </ul>
NRCC		2	2	100%	0	0	Not Activated		
HLT		1	1	100%	0	0	Activated		
RRCCs		10	10	100%	0	0	Not Activated		
RWCs/MOCs		10	10	100%	0	0	Not Activated		



# FEMA

**FEMA's mission is to support our citizens and first responders to ensure that as a nation we work together to build, sustain, and improve our capability to prepare for, protect against, respond to, recover from, and mitigate all hazards.**