



FEMA

Daily Operations Briefing

Friday, September 2, 2016

8:30 a.m. EDT

Significant Activity - Sept 1-2



Significant Events: See Tropical Activity

Tropical Activity:

- Atlantic – Tropical Storm Gaston; Tropical Storm Hermine, Disturbance 1 – Low (10%)
- Eastern Pacific –Disturbance 1 Medium (70%), Disturbance 2 Low (10%)
- Central Pacific – Tropical Depression Madeline; Hurricane Lester
- Western Pacific – No significant activity threatening U.S. interests

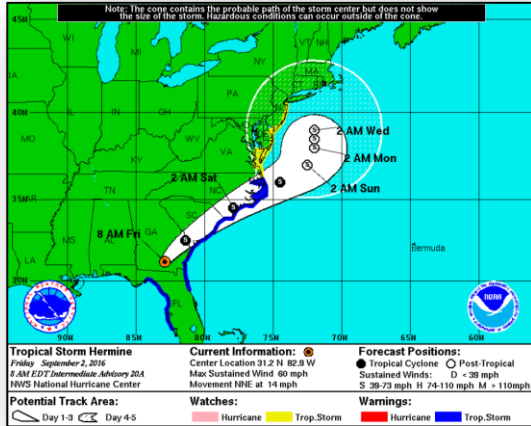
Significant Weather:

- Slight Chance of Severe thunderstorms – Southeast & Mid-Atlantic
- Heavy rain/possible flooding Southeast; flooding threat shifting to the Carolinas
- Red Flag Warnings – MT, ID, WY, UT, NV, & CA
- Elevated/Critical Fire Weather – CA, NV, UT, ID, & WY
- Isolated and Scattered Dry Thunderstorms – MT & WY
- Space weather – Moderate (G-2 level) storms observed the last 24 hours; Minor (G-1 level) storms predicted the next 24 hours

Earthquake Activity: No significant activity

Declaration Activity: None

Tropical Outlook – Tropical Storm Hermine

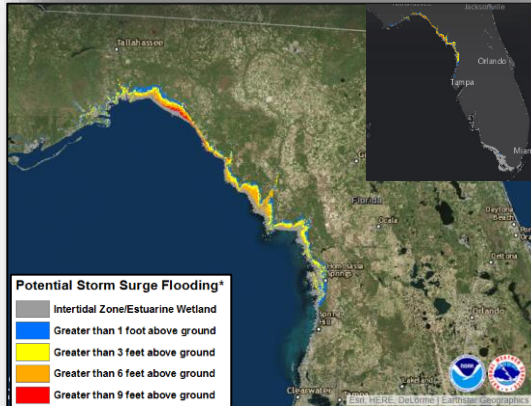


Tropical Storm Hermine (Advisory #20A, as of 8:00 a.m. EDT)

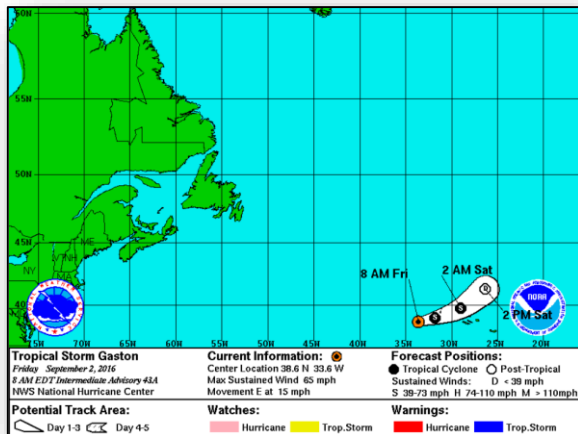
- Located 35 miles W of Valdosta, GA
- Moving NNE 14 mph; Expected to continue with some increase in forward speed
- Maximum sustained winds 60 mph
- Additional weakening forecast
- Expected to move across GA into Carolinas tonight and Saturday
- Tropical Storm Force Winds extend outward 175 miles
- Tornado Watch across FL, GA and SC until 8:00 am EDT

Impacts

- Mandatory evacuations for five Big Bend counties; voluntary evacuations for three counties, FL
- State offices closed in 51 counties, FL
- Power outages: 254k – FL; 56k - GA (DOE Eagle-I as of 7:45 am EDT)
- Amtrak suspended rail service yesterday in the Southeast U.S

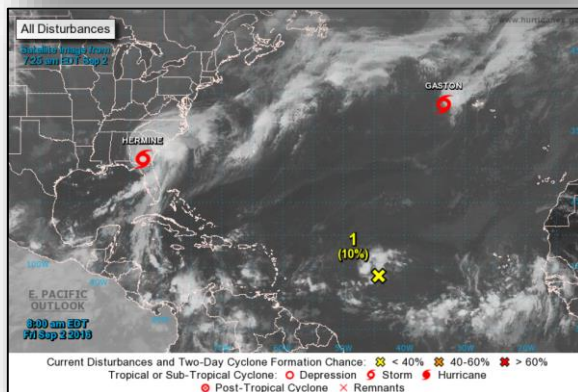


Tropical Outlook - Atlantic



Tropical Storm Gaston (Advisory #43A as 8:00 a.m. EDT)

- Located 265 miles W of Central Azores
- Moving E at 15 mph; a turn E or ENE with slower forward motion
- Maximum sustained winds 65 mph
- Forecast to become a remnant low on Saturday
- Tropical Storm Force Winds extend 150 miles
- No coastal watches or warnings in effect for US interest



Disturbance 1 (as of 8:00 a.m. EDT)

- Located 1,000 miles E of Lesser Antilles
- Any development is expected to be slow
- Moving slowly west
- Formation chance through 48 hours: Low (near 10%)
- Formation chance through 5 days: Low (20%)



Tropical Storm Hermine – Response

FEMA Region IV State/Local Response

- RWC at Enhanced Watch (24/7); RRCC activated to Level III (day shift – 7:00 am-7:00 pm EDT)
- LNOs deployed to FL, GA, SC, & NC EOCs
- IMAT-2 deployed to FL EOC
- ISB established at Maxwell AFB

Florida

- EOC at Level I (Full Activation); Governor declared State of Emergency
- 43 shelters open with 281 occupants (ARC midnight shelter count, 6:25 am EDT, Sept 2)
- 100 National Guard personnel activated and pre-positioned

Georgia

- EOC at Level I (Full Activation); Governor declared State of Emergency
- Five shelters open with 143 occupants (ARC midnight shelter count, 6:25 am EDT, Sept 2)

North Carolina

- EOC will go to Level III (Partial Activation) at 1 pm EDT
- Governor declared State of Emergency

South Carolina

- EOC at Level IV (Monitoring)
- Schools closed in many counties

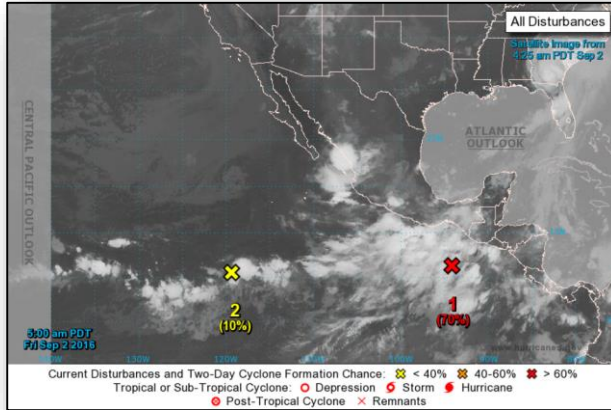
Region III

- RWC will go to Enhanced Watch on Saturday Sep 3
- LNOs deployed to VA EOC

Federal Response – FEMA HQ

- NWC at Enhanced Watch (24/7)
- N-IMAT East 1 deployed to GA to support Region IV RRCC

Tropical Outlook – East Pacific



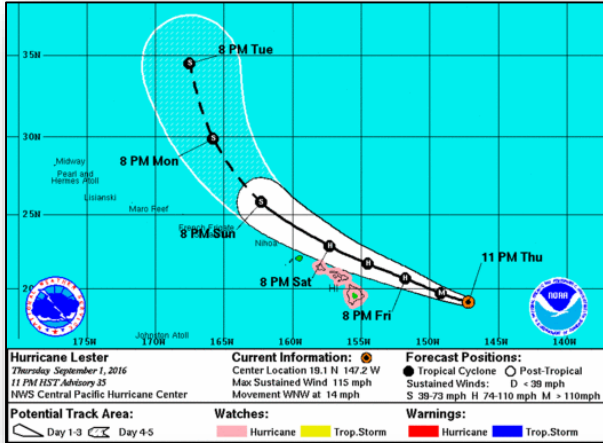
Disturbance 1 (as of 8:00 a.m. EDT)

- Located several hundred miles SE of Acapulco, Mexico
- Conducive for development next couple of days
- Tropical depression likely to form this weekend
- Moving slow WNW
- Formation chance through 48 hours: High (70%)
- Formation chance through 5 days: High (80%)

Disturbance 2 (as of 8:00 a.m. EDT)

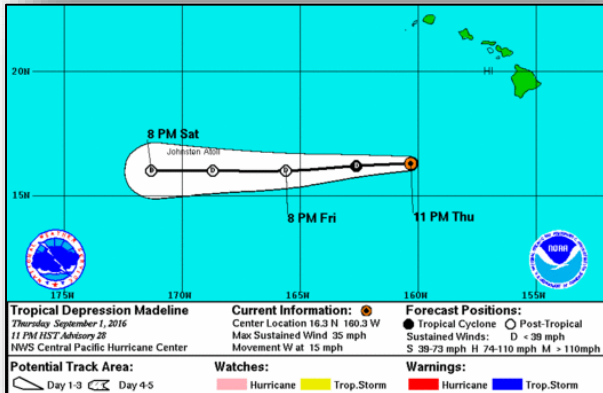
- Located 1,000 miles SSW of southern tip of Baja California peninsula, Mexico
- Development, if any, expected to be slow
- Formation chance through 48 hours: Low (10%)
- Formation chance through 5 days: Low (20%)

Tropical Outlook – Central Pacific



Hurricane Lester CAT-3 (Advisory #35A as of 8:00 a.m. EDT)

- Located 480 miles E of Hilo, HI
- Moving WNW at 14 mph
- Maximum sustained winds 110 mph
- General motion expected to continue for 48 hours
- Gradual weakening forecast during the next couple of days
- Hurricane force winds extend 40 miles
- Tropical storm force winds extend 140 miles
- Hurricane Watch in effect for Hawaii, Maui counties & Oahu



Tropical Depression Madeline (Advisory #28 as of 5:00 a.m. EDT)

- Located 380 miles SSW of Honolulu, HI
- Moving W at 15 mph; this motion is expected for next 48 hours
- Maximum sustained winds 35 mph
- Forecast to become a post tropical remnant later today

Madeline/Lester – Response

State/Local Response

- HI EOC stood down until 5:00 a.m. EDT Saturday
- Governor signed pre-landfall emergency proclamation
- No shelters open; ARC teams deployed to HI
- All ports open; will begin closing on a rolling basis starting Friday
- Thirteen National Guard personnel deployed to HI

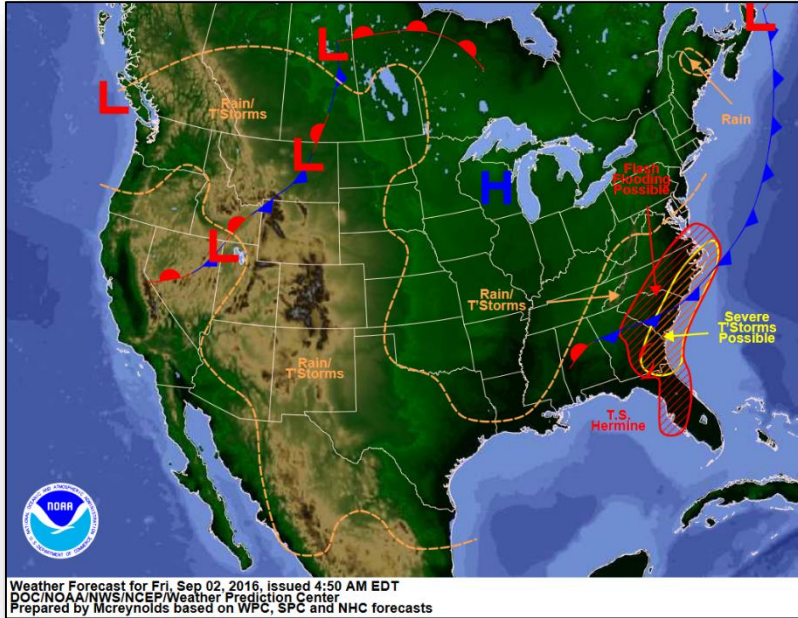
FEMA Region IX

- RWC at Enhanced Watch, 24/7
- RRCC at Partial Activation (Level II day shift 12:00 pm – 12:00 am EDT, Level III night shift)
- ESFs 1, 2, 3, 7, 8, 12, USCG & DCE deployed to HI
- IMAT 1 deployed to HI; 2 LNOs deployed to HI

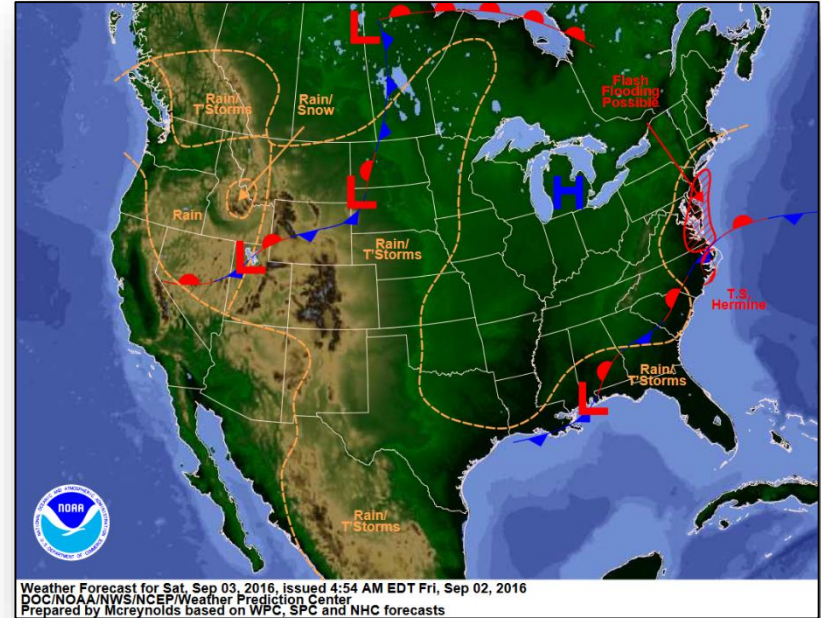
FEMA HQ

- NRCC at Level II, 24/7 with ESFs 1, 2, 3, 5, 6, 7, 8, 12, 15 and all LNOs
- National IMAT West on standby for deployment to HI
- ISB and MERS personnel deployed to DC HI; FEMA Corps teams deployed to PAO
- Two IST WHITE personnel deployed for Hurricane Lester as US&R SME support to R-IX IMAT
- USACE deployed personnel to HI

National Weather Forecast

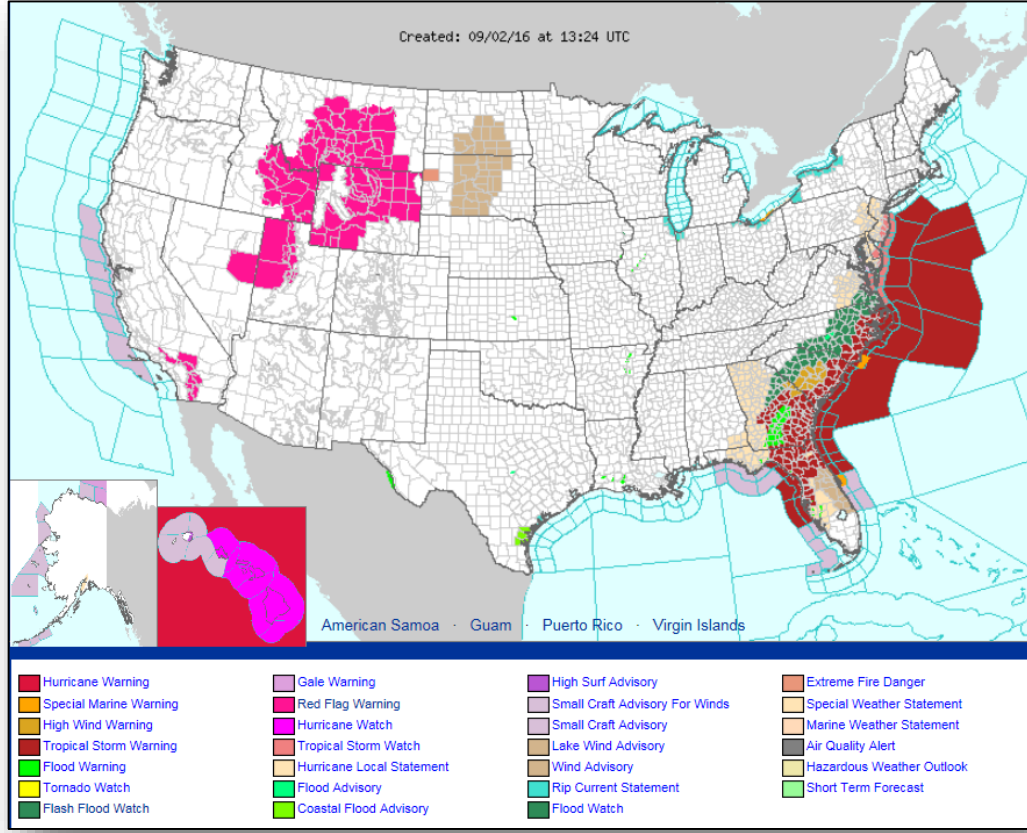


Today



Tomorrow

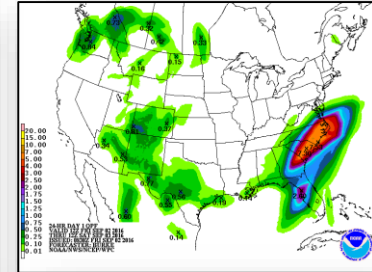
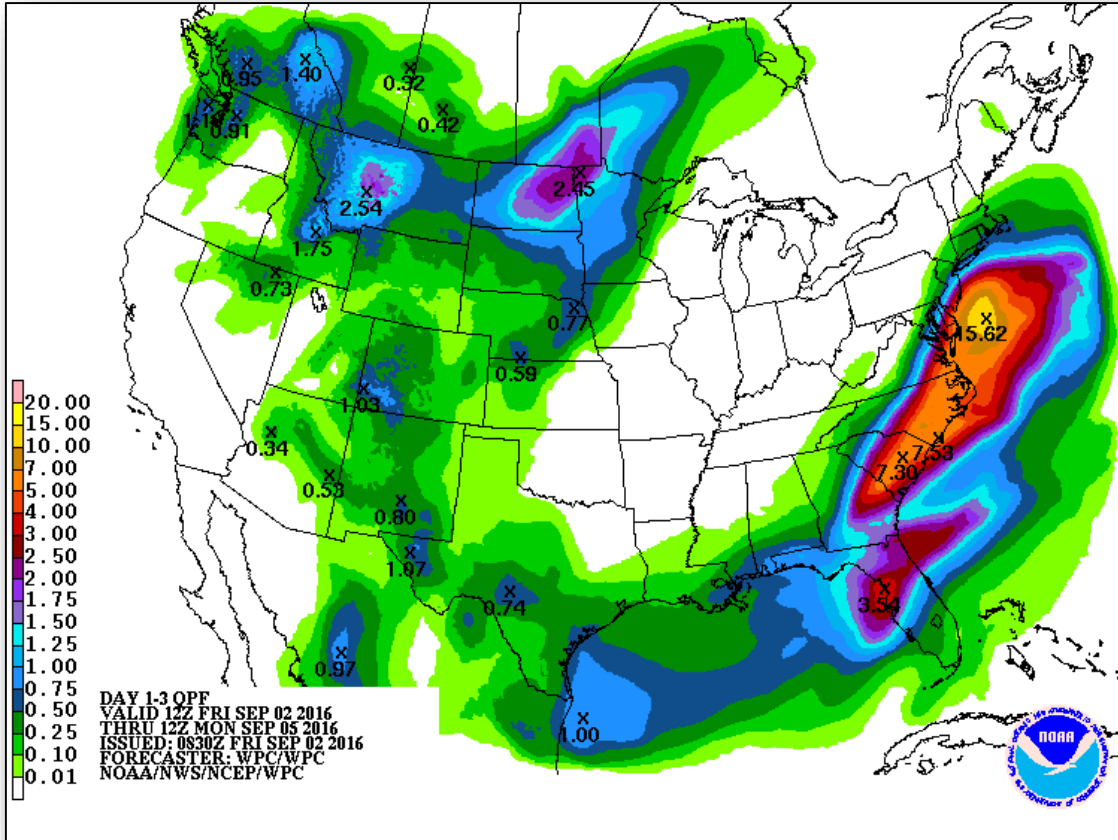
Active Watches & Warnings



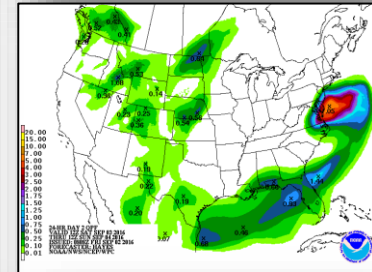
Precipitation Forecast - Days 1-3



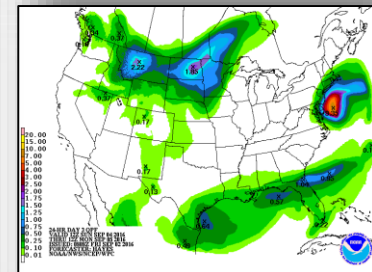
FEMA



Day 1

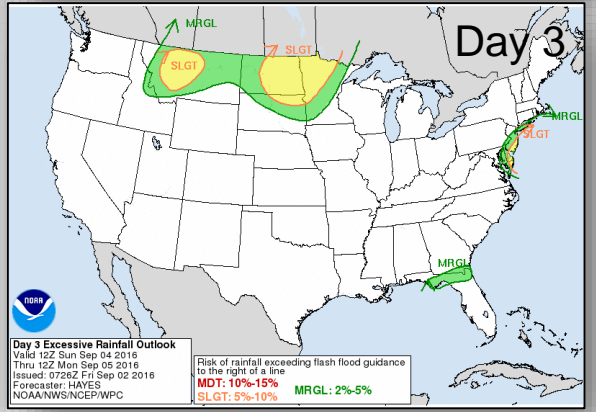
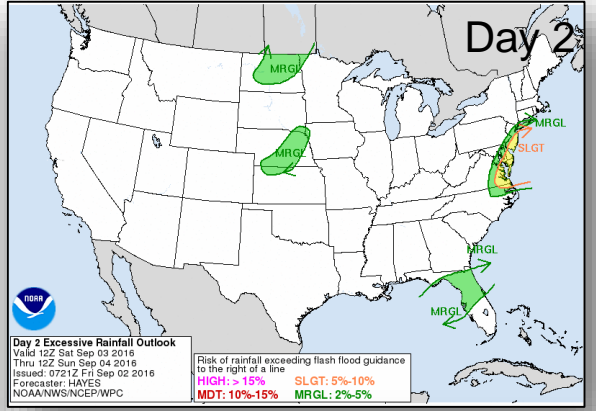
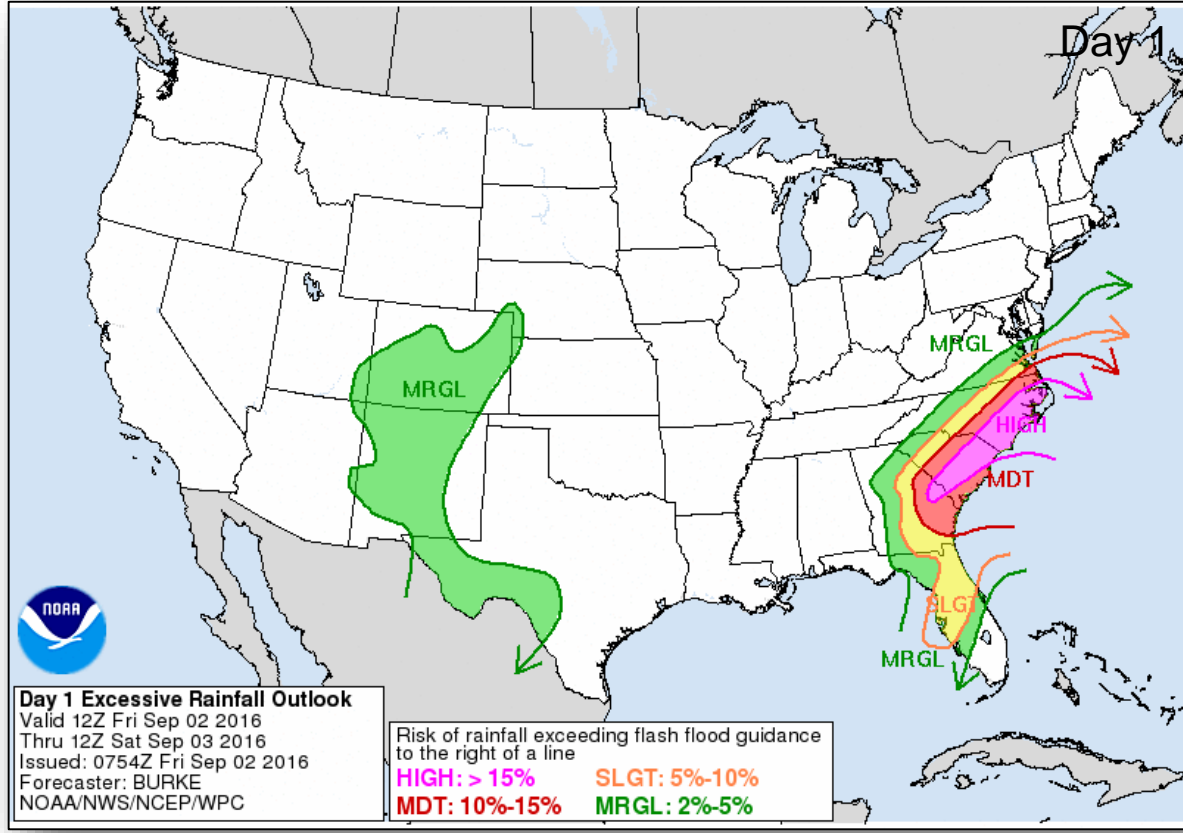


Day 2

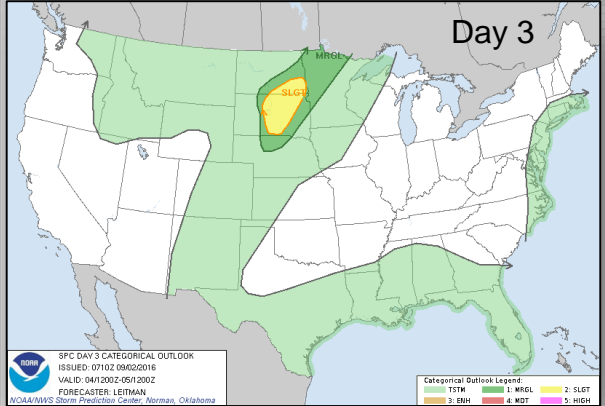
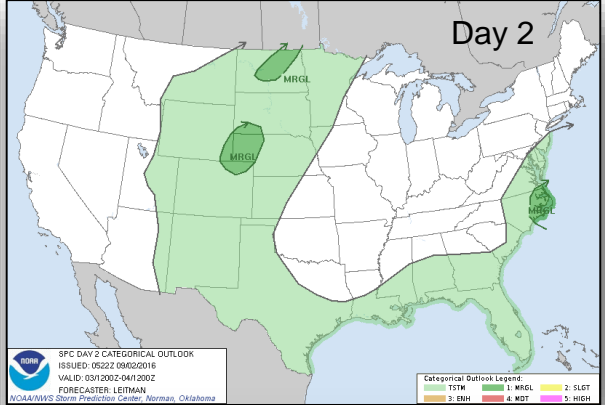
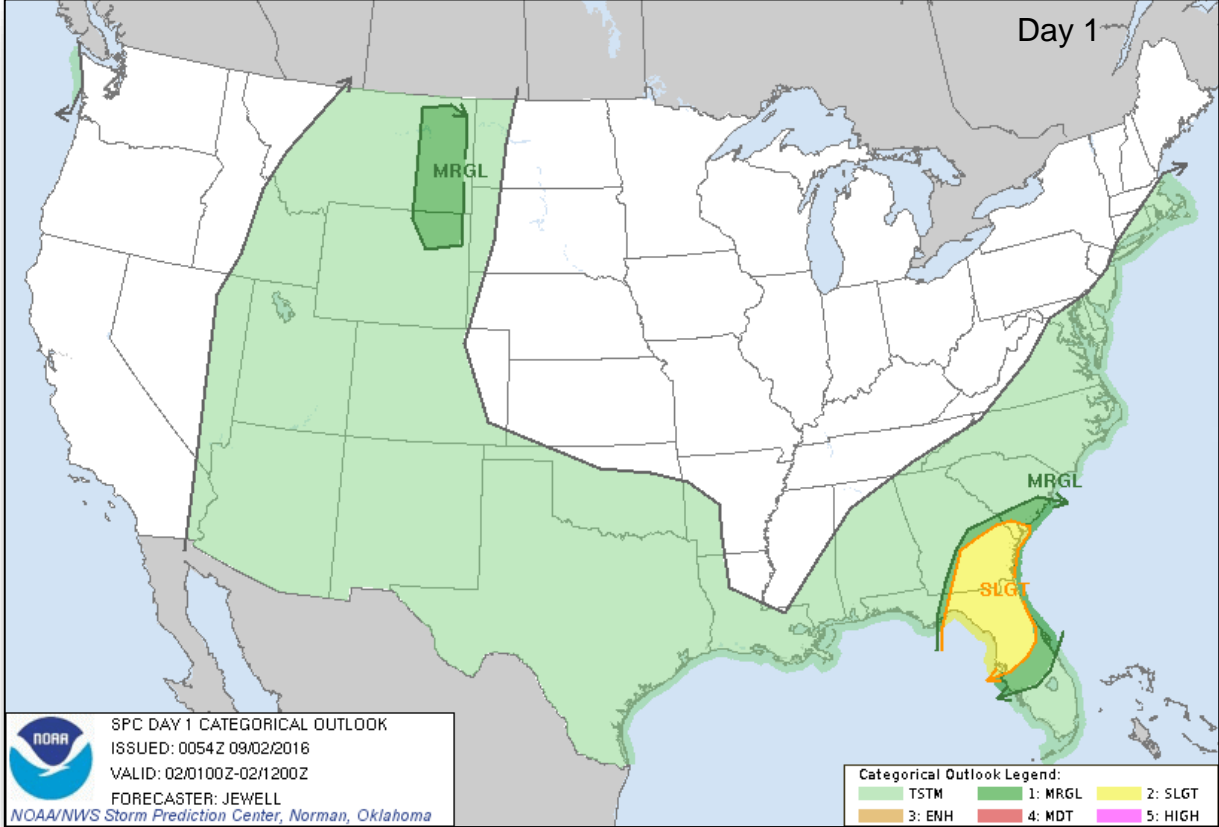


Day 3

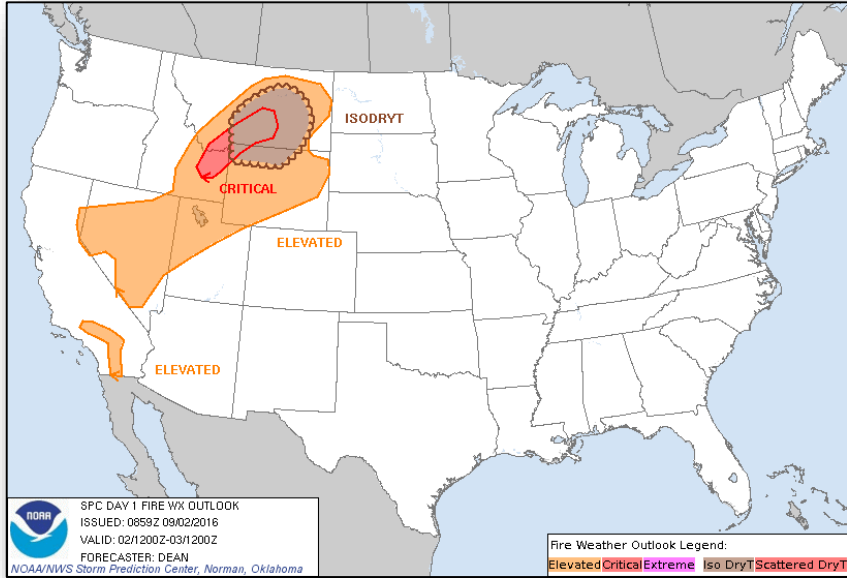
Flash Flood Potential – Days 1-3



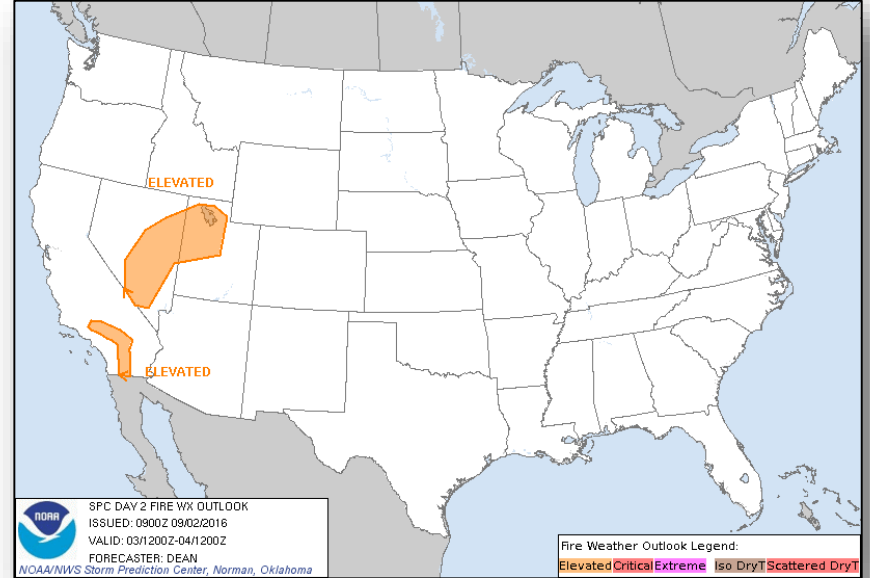
Severe Weather Outlook - Days 1-3



Fire Weather Outlook

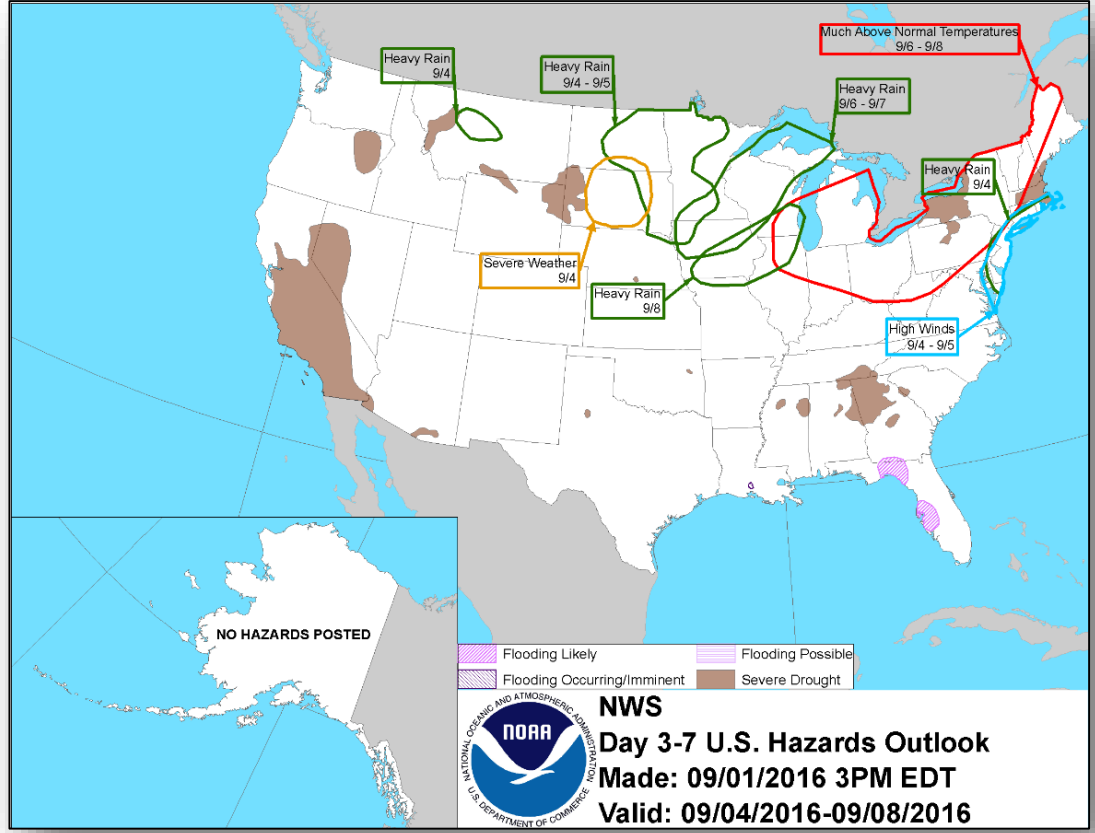


Day 1

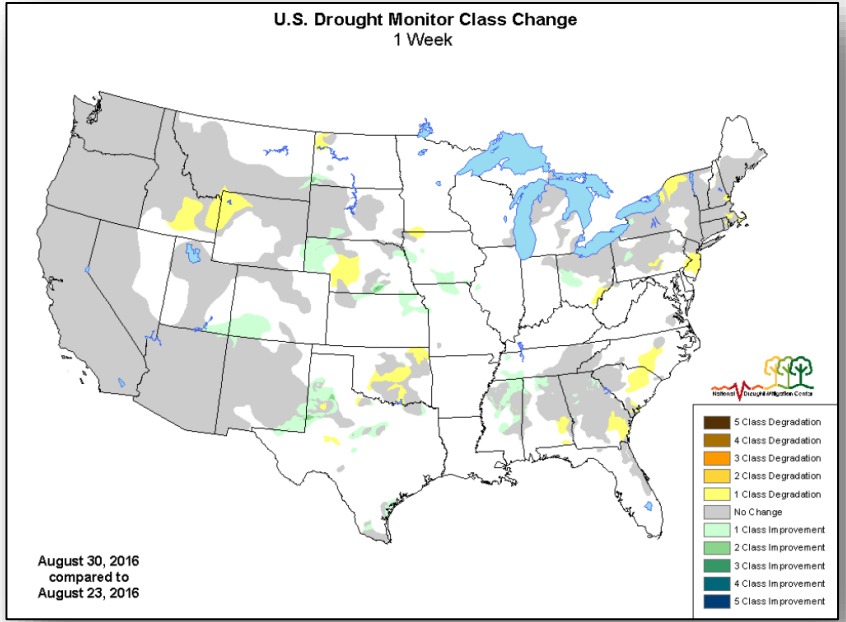
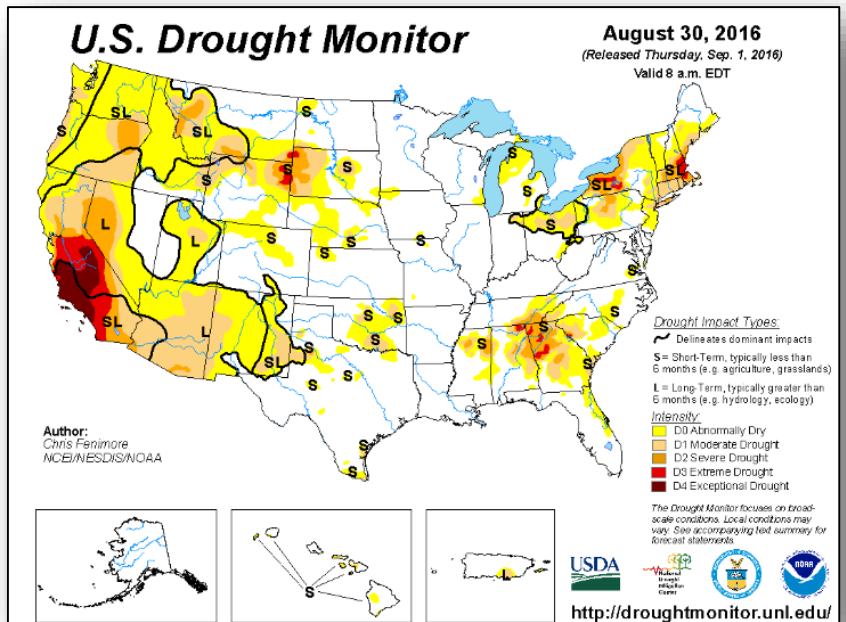


Day 2

Hazards Outlook - Sep 4-8



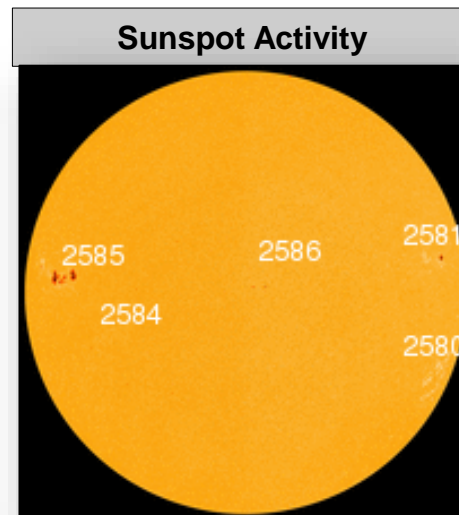
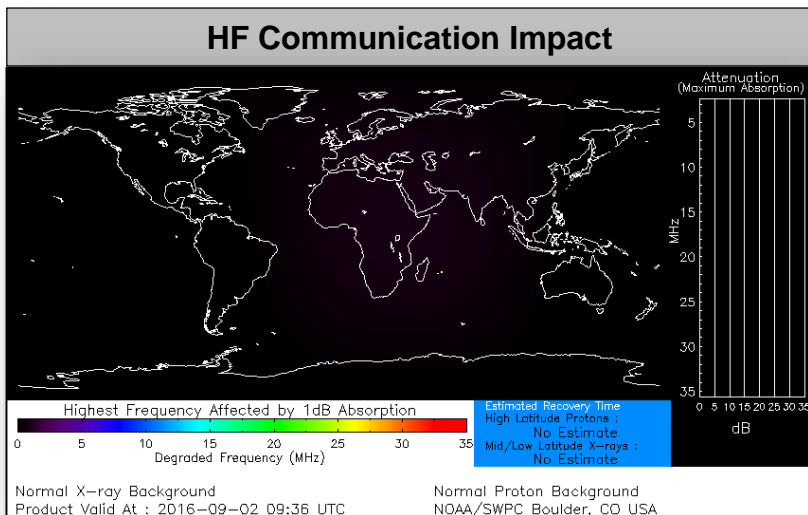
U.S. Drought Monitor





Space Weather

	Past 24 Hours	Current	Next 24 Hours
Space Weather Activity	Moderate	None	Minor
Geomagnetic Storms	G2	None	G1
Solar Radiation Storms	None	None	None
Radio Blackouts	None	None	None



Wildfire Summary



Fire Name (County)	FMAG #	Acres burned	% Contained	Evacuations (Residents)	Structures Threatened	Structures Damaged / Destroyed	Fatalities / Injuries
Oregon (1)							
Gold Canyon Fire (Josephine County) FINAL	FEMA-5153-FM-OR	61	60% (+30)	Lifted	1,115 (105 homes)	0 / 0	0 / 0

Joint Preliminary Damage Assessments



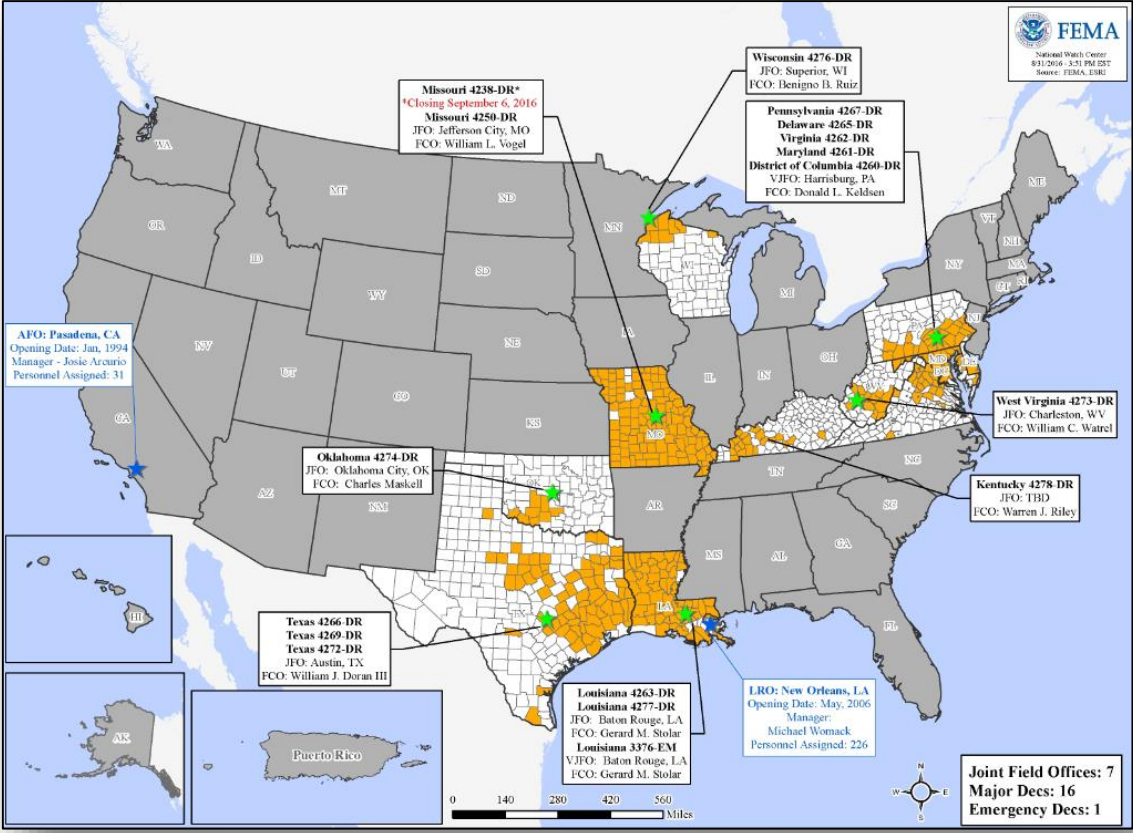
Region	State / Location	Event	IA/PA	Number of Counties		Start - End
				Requested	Complete	
X	Spokane Reservation	Cayuse Mountain Wildfire August 21, 2016 and continuing	IA	1	0	9/7 – TBD
			PA	1	0	9/7 – TBD

Disaster Requests & Declarations



Declaration Requests in Process		Requests APPROVED (since last report)	Requests DENIED (since last report)
1	Date Requested	0	0
MD – DR Severe Storms and Flooding	August 12, 2016		

Open Field Offices as of September 2, 2016



FEMA Readiness - Deployable Teams & Assets



Resource	Status	Total	FMC Available		Partially Available	Not Available	Detailed, Deployed, Activated	Comments	Rating Criterion
FCO	Yellow	35	6	17%	0	0	29		OFDC Readiness: FCO Green Yellow Red Type 1 3+ 2 1 Type 2 4+ 3 2 Type 3 4+ 3 2 FDRC 3 2 1
FDRC	Red	10	1	10%	0	3	6		
US&R	Green	28	27	96%	1	0	0	NJ-TF1: Partially Mission Capable Two White IST personnel deployed for Hurricane Lester as US&R SME support to the R-IX IMAT in HI	<ul style="list-style-type: none"> • Green = Available / FMC • Yellow = Available / PMC • Red = Out-of-Service • Blue = Assigned / Deployed
National IMAT	Yellow	3	1	33%	0	0	2	East 2 to LA (DR-4277) East 1 deployed to GA West to AL (Exercise) Aug 28-Sep 2 (Available to deploy if needed)	<ul style="list-style-type: none"> • Green: 3 available • Yellow: 1-2 available • Red: 0 avail (<i>Individual N-IMAT red if 50% of Section Chiefs and / or Team Leader is unavailable for deployment.</i>)
Regional IMAT	Yellow	13	6	46%	1	0	6	Region III reconstituting Deployed: Region II to LA (DR-4277) Region V to WI (DR-4276) Region VI Team 2 to LA (DR-4277) Region VIII to LA (DR-4277) Region IX Team-1 to HI for Madeline Region X to LA (DR-4277)	<ul style="list-style-type: none"> • Green: >6 teams available • Yellow: 4 - 6 teams available • Red: < 4 teams available <i>R-IMAT also red if TL Ops / Log Chief is unavailable & has no qualified replacement</i>
MERS	Green	18	14	78%	0	0	4	Assets are supporting: PR (Zika UCG) LA (DR-4277) HI (Madeline)	<ul style="list-style-type: none"> • Green = >66% available • Yellow = 33% to 66% available • Red = <33% available

FEMA Readiness - National & Regional Teams



Resource	Status	Total	FMC Available		Partially Available	Not Available	Status	Comments	Rating Criteria
NWC	Green	5	5	100%	0	0	Activated	Enhanced Watch, 24/7 (Hermine)	<ul style="list-style-type: none"> • Green = FMC • Yellow = PMC • Red = NMC
NRCC	Green	2	2	100%	0	0	Activated	Level II, 24/7 (Madeline & Lester)	
HLT	Green	1	1	100%	0	0	Activated		
DEST	Green						Not Activated		
RRCCs	Green	10	9	90%	0	1	Activated	Region IX at Level II (Day shift) / Level III (Night shift) Region IV at Level III	
RWCs/MOCs	Green	10	9	90%	0	1	Activated	Region IX at Enhanced Watch, 24/7 Region IV at Enhanced Watch, 24/7	



FEMA

FEMA's mission is to support our citizens and first responders to ensure that as a nation we work together to build, sustain, and improve our capability to prepare for, protect against, respond to, recover from, and mitigate all hazards.