



# FEMA

## Daily Operations Briefing

Tuesday, August 30, 2016

8:30 a.m. EDT

# Significant Activity - August 29-30



**Significant Events:** See Tropical Activity

## **Tropical Activity:**

- Atlantic – Hurricane Gaston; Tropical Depression Eight, Tropical Depression Nine, Disturbance 1 – Low (0%)
- Eastern Pacific – Hurricane Lester; Disturbance 1 – Low (0%)
- Central Pacific – Hurricane Madeline; Disturbance 3 – Low (20%)
- Western Pacific – No significant activity threatening U.S. interests

## **Significant Weather:**

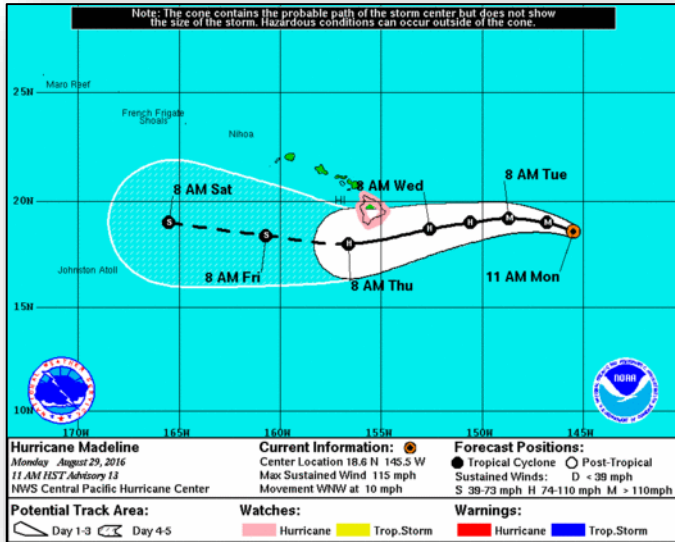
- Isolated thunderstorms – Northern Rockies & Northern Plains
- Flash flooding – NM, TX, OK, KS, NE, MO, IA, IN & FL
- Rain and thunderstorms – Southwest, Rockies, Central and Southern Plains, Upper Mississippi Valley, Ohio Valley, Southeast
- Red Flag Warnings – WY, NV, ID, OR & CA
- Elevated Fire Weather – CA, NV, OR & ID; Critical Fire Weather – None
- Space weather – No space weather storms in the last 24 hours; Minor (G-1 level) storms predicted in the next 24 hours

**Earthquake Activity:** No significant activity

## **Declaration Activity:**

- Amendment No.7 to FEMA-4273-DR-WV

# Hurricane Madeline



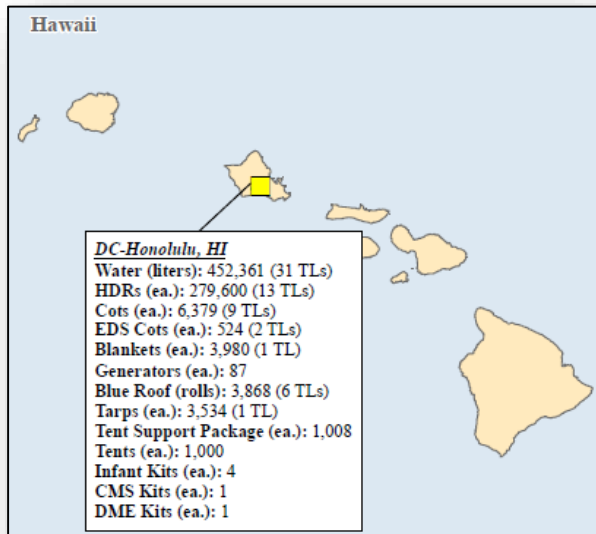
## Hurricane Madeline CAT-4 (Advisory #15 as of 5:00 a.m. EDT)

- Located 515 miles E of Hilo, Hawaii
- Moving W at 9 mph
- Maximum sustained winds at 130 mph
- Some weakening is expected through Wednesday
- Hurricane-force winds extend outward up to 30 miles
- Tropical-storm-force Winds extend outward up to 125 miles

## Forecast Impacts

- Hurricane conditions are possible over Hawaii County on Wednesday; a Hurricane Watch is in effect
- Swells are expected to reach the Hawaiian Islands over the next couple days, possibly becoming damaging along some coastlines Wednesday and Thursday
- Heavy rains may reach Hawaii County on Wednesday and may impact other islands into Friday
- Rain accumulations of 5-10 inches with isolated maximum amounts near 15 inches expected, especially over windward portions of the Big Island; dangerous flash floods and mudslides possible

# Hurricane Madeline - Response



## State/Local Response

- HI EOC at normal operations
- Local American Red Cross staff on standby
- No ports closed
- No unmet needs; no requests for FEMA assistance

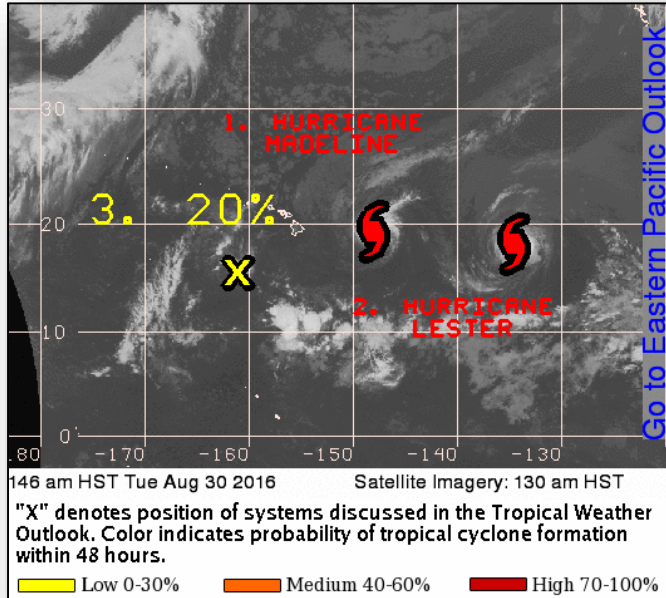
## Federal Response – FEMA HQ

- ISB personnel deployed to DC HI

## Region IX

- RWC at Enhanced Watch
- RRCC will go to Level III (at 9:00 am PDT)
- IMAT 1 deployed to HI (with ESFs 2, 3, 8, 12, USCG & DCE)

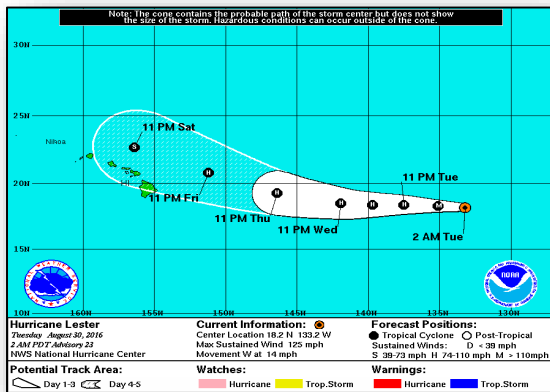
# Tropical Outlook - Central Pacific



## Disturbance 3 (as of 8:00 a.m. EDT)

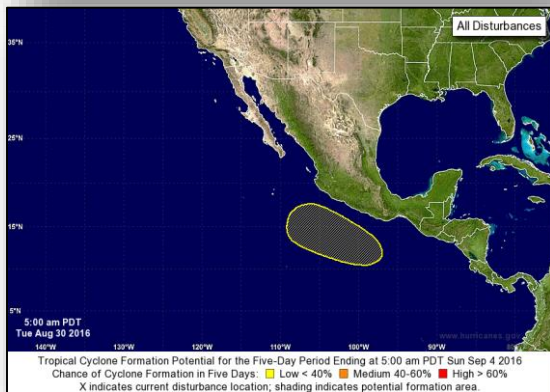
- Located 500 miles SSW of Honolulu, Hawaii
- Moving slowly WNW
- Development, if any, will be slow to occur
- Formation chance through 48 hours: low (20%)

# Tropical Outlook - Eastern Pacific



## Hurricane Lester CAT-3 (Advisory #23 as of 5:00 a.m. EDT)

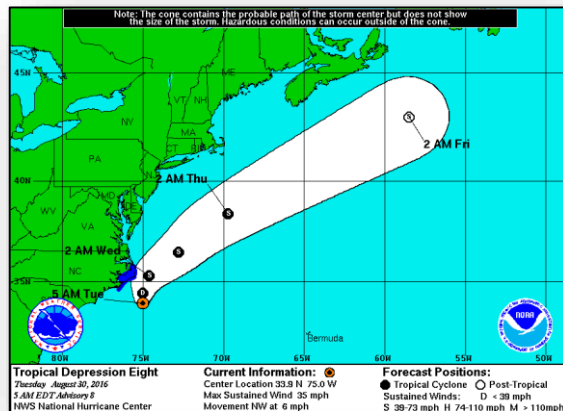
- Located 1,435 miles E of Hilo, HI
- Moving W at 14 mph
- Maximum sustained winds at 125 mph
- General motion continuing next couple of days
- Some weakening forecast next 48 hours
- Hurricane-Force Winds extend outward up to 35 miles
- Tropical-Storm-Force Winds extend outward up to 90 miles
- No coastal Watches and Warnings in effect



## Disturbance 1 (as of 8:00 a.m. EDT)

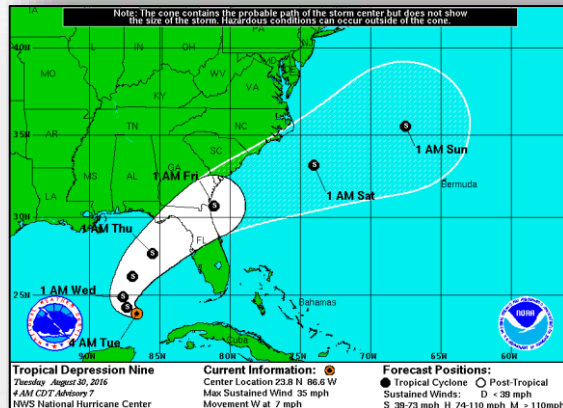
- Located few hundred miles S of the south-central coast of Mexico
- Expected to be conducive for slow development
- Formation chance through 48 hours: Low (near 0%)
- Formation chance through 5 days: Low (near 30%)

# Tropical Outlook - Atlantic



## Tropical Depression EIGHT (Advisory #8 as of 5:00 a.m. EDT)

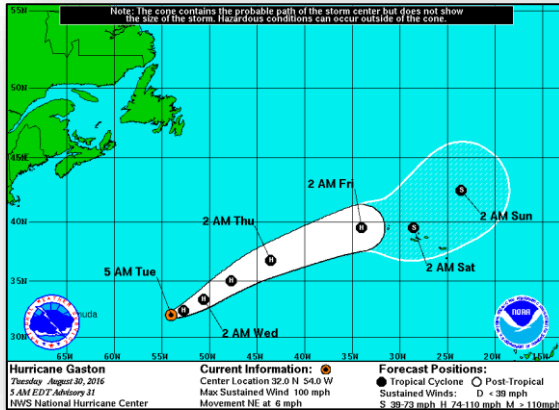
- Located 95 miles SE of Cape Hatteras, NC; moving NW at 6 mph
- Maximum sustained winds at 35 mph
- Slow strengthening forecast next 48 hours; expected to become a Tropical Storm in the next 24 hours
- Tropical storm warning in effect for the coast of NC from Cape Lookout to Oregon Inlet
- Rainfall of 1-3 inches with isolated max amounts of 5 inches expected over far eastern NC and Outer Banks



## Tropical Depression NINE (Advisory #7, as of 5:00 a.m. EDT)

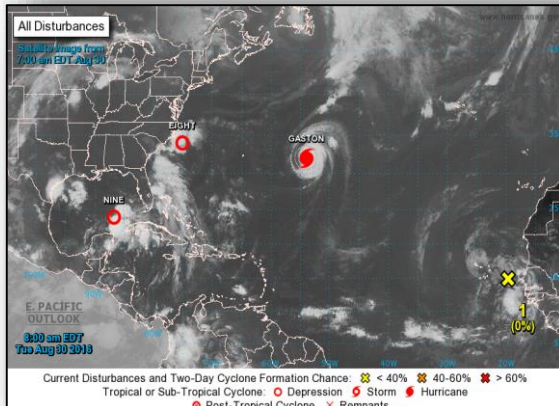
- Located 305 miles W of Key West FL; moving W at 7 mph
- Maximum sustained at 35 mph
- A turn WNW expected later tonight; followed by a slow NW motion Tuesday
- Some strengthening forecast during the next 48 hours; expected to a tropical storm today
- Rainfall of 5 - 10 inches over FL peninsula with isolated max amounts of 15 inches
- Flooding and flash flooding possible
- No coastal Watches and Warnings in effect

# Tropical Outlook - Atlantic



## Hurricane Gaston CAT-2 (Advisory #31 as 5:00 a.m. EDT)

- Located 630 miles E of Bermuda; moving NE at 6 mph
- Increase in forward speed expected
- Maximum sustained winds at 100 mph
- Hurricane-force winds extend outward up to 40 miles
- Tropical-storm-force Winds extend outward up to 140 miles
- No coastal watches and warnings in effect

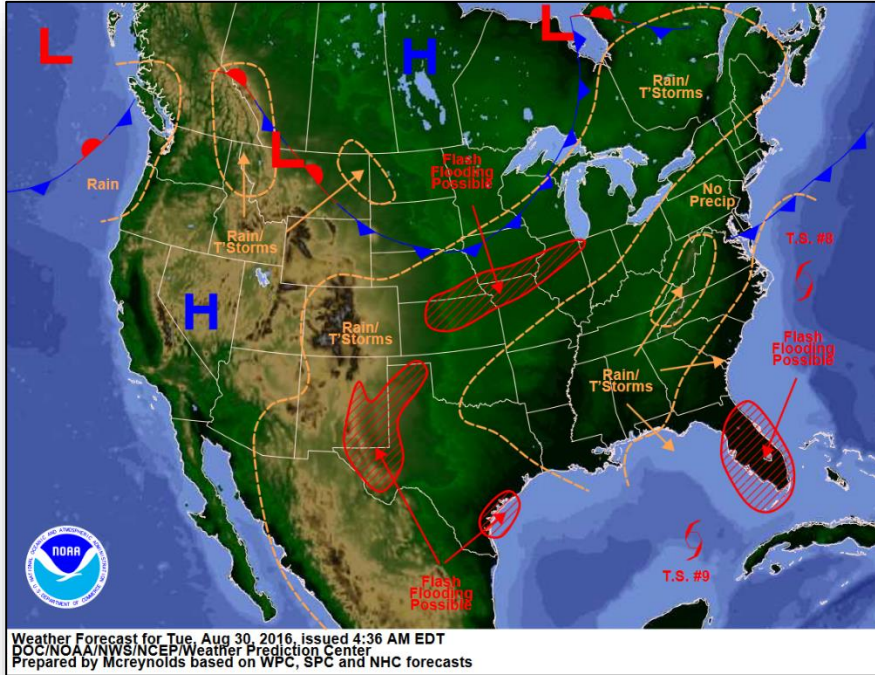


## Disturbance 1 (as of 8:00 a.m. EDT)

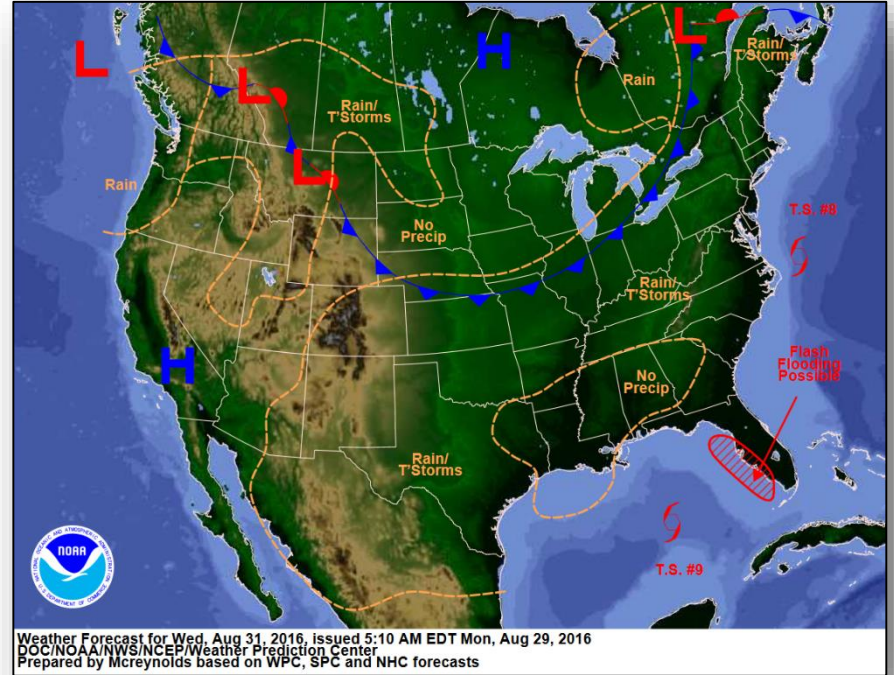
- Weak area of low pressure located near the Cabo Verde Islands
- Moving W at 15 to 20 mph
- Conditions expected to become more favorable late this week
- Formation chance through 48 hours: Low (near 0%)
- Formation chance through 5 days: Medium (40%)



# National Weather Forecast

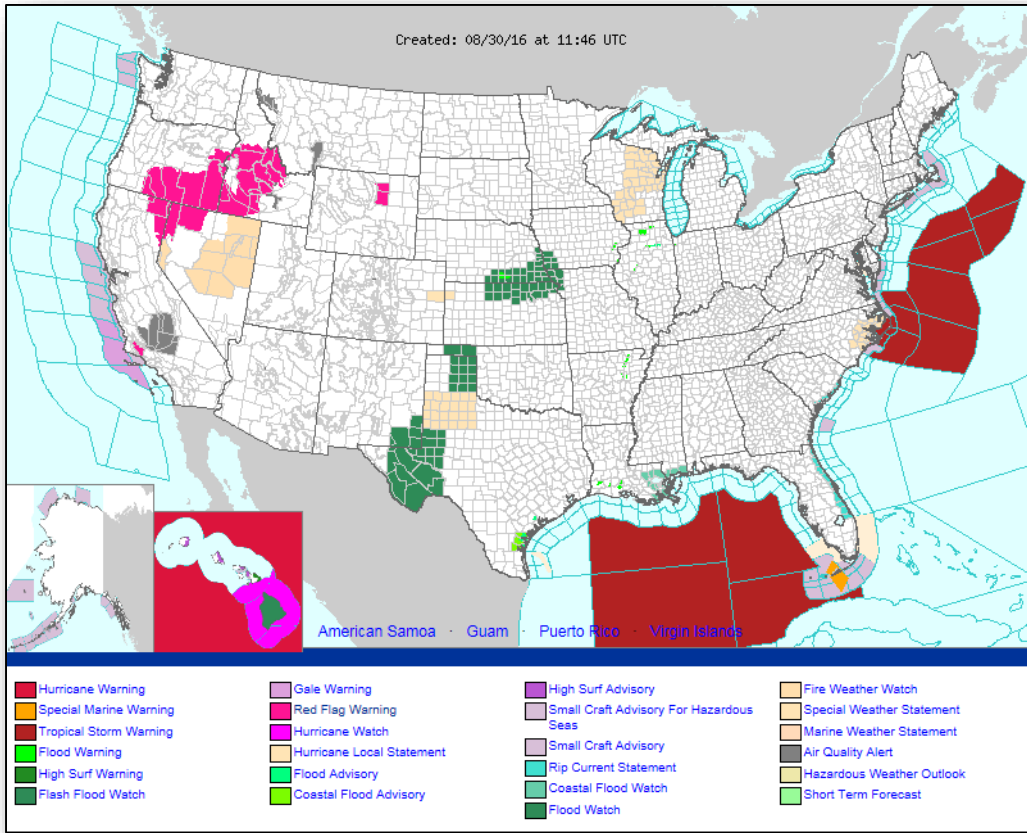


*Today*

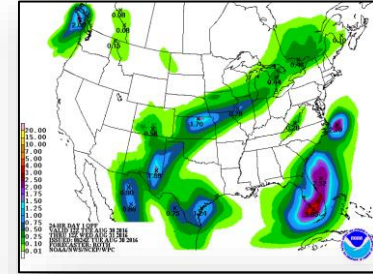
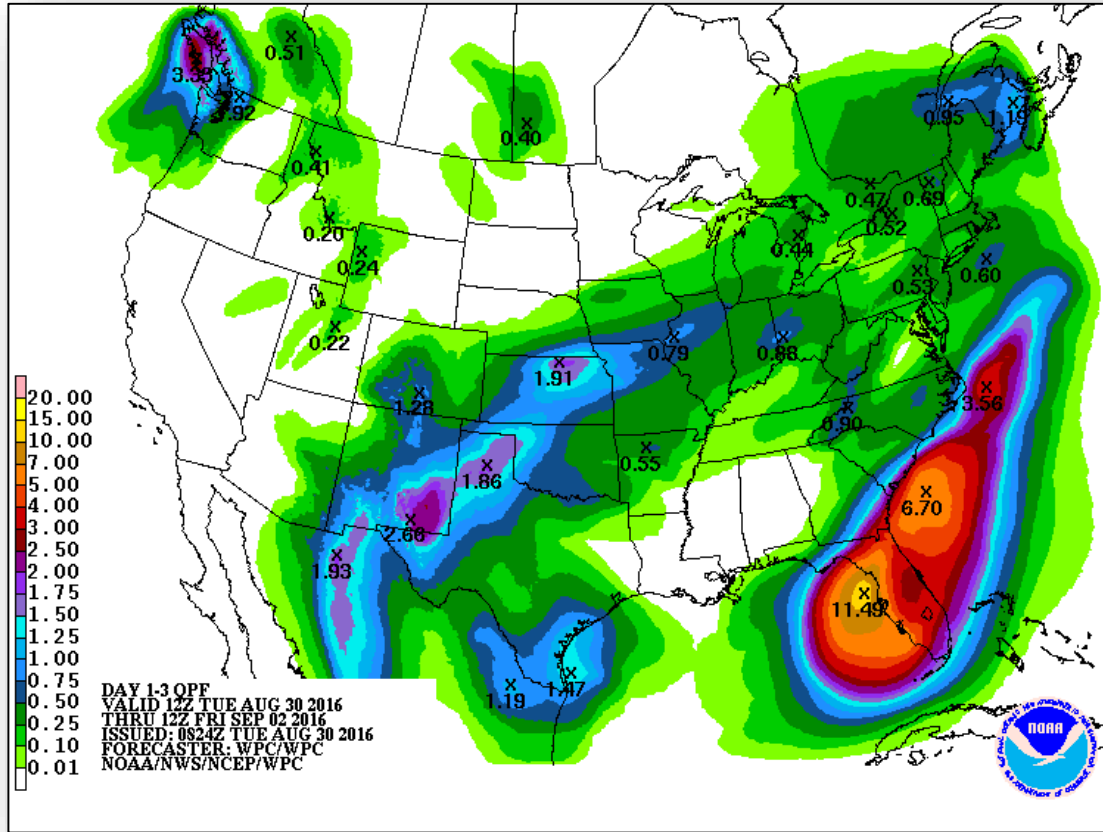


*Tomorrow*

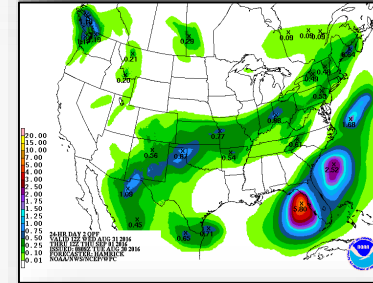
# Active Watches & Warnings



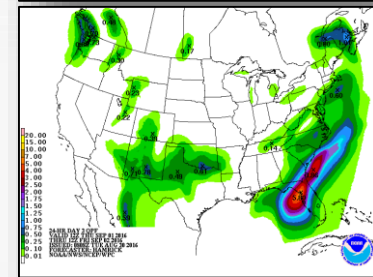
# Precipitation Forecast - Days 1-3



Day 1

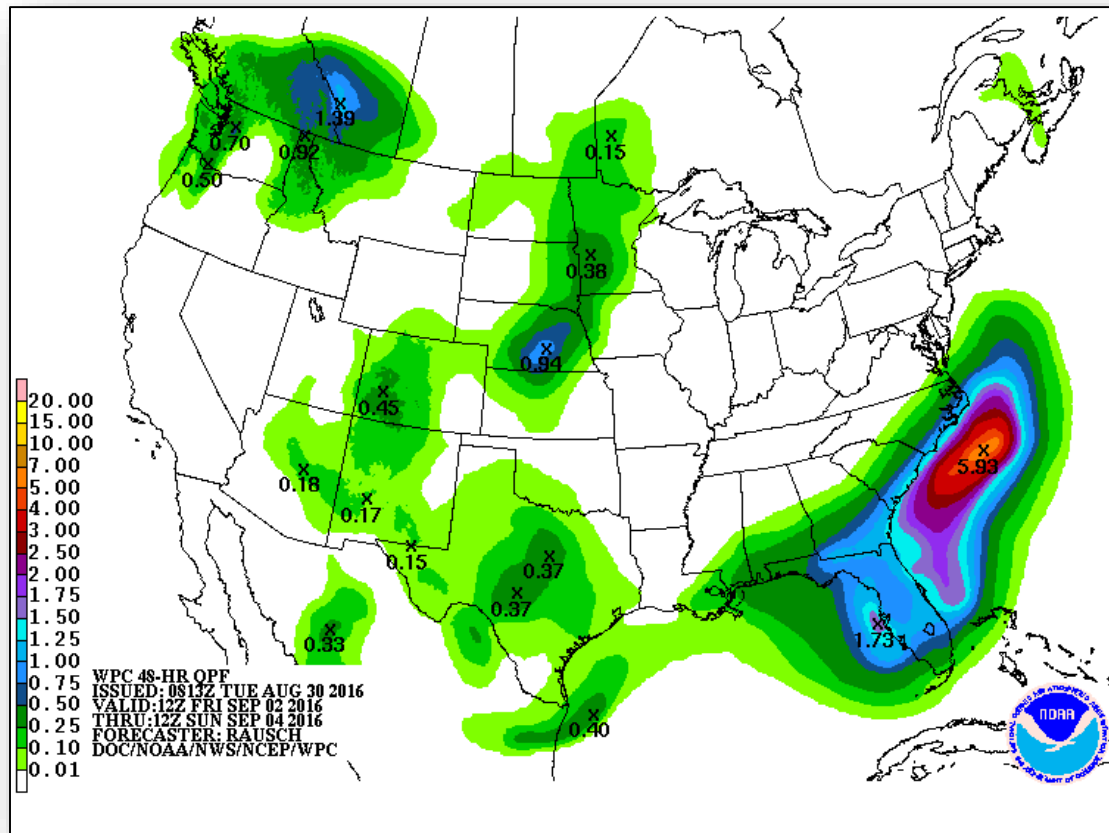


Day 2



Day 3

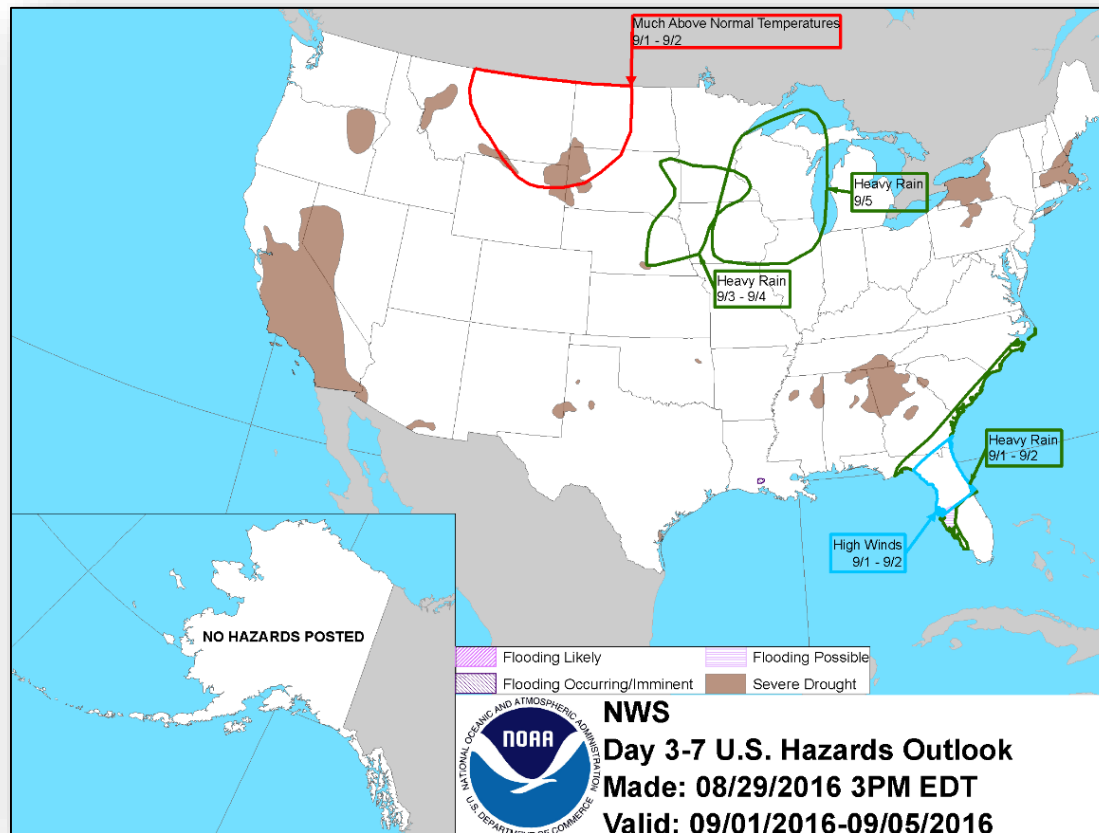
# Precipitation Forecast - Days 4-5



# Hazards Outlook - Sep 1-5



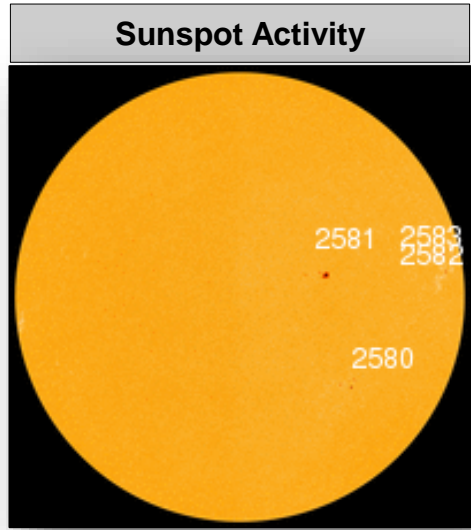
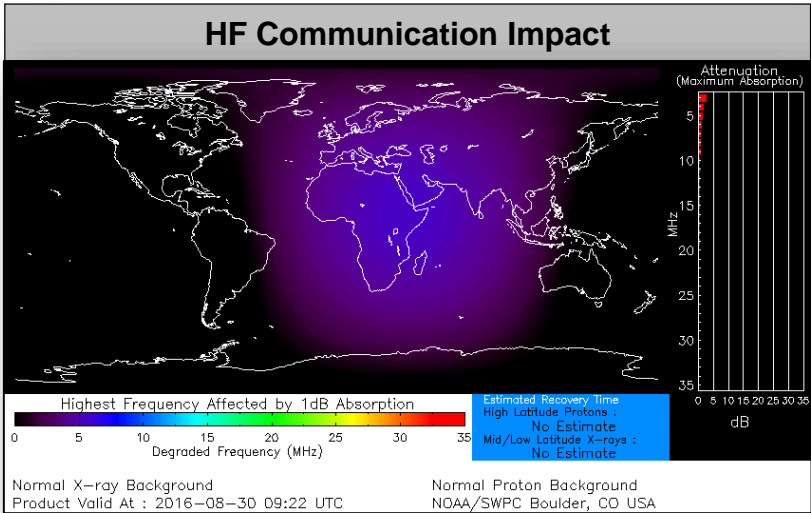
FEMA





# Space Weather

	Past 24 Hours	Current	Next 24 Hours
Space Weather Activity	None	None	Minor
Geomagnetic Storms	None	None	G1
Solar Radiation Storms	None	None	None
Radio Blackouts	None	None	None



# Wildfire Summary



Fire Name (County)	FMAG #	Acres burned	% Contained	Evacuations (Residents)	Structures Threatened	Structures Damaged / Destroyed	Fatalities / Injuries
<b>California (1)</b>							
Cedar Fire (Kern & Tulare Counties)	FEMA-5150-FM-CA	29,206 (+166)	60%	Mandatory	1,381 (1,294 homes)	0 / 6 homes	0 / 5 (+1)
<b>Washington (1)</b>							
Suncrest Fire (Chelan County)	FEMA-5152-FM-WA	496 (+96)	50 (+50)%	Mandatory / Voluntary	118 homes	0 / 0	0 / 1

# FMAG Requests and Declarations



Action (since last report)		Total	FMAG No. and State		
Requests DENIED		0			
Requests APPROVED		1	FEMA-5152-FM; Washington		
Approved FMAG Data					
Year	Current YTD	MTD	*Monthly Average	Cumulative Acres Burned YTD	Cumulative Denied FMAGs YTD
2016	35	13	13.3	313,719	3
Year	Total Previous FY	**Yearly Average		Total Acres Burned Previous Year	Total Denied FMAGs Previous Year
2015	33	36		250,658	2
* Reflects the 3-year average for current month/ ** Reflects 3-year total average					

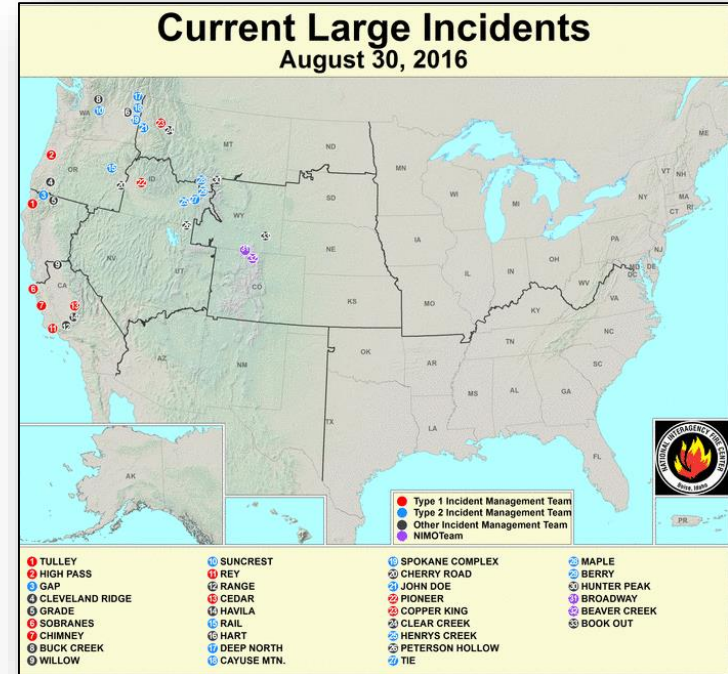


# National Fire Activity



## National Preparedness Level: 4

Initial attack activity	Light (75) new fires
New large fires	0
Large fires contained	3
Uncontained large fires	24
NIMOs committed	1
Type 1 IMTs committed	8
Type 2 IMTs committed	10



**National Preparedness Level 4:** Three (3) or more Geographic Areas are experiencing incidents requiring Type 1 and 2 Incident Management Teams; competition exists for resources between Geographic Areas. Nationally, 60% of Type 1 and 2 Incident Management Teams and crews are committed.

# Joint Preliminary Damage Assessments



Region	State / Location	Event	IA/PA	Number of Counties		Start - End
				Requested	Complete	
III	MD	Severe Weather & Heavy Rains July 30, 2016	PA	1	0	8/4 – TBD

# Disaster Requests & Declarations



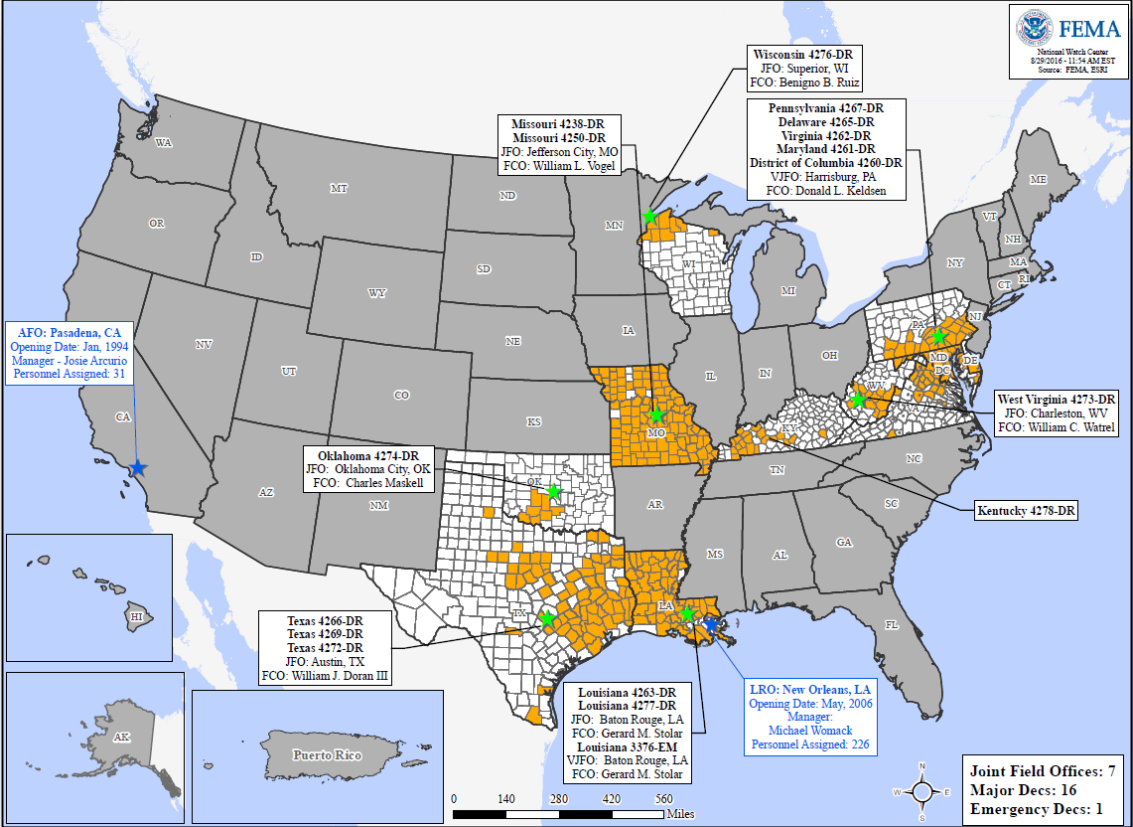
Declaration Requests in Process		Requests APPROVED (since last report)	Requests DENIED (since last report)
1	Date Requested	0	0
MD – DR Severe Storms and Flooding	August 12, 2016		

# Disaster Amendments



Amendment	Effective Date	Action
Amendment No.7 to FEMA-4273-DR-WV	August 29, 2016	Appoints William C. Watrel as FCO

# Open Field Offices as of August 30, 2016



# FEMA Readiness - Deployable Teams & Assets



Resource	Status	Total	FMC Available		Partially Available	Not Available	Detailed, Deployed, Activated	Comments	Rating Criterion
FCO	Yellow	36	8	22%	0	2	26		OFDC Readiness: FCO Green Yellow Red Type 1 3+ 2 1 Type 2 4+ 3 2 Type 3 4+ 3 2
FDRC	Red	10	1	10%	0	3	6		FDRC 3 2 1
US&R	Green	28	27	96%	1	0	0	NJ-TF1: Partially Mission Capable	<ul style="list-style-type: none"> <li>Green = Available / FMC</li> <li>Yellow = Available / PMC</li> <li>Red = Out-of-Service</li> <li>Blue = Assigned / Deployed</li> </ul>
National IMAT	Yellow	3	2	66%	0	0	1	East 2 deployed to LA (DR-4277) East 1 & West deployed Aug 28-Sep 2 to AL (Exercise)	<ul style="list-style-type: none"> <li>Green: 3 available</li> <li>Yellow: 1-2 available</li> <li>Red: 0 avail (<i>Individual N-IMAT red if 50% of Section Chiefs and / or Team Leader is unavailable for deployment.</i>)</li> </ul>
Regional IMAT	Yellow	13	5	38%	2	0	6	Region VI Team 1 reconstituting Region III reconstituting <b>Deployed:</b> Region II to LA (DR-4277) Region V to WI (DR-4276) Region VI Team 2 to LA (DR-4277) Region VIII to LA (DR-4277) Region IX Team-1 deployed HI for Madeline Region X to LA (DR-4277)	<ul style="list-style-type: none"> <li>Green: &gt;6 teams available</li> <li>Yellow: 4 - 6 teams available</li> <li>Red: &lt; 4 teams available</li> </ul> <i>R-IMAT also red if TL Ops / Log Chief is unavailable &amp; has no qualified replacement</i>
MERS	Green	18	16	89%	0	0	2	<b>Assets are supporting:</b> PR (Zika UCG) LA (DR-4277) HI (Madeline) AL (Training) MS (DR-4268)	<ul style="list-style-type: none"> <li>Green = &gt;66% available</li> <li>Yellow = 33% to 66% available</li> <li>Red = &lt;33% available</li> </ul>

# MERS Availability Summary



## MERS Availability Summary

as of 8/30/2016

Legend	> 66%	< 66% & > 33%	< 33%
	Personnel Availability	Equipment Availability	% Deployed
Bothell MERS	87%	100%	6%
Denton MERS	47%	69%	45%
Denver MERS	78%	87%	20%
Frederick MERS	79%	100%	15%
Maynard MERS	78%	100%	0%
Thomasville MERS	63%	100%	33%
<i>Disaster Emergency Communications Division</i>			
Overall MERS Availability	69%	93%	22%

# FEMA Readiness - National & Regional Teams



Resource	Status	Total	FMC Available		Partially Available	Not Available	Status	Comments	Rating Criteria
NWC	Green	5	5	100%	0	0	Not Activated		<ul style="list-style-type: none"> <li>• Green = FMC</li> <li>• Yellow = PMC</li> <li>• Red = NMC</li> </ul>
NRCC	Green	2	2	100%	0	0	Not Activated		
HLT	Green	1	1	100%	0	0	Activated		
DEST	Green						Not Activated		
RRCCs	Green	10	10	100%	0	0	Not Activated	Region IX at Level III at 9 am PDT	
RWCs/MOCs	Green	10	10	100%	0	0	Not Activated	Region IX at Enhanced Watch	





# FEMA

**FEMA's mission is to support our citizens and first responders to ensure that as a nation we work together to build, sustain, and improve our capability to prepare for, protect against, respond to, recover from, and mitigate all hazards.**