



# FEMA

## Daily Operations Briefing

Wednesday, July 24, 2013

As of 8:30 a.m. EDT

# Significant Activity: July 23 - 24



## **Significant Events:**

- Oil platform well blowout & fire, Gulf of Mexico (Hercules Platform No. 265)
- Severe Weather Outbreak Midwest to East Coast

## **Tropical Activity:**

- Atlantic – Tropical Depression Four
- Eastern Pacific – Area 1 (Medium 50%)
- Central Pacific – No tropical storms expected through Thursday evening
- Western Pacific – No activity threatening U.S. territories

## **Significant Weather:**

- Showers & thunderstorms – Central Great Basin to Central U.S.; Southeast to Northeast
- Monsoonal moisture continues – Southwestern United States
- Flash Flooding – Southwest to High Plains; Southern Plains
- Critical Fire Weather – None; Red Flag Warnings: OR, CA, ID & UT
- Space Weather: No space weather storms observed/predicted

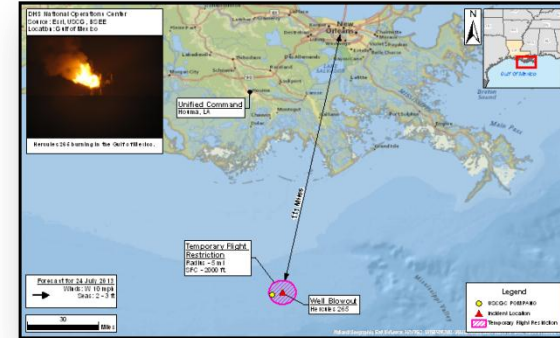
**Earthquake Activity:** None

**Declaration Activity:** Major Disaster Declaration request – South Dakota

# Gulf of Mexico

## Hercules Platform No. 265

- Oil production platform experienced a well blowout Tuesday morning
- Located 40 miles SW of Grand Isle, LA
- Unified Command established in Houma, LA
- 44 workers were safely evacuated; no injuries / fatalities in either blowout or evacuation
- USCG reported a light sheen  $\frac{1}{2}$  mile long & 50 ft. wide around platform; now dissipating
- Assessment team boarded platform; unable to complete assessment due to presence of natural gas
- At 11:53 p.m. EDT Tuesday; released natural gas exploded & is burning off
- Temporary Flight Restriction (TFR) remains in effect 5 miles around platform & up to 2,000 feet
- No national critical infrastructure is threatened or at risk



# Severe Weather Activity – July 23-24



## Overview:

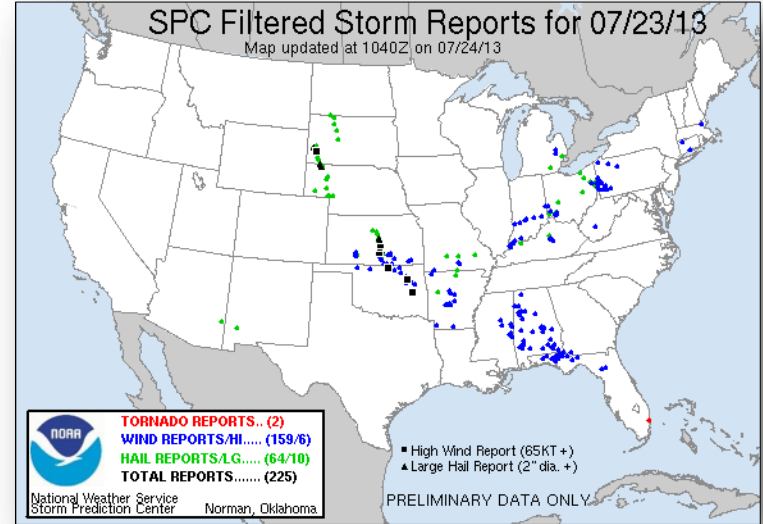
- Strong winds, large hail, heavy rains & possible tornadoes reported from Midwest to East Coast

## Impacts:

- No significant impacts; minor property damage reported
- No fatalities or injuries
- Impacts primarily downed trees & power lines
- Over 120,000 customers without power across affected area:
- Majority of outages concentrated in 3 states:
  - OK (110,000), IL (1,508), KS (7,856)

## Response:

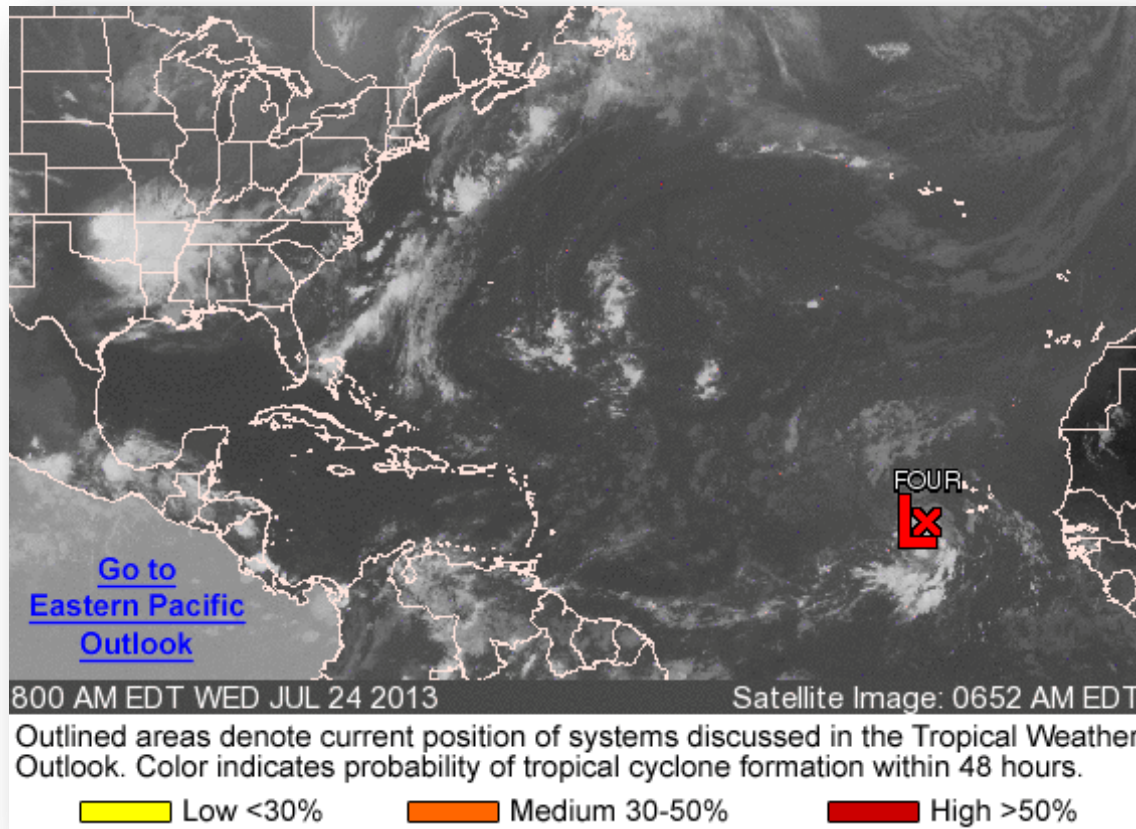
- All State EOCs remain at Normal Operations; all affected FEMA Regions remain at Watch/Steady State
- No unmet needs, no requests for FEMA assistance



# Atlantic – Tropical Outlook



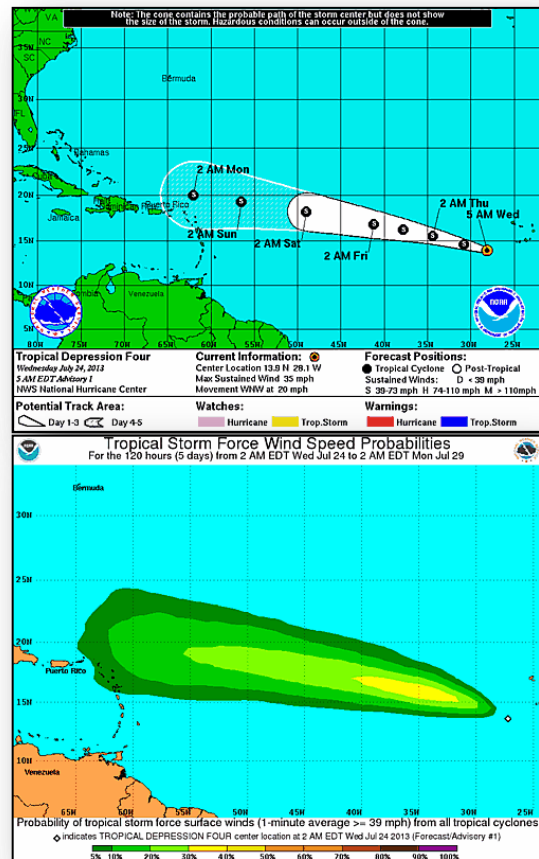
FEMA



# Atlantic – Tropical Depression Four

## As of 5:00 a.m. EDT

- Located 310 miles WSW of the Cape Verde Islands
- Moving toward the WNW at 20 mph
- Maximum sustained winds are 35 mph
- Forecast to continue WNW the next couple of days
- Some slight strengthening expected during the next 48 hours
- Expected to become a Tropical Storm later today or tonight

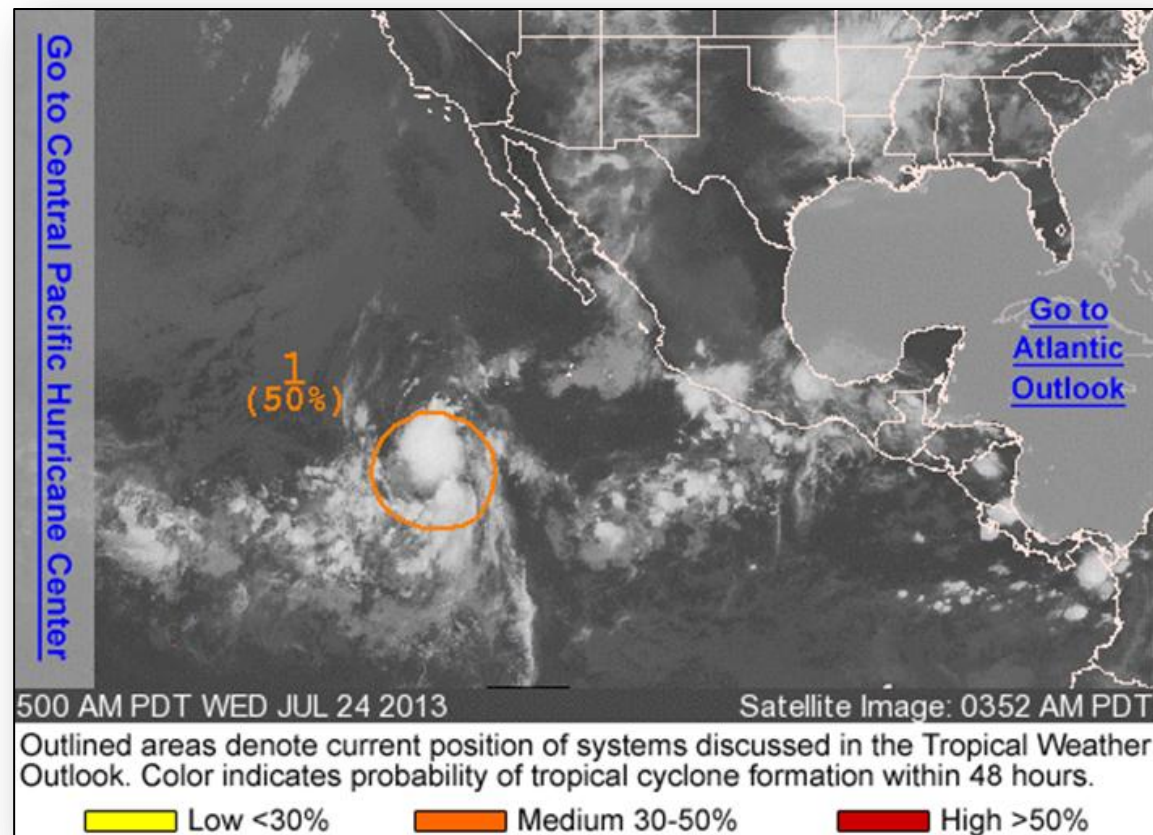




# Eastern Pacific – Tropical Outlook



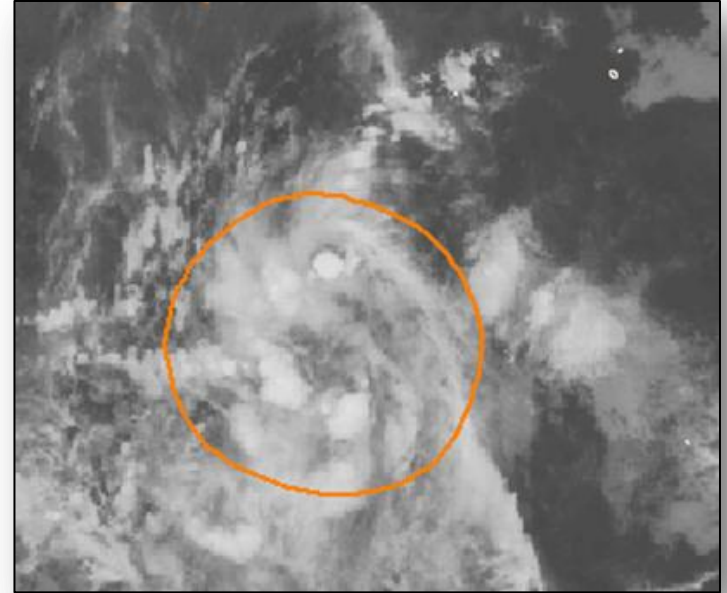
FEMA



# Eastern Pacific – Area 1 (Invest 98E)

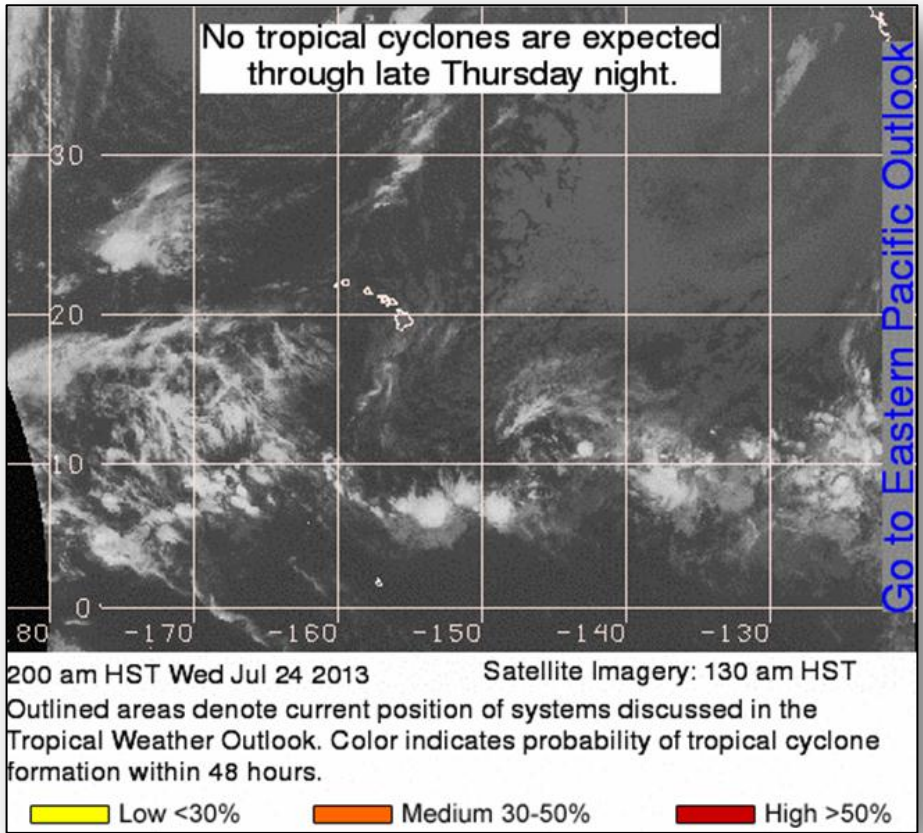
## As of 8:00 a.m. EDT

- Cloudiness & showers associated with an elongated area of low pressure remain disorganized
- Centered 900 miles SW of southern tip of Baja California Peninsula
- Moving generally westward at about 15 mph
- Could become a tropical depression during the next day or so
- Medium chance (50%) of becoming a tropical cyclone during next 48 hours

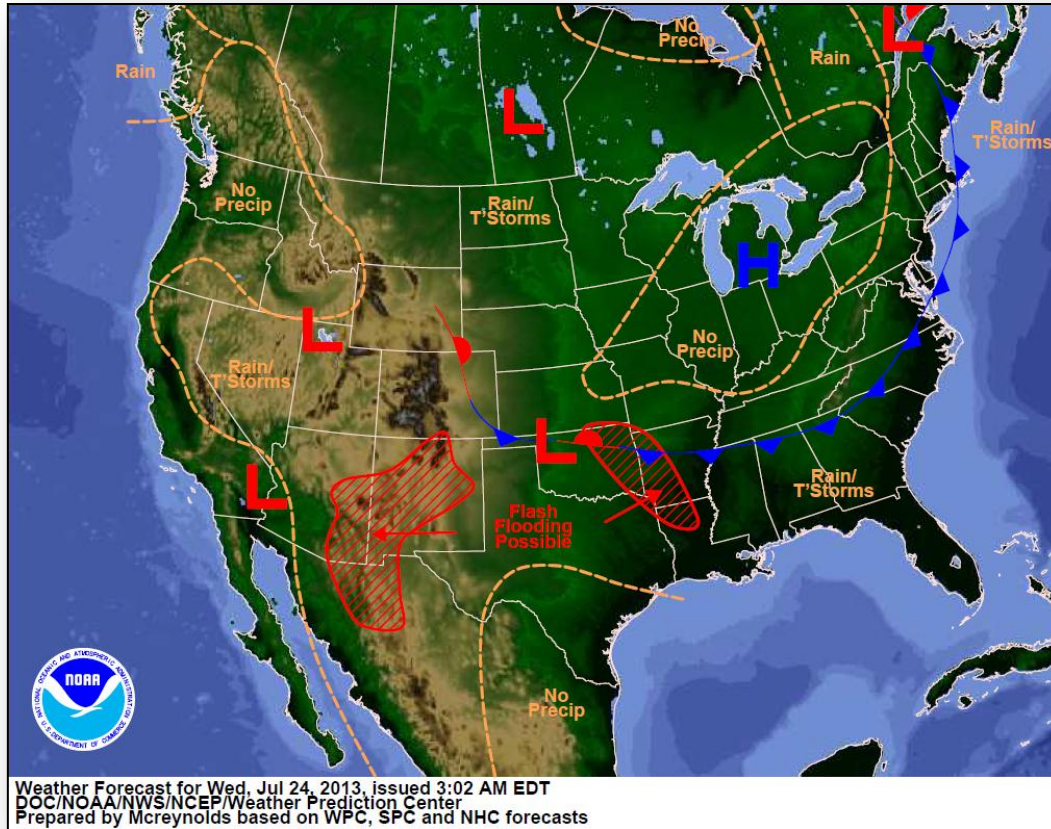




# Central Pacific – Tropical Outlook



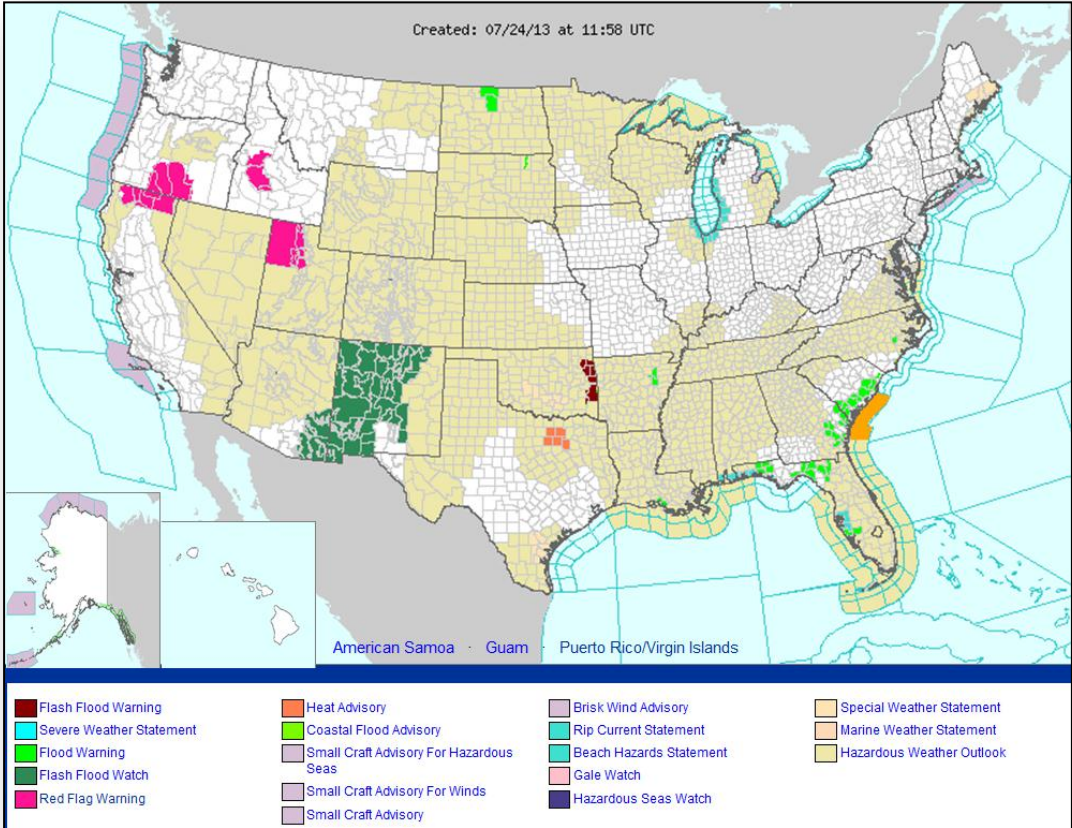
# National Weather Forecast



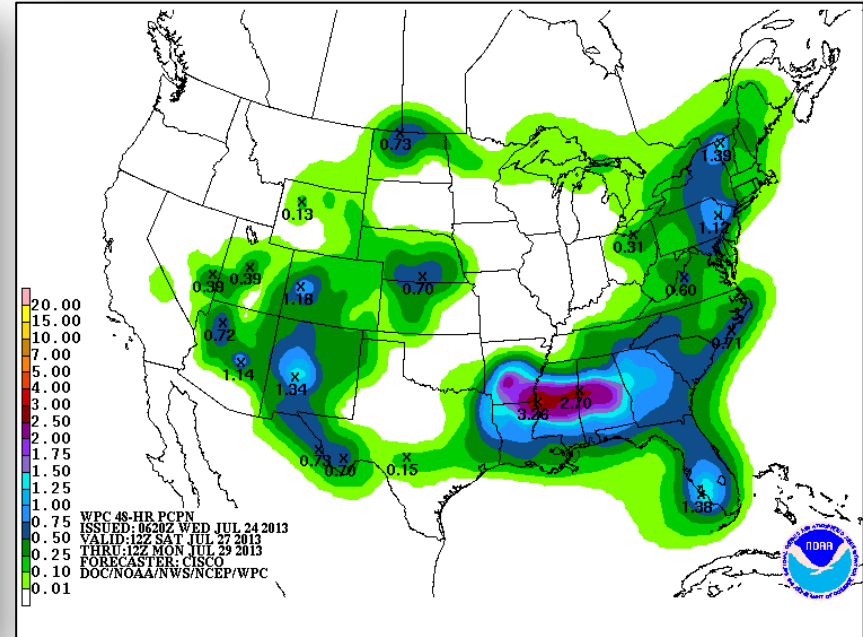
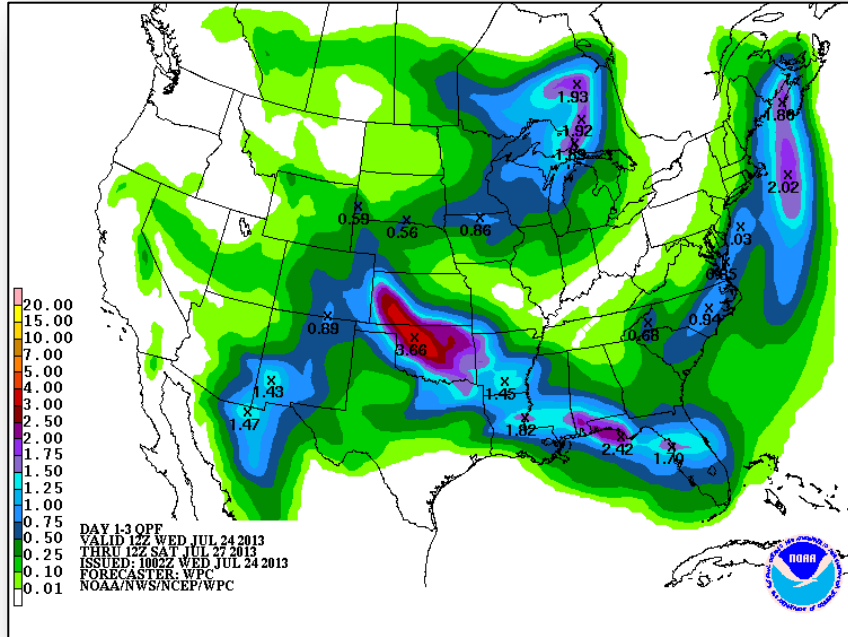
# Active Watches/Warnings



FEMA



# Precipitation Forecast Days 1-3 & 4-5

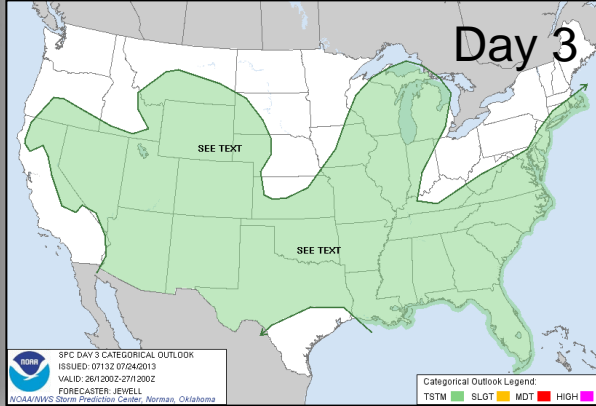
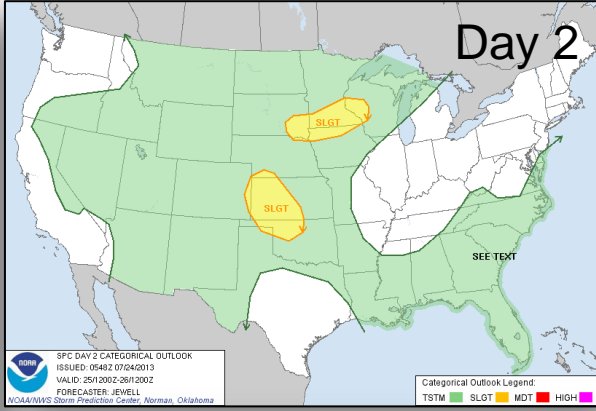
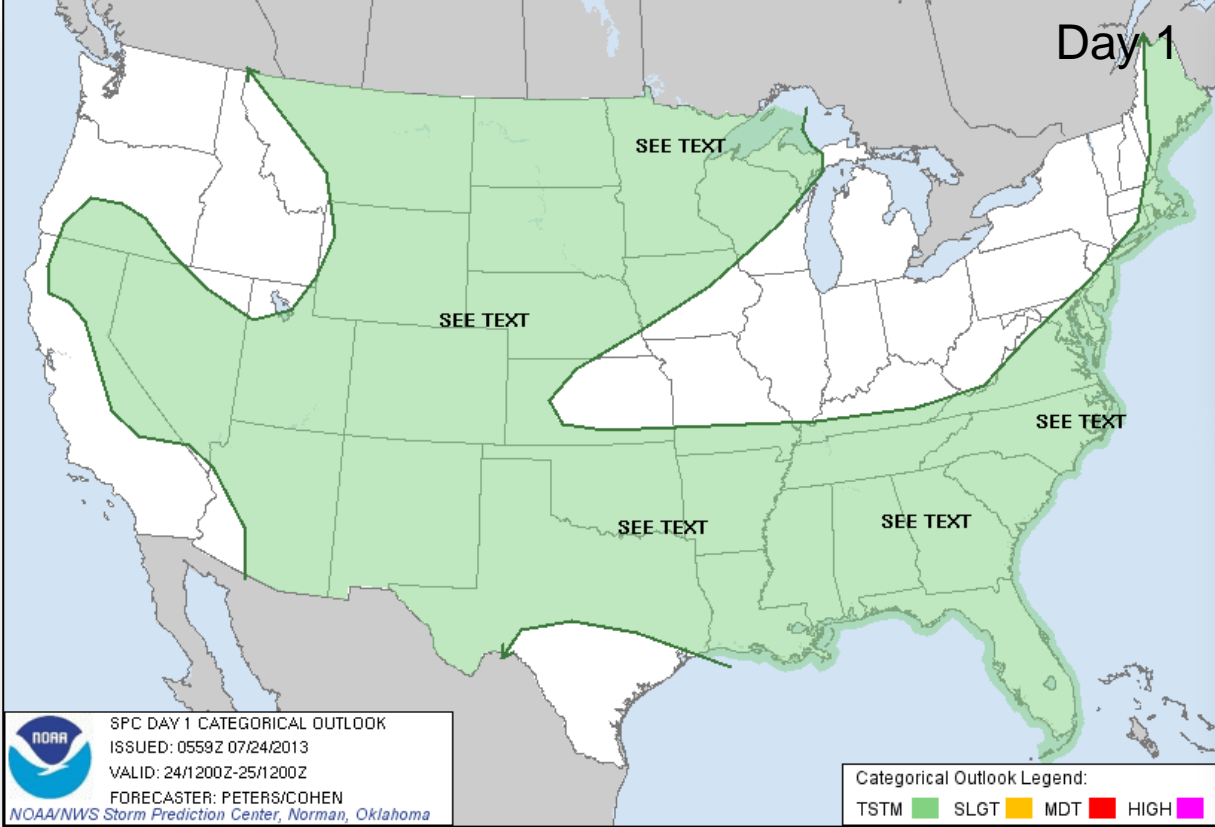




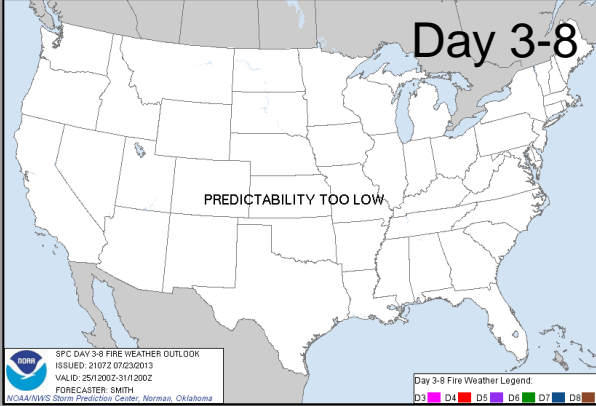
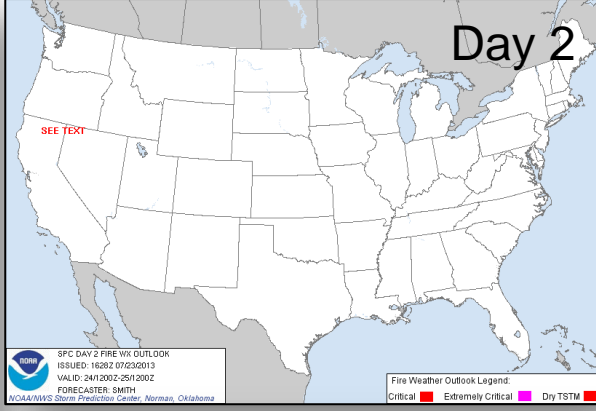
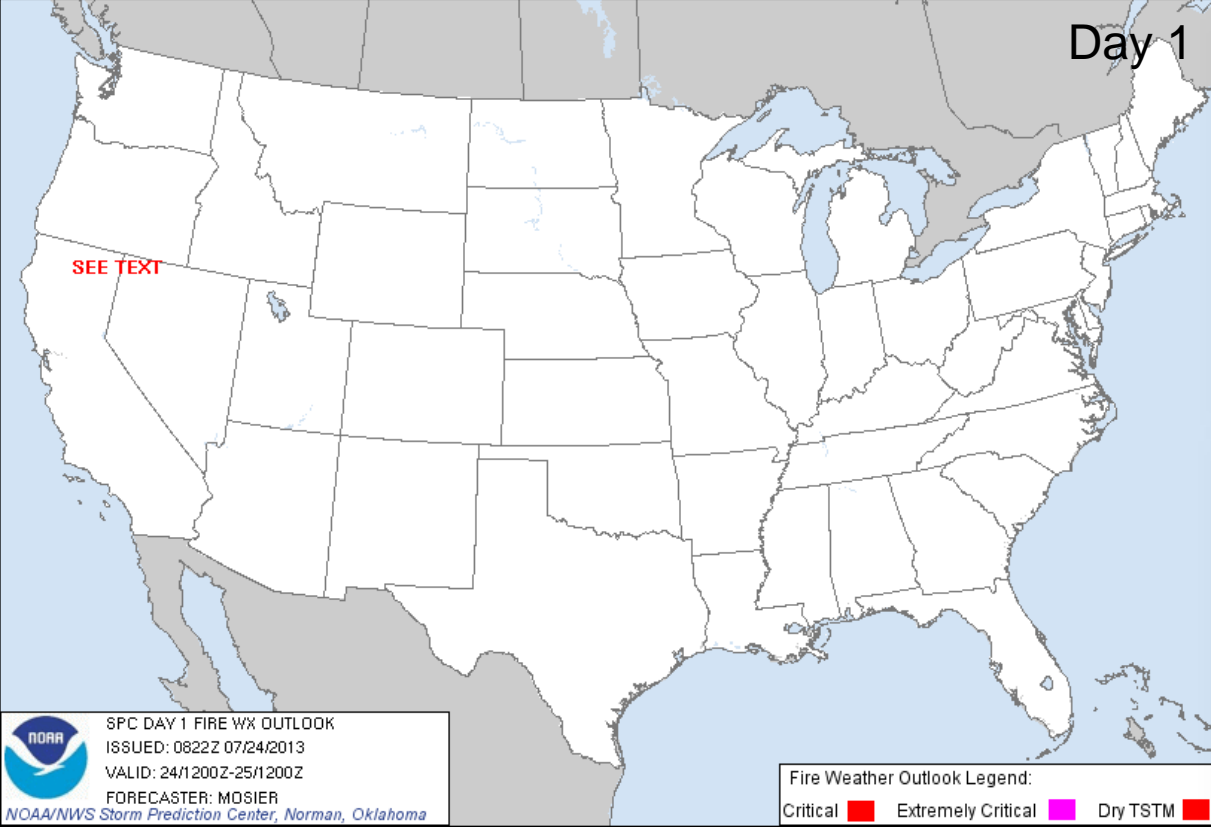
# River Forecast – 7 Day



# Convective Outlooks Days 1 – 3

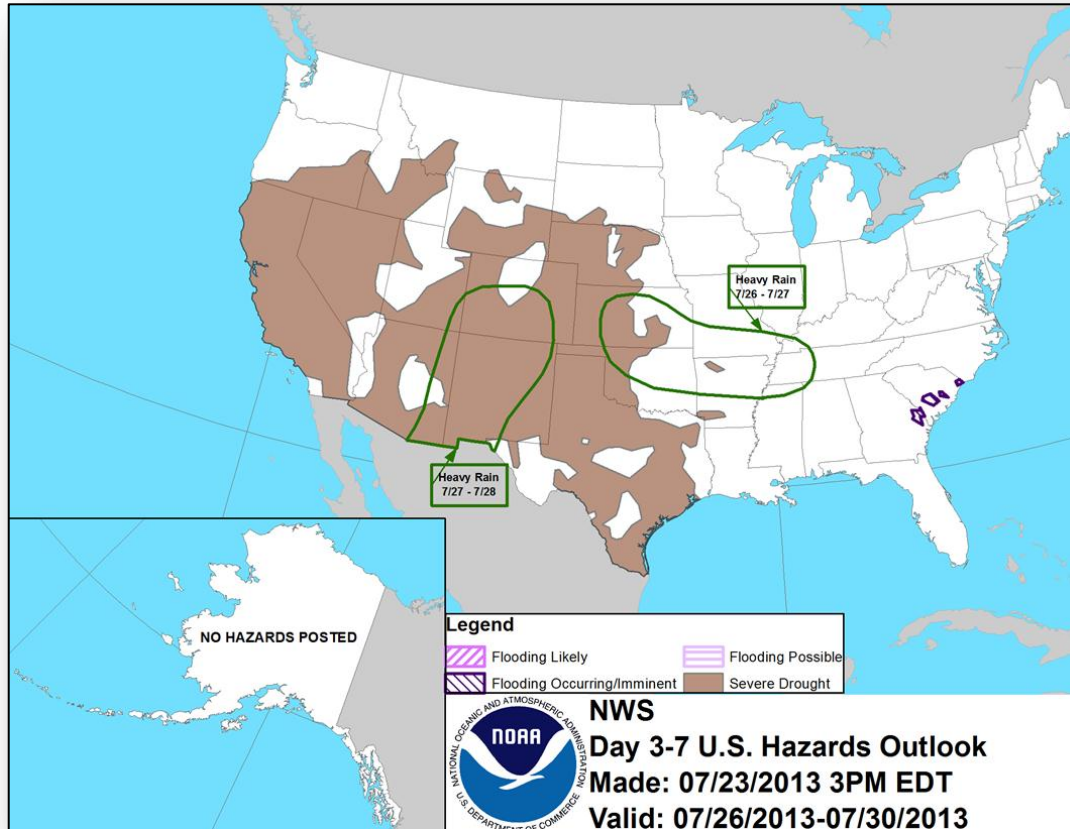


# Critical Fire Weather Areas Days 1 – 8





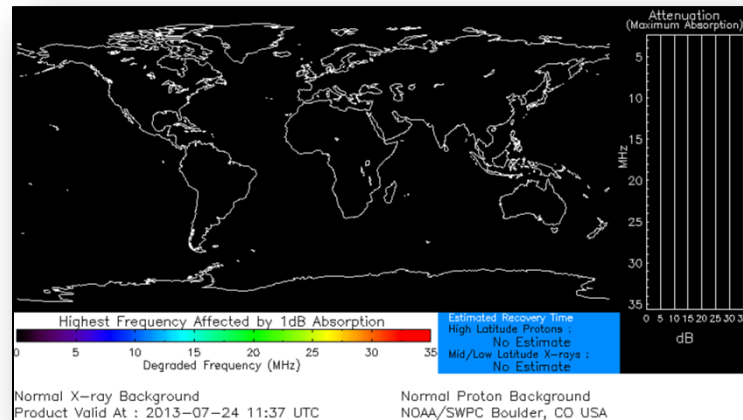
# Hazard Outlook: July 26 – 30



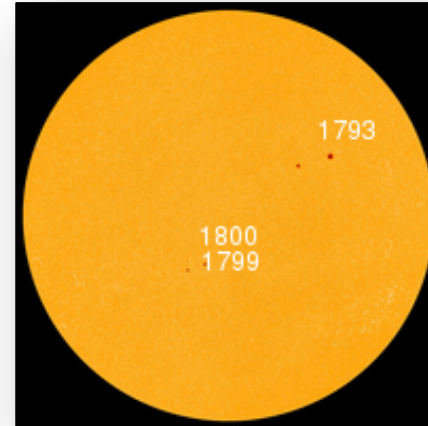
# Space Weather

NOAA Scales Activity Range 1 (minor) to 5 (extreme)	Past 24 Hours	Current	Next 24 Hours
Space Weather Activity:	None	None	None
• Geomagnetic Storms	None	None	None
• Solar Radiation Storms	None	None	None
• Radio Blackouts	None	None	None

## HF Communication Impact



## Sunspot Activity



# North American Monsoon

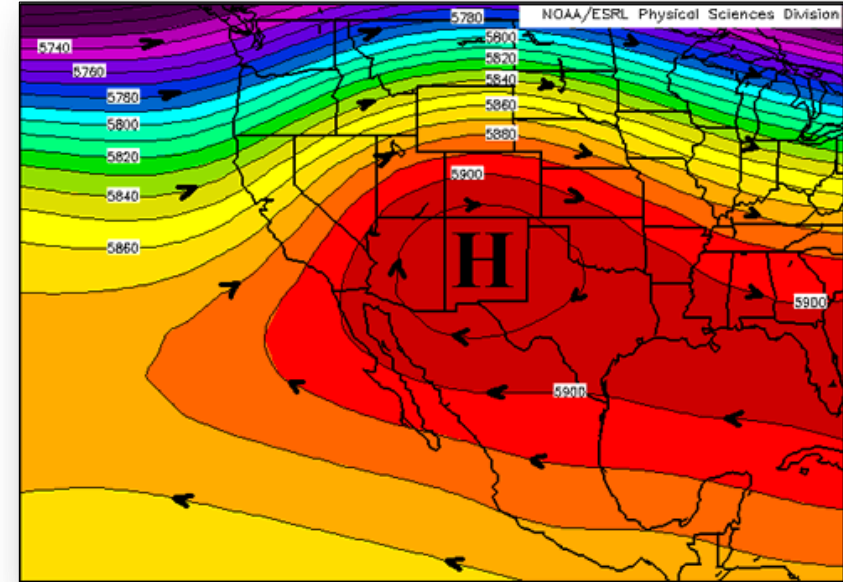
**Myth:** The monsoon is an individual thunderstorm

**Definition:**

- Monsoon is a large scale weather pattern which causes summer thunderstorms to develop

**Monsoon Season:** June 15 – September 30

- Wind patterns shift, reversing flow from dry land to moist ocean areas
- Moisture transported mainly from the Gulf of California, eastern Pacific & Gulf of Mexico
- Leads to a distinct rainy season over a large portion of western North America - develops fairly quickly & sometimes dramatically
- Southwest U.S. is at the northern fringe of the monsoon



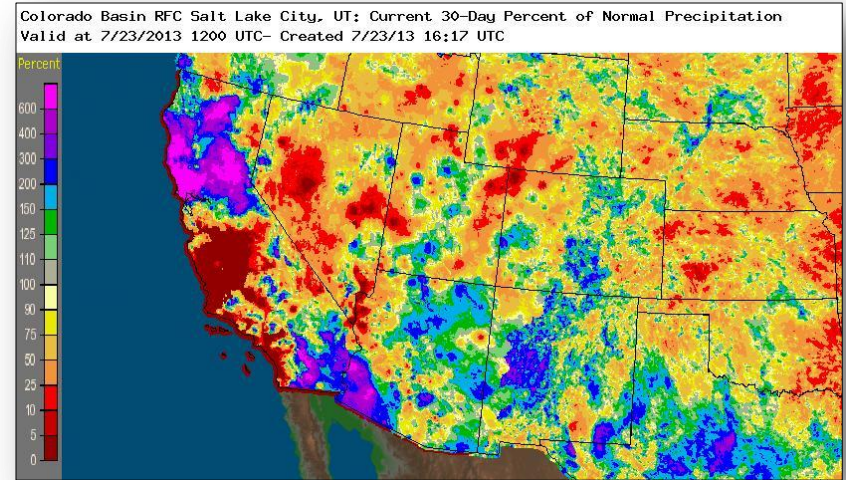
# North American Monsoon

## Rainfall during a monsoon is not continuous:

- Varies considerably & usually comes in distinct “burst” periods of heavy rainfall & “break” periods with little or no precipitation
- Monsoon accounts for substantial portion (over 50 percent) of annual precipitation in northwest Mexico & southwest U.S.

## Weather Hazards:

- Deadly lightning, damaging straight-line winds (can exceed 100 mph), dust storms, flash flooding (especially at low water crossings), & brief tornadoes
- Large hail (mainly in the higher terrain) & excessive heat (increased humidity combined with hot temperatures)

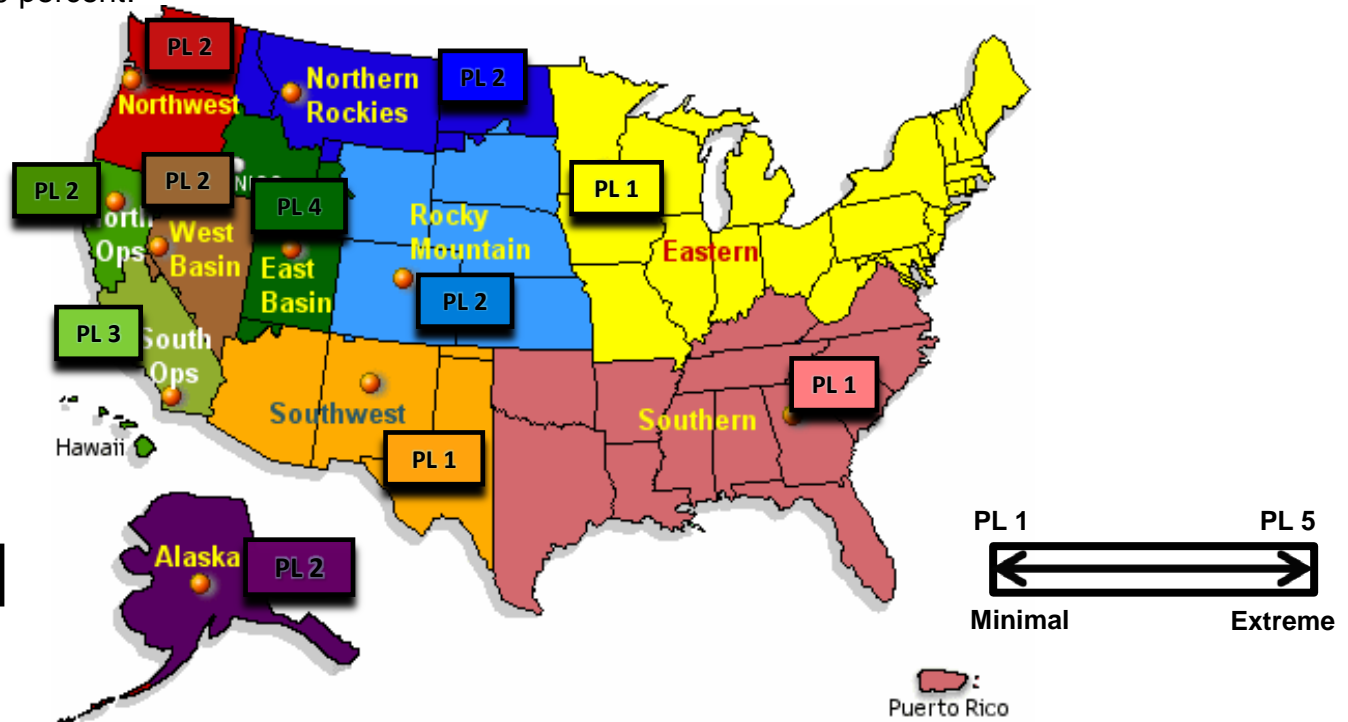


# U.S. Wildland Fire Preparedness Levels



## National Preparedness Level: 3

Description: Two or more Geographic Areas are experiencing wildland or prescribed fire activities requiring a major commitment of national resources. Additional resources are being ordered & mobilized through the National Interagency Coordination Center (NICC). Type 1 & Type 2 Incident Management Teams (IMT) are committed in two or more Geographic Areas & crew commitment nationally is at 50 percent.

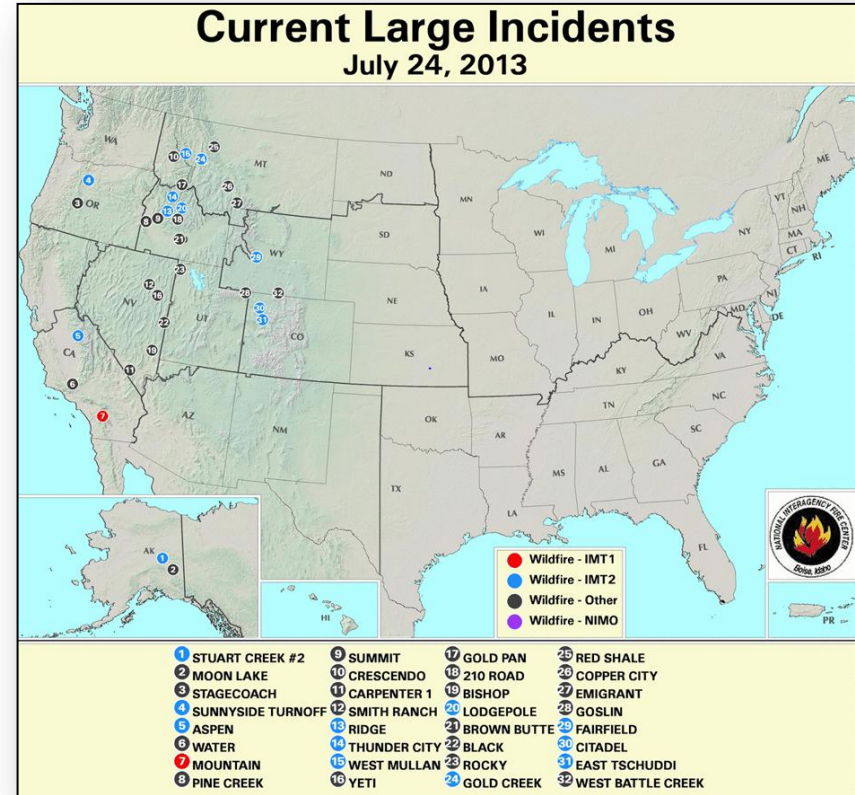


As of July 24, 2013

# National Fire Activity

## As of July 24, 2013:

- National Preparedness Level: 3
- Initial Attack Activity: Light (131 new fires)
- New Large Fires: 6
- Large Fires Contained: 5
- Uncontained Large Fires: 23
- Area Command Teams committed: 0
- NIMOs committed: 0
- Type 1 IMT(s) Committed: 1
- Type 2 IMT(s) Committed: 10
- States; ID, UT, MT, & WY, CO, OR, CA, &, NV, AK





# Wildfire Summary



Fire Name (County)	FMAG #	Acres burned	% Contained Est. Containment date	Evacuations (Residents)	Structures Threatened	Structures Destroyed	Fatalities / Injuries
<b>Montana (1)</b>							
West Mullan Fire (Mineral County)	FEMA-5035-FM-MT Approved July 18	6,300 (+210)	60% (+15)	Mandatory	42 (-16)	0	0/1
<b>Oregon (1)</b>							
Sunnyside Turnoff Fire (Warm Springs Indian Reservation)	Not Requested	22,320 (+2,320)	40% (+20)	Mandatory	102 (-27)	0	0/1

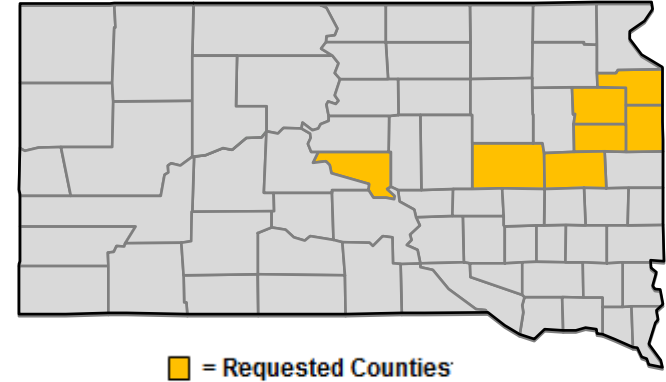


# Major Disaster Declaration Request – SD



**July 23, 2013**

- Governor requested a Major Disaster Declaration
- For severe storms, flooding, tornadoes & strong straight-line winds from June 19 to June 29, 2013
- Requesting:
  - PA for 7 counties
  - Hazard Mitigation statewide



# Disaster Requests & Declarations



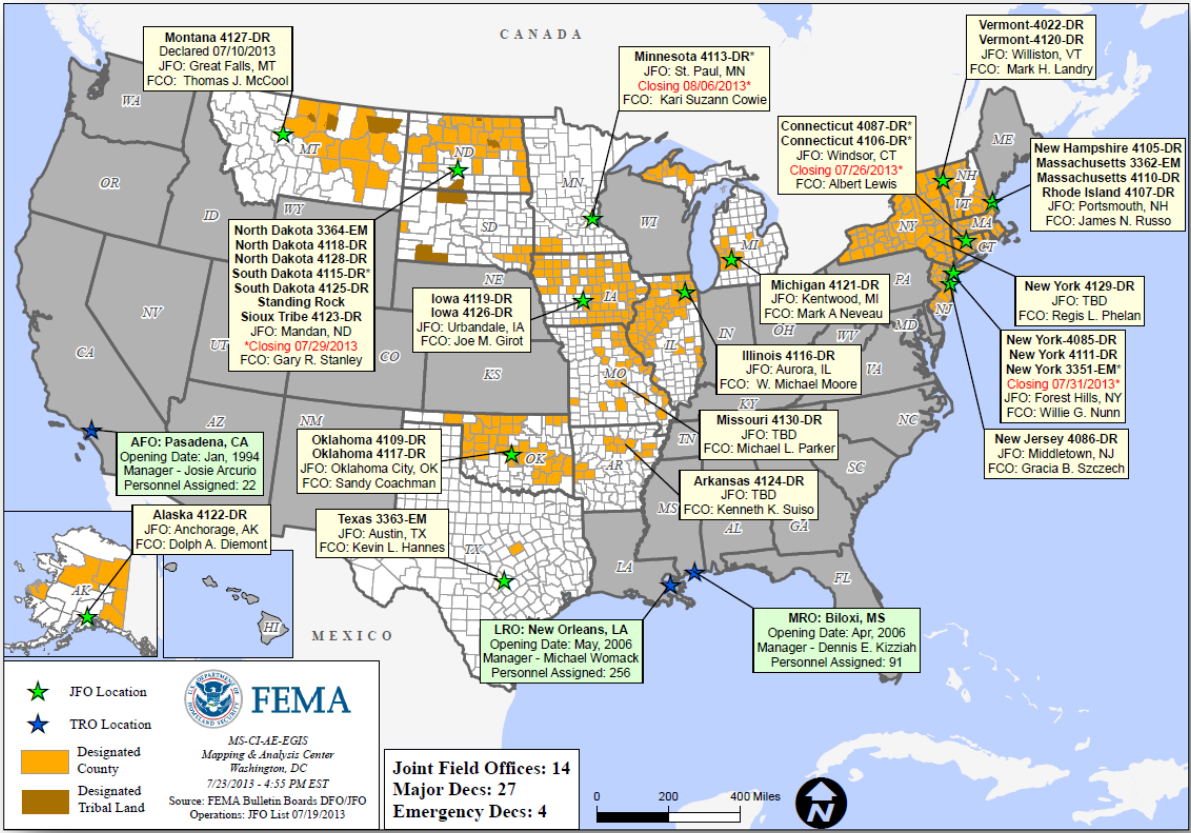
Declaration Requests in Process		Requests APPROVED (since last report)	Requests DENIED (since last report)
10	Date Requested	0	0
CO – DR Black Forest Fire	July 8, 2013		
CO – DR Royal Gorge Fire	July 8, 2013		
WV – DR Severe Storms, Flooding, Landslides, & Mudslides	July 9, 2013		
TX – DR (Appeal) Explosion	July 9, 2013		
AZ – DR Yarnell Hill Fire	July 12, 2013		
San Carlos Apache Tribe – DR Power Outage	July 12, 2013		
NH – DR Severe Storm & Flooding	July 15, 2013		
MN – DR Severe Storms, Straight-line Winds, & Flooding	July 17, 2013		
IA – DR Severe Storms, Tornadoes, & Flooding	July 18, 2013		
SD – DR Severe Storms, Tornadoes, & Flooding	July 23, 2013		

# Joint Preliminary Damage Assessments



Region	State / Location	Event	IA/PA	Number of Counties		Start – End
				Requested	Complete	
III	PA	Severe Storms & Flooding June 27, 2013	IA	3	1	7/11 - TBD
			PA	5	3	7/11 - TBD
X	AZ	Yarnell Fire Burn Scar Assessment	PA	1	0	7/23 – TBD

# Open Field Offices as of July 24, 2013



# OFDC Cadre Member Status

## Federal Coordinating Officer

Deployed	Detailed	Available	Not Available	Total
26	2	8	3	39
Total Available	Type 1	Type 2	Type 3	Type 4
10*	2	4	2	2

\* All Type 1 FCOs are available unless deployed to a Level 1 event

## Federal Disaster Recovery Coordinator

Deployed	Available	Pending Hire	On Board	Positions
6	3	1	9	10

As of: 07/19/2013

# MCOV Fleet / Deployment Status



MCOV FLEET STATUS						MCOV DISASTER SUPPORT DEPLOYMENTS					
Location	Units Assigned	Available FMC	Deployed Committed	PMC	Unavailable	DR-State	OPCON	En Route	Unit Prep	Open Request	Notes:
MERS Maynard	3	2			1						
MERS Frederick	8	8									
MERS Thomasville	14	13			1						
DC Ft Worth	20	18			2						
MERS Denver	2	2									
MERS Bothell	4	3			1						
Sacramento	4	4									
<b>TOTAL</b>	<b>55</b>	<b>50</b>	<b>0</b>	<b>0</b>	<b>5</b>	<b>TOTAL</b>	<b>0</b>	<b>0</b>	<b>0</b>	<b>0</b>	
Included in above totals, units in route for turn-in.											

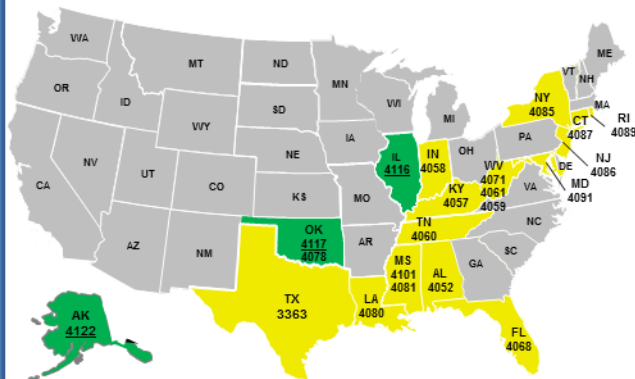
Fully Mission Capable	50
Partially Mission Capable	0
Non-Mission Capable	5
<b>Total Not Deployed</b>	<b>55</b>

Data as of: 07/23/13 @ 1500

# Active IA Disasters - Referral Status & Awards



## Active IA Disasters



**Legend**

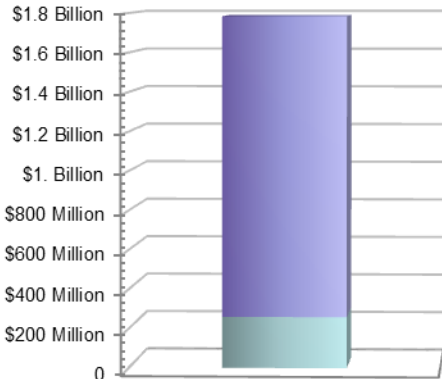
**# of DRs**

- 3** Open Registration Period (60 days from Declaration, unless extended)
- 18** IHP Active – IHP Assistance period remains open (18 Months from Declaration)

## Total IHP Awards

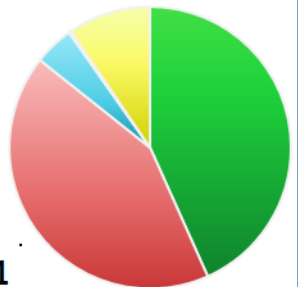
**Total Awards:**  
308,615

**Total Max Grants:**  
7,501



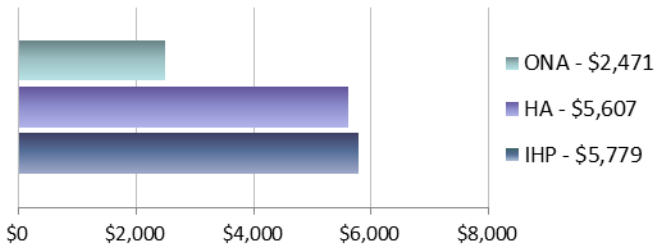
## IHP Referral Status

- Approved - 308,615
- Ineligible - 302,134
- Withdrawn - 32,327
- Pending (FEMA) - 1,839
- Pending (Applicant) - 67,826



**Total Referrals - 712,741**

## Average IHP Awards



**21 Total IHP Active Disasters** (All information on this slide reflects data for these disasters)

# Max Grants = Applicants awarded maximum IHP (\$31,900 as of FY 2013)

Data as of: 07/23/13 @ 1500



# IA Registration Statistics



## IA Registrations and IHP Amounts as of July 23, 2013 @ 1500

DR/EM # - State	Registrations	Approved Applicants	Total HA Approved	Total ONA Approved	Total IHP Approved
4116 - IL	90,281	57,958	\$122,536,176	\$19,732,122	\$142,268,299
4117 - OK	14,742	3,337	\$9,122,066	\$3,901,540	\$13,023,606
4122 - AK	322	165	\$517,063	\$817,771	\$1,334,834
<b>Totals</b>	<b>105,345</b>	<b>61,460</b>	<b>\$132,175,305</b>	<b>\$24,451,434</b>	<b>\$156,626,738</b>
24 hour change	+578	+285	+\$653,795	+\$236,357	+\$890,152

## NPSC Call Data for July 22, 2013

Total Calls Answered (Help Line + Registration Intake)	4,086
Average time to answer call	12 seconds
Maximum / Minimum time to answer a call	15 seconds / 10 seconds

# Housing Inspection Statistics



## Inspection Data as of July 23, 2013 @ 1500


DR # - State	Inspectors	Inspections Assigned	Inspections Completed	Inspection % Complete	Turnaround Time (Days)
4116 - IL	53	85,912	84,746	98.64%	1.7
4117 - OK	9	7,813	7,688	98.40%	1.9
4122 - AK	0	310	295	95.16%	2.8
<b>TOTAL</b>	<b>62</b>	<b>94,035</b>	<b>92,729</b>	<b>98.61%</b>	<b>1.7</b>
24 hour change	+2	+604	+369	-0.24%	0.0


# FEMA Workforce Status Report




Workforce Type	Total	Available To Deploy	Deployed	Committed To Other Activities or Exempt from Deployment	Operational Readiness
Reservist	6,385	3,320 (53%)	2,325 (35%)	740 (12%)	Mission Capable
Cadre of On-Call Response Employees (CORE)	2,567	990 (40%)	1,566 (60%)	11 (0%)	Mission Capable
Permanent Full Time (PFT)	4,996	2,500 (50%)	479 (10%)	*2,017 (40%)	Mission Capable
FEMA Corps	309	0 (0%)	309 (100%)	0 (0%)	Deployed
DHS Surge Capacity Force	3,849	1,660 (40%)	0 (0%)	** 2,189 (60%)	Awaiting DHS/FEMA Activation
<b>Workforce Totals</b>	18,106	8,470 (47%)	4,679 (26%)	4,957 (27%)	

 = <70% Deployed/Mission Capable

 = 70% - 79% Deployed/Partially Mission Capable

 = >80% Deployed

 = >80% Committed to Other Activities-Awaiting DHS/FEMA Activation

\*This number will continue to be refined as Directorates/Regions identify and solidify the number of personnel required to support "mission critical home station", and Emergency Relocation Group personnel

\*\*Deployable based on FEMA's need for DHS activation

Employees may be committed to other activities or exempt from deployment based on: leave status, training, travel related issues, or personnel status as ERG or mission critical home station employee

Data as of 7/21/13

# IMAT Status



National Teams					
Team	Status	Team	Status	Team	Status
Blue/White	Available/Mission Capable	East	Available/Partially Mission Capable	West	Available/Partially Mission Capable
Regional Teams					
Team	Status	Team	Status	Team	Status
Region I	Available/Mission Capable	Region V	Assigned/Deployed (IL)	Region VIII	Assigned/Deployed (ND/SD/SRST*)
Region II	Assigned/Deployed (NY)	Region VI-1	Assigned/Deployed (OK)	Region IX-1	Available/Mission Capable
Region III	Available/Mission Capable	Region VI-2	Assigned/Deployed (AR)	Region IX-2	Available/Partially Mission Capable
Region IV-1	Available/Mission Capable	Region VII	Available/Mission Capable	Region X	Not Mission Capable
Region IV-2	Available/Mission Capable	*SRST – Standing Rock Sioux Tribe			

= Available/Mission Capable     
  = Assigned/Deployed  
 = Available/Partially Mission Capable     
  = Not Mission Capable

# Urban Search & Rescue



INCIDENT SUPPORT TEAMS (Red-White-Blue) – Monthly On Call Rotation																	
JAN	FEB	MAR	APR	MAY	JUN	JUL	AUG	SEP	OCT	NOV	DEC						
WEST				CENTRAL				EAST									
Team		Status		Team		Status		Team		Status							
CA-TF1	Available	AZ-TF1	Available	FL-TF1	Available	CA-TF2	Available	FL-TF2	Available	CA-TF3	Available	IN-TF1	Available	MA-TF1	Available		
CA-TF4	Available	MO-TF1	Available	MD-TF1	Available	CA-TF5	Available	NE-TF1	Available	NY-TF1	Available	CA-TF6	Available	NM-TF1	Non-operational	PA-TF1	Conditionally Available
CA-TF7	Available	NV-TF1	Conditionally Available	VA-TF1	Available	CA-TF8	Available	TN-TF1	Available	VA-TF2	Available	WA-TF1	Available	TX-TF1	Available	OH-TF1	Available
		UT-TF1	Available														

= Available/Mission Capable  
 = Available/Partially Mission Capable

= Assigned/Deployed  
 = Out-of-Service

# RRCC / Regional Watch Center Status



Region	RRCC	Regional Watch Center
I	Watch/Steady State	Maynard MOC (24/7)
II	Watch/Steady State	24/7
III	Watch/Steady State	24/7
IV	Watch/Steady State	24/7
V	Watch/Steady State	24/7
VI	Watch/Steady State	Denton MOC (24/7)
VII	Watch/Steady State	24/7
VIII	Watch/Steady State	Denver MOC (24/7)
IX	Watch/Steady State	24/7
X	Watch/Steady State	Bothell MOC (24/7)

# National Team Status



Team/Status	Current Location	Remarks
National Watch Center	Washington, DC	Watch/Steady State
NRCC	Washington, DC	Not Activated
HLT	Miami, FL	Activated
DEST	Washington, DC	Not Activated
Mission Capable	Partially Mission Capable	Not Mission Capable



# FEMA

**FEMA's mission is to support our citizens and first responders to ensure that as a nation we work together to build, sustain, and improve our capability to prepare for, protect against, respond to, recover from, and mitigate all hazards.**