



# FEMA

## Daily Operations Briefing

August 27, 2012

As of 8:30 a.m. EDT

# Significant Activity: August 24-27

**Significant Events:** Tropical Storm Isaac

## **Tropical Activity:**

- Atlantic: Tropical Storm Isaac; Area 1 - (MEDIUM 30%), Area 2 - (LOW 10%)
- Eastern Pacific – Area 1 - (HIGH 60%)
- Central Pacific – No tropical cyclones expected through Tuesday evening
- Western Pacific – No significant activity

## **Significant Weather:**

- Slight risk of severe thunderstorm – Central/southern Florida
- Unsettled weather – Ohio Valley
- Critical Fire Weather Areas: none
- Red Flag Warnings: ID, MT, ND, SD, NE & WY
- Space Weather: No space weather storms occurred/predicted

**Earthquake Activity:** Southern California; Indonesia; Virgin Islands; offshore El Salvador

## **Disaster Declaration Activity:**

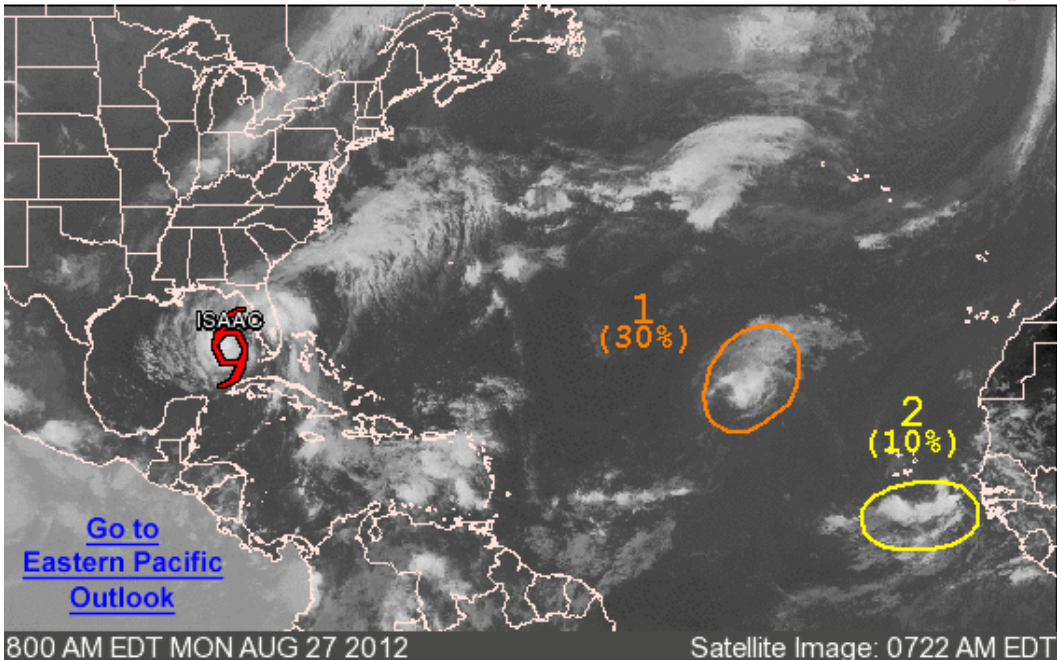
- LA Request for Emergency Declaration
- FEMA-4079-DR for New Mexico

# Atlantic – Tropical Outlook



## Graphical Tropical Weather Outlook

National Hurricane Center Miami, Florida



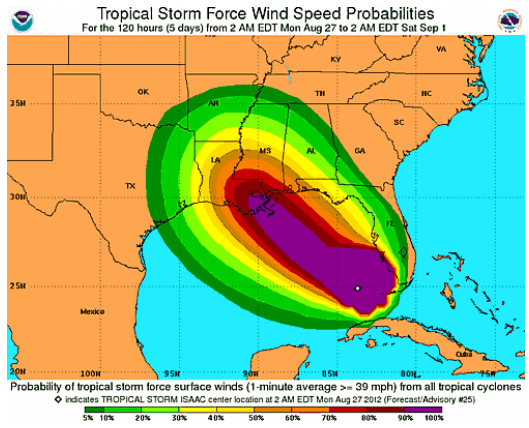
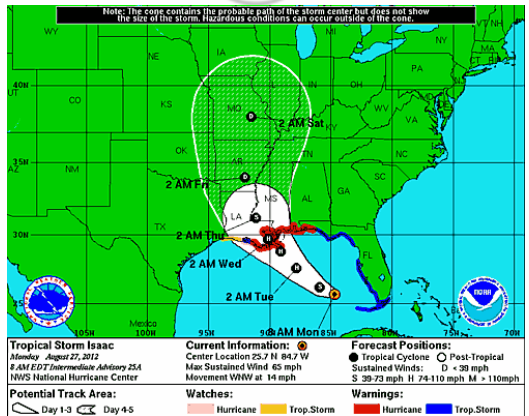
Outlined areas denote current position of systems discussed in the Tropical Weather Outlook. Color indicates probability of tropical cyclone formation within 48 hours.

Low <30%       Medium 30-50%       High >50%

# Atlantic – Tropical Storm Isaac

As of 8:00 a.m. EDT

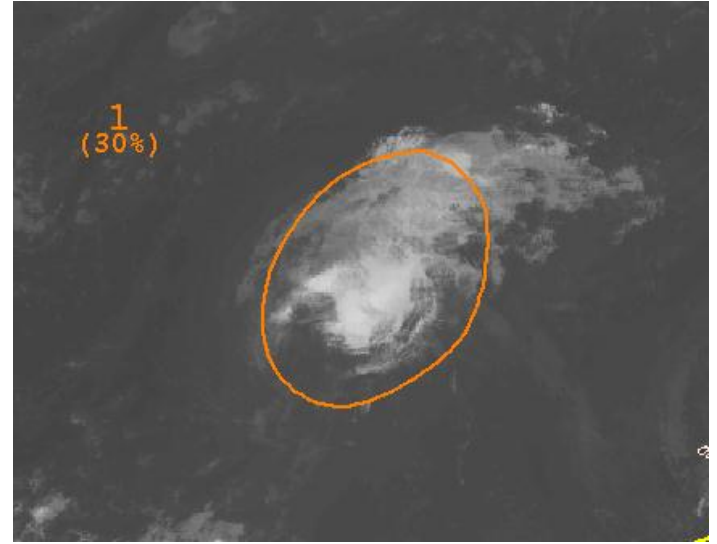
- 185 miles SW of Fort Meyers, FL
- 360 miles SE of the mouth of the Mississippi River
- Moving WNW at 14 mph
- Gradual turn toward WNW with a decrease in forward speed is expected in the next 48 hours
- A turn toward the NW is expected on Tuesday
- Max sustained winds 65 mph, with higher gusts
- Tropical storm-force winds extend 240 miles from center
- Some strengthening is forecast during the next 48 hours and Isaac is expected to become a hurricane in a day or two
- Tropical Storm Warning for Florida Keys (Dry Tortugas and Florida Bay); Hurricane Warning for northern Gulf of Mexico coast, east of Morgan City Louisiana and Destin Florida



# Atlantic – Area 1 (Invest 97L)

As of 8:00 p.m. EDT

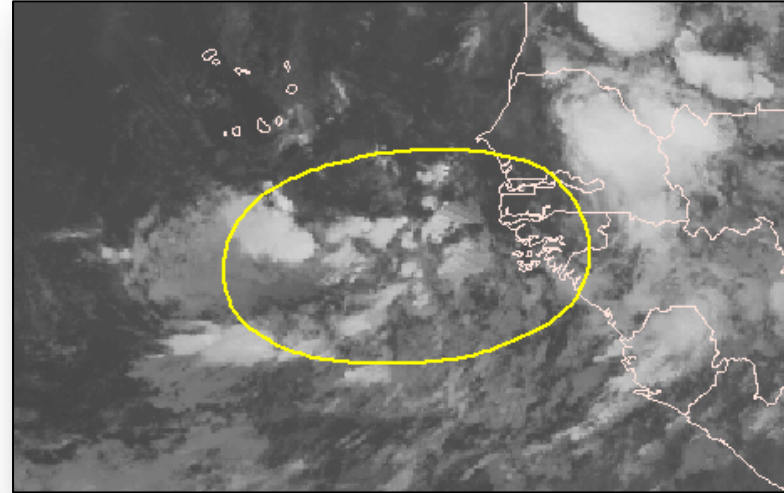
- Showers and thunderstorms remained disorganized in association with a broad area
- Located 1050 miles west of the Cape Verde Islands
- This system has the potential to become a tropical depression over the next couple of days
- Moving WNW to NW at 10 to 15 mph
- Medium (30%) chance, of becoming a tropical cyclone during the next 48 hours



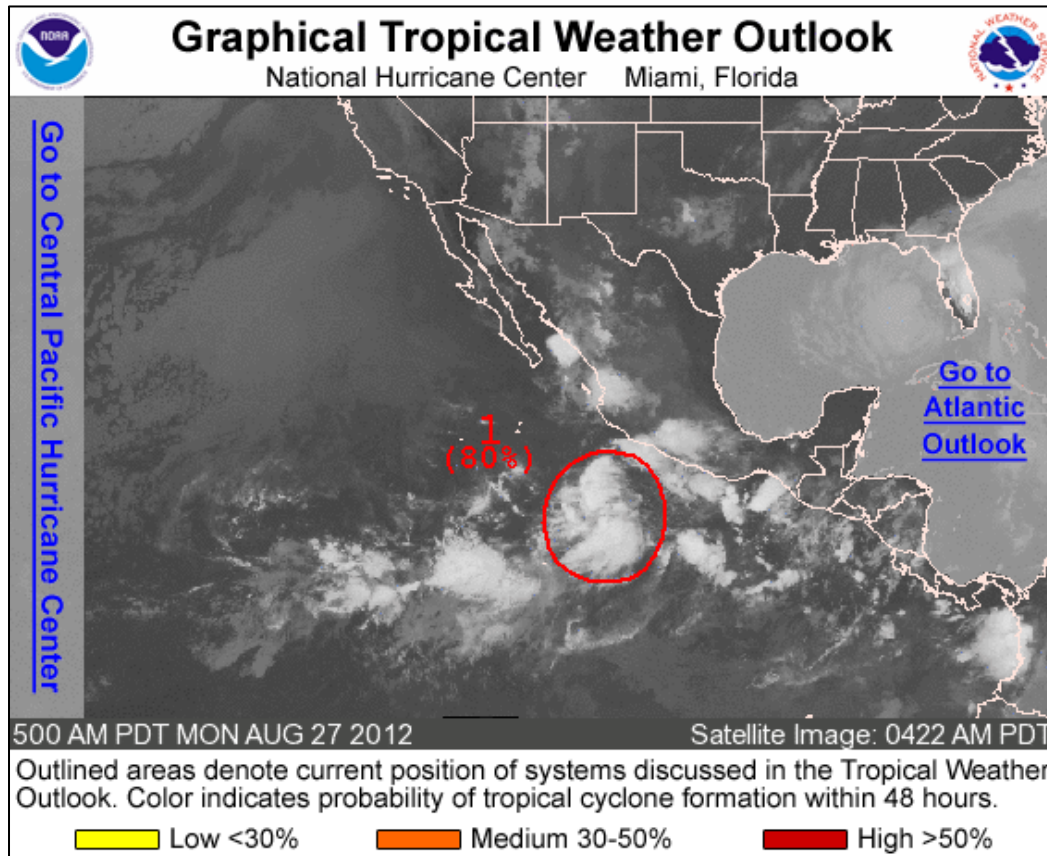
# Atlantic – Area 2

As of 8:00 a.m. EDT

- Disorganized showers and thunderstorms accompany a tropical wave moving off of the West Coast of Africa
- Environmental conditions are conducive for some gradual development of this disturbance during the next couple of days
- Moving WNW to W at 10 to 15 mph
- Low (10%) chance, of becoming a tropical cyclone during the next 48 hours



# Eastern Pacific – Tropical Outlook

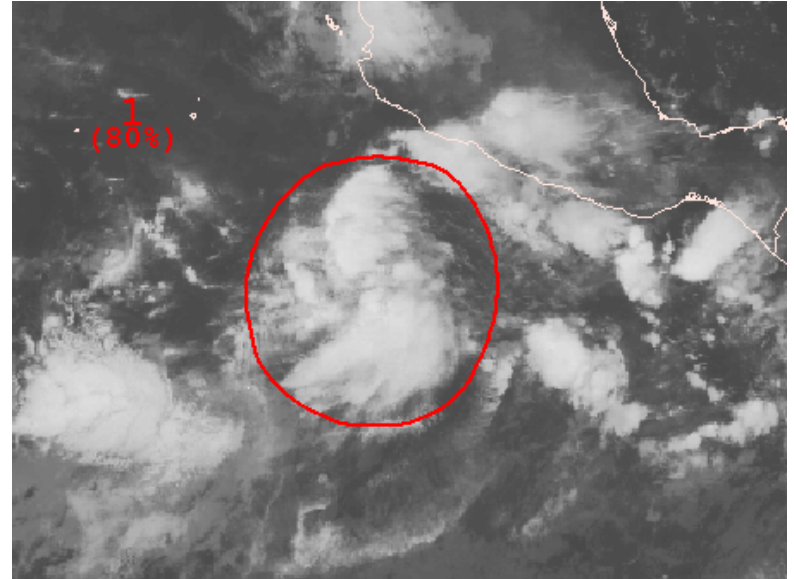




# Eastern Pacific – Area 1 (Invest 97E)

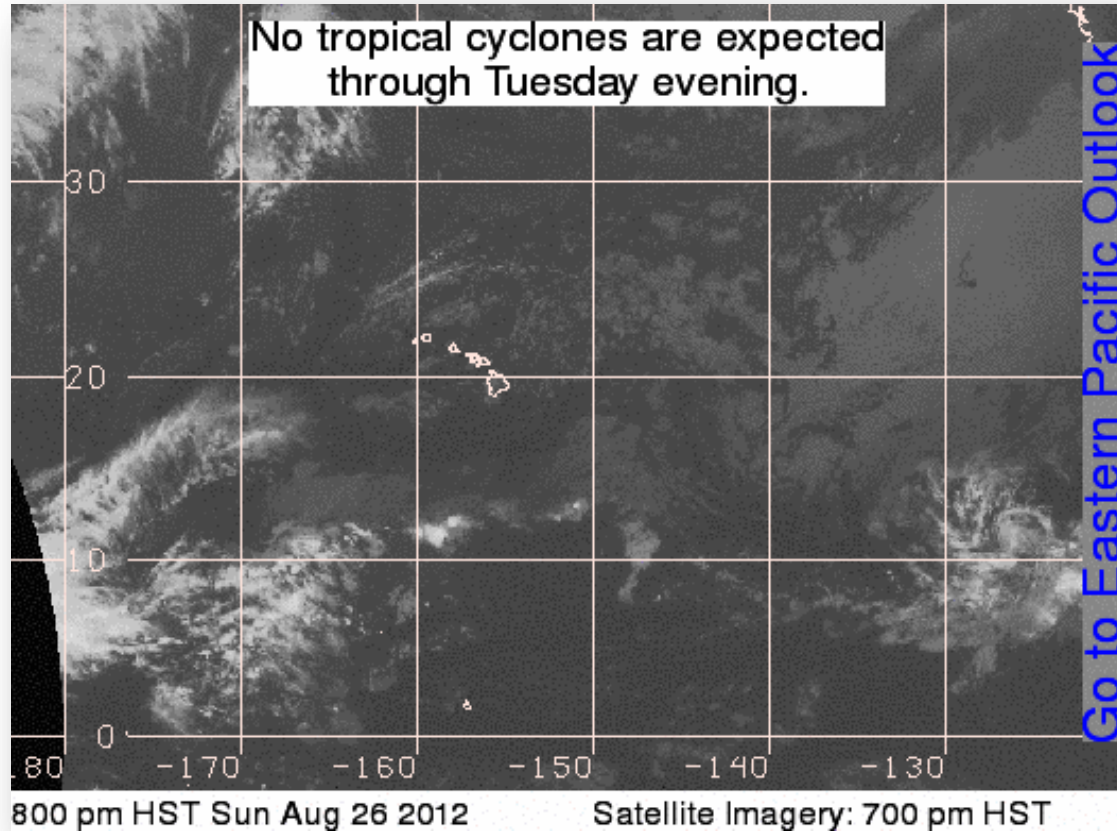
As of 8:00 a.m. EDT

- Showers and thunderstorms have become better organized in association with an area of low pressure
- 350 miles south of Manzanillo, Mexico
- Environmental conditions are conducive for gradual development during the next couple of days
- Moves WNW at about 10 mph
- High (80%) chance of becoming a tropical cyclone during the next 48 hours.





# Central Pacific – Tropical Outlook



# Tropical Storm Isaac - Response



## Region IV

- ▲ RRCC activated to Level II (Partial) with ESFs 1, 3, 5, 6, 8, 9, 12 and DCE
- ▲ 4 LNOs deployed (FL EOC; ISB Jacksonville, FL; AL EOC; MS EOC)
- ISBs are operational at NAS Jacksonville, FL & Maxwell AFB, AL
- IMATs deployed to AL & FL

## Florida

- SEOC activated to Level I (Full)
- Florida declared State of Emergency on August 25;
- Mandatory Evacuations: Flood prone areas of Escambia County
- Voluntary Evacuations: Broward, Charlotte, Monroe, Palm Beach, Walton & Miami-Dade counties
- ▲ 42 local/ARC shelters open with 563 occupants (*ESF-6*)
- ▲ Key West, Fort Lauderdale & Marathon Airports are closed; sea ports in Miami & Key West are closed; rail service disruptions occurring for Amtrak service from Orlando to Miami

## Alabama

- ▲ SEOC will go to Level III (Partial) today
- ▲ Alabama declared State of Emergency on August 27
- ▲ Mandatory evacuations for flood prone areas of Mobile and Baldwin

# Tropical Storm Isaac - Response



## **Mississippi**

- SEOC activated to Level III (Partial with MEMA staff)
- Mississippi declared State of Emergency
- Voluntary evacuations: Hancock, Harrison, Jackson, and Pearl River counties

## **Georgia**

- SEOC activated to Level III (Monitoring)
- There are no shortfalls or unmet needs at this time

# Tropical Storm Isaac - Response



## FEMA Region VI

- ▲ RRCC activated to Level II, with select ESFs
- ▲ IMAT-1 and pre-designated FCO are deployed to LA EOC in Baton Rouge, LA
- ▲ IOF is operational at Sherwood Forest in Baton Rouge, LA
- ▲ RSA has been identified at Camp Beauregard, LA

## **Louisiana**

- LA GOHSEP is at Level III; will go to Level II today
- ▲ Governor requested Emergency Declaration August 26
- Mandatory evacuations: flood prone areas of St. Charles, Jefferson, Plaquemines parishes

## FEMA HQ

- ▲ The NRCC is activated to Operations Level II
- NWC remains at Enhanced Watch (in support of RNC/DNC)
- National IMAT White and FCO deployed to Mississippi
- ▲ National IMAT Blue deployed to Georgia
- ▲ National IMAT Red on Alert
- ▲ Three MCOVs arrived in Jacksonville, FL; three MCOVs deployed to Alabama

# Future Planning: August 28 - onward



**Significant Events:** Atlantic / Caribbean Tropical Activity, NSSE's (RNC/DNC), Wildfires

## **Atlantic / Caribbean Tropical Activity:**

- TS Isaac: (3-5 Days)
  - Post landfall concerns
    - Inland Flooding
    - Mass Care (Sheltering & support services)
    - Search and Rescue

## **NSSE's:**

- RNC (Aug 26-30)
  - Activities postponed until Tuesday, Aug. 28
- DNC (Sep 3-6)
  - No specific risk/threat

## **Wildfires:**

- No significant shortfalls anticipated

**Territory LSA**

- Crown Bay Container Point, St Thomas

**POD Locations**

Identified

**Federally Recognized Tribes**

0

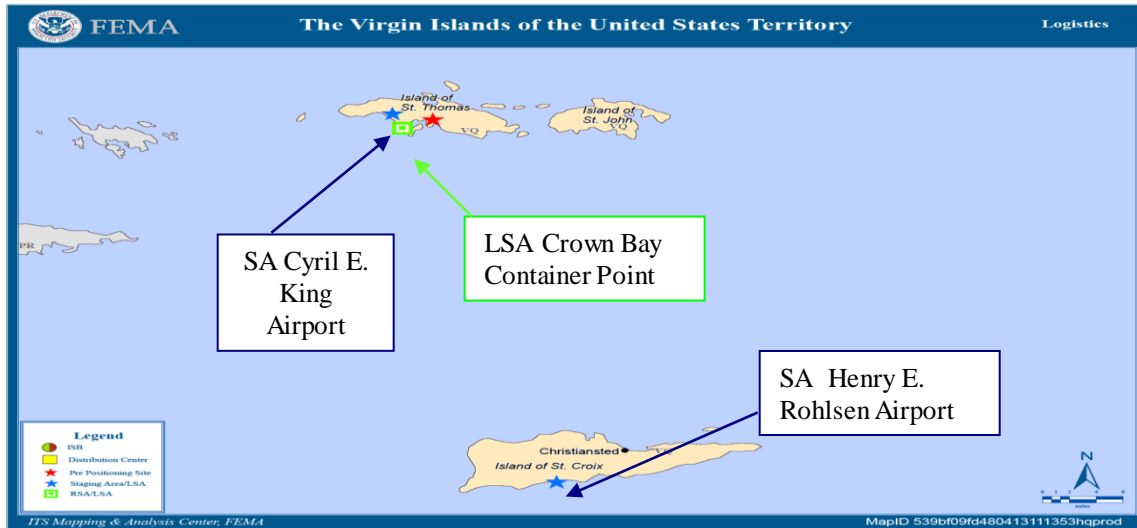


**Region II – U. S. Virgin Islands**

Based on Annex D to Federal Interagency Response Plan (FIRP)-Hurricane  
As of 8/2012



**FEMA**



**FEMA FSA**

- Cyril E. King Airport
- Henry E. Rohlsen Airport

**Distribution Center Source**

- DC Caribbean

**Concept of Resource Support**

- 7-20' PPDS Containers
- DC Caribbean
- Deep Sea Vessel Contract
- Meals Water
- St Thomas 41,472 54K ltrs
- St John 6,912 10.8K ltrs
- St Croix 41,472 54K ltrs

**Commonly Used Shelter Items/Services Listing**

- 3 Infant & Toddler Kits
- 3 CMS Kit
- 3 DME Kit
- Common shelter items
- Shelter services
  - Dependent upon shelter operations

**Power Generation**

- 33 Assessments: Completed by USACE and loaded in ENLink

**Next 24-72 Hours**

- Region II Log coordination call @ 1000 daily
- Load out of resources from DC Caribbean
- Arrival of resources at St Thomas and St Croix; containers to be held at Port
- Develop sustainment/resupply plan

**Commonwealth LSA**

- Toa Baja
- Vega Baja
- Utuado
- Aguadilla
- Mayaguez
- Sabana Grande
- Penuelas
- Cayey
- Guayarra
- Juncos
- Hurnacao
- Carolina
- Arecibo

**POD Locations**  
Partially Identified

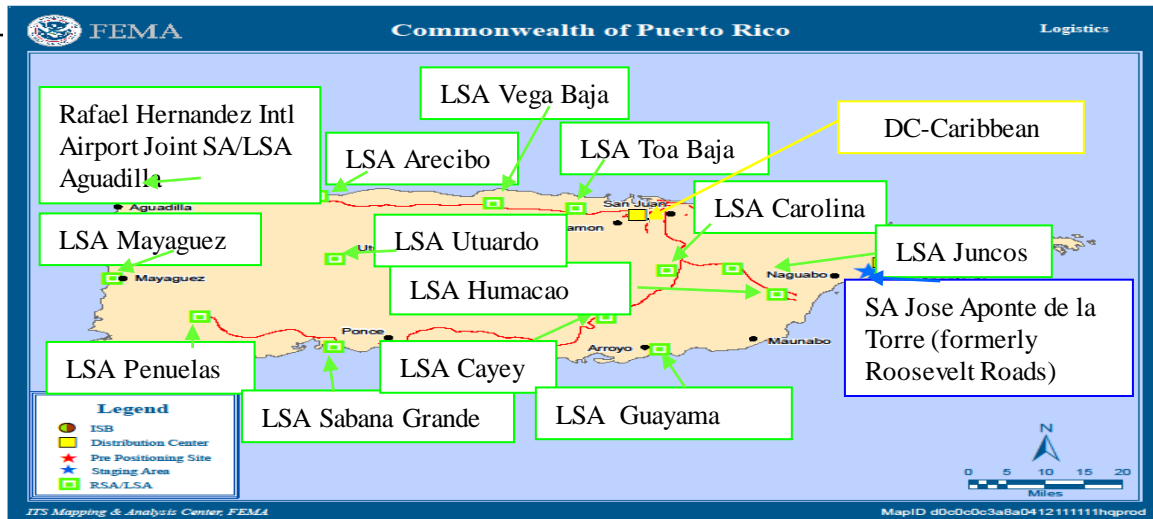
**Federally Recognized Tribes**

0



**Region II – U. S. Virgin Islands**

Based on Annex D to Federal Interagency Response Plan (FIRP)-Hurricane  
As of 8/2012



**FEMA FSA**

- Jose Aponte de la Torre Airport-Ceiba (formerly Roosevelt Roads NAS)
- Rafael Hernandez Intl Airport - Aguadilla

**Distribution Center Source**

- DC Caribbean

**Concept of Resource Support**

- DC Caribbean (remaining DC inventory after USVI pre-positioning contract)
  - 92, 524 liters Water
  - 271, 116 Meals
  - 1,520 Blankets
- CONUS to OCONUS Resupply

**Commonly Used Shelter Items/Services Listing**

- 10 Infant & Toddler Kits
- 1 CMS Kit
- 1 DME Kit
- Common shelter items
- Shelter services
  - Dependent upon shelter operations

**Power Generation**

- 331 Assessments: Completed by USACE and loaded in ENLink

**Next 24-72 Hours**

- Reg II Log coordination call @ 1000 daily
- Develop sustainment / resupply plan





**DC-Caguas, PR**  
**Water (liters):** 114,652 (8 Tls)  
**Meals (ea.):** 518,556 (24 Tls)  
**Cots (ea.):** 1,476 (2 Tls)  
**Blankets (ea.):** 1,518 (1 TL)  
**Generators (ea.):** 72  
**Blue Roof (rolls):** 5,320 (9 Tls)  
**Tarps (ea.):** 1,172 (1 TL)  
**CMS Kits (ea.):** 1  
**DME Kits (ea.):** 1

**ST. THOMAS**  
**Arrived**  
**Water:** 48,600 (3Tls)  
**Meals:** 41,472 (2Tls)

**Next 24-48 hrs**  
 • Retrograde Planning in progress

**ST. CROIX**  
**Arrived**  
**Water:** 47,700 (3 Tls)  
**Meals:** 41,472 (2Tls)  
**Infant Kit:** 1

**Next 24-48 hrs**  
 • Retrograde Planning in progress

**PPS-St. John, VI**  
**PPDS 20ft (ea.):** 1

**PPS-St. Thomas, VI**  
**Water (liters):** 48,600 (3 Tls)  
**Meals (ea.):** 41,472 (2 Tls)  
**Tarps (ea.):** 1,244  
**PPDS 20ft (ea.):** 3

**PPS-St. Croix, VI**  
**Water (liters):** 47,700 (3 Tls)  
**Meals (ea.):** 41,472 (2 Tls)  
**PPDS 20ft (ea.):** 3

**Legend**

DC (Distribution Center)

PPS (Pre-Positioning Site)

TL = Commodity by 53 ft trailer loads.

Source: DMD - Supply Chain Integration Branch

08/23/12 -- 18:21 PM EST



## State LSA

- Homestead AFB
- Florida State Warehouse, Orlando
- Camp Blanding
- Lakeland Linder Regional Airport

## POD Locations Identified

## Federally Recognized Tribes

2



## Region IV – Florida

(Based on Annex D, Federal Interagency Response Plan-Hurricane)  
As of 8/2012

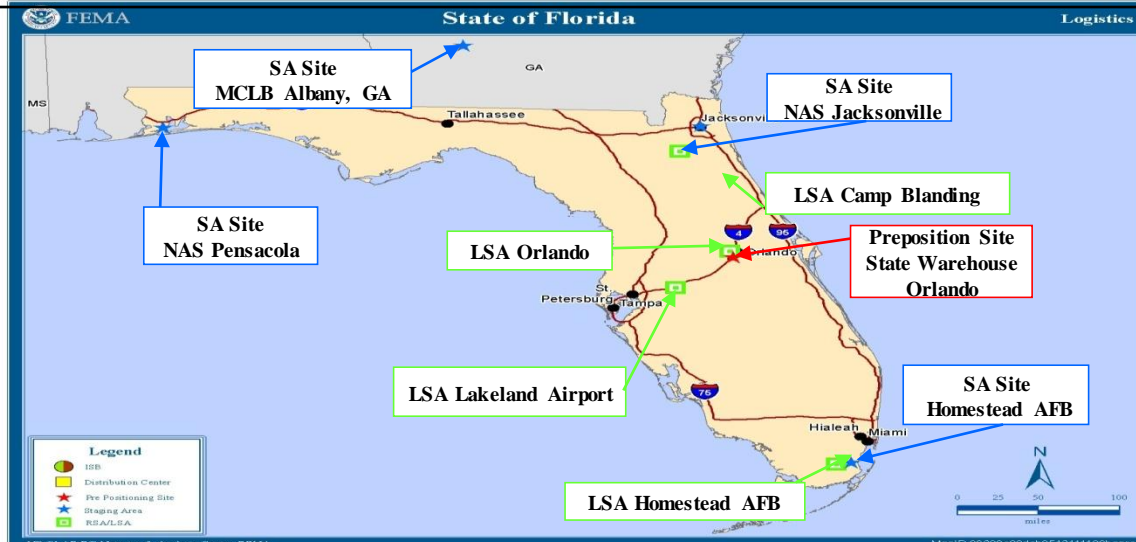


## FEMA SA/ISB

- MCLB Albany, GA
- NAS Jacksonville
- NAS Pensacola
- Homestead AFB

## Distribution Center Source

- DC Atlanta (primary)
- DC Frederick
- DC Ft Worth



## Concept of Resource Support

Beginning 24 Aug: Delivered to ISB NAS Jacksonville, FL – IRR (*Initial Response Resource*) Package Alpha

- 1.05M Meals    1ea CMS/DME
- 400K Water    3 MCOV
- 2.1K Cots    Generators
- 4.5K Blankets
- 20 Infant Toddler Kits

## Commonly Used Shelter Items/Services Listing

- 10 Infant & Toddler Kits
- 1 CMS Kit
- 1 DME Kit
- Common shelter items
- Shelter services
  - Dependent upon shelter operations

## Power Generation

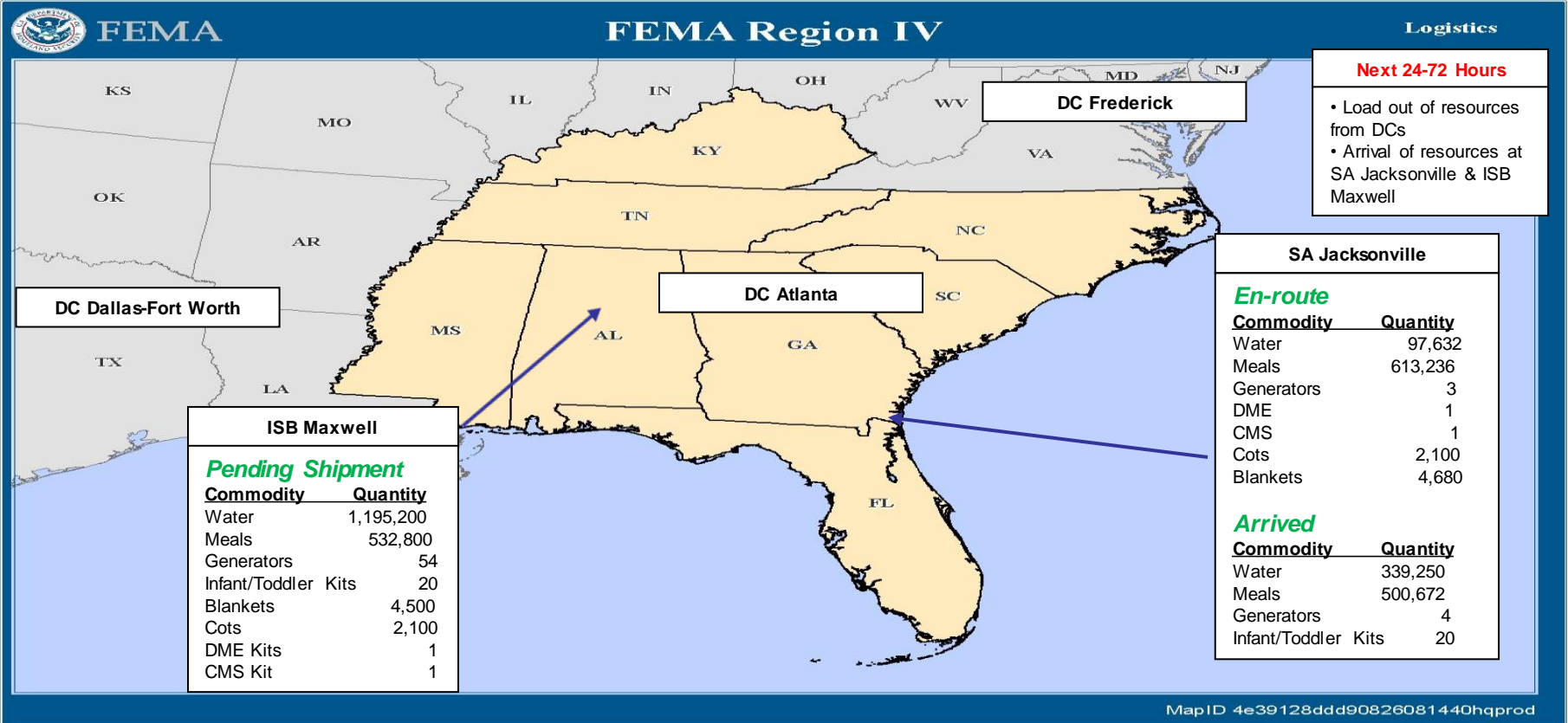
- Florida has conducted power assessments with local vendors
- No USACE assessments on file

## Next 24-72 Hours

- R-IV Ops/Log coordination call @ 1000 daily
- Load out of resources from DCs
- Arrival of resources at ISB NAS Jacksonville Aug 24-26; RDD is Aug 26
- Develop sustainment/resupply plan

# FEMA Region IV Sustainment

as of 8/26/12 0600 EDT



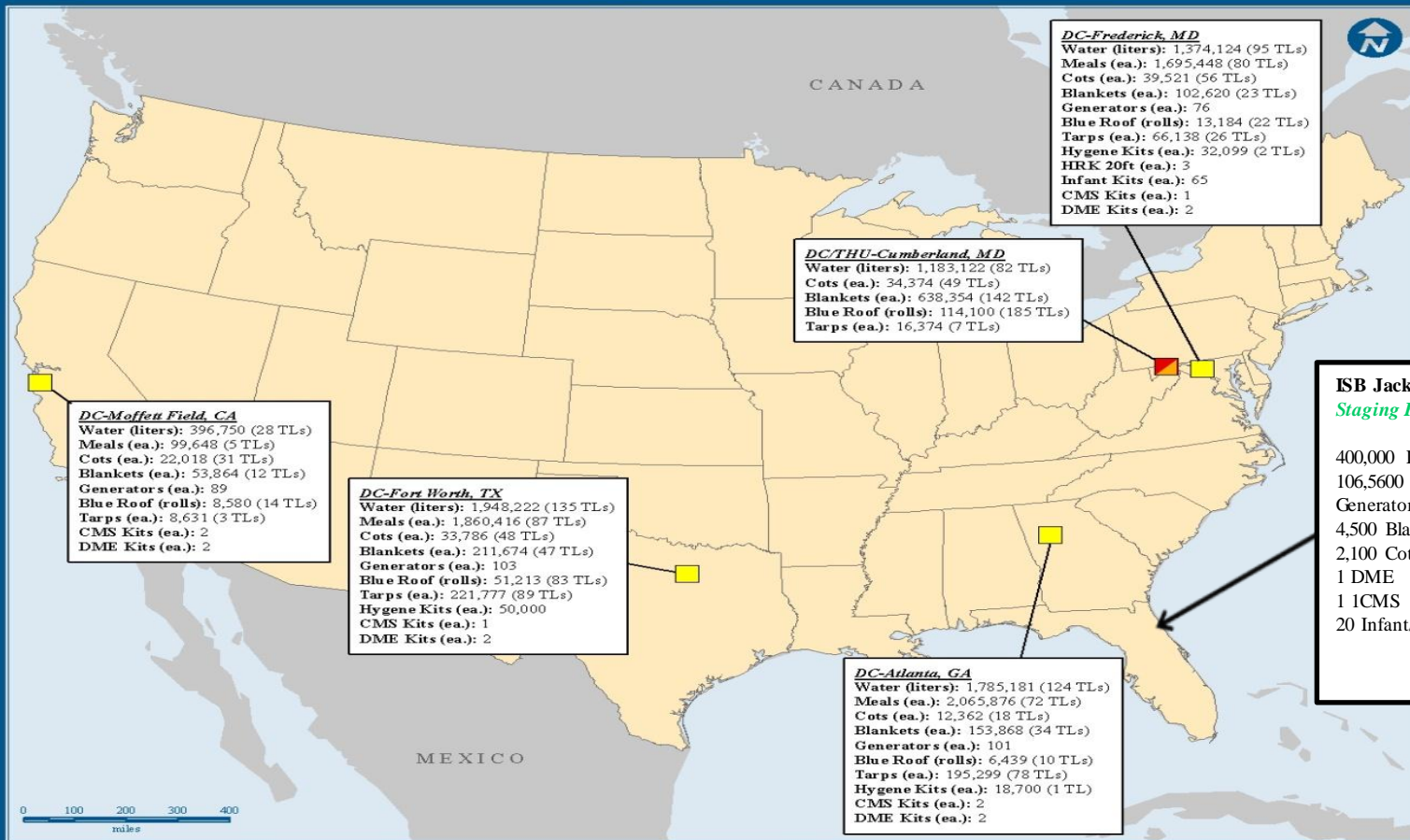
*Plan*

*Manage*

*Sustain*



# FEMA Logistics CONUS DC Commodities As Reported 08/23/2012 15:00 EST



### Legend

- DC (Distribution Center)
- Joint DC/THU (Temp. Housing Unit)

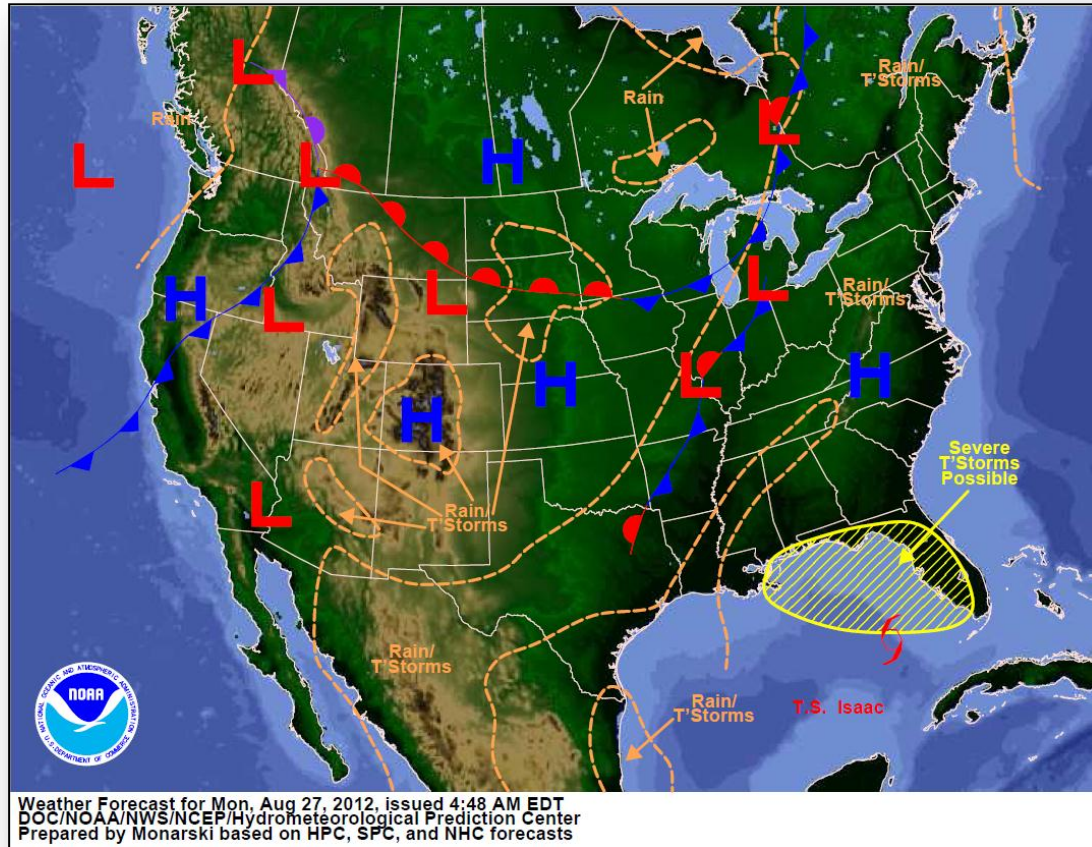


TL = Commodity by 53 ft trailer loads.  
 Source: DMD - Supply Chain Integration Branch

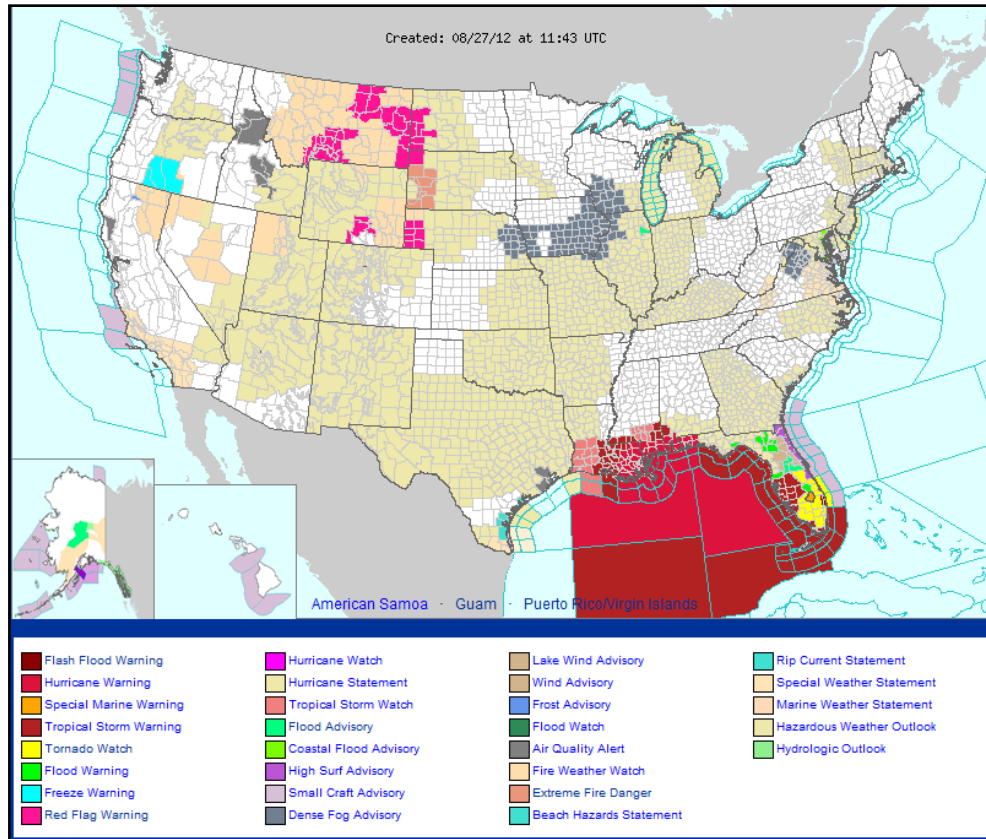
08/23/12 -- 18:14 PM EST



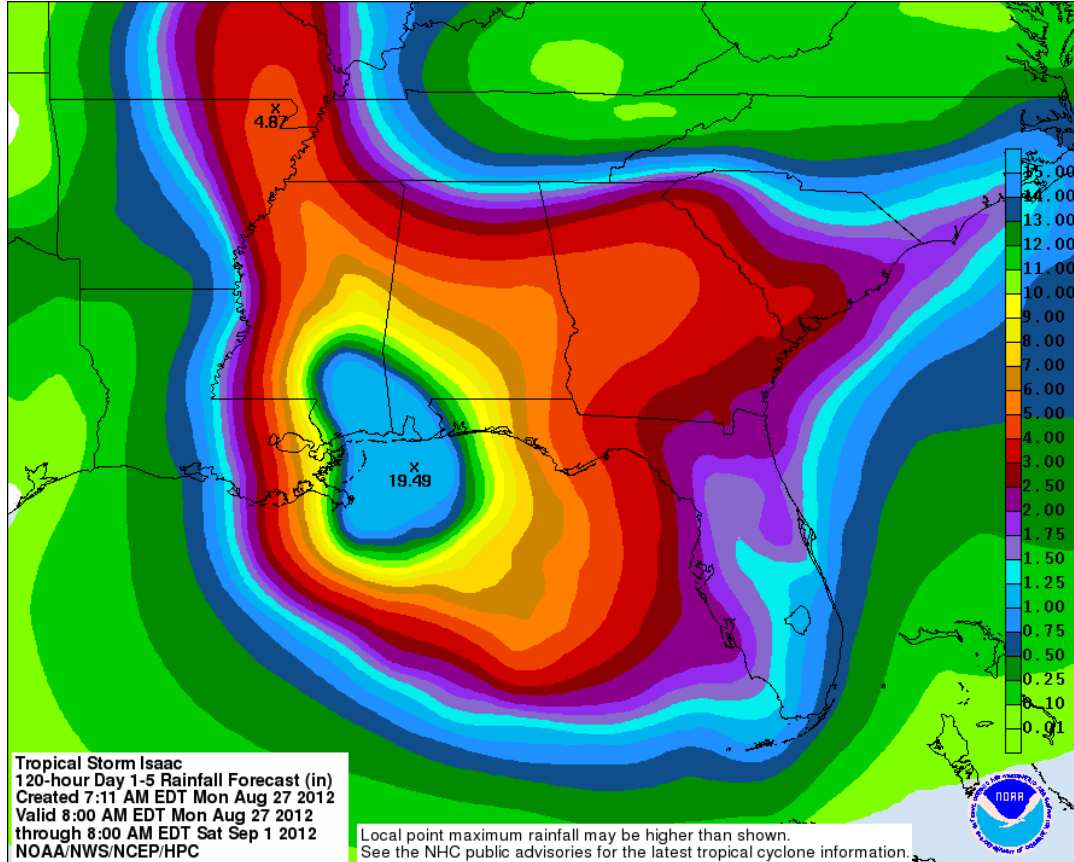
# National Weather Forecast



# Active Watches/Warnings

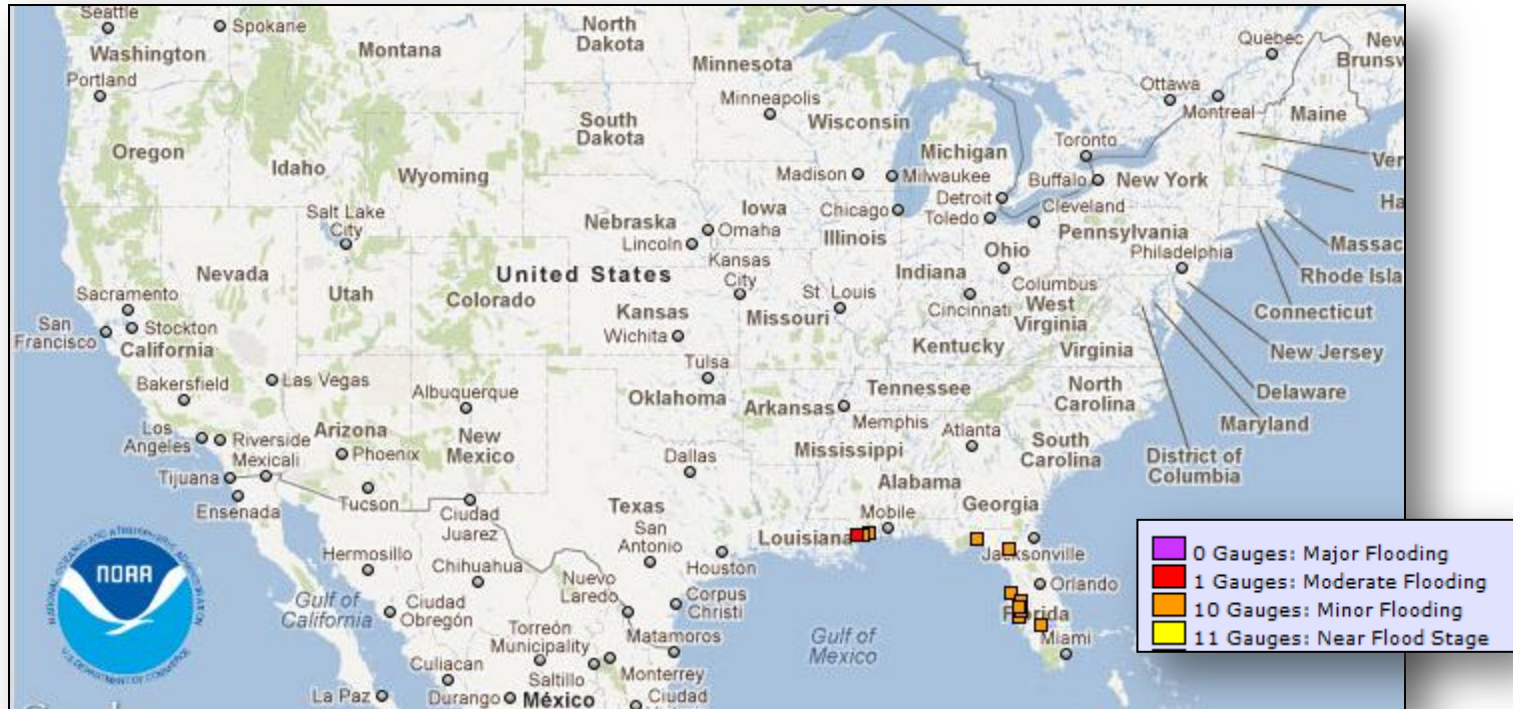


# Precipitation Forecast – TS Isaac

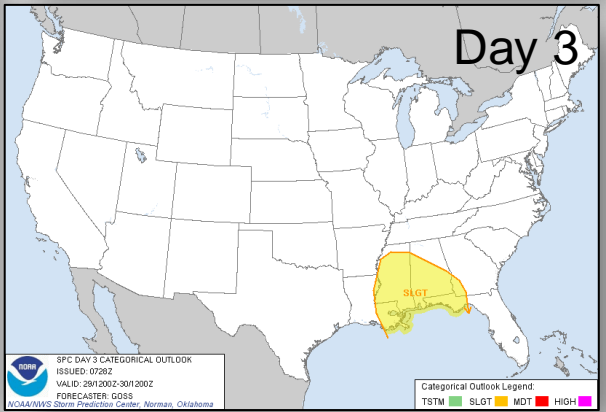
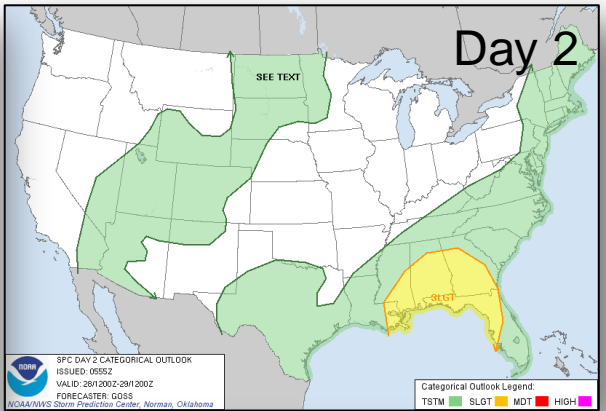
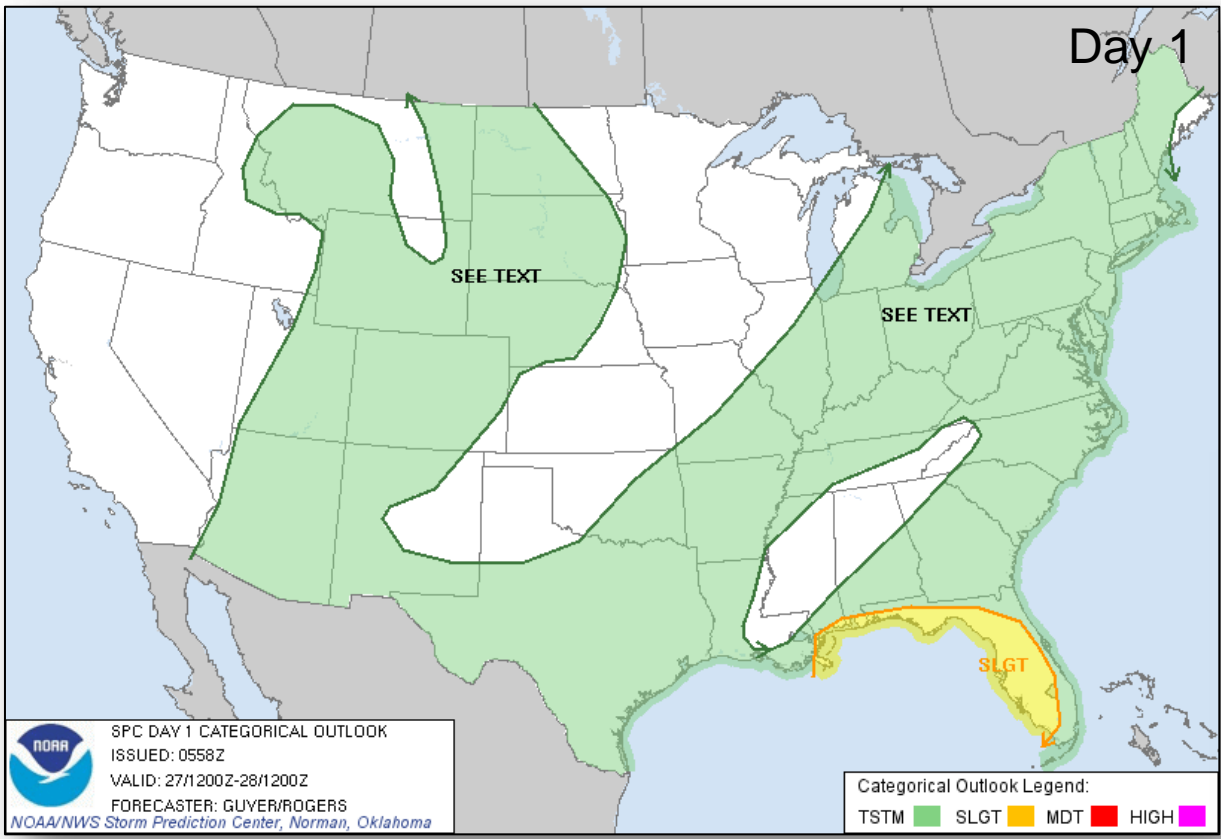




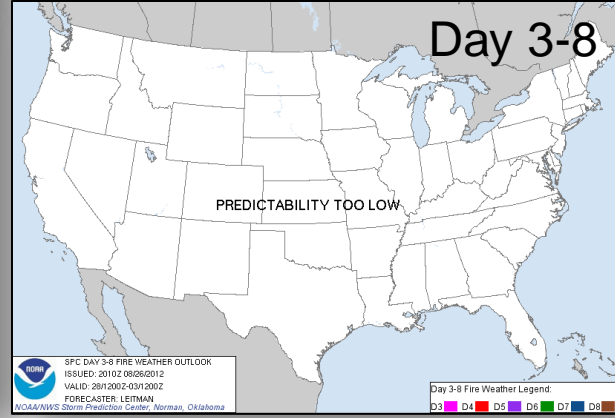
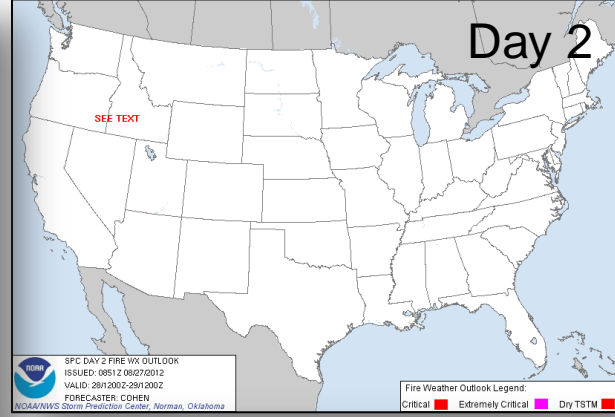
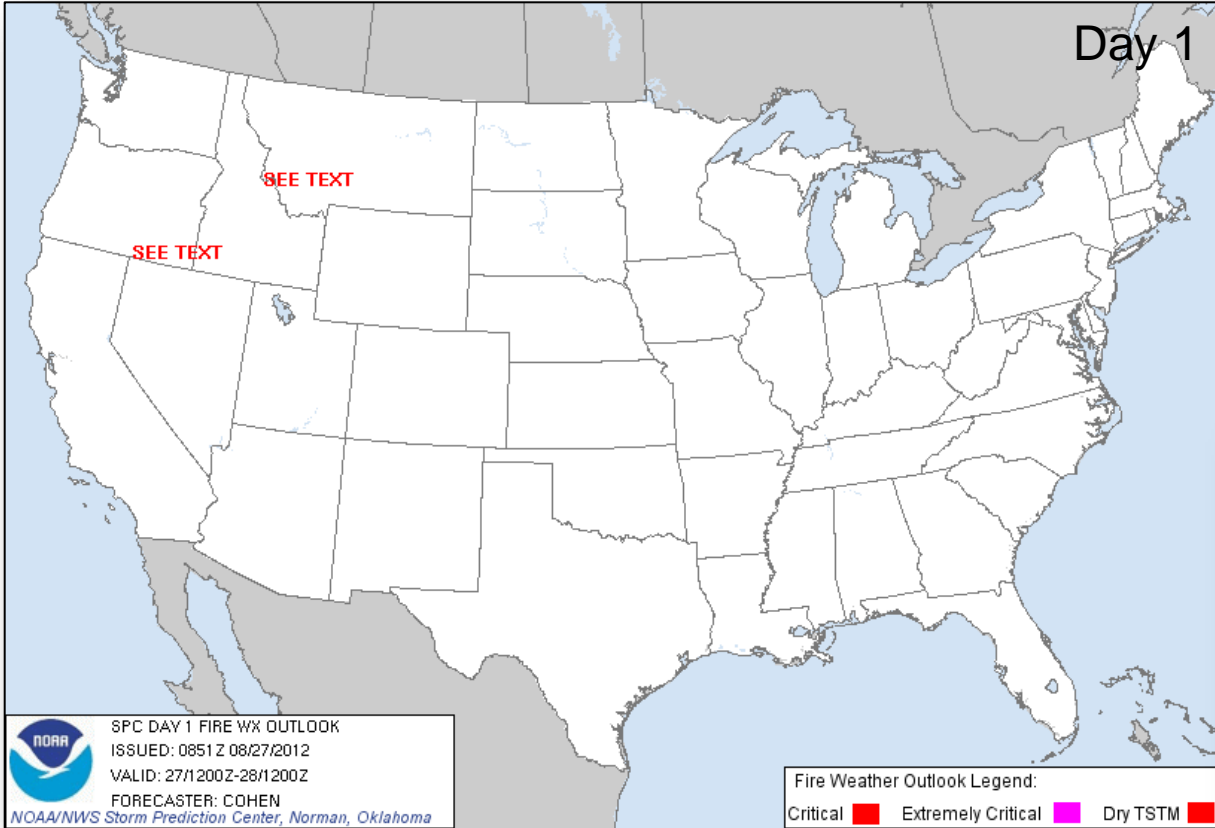
# River Flood Outlook – 7 Day



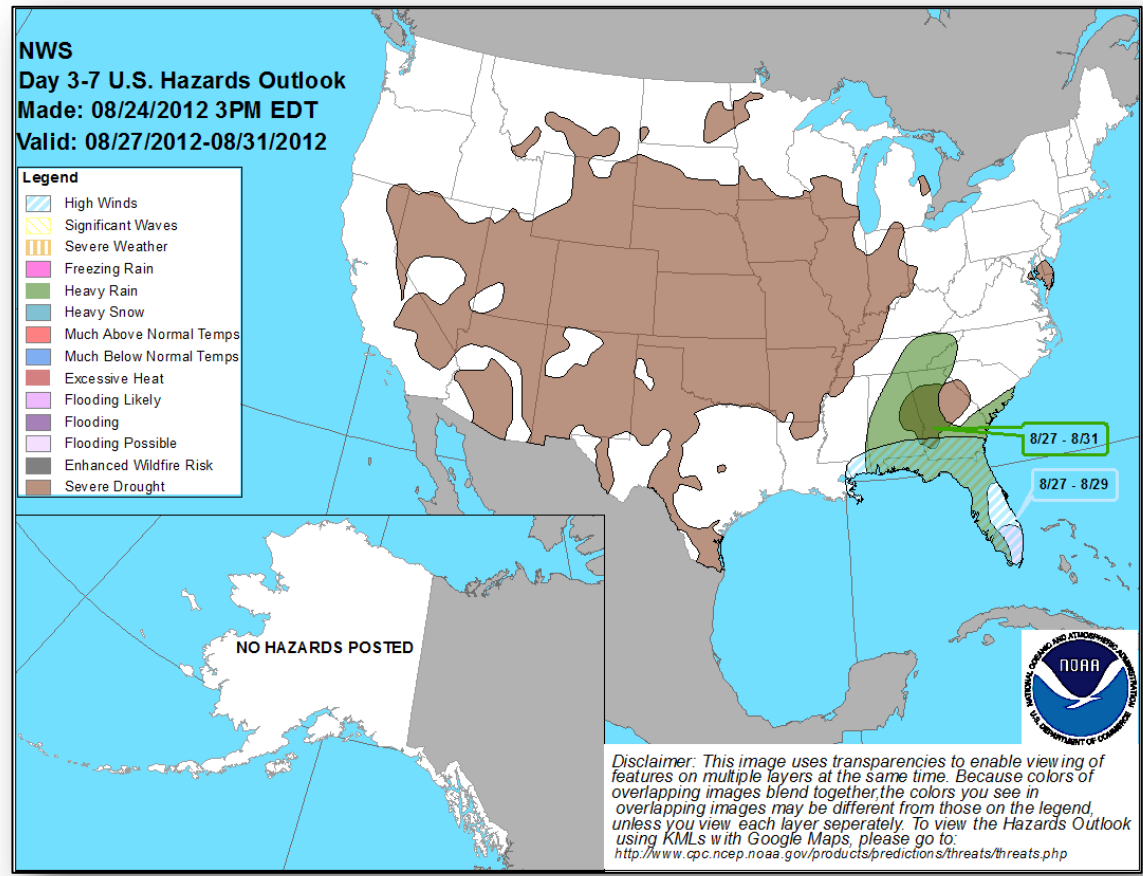
# Convective Outlook Days 1-3



# Critical Fire Weather Areas Days 1-8



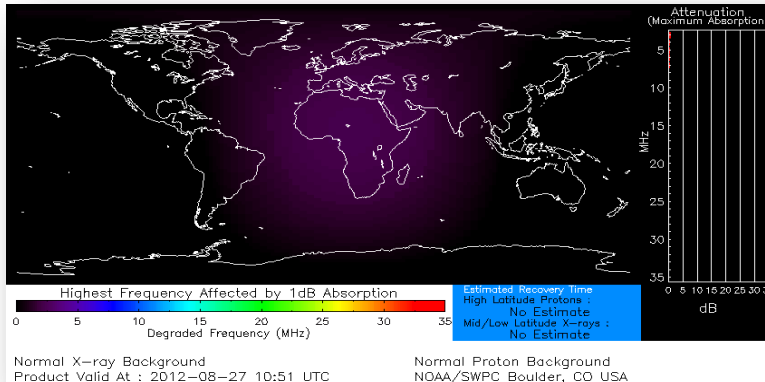
# Hazard Outlook: August 27 - 31



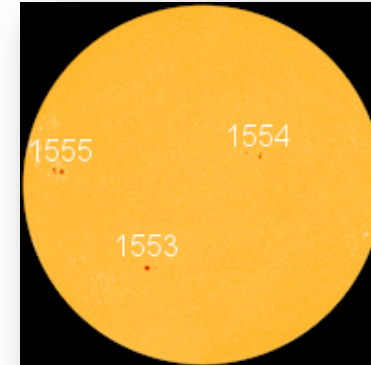
# Space Weather

NOAA Scales Activity Range 1 (minor) to 5 (extreme)	Past 24 Hours	Current	Next 24 Hours
Space Weather:	None	None	None
• Geomagnetic Storms	None	None	None
• Solar Radiation Storms	None	None	None
• Radio Blackouts	None	None	None

## HF Communications Impact

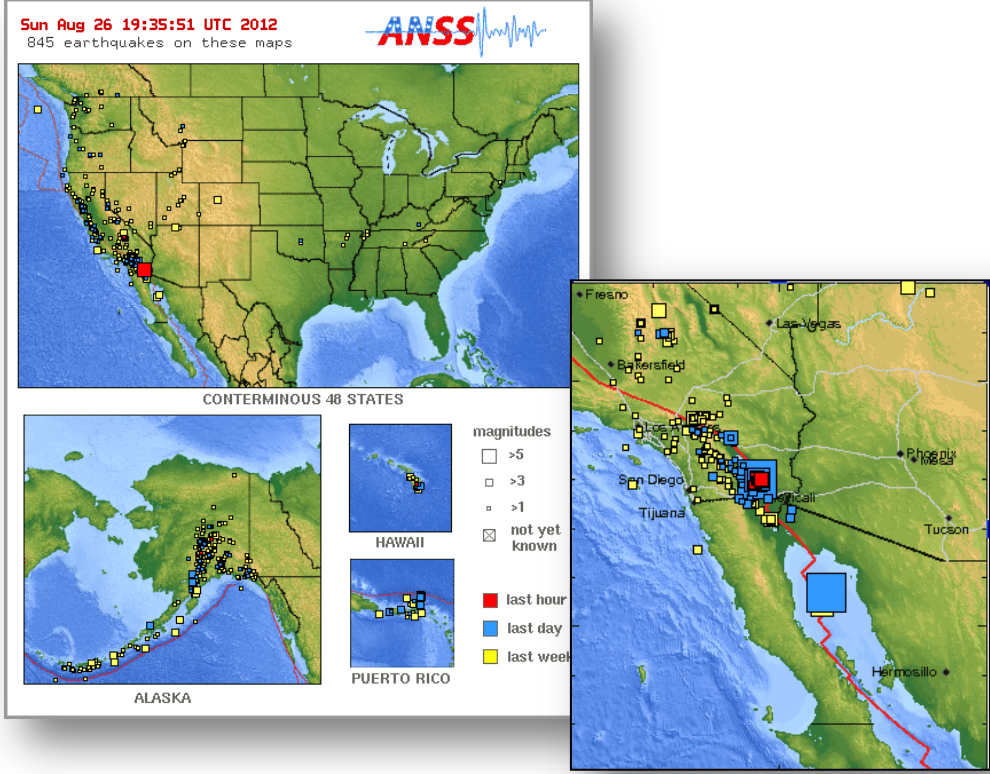


## Sunspot Activity





# Significant Earthquake –U.S.



## Earthquake Swarm Southern California

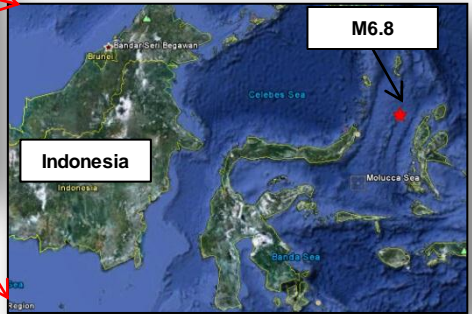
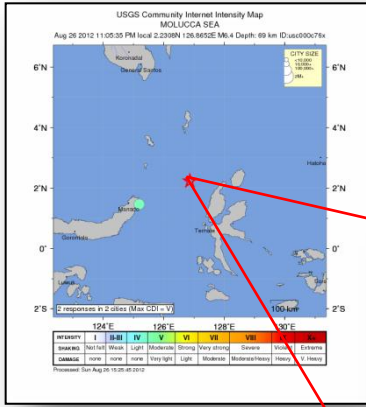
- M 5.3 earthquake
  - Occurred August 27, 2012 at 3:31 p.m. EDT
  - Approx. 3 miles from Brawley, CA
  - Approx. 90-100 miles ENE from San Diego, CA
  - Depth: 5.5 miles
- Over 100 aftershocks; numerous foreshocks
- Region IX in contact with Cal EMA
- Seismically active area; NEIC Seismologist does not consider this a precursor to a larger event
- Minor damage reported; no injuries reported
- 2,100 customers reported without power
- Power restored to Pioneer Memorial Hospital
- No request for FEMA assistance and no unmet needs

# Significant Earthquake - International



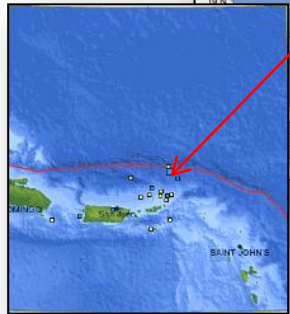
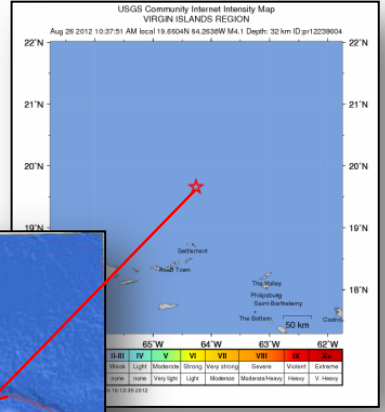
## M6.8 - Molucca Sea

- Occurred Sunday, August 26, 2012 at 11:35 a.m. EDT
- 101 miles NNW of Ternate, Muluccas, Indonesia
- Depth: 66.2 miles
- Alert Level: Green alert for shaking-related fatalities and economic losses
- No tsunami generated



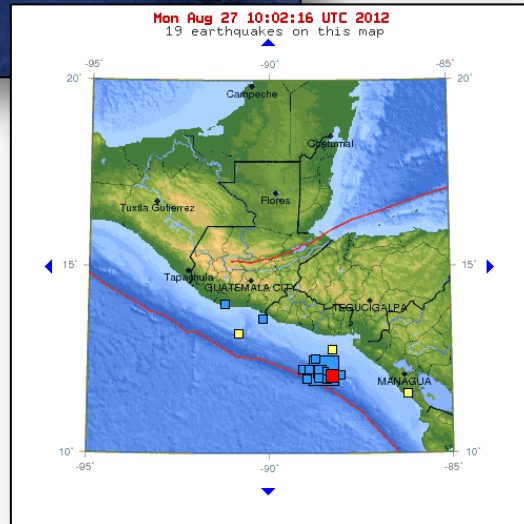
## M4.1 - British Virgin Islands

- Occurred Sun, August 26, 2012 at 10:37 a.m. EDT
- 64 miles N of Settlement, BVI
- Depth: 19.9 miles
- Alert Level: Green alert for shaking-related fatalities and economic losses
- No damage reported and no tsunami generated





# Significant Earthquake - International



## M7.3 – Off the Coast of El Salvador

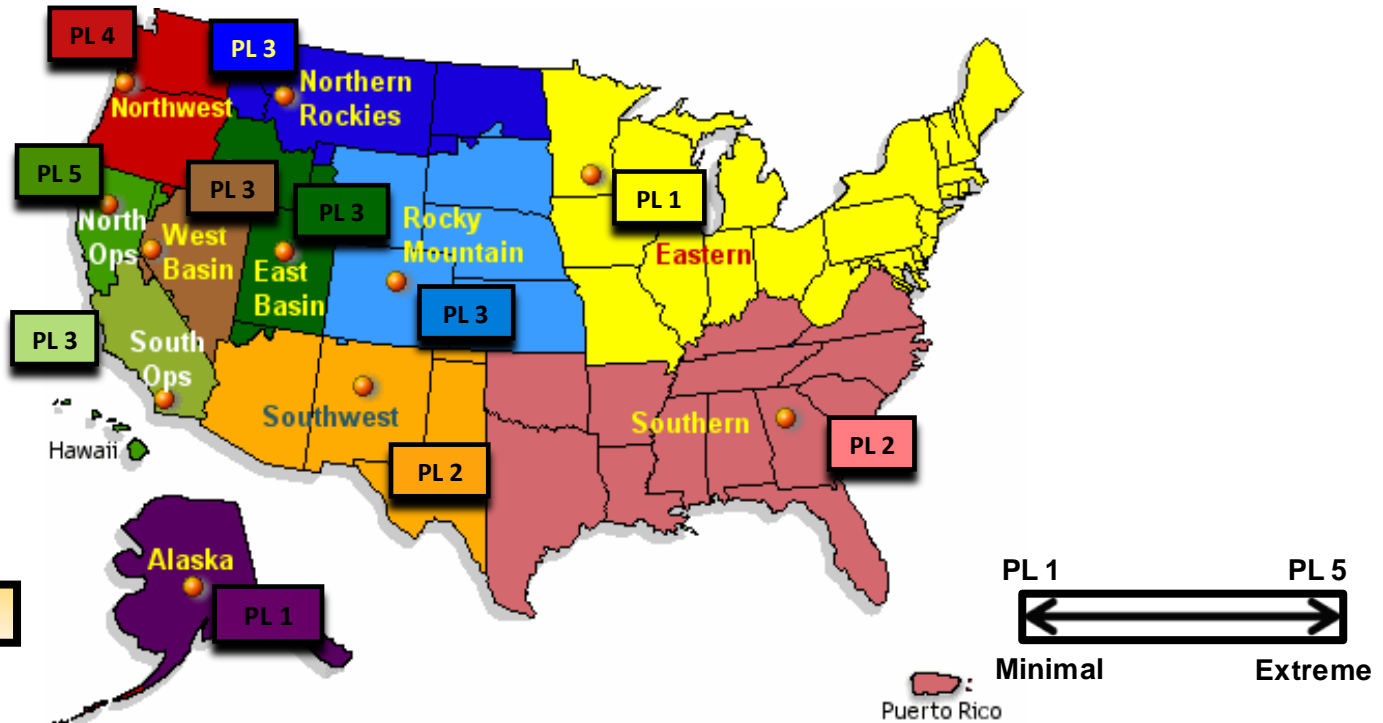
- Occurred Monday, August 27, 2012 at 12:37a.m. EDT
- 109 miles SSE of San Salvador, El Salvador
- Depth: 31.4 miles
- Local tsunami warning issued
- A small tsunami was observed at Acajutla, El Salvador (0.3 feet)
- No initial reports of injuries or damage

# US Wildland Fire Preparedness Levels



## National Preparedness Level: 4

Three or more Geographic Areas are experiencing incidents requiring Type 1 and 2 IMTs. Competition exists between Geographic Areas. Nationally, 60 percent of Type 1 and 2 IMTs and crews are committed..



As of August 26, 2012

# National Fire Activity



## August 27, 2012:

- National Preparedness Level: 4
- Initial Attack Activity: Light (98)
- New Large Fires: 1
- Large Fires Contained: 4
- Uncontained Large Fires: 25
- Area Command Teams committed: 0
- NIMOs committed: 3
- Type 1 IMT(s) committed: 6
- Type 2 IMT(s) Committed: 7
- States Affected: WY, CA, ID, ND, SD, MT, OR, WA, NV, MN, OK



# Western Wildfire Summary



Fire Name (County)	FMAG #	Acres burned	% Contained	Evacuations (Type)	Structures Threatened	Structures Destroyed	Fatalities / Injuries
California (2)							
Chips Fire (Plumas County, CA)	Not Requested	68,582 (+5,435)	65% (+10)	Yes (Mandatory)	940	7	0/16
Ponderosa Fire (FINAL) (Tehama/Shasta Counties)	5007-FM-CA August 19	28,098 (+120)	74% (+13)	No	340	84	0/4
Idaho (2)							
Halstead Fire (Custer County, ID)	Not Requested	103,000 (+6,764)	7%	Yes (Voluntary)	417	0	0/4
Trinity Ridge Fire (Elmore County, ID)	5006-FM-ID August 15	123,008 (+17,798)	5%	Yes (Mandatory)	1,059	12	0/5

# Ponderosa Fire, CA (FINAL)



Fire Name	Location	Acres burned	% Contained	Est. Full Containment	FMAG	Structures Lost / Threatened	Fatalities / Injuries
Ponderosa	Tehama/Shasta Counties	28,098 (+422)	74% (+3)	August 27, 2012	FEMA-5007-FM-CA August 19, 2012	84 / 340	0 / 4

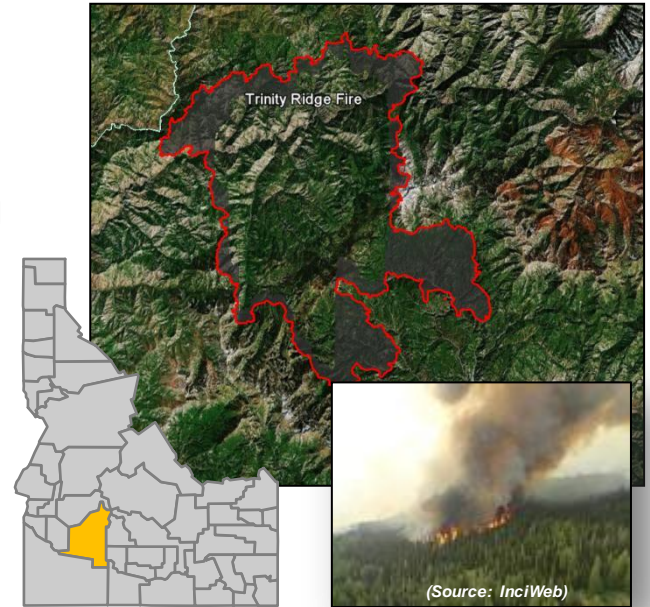
- Located near Shingletown (pop 2,283) and SE of Redding in northern California
- All areas with the fire perimeter remain closed to all residents & property owners
- All evacuation orders and road closures have been lifted
- 1 ARC shelter open with no occupants
- CAL Fire IMT 1 with 1,936 (-302) total personnel responding
- Shasta County EOC fully activated; Tehama County EOC not activated
- CAL SEOC not activated
- FEMA Region IX monitoring
- Governor of California issued emergency proclamation for Plumas (Chips Fire), Shasta and Tehama Counties (Ponderosa Fire)



# Trinity Ridge Fire, ID

Fire Name	Location	Acres burned	% Contained	Est. Full Containment	FMAG	Structures Lost / Threatened	Fatalities / Injuries
Trinity Ridge	Elmore County	122,990	5%	October 15, 2012	FEMA-5006-FM-ID August 15, 2012	12 / 1,059	0 / 5

- Located 7 miles NW of Featherville, ID (pop 600)
- Mandatory evacuations remain in effect
- 1 ARC shelter open with 6(-1) occupants
- Type 1 IMT assigned with 1,440 (+4) personnel responding
- Idaho State EOC partially activated
- FEMA Region X monitoring



# Disaster Requests & Declarations



Declaration Requests in Process		Requests APPROVED (since last report)	Requests DENIED (since last report)
1	Date Requested	1	0
LA – Tropical Storm Isaac (EM)	August 26, 2012		
NM – DR Flooding	August 10, 2012	August 24, 2012	

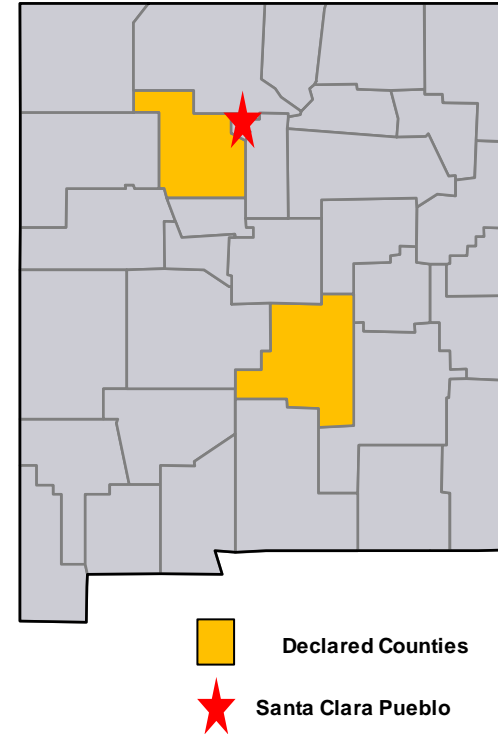


# Disaster Declaration – New Mexico



## FEMA-4079-DR-NM

- Approved August 24, 2012
- For Flooding that occurred June 22 - July 12, 2012
- Provides PA for Lincoln and Sandoval counties and the Santa Clara Pueblo.
- All counties and Indian Tribes in the State of New Mexico are eligible to apply for assistance under the Hazard Mitigation Grant Program.
- FCO is Nancy M. Casper of the National FCO Program.



# FMAG Requests and Declarations



Action (since last report)	Total	FMAG No. and State
Requests DENIED	0	
Requests APPROVED	0	
Requests Expected Next 24 Hours	0	None as of 1200 8/24/12

As of August 24, 2012	2012	2011*
FMAGs Approved	34	90
FMAGs Denied	15	28
* Cumulative FMAG figures as of this date in 2011		

# OFDC Cadre Member Status



## Federal Coordinating Officer

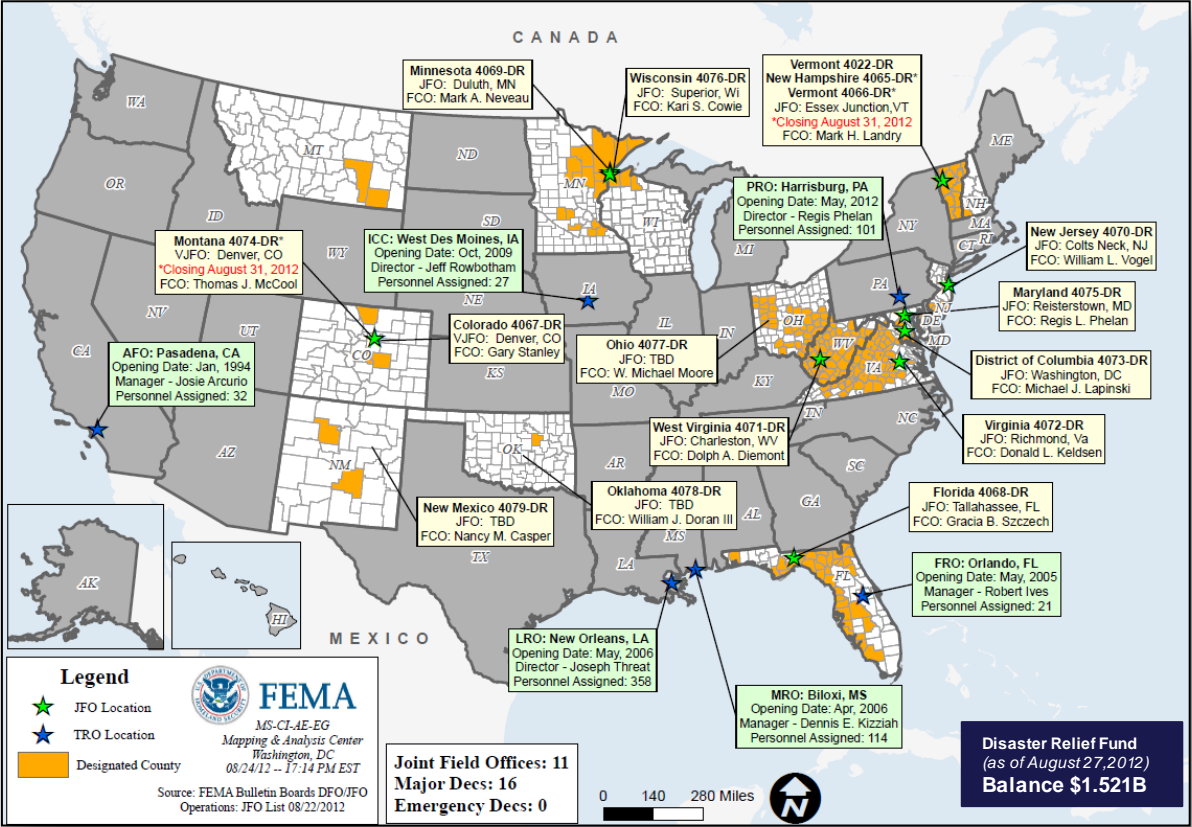
Deployed	Detailed	Available	Not Available	Total
18	3	13	3	37
Total Available	Type 1	Type 2	Type 3	Type 4
16*	3*	11	1	0

\* All Type 1 FCOs are available unless deployed to a Level 1 event

## Federal Disaster Recovery Coordinator

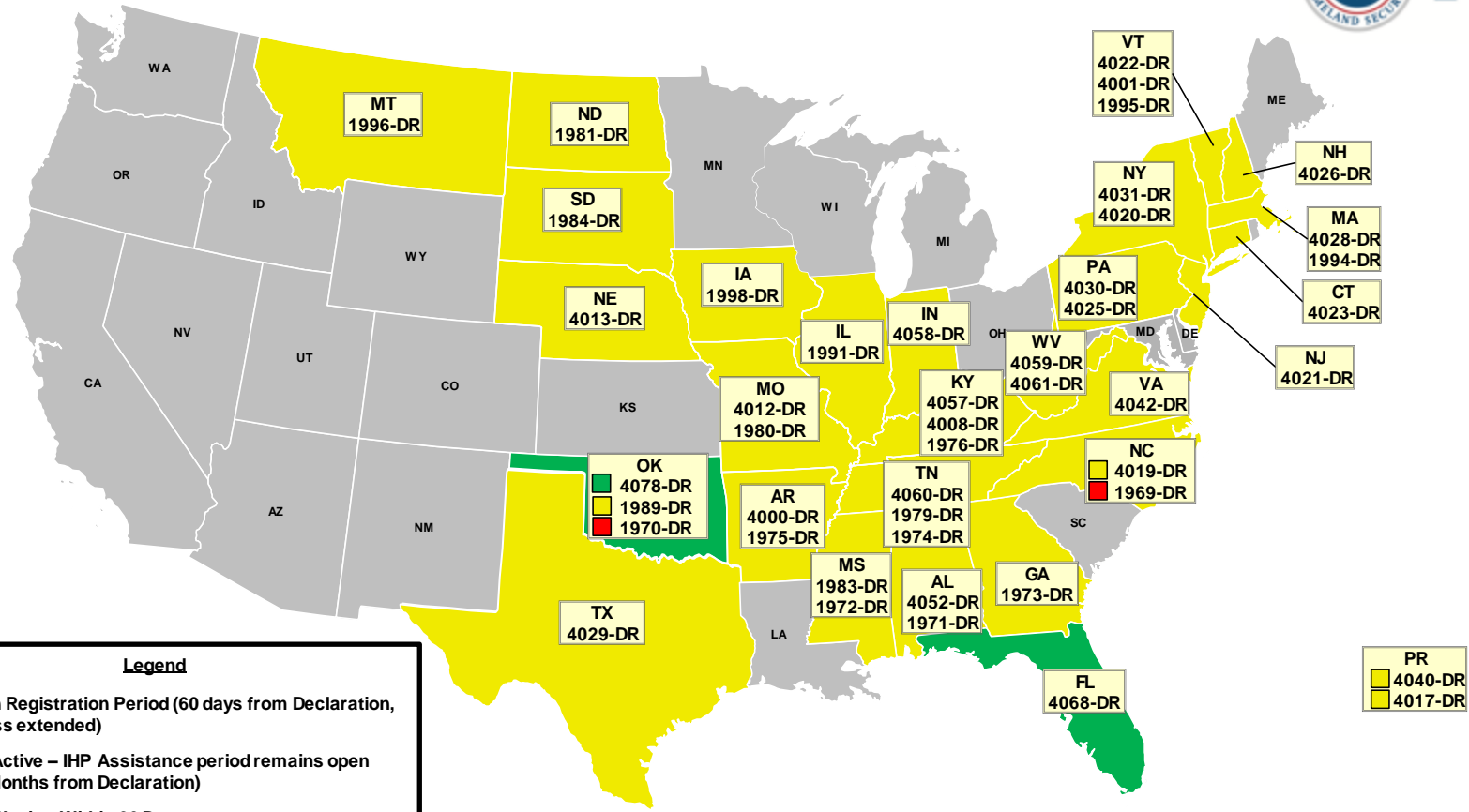
Positions	On Board	Available	Deployed	Pending Hire
10	5	4	1	0

# Open Field Offices as of August 27, 2012





# Active IA Disasters



# of DRs	Legend
2	Open Registration Period (60 days from Declaration, unless extended)
42	IHP Active – IHP Assistance period remains open (18 Months from Declaration)
2	IHP Closing Within 60 Days

Data as of: 08/26/12 @ 1500

# IA Registration Statistics



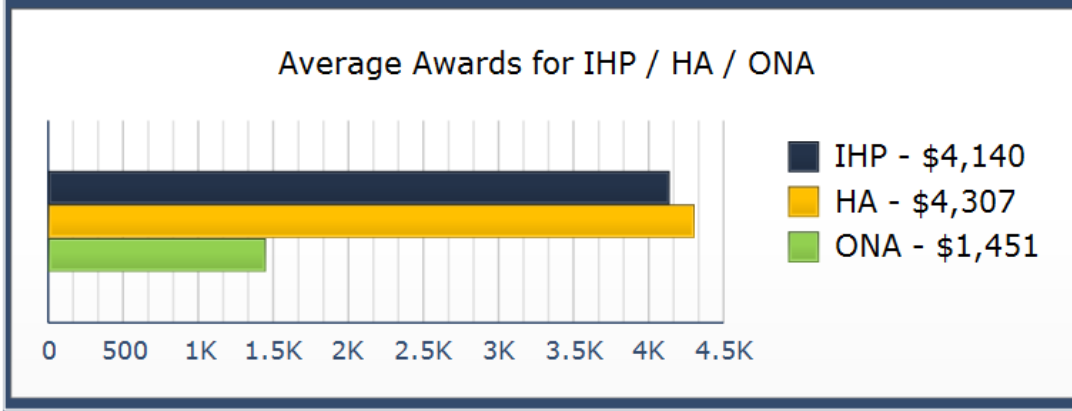
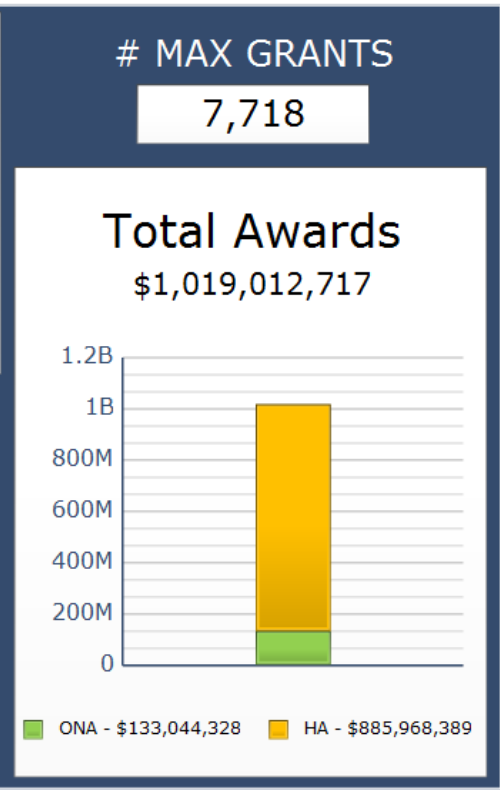
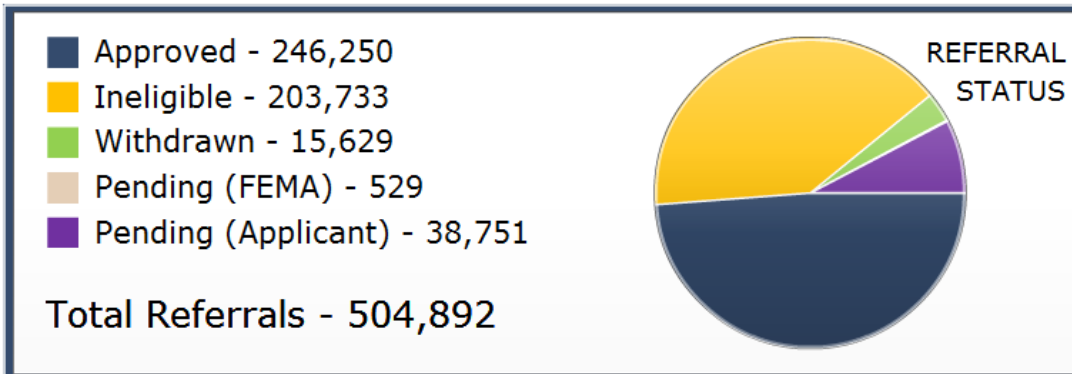
## Cumulative as of August 26, 2012 @ 1500

DR # - State	Registrations	Approved Applicants	Total HA Approved	Total ONA Approved	Total IHP Approved
4068 - FL	15,893	5,906	\$19,312,888	\$2,287,865	\$22,000,753
4078 - OK	233	98	\$1,949,843	\$116,222	\$2,066,065
<b>Totals</b>	<b>16,126</b>	<b>6,004</b>	<b>\$21,262,730</b>	<b>\$2,804,088</b>	<b>\$24,066,818</b>
72 hour change	+377	+213	+\$2,224,890	+\$134,900	+\$2,359,790

## NPSC Call Data for August 23, 2012

Total NPSC Calls Answered (Helpline + Registration Intake)	1,421
Average time to answer call	11 seconds

# IHP Referral Status & Awards



Data includes the 46 IHP Active DRs  
 # Max Grants = Applicants awarded maximum IHP (\$30,200 as of FY2012)

Data as of: 08/26/12 @ 1500



# Housing Inspection Statistics



**Data as of August 26, 2012 @ 1600**

<b>DR # - State</b>	<b>Inspectors</b>	<b>Inspections Assigned</b>	<b>Inspections Completed</b>	<b>Inspection % Complete</b>	<b>Turnaround Time (Days)</b>
<b>4068 - FL</b>	14	13,072	12,920	98.8%	1.7
<b>4078 - OK</b>	5	181	130	71.8%	1.6
<b>TOTAL</b>	<b>19</b>	<b>13,253</b>	<b>13,050</b>	<b>98.5%</b>	<b>1.7</b>
<b>72 hour change</b>	<b>0</b>	<b>+280</b>	<b>+449</b>	<b>+1.3%</b>	<b>+0.0</b>

\* Only displaying inspectors for DRs that currently have open registration periods

# IMAT Status



National Teams					
Team	Status	Team	Status	Team	Status
BLUE (East)	GA/FL	WHITE (Central)	MS	RED (West)	On Alert
Regional Teams					
Team	Status	Team	Status	Team	Status
Region I		Region V	OH	Region IX-1	
Region II		Region VI-1	LA	Region IX-2	
Region III	VA	Region VI-2	OK	Region X	
Region IV-1	AL	Region VII			
Region IV-2	FL	Region VIII			

= Available/Mission Capable     
  = Assigned/Deployed  
 = Available/Partially Mission Capable     
  = Out-of-Service

# Urban Search & Rescue



FEMA

INCIDENT SUPPORT TEAMS (Red-White-Blue) – Monthly On Call Rotation											
JAN	FEB	MAR	APR	MAY	JUN	JUL	AUG	SEP	OCT	NOV	DEC
WEST				CENTRAL				EAST			
Team	Status	Team	Status	Team	Status	Team	Status	Team	Status	Team	Status
CA-TF1	Available	AZ-TF1	Available	FL-TF1	Available						
CA-TF2	Available	CO-TF1	Available	FL-TF2	Available						
CA-TF3	Available	IN-TF1	Available	MA-TF1	Available						
CA-TF4	Available	MO-TF1	Available	MD-TF1	Available						
CA-TF5	Available	NE-TF1	Available	NY-TF1	Available						
CA-TF6	Available	NM-TF1	Non-operational	PA-TF1	Conditionally Available						
CA-TF7	Available	NV-TF1	Conditionally Available	VA-TF1	Available						
CA-TF8	Available	TN-TF1	Conditionally Available	VA-TF2	Available						
WA-TF1	Available	TX-TF1	Available	OH-TF1	Available						
		UT-TF1	Available								

= Available/Mission Capable     
  = Assigned/Deployed  
 = Available/Partially Mission Capable     
  = Out-of-Service

# RRCC / Regional Watch Center Status



Region	RRCC	Regional Watch Center
I	Watch/Steady State	Maynard MOC (24/7)
II	Watch/Steady State	24/7
III	Watch/Steady State	24/7
IV	Level II (Partial Activation)	24/7
V	Watch/Steady State	24/7
VI	Level II (Partial Activation)	Denton MOC (24/7)
VII	Level III (Monitoring 24/7)	24/7
VIII	Watch/Steady State	Denver MOC (24/7)
IX	Watch/Steady State	24/7
X	Watch/Steady State	Bothell MOC (24/7)

# National Team Status



Team/Status	Current Location	Remarks
National Watch Center	Washington, DC	Enhanced Watch
NRCC	Washington, DC	Level II
HLT	Miami, FL	Activated
DEST	Washington, DC	Not Activated
Mission Capable	Partially Mission Capable	Not Mission Capable

# TED-EX Exercise Highlights (30 day forecast)

Date	Exercise	Event	Capability Focus	Target Audience/ FEMA Participation	Location
8/22	DHS FMD TTX	FPC	Animal Disease Emergency	Interagency	TBD
8/30	NLE 12	FEMA AAC	Multiple	All FEMA	FEMA HQ, Washington, DC
9/6	DHS FMD TTX	TTX	Animal Disease Emergency	Interagency	TBD
9/17-18	NLE 12	AAM	Multiple	Interagency	Kellogg Conference Hotel Gallaudet Washington, DC
9/18-20	Ardent Sentry 13	Post IPC-IPR	Multiple	Interagency	Colorado Springs
9/26-27	Amber Waves	Workshop	Multiple	IA/KS/MO State Departments of Health, Agriculture and Natural Resources; EPA; A-Team; FDA; FEMA; USDA; DOE/NNSA	Kansas City  55



# FEMA

**FEMA's mission is to support our citizens and first responders to ensure that as a nation we work together to build, sustain, and improve our capability to prepare for, protect against, respond to, recover from, and mitigate all hazards.**