



# **FEMA**

## **Daily Operations Briefing**

**July 1, 2012**

**As of 8:30 a.m. EDT**

# Significant Activity: June 30 – July 1

## **Significant Events:**

- Severe weather recovery– Midwest/Atlantic Storm
- Wildfires – CO, UT, & MT

## **Tropical Activity:**

- Atlantic – Tropical cyclone activity not expected next 48 hours
- Eastern Pacific – Tropical cyclone activity not expected next 48 hours
- Central Pacific – No tropical cyclones expected through Monday night

## **Significant Weather:**

- Severe thunderstorms possible – Upper Midwest to Central Appalachians and coastal plain/tidewater region of DelMarVa & Carolinas; Rockies & High Plains
- Extreme & record breaking heat expanding into southern third of country
- Red Flag Warnings: UT, CO, ID, MT, WY, SD & ND
- Critical Fire Weather – None
- Space Weather: Past 24 hours minor; no activity expected next 24 hours

**Earthquake Activity:** No significant activity

**Disaster Declaration Activity:** Emergency Declarations for WV & OH

# Current Situation



- Slight risk of severe thunderstorms through July 1; damaging winds that complicate power restoration activities are primary concern
- Widespread power outages that affect basic services (i.e., water, communications) and severe heat created potential for life-threatening conditions
- Priority attention given to assess storm damage, identify and resource power/fuel needs for critical facilities (hospitals/nursing homes/water systems), and power restoration.
- 3 million customers without power; down from 3.6 million; Power restoration could take 5-7 days
- Major retailers Sears, PetSmart and Macy's reporting a total of 70 store closures due to power outages
- Emergency services coordinator for Virginia reporting areas of Northern Virginia without 911 service.
- Wireless service in Indiana, Ohio, and the National Capital Region spotty but improving, while West Virginia getting worse due to alternate power failures (generator/battery). Full power restoration of all areas affected by storm will take 4-7 days.
- Fatalities: Maryland (2); Virginia (6 fatalities and 11 injuries).

# Hot Issues



- Determine status of resource needs to support community service facilities.
- Identification of resources needed to support hospitals, nursing homes and other critical facilities
- Commodities and Generators en route to OH and WV, Staging Operations (Locations and Staffing)
- Identification of major infrastructure and retailers without power, including cascading issues (communication, water, hospitals, etc.)
- Functional Needs support requirements
- Coordinating for cross border clearance for Canadian line repair teams

# Declarations



## **Emergency Declarations:**

- West Virginia received emergency declaration FEMA-3345-EM for all 55 counties
- Ohio received emergency declaration FEMA-3346-EM for all 88 counties

## **State Declarations:**

- VA Governor declared State of Emergency on June 30, 2012
- MD declared State of Emergency on June 30, 2012
- DC Mayor declared State of Emergency on June 30, 2012

# Location of Shelters and Cooling Stations



FEMA

**Legend**

**FEMA NSS - Cooling Centers**  
Cooling Ctr

**FEMA NSS - Open Shelters**  
FEMA NSS - Open Shelters

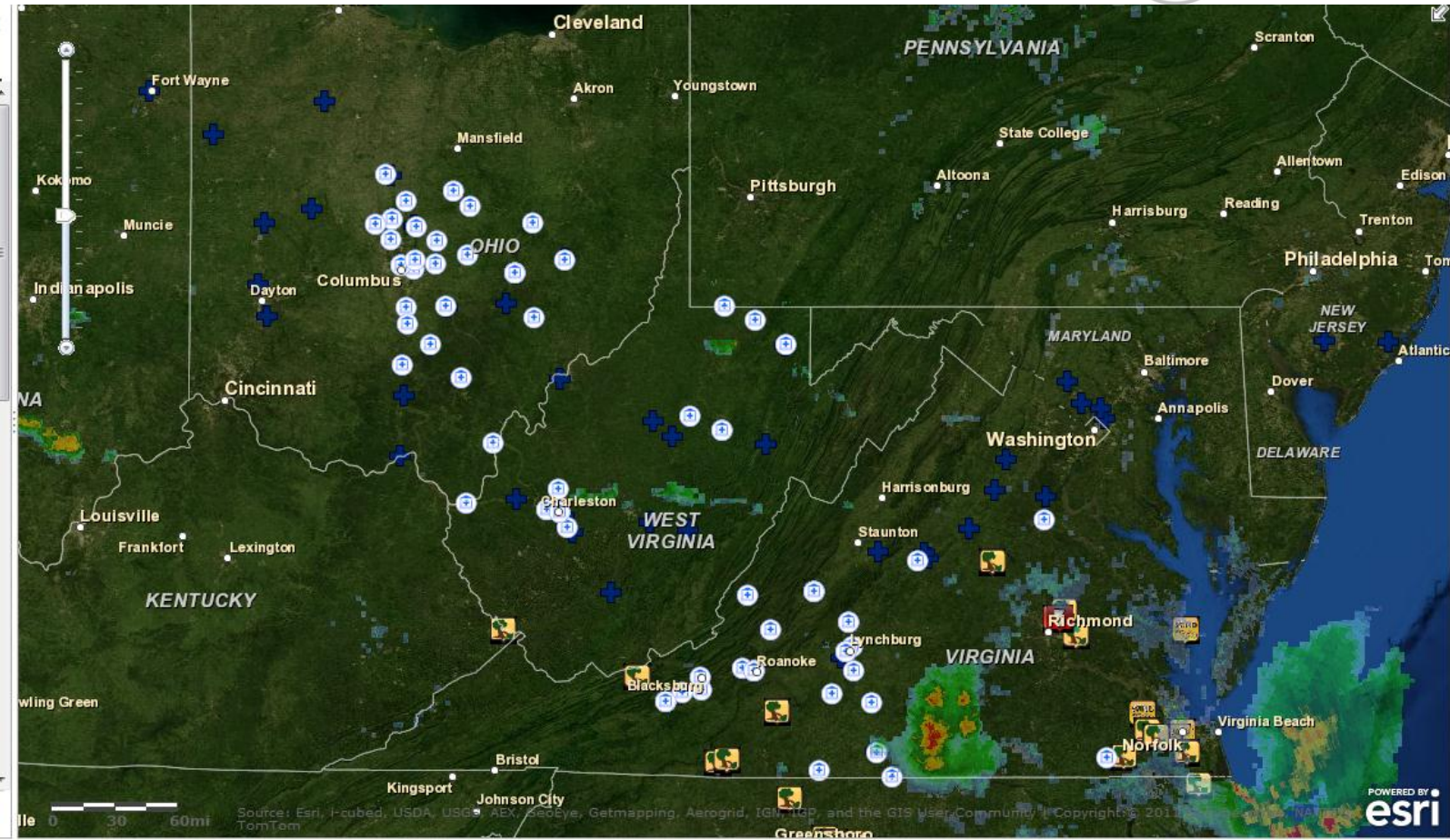
**LSR (FEMA Re-Hosted Service)**

Local Storm Reports (last 24 hours)

Wind Weather Reports

- TORNADO
- FUNNEL CLOUD
- DOWN BURST
- WALL CLOUD
- TSTM WND DMG
- MARINE TSTM WIND
- NON-TSTM WND DMG
- NON-TSTM WND GST
- TSTM WND GST
- WATER SPOUT

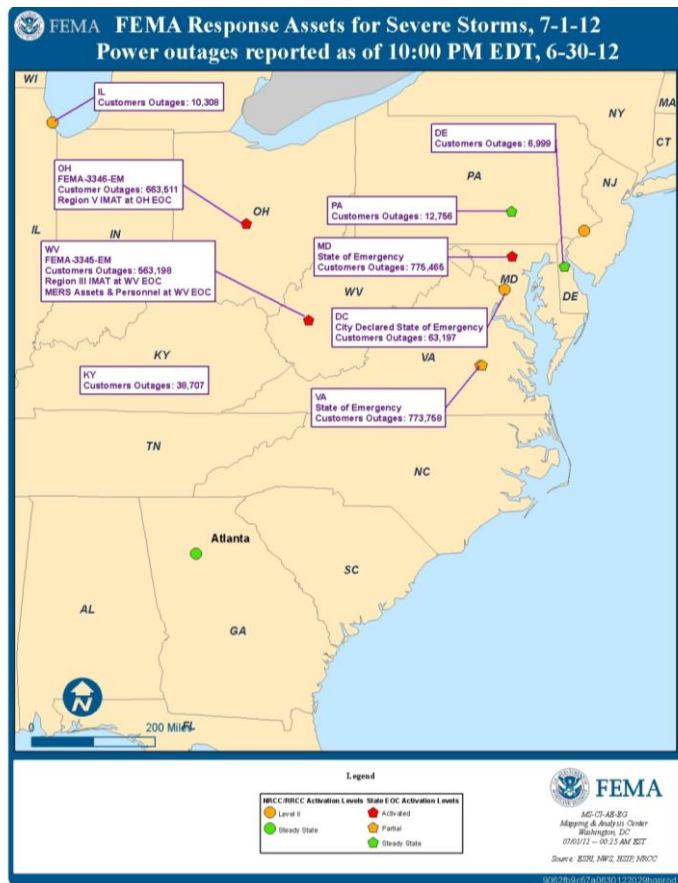
[Esri.com](#) · [Terms of Use](#) · [Privacy](#) · [Contact Us](#) · [Report Abuse](#)



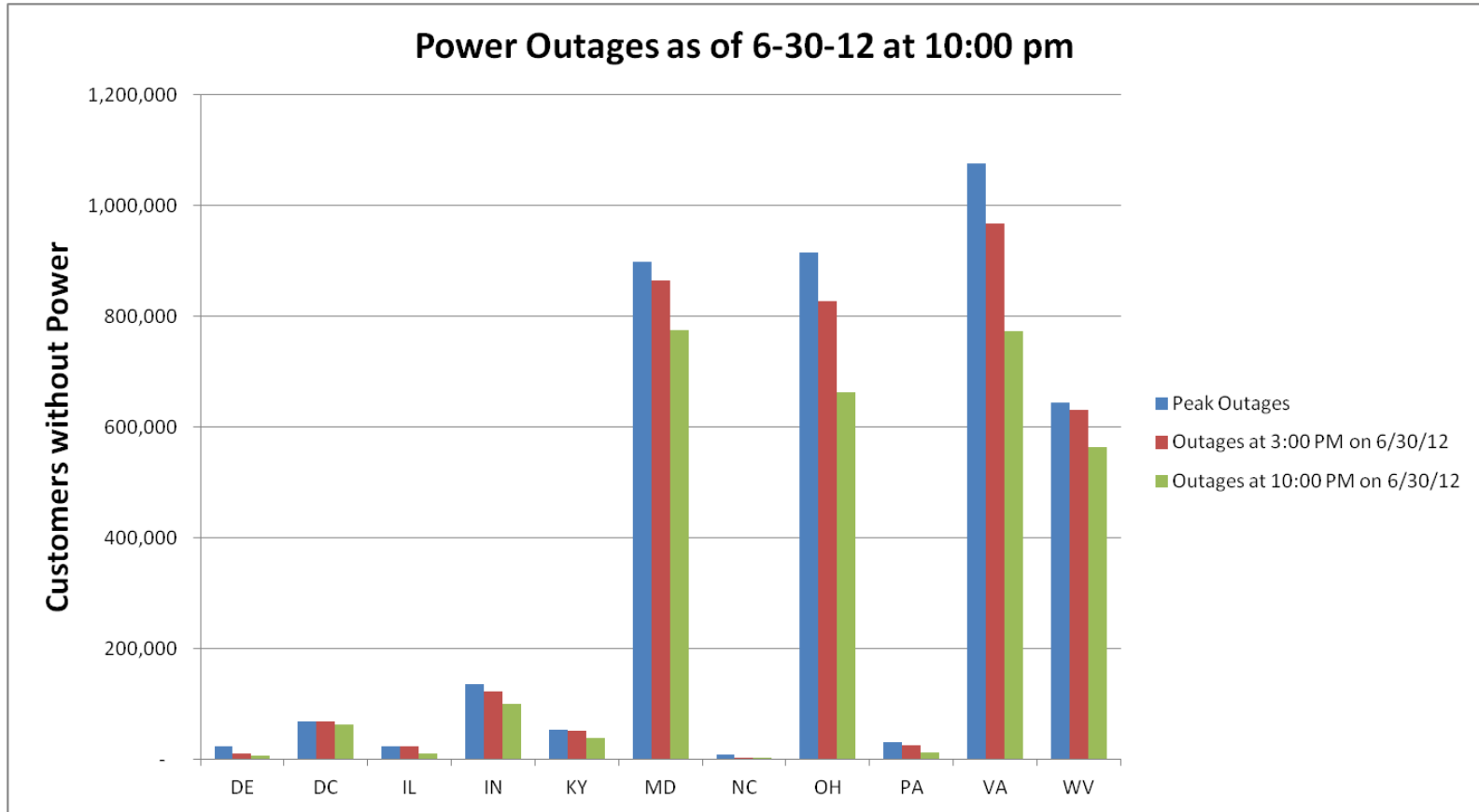
# Response Assets and Power Outages



FEMA

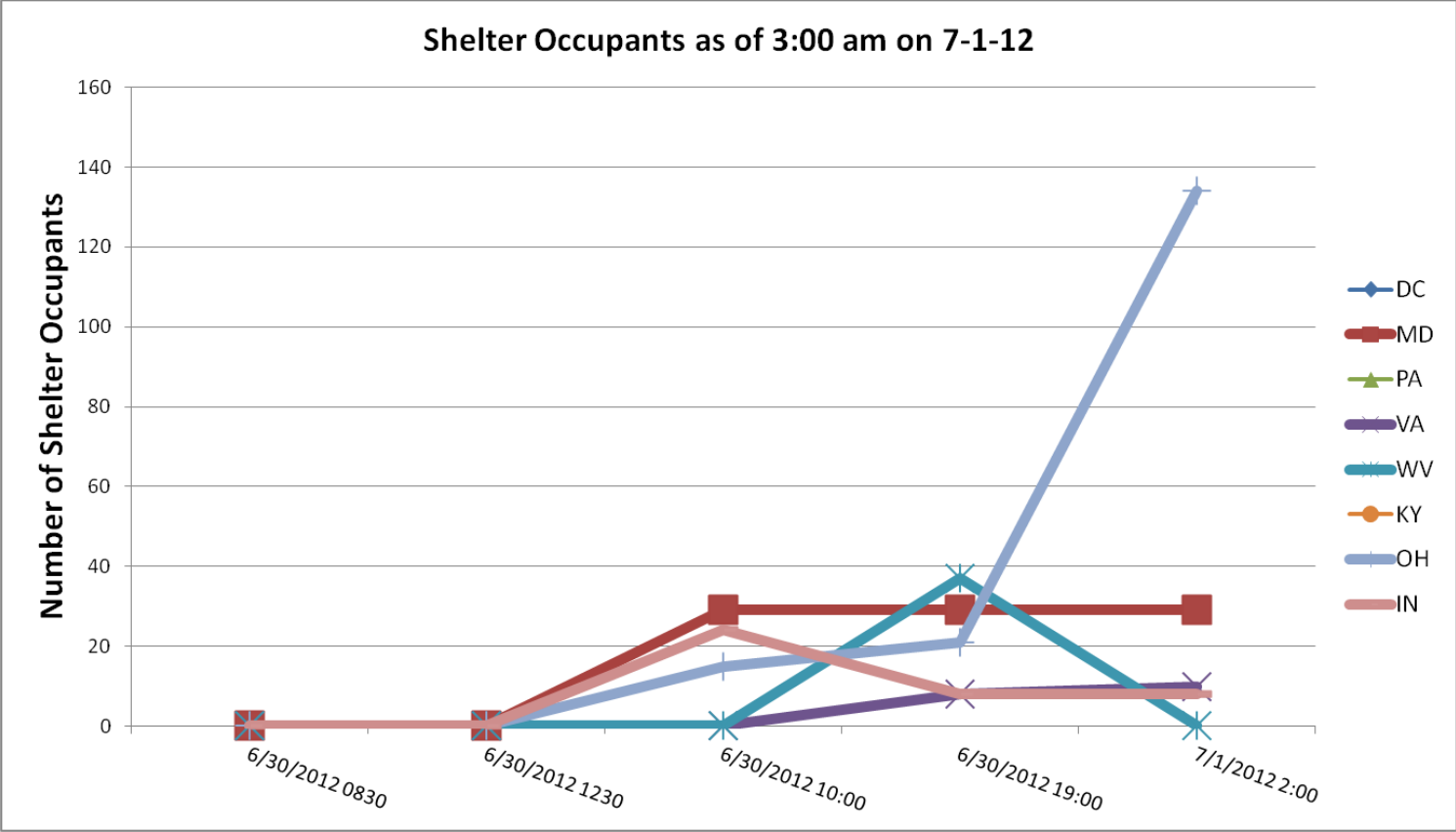


# Power Outages by State





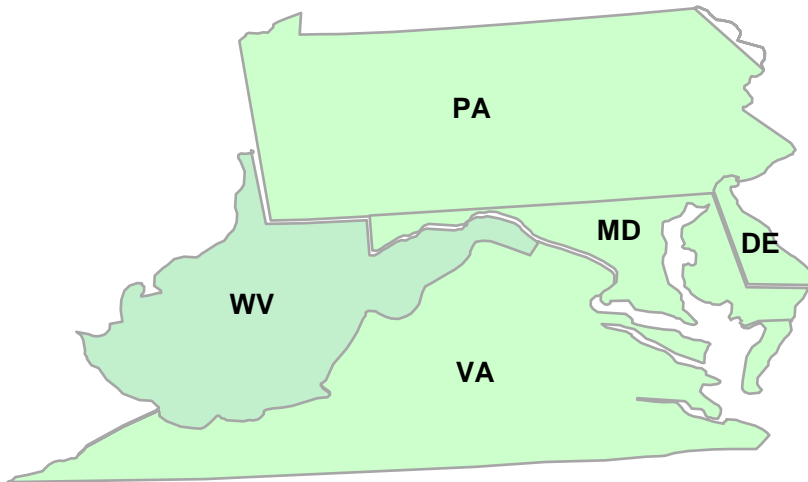
# Shelter Occupancy by State



# Region III

## Region III

- RRCC is activated at Level II
- ESFs 2,3, 6-8, 12, & DCE
- RIII IMAT I at WV EOC
- MERS Assets and Personnel at WV EOC



## **State/Commonwealth Response**

### Delaware

- EOC normal operations
- 6,999 customers without power

### District of Columbia

- Mayor declared state of emergency
- DC EOC at Level 2
- 63,197 customers without power

### Maryland

- MD EOC fully activated
- 775,465 customers without power
- 1 shelter with 34 occupants

### Pennsylvania

- EOC normal operations
- 12,756 customers without power

### Virginia:

- Governor declared state of emergency
- VA EOC fully activated
- 773,758 customers without power
- 1 shelter with 10 occupants

### West Virginia:

- Emergency declaration has been approved
- WV EOC fully activated
- 563,198 customers without power
- 8 shelters with 187 occupants

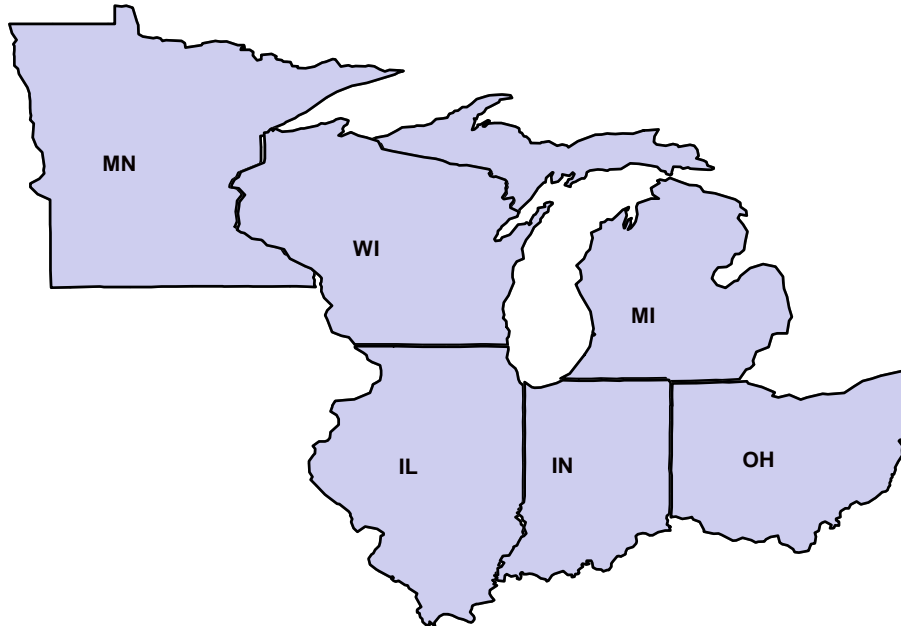
# Region V



FEMA

## Region V

- RRCC activated at Level II
- R5 IMAT has begun arriving at the Ohio EOC; all will be in place by 1200, 1 July



## State Response

### Illinois

- Power: 10,308 customers without power

### Indiana

- No requests for state or Federal assistance
- IN EOC not activated
- Power: 99,528 customers without power
- Shelters: 1 open with 8 occupants

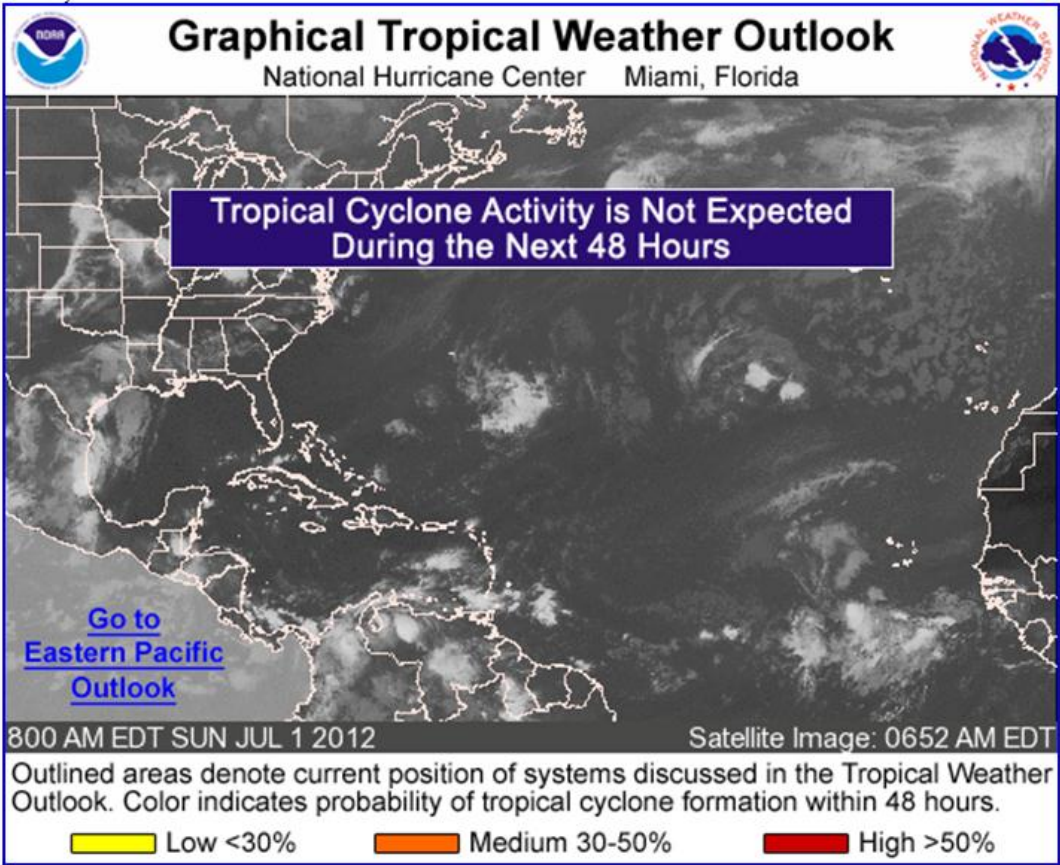
### Ohio

- Emergency Declaration has been approved
- OH EOC fully activated
- Minimal requests for state assistance have been received; no requests for Federal assistance
- State reporting potential unmet needs for food, water, and power generators
- Power: 663,511 customers without power; 75 of 88 counties reporting power outages
- Shelters: 14 open with 145 occupants

# Atlantic – Tropical Outlook



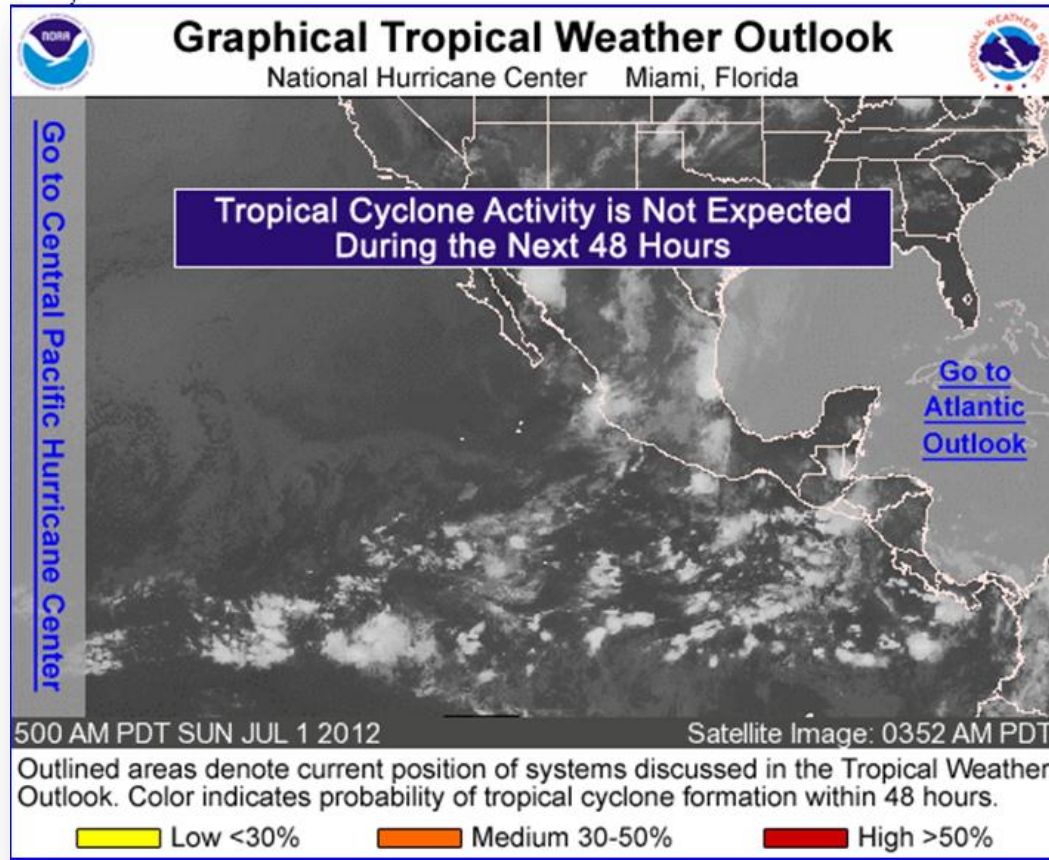
FEMA



# Eastern Pacific – Tropical Outlook



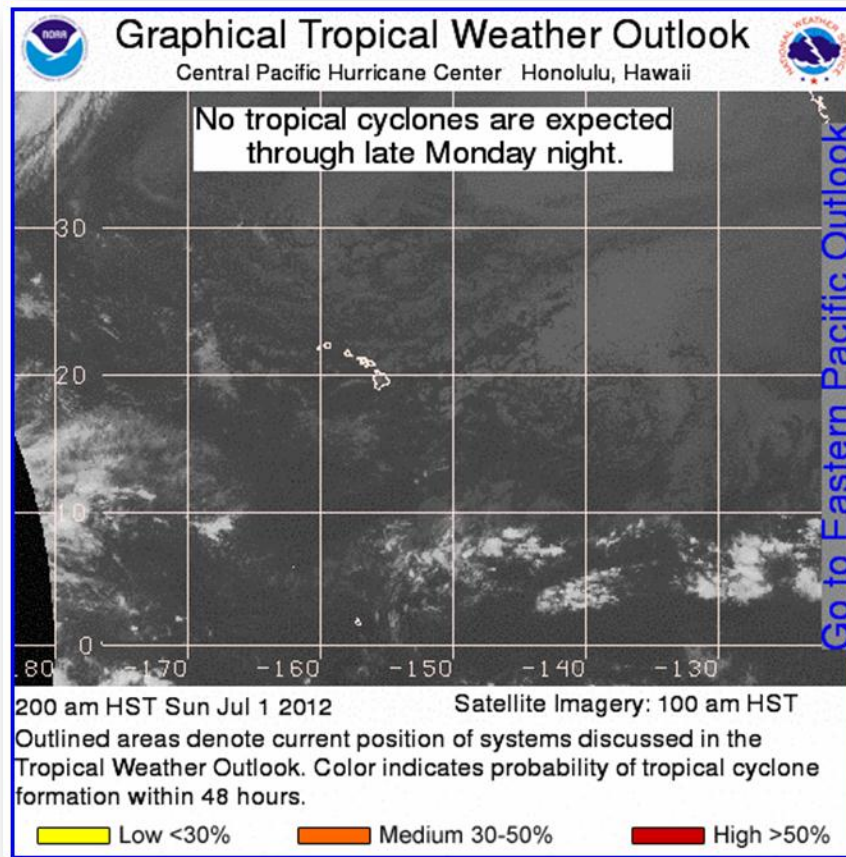
FEMA



# Central Pacific – Tropical Outlook



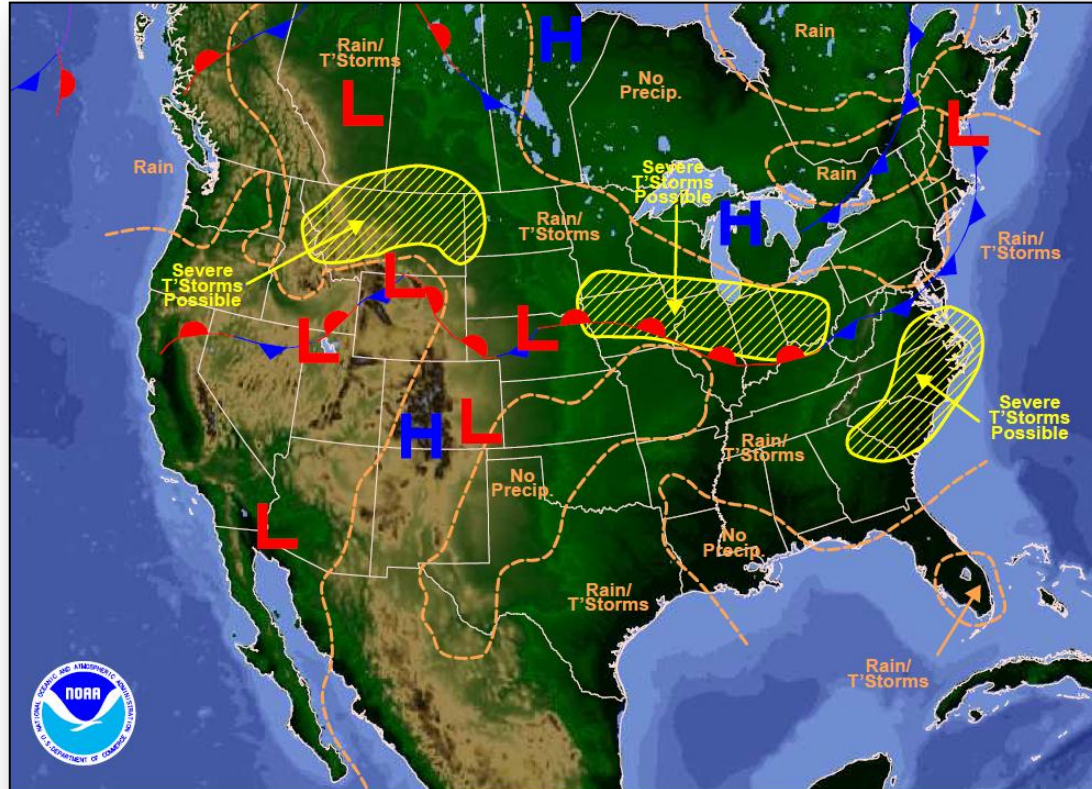
FEMA



# National Weather Forecast



FEMA



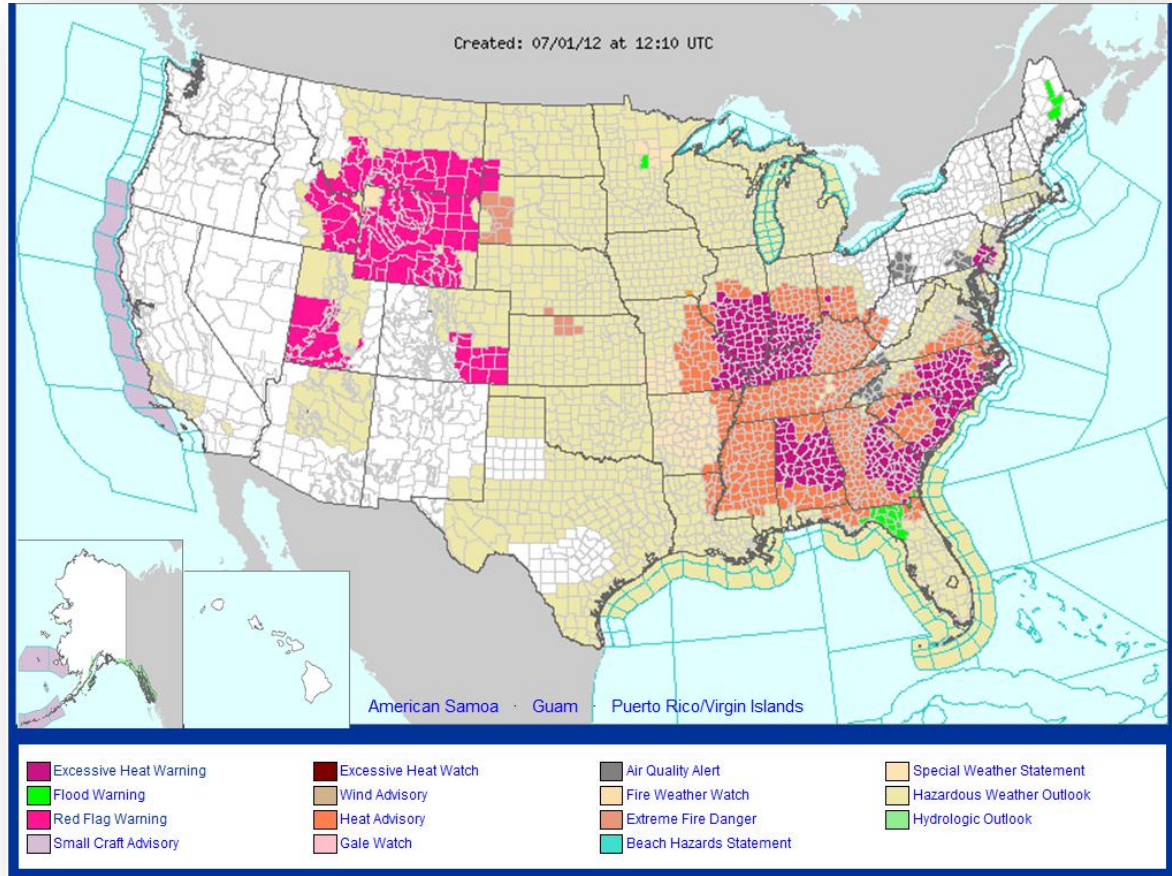
Weather Forecast for Sun, Jul 01, 2012, issued 4:31 AM EDT  
DOC/NOAA/NWS/NCEP/Hydrometeorological Prediction Center  
Prepared by Ryan based on HPC, SPC, and NHC forecasts



# Active Watches/Warnings



FEMA

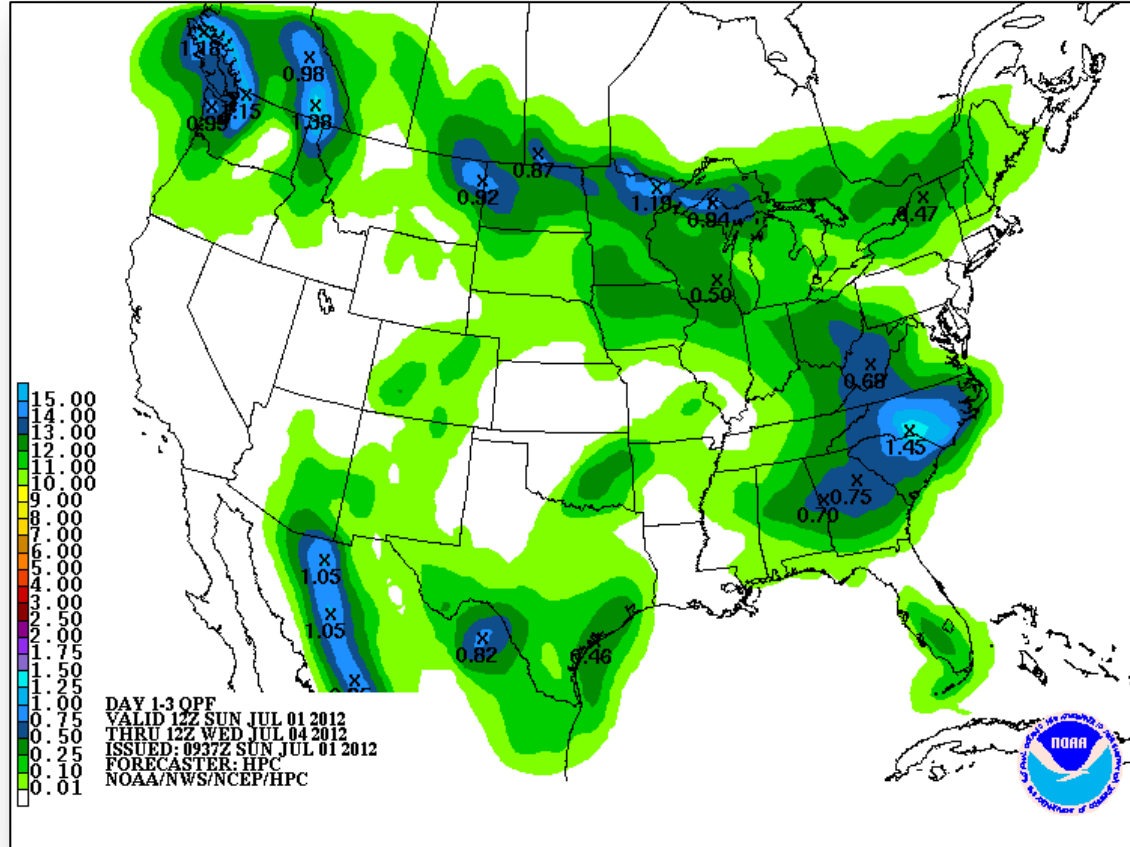




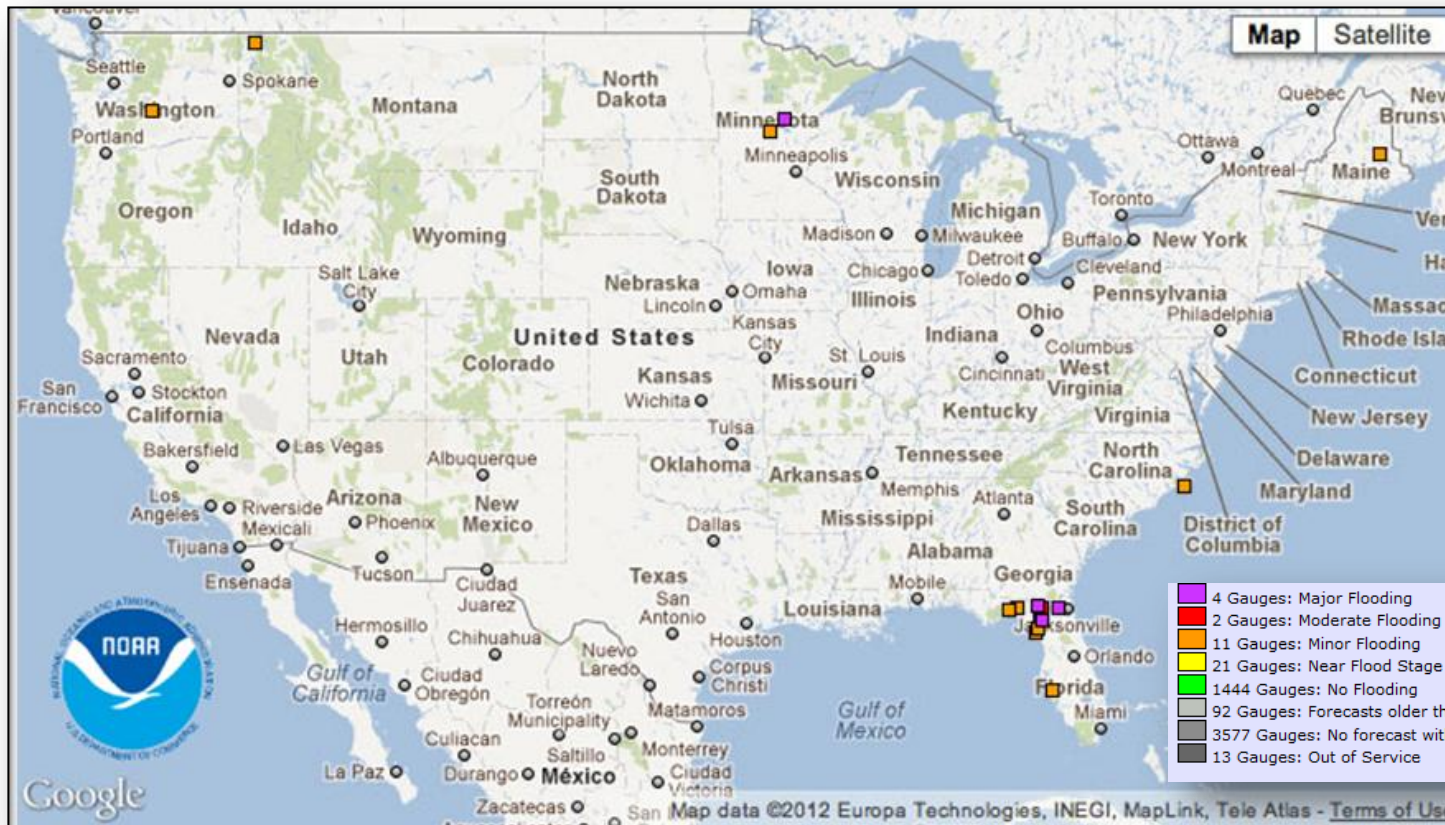
# Precipitation Forecast 1 – 3 Day



FEMA



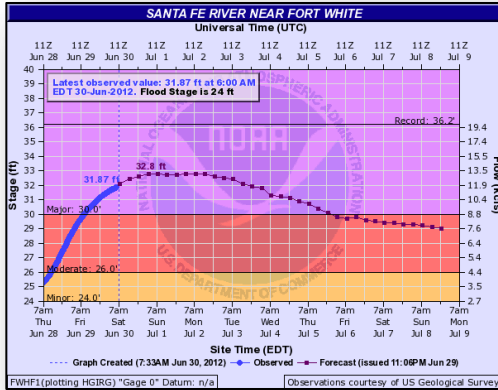
# River Flood Outlook – 7 Day



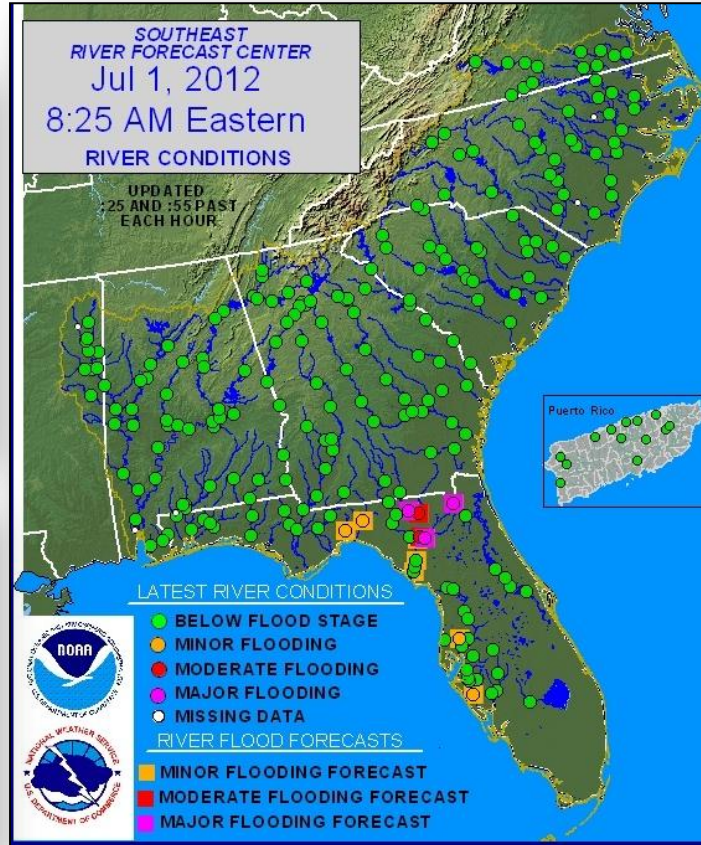
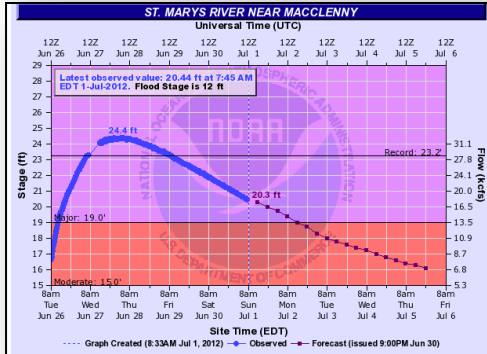
# Forecast River Flooding – Florida



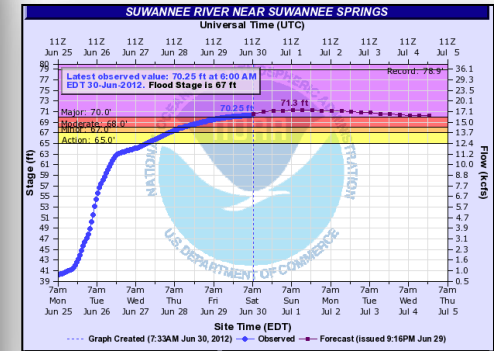
**Santa Fe River near Ft. White Jacksonville**



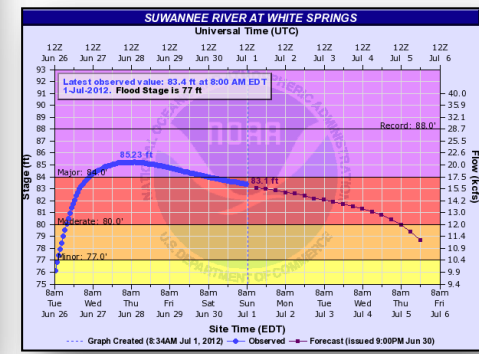
**St. Mary's River near MacClenny**



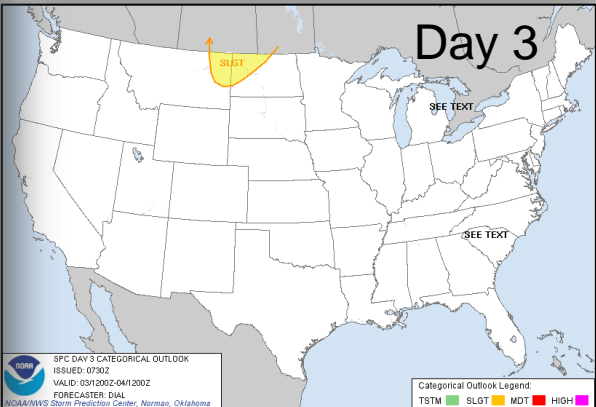
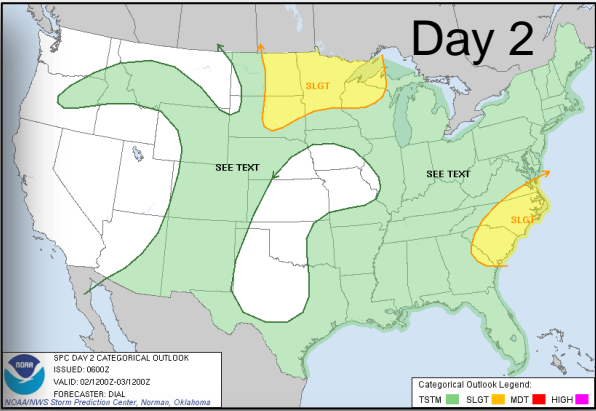
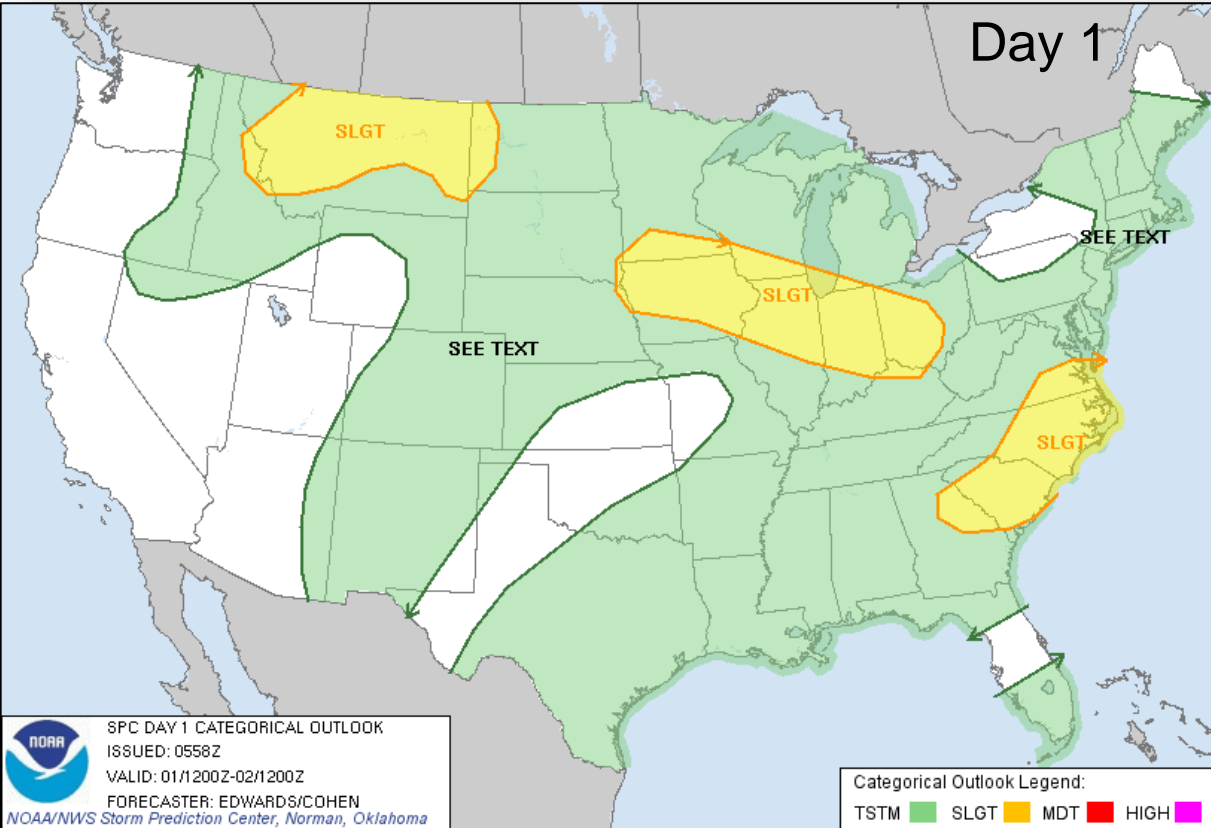
**Suwannee River near Suwannee Springs (NW of Lake City in northern FL)**



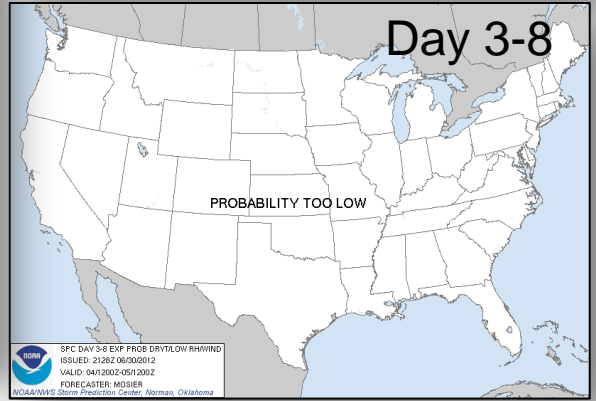
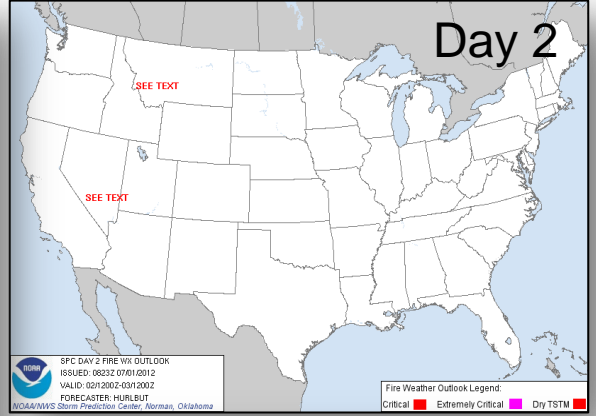
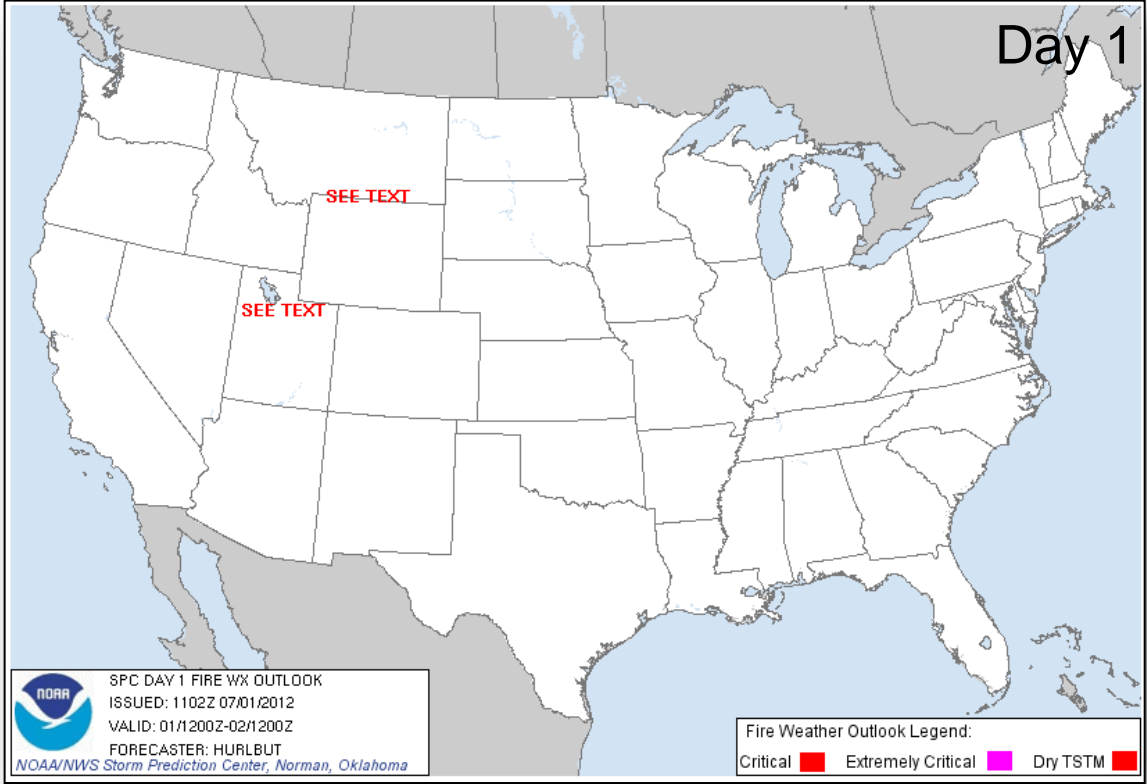
**Suwannee River near White Springs (NW of Lake City in northern FL)**



# Convective Outlook Days 1 - 3



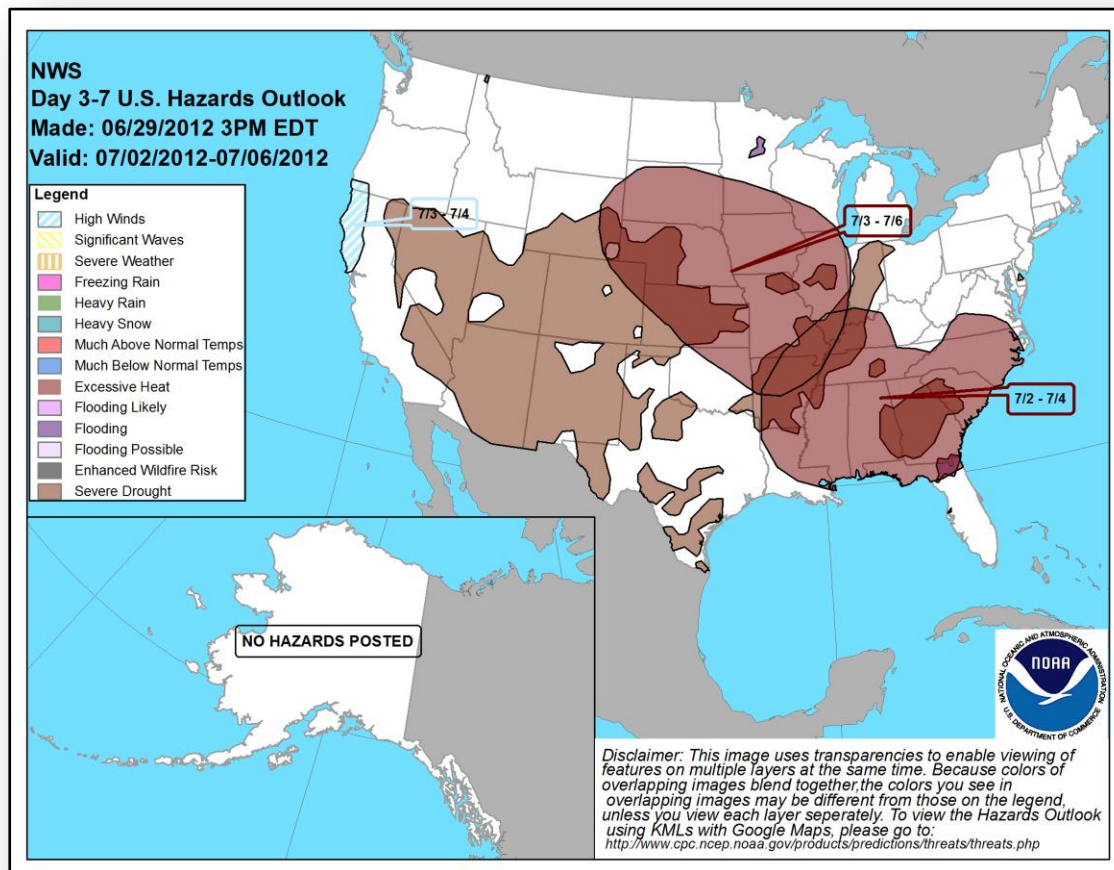
# Critical Fire Weather Areas Days 1 - 8



# Hazard Outlook: July 2 - 6

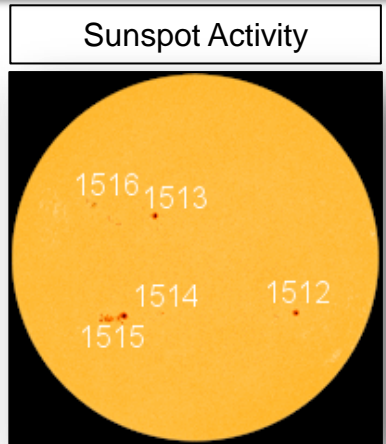
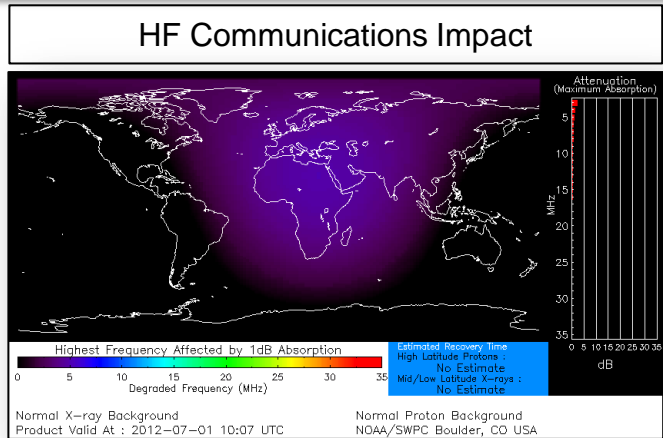


FEMA

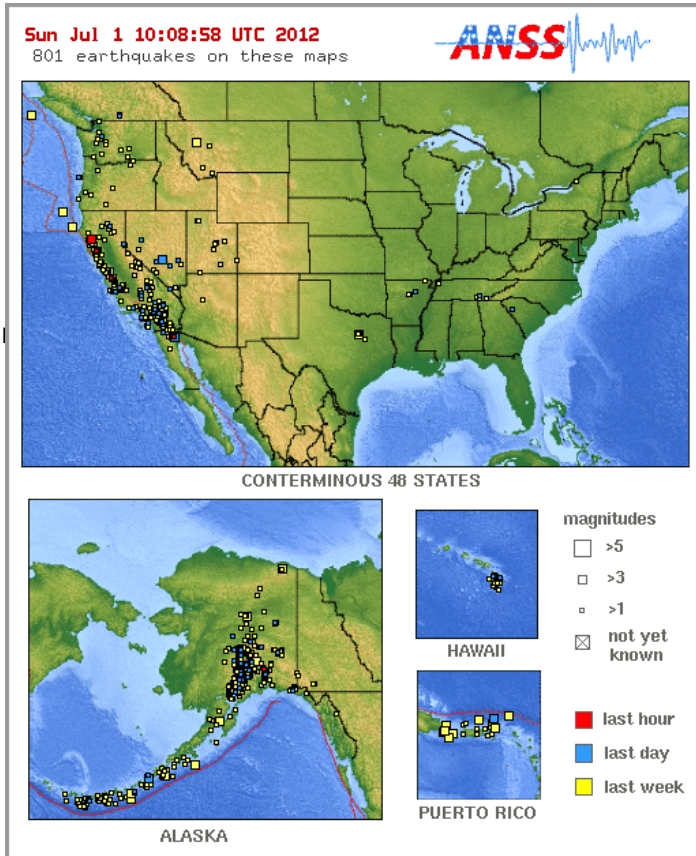


# Space Weather

NOAA Scales Activity Range 1 (minor) to 5 (extreme)	Past 24 Hours	Current	Next 24 Hours
Geomagnetic Storms	None	None	None
Solar Radiation Storms	None	None	None
Radio Blackouts	<b>R1</b>	None	None
Space Weather	Minor	None	Minor



# Significant Earthquake Activity



## U.S. Activity

- No significant activity

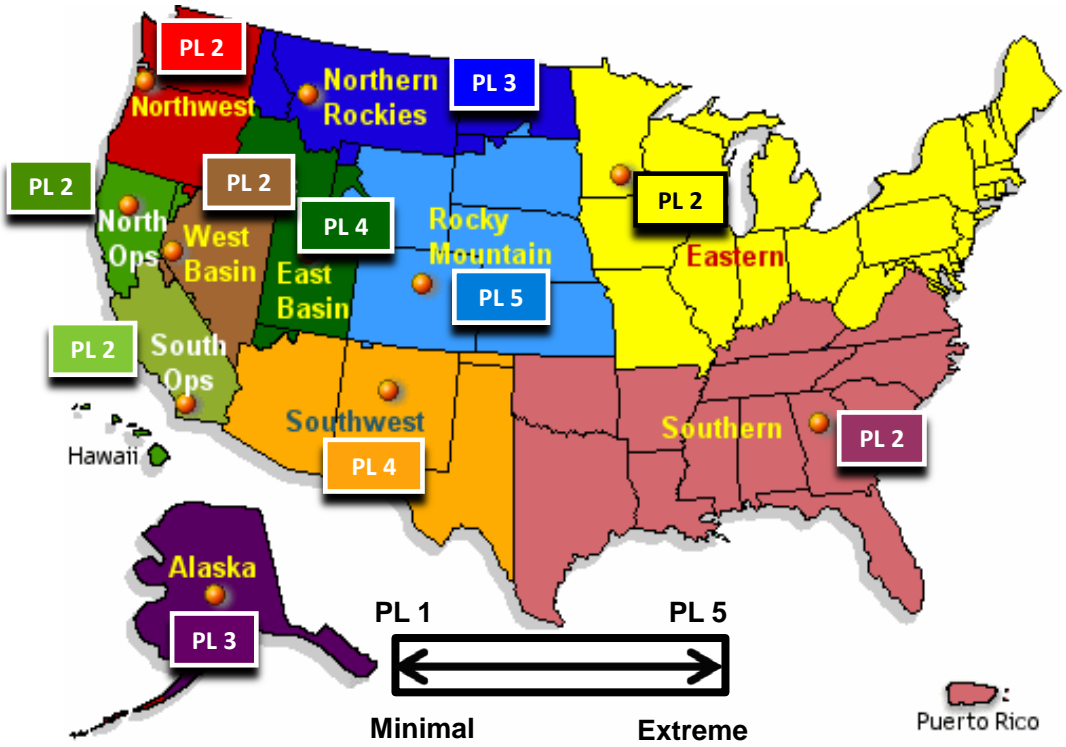


# U.S. Wildland Fire Preparedness Levels



## National Preparedness Level: 4

Three or more Geographic Areas are experiencing incidents requiring Type 1 and 2 IMTS. Competition exists between Geographic Areas. Nationally, 60 percent of Type 1 and 2 IMTs and crews are committed.

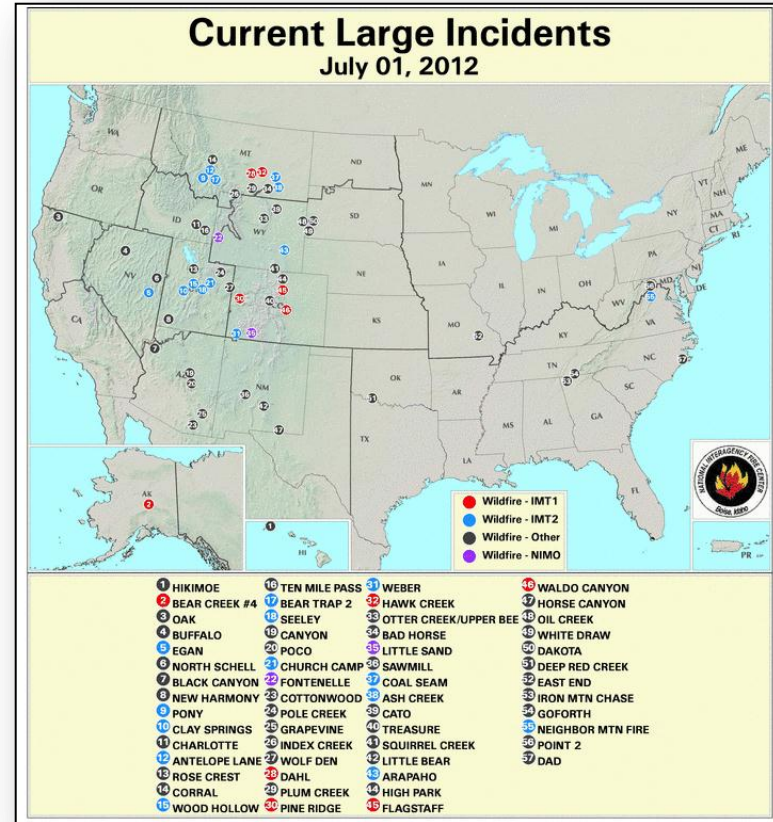


As of July 1, 2012

# National Fire Activity

## July 1, 2012:

- National Preparedness Level: 4
- Initial Attack Activity: Light (96)
- New Large Fires: 7
- Large Fires Contained: 7
- Uncontained Large Fires: 49
- NIMOs Committed: 2
- Type 1 IMT(s) Committed: 5
- Type 2 IMT(s) Committed: 13
- States Affected: CO, WY, SD, UT, ID, MT, AZ, NM, VA, NC, TN, OK, AK, NY, NV, CA, HI & MO

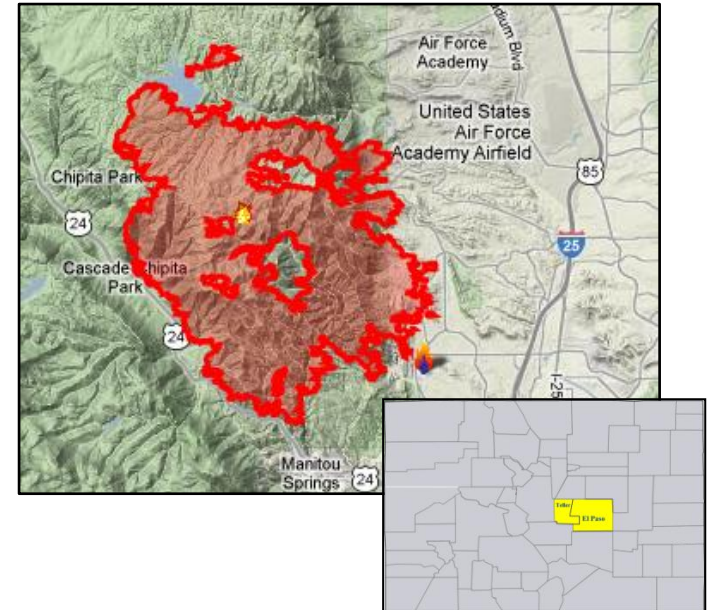


# Waldo Canyon Fire, CO



Fire Name	Location	Acres burned	% Contained	Est. Full Containment	FMAG	Structures Lost / Threatened	Fatalities / Injuries
Waldo	El Paso & Teller Counties, CO	17,659 (+586)	45% (+20)	July 16, 2012	FEMA-2984-FM-CO June 24, 2012	346 homes lost & 24 damaged/ 20,085 homes & 175 (+15) commercial structures	2 / 1

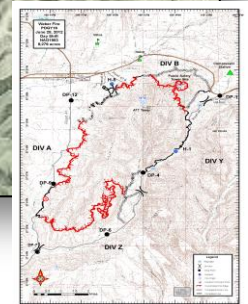
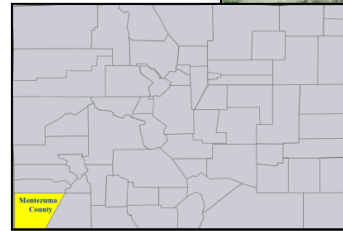
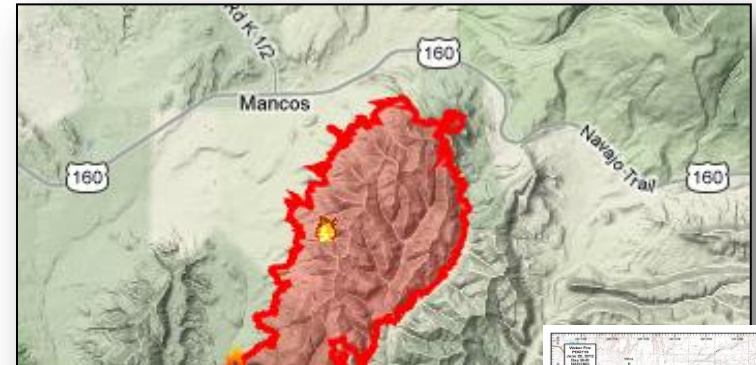
- Evacuations lifted for portions of Colorado Springs June 29
- ▲ Mandatory & voluntary evacuations continue for El Paso County and portions of in Colorado Springs
- Pre-evacuation notices for residents of Teller County
- ▲ 5 shelters open with 139 (-82) occupants
- ▲ 1,534 (+247) personnel including Type 1 IMT
- All 8 MAFFS C-130 aircraft activated & supporting firefight from Peterson AFB, Colorado Springs, CO



# Weber Fire, CO

Fire Name	Location	Acres burned	% Contained	Est. Full Containment	FMAG	Structures Lost / Threatened	Fatalities / Injuries
Weber	Montezuma County, CO	10,133 (+854)	65% (+10)	July 5, 2012	FEMA-2985-FM-CO June 24, 2012	0 / 152 (+77) homes, 25 commercial properties & other structures threatened	0 / 0

- Mandatory and voluntary evacuations remain in effect for 150 residents
- Evacuees allowed to return to their homes for short periods with law enforcement escort
- ▲ 663 (+4) personnel including Type 2 IMT

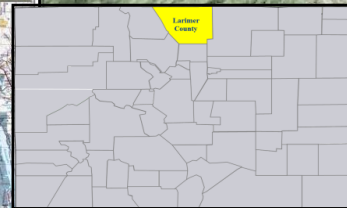
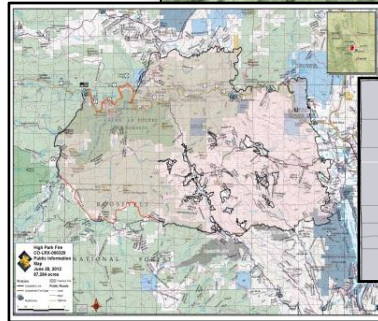
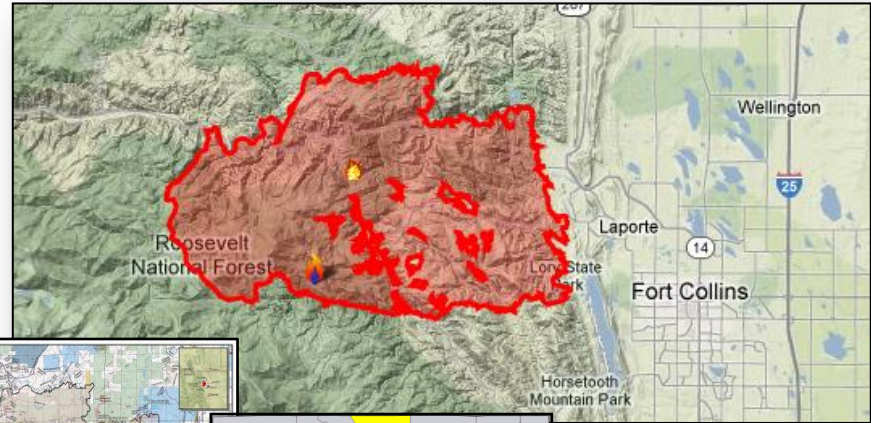


# High Park Fire, CO - FINAL



Fire Name	Location	Acres burned	% Contained	Est. Full Containment	FMAG	Structures Lost / Threatened	Fatalities / Injuries
High Park	Larimer County, CO	87,284 (no change)	100%	July 1	FEMA-2980-FM-CO June 9, 2012	259 homes & 112 other structures / 1,969	1 / 3

- All pre-evacuation notices lifted
- Firefighters coordinating assessments with local authorities for re-entry to evacuated subdivisions
- Most evacuations lifted
- Full evacuations remain in effect for some areas
- All shelters closed
- High Park Fire Disaster Recovery Center open during the day
- ▲ 686 (-439) personnel including Type 1 IMT
- ▲ Type 3 IMT to assume command July 1

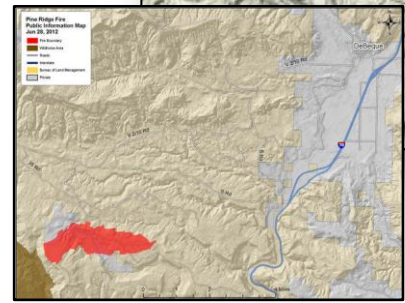
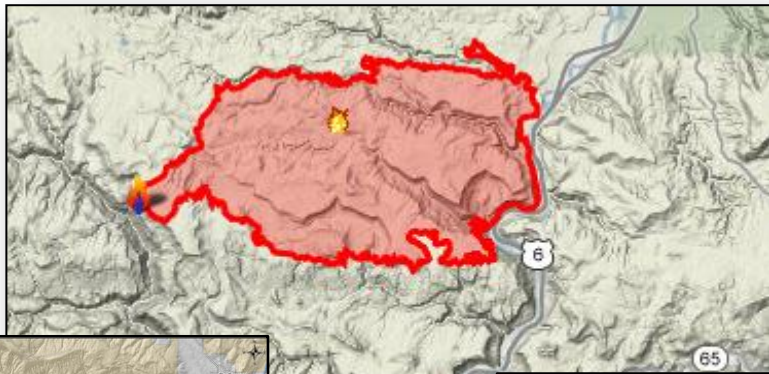




# Pine Ridge Fire, CO

Fire Name	Location	Acres burned	% Contained	Est. Full Containment	FMAG	Structures Lost / Threatened	Fatalities / Injuries
Pine Ridge Mesa	Mesa County, CO	12,430 (+383)	10%	Unknown	None Requested	0 / 7	0 / 0

- ▲ 3 unoccupied tents and campers destroyed
- Threatening 7 structures, oil & gas lines in Bookcliffs & DeBeque. 35 oil & gas wells in the area
- ▲ No evacuations in effect; no shelters open
- ▲ I-70 re-opened
- ▲ 321 (+171) personnel
- ▲ Type 1 IMT assumed command June 30



# Rose Crest Fire, UT



Fire Name	Location	Acres burned	% Contained	Est. Full Containment	FMAG	Structures Lost / Threatened	Fatalities / Injuries
Rose Crest	Salt Lake County, UT	611 (+261)	60% (+55)	Unknown	June 29, 2012	4 / 150 homes & military installation	0 / 0

- Fire began June 29
- Burning on Federal, State & private land burned
- 150 homes in Herrmann City (pop. 20,000) threatened
- Military installation & residential subdivision threatened
- ▲ All evacuations lifted
- ▲ 1 shelter open with 29 (-66) occupants
- Salt Lake County declared State of Emergency June 29
- ▲ 300 personnel

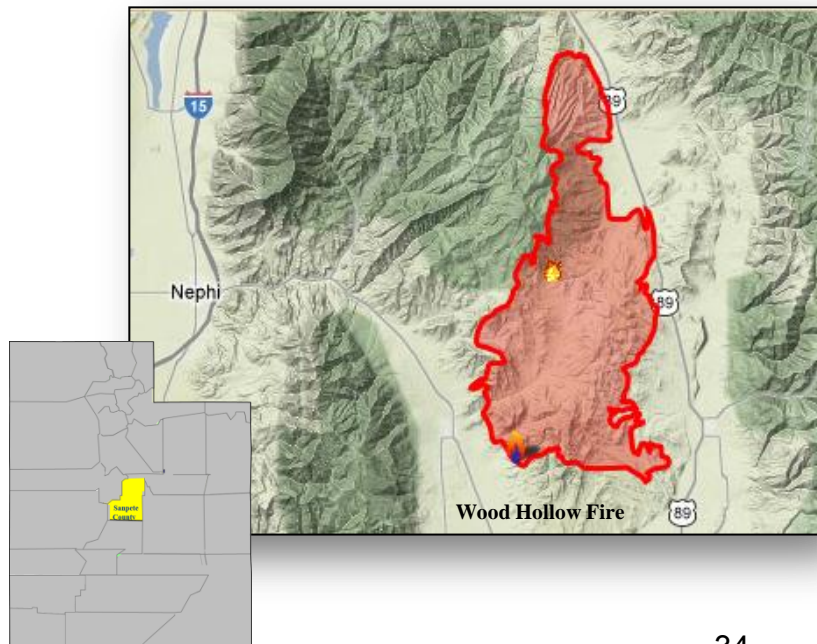




# Wood Hollow Fire, UT

Fire Name	Location	Acres burned	% Contained	Est. Full Containment	FMAG	Structures Lost / Threatened	Fatalities / Injuries
Wood Hollow	Sanpete County, UT	47,295 (+893)	65% (+30)	June 30, 2012	FEMA-2986-FM-UT June 24, 2012	160 structures lost /300 homes threatened	1 / 0

- ▲ Remaining evacuations for 500 residents expected to end June 30
- 1 confirmed civilian fatality, no injuries
- 52 primary residences & 108 outbuildings lost; 300 homes threatened
- ▲ 866 (-52) personnel including Type 2 IMT



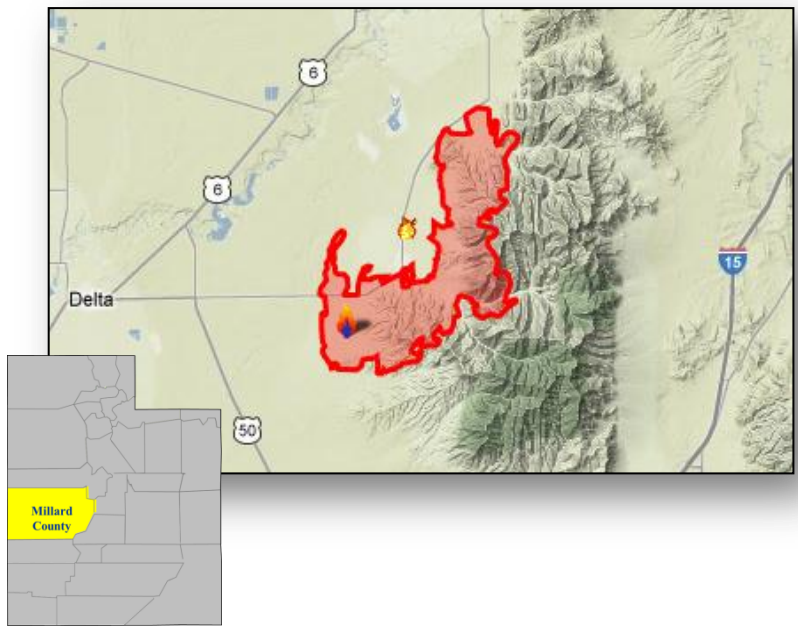




# Clay Springs Fire, UT

Fire Name	Location	Acres burned	% Contained	Est. Full Containment	FMAG	Structures Lost / Threatened	Fatalities / Injuries
Clay Springs	Millard & Juab counties, UT	87,261 (+18,592)	15% (no change)	Unknown	FEMA-2990-FM-UT June 27, 2012	4 / 100 homes & 25 outbuildings	0/2

- 4 miles south of Oak City, UT
- One summer home & 3 other structures destroyed
- All evacuations lifted
- ▲ 449 (+249) personnel including Type 2 IMT

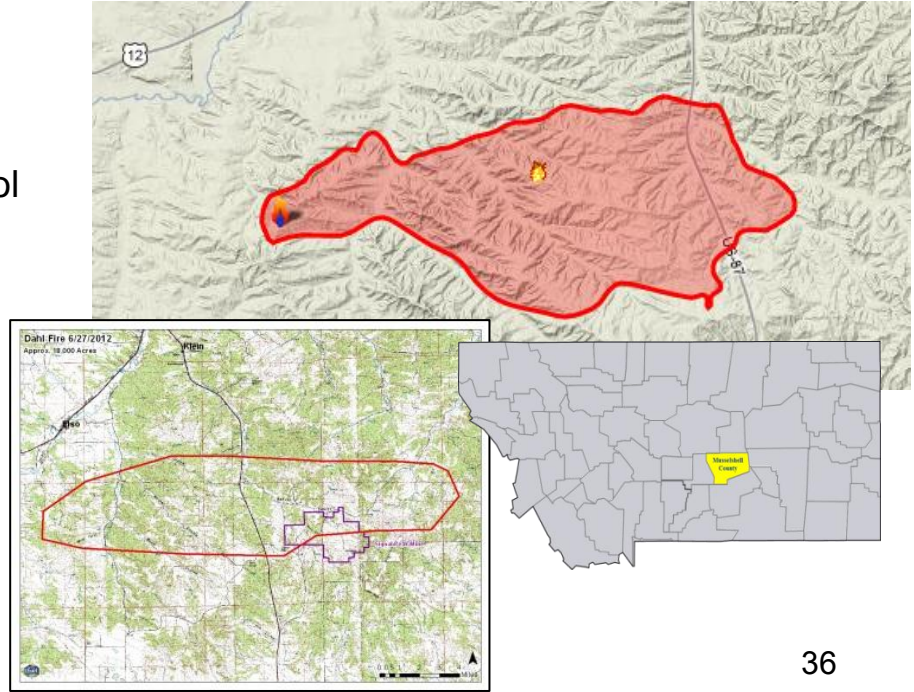


# Dahl Fire, MT



Fire Name	Location	Acres burned	% Contained	Est. Full Containment	FMAG	Structures Lost / Threatened	Fatalities / Injuries
Dahl	Musselshell County, MT	22,045 (no change)	65% (+20)	Unknown	FEMA-FM-2988-MT June 26, 2012	73 (+9) structures lost / 95-150 threatened	0 / 0

- 12 miles east of Roundup, MT
- ▲ 73 structures (includes 32 homes & 1 commercial building) destroyed
- 95 - 150 homes, Signal Peal Coal Mine, a local school & fire station threatened
- Mandatory evacuations reduced to voluntary evacuations
- Residents only being allowed back to their homes
- ▲ 1 shelter open with no occupants
- ▲ Temporary flight restrictions to 10,000 feet
- ▲ 347 (+119) personnel including Type 1 IMT

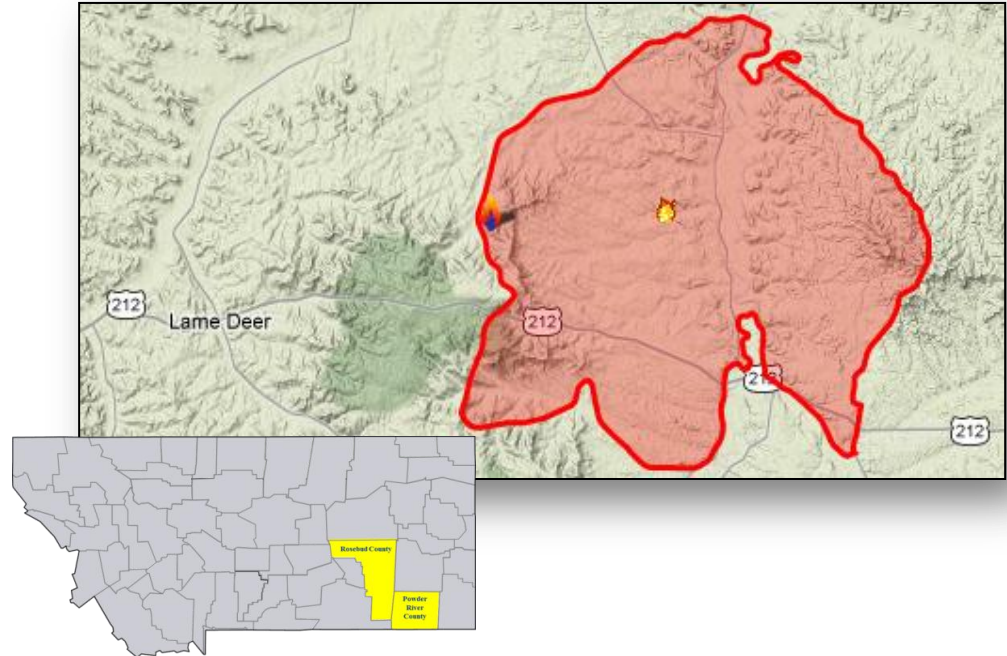


# Ash Creek Complex, MT



Fire Name	Location	Acres burned	% Contained	Est. Full Containment	FMAG	Structures Lost / Threatened	Fatalities / Injuries
Ash Creek	Powder River & Rosebud Counties	157,527 (+46,827)	25% (+20)	Unknown	FEMA-2989-FM-MT June 27, 2012	0 / 359	0 / 0

- 5 miles east of Lame Deer, MT on Northern Cheyenne Reservation
- 2,000 customers expected to be without power for several more days
- 359 homes, multiple businesses, fire & forest facilities, & airport threatened
- ▲ Mandatory evacuations for 800 residents of Wilbur, White Tail, Beaver Creek and East Fork Otter Creek areas
- ▲ 5 shelters open with 34 occupants
- ▲ 513 (+250) personnel including Type 2 IMT

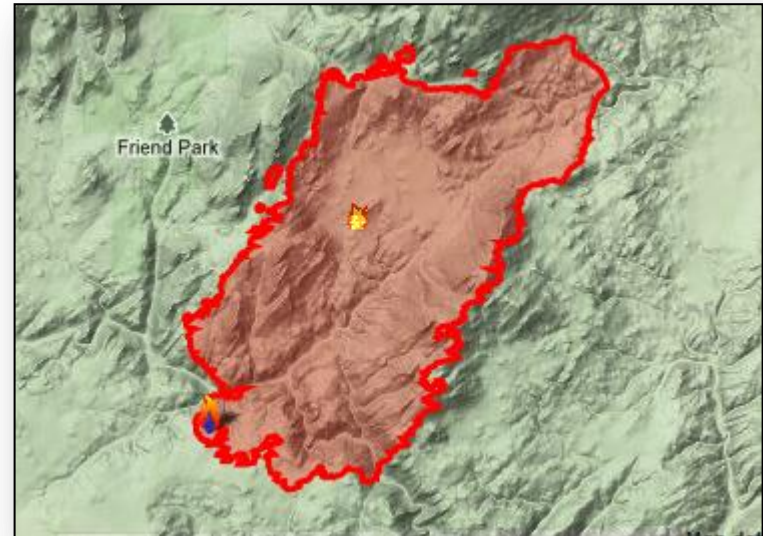


# Arapahoe Fire, WY

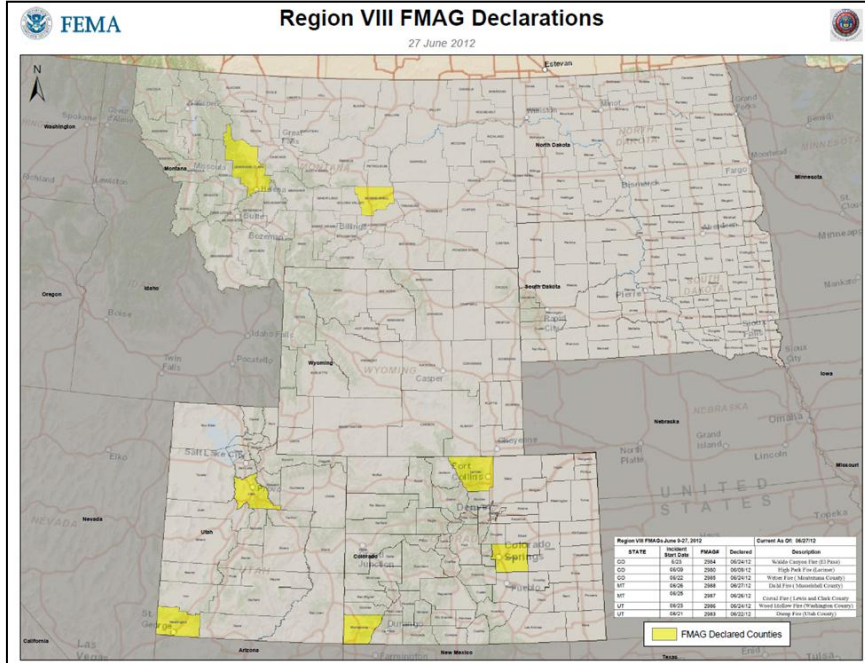


Fire Name	Location	Acres burned	% Contained	Est. Full Containment	FMAG	Structures Lost / Threatened	Fatalities / Injuries
Arapahoe	Albany County, WY	36,847 (+31,935)	0%	Unknown	June 29, 2012	Unknown / 125 homes & military installation	0 / 0

- Fire began June 27
- Located 28 miles NW of Wheatland, WY (pop. 3,627)
- 125 homes west of Wheatland threatened
- Also threatening communications towers, high voltage transmission line, secondary cabins, & watershed/reservoirs
- Mandatory evacuations for 92 residents
- ▲ 377 (+165) personnel including Type 2 IMT
- Type 1 IMT ordered & expected to arrive July 1



# Western Fires



## State Response

### Colorado

- State EOC at Level II (Partial Activation)

### Utah

- State EOC at Level II (Partial Activation)

### Montana

- State EOC at Level III (Partial Activation, daytime only)

### Wyoming

- State EOC at Level III (Full Activation)

## Region Response

- FEMA LNO & DCE at CO EOC
- FEMA LNO, Ops Liaison & DCO at MT EOC
- FEMA Region VIII RRCC at Level II June 27
- RVIII IMAT & MEOV at CO SEOC June 27

## Federal Response

- NRCC at Level II (activated for Midwest/Atlantic Severe Weather)
- NWC at Enhanced Watch with additional staffing (Recovery, Logistics, Threat Monitoring, & LNOs from US Fire Administration & US Forest Service)
- N-IMAT Blue deployed to Colorado EOC
- No request for Logistics support for states

# Disaster Requests & Declarations



Declaration Requests in Process		Requests APPROVED (since last report)	Requests DENIED (since last report)
<b>0</b>	<b>Date Requested</b>	<b>2</b>	<b>0</b>
Severe Storms - WV	June 30, 2012	FEMA-3345-EM-WV June 30, 2012	
Severe Storms - OH	June 30, 2012	FEMA-3346-EM-OH June 30, 2012	

# Emergency Declaration – West Virginia



## FEMA-3345-EM-WV

- Emergency Declaration for State of West Virginia signed June 30, 2012
- For Severe Storms beginning June 29, 2012 & continuing
- Emergency protective measures (Cat B), limited to direct Federal assistance, at 75% federal funding
- For all 55 counties in West Virginia
- FCO is Donald L. Keldsen

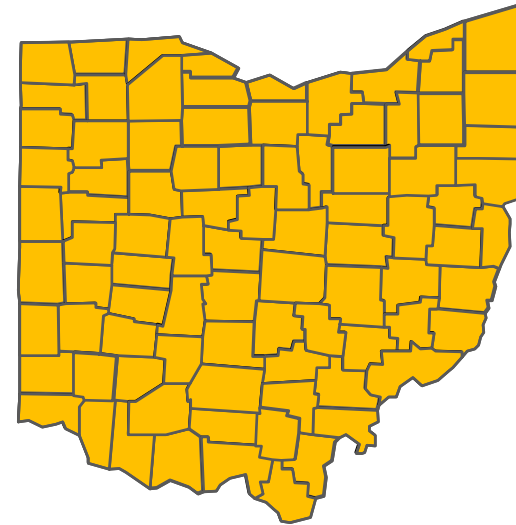


 Approved Counties

# Emergency Declaration – Ohio

## FEMA-3346-EM-OH

- Emergency Declaration for State of Ohio signed June 30, 2012
- For Severe Storms beginning June 29, 2012 & continuing
- Emergency protective measures (Cat B), limited to direct Federal assistance, at 75% federal funding
- For all 88 counties in Ohio
- FCO is W. Michael Moore



 Approved Counties



# FMAG Requests and Declarations



Action (since last report)	Total	FMAG No. and State
Requests DENIED	0	
Requests APPROVED	0	
Requests Expected Next 24 Hours	0	None as of 0800 6/30/12

As of June 30, 2012	2012	2011*
FMAGs Approved	19	74
FMAGs Denied	11	26
* Cumulative FMAG figures as of this date in 2011		

# FCO Cadre Member Status



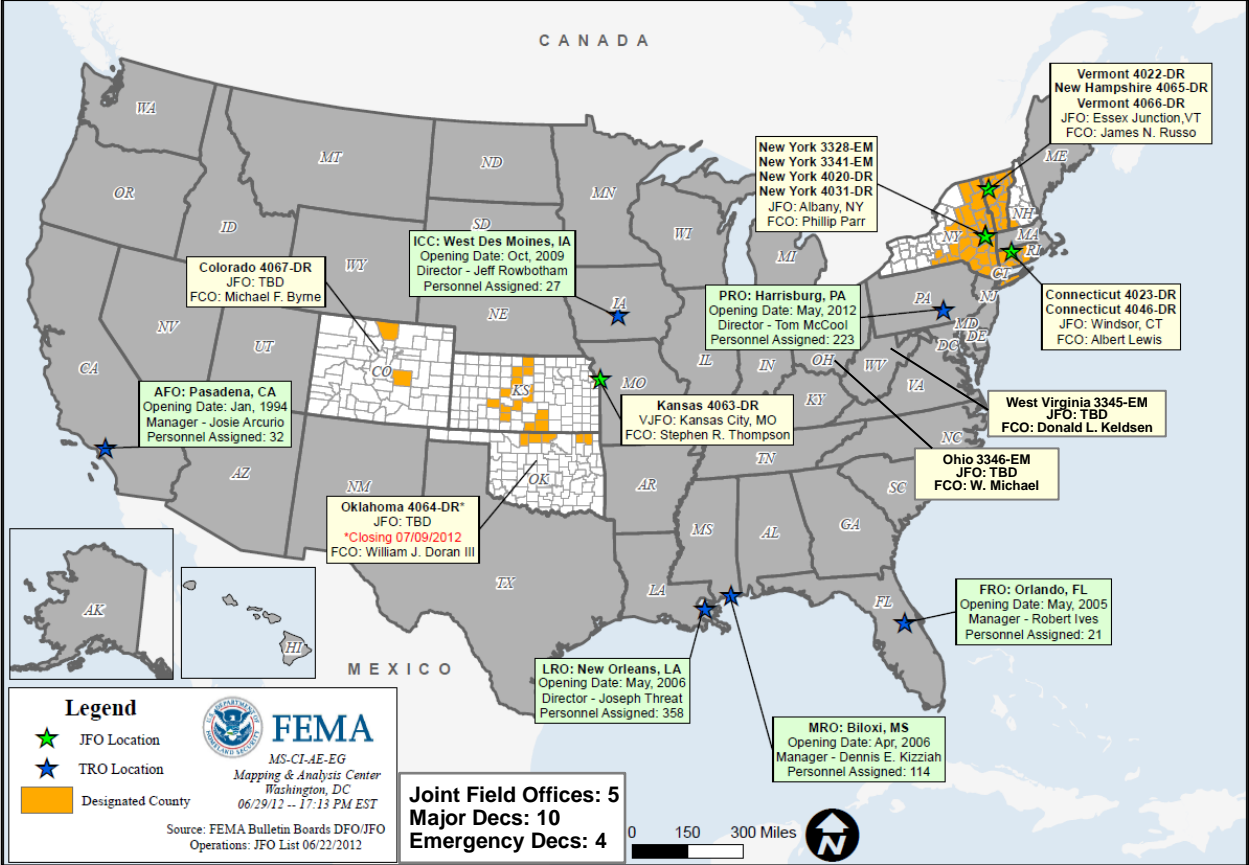
Deployed	Detailed	Available	Not Available	Total
10	1	22	3	36

Total Available	Type 1	Type 2	Type 3	Type 4
25*	3*	10	6	4

**\* All Type 1 FCOs are available unless deployed to a Level 1 event**

**As of: 06/25/12**

# Open Field Offices as of July 1, 2012



# Joint Preliminary Damage Assessments



Region	State	Event	IA/ PA	Number of Counties/Tribes			Begin / End
				Requested	Ongoing	Complete	
IV	FL	Flooding – TS Debby	IA	13	6	0	Began 6/29 End: TBD
			PA	17	6	0	Began 6/29 End: TBD
V	MN	Flooding	PA	14 Counties/ 1 Tribe	0	14 Counties/ 1 Tribe	Began: 6/26 Ended: 6/29
VI	NM	Little Bear Wildfire	PA	1	1	0	Began: 6/28 End: TBD

# MCOV Fleet / Deployment Status



FEMA

MCOV FLEET STATUS					
Location	Units Assigned	Available FMC	Deployed Committed	PMC	NMC
DC Atlanta	21	21			
DC Cumberland	10	10			
DC Ft Worth	15	15			
DC Moffett	6	6			
Holliston, MA	1	1			
Denver, CO	2	2			
Bothell, WA	2	2			
<b>TOTAL</b>	<b>57</b>	<b>57</b>	<b>0</b>	<b>0</b>	<b>0</b>
Included in above totals, units en route for turn-in.					

MCOV DISASTER SUPPORT DEPLOYMENTS					
DR-State	OPCON	En Route	Reserved	Open Request	Notes:
<b>TOTAL</b>	<b>0</b>	<b>0</b>	<b>0</b>	<b>0</b>	

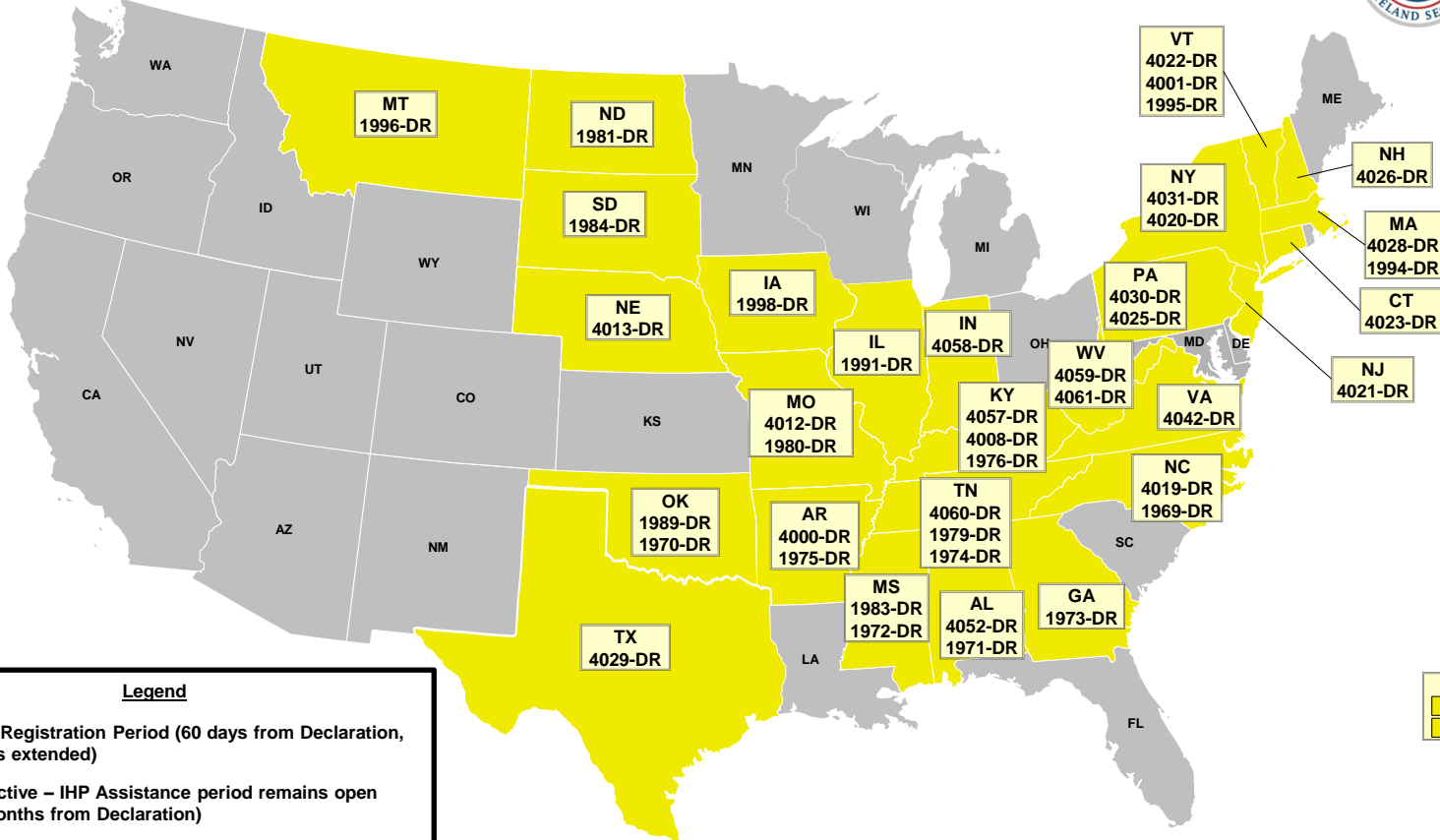
Fully Mission Capable	57
Partially Mission Capable	0
Non-Mission Capable	0
<b>Total Not Deployed</b>	<b>57</b>

Data as of: 06/28/12 @ 1500

# Active IA Disasters



FEMA

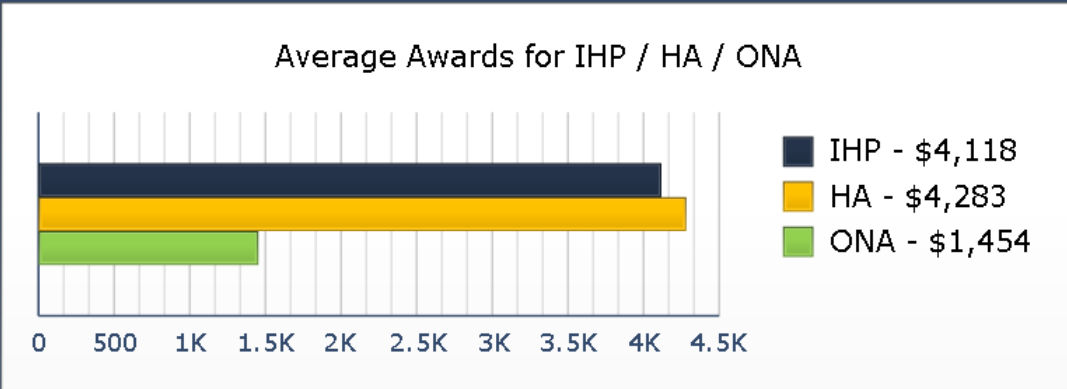
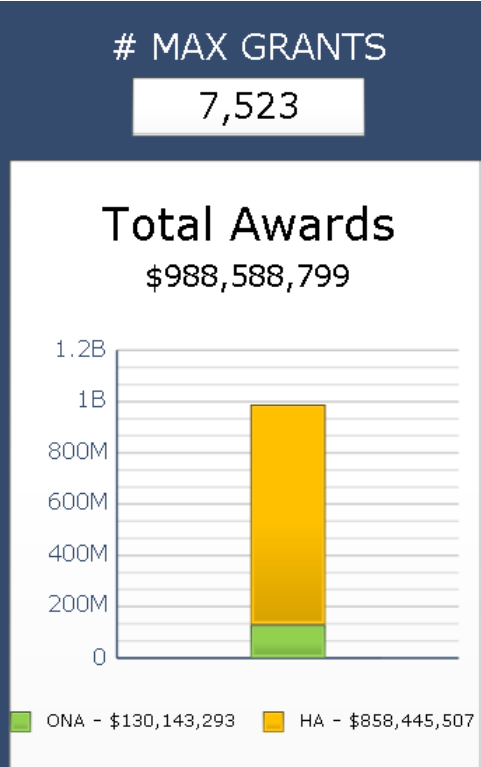
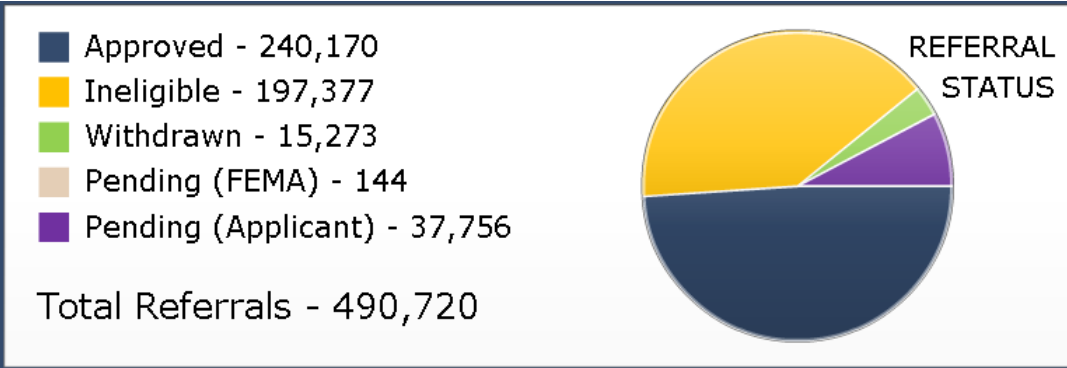


# of DRs	Legend
0	Open Registration Period (60 days from Declaration, unless extended)
44	IHP Active – IHP Assistance period remains open (18 Months from Declaration)
0	IHP Closing Within 60 Days

Data as of: 06/28/12 @ 1500



# IHP Referral Status & Awards



Data includes the 44 IHP Active DRs  
 # Max Grants = Applicants awarded maximum IHP (\$30,200 as of FY2012)

Data as of: 06/28/12 @ 1500

# IMAT Status



National Teams					
Team	Status	Team	Status	Team	Status
BLUE (East)	CO	WHITE (Central)	On standby	RED (West)	
Regional Teams					
Team	Status	Team	Status	Team	Status
Region I	VT	Region V	En route to OH	Region IX-1	
Region II		Region VI-1		Region IX-2	
Region III	WV	Region VI-2	OK	Region X	
Region IV-1		Region VII			
Region IV-2		Region VIII	CO		

= Available/Mission Capable     
  = Assigned/Deployed  
 = Available/Partially Mission Capable     
  = Out-of-Service



# Urban Search & Rescue



INCIDENT SUPPORT TEAMS (Red-White-Blue) – Monthly On Call Rotation											
JAN	FEB	MAR	APR	MAY	JUN	JUL	AUG	SEP	OCT	NOV	DEC
WEST				CENTRAL				EAST			
Team		Status		Team		Status		Team		Status	
CA-TF1	Available	AZ-TF1	Available	FL-TF1	Available	CA-TF2	Available	CO-TF1	Available	FL-TF2	Available
CA-TF3	Available	IN-TF1	Available	MA-TF1	Available	CA-TF4	Available	MO-TF1	Available	MD-TF1	Available
CA-TF5	Available	NE-TF1	Available	NY-TF1	Available	CA-TF6	Available	NM-TF1	Available	PA-TF1	Conditionally Available
CA-TF7	Available	NV-TF1	Available	VA-TF1	Available	CA-TF8	Available	TN-TF1	Available	VA-TF2	Available
WA-TF1	Available	TX-TF1	Available	OH-TF1	Available			UT-TF1	Available		

= Available/Mission Capable     
  = Assigned/Deployed  
 = Available/Partially Mission Capable     
  = Out-of-Service

# RRCC / Regional Watch Center Status



Region	RRCC	Regional Watch Center
I	Watch/Steady State	Maynard MOC (24/7)
II	Watch/Steady State	24/7
III	Level II	24/7
IV	Watch/Steady State	24/7
V	Watch/Steady State	24/7
VI	Watch/Steady State	Denton MOC (24/7)
VII	Level III (7:00 a.m. – 7:00 p.m. CDT)	24/7
VIII	Level II (8:00 a.m. – 6:00 p.m. MDT)	Denver MOC (24/7)
IX	Watch/Steady State	24/7
X	Watch/Steady State	Bothell MOC (24/7)

# National Team Status



Team/Status	Current Location	Remarks
National Watch Center	Washington, DC	Enhanced Watch
NRCC	Washington, DC	Level II
HLT	Miami, FL	Activated
DEST	Washington, DC	Not Activated
Mission Capable	Partially Mission Capable	Not Mission Capable



# FEMA

**FEMA's mission is to support our citizens and first responders to ensure that as a nation we work together to build, sustain, and improve our capability to prepare for, protect against, respond to, recover from, and mitigate all hazards.**