

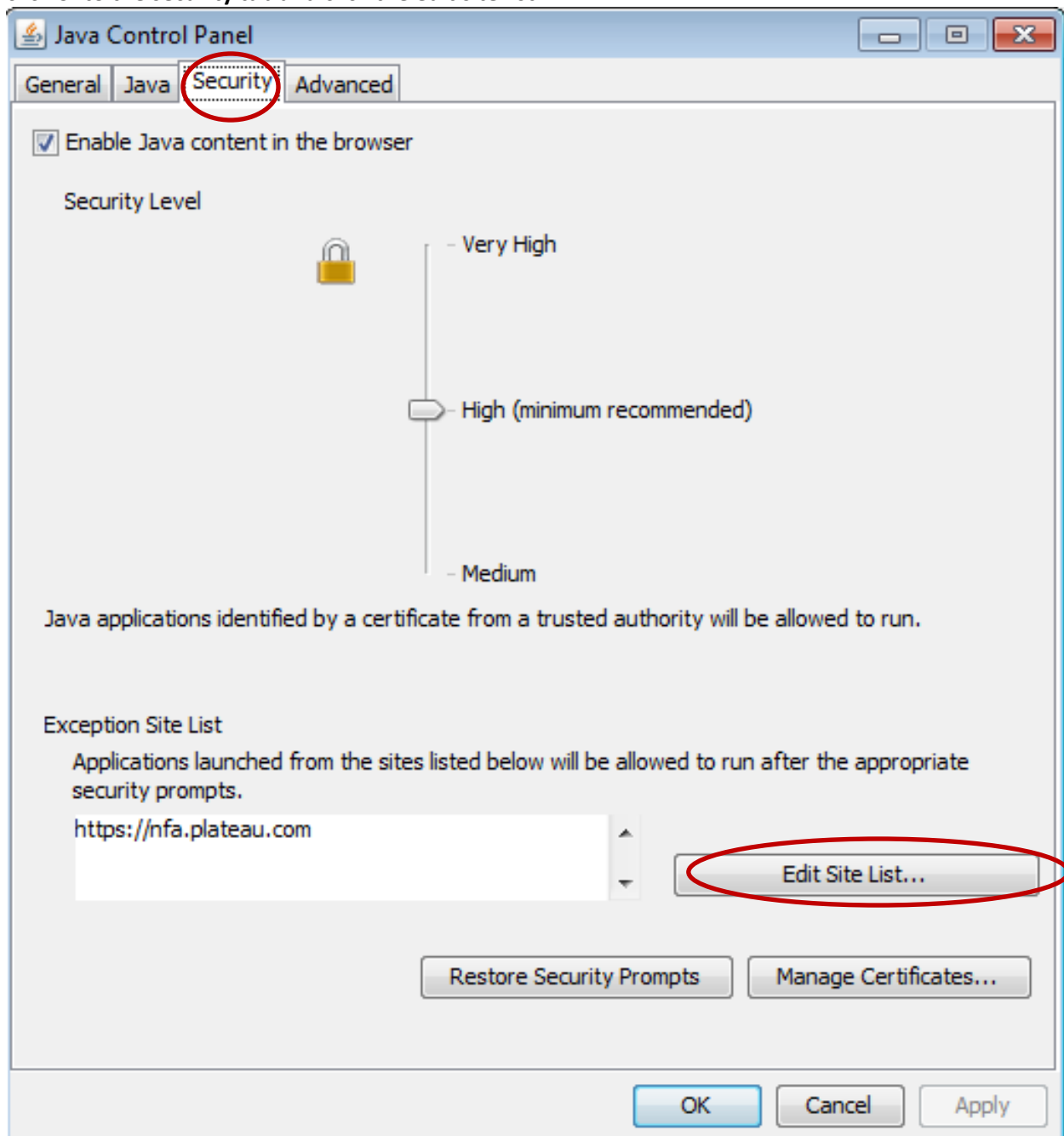
#### DIRECTIONS:

Check your Java version before you attempt to launch the content. It must be on Java update 1.7.0\_51 as there are apparently security issues with the old version (45). Due to the security issues the older versions of Java will not run and will not allow you to launch content from the LMS. Once you update the Java make sure you reboot your machine. Also make sure you have all your browsers closed once it is ready to install (especially if you have both IE and Firefox).

After it is installed you need to open your Java console, either right clicking the little coffee icon in the bottom of the window or through your control panel on the start menu. First click on the GENERAL tab and click the "About" button to verify you are on update "51".

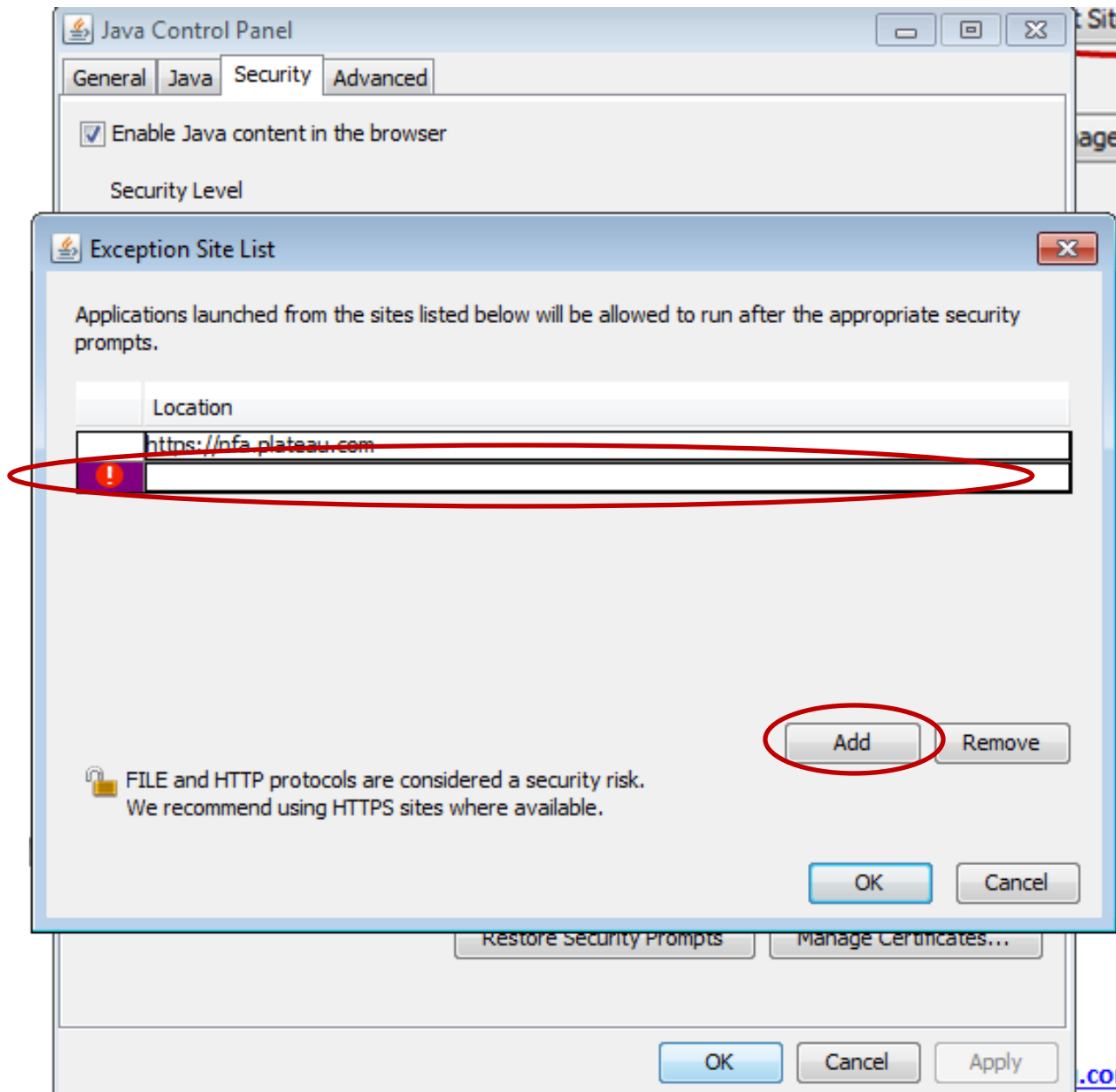


Remember after you installed the update you have to reboot in order for it to show up here. Now click onto the security tab and click the edit site list.

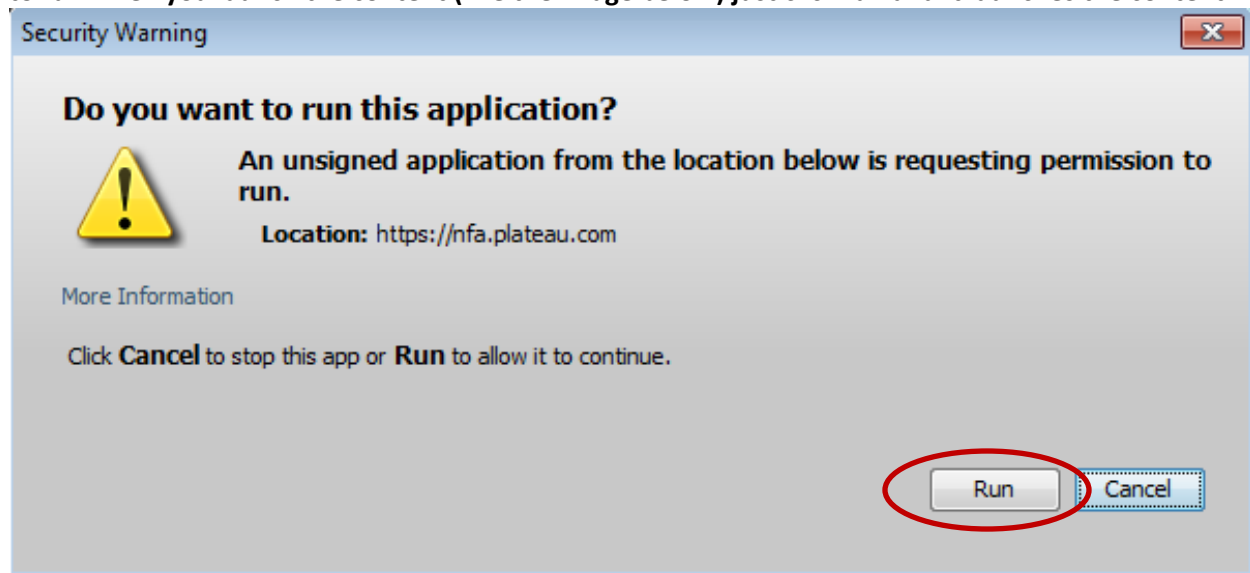


Once the next box is open click the “Add” button then type into the new field with the exclamation point <https://nfa.plateau.com> It MUST be exactly like this and make sure you have the “s” on the http. Tell it ok then log back into the LMS.

NOTE: <https://nfa.plateau.com> is only for whitelisting in Java it is not the URL to log into the LMS. The log in URL is: <https://nfa.plateau.com/learning/user/login.do>



This will allow you to launch and track content complete. You will still get a Java pop up to allow Java to run when you launch the content (like the image below) just click run and it launches the content.



Your content will then open up in a separate window!