



Partnering with ASPR's Division of Critical Infrastructure Protection During Response



Increasing Awareness

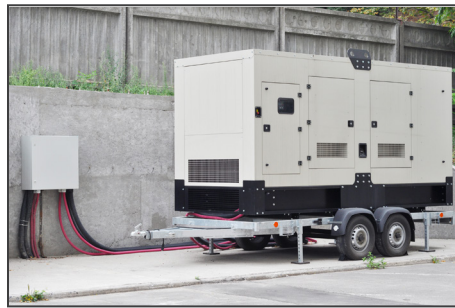
Coordinate with partners across the Healthcare and Public Health Sector, including:

- U.S. Department of Health and Human Services
- Emergency Support Function Eight (ESF-8) partners
- FEMA: National Business Emergency Operations Center
- Coalitions and Associations

Share and receive information to support government and private sector decision making.

Connect with partners to share novel solutions and achieve shared goals.

ASPR saves lives and protects Americans from 21st century health security threats.



Assessing Impacts

Anticipating the needs of and impacts to:

- Local public health: lab tests and samples
- Hospitals
- Nursing homes and elderly populations
- Dialysis centers & patient access
- Supply chain: manufacturing, pharmaceutical and medical surgical distribution
- Blood banks and products
- Pharmacies



Coordinating Resource Requests

Communicate needs to the appropriate partners for potential critical resource support, including:

- Generators: maintenance and re-fueling
- Transportation Support: Shipment via barge or air, Road clearing to access facilities
- Disaster communications challenges

For more information, access: www.PHE.gov/cip or email: cip@hhs.gov

