



U.S. Coast Guard Sector Maryland-NCR

2401 HAWKINS POINT ROAD, BLDG 70

BALTIMORE, MD 21226-1791

Phone: (410) 576-2525

MARINE SAFETY INFORMATION BULLETIN 016-25

August 19, 2025

Port of Baltimore Safety Zones –Marine Casualty and Hazard to Navigation

Two safety zones have been established. For all navigable waters of the Chesapeake Bay within a 2000-yard radius of a hatch cover with an estimated position of 39.20692 N 76.51733 W, Figure 01, and all navigable waters of the Chesapeake Bay within a 500-yard radius of the MV W-SAPPHIRE anchored in position 39.02333 N 76.36833 W, Figure 02. The #2 cargo hold hatch cover blew off the 791-foot Liberian-flagged vessel W-SAPPHIRE on August 18, 2025.

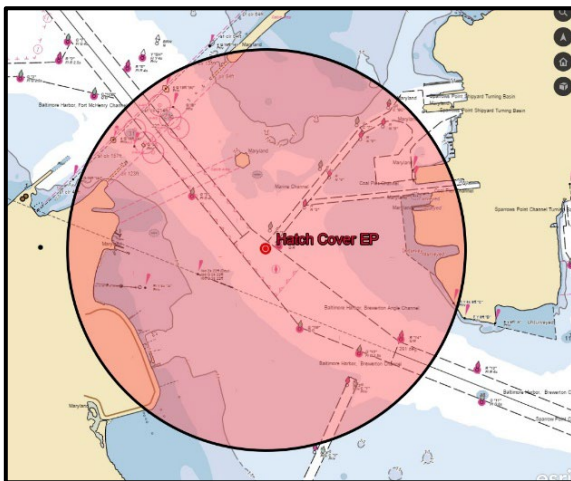


Figure 2

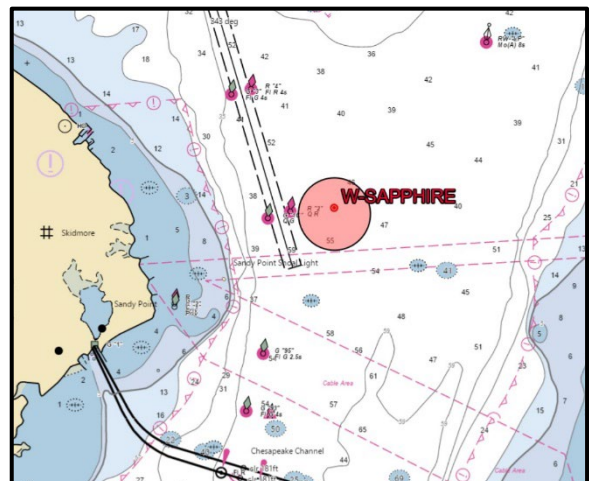


Figure 1

The safety zones are intended to protect personnel, vessels, and the marine environment in these navigable waters. No vessel or person will be permitted to enter the safety zone without obtaining permission from the COTP or a designated representative. The COTP is currently issuing a Broadcast Notice to Mariners (BNM) via VHF-FM marine channel 16. Mariners are requested to monitor the VHF channel 16 for the latest information.

You may not enter the safety zone described above unless authorized by the COTP or the COTP's designated representative. To seek permission to enter, contact the COTP or the COTP's representative by telephone at (410) 576-2525 or on Marine Band Radio VHF-FM channel 16 (156.8 MHz). Those in the safety zone must comply with all lawful orders or directions given to them by the COTP or the COTP's designated representative. The U.S. Coast Guard may be assisted in the patrol and enforcement of the safety zone by Federal, State, and local agencies.

If you have any questions regarding the contents of this bulletin, please contact the Command Center at (410) 576-2525, or via email at d05-smb-sectormd-ncr-scc@uscg.mil.