

# CVOW-C MARINER UPDATE 2023 #1: 06-JAN-2023



## BOEM Releases CVOW-C Draft Environmental Impact Statement (DEIS)

The Notice of Availability for the planned Coastal Virginia Offshore Wind Commercial (CVOW-C) project draft Environmental Impact Statement (DEIS) was published in the Federal Register on Dec. 16, 2022, opening a 60-day public comment period, which ends on Feb. 14, 2023. The input received via this process will inform preparation of the final Environmental Impact Statement (EIS). The CVOW-C DEIS, instructions on how to provide comments on the document, and information regarding the three (3) planned public meetings can be accessed on the BOEM website (<https://www.boem.gov/renewable-energy/state-activities/cvow-c-deis-project-page-virtual-meetings>).

Public meeting dates and links to register for the meetings are listed below:

- Jan. 25, 2023; 5:00 pm ([https://us02web.zoom.us/webinar/register/WN\\_GDbWic1CTXKpQnBhx54QEQ](https://us02web.zoom.us/webinar/register/WN_GDbWic1CTXKpQnBhx54QEQ))
- Jan. 31, 2023; 5:00 pm ([https://us02web.zoom.us/webinar/register/WN\\_AqudSixJR6KuZ1JFr5Gczg](https://us02web.zoom.us/webinar/register/WN_AqudSixJR6KuZ1JFr5Gczg))
- Feb. 2, 2023; 11:00 am ([https://us02web.zoom.us/webinar/register/WN\\_b3xEbq7BQGKH5e4MFAUKHw](https://us02web.zoom.us/webinar/register/WN_b3xEbq7BQGKH5e4MFAUKHw))

## Existing Offshore Turbines and Oceanographic Buoys

The two (2) CVOW Pilot Project (CVOW-P) turbines have been operational in federal waters since January 2021. The CVOW-P turbines are shown on the updated NOAA Nautical Charts (Chart #s 12200 and 12221); the GPS positions of the turbines are given below. Fishermen are allowed to fish close to the turbines but coming into contact with them is prohibited. Mariners are also advised to be mindful of maintenance vessels that may need to access the turbines, we request that you make way for them so that they can safely access their work site.

The two (2) oceanographic buoys deployed within the CVOW-C lease, which had been providing near real-time oceanographic conditions for over a year, have been recovered.

Item	Latitude (DD MM.mmm)	Longitude (DD MM.mmm)
Pilot Turbine CV-A01	36° 53.778' N	75° 29.498' W
Pilot Turbine CV-A02	36° 53.210' N	75° 29.495' W

## Unexploded Ordnance (UXO) Survey Work Continues Into 2023

The UXO Survey within the export cable corridor (Areas A and B) is complete, survey activities within the CVOW-C lease (Area C) are expected to continue through March 2023. The survey vessels operate on a 24/7 basis within the area identified below. We remain committed to maintaining communications with fishing communities and other mariners in the area via these periodic updates, informational speaking engagements, dock visits, and the information is posted on the [CVOW Website](#). Mariners are also encouraged to contact Dominion Energy's Fisheries Liaisons with any specific questions about CVOW project activities in relation to fisheries.

Mariners transiting or fishing in the survey area are requested to give a wide berth to survey vessels which may be limited in their ability to maneuver and towing gear up to 1,000' behind the vessel. Mariners should operate in a manner that will not endanger themselves, the survey vessel or its equipment, a 0.5 NM clearance is requested.

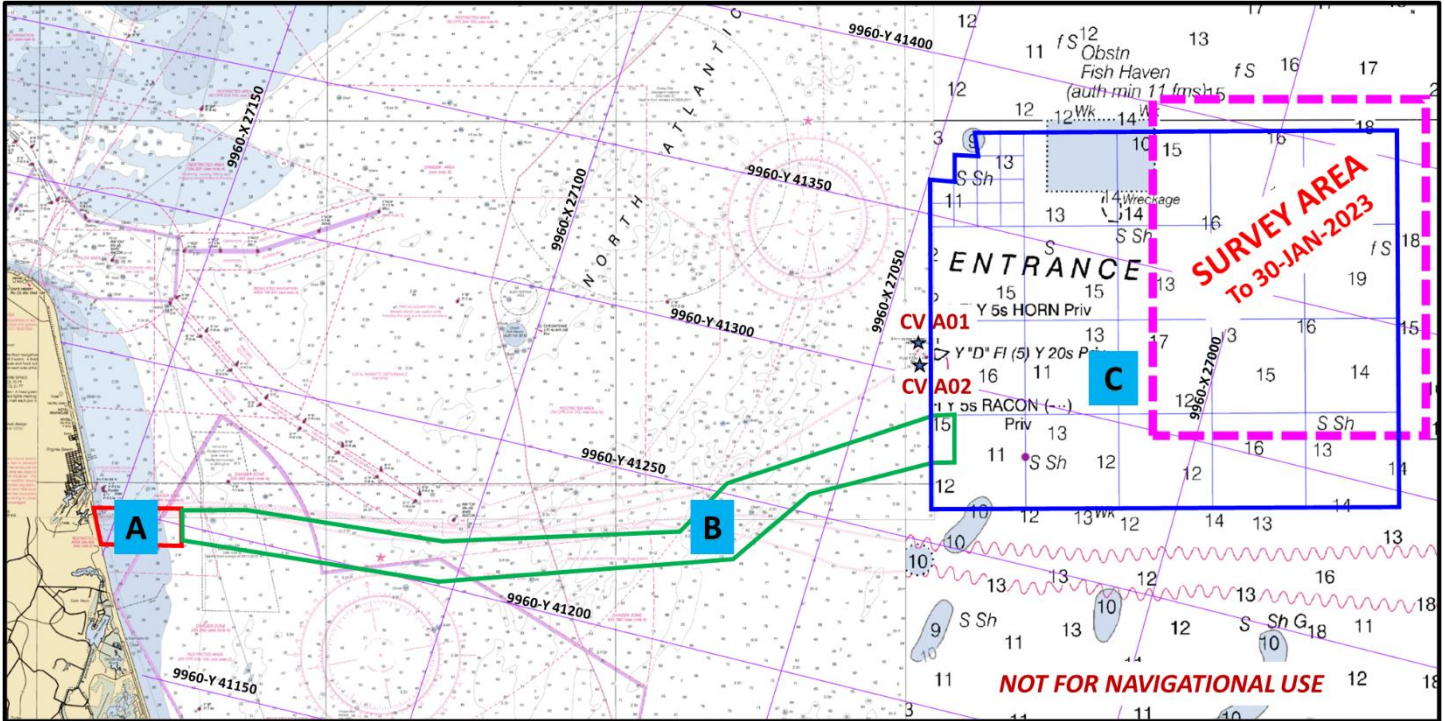
# CVOW-C MARINER UPDATE 2023 #1: 06-JAN-2023

Vessels are requested to avoid anchoring in the identified survey area and fishing vessels deploying fixed fishing gear (e.g., pots, traps, gillnets, etc.) are requested to coordinate activities with the Fisheries Liaison to avoid damage to fishing gear and/or the survey equipment.

For the Survey Period from 05-JAN-2023 through 30-JAN-2023 the vessels will operate within a Survey Area shown below, ~30 nautical miles east of Cape Henry, bounded by the following:

- Western boundary 75° 21.4'W
- Northern boundary 37° 00.7'N
- Eastern boundary 75° 12.0'W
- Southern boundary 36° 51.0'N

## Chart reflects planned UXO Survey Areas (A, B & C)



Please consult the [USCG 5th District Local Notice to Mariners](#) for additional information on offshore activity and, as always, please adhere to the USCG Rules of the Road for mariners: <https://www.dco.uscg.mil/NavRules/>

### Minerva Uno: 155' LOA; 30' Beam

- Call Sign: IZVM
- Flag: Marshall Is.
- MMSI: 247080700
- IMO: 9262077

### Shearwater: 110' LOA; 30' Beam

- Call Sign: WDF5838
- Flag: USA
- MMSI: 368528000
- IMO: 8993966



## Contact Us

<b>Ron Larsen</b>	Fisheries Liaison	<a href="mailto:ronlarsen@searisksolutions.com">ronlarsen@searisksolutions.com</a>	570.242.5023
<b>Wolfgang Rain</b>	Fisheries Liaison	<a href="mailto:wrain@searisksolutions.com">wrain@searisksolutions.com</a>	206.427.6553
<b>Jerry Barnes</b>	Marine Affairs	<a href="mailto:jerry.r.barnes@dominionenergy.com">jerry.r.barnes@dominionenergy.com</a>	
<b>Scott Lawton</b>	Environmental Advisor	<a href="mailto:scott.lawton@dominionenergy.com">scott.lawton@dominionenergy.com</a>	

Additional project information is available on the Coastal Virginia Offshore Wind project webpage ([www.coastalvawind.com](http://www.coastalvawind.com))