

COMMENCING FIRST WEEK OF SEPTEMBER:  
Dredge CAROLINA is working red side between  
LB26 and LB28 with floating pipeline blocking  
the Bolivar Alternate Inbound Route.

**Duration: 5-7 days.**

**Bolivar Alt Inbound Route CLOSED to all traffic.**

**\*\*Effective Radio Communication is Paramount\*\***

Alt Route blocked

LB28

LB26

LB18

LB16

**Aids to Navigation** in dredging  
area are VIRTUAL. They are  
broadcast on AIS.  
Physical Aids have been  
temporarily disestablished for  
the dredge project.



**\*NOT TO BE USED FOR NAVIGATION\***

DURING 2ND TO 3RD WEEK OF SEPTEMBER:  
Dredge CAROLINA is working red side below LB 26  
with floating pipeline blocking the GIWW at Bolivar.

**Duration: 2 to 4 days blocking GIWW.**

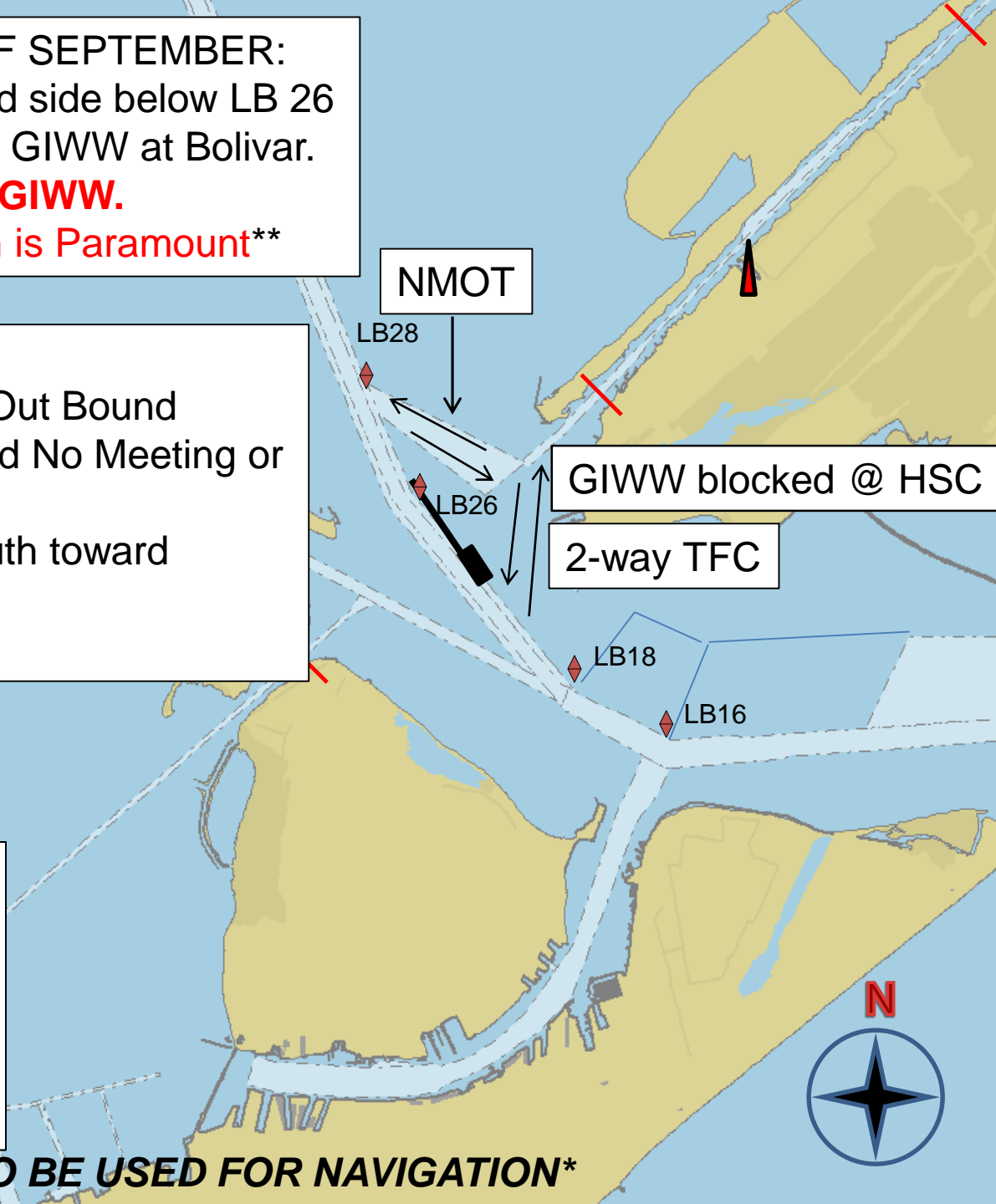
**\*\*Effective Radio Communication is Paramount\*\***

**TFC Measures:**

- 1) Bol Alt Route Usage: Both In/Out Bound traffic, however, one at a time and No Meeting or Over-Taking (NMOT).
- 2) Other traffic must proceed south toward LB 18, then around the dredge. 2-way traffic permitted.

**Aids to Navigation** in dredging area are VIRTUAL. They are broadcast on AIS. Physical Aids have been temporarily disestablished for the dredge project.

**\*NOT TO BE USED FOR NAVIGATION\***



LATE SEPTEMBER TO OCTOBER:  
**No Traffic Measures anticipated** while CAROLINA works below the GIWW.  
HOWEVER, vessels must continue effective communication and transit with caution.

GIWW Clear

LB28

LB26

LB18

LB16

Swan Lake

**Aids to Navigation** in dredging area are VIRTUAL. They are broadcast on AIS. Physical Aids have been temporarily disestablished for the dredge project.



**\*NOT TO BE USED FOR NAVIGATION\***