

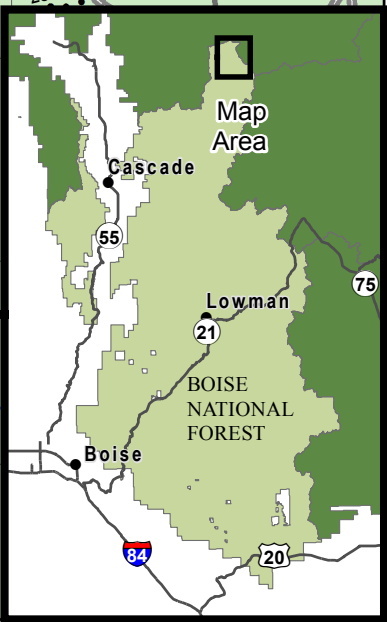
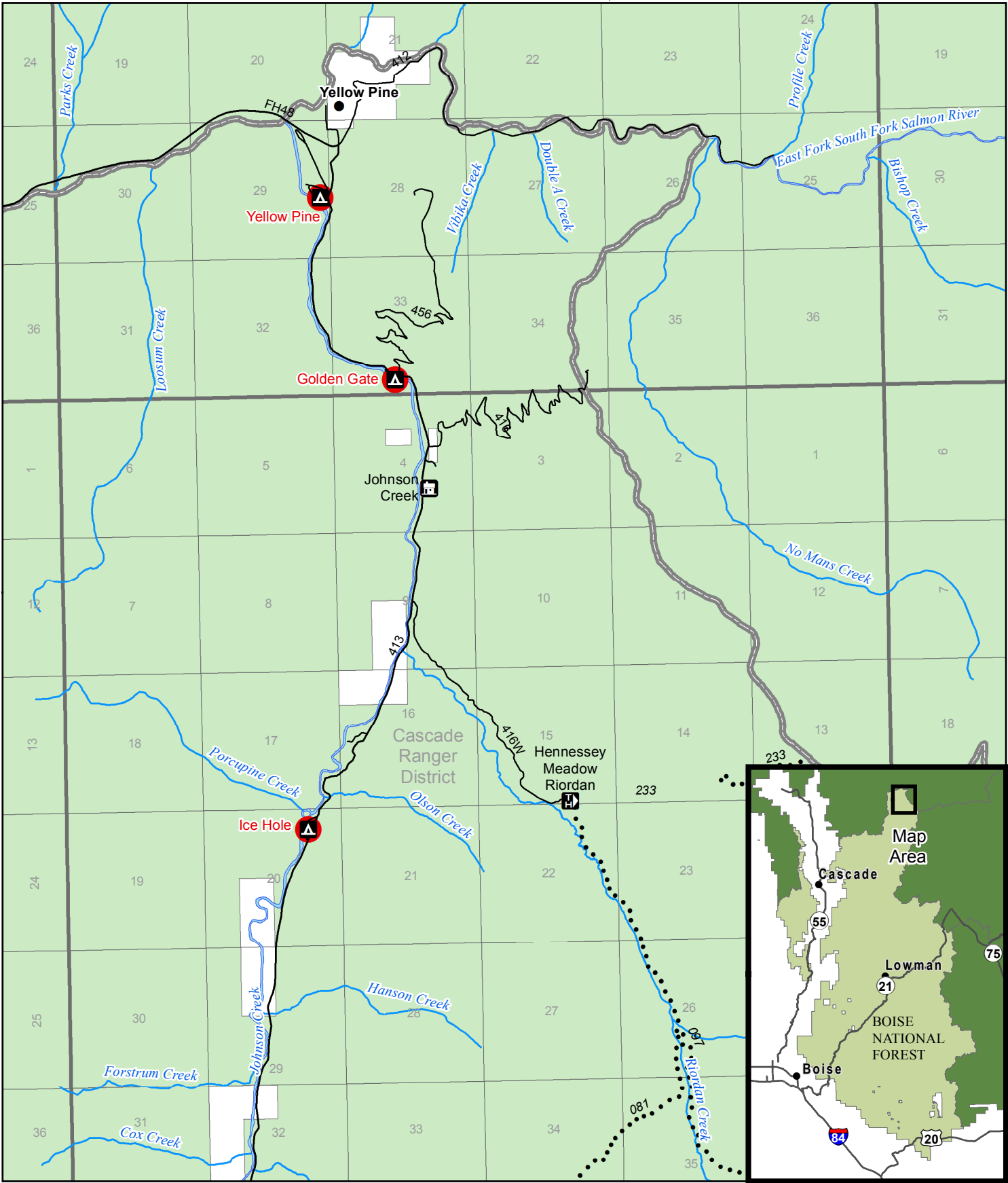


# Boise National Forest

## COVID-19 Response Recreation Site Closures

Order Number - 0402-00-59

The U.S. Department of Agriculture, Forest Service uses the most current and complete data available. GIS data and product accuracy may vary. They may be developed from sources of differing accuracy, accurate only at certain scales, based on modeling or interpretation, incomplete while being revised or created, etc. Using GIS products for purposes other than those for which they were created, may yield inaccurate or misleading results. The Forest Service reserves the right to correct, modify, or replace GIS products without notification.



Closed Site

Campground

Cabin/Lookout

Trailhead

Motorized Trail

BNF and Other Roads

PLSS Township

PLSS Section

USFS

Private

0 0.5 1 2 Miles

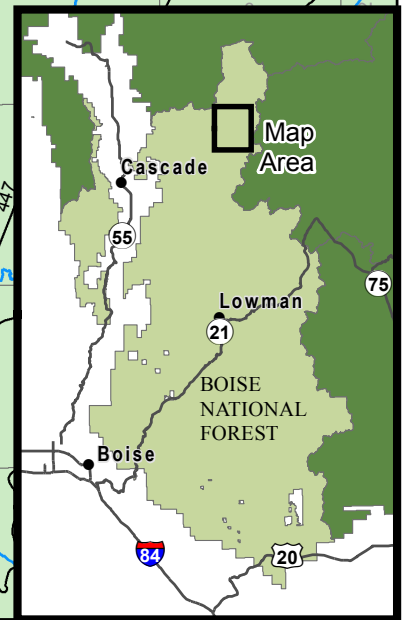
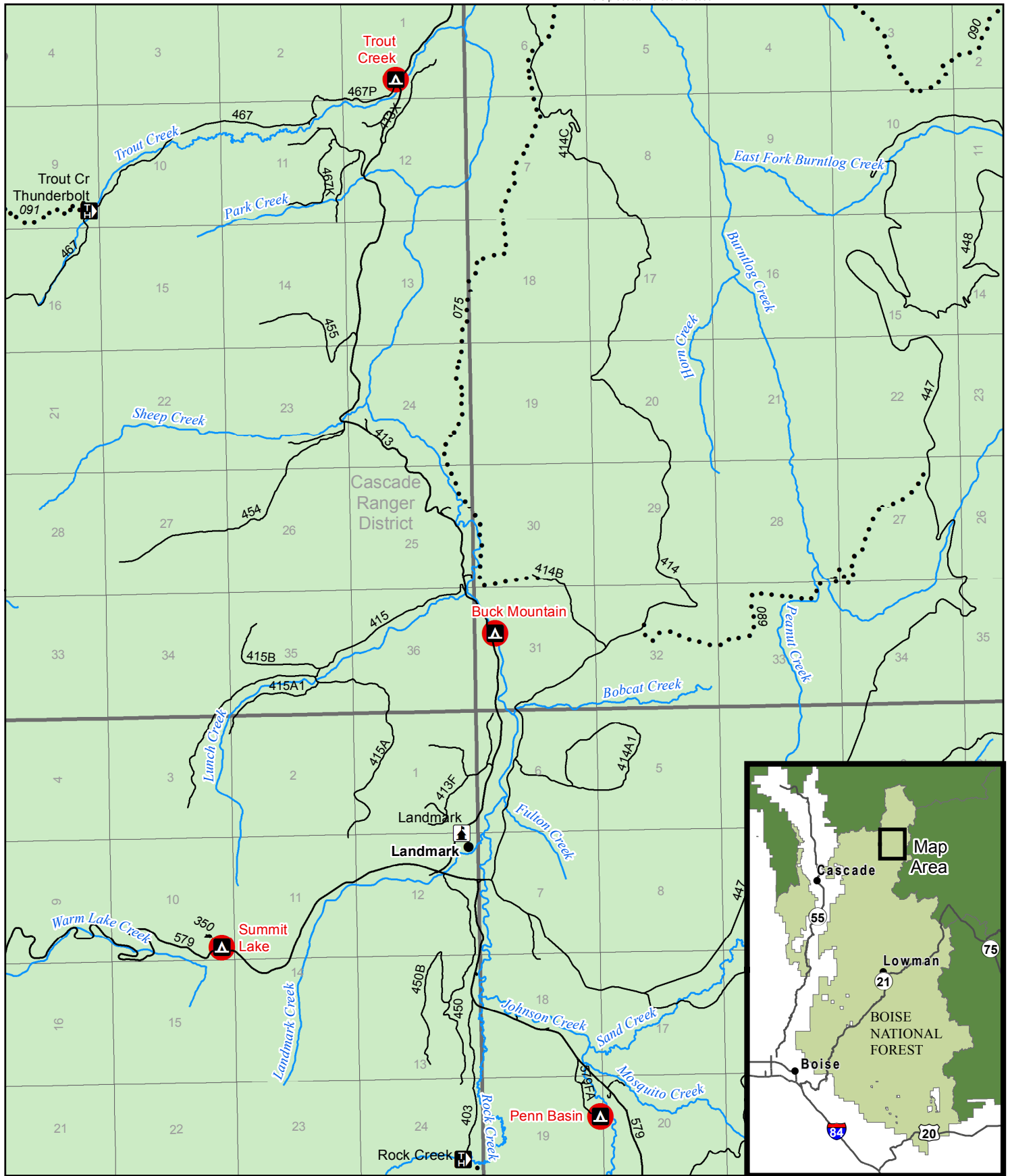


# Boise National Forest

## COVID-19 Response Recreation Site Closures

Order Number - 0402-00-59

The U.S. Department of Agriculture, Forest Service uses the most current and complete data available. GIS data and product accuracy may vary. They may be developed from sources of differing accuracy, accurate only at certain scales, based on modeling or interpretation, incomplete while being revised or created, etc. Using GIS products for purposes other than those for which they were created, may yield inaccurate or misleading results. The Forest Service reserves the right to correct, modify, or replace GIS products without notification.



- Closed Site
- Campground
- Interpretive Site (Admin)
- Trailhead
- Non-Motorized Trail
- Motorized Trail
- BNF and Other Roads
- PLSS Township
- PLSS Section
- USFS

0 0.5 1 2 Miles

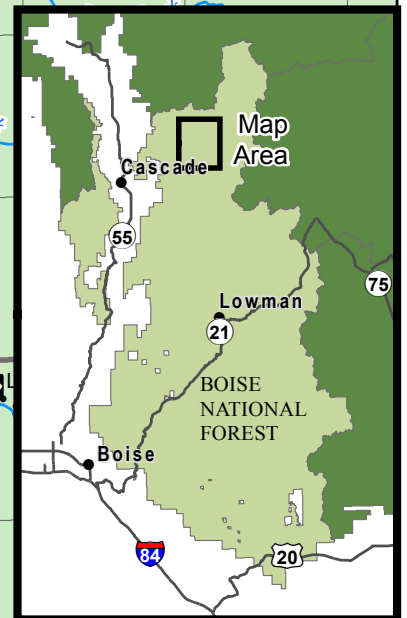
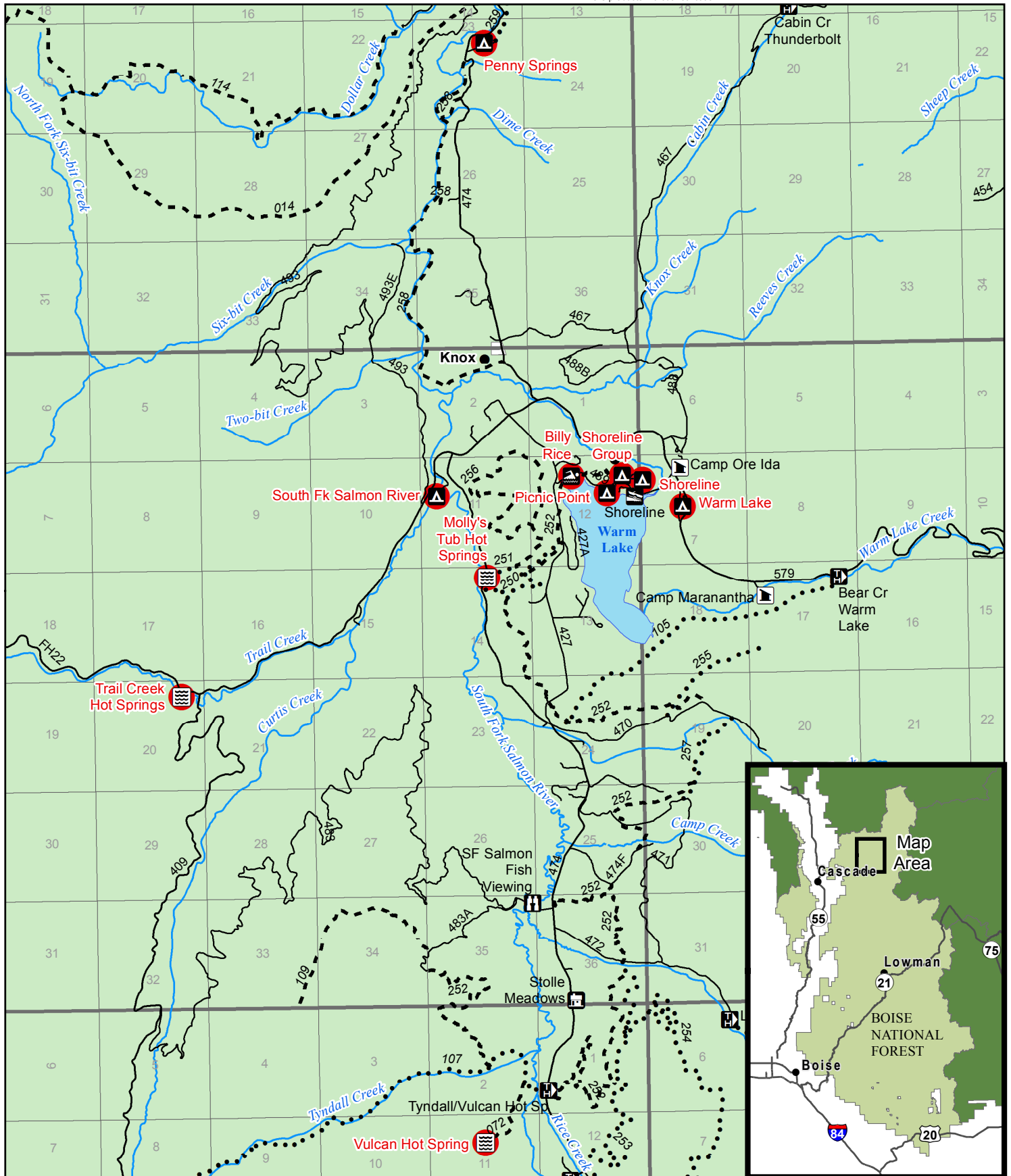


# Boise National Forest

## COVID-19 Response Recreation Site Closures

Order Number - 0402-00-59

The U.S. Department of Agriculture, Forest Service uses the most current and complete data available. GIS data and product accuracy may vary. They may be developed from sources of differing accuracy, accurate only at certain scales, based on modeling or interpretation, incomplete while being revised or created, etc. Using GIS products for purposes other than those for which they were created, may yield inaccurate or misleading results. The Forest Service reserves the right to correct, modify, or replace GIS products without notification.



- |                   |                       |                     |                     |         |
|-------------------|-----------------------|---------------------|---------------------|---------|
| Closed Site       | Boating Site          | Swimming Site       | Non-Motorized Trail | USFS    |
| Campground        | Trailhead             | Motorized Trail     | Motorized Trail     | Private |
| Cabin/Lookout     | Wildlife Viewing Site | BNF and Other Roads | PLSS Township       |         |
| Organization Site | Hot Spring            | PLSS Section        |                     |         |

0 0.5 1 2 Miles

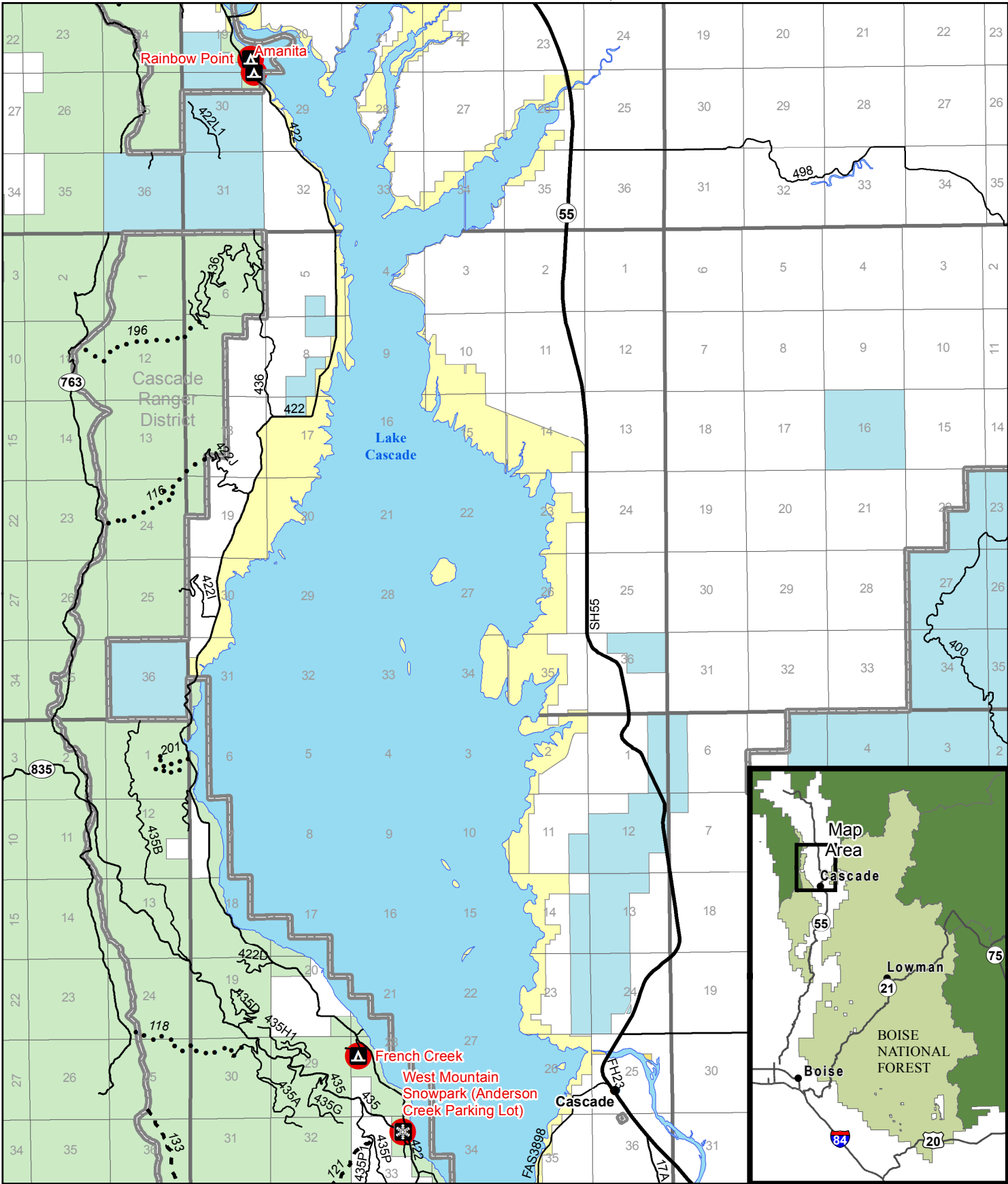


# Boise National Forest

## COVID-19 Response Recreation Site Closures

Order Number - 0402-00-59

The U.S. Department of Agriculture, Forest Service uses the most current and complete data available. GIS data and product accuracy may vary. They may be developed from sources of differing accuracy, accurate only at certain scales, based on modeling or interpretation, incomplete while being revised or created, etc. Using GIS products for purposes other than those for which they were created, may yield inaccurate or misleading results. The Forest Service reserves the right to correct, modify, or replace GIS products without notification.



- Closed Site
- Campground
- Non-Motorized Trail
- Motorized Trail
- BNF and Other Roads
- Major Road
- PLSS Township
- PLSS Section
- USFS
- BLM
- State
- Private
- Bureau of Reclamation
- Snowpark

0 0.5 1 2 Miles

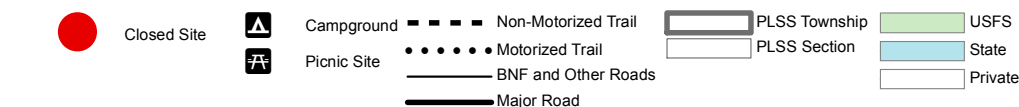
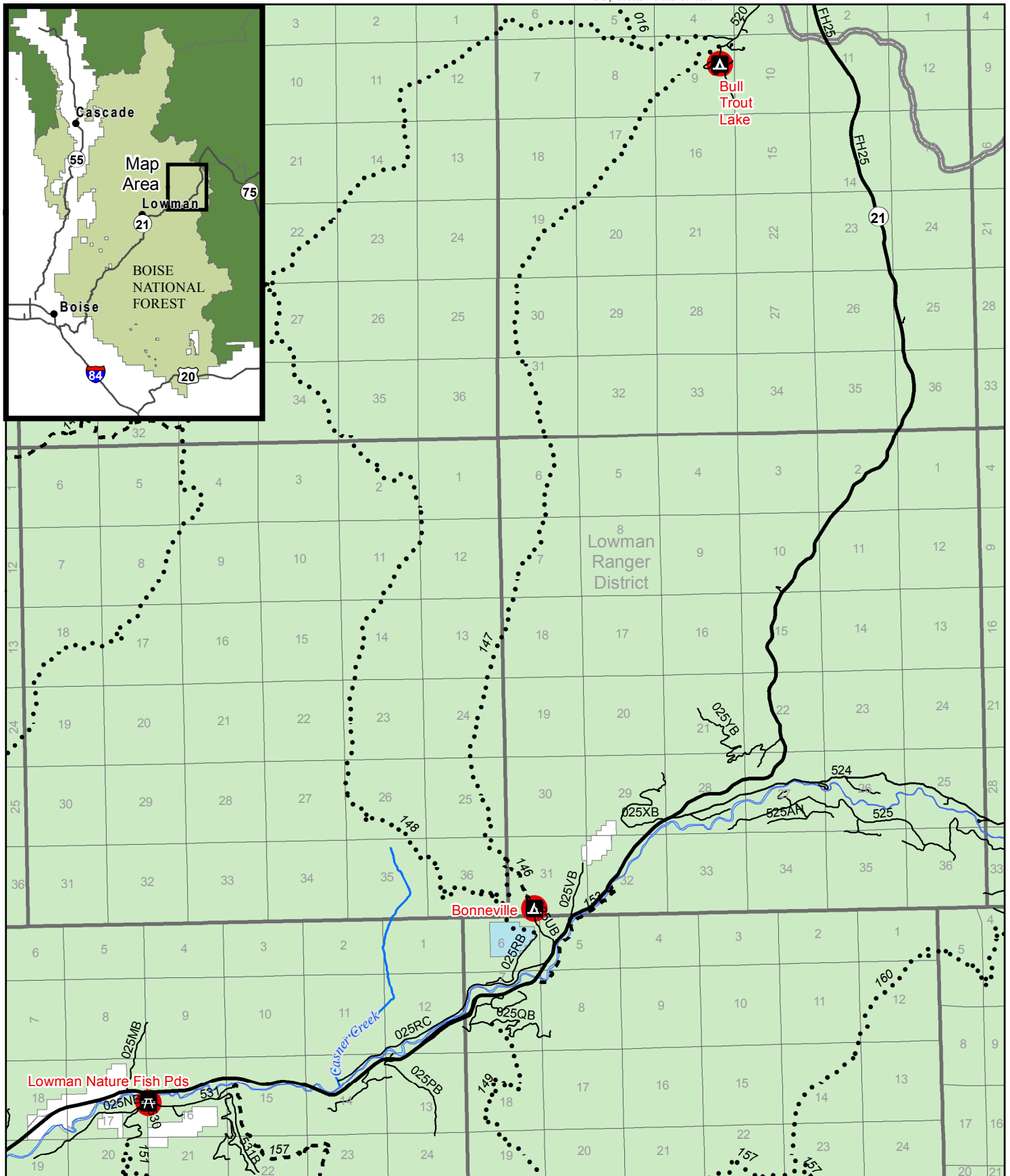


# Boise National Forest

## COVID-19 Response Recreation Site Closures

Order Number - 0402-00-59

The U.S. Department of Agriculture, Forest Service uses the most current and complete data available. GIS data and product accuracy may vary. They may be developed from sources of differing accuracy, accurate only at certain scales, based on modeling or interpretation, incomplete while being revised or created, etc. Using GIS products for purposes other than those for which they were created, may yield inaccurate or misleading results. The Forest Service reserves the right to correct, modify, or replace GIS products without notification.



0 0.5 1 2 Miles



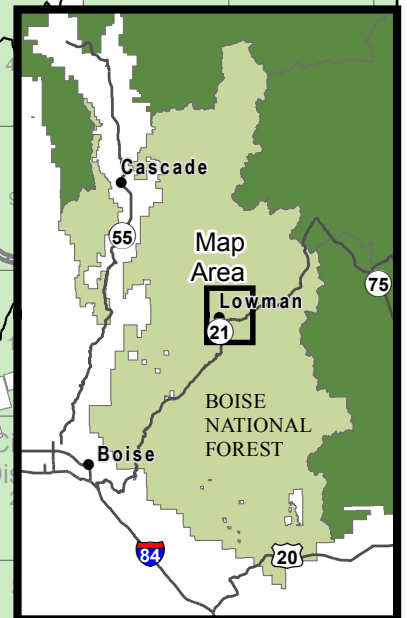
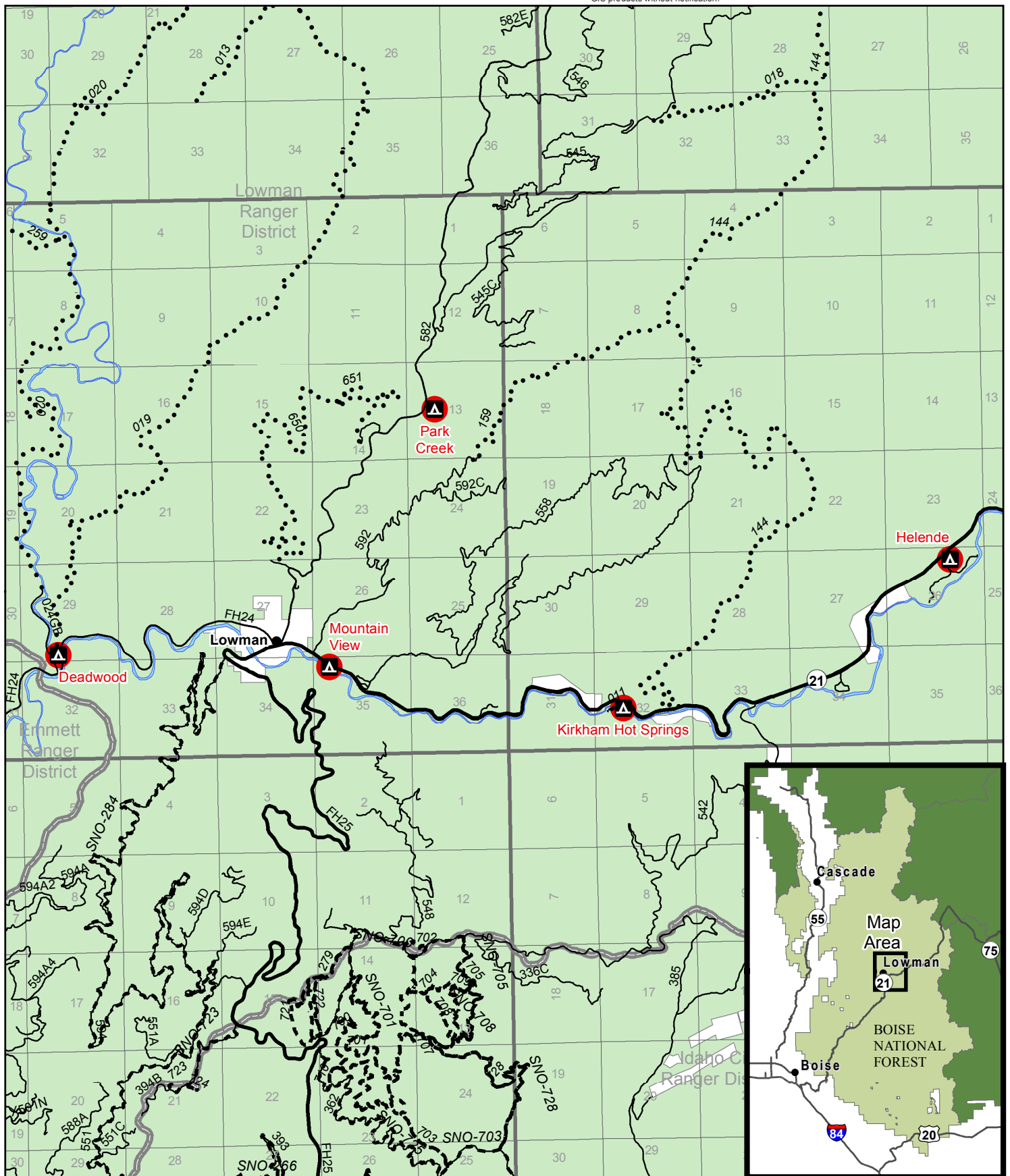


# Boise National Forest

## COVID-19 Response Recreation Site Closures

Order Number - 0402-00-59

The U.S. Department of Agriculture, Forest Service uses the most current and complete data available. GIS data and product accuracy may vary. They may be developed from sources of differing accuracy, accurate only at certain scales, based on modeling or interpretation, incomplete while being revised or created, etc. Using GIS products for purposes other than those for which they were created, may yield inaccurate or misleading results. The Forest Service reserves the right to correct, modify, or replace GIS products without notification.



- Closed Site
- Campground
- Non-Motorized Trail
- Motorized Trail
- BNF and Other Roads
- Major Road
- PLSS Township
- PLSS Section
- USFS
- Private

0 0.375 0.75 1.5 Miles

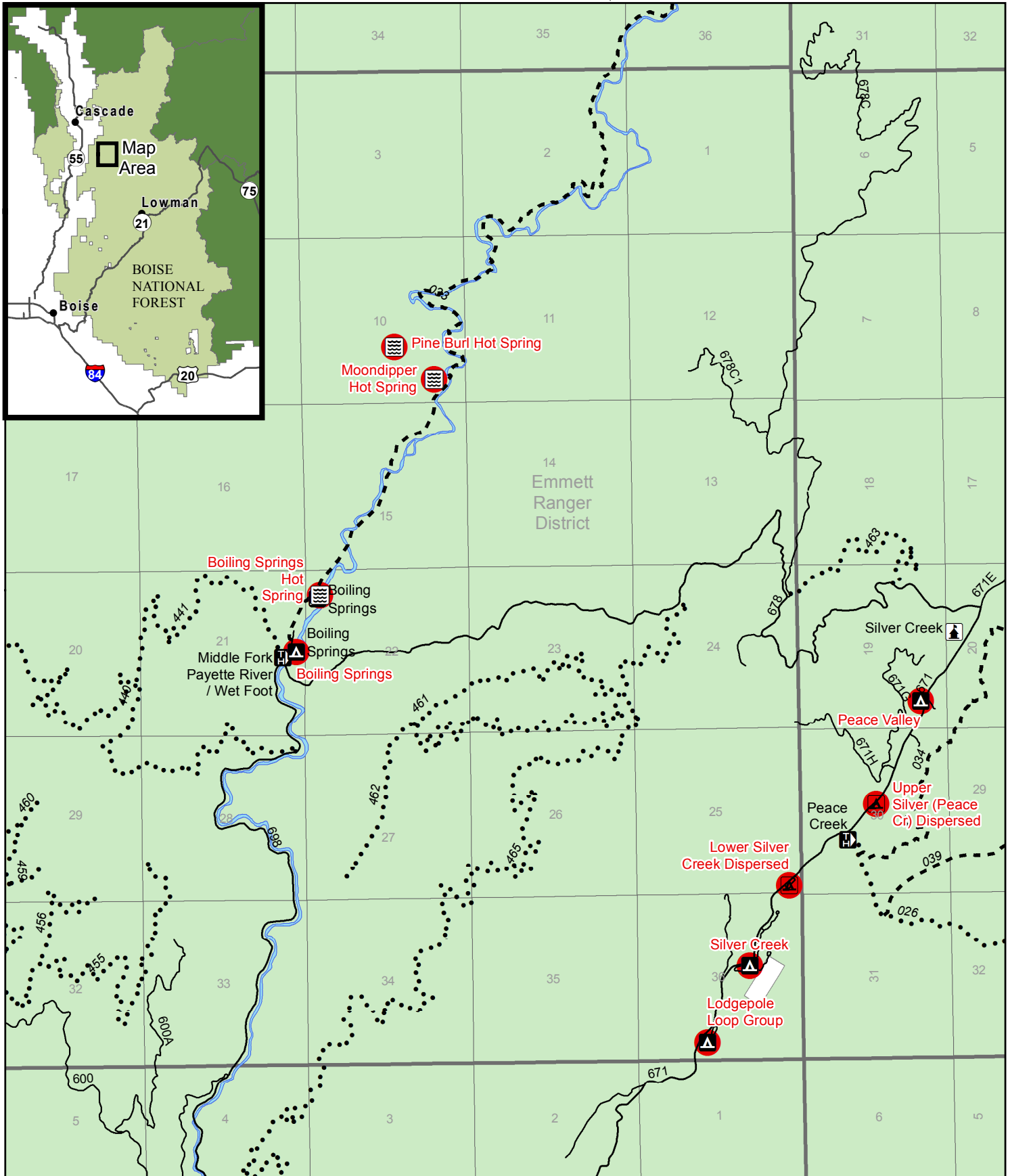


# Boise National Forest

## COVID-19 Response Recreation Site Closures

Order Number - 0402-00-59

The U.S. Department of Agriculture, Forest Service uses the most current and complete data available. GIS data and product accuracy may vary. They may be developed from sources of differing accuracy, accurate only at certain scales, based on modeling or interpretation, incomplete while being revised or created, etc. Using GIS products for purposes other than those for which they were created, may yield inaccurate or misleading results. The Forest Service reserves the right to correct, modify, or replace GIS products without notification.



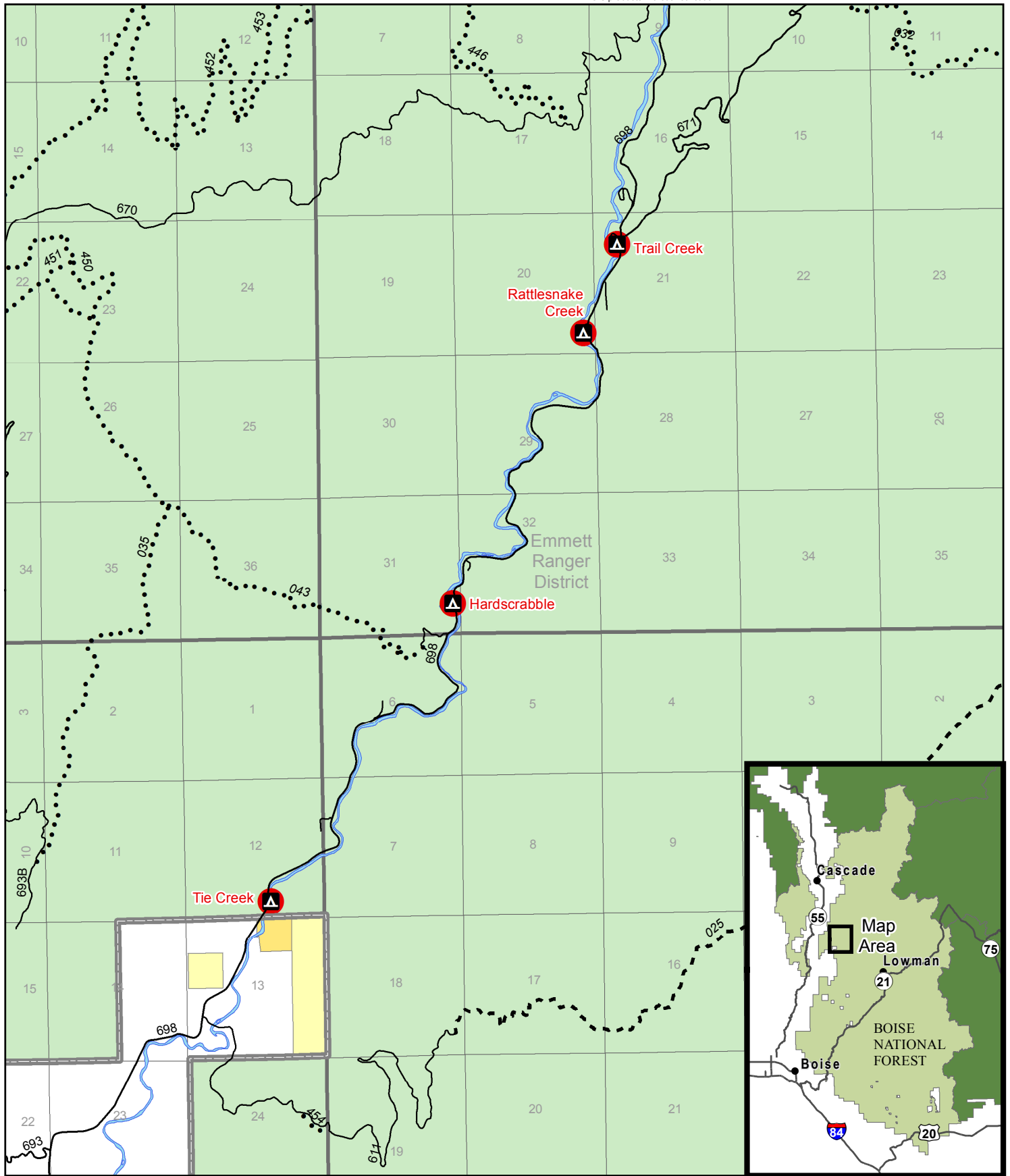
- Closed Site
  - Campground
  - Cabin/Lookout
  - Hot Spring
  - PLSS Township
  - USFS
- Camping Area
  - Trailhead
  - Non-Motorized Trail
  - Motorized Trail
  - BNF and Other Roads
  - PLSS Section
  - Private
- Interpretive Site (Admin)

0 0.25 0.5 1 Miles



**Boise National Forest**  
COVID-19 Response Recreation Site Closures  
Order Number - 0402-00-59

The U.S. Department of Agriculture, Forest Service uses the most current and complete data available. GIS data and product accuracy may vary. They may be developed from sources of differing accuracy, accurate only at certain scales, based on modeling or interpretation, incomplete while being revised or created, etc. Using GIS products for purposes other than those for which they were created, may yield inaccurate or misleading results. The Forest Service reserves the right to correct, modify, or replace GIS products without notification.



Closed Site



Campground

--- Non-Motorized Trail

..... Motorized Trail

— BNF and Other Roads

PLSS Township

PLSS Section

USFS

BLM

Private

Bureau of Reclamation

0 0.25 0.5 1 Miles





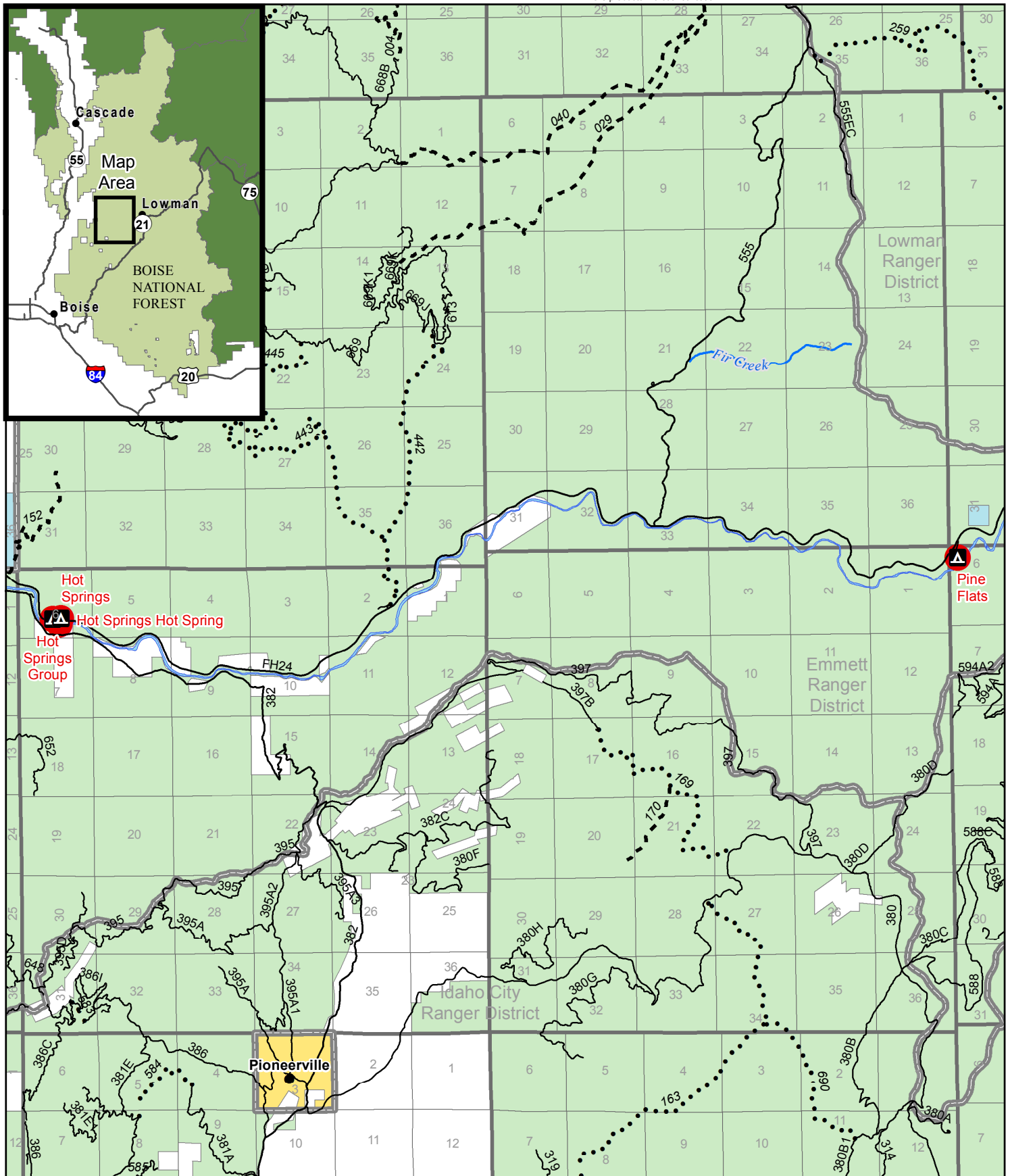


# Boise National Forest

## COVID-19 Response Recreation Site Closures

Order Number - 0402-00-59

The U.S. Department of Agriculture, Forest Service uses the most current and complete data available. GIS data and product accuracy may vary. They may be developed from sources of differing accuracy, accurate only at certain scales, based on modeling or interpretation, incomplete while being revised or created, etc. Using GIS products for purposes other than those for which they were created, may yield inaccurate or misleading results. The Forest Service reserves the right to correct, modify, or replace GIS products without notification.



- Closed Site
- Campground
- Non-Motorized Trail
- Motorized Trail
- BNF and Other Roads
- PLSS Township
- PLSS Section
- USFS
- BLM
- State
- Private
- Bureau of Reclamation

0 0.5 1 2 Miles

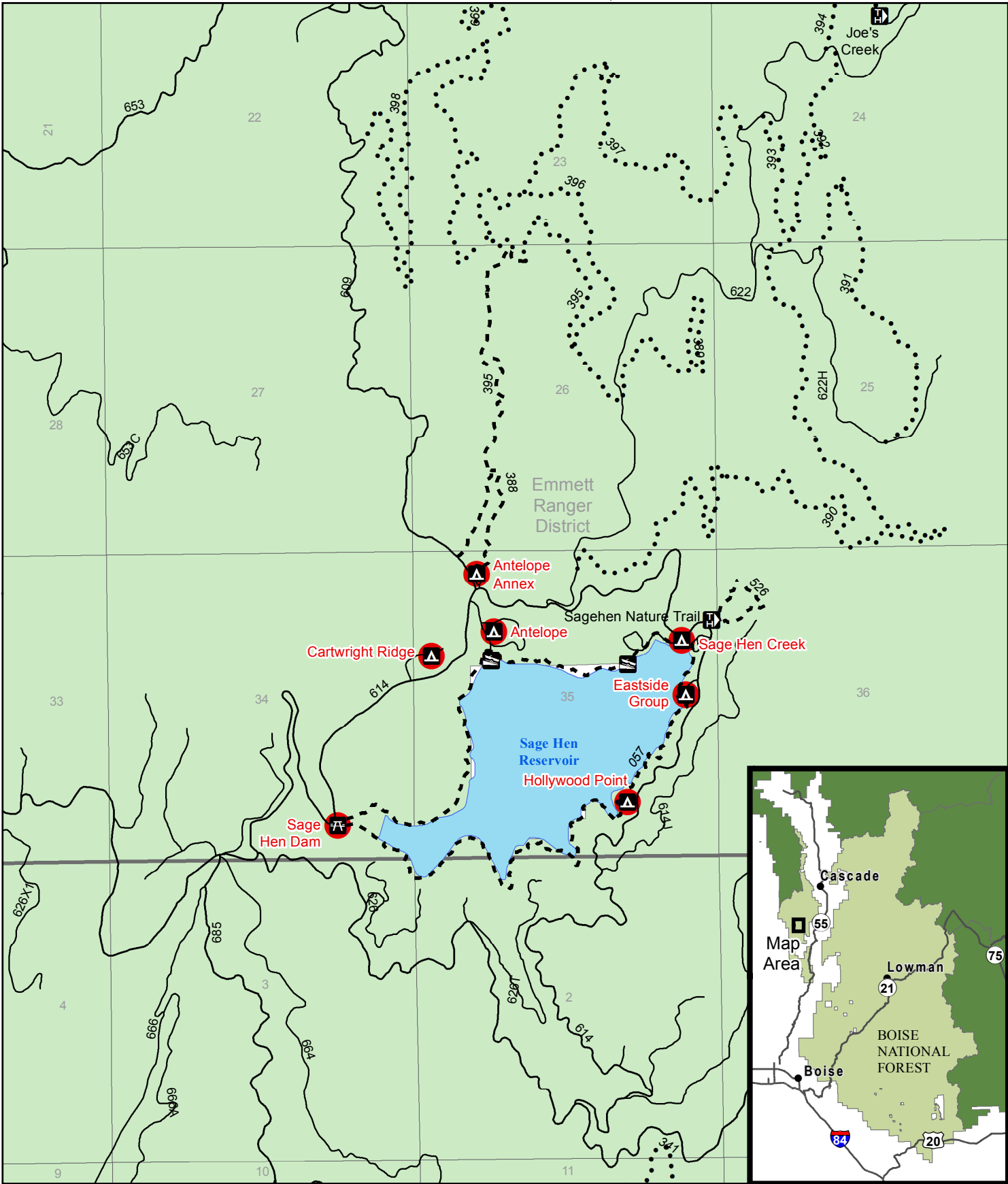


# Boise National Forest

## COVID-19 Response Recreation Site Closures

Order Number - 0402-00-59

The U.S. Department of Agriculture, Forest Service uses the most current and complete data available. GIS data and product accuracy may vary. They may be developed from sources of differing accuracy, accurate only at certain scales, based on modeling or interpretation, incomplete while being revised or created, etc. Using GIS products for purposes other than those for which they were created, may yield inaccurate or misleading results. The Forest Service reserves the right to correct, modify, or replace GIS products without notification.



- Closed Site
- Boating Site
- Picnic Site
- Non-Motorized Trail
- PLSS Township
- USFS
- Campground
- Trailhead
- Motorized Trail
- PLSS Section
- Private
- BNF and Other Roads

0 0.2 0.4 0.8 Miles

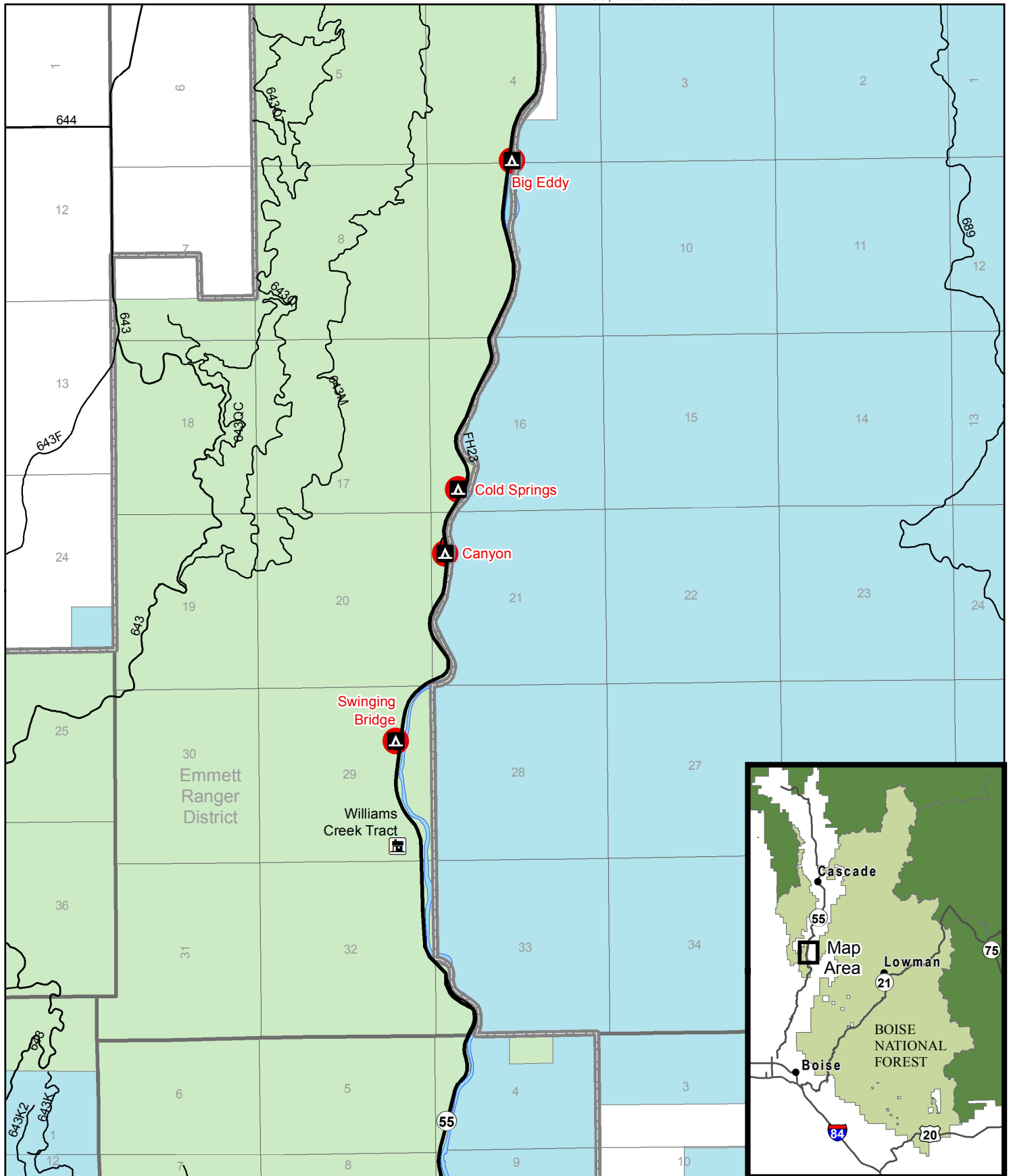


# Boise National Forest

## COVID-19 Response Recreation Site Closures

Order Number - 0402-00-59

The U.S. Department of Agriculture, Forest Service uses the most current and complete data available. GIS data and product accuracy may vary. They may be developed from sources of differing accuracy, accurate only at certain scales, based on modeling or interpretation, incomplete while being revised or created, etc. Using GIS products for purposes other than those for which they were created, may yield inaccurate or misleading results. The Forest Service reserves the right to correct, modify, or replace GIS products without notification.



● Closed Site

▲ Campground

— BNF and Other Roads

▬ PLSS Township

USFS

🏠 Recreation Residence

— Major Road

▬ PLSS Section

State

Private

0 0.25 0.5 1 Miles

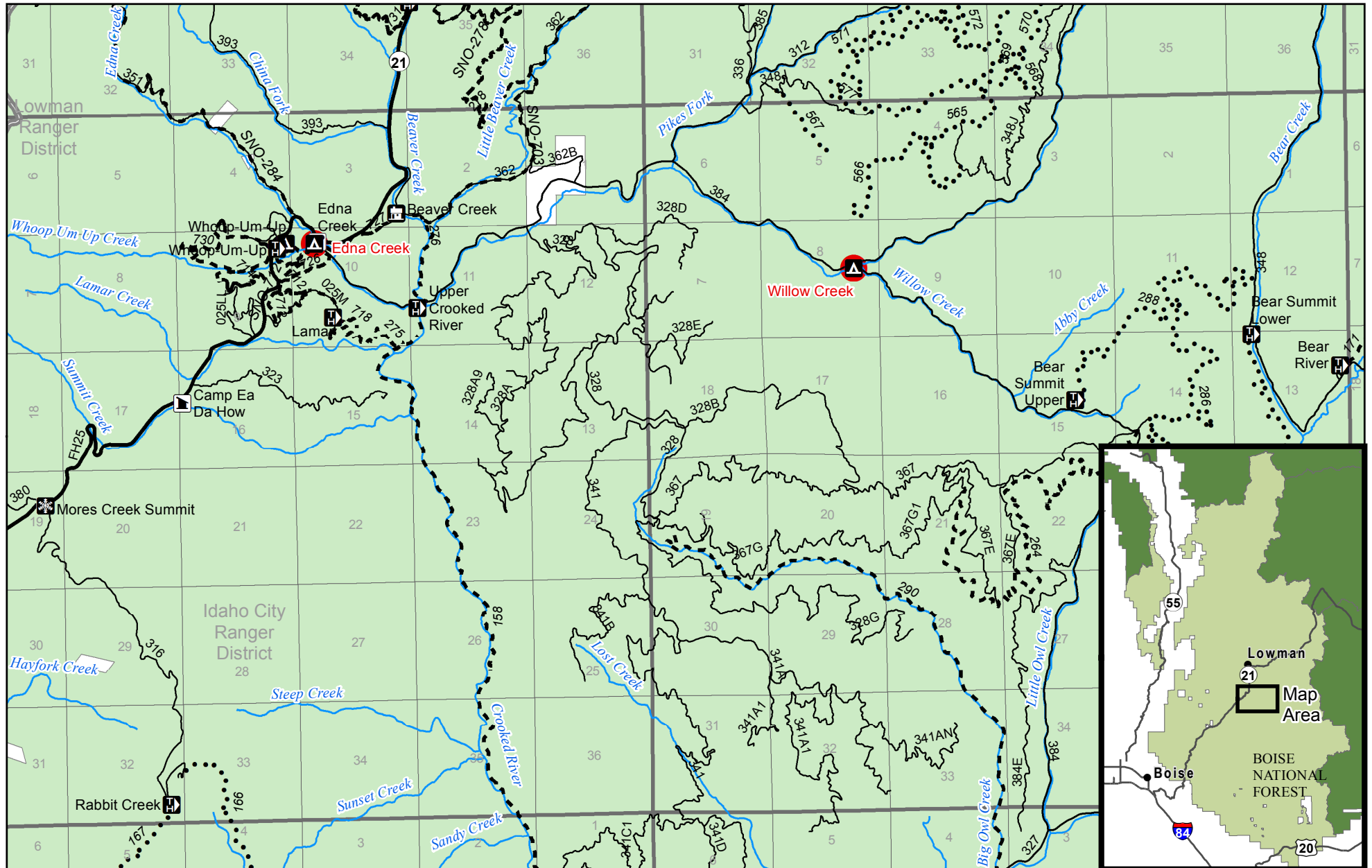


# Boise National Forest

## COVID-19 Response Recreation Site Closures

Order Number - 0402-00-059

The U.S. Department of Agriculture, Forest Service uses the most current and complete data available. GIS data and product accuracy may vary. They may be developed from sources of differing accuracy, accurate only at certain scales, based on modeling or interpretation, incomplete while being revised or created, etc. Using GIS products for purposes other than those for which they were created, may yield inaccurate or misleading results. The Forest Service reserves the right to correct, modify, or replace GIS products without notification.



- |  |                           |  |            |  |                   |  |                     |  |               |  |         |
|--|---------------------------|--|------------|--|-------------------|--|---------------------|--|---------------|--|---------|
|  | Closed Site               |  | Campground |  | Organization Site |  | Non-Motorized Trail |  | PLSS Township |  | USFS    |
|  | Interpretive Site (Minor) |  | Snowpark   |  | Motorized Trail   |  | Major Road          |  | PLSS Section  |  | Private |
|  | Cabin/Lookout             |  | Trailhead  |  | BNF Major Roads   |  |                     |  |               |  |         |

0 0.375 0.75 1.5 Miles

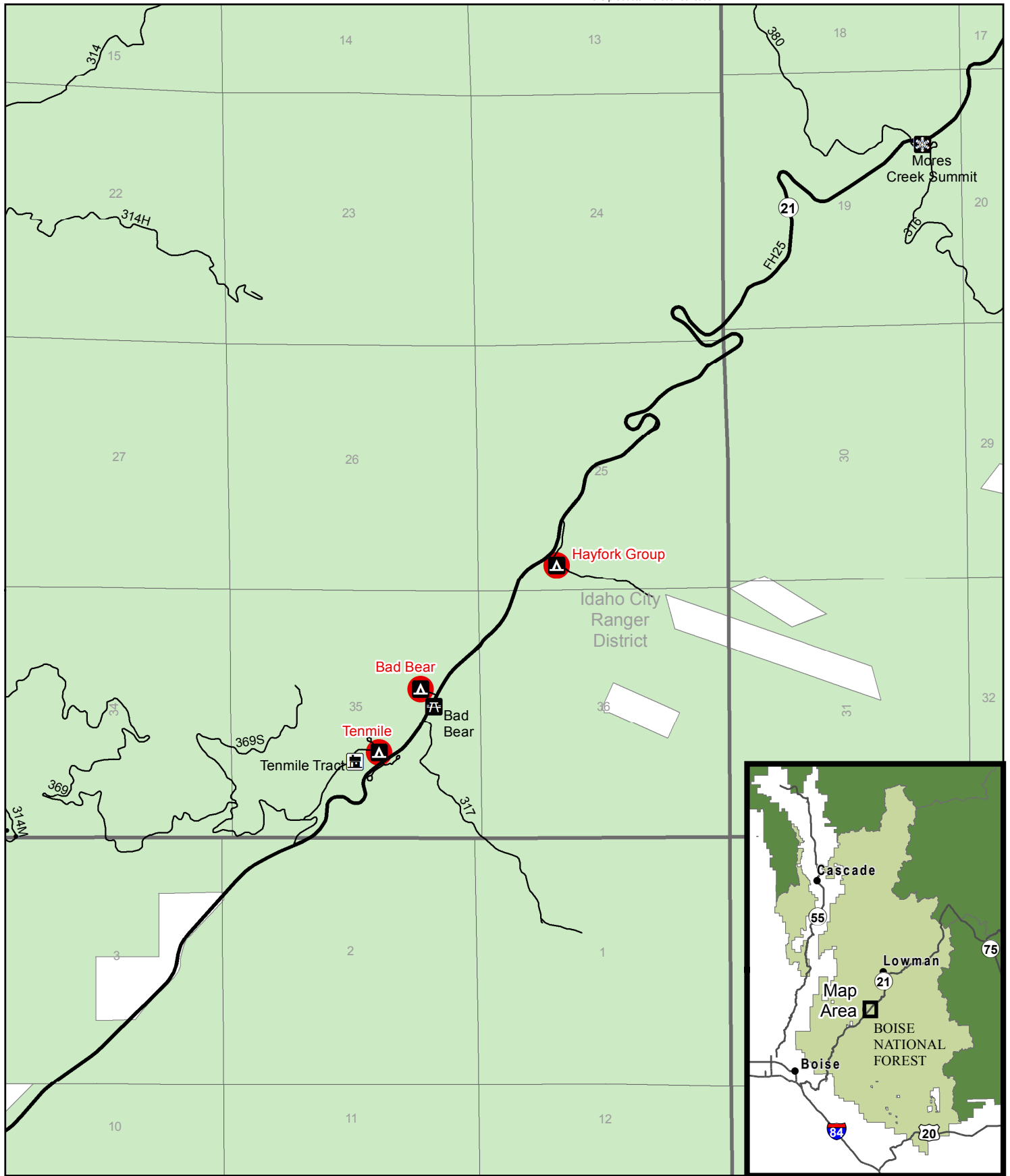


# Boise National Forest

## COVID-19 Response Recreation Site Closures

Order Number - 0402-00-59

The U.S. Department of Agriculture, Forest Service uses the most current and complete data available. GIS data and product accuracy may vary. They may be developed from sources of differing accuracy, accurate only at certain scales, based on modeling or interpretation, incomplete while being revised or created, etc. Using GIS products for purposes other than those for which they were created, may yield inaccurate or misleading results. The Forest Service reserves the right to correct, modify, or replace GIS products without notification.



- Closed Site
- Campground
- Recreation Residence
- Motorized Trail
- BNF and Other Roads
- Major Road
- Picnic Site
- Snowpark
- PLSS Township
- PLSS Section
- USFS
- Private

0 0.25 0.5 1 Miles



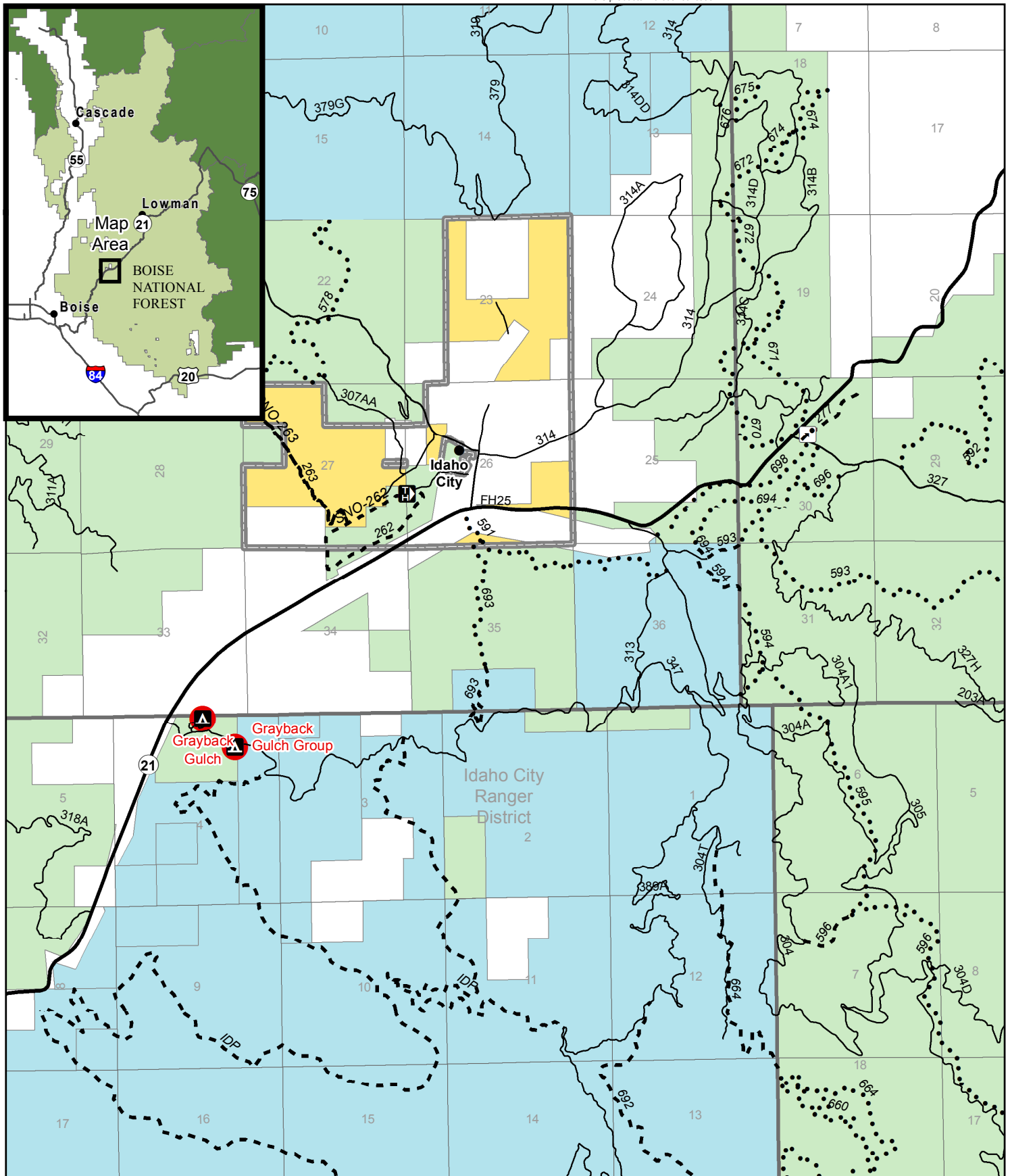


# Boise National Forest

## COVID-19 Response Recreation Site Closures

Order Number - 0402-00-59

The U.S. Department of Agriculture, Forest Service uses the most current and complete data available. GIS data and product accuracy may vary. They may be developed from sources of differing accuracy, accurate only at certain scales, based on modeling or interpretation, incomplete while being revised or created, etc. Using GIS products for purposes other than those for which they were created, may yield inaccurate or misleading results. The Forest Service reserves the right to correct, modify, or replace GIS products without notification.



● Closed Site

▲ Campground

□ Trailhead

▭ PLSS Township

▭ USFS

◻ Interpretive Site (Minor)

--- Non-Motorized Trail

▭ PLSS Section

▭ BLM

..... Motorized Trail

▭ State

— BNF and Other Roads

▭ Private

— Major Road

0 0.25 0.5 1 Miles

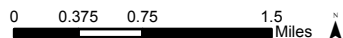
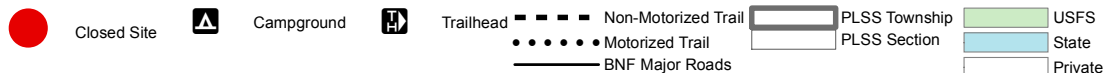
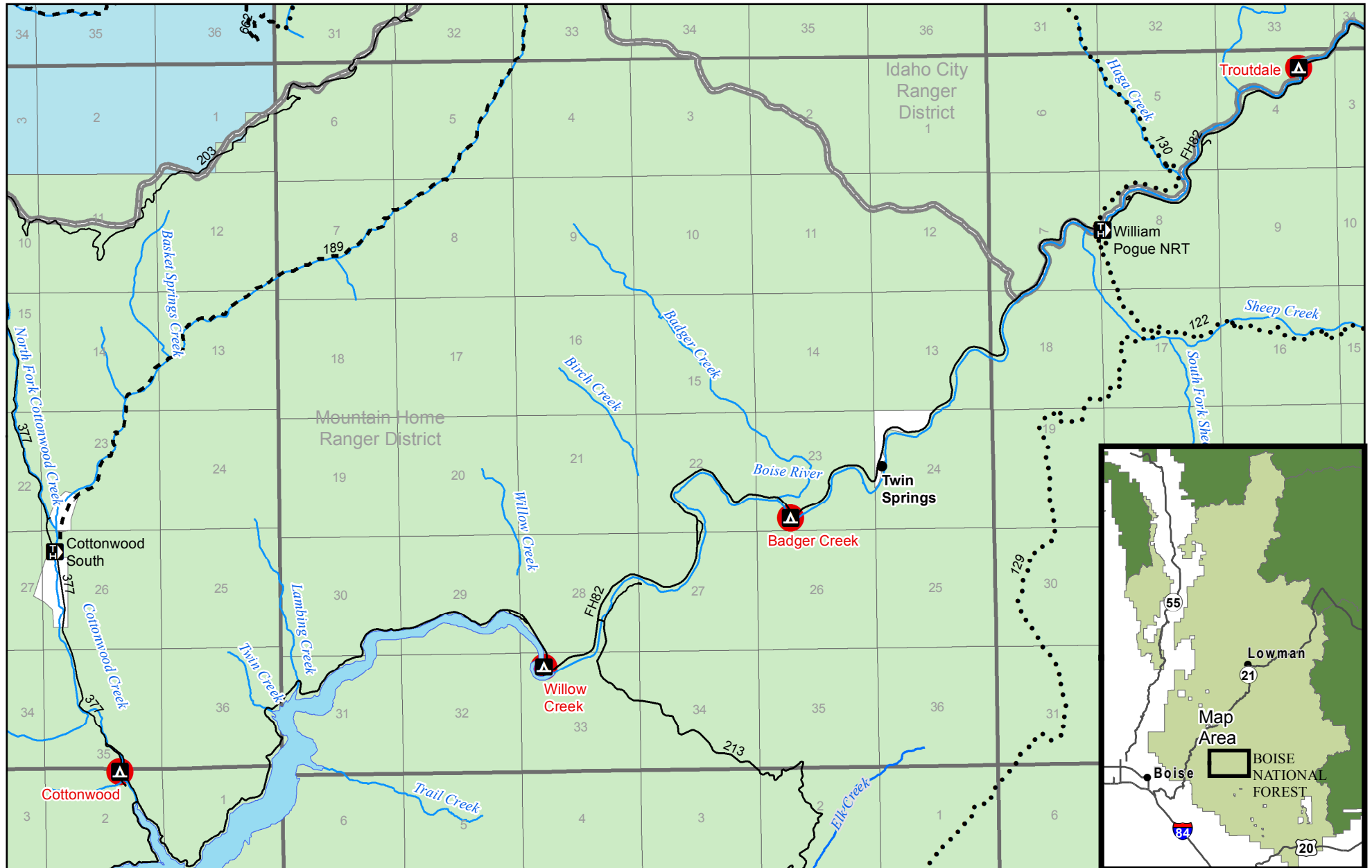


# Boise National Forest

## COVID-19 Response Recreation Site Closures

Order Number - 0402-00-059

The U.S. Department of Agriculture, Forest Service uses the most current and complete data available. GIS data and product accuracy may vary. They may be developed from sources of differing accuracy, accurate only at certain scales, based on modeling or interpretation, incomplete while being revised or created, etc. Using GIS products for purposes other than those for which they were created, may yield inaccurate or misleading results. The Forest Service reserves the right to correct, modify, or replace GIS products without notification.



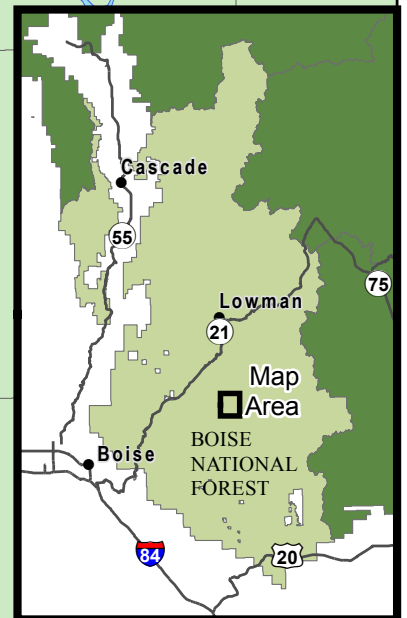
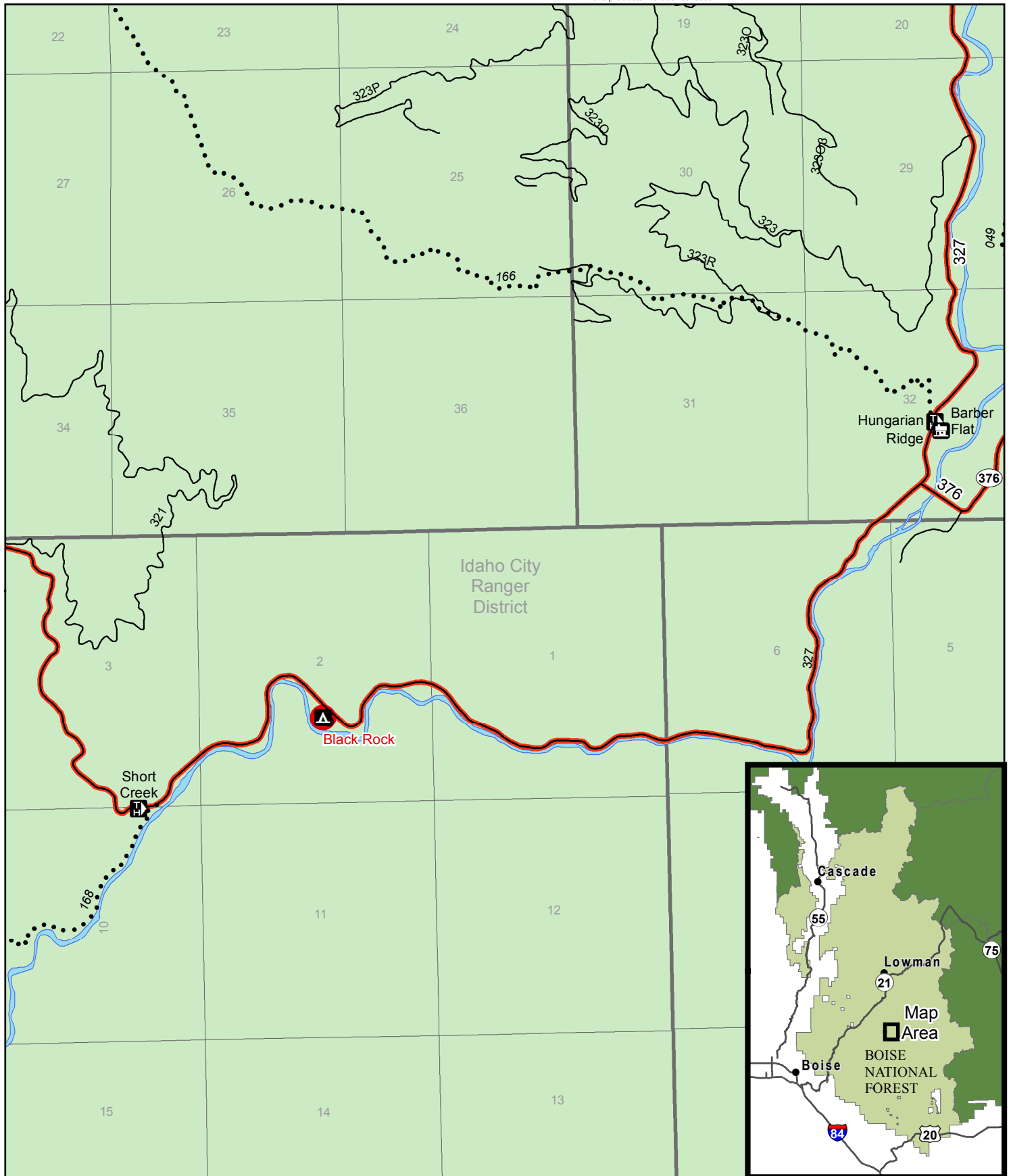


# Boise National Forest

## COVID-19 Response Recreation Site Closures

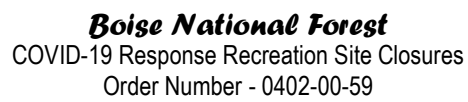
Order Number - 0402-00-59

The U.S. Department of Agriculture, Forest Service uses the most current and complete data available. GIS data and product accuracy may vary. They may be developed from sources of differing accuracy, accurate only at certain scales, based on modeling or interpretation, incomplete while being revised or created, etc. Using GIS products for purposes other than those for which they were created, may yield inaccurate or misleading results. The Forest Service reserves the right to correct, modify, or replace GIS products without notification.

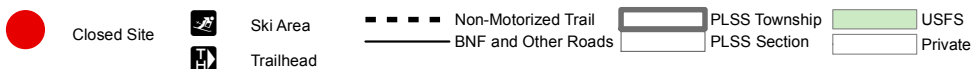
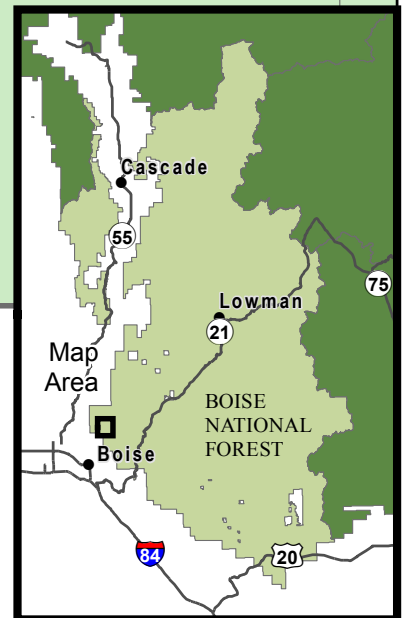


- Closed Site
- Roads Closed to Highway Legal Motorized Vehicles
- Campground
- Cabin/Lookout
- Trailhead
- Motorized Trail
- BNF and Other Roads
- PLSS Township
- PLSS Section
- USFS

0 0.25 0.5 1 Miles



The map displays the Mountain Home Ranger District, which is divided into several land parcels. The parcels are labeled with numbers: 1, 5, 6, 13, 17, 18, 19, 20, 21, 22, 24, 25, 27, 28, 29, 30, 31, 32, 35, 36, 37, 38, 39, 40, 41, 42, 43, 44, 45, 46, 47, 48, 49, 50, 51, 52, 53, 54, 55, 56, 57, 58, 59, 60, 61, 62, 63, 64, 65, 66, 67, 68, 69, 70, 71, 72, 73, 74, 75, 76, 77, 78, 79, 80, 81, 82, 83, 84, 85, 86, 87, 88, 89, 90, 91, 92, 93, 94, 95, 96, 97, 98, 99, 100. The map also shows various roads, including US Highway 20, US Highway 21, and US Highway 84. A red dot marks the location of Stack Rock. An inset map in the bottom right corner shows the location of the Mountain Home Ranger District within the Boise National Forest, with labels for Cascade, Lowman, Boise, and the Map Area.



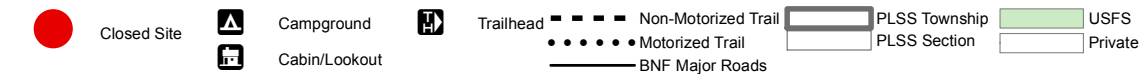
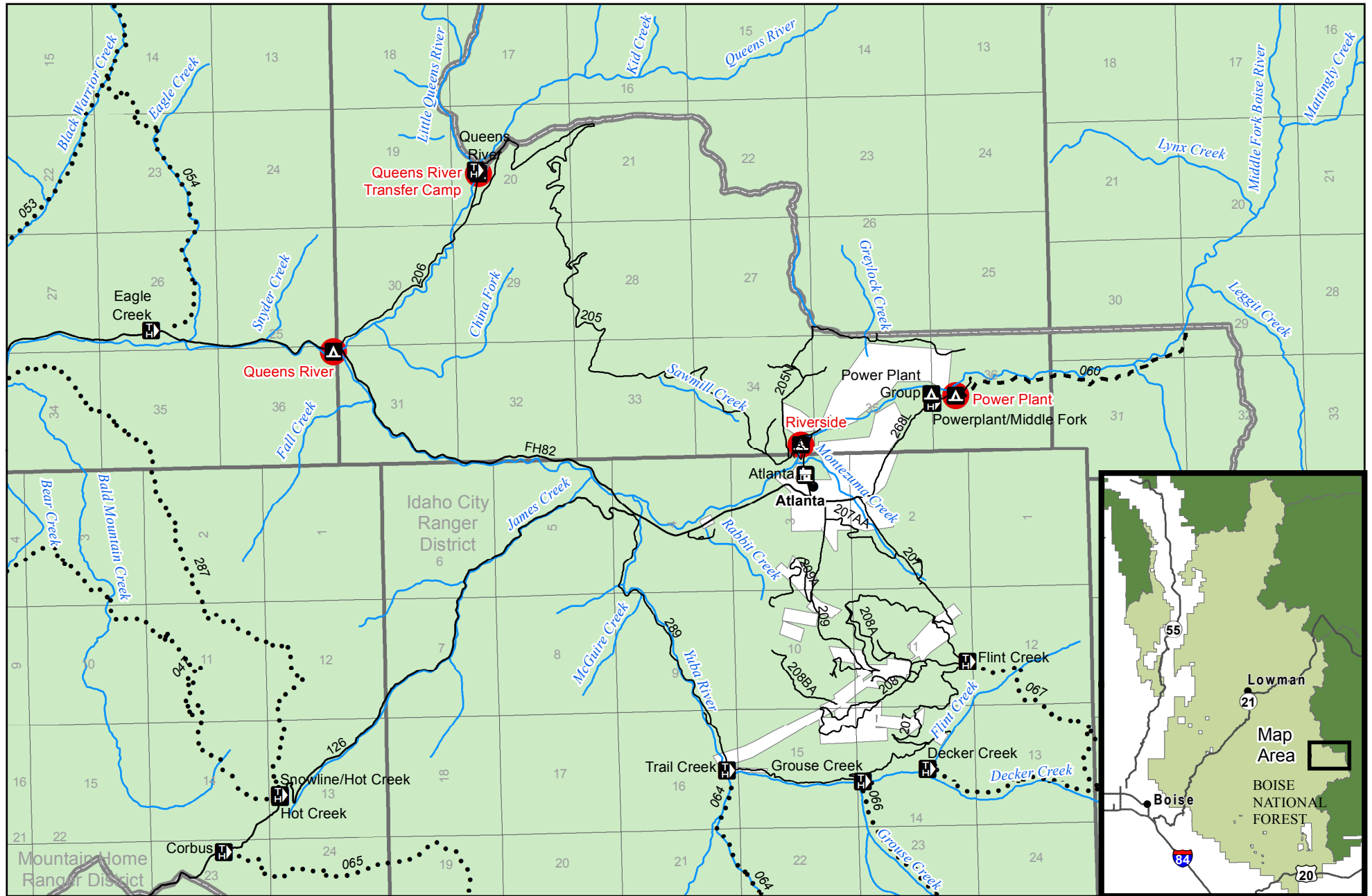


# Boise National Forest

## COVID-19 Response Recreation Site Closures

Order Number - 0402-00-059

The U.S. Department of Agriculture, Forest Service uses the most current and complete data available. GIS data and product accuracy may vary. They may be developed from sources of differing accuracy, accurate only at certain scales, based on modeling or interpretation, incomplete while being revised or created, etc. Using GIS products for purposes other than those for which they were created, may yield inaccurate or misleading results. The Forest Service reserves the right to correct, modify, or replace GIS products without notification.



0 0.375 0.75 1.5 Miles



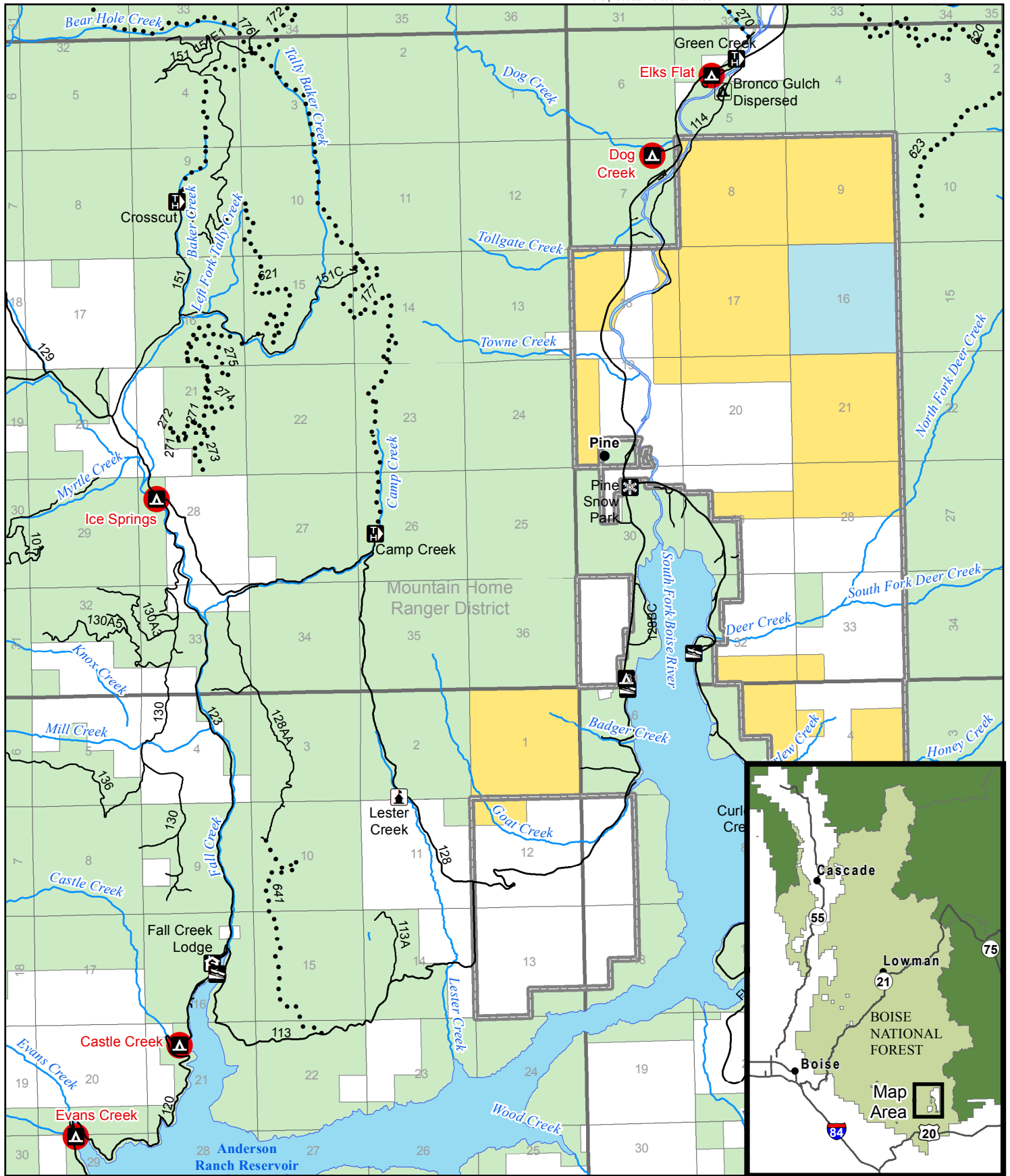


# Boise National Forest

## COVID-19 Response Recreation Site Closures

Order Number - 0402-00-59

The U.S. Department of Agriculture, Forest Service uses the most current and complete data available. GIS data and product accuracy may vary. They may be developed from sources of differing accuracy, accurate only at certain scales, based on modeling or interpretation, incomplete while being revised or created, etc. Using GIS products for purposes other than those for which they were created, may yield inaccurate or misleading results. The Forest Service reserves the right to correct, modify, or replace GIS products without notification.



- |                      |              |                           |                     |         |
|----------------------|--------------|---------------------------|---------------------|---------|
| Closed Site          | Boating Site | Interpretive Site (Admin) | Non-Motorized Trail | USFS    |
| Campground           | Snowpark     | Motorized Trail           | BNF and Other Roads | BLM     |
| Camping Area         | Trailhead    | PLSS Township             | PLSS Section        | State   |
| Hotel, Lodge, Resort |              |                           |                     | Private |

0 0.5 1 2 Miles

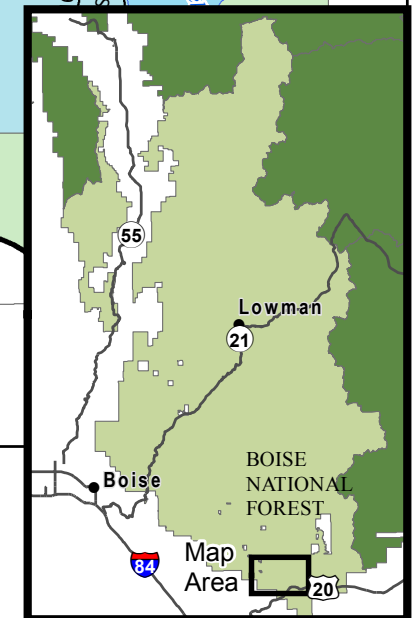
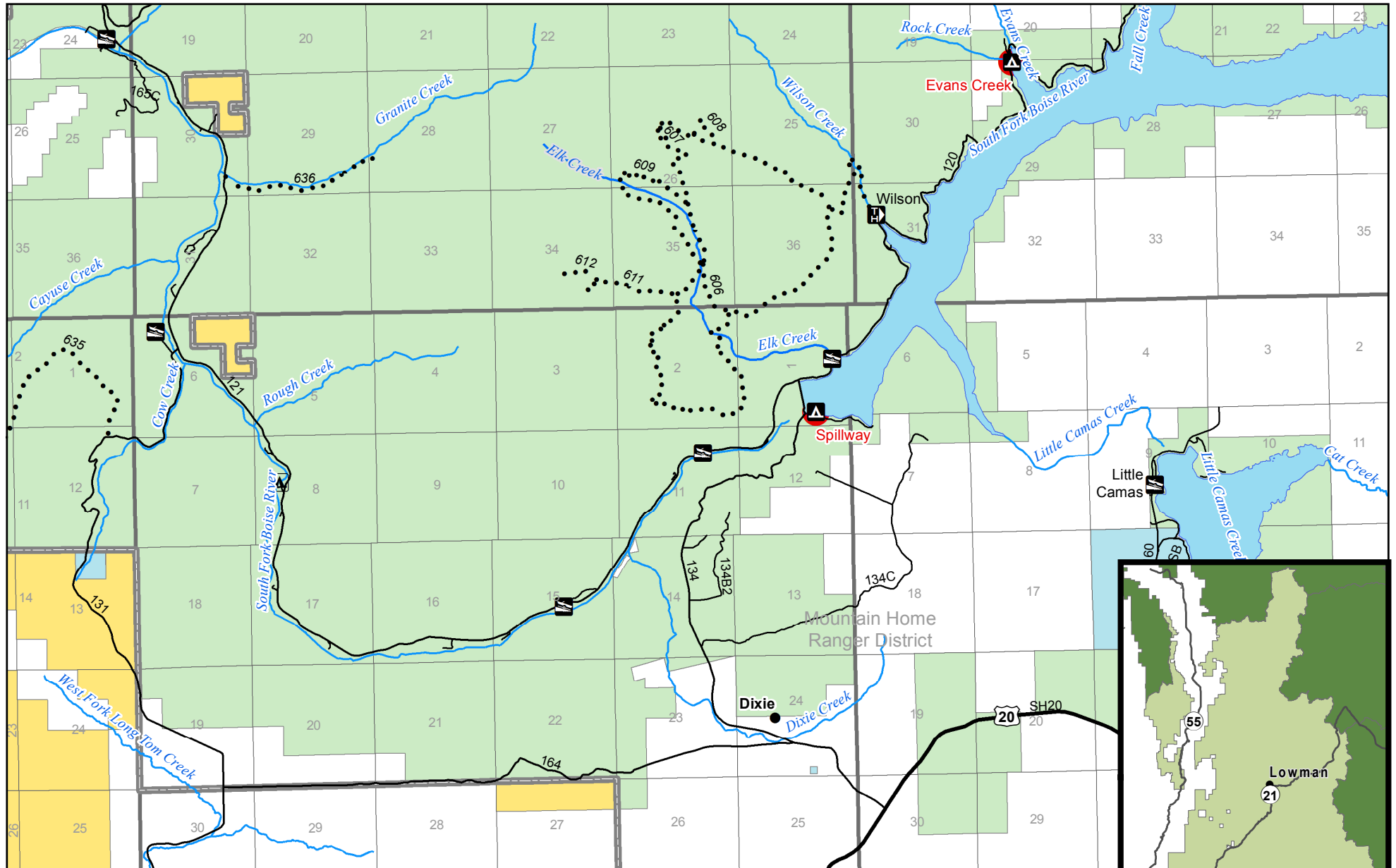


# Boise National Forest

## COVID-19 Response Recreation Site Closures

Order Number - 0402-00-059

The U.S. Department of Agriculture, Forest Service uses the most current and complete data available. GIS data and product accuracy may vary. They may be developed from sources of differing accuracy, accurate only at certain scales, based on modeling or interpretation, incomplete while being revised or created, etc. Using GIS products for purposes other than those for which they were created, may yield inaccurate or misleading results. The Forest Service reserves the right to correct, modify, or replace GIS products without notification.



- |  |             |  |              |  |              |  |                 |  |            |  |                 |  |               |  |              |  |      |  |     |  |       |  |         |
|--|-------------|--|--------------|--|--------------|--|-----------------|--|------------|--|-----------------|--|---------------|--|--------------|--|------|--|-----|--|-------|--|---------|
|  | Closed Site |  | Boating Site |  | Camping Area |  | Motorized Trail |  | Major Road |  | BNF Major Roads |  | PLSS Township |  | PLSS Section |  | USFS |  | BLM |  | State |  | Private |
|--|-------------|--|--------------|--|--------------|--|-----------------|--|------------|--|-----------------|--|---------------|--|--------------|--|------|--|-----|--|-------|--|---------|

0 0.375 0.75 1.5 Miles