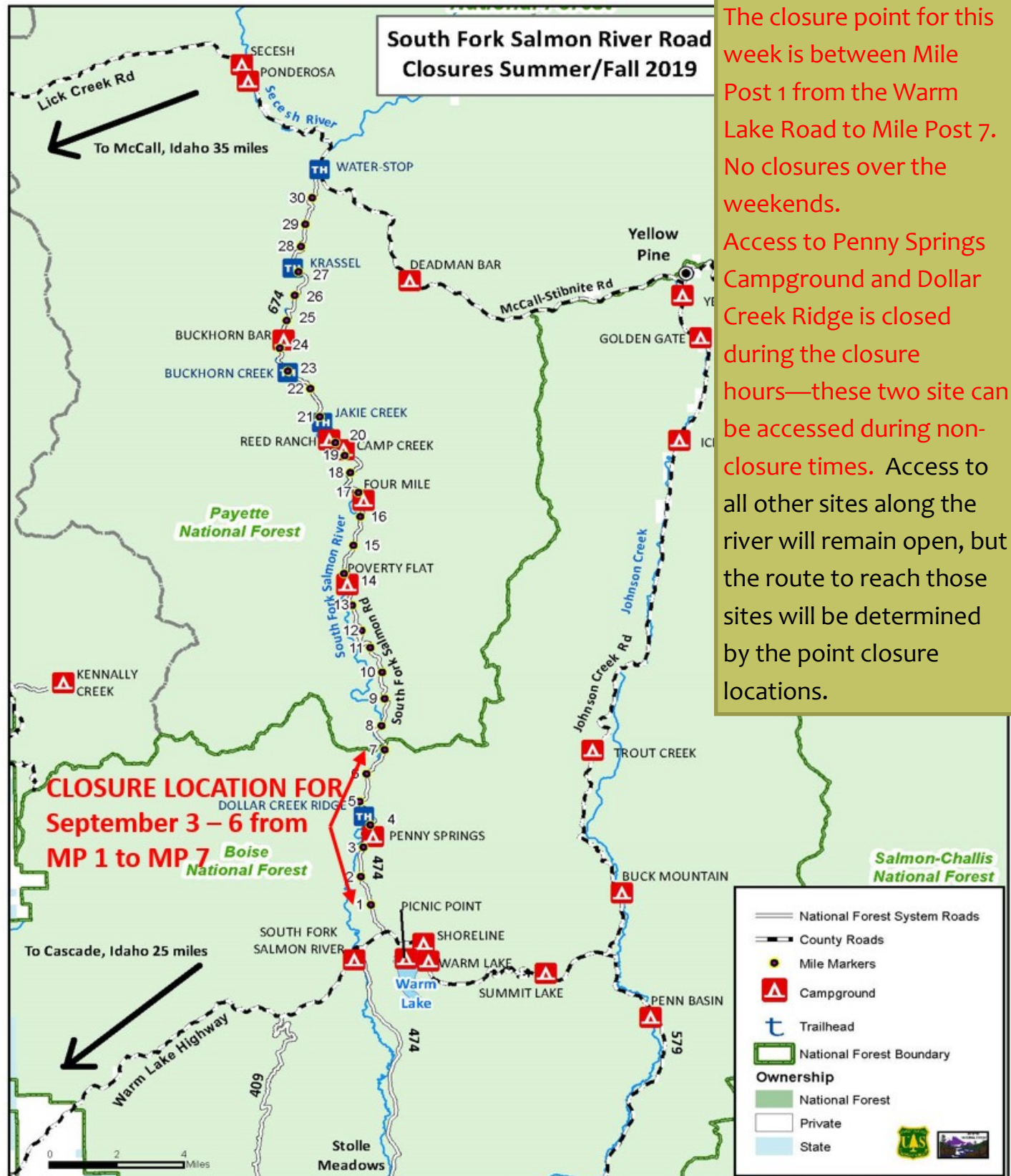


# SOUTH FORK SALMON RIVER ROAD REHABILITATION PROJECT—September 3—6



The Payette and Boise National Forests are rehabilitating the  
South Fork Salmon River Road (FS Road 474/674)

The closure point for this week is between Mile Post 1 from the Warm Lake Road to Mile Post 7. No closures over the weekends. Access to Penny Springs Campground and Dollar Creek Ridge is closed during the closure hours—these two sites can be accessed during non-closure times. Access to all other sites along the river will remain open, but the route to reach those sites will be determined by the point closure locations.





# SOUTH FORK SALMON RIVER ROAD REHABILITATION PROJECT

**Use these routes to reach locations along the river for the week of September 3—6**  
**Lick Creek Road**

- Krassel Work Center
- Buckhorn Bar Campground
- Buckhorn Creek Trailhead
- Jakie & Phoebe Creek Trailheads
- Reed Ranch
- Camp Creek Campground
- Four Mile Campground
- Poverty Flat Campground
- Poverty Flat Overlook
- All points north of Mile Post 7

**No Access From Warm Lake Road**

- Road is closed at Mile Post 1 from the Warm Lake Intersection
- No access to Dollar Creek Ridge Trailhead during closure hours
- No access to Penny Springs Campground during closure hours

## LEARN MORE

Visit: <http://www.fs.usda.gov/goto/SouthForkRoad>

Questions: [brian.d.harris@usda.gov](mailto:brian.d.harris@usda.gov)  
To Receive weekly e-mail updates:  
<http://www.fs.usda.gov/goto/SothForkRoadNewsletter>



## WHAT WORK IS BEING DONE?

The purpose of the project is the repair asphalt, surface drainage, and subgrade issues. Roadway safety will also be improved by curve realignments and conducting fill slope repairs.

- Works is being done on the Boise and the Payette National Forest sections of the road.
- Construction is expected to go into the spring and summer of 2020, with a winter shutdown.

