

## OPPORTUNITY FOR PUBLIC COMMENT

<b>District:</b>	Payette National Forest, Krassel Ranger District
<b>Project Name:</b>	Krassel Ranger District Developed & Dispersed Site Improvement Project
<b>Responsible Official:</b>	Anthony Botello, Krassel District Ranger
<b>Project Contact:</b>	Joshua Simpson; <a href="mailto:jtsimpson@fs.fed.us">jtsimpson@fs.fed.us</a> ; 208-634-0616
<b>Scoping Period:</b>	Comments requested by December 28, 2018
<b>Submit Comments:</b>	Via webform on the project webpage
<b>Project Webpage:</b>	<a href="http://www.fs.usda.gov/project/?project=55120">http://www.fs.usda.gov/project/?project=55120</a>

**Project Description:** The Krassel Ranger District Recreation Program wants to conduct a multi-faceted series of replacement in kind and minor upgrades within the developed campgrounds and dispersed sites within the General Forest Areas of the South Fork corridor, Lick Creek corridor, East Fork South Fork corridor and Big Creek areas. Work will consist of the removal of existing site furniture such as fire pits and pedestal grills and replacement with new ones; replacement of older wooden-style vault toilets with new CXT style model vault toilets, removal and replacement of trailhead kiosks and other interpretative kiosks, removal of existing fee tubes and replacement with newer style, modern fee tubes.

It is anticipated that each fee tube replacement will require approximately a 3' diameter x 3' deep hole to properly and securely install. Each kiosk will also require the same dimension of hole to be dug for each post, with most kiosks requiring 2 holes and the larger multi-panel kiosks requiring 3 holes. Work will be conducted by seasonal temp employees, and permanent employees where available, as well as, contractors for work outside of Forest Service crew ability, such as for the CXT installations. Removal of site furniture and fee tubes will be done using a combi jack-hammer to break up the concrete bases on these items or old-fashioned brute force with a sledgehammer. Old concrete will be disposed of appropriately at the county land fill new installation of replacement furniture will include the use of new concrete. Furniture will be replaced in-situ with very little deviation, where appropriate. Work will begin in May of 2019 and is expected to continue through the 2020 field season until finished sometime in the 2021 summer season. Priority for site furniture will be determined in concert with Heritage staff by identifying campgrounds and dispersed areas where little to no cultural resources are present. Those sites with complex cultural resource conditions will be consulted on and a mitigation plan will be developed that will allow for the work to occur while preserving the integrity of the cultural sites.

Vault toilet removal will be conducted by Forest Service road crew or Recreation Staff and likely involve use of a backhoe or mini-excavator. Each vault will be pumped of contents prior to removal. Removal includes the wooden structure, black poly vent tube and associated metal vents and hardware and concrete vault or metal culvert depending on the type of “vault”. All materials will be hauled to the landfill by the road crew or Recreation Staff. Subsequent installation of new CXT’s will be conducted by CXT contractors. Finish work, such as grading and path re-establishment, will be conducted by Forest Service crews. Overall footprint of disturbance for each vault toilet install will be 20’ x 20’ with the vault depth around 8 feet. Further, it may be practical to apply an appropriate seed mix via hydro-mulch or hand seeding, or planting of larger saplings or shrubs around the freshly installed CXT’s to facilitate quicker recovery to the ground cover vegetation once all grading and other dirt work has been finished.

Interpretative kiosks and trailhead kiosks information panels and content will be reviewed and updated in partnership with Fisheries, Wildlife and Heritage program managers to ensure content is accurate, relevant and displayed appropriately.

As of the time of this review, most of the site furniture has been obtained, with anticipated additional items being purchased over the summer seasons of 2019 and 2020. No funding has been made available for the CXT component of this project yet or for the interpretative kiosks and trailhead kiosks, but multiple funding streams are being pursued.

All materials available for salvage will be recycled and repurposed as needed.

**Purpose and Need:** Currently the Krassel Ranger District Developed Recreation Program has 7 Fee Area Campgrounds and 4 minor-developed dispersed camping areas. There is a need to upgrade much of the infrastructure currently deployed in these sites as the service life of this infrastructure has either been exceeded or is very close to being exceeded. Some of the fire pits and pedestal grills are thoroughly rusted out and are unserviceable and non-functional, with many others approaching this condition. The purpose of this project is to authorize the necessary work to upgrade these infrastructure items such as removal and reinstallation of metal campfire rings, pedestal grills, fee tubes and vault toilets over the course of the next few years.

This project is being evaluated as a categorical exclusion under the National Environmental Policy Act as provided for in 36 CFR 220.6(d)(3): *Repair and maintenance of administrative sites*. A Decision Memo is not required for this category but one will be prepared at the discretion of the District Ranger.

Under this categorical exclusion there are no required designated public comment periods for this project, but the District Ranger has elected to use this “scoping” phase as an opportunity for public input due to the anticipated level of public interest.

**Project Area:** The project area encompasses all Developed Sites, Dispersed Sites, Trailheads and Vault Toilets within the Krassel Ranger District boundaries within Management Areas 12 and 13. See attached map.

All US Forest Service lands within the following: T17N, R6E; T18N, R6E; T19N, R6E; T19N, R7E; T19N, R8E; T19N, R11E; T20N, R4E; T20N, R5E; T20N, R6E; T20N, R9E; T21N, R9E & T22N, R9E Boise Meridian, Valley and Idaho Counties, Idaho.

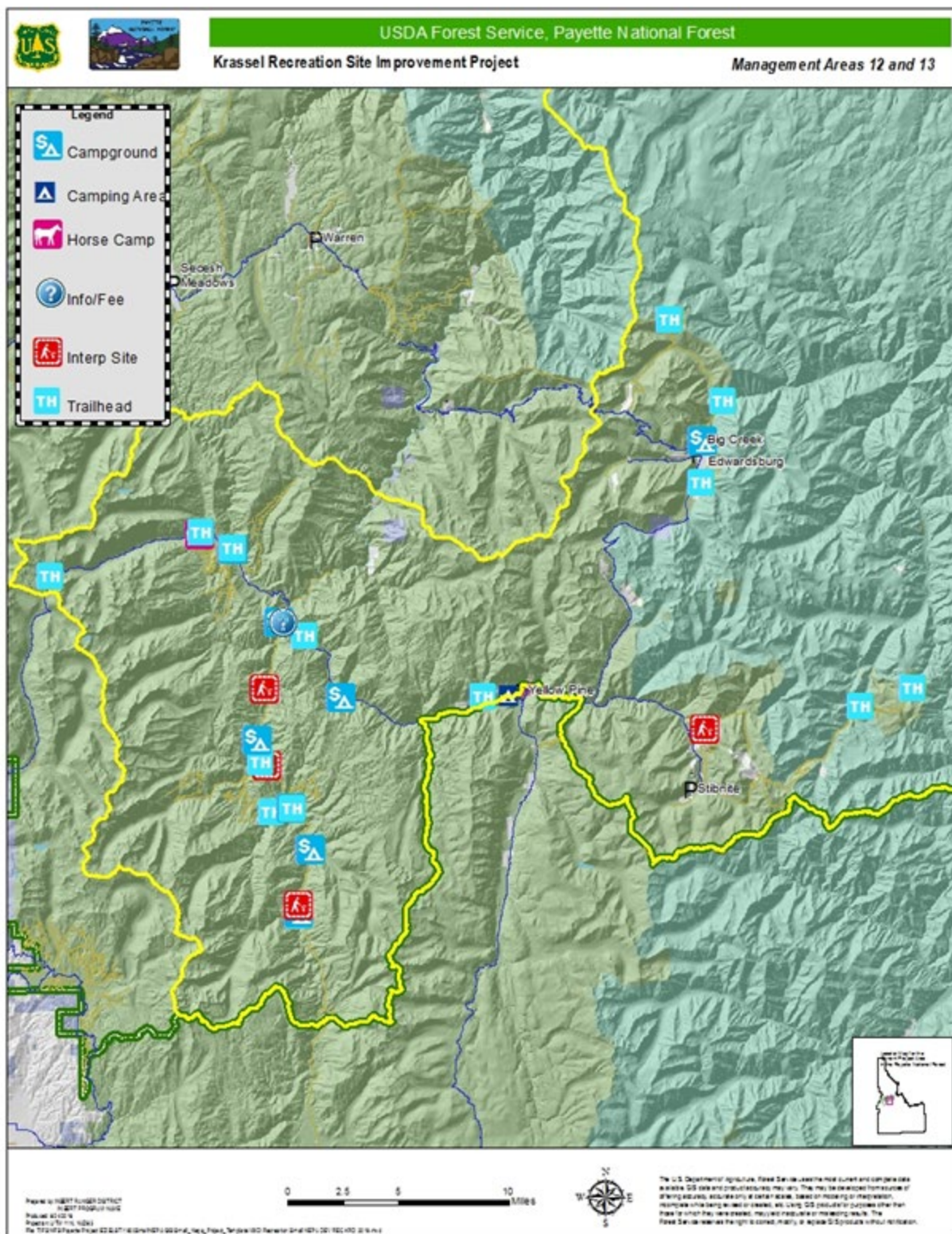


Figure 1. Map of Krassel Recreation Site Improvement Project