



# Housekeeping

- Introductions
- Teams Functions
- Contribution
- Respecting others
- Confidentiality



# Agenda

- Updates
- Setting Support Line
- Starting School
- Supporting Children's Emotional Health and Well-being
- Online Safety
- Networking/Comfort break
- Childcare Expansion
- West Sussex website feedback and Training opportunities



# Updates

- Updated EYFS from September 2023
- Transition Events now live please refer to the website for further information [Transition events - West Sussex County Council](#)
- Inclusion Funding Applications - Complete or update an 'Action Plan for Inclusion' and return this to [EYFInclusionTeam@westsussex.gov.uk](mailto:EYFInclusionTeam@westsussex.gov.uk) For further information refer to [Diversity and inclusion - West Sussex County Council](#)
- Gypsy, Traveller, Roma, Showmen, Boater Cultural Awareness Training
- Complete Childcare Survey by 12<sup>th</sup> November [Early Years and Childcare | Your Voice West Sussex](#)



Adobe Acrobat  
Document

# NEWS





# Introducing the Setting Support Phonenumber!

We have replaced our TSS Inclusion support process with a new Setting Support Phonenumber. The phonenumber went live on **Tuesday 12th September**. This is an advice and support service for practitioners and childminders from early years or childcare settings on any inclusion topic.

## Things you need to know:

The contact number is: **01243 777807** please then ask to be connected to the 'Setting Support Phonenumber'. It is available every **Tuesday and Thursday afternoon from 1pm to 4pm**.

We cannot accept queries on: Inclusion Funding, Safeguarding, Free Entitlement, Business Support. **This is for Inclusion Practice Support only.**

You will **not** need to complete the TSS Inclusion form

An EYCA will provide advice and strategies over the phone and should it be deemed necessary, your query will be referred for a support visit.

Please note if you require Business and Sustainability Support you must complete the TSS Business Support Request found here: [Request targeted support - West Sussex County Council](#)

A young boy with a backpack is smiling on a sidewalk. The background shows a residential street with trees and a house.

# Starting School Updates

- Starting School Questionnaire
- Transition Events
- Paperwork

Website: [schools.westsussex.gov.uk](https://schools.westsussex.gov.uk) • Email: [school.services@westsussex.gov.uk](mailto:school.services@westsussex.gov.uk)

This Photo by Unknown Author is licensed under [CC BY-NC-ND](https://creativecommons.org/licenses/by-nc-nd/4.0/)

# Supporting Children's Emotional Well-Being and Mental Health

What are the key areas that you think need to be considered to support all children (conception to age 5) to have good emotional well-being and mental health?

What support would help you as an early years practitioner in delivering this goal?

Would you like to be part of a group looking at this so we can develop a framework to improve outcomes for children in this area?

- [Personal, social and emotional development - Help for early years providers - GOV.UK \(education.gov.uk\)](#)
- [Mental health help for under-fives overlooked - report - BBC News](#)
- [Home - Centre for Early Childhood](#)
- [For under fives | Anna Freud](#)

# Promoting online safety

- [Internet safety - Help for early years providers - GOV.UK \(education.gov.uk\)](#)
- [Safeguarding children and protecting professionals in early years settings: online safety guidance for practitioners - GOV.UK \(www.gov.uk\)](#)
- [Spotlight on | PACEY](#)
- [online-safety-under-5s.pdf \(nspcc.org.uk\)](#)
- [Online Safety Advice for Early Years Settings – Safeguarding Network](#)
- [Online Safety and Cyberbullying Awareness for Parents and Carers \(kidscape.org.uk\)](#)
- [Keeping children safe online - Parent's questions answered | Barnardo's \(barnardos.org.uk\)](#)
- [Early Years resources for online safety | Internet Matters](#)
- [Smartie the Penguin | Childnet](#) for free downloadable stories under EYFS



Networking and Comfort Break

# Specialist Advisory Teachers – Early Years SEND Transition

## What we do

We provide advice and guidance to EY settings and schools to support the transition of children with additional needs into Reception. Children can be referred to this service by the EY setting, in the term before they start school.

Schools can request support in the first half of the school year.

## SEND & Inclusion Advisory Team



[Specialist Advisory Teachers for Early Years SEND Transition | West Sussex Services for Schools](#)

# Referrals Process

- We accept referrals for a wide range of children with a variety of additional needs (including children with EHCP's or who are undergoing an EHCNA).
- We may not accept a referral if, for example the WS Sensory Support Team or WS Virtual school are already providing support for the child.



## What might our support look like in the Summer Term?

When a referral is received from an EY setting we will contact the referrer, usually by phone.

We will discuss the main concerns around transition to school for the child and identify next steps for support.

This might be:

- Signposting the setting to Supported Transition paperwork
- Talking through actions to support the child with transition
- A visit to the setting to meet the child
- Attendance at a Supported Transition Meeting



# Childcare Expansion

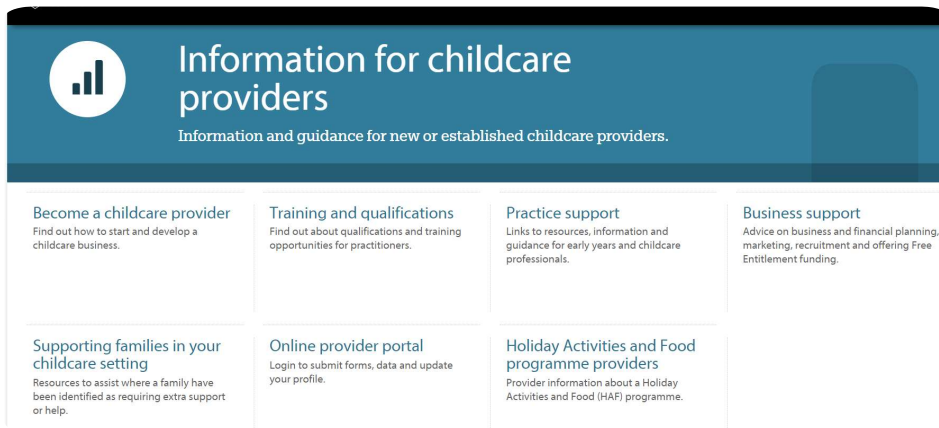


CHALLENGES



SUPPORT

# WSCC Webpages



- Do you use these webpages?
- Finding information
- Scenarios – e.g. if you wanted to find information on XX where would you look?
- Training opportunities

