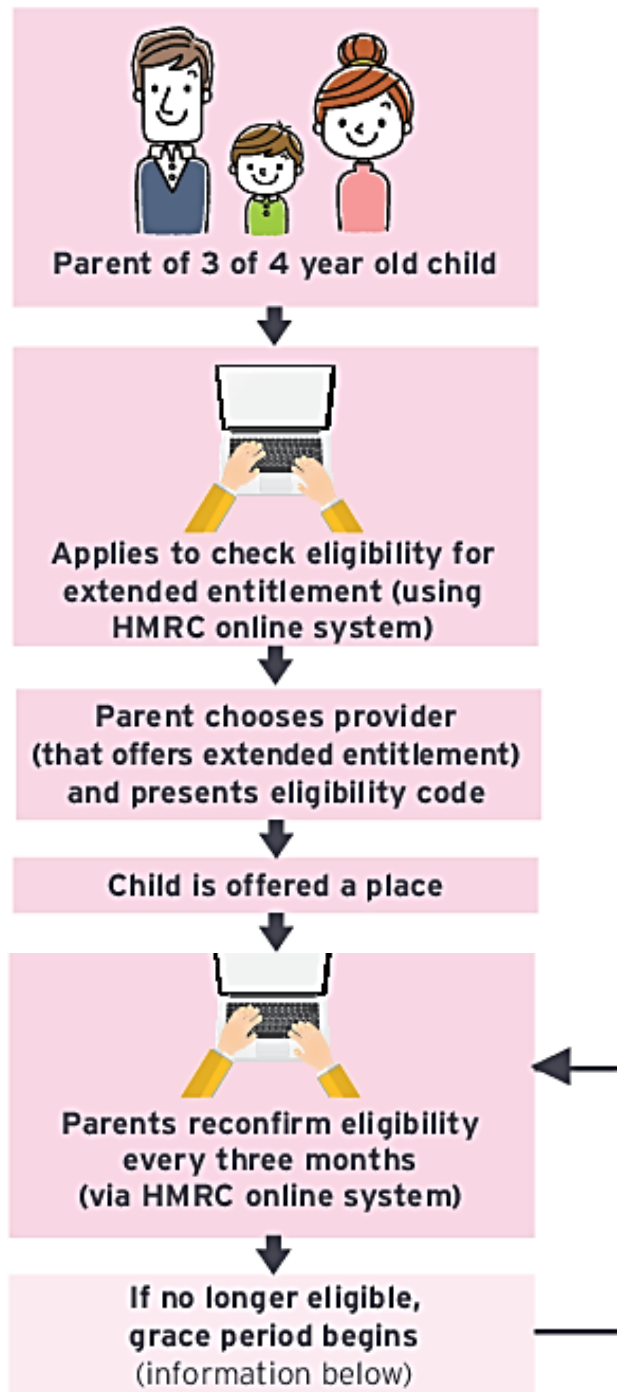


Parent journey flowchart



Date Parent receives ineligible decision on reconfirmation:	Grace Period End date:
1 Jan – 10 Feb	31 March
11 Feb – 31 March	31 August
1 April – 26 May	31 August
27 May – 31 August	31 December
1 September – 21 October	31 December
22 October – 31 December	31 March

After the grace period, if you still do not meet the eligibility criteria, your child will no longer be able to access the extended entitlement, **but will still be able to receive the universal 15 hours a week** of free childcare for all 3 and 4 year olds.