

Enhanced APDR & Strategy for Special Provision

Parent & Carer Consultation Event

Accountable Lead: Dr Halit Hulusi, Head of SEND

**Project Lead: Karan Withington & Matt Lewis,
Change Managers**

Date: 28 June 2023



Plan for the session

- Set out the context for the current consultation
- Share the proposed model for
 - Enhanced Assess-Plan-Do-Review (EAPDR)
 - Staffordshire Enhanced District Inclusion Support (SEDIS Model)
- Provide you with a space to comment and ask questions related to the current consultation

What are your
best hopes for
this session?

Capture your thoughts
and questions during
the session

Karan, Matt and I will
monitor these and try
to address them

The Staffordshire Context

Challenge

- **National context of**
 - Increasing SEND needs
 - Impact of COVID on children, families and services
 - Significant economic challenges
- **Regional context of**
 - One of the lowest rates of children with EHCPs in mainstream (30% v 40%)
 - High proportion of children in Independent Special Provision
 - A geographically large and diverse county
 - Inconsistent support for settings to meet increasing complexity of SEND needs

What you've told us and what we know...

- Variable quality and capacity of SEND support across the county and across schools
- Support isn't quick enough to resolve challenges
- Poor quality Educational Health and Care Plans (EHCPs)
- Most children and families want to remain in their local mainstream school
- Where families want special school places, there aren't enough and they have to travel long distances

Accelerated Progress Plan

- Staffordshire is subject to an Accelerated Progress Plan (April 2022)
- Department for Education and NHS England are monitoring and reviewing our work to improve SEND services
- We have just had our 12 month review (April 2023)

How are we Review of the APP

Successful 6 month, 9month, 12month review with Department for Education
(On target with lots more to do!)

Review 9months

“It was clear that the local area is beginning to make sustainable improvements to SEND services and to the lives of children and young people.” (DfE, 10th October 2022)

Review 12months

“The local area’s collective determination to making sustainable improvements to SEND services and to the lives of children and young people continues to be clear. Evidence was also available to demonstrate that progress is being made to improve coproduction, the Education Health and Care (EHC) needs assessment pathway and special provision.” (DfE, 9 May 2023)



SEND Vision

“All children and young people with SEND are given the opportunity to achieve everything that they can. They engage with the right support at the right time from their parents/carers, the community and the professionals that work with them to make this happen.”

Staffordshire Special Educational Needs and Disabilities (SEND) Strategy 2021-2026

Our Proposal

- Quicker and better identification of need
- Quicker and better quality support **without needing a diagnosis or label**
- Consistency of provision across the county
- Real support for schools to make support children
- A Team Around your Child in their school
- A higher quality assessment **if** an Educational Health Care Plan Assessment is needed

Our Proposal

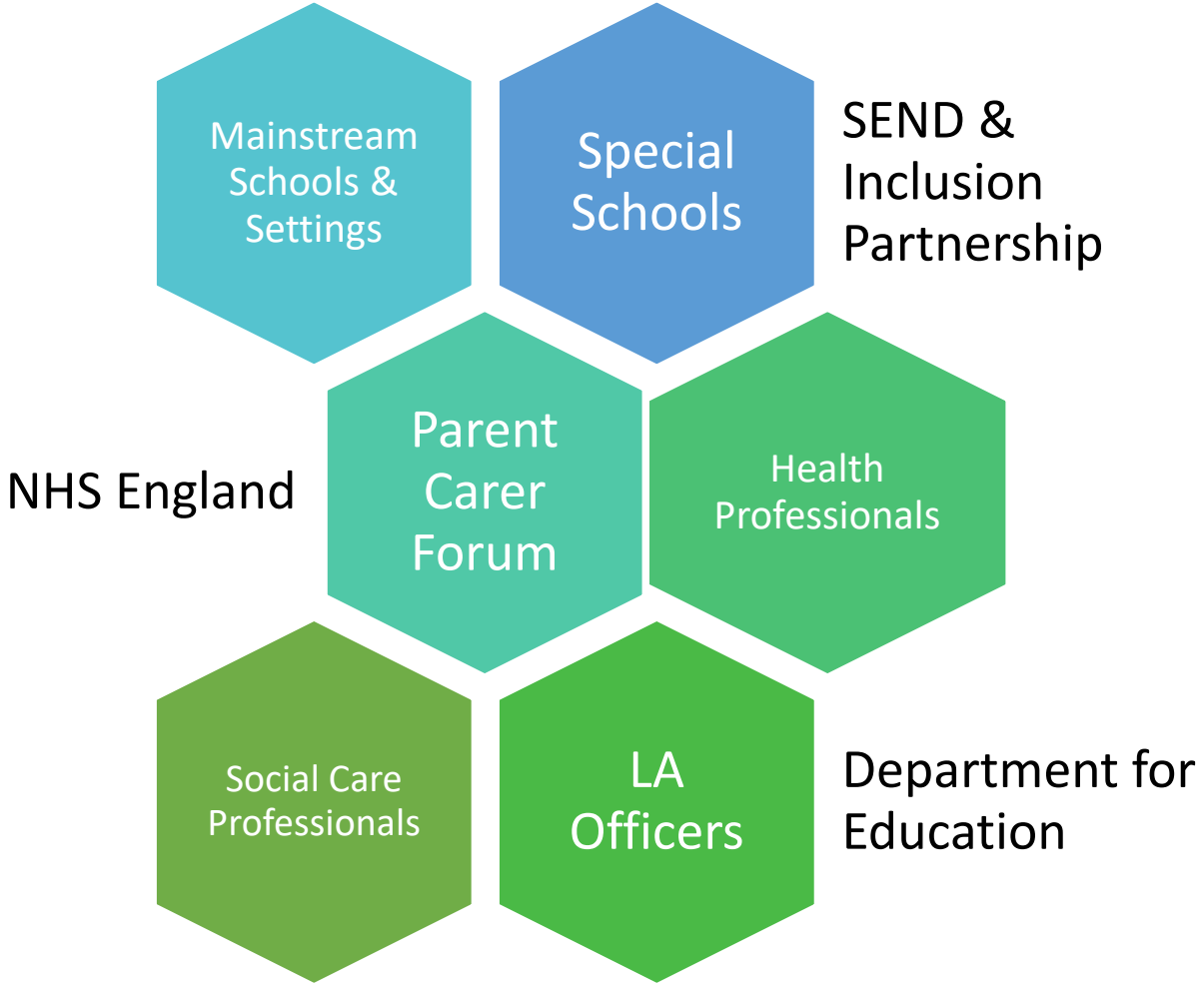
EAPDR

Enhanced
Assess, Plan,
Do, Review

SEDIS

Staffordshire
Enhanced
District
Inclusion
Support

True Partnership Working



Our Proposal

EAPDR

Intervening and building a picture of need and provision

Assess → Plan → Do → Review

SEDIS Support

Child is supported in their school

Swift and high quality provision

Open to all on EAPDR

Provision offsite at SEDIS base if required

Funded by Schools and Staffordshire County Council



EAPDR

Enhanced Assess, Plan Do Review Pathway

LA & Settings to enhance the final cycle(s) of APDR

- ✓ Additional rigour and evaluation through robust APDR
- ✓ True **Team Around the Child** methodology
- ✓ Additional resource and funding during this cycle of APDR (proposed up to £3k per cycle of APDR subject to costed provision map)
- ✓ LA and Setting to share the cost 50/50
- ✓ Driven by district model, schools and LA in partnership

The **EAPDR process will**

- ✓ Focus on holistic outcomes at the start of APDR Cycle
- ✓ Identify and capture / Needs / Provision / Voice that may form the basis of an EHCNA if that is required
- ✓ **Move the decision to request EHCNA to the Review conversation of the EAPDR**
- ✓ Pilot September 2023 and 'Go Live' January 2024

SEDIS

Staffordshire
Enhanced
District Inclusion
Support

Element 1 of the Strategy for Special Provision

- Element 2 Special School Development (16 projects)
- Enhance locality pre statutory provision
- Drive inclusion by supporting inclusion
- Provision accessed by need not label – no diagnosis required
- Provision that is eco-systemic (child, school, family, community)
- SEDIS teams comprise of settings, LA services and other providers
- Primarily outreach - in reach if required
- In-reach child remains on role of home school
- Child must be on EAPDR for school to access SEDIS support
- EAPDR funding used to 'purchase' SEDIS support

Next Steps

- **Consideration by Cabinet September 2023**
- **Out for expressions of interest to settings to develop SEDIS provision**

EAPDR & SEDIS

Your Reflections & Questions

- What I liked...
- What I'd want to be different...
- What I want to know more about...



Next Steps

- Consultation Ends 5 July 2023
- Reflections on the consultation
- Political cabinet approval sought September 2023

EAPDR

- Pre-pilot July 2023
- Pilot September 2023- December 2023
- Launch January 2024

SEDIS

- Expressions of Interest from providers
26 September 2023

We welcome
your
feedback...

Consultation
Ends 5 July
2023

<https://letstalk.staffordshire.gov.uk/eapdr-sedis>