

Factsheet and activities for children

Flood & Severn Valley

What is flooding?

Flooding happens when too much water goes into places where it shouldn't go - like roads, houses, or parks.

When it rains a lot, it can be too much for the ground to soak up, or for rivers or ponds to hold, and it spills out, causing a flood.

Why is flooding a problem?

Floods can cause water to enter people's homes and cause damage. They can also block roads and paths, stopping people from getting to where they need to go. It can take a long time to clean up after a flood, and it can cost people a lot of money to fix things, too. Flooding is a big problem when it happens, and for some people, that can be quite often.

Why is dry weather a problem?

Dry weather means no rain for a long time. That might sound nice at first, but it can cause trouble.

Plants get thirsty



Without rain, flowers, trees, and crops don't get the water they need to grow.

Animals get thirsty too



Rivers and ponds can dry up, so animals have less water to drink.

Fires can start more easily



When everything is dry, even a tiny spark can start a big fire.

Hard ground can cause floods later



If it suddenly rains after a long dry time, the ground might be too hard to soak up the water—so it runs off and causes flooding.

What is the Severn Valley Water management Scheme?

We are a team of people that are looking at what we can do along the River Severn to help the water flow better and make flooding and dry weather less of a problem.

We want to know what you think so that we can find the best way to look after the water in the river Severn.

Did you know...



The river Severn is the longest river in the UK

The 'Severn Bore' creates waves on the river that people travel miles to see. People even surf on the Severn Bore

The start of a river is called the source

Animals like otters, water voles, rabbits and mink live along the River Severn

Rivers have been around for millions of years

The end of a river is called a mouth



Cynllun Rheoli Dŵr

Dyffryn Hafren Severn Valley

Water Management Scheme

Draw

Can you draw a flood in the box below?

Word search

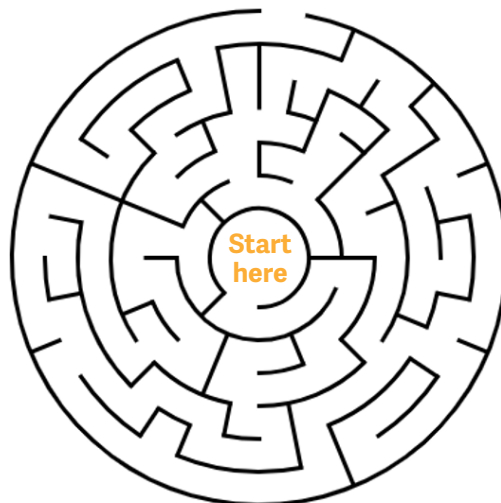
Can you find the hidden words?

SEVERN
RIVER
RAIN
ROCKS
OTTER
RABBIT
HILLS
WATER
TREES

T	E	R	I	V	E	R	M	O	L
L	R	O	C	K	S	A	T	R	S
I	R	E	B	T	Y	I	I	U	E
D	Y	H	E	C	C	N	B	D	V
R	V	B	X	S	Z	F	B	Z	E
T	E	G	S	J	P	I	A	O	R
A	N	W	A	T	E	R	R	T	N
W	A	L	O	P	Z	A	N	T	R
L	O	A	I	L	X	S	B	E	F
K	U	S	H	I	L	L	S	R	V

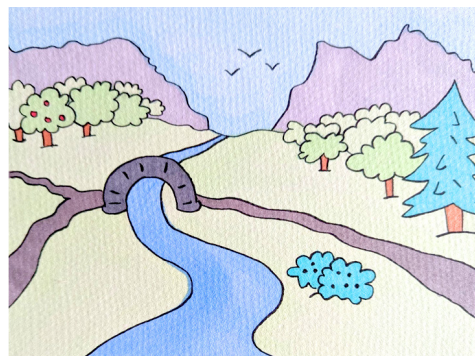
Maze

Can you find your way out of the maze?



Spot the difference

Can you find the 5 differences in the pictures?



Artwork by Laurie Trenfield – www.laurietrenfield.com