



**Training Opportunities for anyone working with or supporting children, young people or their families in Shropshire local authority area.**

**PLEASE NOTE:** Shropshire state funded schools and Early Years providers are charged at Group 1 rates for any sessions which are not prefunded. Independent schools will be charged at the Group 2 rate.

### **Domestic Abuse Training**



*"Domestic Abuse always seems to happen behind closed doors and there is a societal view that it is not our issue to deal with. I am here to help people understand that this is not the case and we need to take action to prevent people dying. People have died in Shropshire and the learning from these case reviews has helped shape this training."*  
Harriet McInnes, Domestic Abuse Training Lead for Shropshire Council

These three, half-day, face to face modules can be attended individually.

#### **Coercive Control and Trauma Informed Practice**

Increase your understanding around what coercive control is, the tactics that may be used by an abuser and how to adopt a trauma informed approach.

[Click here for further information including dates and costs and how to book](#)

#### **Domestic Abuse – empower and protect: building confidence in domestic abuse support**

Increase your confidence in assessing and understanding the risk to victims of domestic abuse who you are working with and in helping to get the correct support in place.

[Click here for further information including dates, costs and how to book](#)

## Domestic Abuse – the impact on children and young people

Increase your knowledge around the impact of domestic abuse on children and young people living within the household and outline support available for families.

[Click here for further information including dates, costs and how to book](#)

## Introduction to Early Help and Thresholds in Shropshire

Working together, at the earliest opportunity, to enable and empower  
Shropshire's families and young people to achieve their best lives.

[shropshire.gov.uk/early-help](http://shropshire.gov.uk/early-help)



This **prefunded**, 2-hour training will give an overview of the Early Help system in the Shropshire local authority area.

Attendees will gain understanding of:

- The Early Help system in Shropshire.
- The roles of different services and professionals within the system.
- Where to find information on Early Help services and referral pathways.
- Where to find information around Thresholds for different levels of need.

[Click here for further information, training dates and booking information.](#)

## Exploitation Pathway in Shropshire

A half-day training module to empower practitioners to make 'every contact count'.

When it comes to exploitation, it is too often that opportunities are missed. If the child is choosing to speak to you, they must trust you with their information.

Young people will be the first to say that they do not like having a change of worker or being referred, so knowing what you can do if you are presented with disclosures is vital.

[Click here for further information, including dates, costs and how to book](#)

## LEGO® Think Bricks



Based on LEGO® Education Build to Express, 'Think Bricks' is a brilliant toolkit of Lego specially selected LEGO elements providing ready - made metaphors. It is LEGO serious play!

In this hands-on inspirational workshop, delegates will experience a solution focused, refreshing and fun innovation that will enable them to learn the basis of processes needed to facilitate LEGO sessions and will experience on an adult level the power of this approach, leaving the session inspired to use as an intervention to support young people with SEMH.

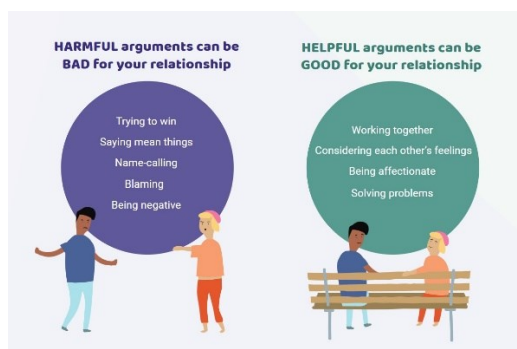
[Click here for further information, including dates, costs and how to book](#)

## Mental Health First Aid Awareness (Youth)

Our course is an introductory four-hour session to raise awareness of young people's mental health. Delivered by an Approved MHFA England instructor from Joint Training.

[Click here for further information, costs, training dates and how to book](#)

## Parental Conflict Training



These 5 **prefunded** training modules will help anyone working with families in Shropshire reduce the impact of parental conflict on children and family wellbeing.

Modules need to be completed in order; each module is a maximum of 2 hours duration. You do not have to attend all 5 modules.

Click on the links below for further information, including dates and how to book.

[Module 1 - Introduction to reducing parental conflict](#)

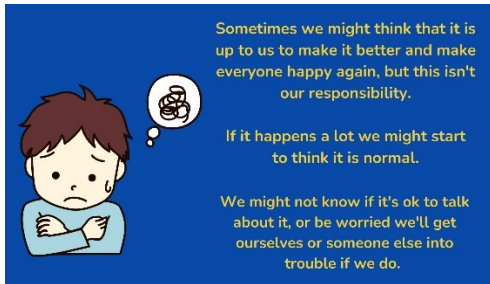
[Module 2 - using tools to support healthy parental relationships](#)

[Module 3 - building confidence in delivering an intervention](#)

[Module 4 - Complex Co-parenting part A](#)

[Module 5 - Complex Co-parenting part B](#)

## Reducing Parental Conflict – helping children to understand parental conflict



This 2-hour **prefunded** workshop introduces a number of activities and tools that can be used to help young people make sense of the complex adult relationships around them. The aim is to help children talk more openly, manage their feelings, and realise they're not alone. A skills-based approach using easy to access games and resources for primary and secondary aged children.

[Click here for further information, training dates and booking information](#)

## Professional Curiosity: putting into practice

This 3-hour session will increase your understanding of professional curiosity.

[Click here for further information, costs, training dates and booking information](#)

## Self Harm Awareness

Gain awareness of the current prevalence of self harm, the contributing factors and how we may work towards supporting someone who self harms. Delivered by Satveer Pedraza- Nijjar – Attention Seekers?

[Click here for further information, costs, training dates and booking information](#)

## Substance Misuse and Young People



A half-day training module to provide an understanding of young people using substances; exploring addiction, exploitation, and how artificial intelligence (AI) may influence future exploitation.

Consider tools, trends, theories and ways of working with young people in Shropshire.

Know what services and resources are available and where to signpost.

[Click here for further information including dates, costs and how to book](#)

Any questions regarding any of the courses above please email [joint.training@shropshire.gov.uk](mailto:joint.training@shropshire.gov.uk)

## Join the Joint Training mailing list

Sign up to the Joint Training mailing list to receive our regular newsletter, updates on upcoming courses and other important information. To do this, simply click on this link:- [SIGN UP to Joint Training updates](#)

