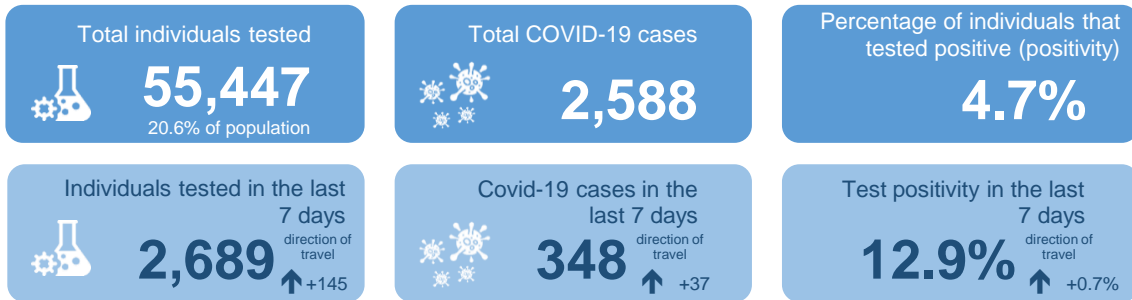


COVID-19 Snapshot

As of 11th November 2020 (data reported up to 8th November 2020)

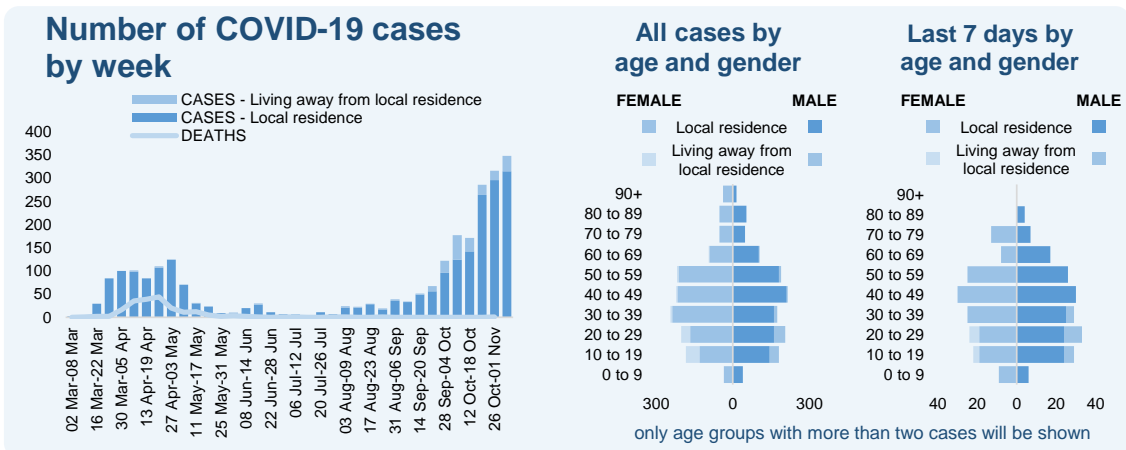


Population 269,457



Direction of travel compares current snapshot against previous snapshot

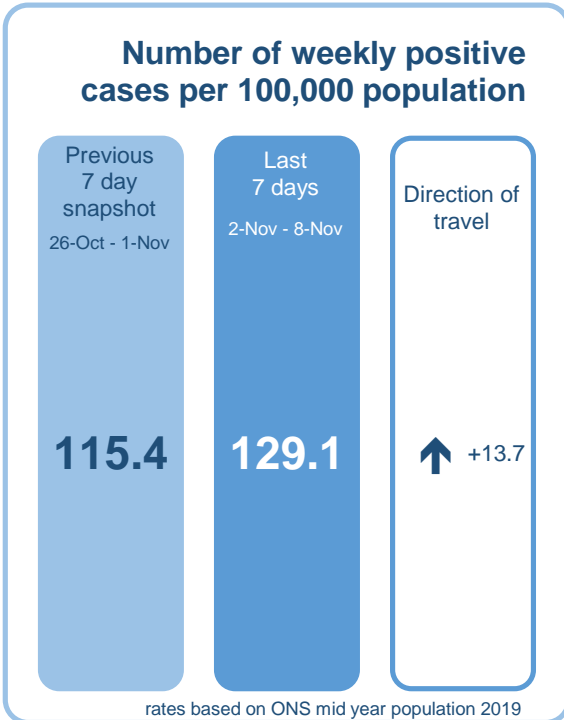
key: ↑ Increasing ● no change ↓ decreasing



Most affected wards in the last 7 days

Ward	Number of cases
Olney	40
Woughton & Fishermead	38
Newport Pagnell South	27
Bletchley Park	22
Bradwell	20
Loughton & Shenley	20
Newport Pagnell North & Hanslope	20
Bletchley East	19
Campbell Park & Old Woughton	16
Stantonbury	16
Wolverton	15
Danesborough & Walton	14
Bletchley West	13
Monkston	13
Tattenhoe	13
Broughton	12
Shenley Brook End	12
Central Milton Keynes	11
Stony Stratford	7

only wards with more than two cases will be shown



(current snapshot against previous snapshot)

Please note: numbers in recent days may rise, reflecting diagnostic and reporting turnaround time. All detail within this report is the latest data available prior to publishing (11/11/2020).

Week-to-week comparisons are based on the data available at the time each snapshot was published.

Produced by: Bedford Borough Council, Central Bedfordshire Council and Milton Keynes Council Public Health Evidence and Intel ligence Team - J Phillips.

Source: Public Health England (PHE), Office for National Statistics (ONS).