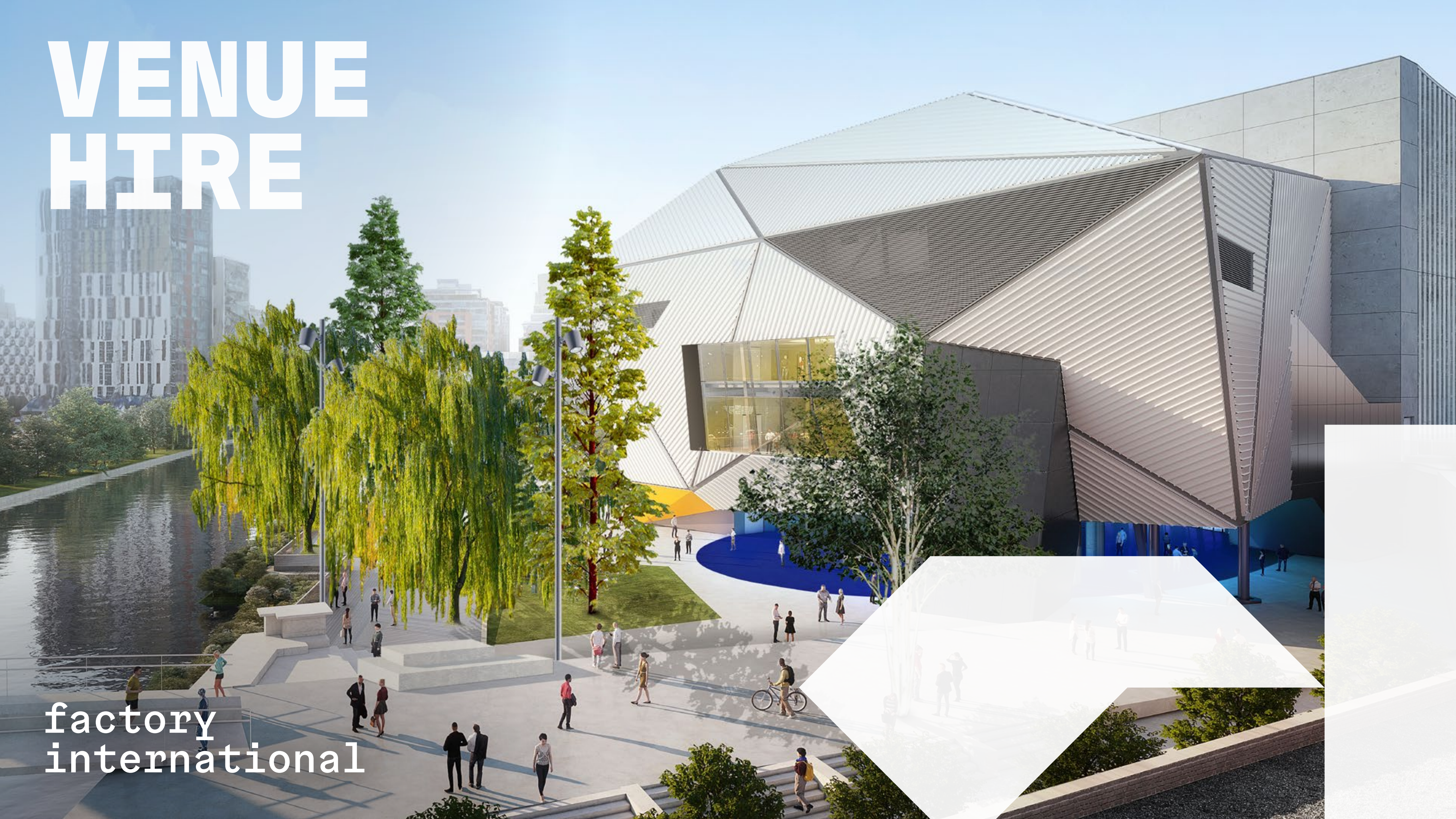


VENUE HIRE



factory
international



THE VENUE



Offering up to 13,200m² of flexible indoor and outdoor space and accommodating up to 5,000 people, Factory International is your blank canvas to create unforgettable moments – with the wraparound expertise of our event, production and technical teams.

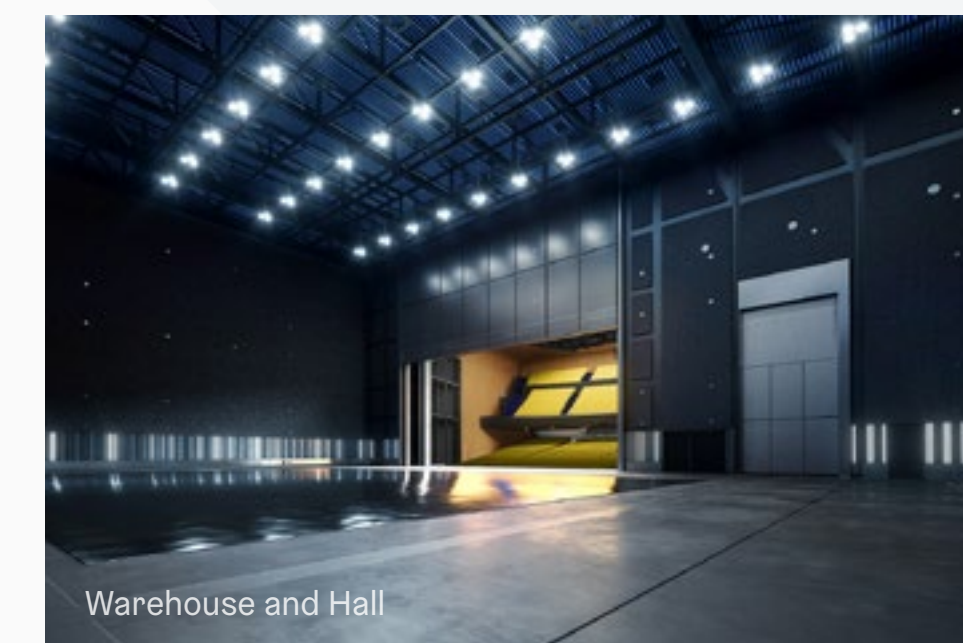
We're able to put on events of any size, or type – whether it's a food festival, a wedding, a brand shoot or something entirely unique. The creativity and innovation possible under our roof isn't reserved for our cultural programme, though. Throughout the year Factory International's incredible spaces will be available for event hire; from major exhibitions and gala dinners, to stand-out brand launches and fashion events.

**Planning your next event?
Now's the time to get in touch.**

[HEAR MORE ABOUT OUR VENUE ↗](#)



Warehouse

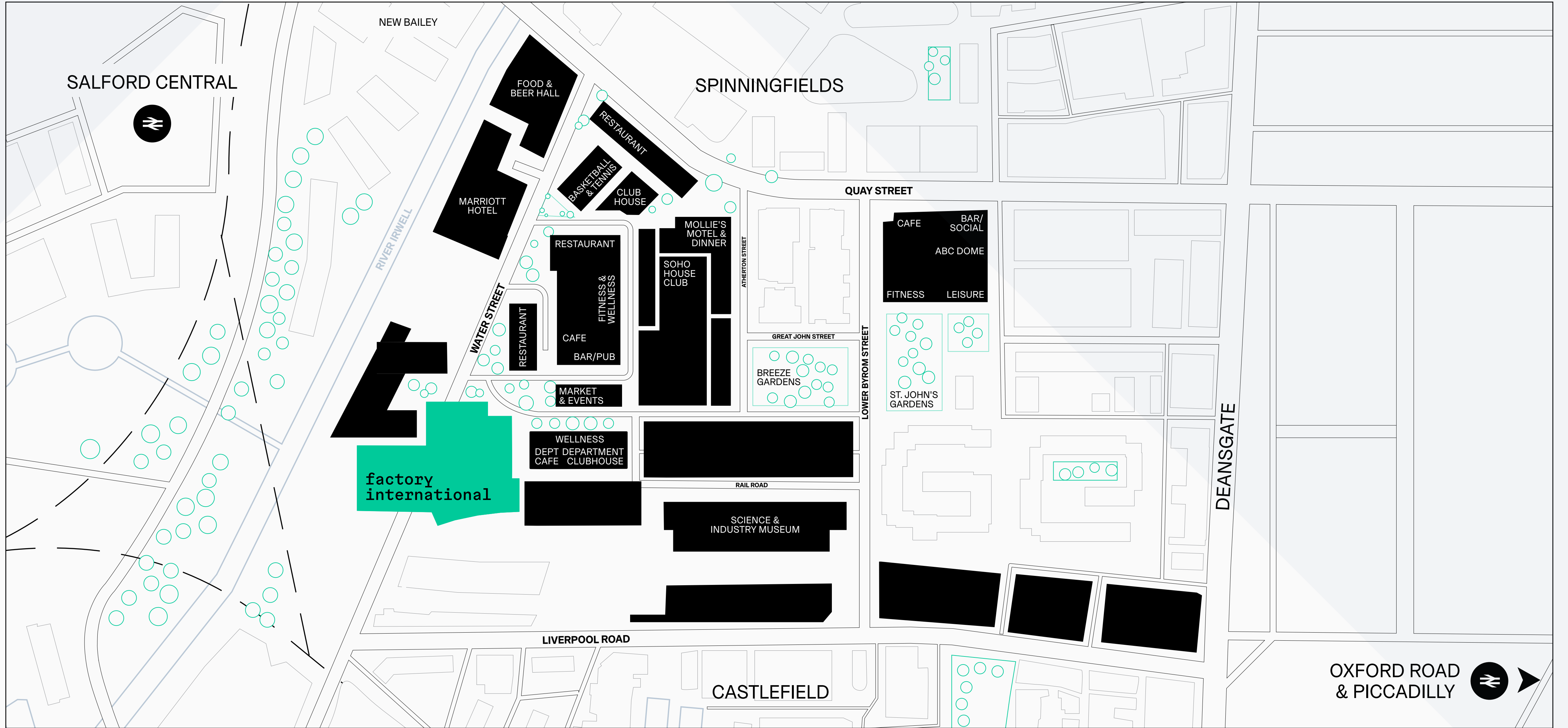


Warehouse and Hall

OUR LOCATION

A nighttime photograph of a modern urban development. In the foreground, a canal reflects the city lights. To the left, a tall, dark building with a grid-like facade is illuminated. In the center, a large, white, angular structure is lit up. To the right, a multi-story residential building with balconies is visible. Several construction cranes with red lights are scattered throughout the scene, indicating ongoing development. The sky is dark, and the overall atmosphere is one of a vibrant, emerging city.

Situated in Allied London's new St. John's neighbourhood, formerly home to Granada TV and next to the Science and Industry Museum, which will be an important collaborator for Factory International. St. John's is being designed with a focus on cultural enterprise, creation and production, and Factory International will be at its heart.



IMPACT BEYOND THE STAGE

Factory International's so much more than a venue. It's a place where content and programmes on and off the stage will make a lasting difference – to people, communities and in terms of sustainability.

This includes giving back to the region we call home, with profits from events returned to the arts and into The Factory Academy, a scheme which develops the next generation of diverse talent in our local communities.



Factory Academy – Broadcast and Film course



Victoria Jane at MIF21. Image © Priti Shikotra



Factory Academy. Image © Chris Payne

BUILDING

- ENTRANCE/EXIT
- PUBLIC REALM
- PHYSICAL LINK TO SIM

BACK OF HOUSE

Backstage supporting spaces for visiting artists, companies and events staff.

A retractable wall allows you to reconfigure the space into the North and South Warehouse, providing acoustic separation and allowing multi-use.

THE WAREHOUSE

A supersized space (33m x 66m), capable of holding audiences up to 5,000 (Standing)

THE HALL

A more conventional theatre space split between a fixed balcony and removable stalls, capable of accommodating between up to 1,500 – 1,800 depending on configuration.

SOCIAL AND HALL FOYERS

A large volume at ground floor level under the Warehouse with additional Foyer spaces at Level 2 and 3, wrapping around The Hall.

PUBLIC REALM

Outdoor and undercover public realm will support the Factory International programme as well as providing visitors with a setting to enjoy the building and surrounding environment, including the River Irwell an almost unique experience in central Manchester.

[DISCOVER OUR VENUE ↗](#)

HALL

An innovative theatre space at the heart of the venue, which has been specifically designed to allow for a more immersive relationship between stage and audience.



Accommodates up to **1,800 people**.



AV, stage and **lighting inclusions** available



Varying stage **depths**.



Flexible stall seating, or can be removed entirely.



Tiered seating.



Wheelchair **access** on all levels.



Foyer bars, with impressive **views across the City**.


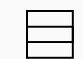


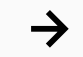


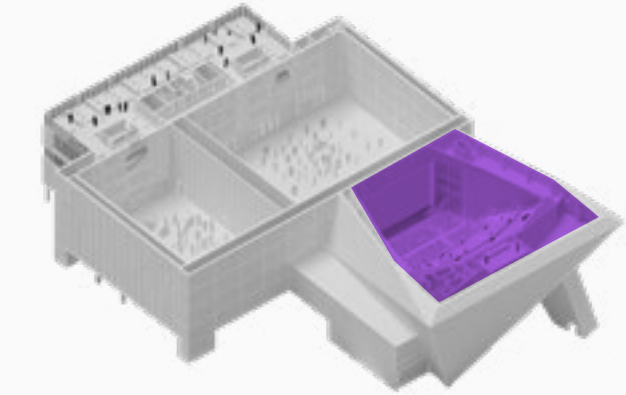
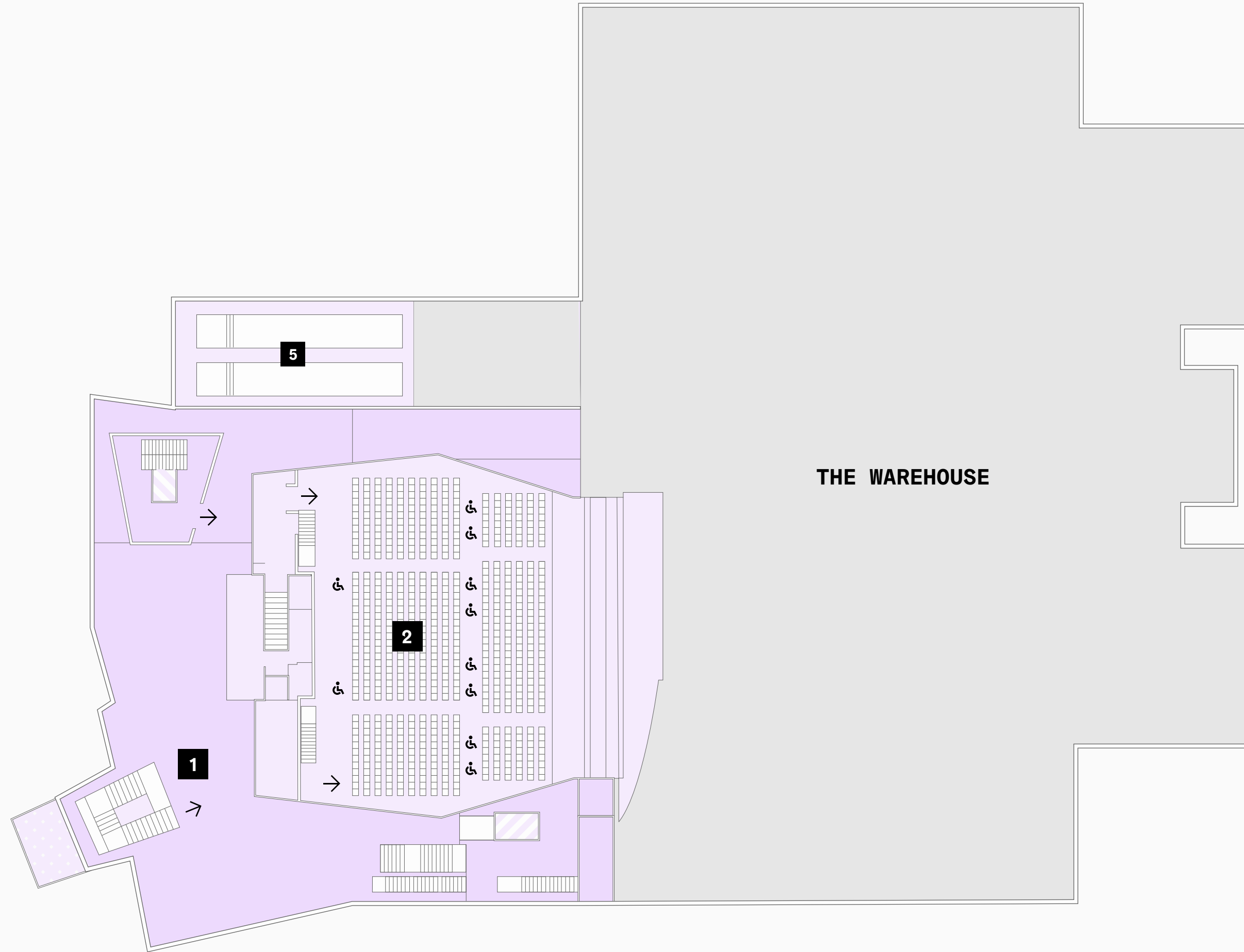
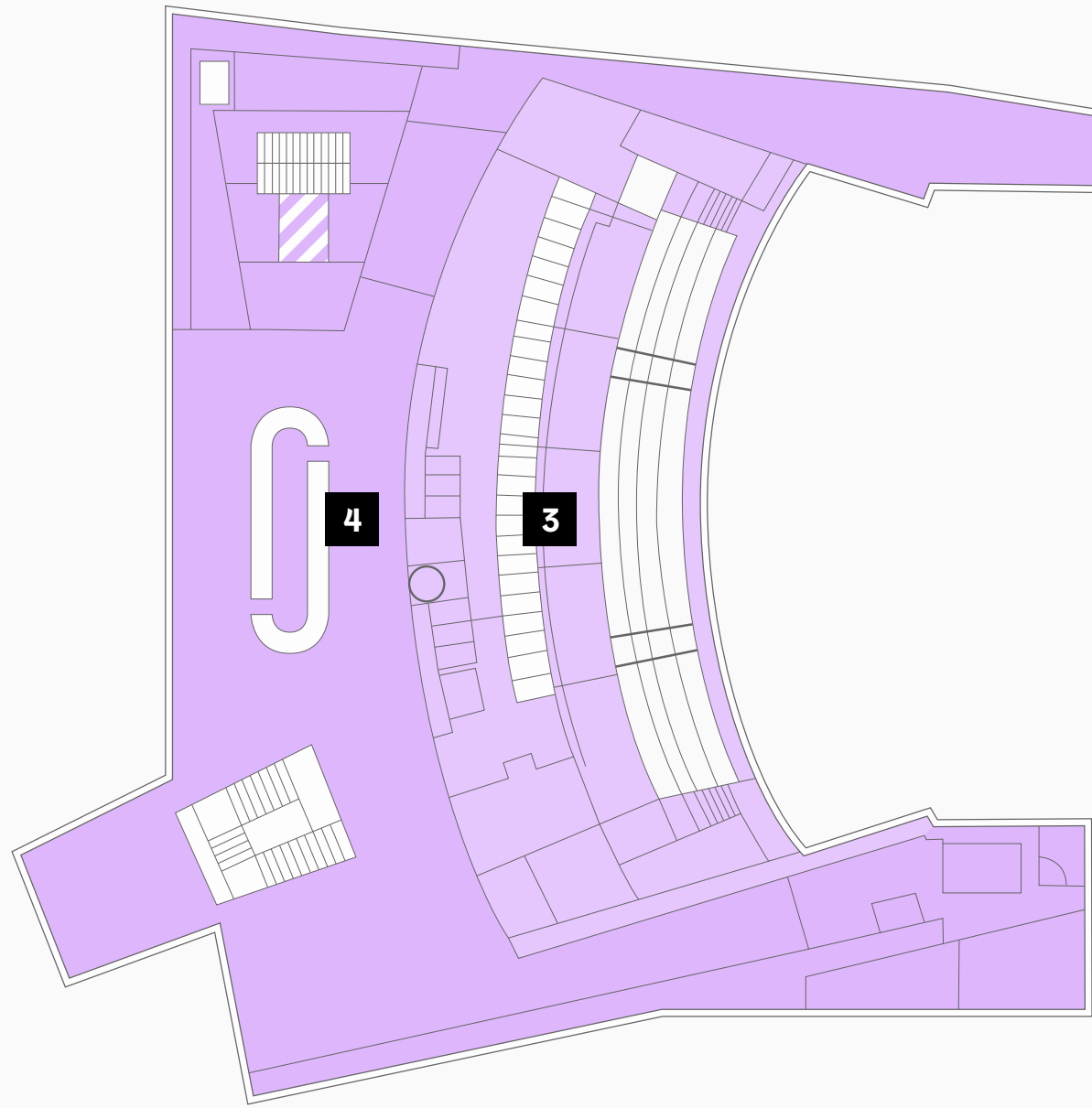
Proscenium wall connecting the Hall to the Warehouse **fully acoustically soundproofed** when closed or can be lifted to allow a full building takeover.

The supersized stage connects the Hall with the Warehouse, meaning you can really think big – from awards ceremonies and conferences to hybrid events

HALL

- 1** 1ST FLOOR FOYER
- 2** LOWER STALLS
- 3** BALCONY SEATING
- 4** 2ND FLOOR FOYER
- 5** TRUCK LIFT

-  Lifts
-  Stairs
-  Accessible
-  Toilets
-  Entrance



HALL

Standing Reception	Up to 1800
Theatre	Up to 1500
Banquet	270
Area (m2)	580

THE WAREHOUSE

Connected to the Hall by the stage, the Warehouse is a flexible space — think epic concerts, large conferences and gala dinners. A true blank canvas, designed to accommodate a myriad of different events.



Accommodates up to **5,000 people**.



A **retractable wall** allows you to reconfigure the space into the North and South Warehouse



Acoustic separation and allowing multi-use across the venue at any one time.



Direct articulated **truck access**.








Anchor points in the wall to **support any kind of mount or rigging**.

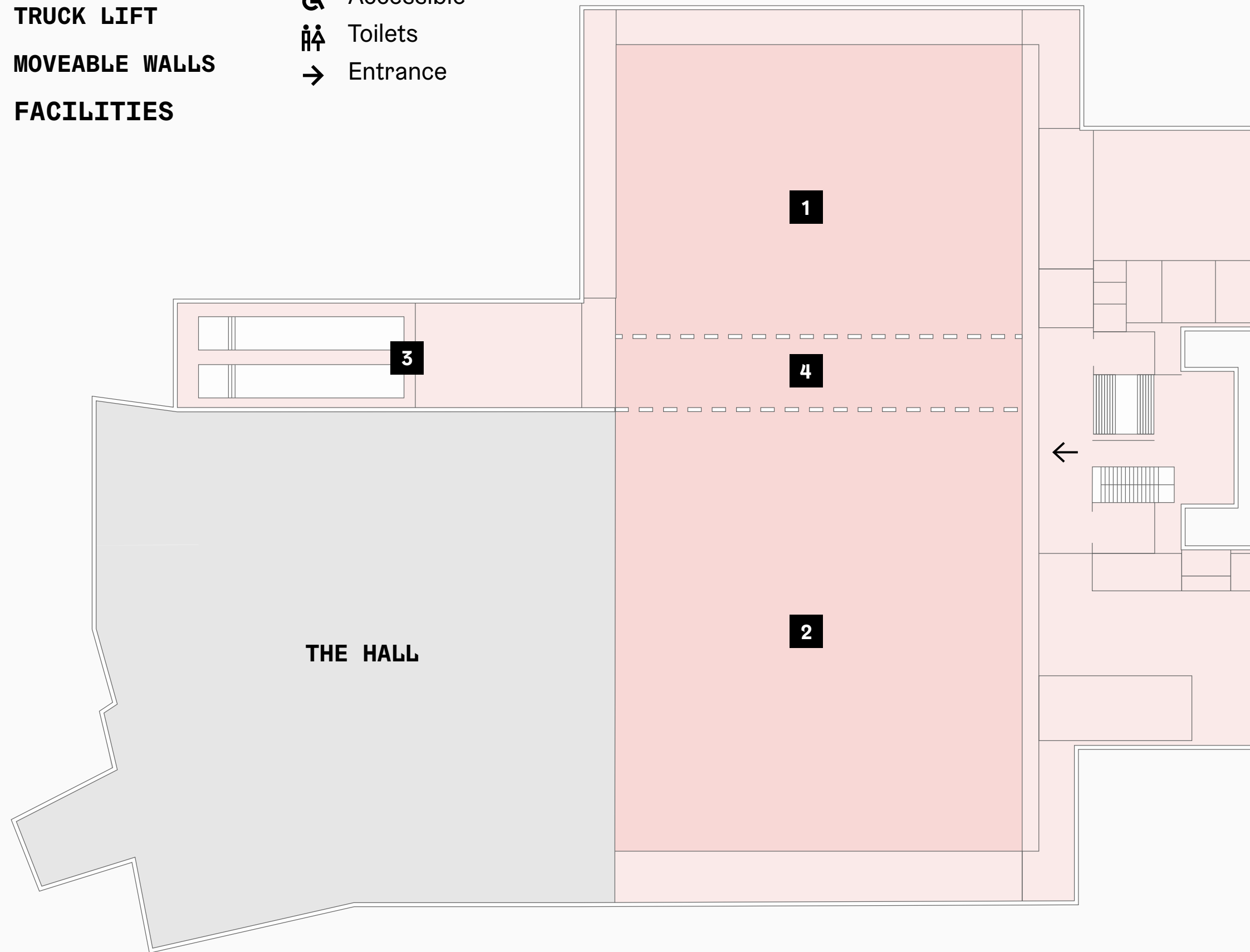


Universal technical grid across the ceiling.

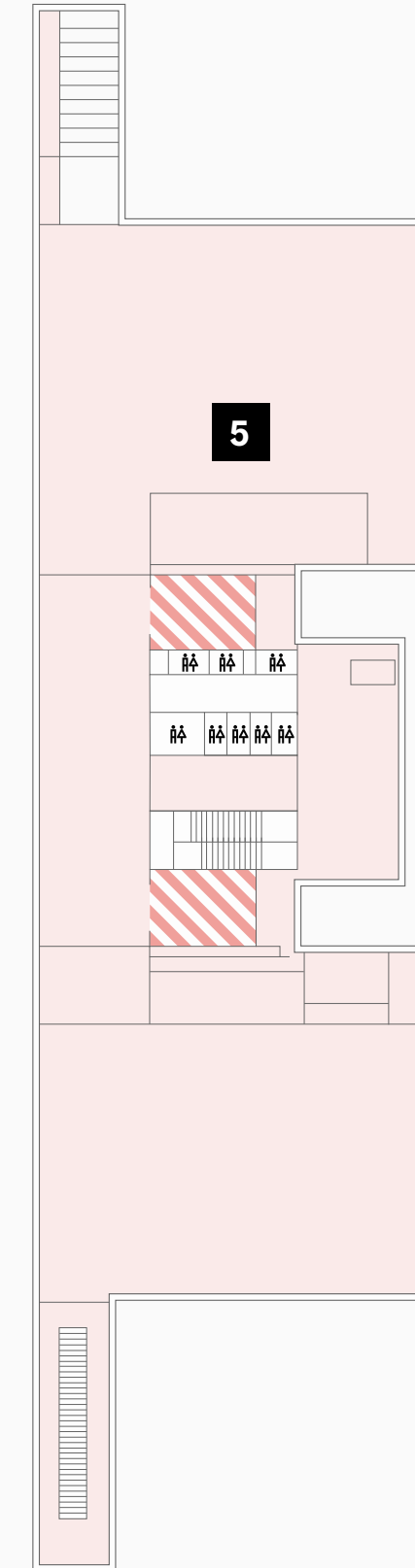
THE WAREHOUSE

- 1 WAREHOUSE NORTH**
- 2 WAREHOUSE SOUTH**
- 3 TRUCK LIFT**
- 4 MOVEABLE WALLS**
- 5 FACILITIES**

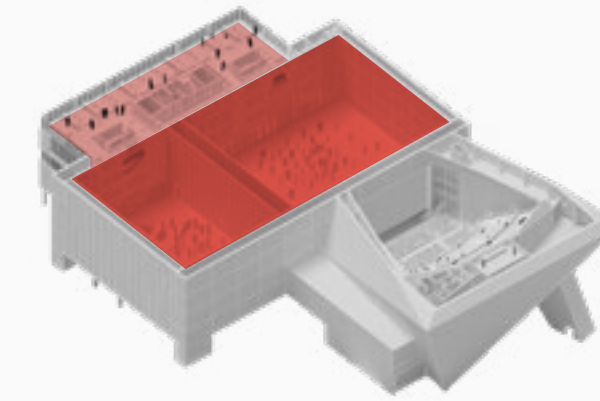
-  Lifts
-  Stairs
-  Accessible
-  Toilets
-  Entrance



FIRST FLOOR

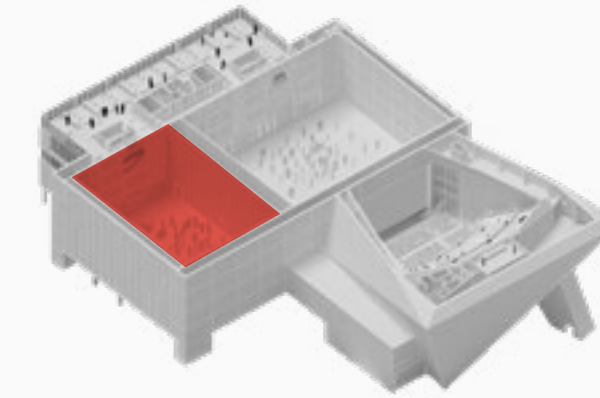


BACK OF HOUSE TOWERS



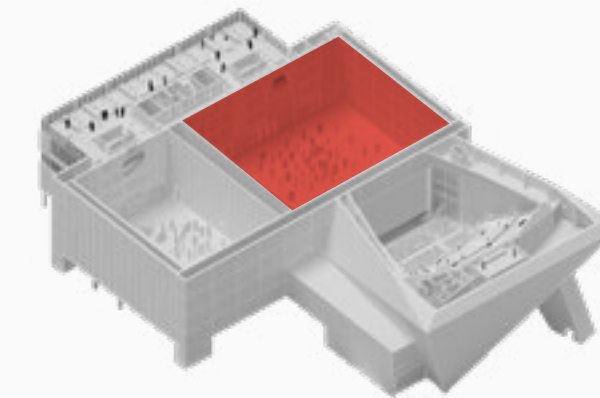
WAREHOUSE

Standing Reception	5000
Theatre	2400
Banquet	1000
Height (max)	20.5m
Height (min)	20.5m
Length	64.1m
Width	32.7m
Area (m ²)	2096.1



NORTH

Standing Reception	2000
Theatre	900
Banquet	330
Height (max)	20.5m
Height (min)	20.5m
Length	32.7m
Width	23.6m
Area (m ²)	771.7



SOUTH

Standing Reception	3000
Theatre	1500
Banquet	510
Height (max)	20.5m
Height (min)	20.5m
Length	35.8m
Width	32.7m
Area (m ²)	1170.7

PUBLIC REALM / THE SOCIAL

With beautiful south-facing views to the River Irwell, River Square is a truly unique outdoor events space ideal for pop-up brand activations, experiential marketing campaigns, live music or markets.



Expected annual footfall of 850,000.



Supplementing River Square, the Undercroft runs below Factory International, creating a covered external space and enabling activities to take place year-round.



External power supply.



WiFi provision within the Undercroft.

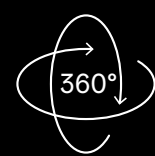


Connected to neighbouring St John's business and leisure district.

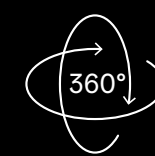


Up to 2,100 m2 of space to be hired across the Public Realm.

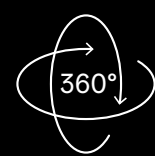
Leading into Factory International, The Social is a ground-floor foyer nestled under the arch of The Hall and The Warehouse. A unique and versatile reception space combines a bright and airy atmosphere with an industrial feel; it also includes a series of listed arches – the only existing feature incorporated into the building.



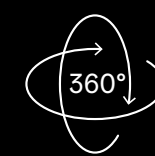
WAREHOUSE – LIVE MUSIC



WAREHOUSE – ART INSTALLATION



PUBLIC REALM



AUDITORIUM

PACKAGES

The uniqueness and flexibility of our spaces means we can curate a package to suit any vision.

- Awards and dinners
- Brand and product launches
- Conferences and exhibitions
- Fashion events
- Filming and broadcast
- Standing receptions
- Brand activations
- Christmas parties
- Weddings and receptions

Looking to 'wow'? Get in touch and discuss a bespoke package for your event at events@factoryinternational.org or for music enquiries at music@factoryinternational.org



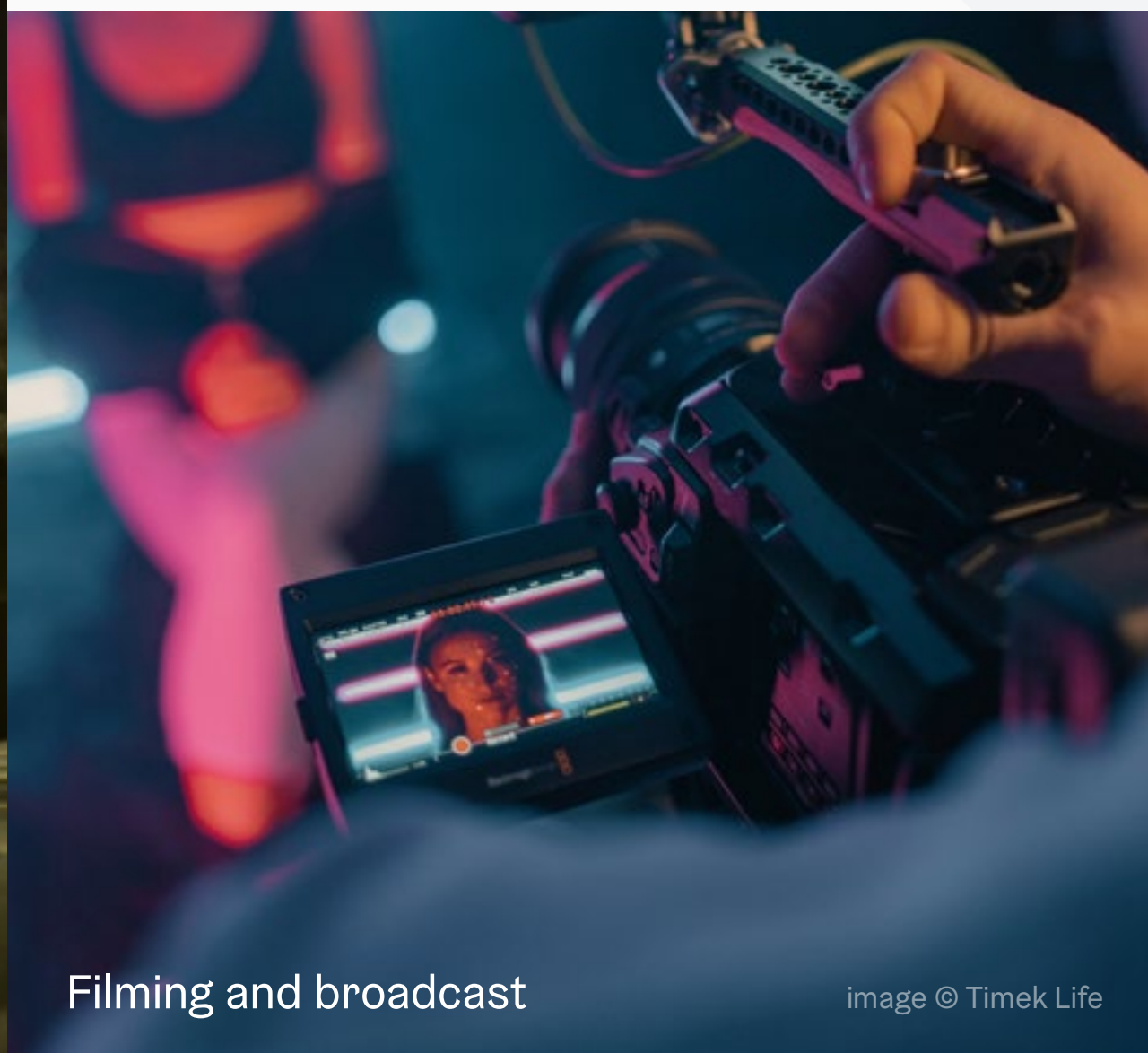
Standing receptions

image © Mariana Yáñez



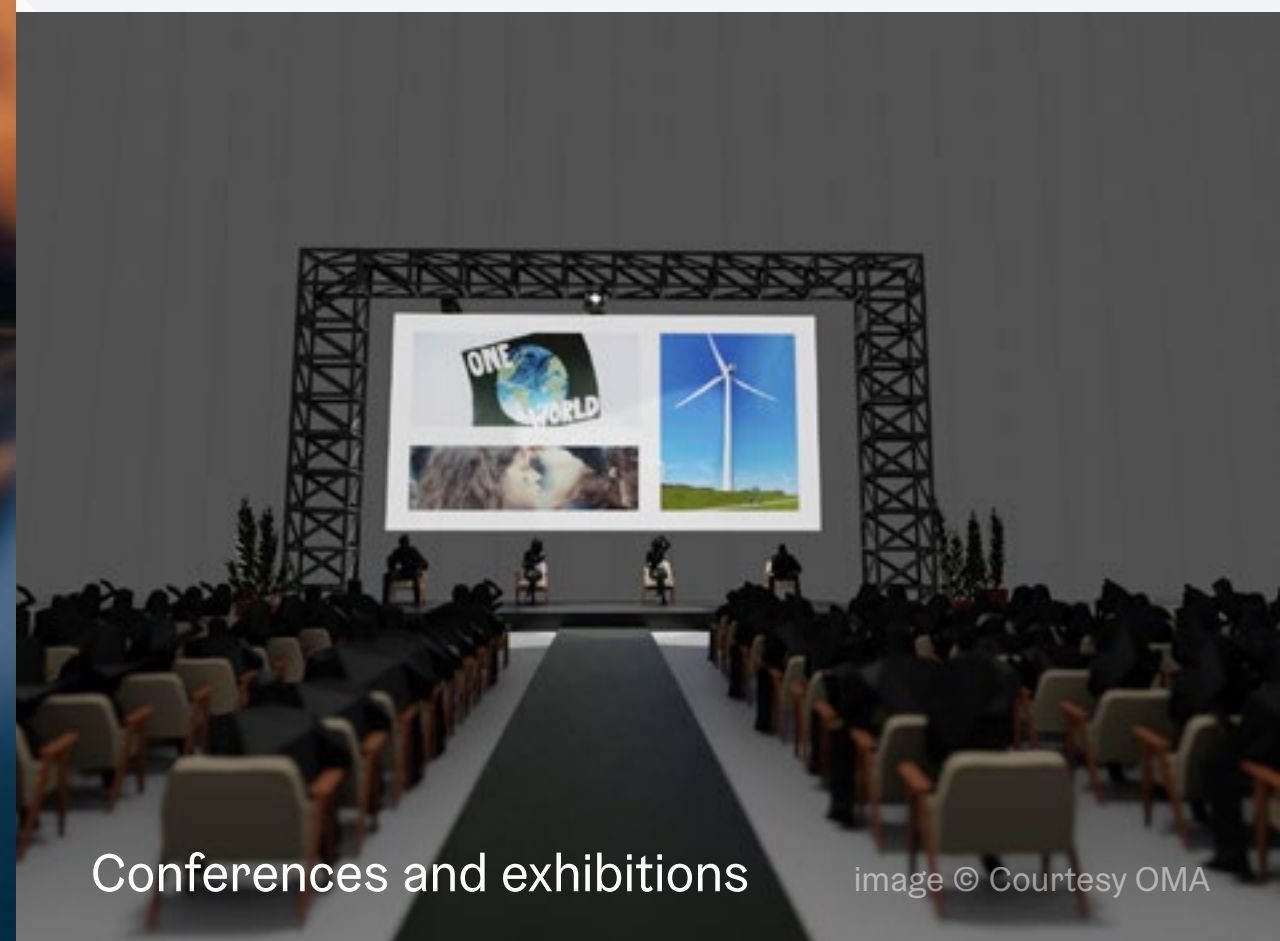
Fashion events

image © Rudy Issa



Filming and broadcast

image © Timek Life



Conferences and exhibitions

image © Courtesy OMA

APPROACH



We know how to put on a show.

With over 15 years' experience producing the globally-renowned Manchester International Festival, our teams know what it takes to create something truly special. When you hire a space at Factory International, our in-house event, catering, technical and production teams will be on hand to help seamlessly bring your vision to life.

Our technical expertise means you can think big; whether it's innovative tech, lighting or sound – or even transmitting your event around the world – we'll help you get creative.

ACCESS



At Factory International, we're driven to make everything we do more inclusive, accessible and diverse.

This includes making sure our venue is comfortable and easy to visit for everyone. We have a dedicated Access Manager who has overall responsibility for ensuring the venue is as accessible as possible, but also ask everyone who works with us to put access at the heart of their events.

To speak to someone directly, you can contact our events team at [**events@factoryinternational.org**](mailto:events@factoryinternational.org)

SUSTAINABILITY

A photograph of a construction site at night. In the foreground, several large, orange, dome-shaped tents are visible. In the middle ground, a large, leafy green tree stands in front of a building under construction. The building is surrounded by scaffolding and has some lights on. The background is dark, suggesting it is nighttime.

Sustainability targets are like business goals at Factory International – integral to our mission and always under review.

Our focus is on in-venue innovations that enhance experience while reducing impact, more sustainable working practices and educating the next generation of talent on how they can make a positive difference to the planet.

We ask all our partners to consider how they can reduce the environmental impact of their events – from encouraging sustainable travel to and from the venue to considering the materials they use. Our experienced events team are always on hand to provide guidance and support in this area.

More information on our sustainability approach or to speak to someone directly, you can contact our events team at events@factoryinternational.org

GET IN TOUCH

Ready to plan your event?

To discuss what's possible at Factory International in more detail, get in touch with our events team at events@factoryinternational.org or for music enquiries at music@factoryinternational.org

factory
international

