

## LOCAL OFFER WEB PAGES

[www.manchester.gov.uk/sendlocaloffer](http://www.manchester.gov.uk/sendlocaloffer)

More than just an online directory, the web pages bring everything together in one place, such as details of services available, who they're for (eligibility criteria) and how to access them. Working with parents and carers, we've improved how the web pages look and made them easier to find what you're looking for.



## EMAIL NEWSLETTER

Over thirty newsletters sent; 3,172 parent-carers, practitioners and voluntary-sector providers are subscribed to receive the updates from the team.



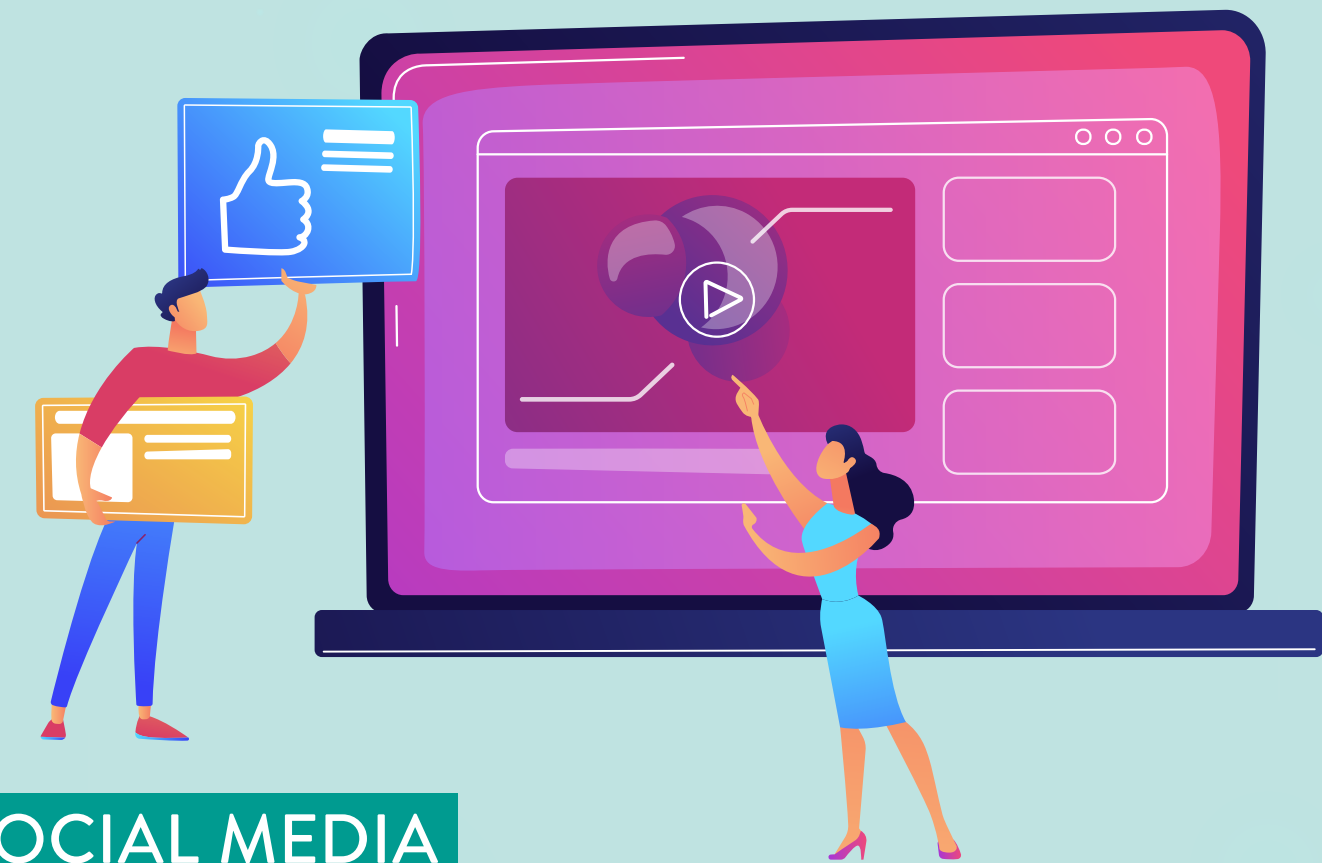
# MANCHESTER'S SPECIAL EDUCATIONAL NEEDS AND DISABILITIES (SEND)

## LOCAL OFFER

The Local Offer is all the activities, services, advice and support offered by numerous organisations across the city, for children and young people (0–25 years) who have special educational needs or disabilities. It includes things to do, places to go, rights, health, money, childcare, education, support groups, Short Breaks and independent living. There are lots of ways to find out about Manchester's Local Offer.

## DROP-IN SESSIONS

No need to book, just pop in to one of the regular sessions to speak to a range of organisations. (Currently delivered virtually.)



## SOCIAL MEDIA

Information is shared on Facebook via the Manchester Parent Champions ([facebook.com/groups/manchesterparentchampions](https://www.facebook.com/groups/manchesterparentchampions)) and Manchester Parent Carer Forum ([www.facebook.com/mpcinfo/](https://www.facebook.com/mpcinfo/)) and on Twitter via the Local Offer Twitter account ([twitter.com/MCRLocalOffer](https://twitter.com/MCRLocalOffer)). The Facebook group also provides peer-to-peer support for parents and carers. Parent Champions are provided with training on the Local Offer and social media.

## CONTACT THE LOCAL OFFER TEAM DIRECTLY

If you prefer to chat, you can call us on **0161 234 1946**. You can also email [localoffer@manchester.gov.uk](mailto:localoffer@manchester.gov.uk)