



Skills Support^G
for Growth

Skills Support for Growth



European Union
European
Social Fund



CONTENTS

What is Skills Support for Growth?	03
What type of support is available?	04
Can the young person gain a qualification?	05
Work experience	06
What about college or getting a job?	06
Learner journey	07
Suppliers	08
Bolton Local Authority	08
Bury Local Authority	09
Manchester Local Authority	10 - 11
Oldham Local Authority	12
Rochdale Local Authority	13
Salford Local Authority	14
Stockport Local Authority	15
Tameside Local Authority	16
Trafford Local Authority	17
Wigan Local Authority	17
Where next	18

WHAT IS SKILLS SUPPORT FOR GROWTH?

Skills Support for Growth (SSG) is personalised support for 15-24 year olds who are not in education, employment or training (NEET). The programme provides young people with vocational skills, confidence and work experience opportunities to help them prepare for the world of work.



WHAT TYPE OF SUPPORT IS AVAILABLE?



We offer impartial 1-1 support from a designated key worker at locations throughout Greater Manchester (remote support is currently available)



We provide specialist support to help overcome any barriers the young person feels they may have and help with confidence, motivation and self esteem



Careers advice and guidance and help to create a CV



Work experience opportunities (optional) to experience life outside the classroom



Certified training in various industries



Help with moving towards their next step, whether it be college, an apprenticeship, traineeship or paid work

CAN THE YOUNG PERSON GAIN A QUALIFICATION?

Yes! We have short courses available if they want to gain a qualification and improve their prospects. These qualifications include Employability, Personal Development, Presentation Skills and Team Building. Qualifications can also be gained in certain industry areas where available.



WORK EXPERIENCE

We can provide work experience in an industry which interests the young person. This will provide them with real life skills and experience which will boost their CV and support them whilst applying for future jobs.

WHAT ABOUT COLLEGE OR GETTING A JOB?

Our friendly team are on-hand to help young people achieve whatever they want to do. Whether they are applying for college or looking for jobs, our team are with them every step of the way. We can even accompany them to events such as open days, interviews and drop-in sessions.



LEARNER JOURNEY



Non-regulated activity includes a variety of interventions such as; careers advice, diagnostic assessments, confidence building, CV writing and interview skills.

Progression activities include; completing college applications, visiting alternative provisions and referring to our apprenticeship team.

SUPPLIERS

BOLTON LOCAL AUTHORITY

BOLTON CONNEXIONS CAREERS SERVICE (15-18)

Foundations for Learning and Life Preparation for Work

Various Sector Based Pathways

CONTACT DETAILS

E. Katrina.Berwick@bolton.gov.uk

T. 01204 334450/ 07766298066

THE WORKSHOP BOLTON COUNCIL (19-24)

Foundations for Learning and Life Preparation for Work

Various Sector Based Pathways

Work Experience

CONTACT DETAILS

E. joanne.cooper@bolton.gov.uk

T. 01204 332955

BURY LOCAL AUTHORITY

BURY COLLEGE

Pre-apprenticeship programme

Preparation for Working Life

Developing Employability Skills

Various Sector based pathways

CONTACT DETAILS

E. gary.spann@burycollege.ac.uk

T. 07715 848 896

SSG BURY

Introduction to Construction

Retail

Employability Skills

Enrichment Activities

Work Experience

Careers Advice and Guidance

CONTACT DETAILS

E. lyndsey.boardman@gceducationandskills.ac.uk

T. 01706 717 860

GROWTH COMPANY EMPLOYMENT

Care

Covid Awareness

Facilities

Hospitality

Retail

Warehouse

Wellbeing

CONTACT DETAILS

E. Jayne.Livingstone@gcemployment.uk

T. 07595 465 315



GLOBAL MAKE-UP AND HAIR

Preparation for Work
Employability and Foundations for Learning and Life
Introduction to Hair and Make-up
Cosmetic Make-up and Hair
Taster Sessions

CONTACT DETAILS

E. victoriaf@globalmakeupacademy.co.uk
T. 07888 875 558

HARPURHEY TRAINING CENTRE

Retail
Employability Skills
Enrichment Activities
Work Experience
Careers Advice and Guidance

CONTACT DETAILS

E. caroline.simpson@gceducationandskills.ac.uk
T. 0161 205 6790

LONGSIGHT TRAINING CENTRE

Introduction to Hairdressing
Retail
Employability Skills
Enrichment Activities
Work Experience
Careers Advice and Guidance

CONTACT DETAILS

E. lyndsey.boardman@gceducationandskills.ac.uk
T. 0161 225 4241

MANCHESTER YOUNG LIVES

Business Administration
Customer Service
Retail
Employability
Enrichment activities
Functional Skills English and Maths

CONTACT DETAILS

E. P.Fletcher@manchesteryounglives.org.uk

ONE MANCHESTER

Award in Skills for Further Learning & Employment - various sector-based pathways
Preparation for Work
Work Experience
Employability and Foundations for Learning and Life

CONTACT DETAILS

E. Nicola.Burns@onemanchester.co.uk
T. 07940 721 902

SKILLS CONSTRUCTION CENTRE

Multi Trade Construction (Bricklaying, Plastering, Tiling, Joinery)
Employability Skills
Foundations for Learning and Life

CONTACT DETAILS

E. sonya.daley@skillscc.com

THE MANCHESTER COLLEGE (starting Jan 2021)

Preparation for Work
Employability and Foundations for Learning and Life
Work Experience

CONTACT DETAILS

E. MRigg@tmc.ac.uk



OLDHAM

LOCAL AUTHORITY

ONE MANCHESTER (FIRST CHOICE HOMES)

Skills for Further Learning & Employment

Various Sector based pathways

Preparation for Work

Work Experience

Employability and Foundations for Learning

CONTACT DETAILS

E. Nicola.Burns@onemanchester.co.uk

T. 07940 721 902

SOG OLDHAM

Introduction to Construction

Introduction to IT

Employability Skills

Enrichment Activities

Work Experience

Careers Advice and Guidance

CONTACT DETAILS

E. jill.hudson@gceducationandskills.ac.uk

T. 0161 359 3017

ROCHDALE

LOCAL AUTHORITY

ROCHDALE TRAINING CENTRE

Introduction to Construction

Retail

Employability Skills

Enrichment Activities

Work Experience

Careers Advice and Guidance

CONTACT DETAILS

E. lyndsey.boardman@gceducationandskills.ac.uk

T. 01706 717 860

EMPLOYMENT LINKS PARTNERSHIP (ELP 19-24)

Employability and Foundations for Learning and Life

Preparation for Work

Various Sector Based Pathways

Work Experience

CONTACT DETAILS

E. helen.darwent@rochdale.gov.uk

T. 01706 926367/ 07946 629306

SALFORD TRAINING CENTRE

Retail
Employability Skills
Enrichment Activities
Work Experience
Careers Advice and Guidance

CONTACT DETAILS

E. caroline.simpson@gceducationandskills.ac.uk
T. 07710 116 130

ONE MANCHESTER (FORVIVA SALFORD)

Skills for Further Learning & Employment
Various Sector based pathways
Multi trade Construction
Preparation for Work
Work Experience
Employability and Foundations for Learning and Life

CONTACT DETAILS

E. Nicola.Burns@onemanchester.co.uk
T. 07940 721 902

GROWTH COMPANY EMPLOYMENT

Care
Covid Awareness
Facilities
Hospitality
Retail
Warehouse
Wellbeing
Work Experience

CONTACT DETAILS

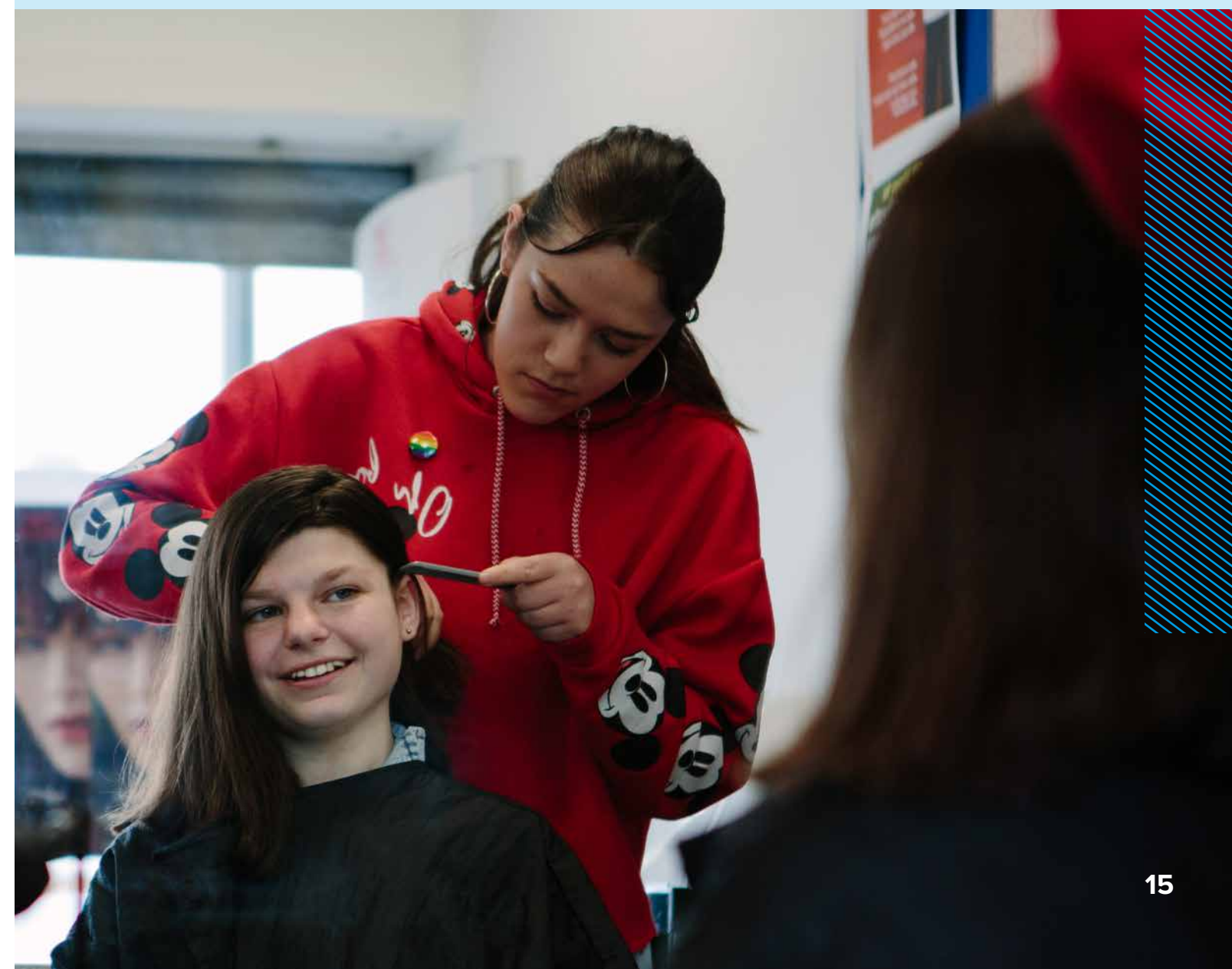
E. Jayne.Livingstone@gcemployment.uk
T. 07595 465 315

STOCKPORT TRAINING CENTRE

Retail
Employability Skills
Enrichment Activities
Work Experience
Careers Advice and Guidance

CONTACT DETAILS

E. Joann.Webster@gceducationandskills.ac.uk
T. 0161 476 7400





TAMESIDE LOCAL AUTHORITY

TAMESIDE TRAINING CENTRE

Introduction to Construction
Introduction to IT
Employability Skills
Enrichment Activities
Work Experience
Careers Advice and Guidance

CONTACT DETAILS

E. jill.hudson@gceducationandskills.ac.uk
T. 0161 359 3017

GROWTH COMPANY EMPLOYMENT

Care
Covid Awareness
Facilities
Hospitality
Retail
Warehouse
Wellbeing
Work Experience

CONTACT DETAILS

E. Jayne.Livingstone@gcemployment.uk
T. 07595 465 315

TRAFFORD LOCAL AUTHORITY

GROWTH COMPANY EMPLOYMENT

Care
Covid Awareness
Facilities
Hospitality
Retail
Warehouse
Wellbeing
Work Experience

CONTACT DETAILS

E. Jayne.Livingstone@gcemployment.uk
T. 07595 465 315

SSG TRAFFORD

Retail
Employability Skills
Enrichment Activities
Work Experience
Careers Advice and Guidance

CONTACT DETAILS

E. dianne.royle@gceducationandskills.ac.uk
T. 07747 217 782

WIGAN LOCAL AUTHORITY

WIGAN TRAINING CENTRE

Retail
Employability Skills
Enrichment Activities
Work Experience
Careers Advice and Guidance

CONTACT DETAILS

E. Joann.Webster@gceducationandskills.ac.uk
T. 01942 527 775

Where next?

Whilst on the Skills Support for Growth programme our dedicated Team will support a young person with their progression. Whether they are applying to college, for one of our courses or apprenticeships, looking and applying for jobs, we will support them every step of the way.

At the Growth Company Education and Skills, we have a wide range of pre-apprenticeships, apprenticeships and courses which a young person can progress on to.

Pre- Apprenticeship (Study Programme)

For those aged 16 – 18 who wish to progress onto an apprenticeship but don't feel quite ready, then a pre-apprenticeship (Study Programme) is an ideal option – they will gain hands-on experience that employers are looking for.

We have nine training centres across Greater Manchester and St Helens that offer an alternative route to college after you leave school.

We have courses available in these vocational areas:

- Accountancy
- Automotive (Trafford Park only)
- Business Administration
- Childcare
- Construction (in Tameside, Rochdale and Trafford Park only)
- Customer Service and Retail
- Employability
- Engineering and Manufacturing
- Functional Skills in English and Maths
- GCSEs in English and Maths
- Hairdressing (Longsight Training Centre only)
- Health & Social Care
- Work experience in an area of your choice

Apprenticeships

Whatever industry a young person wants to work in, apprenticeships will give them real experience that will help them to go far in their career. Best of all, an apprenticeship is a real job that pays a wage - so they will be earning while they learn.

If a young person wants to go straight into employment – with the advice and guidance from our team, we can help them to apply for work in their chosen sector and prepare them for interviews and starting work.

If a young person wants to apply and enrol on to a College course– we can help them with their application and get them ready for interviews and open events.

Disclaimer

All information is correct at time of print. However, the Growth Company and suppliers reserves the right to change or amend programmes as necessary.



Skills Support^G for Growth



European Union
European
Social Fund