



# Merton Family Hub

## What are Family Hubs?

**The Merton Family Hub is a place where children, young people and their families can access the support, help and advice they need.**

We have brought together 24 'core' services to offer a variety of advice and support to families with children aged 0-19 (or up to 25 with Special Educational Needs and Disabilities.)

## Family Hub Goals:

### Access:

Family Hubs offer a simple way for families to access help and support, when and where they need it.

### Connections:

Family Hubs aim to improve connections between services and reduce the need to keep repeating lots of information. This is achieved by services working together through co-location, data sharing and a common approach to their work.

### Relationships:

Family Hubs focus on the relationships that carry us all through life, by building on family strengths, as a way of helping to achieve lasting change.

# How can I access Family Hub services?

Support services are available from **two** main Family Hub buildings:

1) Phipps Bridge Youth Centre and Church Road Childrens Centre

2) Acacia Children Centre and Acacia Adventure Playground

To ensure easy access, some Family Hub services are also available across our **Family Hub Network Delivery locations** including libraries, children centres and youth centres.

Family Hubs are designed with families in mind, providing warm and welcoming spaces, that offer services tailored for both families and young people.

[Find out more about our network delivery locations!](#)

## Digital Offer



You can also get support and information through our "virtual offer." Our recently upgraded information service directory enables families and young people to access information and resources through online.

[Find out more about our Family Hub Directory!](#)

# What Family Hub services are available in my local area?

Activities For Children 0-5

Birth Registration

Debt And Welfare Advice

Domestic Abuse Support

Early Language and The Home Learning Environment

Early Childhood Education & Care (ECEC)

Health Visiting

Housing

Infant Feeding

Targeted Family Support Services

Local Authority  
0-19 Public Health Services

Mental Health Services

Midwifery

Nutrition And Weight Management

Oral Health Improvement

**Perinatal Mental Health Support**

**Parenting Support**

**Improving Whole Family Relationships**

**Send Support And Services**

**Stop Smoking Support**

**Substance Misuse Support**

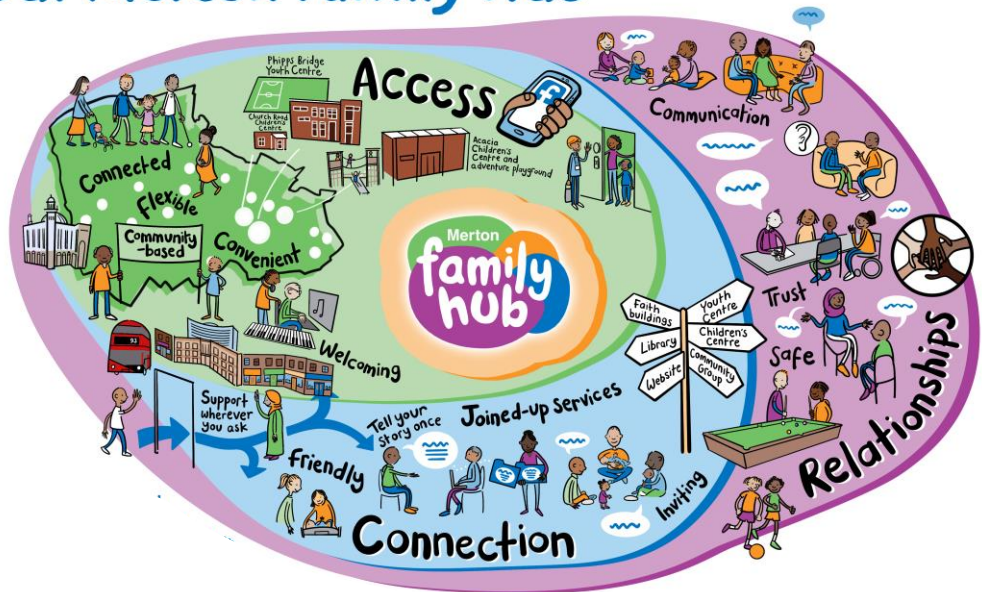
**Youth Justice**

**Youth Services**

# Merton Family Hub Vision

The visual for 'Our Merton Family Hub' has been created from insights gathered by Parents, Carers, Young people and partner services.

## Our Merton Family Hub



## Connecting families and young people with access to help when and where they need it

Our Merton Family Hub Vision reflects feedback gathered from families, young people, community partners and wider services about how they would want to experience, and be part of, Family Hub services here in Merton.

For more information about Family Hubs please visit [www.merton.gov.uk/familyhubs](http://www.merton.gov.uk/familyhubs)

The jigsaw reflects 24 core services that should be available through Family Hubs



## Merton Family Hub Introductory Video

[Watch our short video on our Family Hubs in Merton!](#)



For more information, visit:



[Merton Family Hub Webpage](#)



[Merton Family Hub Service Directory](#)



[Merton Safeguarding Children Partnership](#)

## Social Media

[Merton Family Hub Facebook page.](#) Follow us for regular updates.

Find us on 