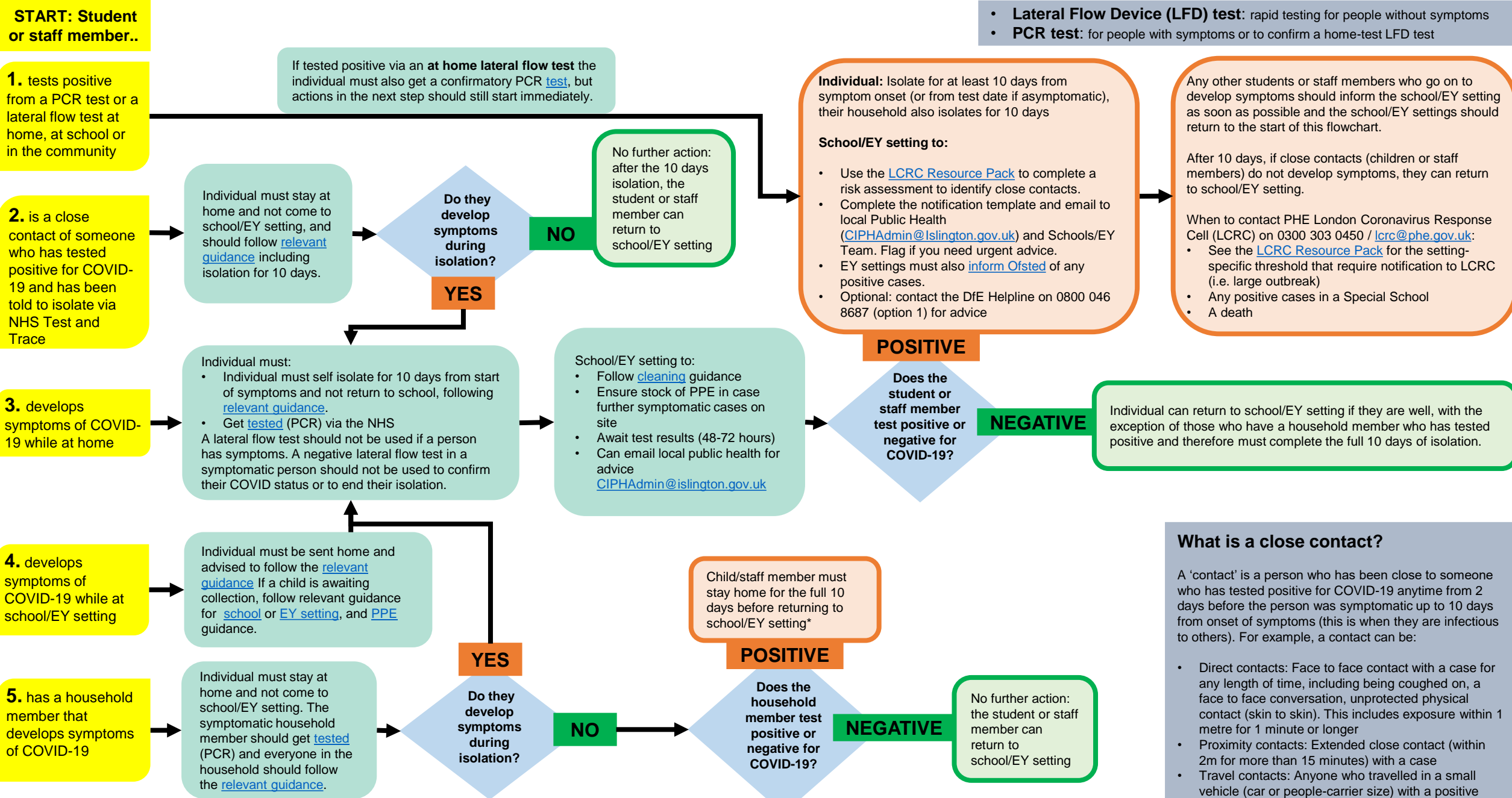


Process flowchart: suspected or confirmed case of COVID-19 in schools or Early Years (EY) settings - February 2021



What is a close contact?

A 'contact' is a person who has been close to someone who has tested positive for COVID-19 anytime from 2 days before the person was symptomatic up to 10 days from onset of symptoms (this is when they are infectious to others). For example, a contact can be:

- Direct contacts: Face to face contact with a case for any length of time, including being coughed on, a face to face conversation, unprotected physical contact (skin to skin). This includes exposure within 1 metre for 1 minute or longer
- Proximity contacts: Extended close contact (within 2m for more than 15 minutes) with a case
- Travel contacts: Anyone who travelled in a small vehicle (car or people-carrier size) with a positive case

*The full 10 days isolation period starts from the day the first person in the household became ill and the first day of self-isolation is counted as day 0.