

CONF – Do not share

Lambeth Housing Partnership Contact Book Directory

(Registered Providers & Council Contacts)

Feb 2025

Version Control - February 2025 (22.01.25)

Info on changes – Role changes

Updated by: Shujah Iqbal, Housing Liaison & Partnership Manager /Linda Oginni Head of Housing Partnerships

For enquiries contact - housingpartnership@lambeth.gov.uk



Contact Book Directory Guidance

How to use this contact book

Thank you for your interest in this resource. This contact book directory is intended for use by Council Officers, Members, and Registered Provider partner organisations for the purpose of enhancing communication and collaboration among services and teams.

We ask that you please do not share this resource with the general public.

If you have any questions or concerns about the contact book directory, please feel free to send an email to housingpartnership@lambeth.gov.uk

Examples of who this information can be shared with:

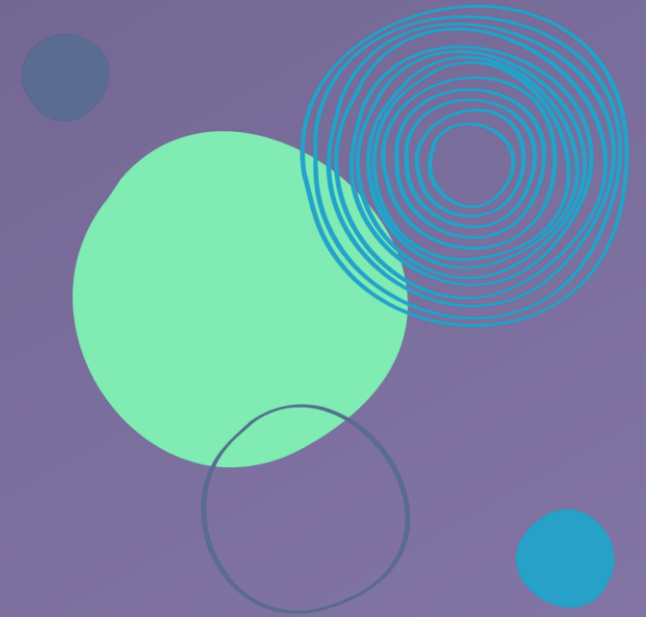
- Lambeth Council Internal Staff
- Lambeth Councillors
- Lambeth Housing Partnership Member Organisations – Ekaya, Hyde, L&Q, MTVH , Sovereign Network Group, SW9 Community Housing, Notting Hill Genesis, Southern Housing, Peabody, The Guinness Partnership, Wandle

Please note that this directory is regularly updated to reflect role changes and additions.

Please send a request to housingpartnership@lambeth.gov.uk if you would like to be added to the mailing list.

4	Lambeth Council Services & Leads	24	Notting Hill Genesis	39	Summary of Changes
13	Councillors and Cabinet Member Portfolios	25	Southern Housing (formerly Optivo)		
18	Registered Provider Leads	26	Peabody		
19	Ekaya Housing Association	27	The Guinness Partnership		
20	Hyde Group	28	Wandle		
21	London & Quadrant (L&Q)	29	Other Registered Providers		
22	Metropolitan Thames Valley (MTVH)	31	Out of Hours and Emergency Contacts		
23	Sovereign Network Group & SW9 Housing	34	RP Homes and Ward Boundaries		

Lambeth Council Services and Leads



How to access our services

The best way to access all Lambeth Council services is through our website <https://www.lambeth.gov.uk/>

Additionally, for news and blog posts, you can visit our website <https://love.lambeth.gov.uk/>

Cost of living, money and debt support for residents

Support is available from the council, local charities, and community groups <https://www.lambeth.gov.uk/community-solutions/cost-living-money-debt>

Support for vulnerable residents

Anyone who is vulnerable, cannot easily use the phone or website and needs to access one of the following services:

- Accessible Transport, i.e. Blue Badges, and Taxi Cards
- Benefits and Council Tax Support
- Housing Advice, for those at risk of being made homeless
- Council housing rents and income
- School admissions
- Adult and Children's Social Services
- Council Tenancy enquiries

Residents can book appointments using the [Customer Service Centre face-to-face support service](#) to use online services themselves, or to obtain face-to-face support with council staff (who can also scan documents for them).

The Lambeth Customer Centre is at the Lambeth Civic Centre, 6 Brixton Hill, London, SW2 1EG, it is open from 9am till 5pm, Monday-Friday and can be called **0207 926 1000**.

In addition, residents can also visit their local library if they need help and support with completing forms.

Main Switchboard

020 7926 1000

Accessible transport

Travel permits and help with transport

<https://www.lambeth.gov.uk/streets-roads-transport/travel-permits-help-with-transport>

020 7926 7777

accessibletransport@lambeth.gov.uk

Adult Social Care and Health

Adult social care and health

www.lambeth.gov.uk/adult-social-care-and-health
020 7926 5555

AdultSocialCare@lambeth.gov.uk

Benefits and Support

Register Office

www.lambeth.gov.uk/about-council/contact-us/contact-details/benefits

034 5302 2312

benefitsinfo@lambeth.gov.uk

Births, death, marriages and civil partnership

Register Office

<https://www.lambeth.gov.uk/about-council/contact-us/contact-details/-register-office>

020 7926 9420

registeroffice@lambeth.gov.uk

Building Control

Building Control

www.lambeth.gov.uk/planning-and-building-control

020 7926 9000

020 7926 1150

buildingcontrol@lambeth.gov.uk

Business rates and licensing

<https://www.lambeth.gov.uk/business-services-rates-and-licensing>

020 8315 2255

businessrates@lambeth.gov.uk

Children and Young People Mental Health Service (CAMHS)

www.lambeth.gov.uk/CAMHS

020 3228 7370

Children, young people and families

www.lambeth.gov.uk/children-young-people-and-families

020 7926 5555

Council Tax

<https://www.lambeth.gov.uk/council-tax>

0345 302 2312

counciltax@lambeth.gov.uk

Community Hubs

Community hubs

<https://www.lambeth.gov.uk/your-community/get-involved/community-groups-projects/community-hubs>

- Carnegie Hub
- High Trees Community development
- Lambeth Accord – We are 336
- Minet Hub
- Slade Gardens Adventure Playground
- Stockwell Hub
- Woodlawns Hub

Educational Psychology Service

Educational psychology service

<https://www.lambeth.gov.uk/lambeths-send-local-offer/im-parent-or-carer/specialist-send-support-services/educational-psychology-service>

020 7926 9658

Leps@lambeth.gov.uk

0739227520



Lambeth Council Services

Elections and Council

<https://www.lambeth.gov.uk/voting-elections>
020 7926 2254
electoralservices@lambeth.gov.uk

Events Team

www.eventlambeth.co.uk
020 7926 6207
Events@lambeth.gov.uk

Every Pound Counts

<https://www.lambeth.gov.uk/benefits-financial-support/benefits-advice-services>
020 7926 5555
EveryPoundCounts@lambeth.gov.uk

Families Information Service directory

www.lambeth.gov.uk/fis-directory
020 7926 9558
fis@lambeth.gov.uk

Film Office

<https://film.lambeth.gov.uk>
020 7926 5489
filming@lambeth.gov.uk

Food Safety

www.lambeth.gov.uk/business-rates-services-licensing/food-hygiene-standards/contact-food-health-safety-team
020 7926 6110
foodhealthandsafety@lambeth.gov.uk

Freedom of Information Enquiries

HMFOI@lambeth.gov.uk

Health and Safety

020 7926 6109
healthandsafety@lambeth.gov.uk

Home Ownership Services

<https://lambeth.gov.uk/housing/homeowners>
020 7926 1116
HMHomeownership@lambeth.gov.uk

Housing (LBL)

<https://lambeth.gov.uk/housing/finding-home/social-housing/contact-lambeth-housing>
020 7926 6000

Housing Repairs and Rents

www.lambeth.gov.uk/council-tenants-and-homeowners/tenants
0207 9926 6000

Housing Advice

<https://lambeth.gov.uk/housing/finding-home/homelessness-prevention-housing-advice>

- Contact the Housing Advice team
- Rough Sleepers
- Find private rented housing
- Moving because of a relationship breakdown
- Domestic Violence or Abuse
- Apply for Council and Social Housing
- Housing Benefit and Council Tax Support
- Eviction by private landlord, council or Housing Association
- Asked to move out by friends or family
- Universal Credit
- Day Centres for Rough Sleepers
- Day centres for rough sleepers
- Duty to refer - people at risk of homelessness

Residents can contact the Housing Advice team to make a homelessness application
020 7926 4200 (9am - 5pm, Mon - Fri).
housingadvice@lambeth.gov.uk

Housing Support Team

020 7926 6399
Welfaresolutions@lambeth.gov.uk



Lambeth Council Services

Library resources

www.lambeth.gov.uk/libraries
020 7926 0750
libraries@lambeth.gov.uk

Licensing

www.lambeth.gov.uk/business-services-rates-and-licensing
020 7926 6108
licensing@lambeth.gov.uk

Noise Nuisance, pollution and anti-social behaviour

www.lambeth.gov.uk/noise-nuisance-pollution-and-anti-social-behaviour
020 7926 5000

Parenting Support

www.lambeth.gov.uk/parenting
07547 805 700
parenting@lambeth.gov.uk

Parking Services

www.lambeth.gov.uk/parking-transport-and-streets
0207 926 9000
environment@lambeth.gov.uk

Pest Control

<https://lambeth.gov.uk/pest-control-services>
020 7926 8860
pestcontrol@lambeth.gov.uk

Planning and building control

www.lambeth.gov.uk/planning-and-building-control
020 7926 1180
planning@lambeth.gov.uk

Pollution and Noise

<https://lambeth.gov.uk/noise-nuisance-anti-social-behaviour-and-safety>
Night-time telephone: 020 7926 5999
Day-time telephone: 020 7926 6111
noise@lambeth.gov.uk

Public Protection, Assurance and Regulatory Services

020 7926 5000
PPARS@lambeth.gov.uk

Rents Team

020 7926 8790
RentsTeam@lambeth.gov.uk

Resident Engagement (Get Involved)

Lambeth 500+
Tenant and Residents Association
The Getting Involved Grant

020 7926 3401
gettinginvolved@lambeth.gov.uk

Rubbish and Recycling

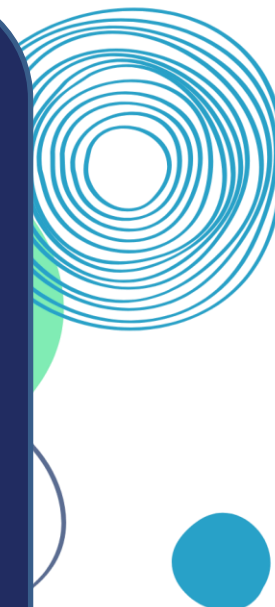
www.lambeth.gov.uk/rubbish-and-recycling
020 7926 9000
streetcarecallcentre@lambeth.gov.uk

Scrutiny

scrutiny@lambeth.gov.uk

School Admissions

www.lambeth.gov.uk/school-admissions
0207 926 9053
CSCadmissions@lambeth.gov.uk



Lambeth Council Services

SEND Support

<https://www.lambeth.gov.uk/lambeths-send-local-offer>
020 7926 9460
sendsupport@lambeth.gov.uk

Tenancy Sustainment and Support Service

<https://www.lambeth.gov.uk/get-assistance-with-your-private-sector-tenancy>
020 7926 0020
TSTenquiries@lambeth.gov.uk

Temporary Accommodation

0207 926 9109
temporaryaccommodation@lambeth.gov.uk

Trading Standards

www.lambeth.gov.uk/business-services-rates-and-licensing/food-safety/trading-standards-guide
020 7926 5000
tradingstandards@lambeth.gov.uk

Volunteering

<https://volunteer.lambeth.gov.uk/volunteers/search>

Young Peoples Information

<https://www.lambeth.gov.uk/children-young-people-families/young-peoples-support>

Lambeth Council Leads

Aids and Adaptations

Menna Bond
HIA Manager
MBond@lambeth.gov.uk
020 7926 4445

Team inbox

hiacaseofficers@lambeth.gov.uk

Allocations

Debbie Wilson
Allocations & Verifications Team Manager
(Permanent Lets only)
Dwilson@lambeth.gov.uk
0207 926 4251

Building Control Lead

Nitesh Pankhania
Assistant Director, Building Control
NPankhania@lambeth.gov.uk
020 7926 8728

CCTV Lead

Solly Brown
CCTV Operations Manager
SBrown@lambeth.gov.uk
020 7926 3976

Community Safety (Safer Lambeth)

Trevor East
Community Safety Partnership Manager
TEast@lambeth.gov.uk
0207 926 6065

Domestic Abuse Housing Lead

Jacqueline Cardenas-Mena
Women's Housing Navigator
Jcardenas2@lambeth.gov.uk
0207 926 3175

Estate Services Lead

Linda Elliott
Head of Estate Services
LElliott@lambeth.gov.uk
0207 926 1878

Estate Renewal and New Homes

Luke Parker
AD Housing Delivery
LParker2@lambeth.gov.uk
020 7926 4141

Environmental Services

Cormac Stokes
Head of Waste and Cleansing Services
CStokes@lambeth.gov.uk
020 7926 0528/ 07976 490081

Fraud Lead

Michael O'Reilly
Counter Fraud Manager
Moreilly2@lambeth.gov.uk
0207 926 2993

Homeless Prevention Lead

Oluwatoyin Ogunyemi
Homeless Prevention Service Manager
OOgunyemi@lambeth.gov.uk
0207 926 3189

Housing Partnerships Lead

Linda Oginni
Head of Housing Partnerships
loginni@lambeth.gov.uk
0207 926 9311

Housing Welfare Advice Lead

Lionel Ighodaro
Housing Support Team Manager
Lighodaro@lambeth.gov.uk
0207 926 7982

Income Maximisation

Daniel Day
Head of Income Maximisation
dday@lambeth.gov.uk



Main contact for housing enquiries

0207 926 6000
<https://beta.lambeth.gov.uk/>

Complaints

complaints@lambeth.gov.uk
020 7926 9694

Lambeth Council Leads

Neighbourhoods and Repairs Leads

Anna Tran
Head of Neighbourhood (North Area)
Clapham, Stockwell and Vassall
Atran@lambeth.gov.uk
0207 926 4113

Tunde Akinyooye
Head of Neighbourhood (South Area)
Brixton, Streatham, Tulse Hill, Norwood
takinyooye@lambeth.gov.uk
0207 926 9662

Parking and Highways Enforcement

Littering, dog fouling, skips, scaffolding, school crossing, patrols, abandoned vehicles, parking fraud investigations

Jonathan Pook
Head of Parking
jpook@lambeth.gov.uk
0207 926 2823

Ashley Brandon
Parking Operations Manager
Parking fraud investigations
abrandon@lambeth.gov.uk
0207 926 6695

Tom Gallagher
Highways Enforcement & Licensing Manager
tgallagher@lambeth.gov.uk
0207 926 3232

Planning Enquiries

Kiri Shuttleworth
Head of Development Management
kshuttleworth@lambeth.gov.uk
020 7926 6931

Prevention of Counter Terrorism

Rupert Sutton
Prevent Programme Manager
RSutton@lambeth.gov.uk
020 7926 7025

Private Rented Sector Lead

Junior Omo-Idahosa
Private Sector Solutions Team Manager
jaomo-idahosa@lambeth.gov.uk
020 7926 0047

Public Protection (Strategic Partnerships)

Robert Harper
Head of Strategic Partnerships
RHarper@lambeth.gov.uk
0207 926 3030

Repairs and Maintenance Services Lead

Barry Montgomerie
Head of Repairs
BMontgomerie@lambeth.gov.uk

Resident Involvement

Muhem Miah
Neighbourhood Working & Engagement
Coordinator
MMiah@lambeth.gov.uk
0207 926 7504

Sandra Evangelista
Neighbourhood Working & Engagement
Coordinator
Sevangelista@lambeth.gov.uk



Lambeth Council Leads

Safeguarding Adults and Mental Health Referrals

Raise safeguarding concerns online
[Lambeth Safeguarding Adults Board website](https://www.lambeth.gov.uk/safeguardingadults)
safeguardingadults@lambeth.gov.uk (advice only – not a referral point)

Sheltered Housing

Peter Mokogwu
Sheltered Housing Service Manager
PMokogwu@lambeth.gov.uk
0207 926 1740

Single Point of Access (SPA)- Lambeth Together
Contact SPA if you are worried about a Lambeth resident's mental health and they need more support than their GP can provide.

LambethSPAReferrals@slam.nhs.uk
0800 090 2456 (Mon - Fri 9am to 5pm).

The service helps adults aged 18 to 65 to get the right mental health support. Self –referrals can be made too.

TA/Accommodation Services Lead

Ode Ogwu
Temporary Accommodation Team Manager
OOgwu@lambeth.gov.uk

Tenancy Enforcement/ ASB

Margaret Akinso
Head of Tenancy Enforcement
Makinso@lambeth.gov.uk
0207 926 4334

Street Cleaning, Refuse Collection, Graffiti Removal

Tom Lawrence
Contract Manager - Serco
tlawrence@lambeth.gov.uk
0207 926 0931

Street Cleansing

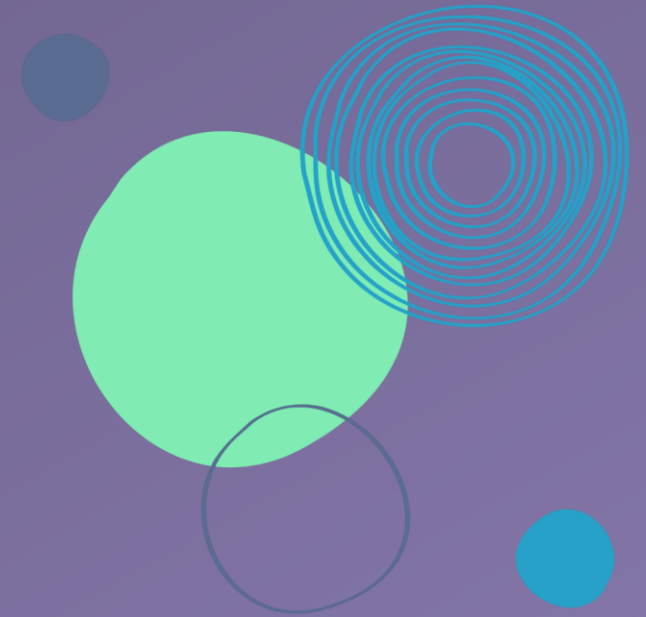
Doug Perry
AD Waste Management, Cleansing & Ancillary Services
dperry@lambeth.gov.uk
0207 926 1255

Youth and Young Adult Coordinator

Vacant



Councillors and Cabinet Member Portfolios



Cabinet

CLlr Claire Holland **Leader of the Council**

CLlr Danny Adilypour,
Deputy Leader of the Council
& Cabinet Member for Planning Strategy, Investment & Housing Delivery

CLlr Rezina Chowdhury,
Deputy Leader of the Council
& Cabinet Member for Sustainable Lambeth & Clean Air

CLlr Donatus Anyanwu,
Cabinet member for Stronger Communities

CLlr David Amos
Cabinet Member for Finance

CLlr Jacqui Dyer & CLlr Tim Windle (job share)
Cabinet Members for Healthier Communities

CLlr Fred Cowell & CLlr Nanda Manley-Browne (job share)
Cabinet Members for Equalities, Governance & Change

CLlr Mahamed Hashi
Cabinet Member for Safer Communities

CLlr Ben Kind
Cabinet Member for Children & Families

CLlr Marcia Cameron
Cabinet Member for Economic Inclusion

Deputy Cabinet Members

CLlr David Bridson
Planning Strategy, Investment & Housing Delivery

CLlr Issa Issa
Planning Strategy, Investment & Housing Delivery

CLlr Saleha Jaffer
Stronger Communities

CLlr Irfan Mohammed
Economic Inclusion

Policy leads

CLlr Tina Valcarcel
Policy Lead for Disabilities; reporting to Councillor Fred Cowell and Councillor Nanda Manley-Browne

CLlr Verity McGivern
Policy Lead for Age-friendly Lambeth; reporting to CLlr Jacqui Dyer & CLlr Tim Windle

CLlr Ibtisam Adem
Policy Lead for Sanctuary Seekers and Migrants; reporting to CLlr Jacqui Dyer & CLlr Tim Windle

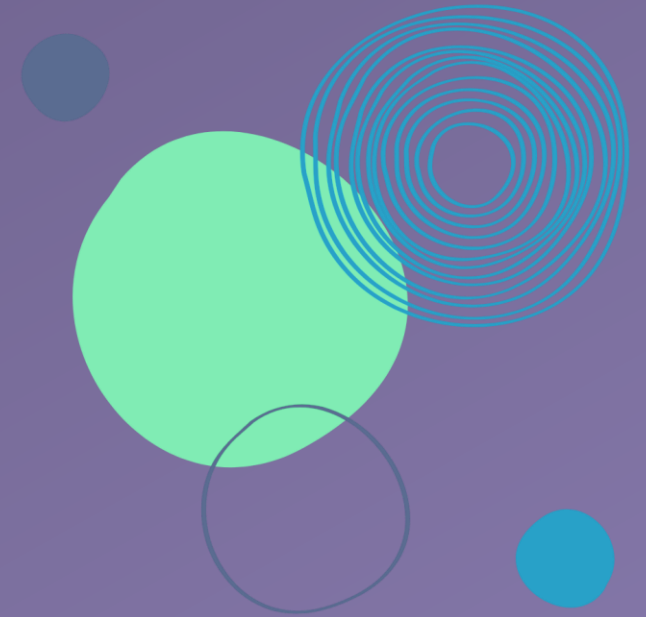
List of Councillors and their wards

Brixton Acre Lane	Cllr Sarbaz Barznji (Labour) SBarznji@lambeth.gov.uk	Cllr David Bridson (Labour) Deputy - Planning Strategy, Investment & Housing Delivery dbridson@lambeth.gov.uk	Cllr Maria Kay (Labour) mkay@lambeth.gov.uk
Brixton North	Cllr James Bryan (Labour) Deputy Chief Whip JBryan@lambeth.gov.uk	Mayor Cllr John-Paul Ennis (Labour) JEnnis1@lambeth.gov.uk	Cllr Nanda Manley-Browne (Labour) Cabinet Member for Equalities & Corporate Resources (job share) nmanleybrowne@lambeth.gov.uk
Brixton Rush Common	Cllr Marcia Cameron (Labour) Cabinet Member for Economic Inclusion mcameron@lambeth.gov.uk	Deputy Mayor Cllr Adrian Garden (Labour) agarden@lambeth.gov.uk	Cllr Ben Kind (Labour) Cabinet Member for Children and Families bkind@lambeth.gov.uk
Brixton Windrush	Cllr Donatus Anyanwu (Labour) Cabinet Member for Stronger Communities, Leisure & Sport danyanwu@lambeth.gov.uk	Cllr Scarlett O’Hara (Labour) Chief Whip sohara@lambeth.gov.uk	
Clapham Common & Abbeville	Cllr Ben Curtis (Liberal Democrats) – Chief Whip BCurtis@lambeth.gov.uk	Cllr Alison Inglis-Jones (Labour) Food Poverty Champion AInglisJones@lambeth.gov.uk	
Clapham East	Cllr Andrew Collins (Labour) ACollins1@lambeth.gov.uk	Cllr Jessica Leigh (Labour) Armed Forces Champion jleigh@lambeth.gov.uk	
Clapham Park	Cllr Verity McGivern (Labour) Age Friendly Borough Champion VMcgivern@lambeth.gov.uk	Cllr Irfan Mohammed (Labour) Deputy - Economic Inclusion imohammed@lambeth.gov.uk	Cllr Martin Tiedmann (Labour) Corporate Committee Chair mtiedemann@lambeth.gov.uk
Clapham Town	Cllr Linda Bray (Labour) lbray@lambeth.gov.uk	Cllr David Robson (Labour) Chair of Licensing DRobson@lambeth.gov.uk	Cllr Timothy Windle (Labour) Cabinet Member for Healthier Communities (job-share) twindle@lambeth.gov.uk
Gipsy Hill	Cllr Christine Banton (Labour) CBanton1@lambeth.gov.uk	Cllr Rebecca Spencer (Labour) RSpencer@lambeth.gov.uk	
Herne Hill & Loughborough Junction		Cllr Pauline George (Labour) Tackling Violence Affecting Young People Champion pgeorge@lambeth.gov.uk	Cllr Deepak Sardiwal (Labour) DSardiwal@lambeth.gov.uk
Kennington	Cllr David Amos (Labour) Cabinet Member for Finance and Cost of Living damos@lambeth.gov.uk	Cllr Liam Daley (Labour) LADaley@lambeth.gov.uk	Cllr Jacqui Dyer (Labour) Cabinet Members for Healthier Communities (job share) jdyer3@lambeth.gov.uk

Ward			
Knight's Hill	Cllr Ibtisam Adem (Labour) Policy Lead for Sanctuary Seekers and Migrants IAdem@lambeth.gov.uk	Cllr Jackie Meldrum (Labour) jmeldrum@lambeth.gov.uk	Cllr Emma Nye (Labour) enye@lambeth.gov.uk
Myatt's Field	Cllr Paul Gadsby (Labour) pgadsby@lambeth.gov.uk	Cllr Annie Gallop (Labour) Vice-Chair of Overview and Scrutiny agallop@lambeth.gov.uk	
Oval	Cllr Diogo Costa (Labour) Digital Strategy and Inclusion Champion DCosta@lambeth.gov.uk	Cllr Claire Holland (Labour) Leader of the Council cholland@lambeth.gov.uk	Cllr Issa Issa (Labour) Planning Strategy, Investment & Housing Delivery IIssa@lambeth.gov.uk
St Martin's	Cllr Olga FitzRoy (Labour) OFitzroy@lambeth.gov.uk	Cllr Saleha Jaffer (Labour) Deputy - Stronger Communities SJaffer@lambeth.gov.uk	
Stockwell East	Cllr Dr. Mahamed Hashi (Labour) Cabinet Member for Safer Communities mhashi@lambeth.gov.uk	Cllr Tina Valcarcel (Labour) Policy Lead for Disabilities cvalcarcel@lambeth.gov.uk	
Stockwell West & Larkhall	Cllr Joe Dharampal-Hornby (Labour) Vice-Chair of Overview and Scrutiny JDharampalHornby@lambeth.gov.uk	Cllr David Oxley (Labour) Vice-Chair of Overview and Scrutiny DOxley@lambeth.gov.uk	Cllr Joanne Simpson (Labour) Animal Welfare Champion jsimpson2@lambeth.gov.uk
Streatham Common & Vale	Cllr Daniel Adilypour (Labour) Deputy Leader of the Council (Planning Strategy, Investment & Housing Delivery) dadilypour@lambeth.gov.uk	Cllr Sarah Cole (Labour) Tel: 07526 567785 SCole4@lambeth.gov.uk	Cllr Dominic Armstrong (Labour) darmstrong@lambeth.gov.uk
Streatham Hill East	Cllr Liz Atkins (Labour) Chair Overview and Scrutiny latkins@lambeth.gov.uk	Cllr Rezina Chowdhury (Labour) Deputy Leader of the Council & Cabinet Member for Sustainable Lambeth and Clean Air rchowdhury@lambeth.gov.uk	

Ward			
Streatham Hill West & Thornton	Cllr Matthew Bryant (Liberal Democrats) Deputy Group Leader MBryant@lambeth.gov.uk	Cllr Donna Harris (Liberal Democrats) Group Leader DHarris6@lambeth.gov.uk	
Streatham St Leonard's	Cllr Martin Abrams (Labour) Public Transport Champion MAbrams@lambeth.gov.uk	Cllr Scott Ainslie (Green) sainslie@lambeth.gov.uk	Cllr Nicole Griffiths (Green) Group Co-Leader ngriffiths@lambeth.gov.uk
Streatham Wells	Cllr Malcolm Clark (Labour) Policy Lead for Transport and Neighbourhoods mclark@lambeth.gov.uk	Cllr Marianna Masters (Labour) Deputy Cabinet Member for Children & Families mmasters@lambeth.gov.uk	
Vauxhall	Cllr Martin Bailey (Labour) MBailey@lambeth.gov.uk	Cllr Tom Simon Swaine-Jameson tswainejameson@lambeth.gov.uk	Cllr Isla Wrathmell (Labour) IWrathmell@lambeth.gov.uk
Waterloo & South Bank	Cllr Sarina Da Silva (Labour) SDaSilva@lambeth.gov.uk	Cllr Ibrahim Dogus (Labour) idogus@lambeth.gov.uk	
West Dulwich	Cllr Judith Cavanagh (Labour) Young People's Advocacy Champion JCavanagh@lambeth.gov.uk	Cllr Fred Cowell (Labour) Cabinet Member for Equalities & Corporate Resources (job share) fcowell@lambeth.gov.uk	

Registered Providers and Leads



**Wards Covered**

Stockwell West & Larkhall 31% , Gipsy Hill 11% , Brixton Rush Common 10% Herne Hill & Loughborough Junction 8% , Brixton Acre Lane 7% , Clapham Park 7% , Knight's Hill 7% , Oval 6%

Partnerships, Housing Development & Regeneration

Ben Laryea
CEO
ben.laryea@ekaya.co.uk
020 7091 1809

Housing Management, Neighbourhoods, Estate Services, Community Safety, & Welfare

Olutayo Adesegun
Housing Service Manager
Olutayo.Adesegun@ekaya.co.uk
020 7091 1800

Repairs/Maintenance, Building Safety, ASB

TBC
020 7091 1800

Resident Involvement/Community Investment

TBC
020 7091 1800



Main inbox for enquiries
info@ekaya.org.uk

Complaints
Complaints@ekaya.co.uk

[Ekaya Complaints Policy](#)

Contact number
020 7091 1800

Ekaya Housing Association

020 7091 1800

145 Stockwell Road

London

SW9 9TN

<http://www.ekaya.co.uk/>



Wards Covered :

Stockwell East 38% , Stockwell West & Larkhall 32%, Kennington 20%, Oval 5%, Brixton North 2%

Tenancy and ASB Services

Natalie Nye
Head of Tenancy and ASB Services
natalie.nye@hyde-housing.co.uk

ASB Lead

Craig Kendall
ASB Team Leader
asb@hyde-housing.co.uk
0800 3 282282

Building Safety Lead

Liz Oliver
Safer Homes & Neighbourhoods Director
Liz.oliver@hyde-housing.co.uk
07392277520

Domestic Abuse Lead

Bankole Payne
Tenancy Team Manager
Bankole.payne@hyde-housing.co.uk
02073466523

Estate Services

Tony O'Connell
Estate Services Contract Manager
Tony.OConnell@hyde-housing.co.uk

Community Programmes

Julie Costley
Communities Programme Manager
Julie.Costley@hyde-housing.co.uk
07733887132

Housing Development/Regeneration/Partnership Lead

Johnathan Goldstraw
Senior Project Director
Johnathan.Goldstraw@hyde-housing.co.uk

Housing Management, Neighbourhoods & Partnerships Lead

Lesley Smith
Head of Building Safety and Neighbourhoods
lesley.smith@hyde-housing.co.uk

Repairs & Maintenance Services

Steve Austin
Head of Property Maintenance
Steve.austin@hyde-housing.co.uk
07826877262

Resident Involvement/Community Investment

Robert Cooper
Customer Involvement Manager
Robert.cooper@hyde-housing.co.uk
07918726081

Sustainability Lead

Anna Grant
Head of Asset Management
anna.austin@hyde-housing.co.uk

Community Programmes

Housing Advice Welfare Lead
Katie Ford
katie.ford@hyde-housing.co.uk

Customer Research

Luca Nania
Lead Customer Researcher
luca.nania@hyde-housing.co.uk

Main inbox for enquiries

Link to online general enquiries form
<https://www.hyde-housing.co.uk/contact-us/contact-us-online/general-enquiry/>

Customerservices@hyde-housing.co.uk

Complaints

Complaints@hyde-housing.co.uk or if there is a
Cllr or MP enquiries

Electedrepresentatives@hyde-housing.co.uk

[Hyde Complaints Process](#)

Hyde Group

0800 3 282 282

Head office address

30 Park Street. London

SE1 9EQ

<https://www.hyde-housing.co.uk/contact-us/>

Quick Links

[ASB Toolkit](#)

[Building Safety](#)

[Damp and Mould](#)

[Resident Handbook](#)

[Report a repair](#)

[Report Anti-Social Behaviour](#)



Wards Covered

Kennington 14%, Herne Hill & Loughborough Junction 14%, Brixton Rush Common 12%, Stockwell West & Larkhall 8%, St Martin's 7%, Knight's Hill 6%, Stockwell East 5%, West Dulwich 5%, Brixton Windrush 4%, Clapham Town 3%, Brixton North 3%, Vauxhall 3%, Myatt's Field 2%, Streatham St Leonard's 2%, Brixton Acre Lane 2%, Gipsy Hill 2%, Streatham Common & Vale 2%, Oval 2%, Streatham Wells 1%

ASB, Hoarding & Vulnerability Lead

Sharon Murphy
Head of Housing Specialisms
sharonmurphy@lqgroup.org.uk
Tel 02081893932 Mobile 07989210604

Housing Management, Estates, Neighbourhoods

Laura Hallett
Head of Housing
lhallett@lqgroup.org.uk
Tel 020 8189 1811 mobile 07825 055190

Alana Newton
Area Housing Manager
ANewton@lqgroup.org.uk
Tel 020 8189 1350 Mobile 07866136345

Karen Lennon
Area Housing Manager
KLennon@lqgroup.org.uk
Tel 020 8189 4880 Mobile 07970661240

Partnerships Lead

Arafat Hussain (Lambeth Lead))
Area Housing Manager
AHussain3@lqgroup.org.uk
Tel 0208 189 3972 Mobile 07971 341 859

Housing Advice Welfare Lead

Matt Bayliss
Head of Independent Lives Service
mbayliss@lqgroup.org.uk

Housing Development/Regeneration

Angie Hooper
Director of Business Development
Ahooper@lqgroup.org.uk

Repairs & Maintenance Services

Daniel Bestford
Maintenance Manager
danielbestford@lqgroup.org.uk

Resident Involvement/Community Investment

Suki Sarai
Acting Head of Resident Involvement and Accountability
Ssarai@lqgroup.org.uk

Sophie Leedham (currently on maternity)
Head of Resident Involvement
sleedham@lqgroup.org.uk



Main inbox for enquiries

<https://www.lqgroup.org.uk/contact-us/webforms/query-form>

Member's Enquiries:

membersenquiries@lqgroup.org.uk

Complaints

complaints@lqgroup.org.uk

[L&Q complaints process](#)

Contact number

Call Centre (24 hours) 0300 456 9998 / 0300 465 9996

London and Quadrant

Head office

29-35 West Ham Lane, London

E15 4PH

<https://www.lqgroup.org.uk/contact-us>

Quick Links

[Building Safety](#)
[Cost of Living](#)
[Tenants](#)
[Report a repair](#)
[Anti-Social Behaviour](#)
[Damp and Mould](#)



Metropolitan
Thames Valley



Wards Covered

Clapham Park 36% , Brixton Windrush 11%, Brixton Acre Lane 10%, St Martin's 9%, Oval 9%, Waterloo & South Bank 4%, Clapham Town 4%, Brixton North 3%

ASB Lead

Angie Banton
Head of Housing
Angie.Banton@mtvh.co.uk

Housing Management, Estates & Neighbourhoods Lead

Angie Banton
Head of Housing
Angie.Banton@mtvh.co.uk

Tyson Bunby
Lambeth Operations Lead Manager
Tyson.Bunby@mtvh.co.uk

Housing Advice Welfare Lead

Temi Bufford
Head of Strategy and Support
Temi.Bufford@mtvh.co.uk

Housing Development/Regeneration

Lisa Johnston
Head of Regeneration Projects
Lisa.johnston@mtvh.co.uk

Chief Executive

Melbourne (Mel) Barrett
(former CEO of Nottingham City Council, took over from Geeta Nanda)

Partnerships Lead

Sarah Willis
Head of Strategic Partnerships & National Delivery
Sarah.Willis@mtvh.co.uk

Repairs & Maintenance Services

Janet Cornthwaite
Senior Head of Property
Janet.cornthwaite@mtvh.co.uk

Siobhan Williams
Regional Repairs Manager
Siobhan.williams@mtvh.co.uk

Sarah Thompson
Head of Care & Support
Sarah.thompson@mtvh.co.uk

Resident Involvement/Community Investment

Emildah Chabata
Community Investment Regional Manager
Emildah.chabata@mtvh.co.uk



Main inbox for enquiries

contactus@mtvh.co.uk

Complaints

customercare@mtvh.org.uk

Member enquiries

service.improvement@mtvh.co.uk

MTVH Complaints Policy

0203 535 3535 - Metropolitan residents
0300 456 2929 - Thames Valley residents

Metropolitan Thames Valley

Lambeth Branch

91-93 New Park Road, London SW2 4AX

<https://www.metropolitan.org.uk/contact-us/>

Quick Links

[Anti-Social Behaviour](#)
[Building Safety](#) (homeowners)
[Cost of Living](#)
[Damp and Mould](#)
[Report a repair](#)



Wards Covered

Brixton 77%, Brixton Windrush 7%, Clapham Common & Abbeyville 5%, Streatham Hill & Thornton 3%, Clapham Town 3%

Building Safety

Simon Hall
Property Services Manager
Simon.Hall@sw9.org.uk
07795 644836

CCTV Lead

Keith Rowbury
CCTV & Security Consultant
Keith.Rowbury@me.com
07850 785487

Estates Services Lead

Michelle Levy
Estate Services Manager
Michelle.levy@sw9.org.uk
0207 326 3716

Housing Management

Neighbourhoods and ASB Lead

Patricia.Aihie
Neighbourhood and Customer Services Manager
Patricia.Aihie@sw9.org.uk
0207 326 3727

Anthony Akerele
Senior Neighbourhood Services Officer
Anthony.Akerele@sw9.org.uk
020 7326 3700

Housing Development/Regeneration

David Gooch
Executive Director of Development
David.Gooch@sng.org.uk
07585 401854

Housing Advice Welfare Lead

Lan Choung
Income Collection Team Leader
Lan.Choung@sw9.org.uk
0207 326 3748

Partnerships Lead

Jamie Ratcliff (Strategic Contact)
Chief Communities & Sustainability Officer
Jamie.Ratcliff@sng.org.uk
07824 561 248

Delroy Rankin (Operational contact)
Director
Delroy.rankin@sw9.org.uk
07960 373329

Resident Involvement/Community Investment

Komal Doan
Resident Engagement & Communications
Manager
Komal.Doan@sw9.org.uk
0207 326 3703

Repairs & Maintenance Services

Simon Hall
Property Services Manager
Simon.Hall@sw9.org.uk
07795 644836

Sustainability Lead

Jamie Ratcliff
Chief Communities & Sustainability Officer
Jamie.Ratcliff@sng.org.uk



Lambeth

Main inbox for enquiries
Info@sw9.org.uk

Complaints
complaints@sw9.org.uk

[SW9 Complaints Process](#)

0207 326 3700

Network Homes and (SW9 Community Housing)

SW9 Community Housing

6 Stockwell Park Walk,

London SW9 0FG

<https://www.networkhomes.org.uk/>

Quick Links (SW9)

[Anti-Social Behaviour](#)

[ASB Policy](#)

[Building Safety \(Network Homes\)](#)

[Cost of Living](#)

[Damp and Mould](#)

[Report a repair](#)

Notting Hill Genesis

Wards Covered

Vauxhall 18%, Oval 16%, Brixton North 10%, Brixton Rush Common 9%, Waterloo & South Bank 8%, St Martin's 5%, Knight's Hill 5%, Brixton Acre Lane 4%, Clapham Town 3%, Streatham Hill West & Thornton 3%, Streatham Hill East 3%, Streatham St Leonards 3%, Herne Hill & Loughborough Junction 2%, Stockwell East 2%, Clapham Park 2%

Building Safety

Andy Lord
Director of Compliance
Andy.Lord@nhg.org.uk
0203 987 1328

Estates Services Lead

Caroline Nolan
Estate Operation Manager
caroline.nolan@nhg.org.uk
02038150885

Housing Advice Welfare & Partnerships

Lauren Picton
Tenancy Sustainment & Safeguarding Manager
Lauren.Picton@nhg.org.uk
02039870949

PLEASE NOTE: For Safeguarding cases, please email Lauren Picton (LP) and copy in safeguarding@nhg.org.uk to provide details of who they are trying to reach at NHG. LP can follow it up with the case owners and escalate to managers if necessary.

Housing Management. Neighbourhoods, ASB

Rachel Lourenco
Rachel.Lourenco@nhg.org.uk
Head of Operations, Estate Management Agreement

Rachel Dow
Rachel.Dow@nhg.org.uk
Head of Operations (central region)
Including Lambeth, Westminster and RBKC

Younes Elachraoui
EMA Operations Manager, Lambeth
Younes.Elachraoui@nhg.org.uk

Susheel Thompson
Housing Operations Manager
Susheel.Thompson@nhg.org.uk

Gemma Robinson
Team Manager
Gemma.Robinson@nhg.org.uk
020 3815 1552

Housing Development/Regeneration

Joint Ventures Director
Jake Brodestsky
Jake.Brodestsky@nhg.org.uk

Andrew Allcock
Head of Client Delivery and New build
Andrew.Allcock@nhg.org.uk

Resident Involvement/Community Investment

Lorraine Gilbert
Head of Resident Engagement
lorraine.gilbert@nhg.org.uk

Ollie Levy
Resident Involvement Manager
Ollie.Levy@nhg.org.uk

Repairs & Maintenance Services

Brett Hohls
Director of Repairs
Brett.Hohls@nhg.org.uk
0203 815 0618

Sustainability Lead

Laura Shellard
Head of Sustainability
Laura.Shellard@nhg.org.uk

Main inbox for enquiries
info@nhg.org.uk

Complaints
<https://www.nhg.org.uk/contact-us/make-a-complaint/>

member.enquiries@nhg.org.uk

[Notting Hill Complaints Policy](#)

Contact Number
0208 357 5000

Notting Hill Genesis

Notting Hill Genesis Bruce Kenrick
House, 2 Killick Street, London N1 9FL

<https://www.nhg.org.uk/contact-us/>

Quick Links

[Anti-Social Behaviour ASB Policy](#)
[Building Safety News](#)
[Cost of Living](#)
[Damp and Mould \(policy\)](#)
[Damp and Mould Leaflet](#)
[Repairs and Maintenance](#)
[Resident Handbooks](#)



Wards Covered

Stockwell & Larkhall 20%, St Martin's 17%, Knight's Hill 10%, Myatt's Field 8%, Vauxhall 8%, Gipsy Hill 7%, Clapham Town 6%, Streatham Common & Vale 6%, Streatham Wells 4%, West Dulwich 3%, Herne Hill & Loughborough 3%, Streatham Hill East 2%, Kennington 2%

ASB lead

Ayo Bankole
ASB manager
Ayo.Bankole-Thomas@southernhousing.org.uk
02080362850

Building Safety (Vacant)

CCTV and Community Safety Lead

Colin Lydon
Head of Community Safety
Colin.lydon@southernhousing.org.uk
02080362813

Estates Services Lead

Derek Sennett
Head of Estate Services
Derek.Sennett@southernhousing.org.uk

Housing Advice Welfare Lead

Ilesha St Hilaire
Financial Inclusion Manager
Ilesha.StHilaire@southernhousing.org.uk
02080362552

Housing Management Neighbourhoods

Sara Weller
Regional Manager
Sara.weller@southernhousing.org.uk
02080362342

Jackie Pauley
Head of Region
Jackie.Pauley@southernhousing.org.uk

Housing Development/Regeneration

Joanne Maunders
Head of Development Delivery
Joanne.maunder@southernhousing.org.uk
02080362271

Partnerships Lead

Diane Blowers
Partnership Manager
Diane.blowers@southernhousing.org.uk
02080362471

Lisa Buckland
Places & Partnerships Manager
buckland@southernhousing.org.uk

Repairs & Maintenance Services

Darren Goodsell
Head of Maintenance – London
Darren.goodsell@southernhousing.org.uk
02080362306

Resident Involvement/Community Investment

Natalie Boyce
Resident Involvement Project Lead
Natalie.boyce@southernhousing.org.uk
02080362384

Victoria Banfield
Resident Involvement Manager
Victoria.banfield@southernhousing.org.uk
0208 036 2508

Main inbox for enquiries

contactus@southernhousing.org.uk

Complaints

contactus@southernhousing.org.uk

Southern Housing Complaints Resolution Policy

For MP enquiries please use
MPEnquiries@southernhousing.org.uk

0800 121 6060

Southern Housing

0800 121 6060

Head office

125 High Street

Croydon

CR0 9XP

<https://www.optivo.org.uk/contact-us.aspx>

Quick Links

[Anti-Social Behaviour](#)

[ASB Policy](#)

[Cost of Living](#)

[Damp Condensation Moisture](#)

[Damp and Mould](#) leaflet

[Report a Repair](#)



Wards Covered

West Dulwich 16%, Waterloo & South Bank 10%, Brixton North 9%, Streatham Hill West & Thornton 7%, Clapham East 5%, Brixton Windrush 5%, Kennington 5%, Brixton Acre Lane 5%

Community Safety & ASB Lead

Kevin James
Kevin.James@peabody.org.uk

Building Safety

Peter Morina
Senior Building Safety Manager
Peter.Morina@peabody.org.uk

Tim McFarlane
Building Safety Manager
Tim.McFarlane@peabody.org.uk

Estates Services Lead

Cynthia Mathurin
Caretaking Services Manager
Cynthia.mathurin@peabody.org.uk

**Housing Management
Neighbourhoods**

Rosh Ahamed
Head of Neighbourhoods, South
roshanarah.ahamed1@peabody.org.uk

Bethanne Glenn
Neighbourhood Area Manager
bethanne.glenn@peabody.org.uk

Matt Coates
Community Safety manager - South
Matthew.Coates1@peabody.org.uk

Housing Development/Regeneration

Chris Lyons
Senior Development Manager
Chris.Lyons@peabody.org.uk

Housing Advice Welfare Lead

Danny Cordiner
Assistant Head Tenant & Family Services
Danny.Cordiner@peabody.org.uk

Partnerships Lead

Pablo Cazar
AD for South Region (South Team)
Pablo.Cazar1@Peabody.org.uk

Repairs & Maintenance Services

Customer Care
Customercareline@peabody.org.uk

Resident Involvement/Community Investment

Anna de Souza
Head of Customer Engagement & Resident
Anna.DeSouza@peabody.org.uk

Sustainability Lead

Nadira Moreea
Nadira.Moreea@peabody.org.uk



Main inbox for enquiries

Customercareline@peabody.org.uk
<https://www.peabody.org.uk/contact-us/contact-peabody/make-an-enquiry>

Members' Enquiries:

[CEOandMPCouncillor.enquiries@peabody.org.uk](https://www.peabody.org.uk/contact-us/contact-peabody/make-an-enquiry)

Complaints

Customercareline@peabody.org.uk

[Peabody Complaints Policy](#)

Contact Number

0300 123 3456

Peabody

South London Hillyard St, Vassal,
London SW9 0NP

<https://www.peabody.org.uk/contact-us>

Quick Links

[Anti-Social Behaviour
ASB Policy](#)
[Building Safety News](#)
[Damp and Mould
Report a Repair](#)
[Resident Handbooks](#)



Wards Covered

Brixton Windrush 60%, Brixton North 20%, Kennington 20%

Building Safety

Gavin Pierson
Director of Building Safety
gavin.pierson@guinness.org.uk
07458079947

Community Safety/ASB Lead

Vicky Weir
Safe Neighbourhoods Manager
Vicky.Weir@guinness.org.uk

Yemi Labaeka
Safer Neighbourhood Officer
Yemi.Labaeka@guinness.org.uk

Estates Services Lead

Rachel Hower
Estate Services Operations Manager
rachel.hower@guinness.org.uk
07738984163

Housing Management Neighbourhoods

Nahide Sevim
Regional Head of Customer Service (London)
Nahide.sevim@guinness.org.uk
0203 288 1942

Housing Development/Regeneration

Helen Dobbs
Senior Regeneration Manager
Helen.dobbs@guinness.org.uk
07710922396

Resident Involvement/Community Investment

Donnella Briden
Customer Experience Manager
donnella.briden@guinness.org.uk
07710922523

Housing Advice Welfare Lead

Kelly Meek
Guinness Partnership
Customer Support Manager
Kelly.Meek@guinness.org.uk

Partnerships Lead

Nahide Sevim
Regional Head of Customer Service (London)
Nahide.sevim@guinness.org.uk
0203 288 1942

Repairs & Maintenance Services

Kathryn Dougall
Regional Head of Service London (Responsive
Repairs & Empty Homes)
Kathryn.Dougall@guinness.org.uk

Sustainability Lead

Cecily Church
Sustainability Manager
Cecily.church@guinness.org.uk



Main inbox for enquiries

Website;
www.guinnesspartnership.com
Use general queries contact form
under the contact us section this will
then be raised with the correct team at
Guinness.

Complaints

complaints@guinness.org.uk

[Guinness Complaints process](#)

Contact

0330 123 1890

The Guinness Partnership

1, Kenwood House, Loughborough Park,
London SW9 8FT

www.guinnesspartnership.com

Quick Links

[Anti-Social Behaviour](#)
[Building Safety](#)
[Cost of Living Support](#)
[Customer Policies](#) (all)
[Damp and Mould Policy](#)
[Report a Repair](#)



Wards Covered

Streatham St Leonards 30%, Kennington 25%, St Martin's 12%, Stockwell West & Larkhall 10%, Gipsy Hill 7%, Streatham Hill East 6%, Waterloo & South Bank 3%, Herne Hill & Loughborough Junction 3%

ASB and Community Safety, Neighbourhoods

Martina Brown
Neighbourhood Customer Service Manager
martinabrown@wandle.com
02086827331

Frank Smith
Community Safety Team Leader
franksmith@wandle.com
0208 682 5383

Building Safety

Ola Akintelure
Head of Asset and Development
OlajideAkintelure@wandle.com
0208 682 7405

Estates Services Lead

Lorraine Chastanet
Estates Services Manager
lorrainechastanet@wandle.com
0208 682 5384

**Housing Development/Regeneration/
Sustainability**

Ola Akintelure
Head of Asset and Development
OlajideAkintelure@wandle.com
0208 682 7405

**Partnership Lead and Housing Management & Housing
Advice Lead**

Maria Ramos
Head of Customer Service Delivery
mariaramos@wandle.com
07973714807

Executive Director of Customer & Operational Services

Francis Burrows
Executive Director, Customer & Operational Services
francisburrows@wandle.com

Repairs & Maintenance Services

Bob Newbigging
Reactive Maintenance
bobnewbigging@wandle.com

Tony Almond

Planned Maintenance.
tonyalmond@wandle.com

Resident Involvement/Community Investment

Gerard Naughton
Head of Business Services
gerardnaughton@wandle.com
0208 682 5327

**Main inbox for enquiries**

customerservices@wandle.com

Members Enquiries

wandlemembersenquiries@wandle.com

Complaints

customerservices@wandle.com

[Wandle Complaint Policy](#)

Wandle

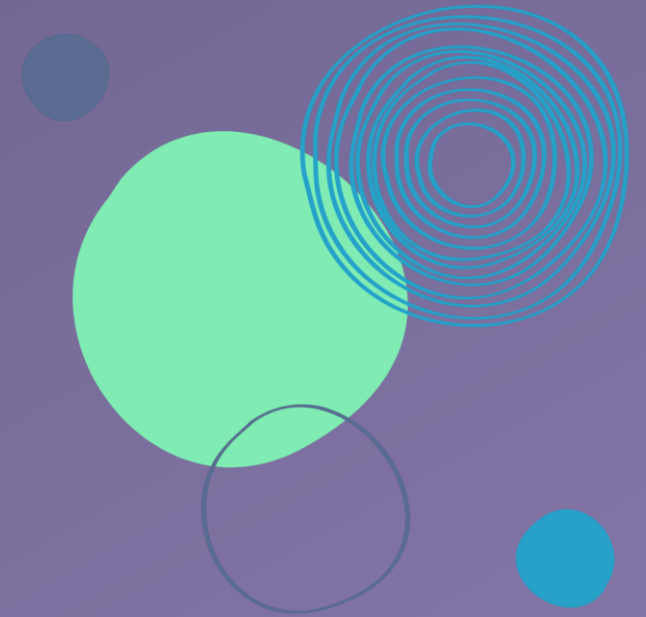
Wandle, Second Floor, 230 Blackfriars
Road, SE1 8NW.

<https://www.wandle.com/contact-us/>

Quick Links

[Anti-Social Behaviour](#)
[Community Pantry](#)
[Customer Policies \(all\)](#)
[Reporting a repair](#)
[Tenant Handbook](#)

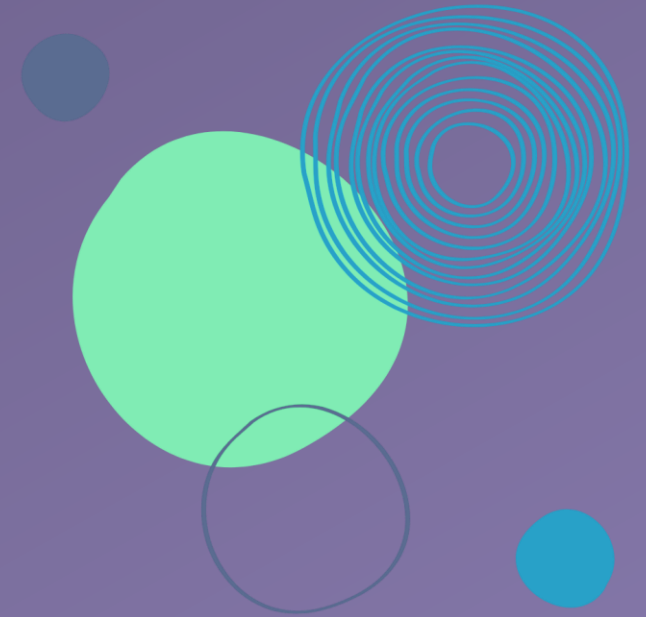
Other Registered Provider Contacts



Other Registered Provider's in Lambeth - Contacts for repairs and complaints

Organisation	Contact details	Further Information	Homes in Lambeth
PA HOUSING (Paragon Asra) www.pahousing.co.uk PA HOUSING, Case House, 85-89 High St, Walton-on-Thames, Surrey, KT12 1DZ	Residents make repairs requests online. https://mypa.pahousing.co.uk/ Email contacts for repairs and complaints housing@pahousing.co.uk repairs@pahousing.co.uk LSERepairComplaintsTeam@pahousing.co.uk	Here are some current contacts in repairs. Ben Lewis, Head of Property Services ben.lewis@pahousing.co.uk Andrew.Rossiter@pahousing.co.uk Michael.McDonagh@pahousing.co.uk maria.woods@pahousing.co.uk	422
WATMOS Community Homes	Residents make repairs requests online. Reporting a Repair WATMOS		1306

Out of Hours and Emergency Contacts



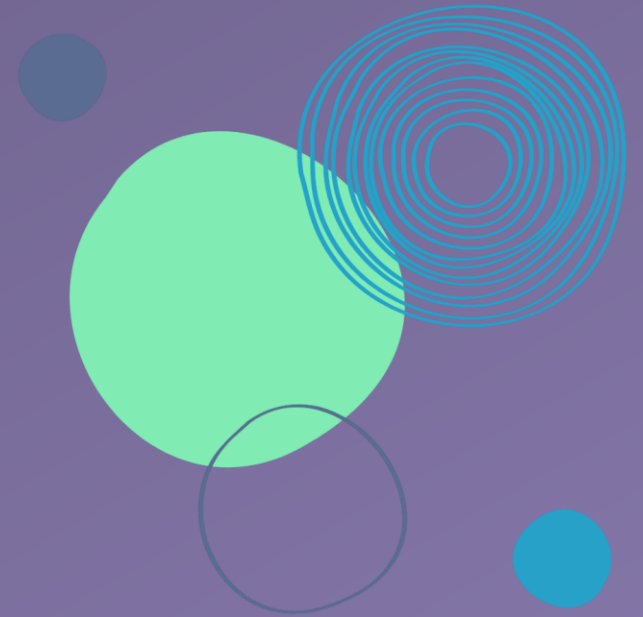
Emergency Contacts – for Registered Providers

Contact	Telephone No	Further Information
Emergency Services	999	In a life-threatening emergency only or if a serious offence is in progress or is being committed
UK Power networks	105	For a power cut call UK Power networks
British Gas Emergency Service	0800 111 999	
Lambeth council's emergency response	020 7926 1000	A housing emergency could relate to a flooded flat, electrical fault, fire or other incident that requires an occupant or multiple occupants to require urgent maintenance to their flat, provision of temporary accommodation, evacuation or the setup of a welfare or rest centre
Report a dangerous building or structure	020 7020 7926 1150 OR 020 7926 1000	To report a dangerous building or structure, Mon to Fri, from 9am to 5pm, at all other times call 020 7926 1000
Lambeth housing management	020 7926 6666	Lambeth housing management for council property enquiries such as emergency housing repairs
Major gas leakage emergencies	020 7926 6669	Lambeth emergency number for major gas leakage
Social care emergencies	020 7926 5555	Social care enquiries for emergencies only

Registered Providers – Out of Hours & Emergency Contacts

RP	Telephone No	Further Information
Notting Hill Genesis	020 8357 5000	This routes to the customer service centre which is staffed 24/7
Southern Housing	0800 121 6060	Out of hours calls are routed to the Duty Manager
Sovereign Network Group/SW9 Community Housing	020 7326 3700	Out of hours calls are routed to the Duty Manager
Metropolitan Thames Valley Housing	020 3535 3535	This routes to the Out of hours service
L&Q	0300 456 9996	Out of hours calls are routed to the Duty Manager
Hyde	0800 328 2282	Out of hours calls are routed to the Duty Manager.
Peabody	0300 123 3456	Call centre is open 8am - 8pm Mon to Fri & 8 - 12 Sat. Calls out of hours will be escalated to the duty Neighbourhoods Area Manager if the situation warrants it
Guinness Partnership	0303 123 1890	Out of hours calls are routed to the Duty Manager
Wandle	0300 2000 130	Out of hours calls are routed to the Duty Manager
Ekaya Housing Association	020 709 11800	Select 2 to be routed to the On Call service

RP Homes and Ward Boundaries in Lambeth



RP Homes and Ward Boundaries



Approx 6830 homes

- Clapham Park 36%
- Brixton Windrush 11%
- Brixton Acre Lane 10%
- St Martin's 9%
- Oval 9%

Homes under 300

- Waterloo & South Bank 4%
- Clapham Town 4%
- Brixton North 3%

1% or less

- Herne Hill & Loughborough Junction
- Clapham Common & Abbeyville
- Stockwell East
- Vauxhall
- West Dulwich
- Brixton Rush Common
- Kennington
- Streatham Common & Vale
- Streatham Wells
- Clapham East
- Knights Hill
- Streatham Hill West & Thornton
- Streatham Hill East
- Streatham St Leonards
- Myatts Field
- Stockwell West and Larkhall



Approx 4311 homes

- Kennington 14%
- Herne Hill & Loughborough Junction 14%
- Brixton Rush Common 12%
- Stockwell West & Larkhall 8%

Homes under 300

- St Martin's 7%
- Knight's Hill 6%
- Stockwell East 5%
- West Dulwich 5%
- Brixton Windrush 4%
- Clapham Town 3%
- Brixton North 3%
- Vauxhall 3%
- Myatt's Field 2%
- Streatham St Leonard's 2%
- Brixton Acre Lane 2%
- Gipsy Hill 2%
- Streatham Common & Vale 2%
- Oval 2%
- Streatham Wells 1%



Approx 3797 homes

- Vauxhall 18%
- Oval 16%
- Brixton North 10%
- Brixton Rush Common 9%
- Waterloo & South Bank 8%

Homes under 200

- St Martin's 5%
- Knight's Hill 5%
- Brixton Acre Lane 4%
- Clapham Town 3%
- Streatham Hill West & Thornton 3%
- Streatham Hill East 3%
- Streatham St Leonards 3%
- Herne Hill & Loughborough Junction 2%
- Stockwell East 2%
- Clapham Park 2%

Less than 1%

Brixton Windrush, Gipsy Hill, Stockwell West & Larkhall, Clapham Common & Abbeyville



Approx 3547 homes

- Stockwell East 38%
- Stockwell West & Larkhall 32%
- Kennington 20%

Homes under 200

- Oval 5%
- Brixton North 2%

Less than 1%

Streatham Common & Vale, Brixton Acre Lane, Waterloo & South Bank, Knight's Hill, Myatt's Field, Gipsy Hill

RP Homes and Ward Boundaries



Approx 3509 homes

- Stockwell & Larkhall 20%
- St Martin's 17%
- Knight's Hill 10%

Homes under 300

- Myatt's Field 8%
- Vauxhall 8%
- Gipsy Hill 7%
- Clapham Town 6%
- Streatham Common & Vale 6%
- Streatham Wells 4%
- West Dulwich 3%
- Herne Hill & Loughborough 3%
- Streatham Hill East 2%
- Kennington 2%

Under 1%

Brixton Windrush, Clapham Park, Streatham Hill West & Thornton, Streatham St Leonard's, Clapham East



Approx 3494 homes

- West Dulwich 16%
- Waterloo & South Bank 10%
- Brixton North 9%
- Streatham Hill West & Thornton 7%
- Clapham East 5%

Homes under 200

- Brixton Windrush 5%
- Kennington 5%
- Brixton Acre Lane 5%



Approx 820 homes

- Brixton Windrush 60%
- Brixton North 20%
- Kennington 20%



Approx 2247 homes

- Brixton 77%
- Brixton Windrush 7%
- Clapham Common & Abbeyville 5%
- Streatham Hill & Thornton 3%
- Clapham Town 3%



Approx 261 homes

- Stockwell West & Larkhall 31%
- Gipsy Hill 11%
- Brixton Rush Common 10%
- Herne Hill & Loughborough Junction 8%
- Brixton Acre Lane 7%
- Clapham Park 7%
- Knight's Hill 7%
- Oval 6%

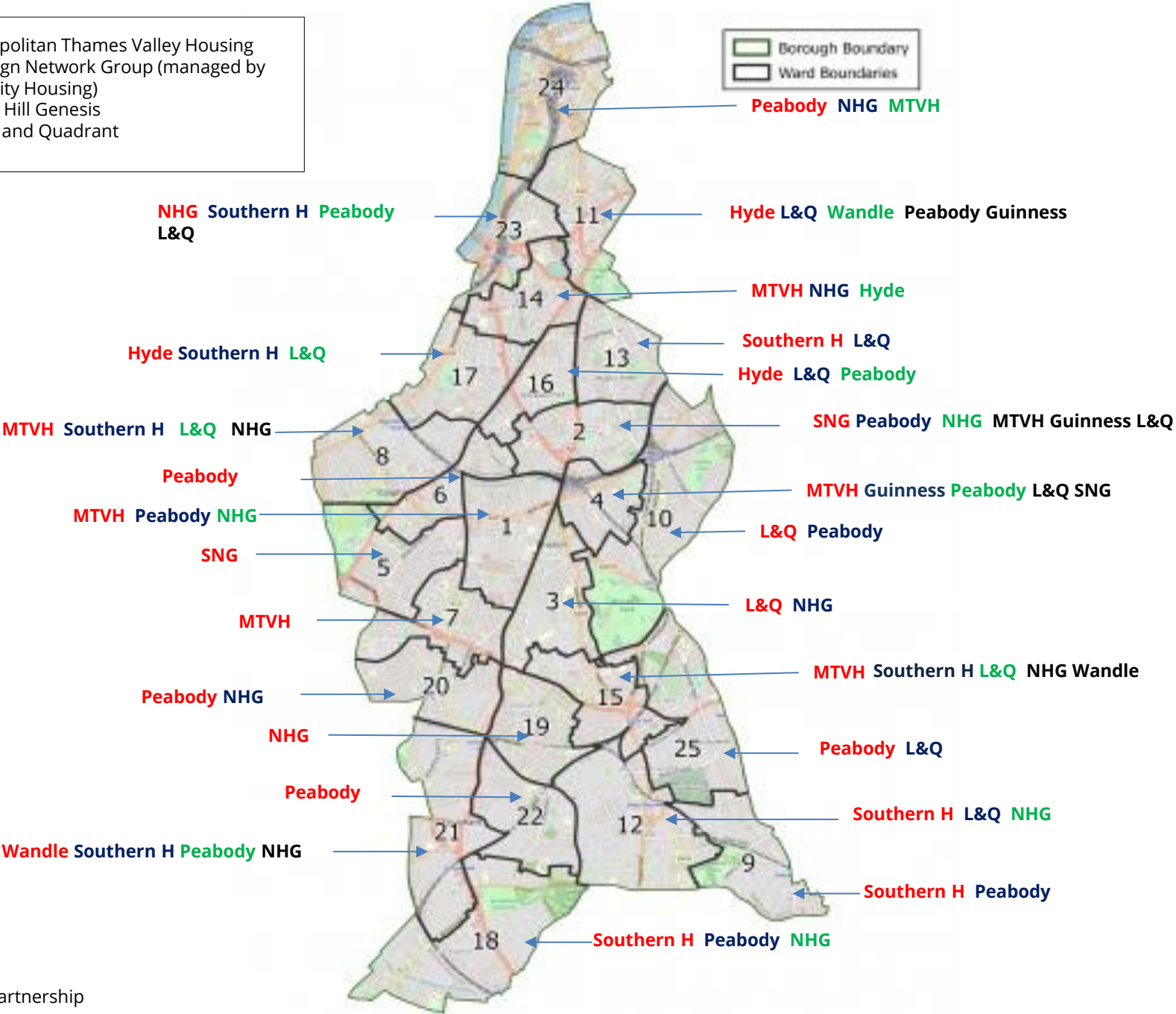


Approx 560 homes

- Streatham St Leonards 30%
- Kennington 25%
- St Martin's 12%
- Stockwell West & Larkhall 10%
- Gipsy Hill 7%
- Streatham Hill East 6%
- Waterloo & South Bank 3%
- Herne Hill & Loughborough Junction 3%

Top Registered Providers by ward level

MTVH - Metropolitan Thames Valley Housing
SNG - Sovereign Network Group (managed by SW9 Community Housing)
NHG - Notting Hill Genesis
L&Q - London and Quadrant



Map number ref:	Ward Name
1	Brixton Acre Lane
2	Brixton North
3	Brixton Rush Common
4	Brixton Windrush
5	Clapham Common & Abbeville
6	Clapham East
7	Clapham Park
8	Clapham Town
9	Gipsy Hill
10	Herne Hill & Loughborough Junction
11	Kennington
12	Knight's Hill
13	Myatt's Fields
14	Oval
15	St Martin's
16	Stockwell East
17	Stockwell West & Larkhall
18	Streatham Common & Vale
19	Streatham Hill East
20	Streatham Hill West & Thornton
21	Streatham St Leonard's
22	Streatham Wells
23	Vauxhall
24	Waterloo & South Bank
25	West Dulwich

1st Highest RP
2nd Highest RP
3rd Highest RP

Other RPs with high concentration of homes
(All over 100 homes)

Useful Links

LHP Partners Website

Ekaya <http://www.ekaya.co.uk/>

Hyde <https://www.hyde-housing.co.uk/>

L&Q <https://www.lqgroup.org.uk/>

MTVH <https://www.mtvh.co.uk/>

Notting Hill Genesis <https://www.nhg.org.uk/>

Southern Housing <https://www.southernhousing.org.uk/>

SW9 Community Homes (Sovereign Network Group) <https://www.sw9.org.uk/>

Sovereign Network Group <https://www.sng.org.uk/>

Peabody <https://www.peabody.org.uk/>

The Guinness Partnership <https://www.guinnesspartnership.com/>

Wandle <https://www.wandle.com/>

Housing Associations in Lambeth [link here](#)

LHP Annual Review 2023-24 [link here](#)

LHP Annual Review 2022-23 [link here](#)

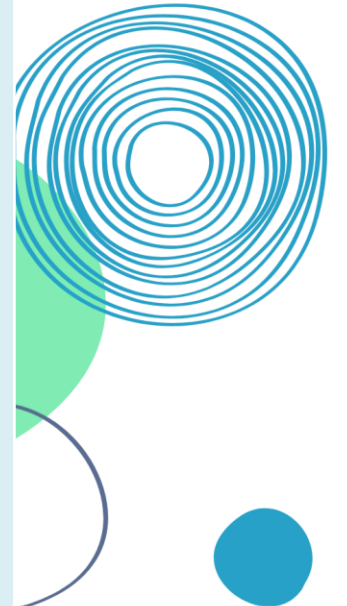
LHP Annual Review 2021-22 [link here](#)

Housing Ombudsman <https://www.housing-ombudsman.org.uk/>

Regulator of Social Housing <https://www.gov.uk/government/organisations/regulator-of-social-housing>

G15 Housing Associations <https://g15.london/>

National Housing Federation <https://www.housing.org.uk/>



Summary of Changes to the Directory

Feb Edition 2025

- Olutayo Adesegun 'Housing Service Manager at Ekaya added
- Natalie Nye 'Head of Tenancy and ASB Services' at Hyde housing added
- Matt Coates 'Community Safety manager – South' at Peabody added
- Lisa Buckland 'Places & Community Partnerships Manager' at Southern Housing added

Jan Edition 2025

Staffing updates from Hyde:

- Craig Kendall, ASB Team Leader added
- Benjamin Bello, Head of Services has left
- Nichette Cielto, Tenancy officer has left
- Nic Haig, ASB & Tenancy Operations Manager has left
- Guy Slocombe, Chief investment officer will be leaving to join Sovereign Network Group in February 2025

Dec Edition 2024

- Shaheen Mahtabuddin, Interim Director of Operations has left Ekaya
- Domestic Abuse Lead, Lisa Gallagher no longer works for Southern Housing
- Tom Lawrence, Contract Manager for Serco added, as Kelly Williams has left Lambeth Council

Staffing updates from Hyde:

- Liz Oliver, Safer Homes & Neighbourhoods Director role updated
- Julie Costley, Communities Programme Manager role updated
- Katie Ford is the best contact for welfare/ housing advice services
- Steve Austin, Head of Property Maintenance added
- Anna Grant, Sustainability Lead/ Head of Asset Management added
- Luca Nania, Lead Customer Researcher added