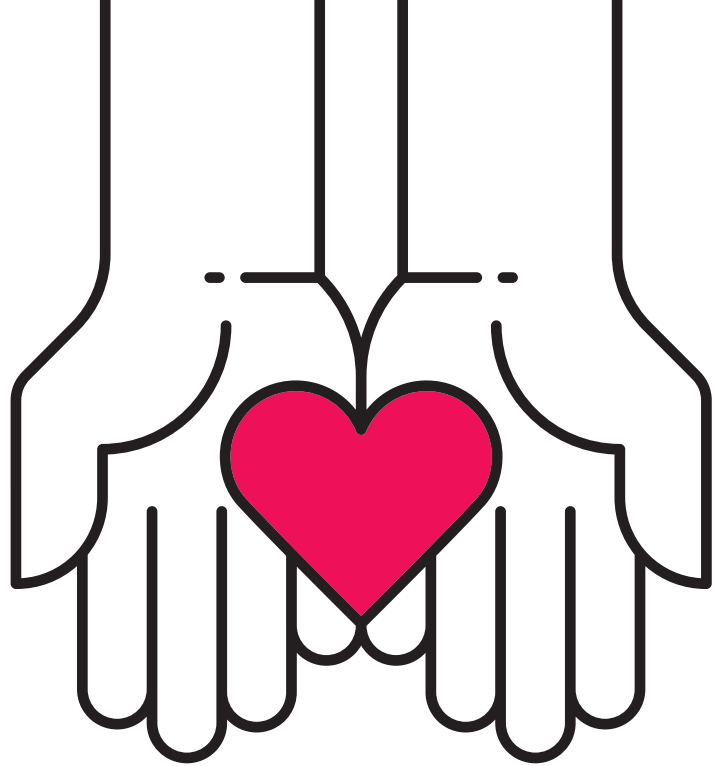


# Cost of living support available now



**Lambeth Council and local charities are here to help during the cost of living crisis.**

For further information  
visit our website  
**[lambeth.gov.uk/  
costofliving](https://www.lambeth.gov.uk/costofliving)**



## **We can help you with:**

- Council tax support and rebates
- Access to benefits and grants
- Making your home energy efficient, reducing your bills
- Access to Foodbanks and low-cost food
- Emergency Support Scheme - support for residents in an emergency, crisis or disaster
- Job and business start-up support
- Holiday activities

## **Emergency Support**

The Emergency Support Scheme helps Lambeth Residents that are facing hardship, a crisis, emergency, or disaster. This includes struggling to pay bills or afford food.

We can help with vouchers for food or High Street shops, fuel payments, handyman services and removals, along with physical goods such as refurbished white goods and second-hand furniture.

Visit [www.lambeth.gov.uk/ESS](https://www.lambeth.gov.uk/ESS)  
for more information

## You can also get independent advice from:

### Citizens Advice Merton and Lambeth (CAML)

Telephone: Lambeth Adviceline 0800 254 0298  
[www.caml.org.uk](http://www.caml.org.uk)

### Brixton Advice Centre

Telephone: 020 7095 5908  
 Monday to Thursday 10am – 3pm  
[www.brixtonadvice.org.uk](http://www.brixtonadvice.org.uk)

### Centre 70 (C70)

Telephone: 020 8670 0070  
 Monday to Friday 10am – 4pm  
 Email: [enquiries@centre70.org.uk](mailto:enquiries@centre70.org.uk)  
[www.centre70.org.uk](http://www.centre70.org.uk)

### Groundwork

The Green Doctors offer free, impartial advice and support to help you save energy, reduce your bills, and live in a warmer, more comfortable home. Telephone: 03003 653 005 [www.groundwork.org.uk](http://www.groundwork.org.uk)

## Food Support:

**The Lambeth Larder** website has useful information about where to find local help and support, including emergency support. Visit [www.lambethlarder.org](http://www.lambethlarder.org) or email them on [info@lambethlarder.org](mailto:info@lambethlarder.org)

**Trussell Trust foodbanks** provide a minimum of three days' nutritional, non-perishable food.

You can find more information on [www.trusselltrust.org/get-help/find-a-foodbank/](http://www.trusselltrust.org/get-help/find-a-foodbank/)

## Pension Credit:

Pension Credit is a payment to top up your income, which you can apply for when you reach state pension age. How much you could get depends on the value of your current state pension, other income, and any savings you may have.

Check if you are eligible on [www.gov.uk/pension-credit](http://www.gov.uk/pension-credit) or call the Pension Credit claim line on 0800 99 1234.

You will need the following information ready:

- Your National Insurance number
- Information about your income, savings and investments
- Your bank account details

## Free School Meals:

Even though all primary school children will receive free school meals in the 2023/24 school year, if you are in receipt of income-related benefit, council tax support or discretionary housing payments you should still apply for free school meals through your school. This ensures you will have access to additional support during the school holidays, including Holiday Activities and Food programme and additional financial support (£20 per child, per week, distributed by schools).

## At a glance look at what you might have received and might be entitled to:

