



CENTRE for
SUSTAINABLE
HEALTHCARE
inspire + empower + transform

**HEALTHIER
PLANET
HEALTHIER
PEOPLE**



Asset Upgrade and Decarbonisation Project

Barry Nealon

Rye, Winchelsea & District Memorial Hospital Ltd

Our People
Our Planet

Quality improvement for greener
healthcare and wellbeing

Memorial Care Centre Site



- 1 Proposed new Community Centre
- 2 The Rye, Winchelsea & District Memorial Hospital
- 3 St. Bartholomew's Court
- 4 Rye Medical Centre
- 5 Proposed new Care Home
- 6 Electrical Sub-Station
- 7 Current NHS Ambulance Station
- 8 Proposed Access to the new Care Home
- 9 Main Access from Rye Road

**Our People
Our Planet**



CENTRE for
SUSTAINABLE
HEALTHCARE
inspire + empower + transform

**HEALTHIER
PLANET
HEALTHIER
PEOPLE**

The Old Hospital



Our People
Our Planet



CENTRE for
SUSTAINABLE
HEALTHCARE
inspire + empower + transform

HEALTHIER
PLANET
HEALTHIER
PEOPLE

Community campaign to raise funds for the new Hospital



Our People
Our Planet



CENTRE for
SUSTAINABLE
HEALTHCARE
inspire + empower + transform

HEALTHIER
PLANET
HEALTHIER
PEOPLE

The Current Hospital built in 1994



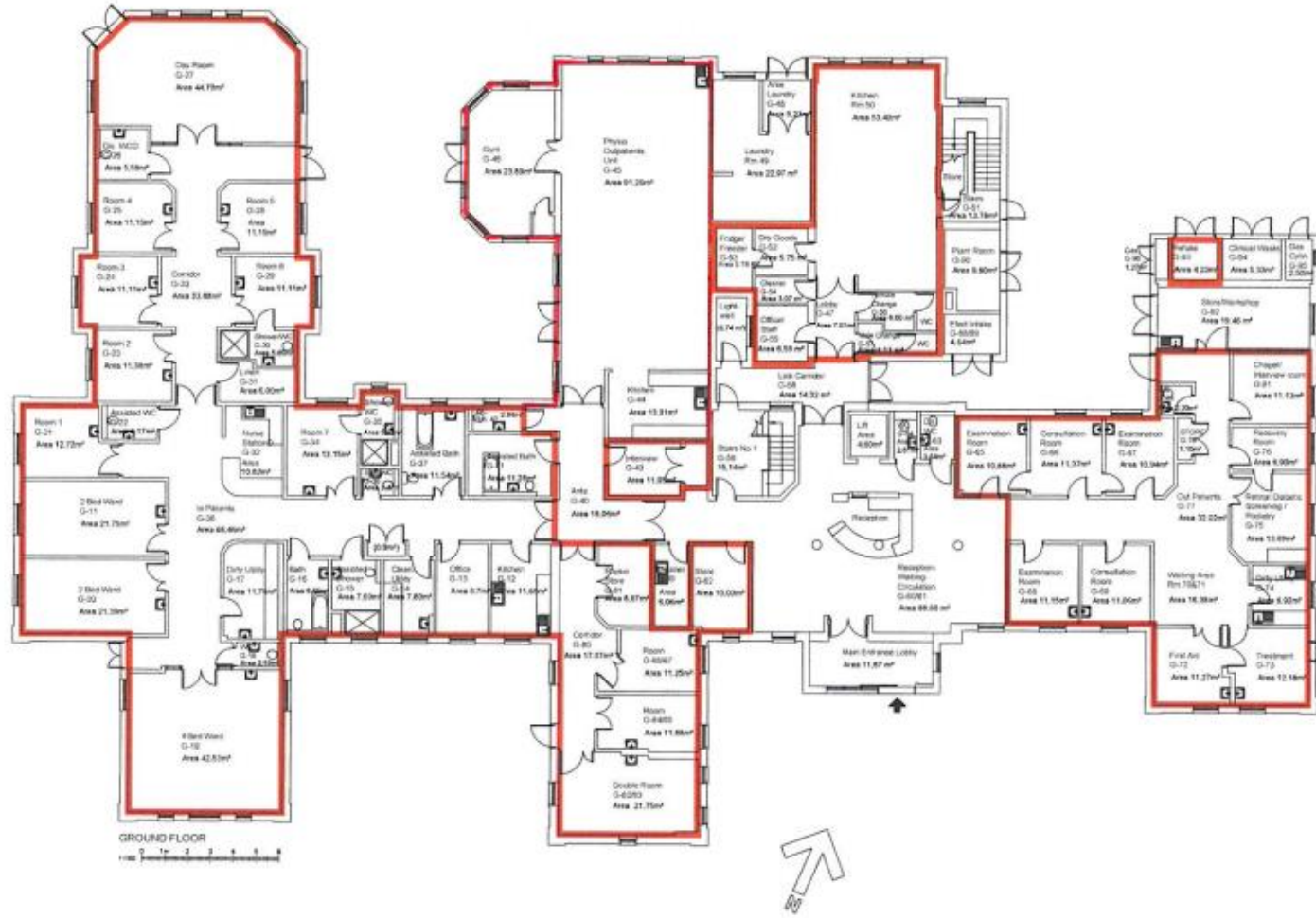
Our People
Our Planet



CENTRE for
SUSTAINABLE
HEALTHCARE
inspire + empower + transform

HEALTHIER
PLANET
HEALTHIER
PEOPLE

The Hospital Floor Plan



Our People
Our Planet



CENTRE for
SUSTAINABLE
HEALTHCARE
inspire + empower + transform

HEALTHIER
PLANET
HEALTHIER
PEOPLE

The Need For Renewal

- Nearly 30 years old
- Increase in plant failure
- Condition survey carried out in March 2021
- Identification of asset upgrade requirements
- Board requirement for a Green Agenda
- £700,000 budget
- Energy Services team of DMA Group commissioned to deliver project in September 2021

 **Our People**
Our Planet



CENTRE for
SUSTAINABLE
HEALTHCARE
inspire + empower + transform



The Main Elements of Decarbonisation



- Installation of solar panels on the hospital roof
- Installation of a solar battery storage system to capture all surplus electricity generated by the solar panels
- Replacing the gas boilers and gas kitchen equipment
- Installation of a Building Management System to allow remote control



Outcomes



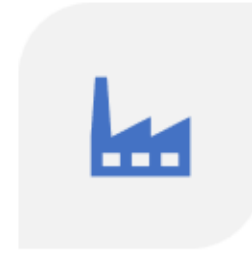
COMPLETED ON
BUDGET



GENERATION OF
IN EXCESS OF
70,000KWH OF
SOLAR
ELECTRICITY



OVERALL
REDUCTION IN
ENERGY
CONSUMPTION
APPROXIMATELY
240,000KWH PER
ANNUM



REDUCTION IN
CARBON OF
CIRCA 260
TONNES PER
ANNUM



ELIMINATION OF
USE OF ALL
FOSSIL FUELS

Our People
Our Planet



CENTRE for
SUSTAINABLE
HEALTHCARE
inspire + empower + transform

**HEALTHIER
PLANET
HEALTHIER
PEOPLE**

Lessons Learned and Challenges Experienced

- Take a long term view
- Short term utility savings are not significant
- Check the power generation of your utility provider
- Be aware of constantly changing technology
- Work closely with the NHS hospital team
- Manage equipment delivery times