

West London CAMHS Presents:

# **MENTAL HEALTH AND WELLBEING FAIR**

Brentford FC Community Stadium Hub  
21st September 2024 | 11am - 3pm

This **FREE** event is ran by **NHS Children and Adolescent Mental Health Service (CAMHS)** and will be open to young people and their families who live throughout West London.

**Purpose of the event:** to inform families about mental health support throughout West London. We will be providing information about CAMHS including what the different teams and disciplines offer. Alongside this, there will be:

- Mental health organisations and charities who will be hosting stalls
- Various child-friendly activities and workshops
- A panel where our CAMHS Youth Ambassador will be hosting a conversation with prominent mental health advocates
- For the first 50 families, there will be a free tote bag to pick up which includes stickers, stress balls and more!

We hope you're able to save the date - see you in September!



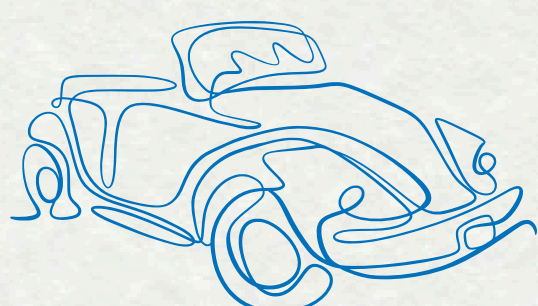
 @instacamhswl

# GETTING HERE

## Brentford FC Community Stadium Hub

Brentford FC Community Sports Trust  
1A Thomas Layton Way  
Underwood House  
Brentford  
TW8 0SB.

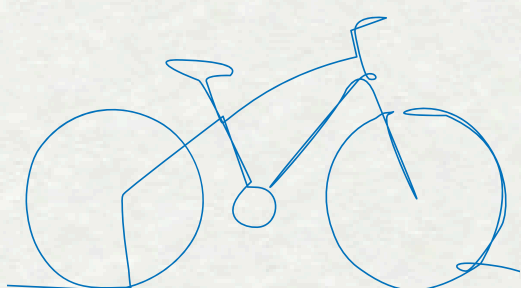
What Three Words: ///audit.purely.youth



### By car

Please note: Parking at the Community Stadium Hub is extremely limited and only have accessible parking spots at the request of the stadium. For any accessible parking contact:  
[eventspace@brentfordfcst.com](mailto:eventspace@brentfordfcst.com)

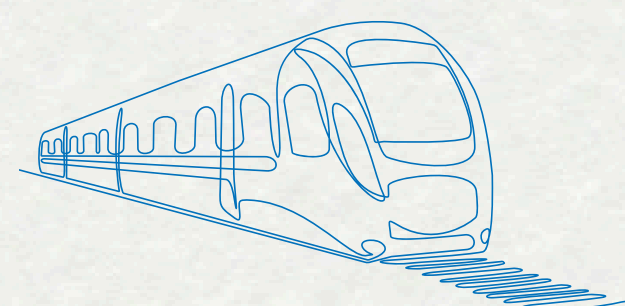
For offsite parking please contact:  
[service.userinvolvement@westlondon.nhs.uk](mailto:service.userinvolvement@westlondon.nhs.uk).



### By Bike

We love to welcome cyclists to our Venue. There are bicycle racks on Thomas Layton way. Bikes left outside our gates are left at your own risk.

We do not allow bicycles, tricycles, roller skates, skateboards, and scooters into the Venue.



### By Train

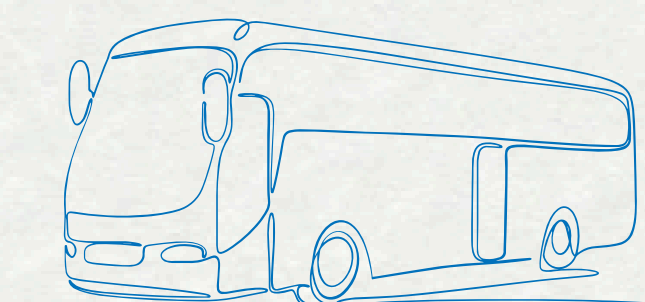
**Kew Bridge Station** is 320m from the venue. South West Trains run services from Waterloo, via Vauxhall and Clapham Junction. There is no level access at Kew Bridge.

**Richmond Station** has lift and level access. Take 65 bus (in the direction of Ealing Broadway) to Kew Bridge. Walking time from Kew Bridge Station is 5 minutes to the venue.

### By Tube

**Gunnery Station** is 965m from the venue. It is served by the District Line and London Overground. There is no level access from the southbound or northbound platforms. It is possible to continue to Richmond and catch a tube back one to use the eastbound platform which does have level access.

**Ealing Broadway Station** connects to bus route 65, stopping at Kew Bridge Station.



### By Bus

**Route 65** (Ealing Broadway/Kingston) stops at Kew Bridge station.

**Route 110** (Hammersmith/Hounslow) stops at Kew Bridge station.