



Short Breaks for Disabled Children

Newsletter
Winter 2023



London Borough
of Hounslow

FREE Winter holiday
Short Breaks inside!



Welcome

Welcome to the Winter newsletter! You will find inside a programme of activities taking place over the holiday and into the winter months which will be fun and enjoyable for your young person and the whole family.

We wish you all a happy holiday and a Happy New Year!

Jo Dawson and Collin Hazeley, Short Breaks

What is a Short Break?

Short breaks provide opportunities for disabled children and young people to spend time away from their primary carers. They aim to provide parents and carers a necessary and valuable break away from their caring responsibilities in order to recharge their batteries.

They enable disabled children and young people to have the chance to develop new friendships, take part in new experiences and to have fun doing positive activities like sports, music therapy, youth clubs and much more.

A short break may include a few hours, a day, evening, overnight stay, weekend or sometimes longer. It could take place in the family home, at another home or out in the wider community.

Hounslow Short Breaks team also endeavour to provide short breaks for the whole family in an environment that is sympathetic to the disabled child or young person, for example, theatre shows and cinema screenings.



For more information, please see our Short Breaks Statement on the Hounslow website – www.hounslow.gov.uk/shortbreaks under 'Downloads'.

If you have any queries, please do call the Short Breaks team on 020 8583 3636.

Unique Identifying Number (UIN)

If you have not already registered for your UIN, please do call the Short Breaks team on 020 8583 3636. It is important that you do this as you will need a UIN to book onto any of the Short Breaks programme. All our Short Breaks providers (Hounslow Play team, Brentford Sports, Feltham Bees, Richmond Music Trust, Watermans, Griffin Park Learning Zone, Park Lane Stables) will require the UIN as part of the booking process.

Please note that we are unable to do any registrations during booking days.



SHORT BREAKS BOOKING PROCEDURE – please read

This newsletter has been sent to families on Wednesday 29 November and families will be able to book Short Breaks as from the week commencing 4 December. No bookings will take place before Tuesday 5 December.

Tuesday 5 December	Pathway	3
Wednesday 6 December	Pathway	3
Thursday 7 December	Pathways	2 3
Friday 8 December	Pathways	2 3
Monday 11 December	Pathways	1 2 3
Tuesday 12 December	Pathways	1 2 3

If you have any questions or are unsure which pathway your child meets, please do not hesitate to contact the Short Breaks Team on 020 8583 3636. **Please note that we are unable to do any registrations during these booking days.**

Hounslow Parent Carers Forum

Hounslow Parent Carers Forum is part of a nationwide organisation that helps parent and carers of children with Special Educational Needs and Disabilities (SEND). We are there to listen to you and try to support you to get help where needed. We also discuss common issues that parent/carers have with the local authority and other organisations in order to help improve services. All of us who work for the forum have children with SEND.

We have a **Forum** once a month where we ask people from the Council and other organisations or charities to come and chat to us about the service they provide and that gives you the opportunity to ask them questions also. We are considering evening meetings for those that work.

Dates for up-coming Forum meetings are as follows:

- **Tuesday 5 December**
- **Tuesday 23 January**
- **Tuesday 20 February**
- **Tuesday 19 March**

Time: 10.30am-12.30am

Venue: Hounslow Youth Centre
Kingsley Road, Hounslow, Middx TW3 1QA

Email: info@hounslowpcf.co.uk
Tel: 020 8570 4671



Taxicards



This scheme allows London residents with a mobility impairment which prevents them from using buses or trains to travel in contracted licensed radio taxis – black cabs or private hire vehicles at subsidised rates. For further information, please call 020 7934 9791 or visit www.taxicard.org.uk

SUPPORT

If your child or young person needs help to access short breaks, support is available!

Please do call the **Short Breaks team** on **020 8583 3636**.



Useful websites for families of disabled children

Please find below several websites that offer help and support in various ways to families with disabled children:

<http://newlifecharity.co.uk/docs/care-services/Play-Therapy-Pods.shtml>

<https://www.disability-grants.org/grants-for-children.html>

<https://www.turn2us.org.uk/>

Decisions R Us

Bid for up to £250 for a short break or activity!!



Please note that applications to Decisions R Us can be made every other financial year. So, for example if you apply in this financial year, ie. From 1 April 2023 to 31 March 2024, you will have to wait until after 1 April 2025 to apply again. If you have a difficulty or would like to discuss this further, please call on 020 8583 3636.

Last year young people in Hounslow were given the opportunity to apply for funding for their own 'personalised' short break activity. These included horse riding, swimming lessons, gymnastic classes, even rock climbing...

Once again, funds have been allocated to young people on pathway 1 and 2, aged 5 up to 18, living in Hounslow who are looking for help with a short break or activity. This can include equipment that will help them access a short break! Young people and parent/carers on their behalf can bid for up to £250 to fund their own short breaks.

The activity needs to be positive and enjoyable, that gets the young person out and about in the community, hopefully developing a hobby or a skill. We are very flexible in what can be applied for as each child has their own interests but there are some no-nos:

- No electronic equipment including laptops, mobiles, gaming consoles
- No furniture or household items
- The only holiday that could be funded would be one for the young person themselves such as a PGL holiday or a residential with a youth club.
- No Merlin annual passes

The application form is available from the Short Breaks team or from the downloadable documents on the Short Breaks web page www.hounslow.gov.uk/shortbreaks which ideally the young person will then need to complete (where possible) or with help from an adult. Young people can attach a picture, film, photo or other media to the application form if required to express or support their idea. Applications will be then presented to a panel made up of young people, councillors and senior management from the Council who will make a decision about individual applications.

Decisions R Us Panel Dates

10 January 2024 – deadline for applications
Friday 5 January

If you have any queries, please call the Short Breaks team on 020 8583 3636.



Special Educational Needs and Disability Information, Advice and Support Service (SEND IASS)

What Is SEND IASS?

Under the Children and Families Act (2014) it is a legal requirement that all Local Authorities have a Special Educational Needs and Disabilities Information Advice and Support Service (SENDIASS).

The Hounslow Special Educational Needs and Disabilities Information Advice and Support Service (SENDIASS) provides this service for parents and carers of children and young people with special educational needs and disabilities (SEND) in the borough.

This service is also offered directly to young people as well. While the service is funded by the London Borough of Hounslow (LBH), Hounslow SENDIASS works independently of the local authority.

Hounslow SENDIASS is free to use, impartial and confidential.



What we do

Hounslow SENDIASS provides independent and impartial advice based on the law and government guidance. We are able to:

- Meet with you virtually or in person to discuss your concerns or needs. Communication may also be by phone and email
- Explain how the SEND system works – for instance, accessing Education, Health, and Care (EHC) plans
- Assist you in navigating the often-complex world of SEND
- Signpost you to appropriate local authority services, including the Local Offer
- Support you through dispute resolution and mediation processes with schools and the local authority

(NB. Where you request support at a meeting, this is subject to appropriateness, availability, and capacity)



What we don't do

Our aim is to empower young people, parents, and carers to take informed decisions around SEND for themselves. We don't however:

- Tell you what is best for you and your child
- Tell other professionals what to do
- Identify appropriate schools for your child
- Represent you at meetings, including mediation and tribunals
- Assist in the preparation of EHC or tribunal documentation
- Provide an administrative service for you, including contacting or arranging meetings for you with other professionals and form-filling
- Help with benefit claims, housing difficulties, Blue Badges etc

(NB. If your child has an EHC plan, your first contact should be your child's EHC caseworker)



You can help us by:

- Leaving a message when you phone as we do not respond to missed calls where no message has been left (We aim to respond to all enquires within 5 working days)
- Keep us updated on progress in relation to the resolution of your concerns or needs
- Let us know when your issues have been resolved

Data Protection

All the information that Hounslow SENDIASS gathers from you is securely stored electronically and separate to local authority departments. Information will only be shared with your permission. However, where there may be a safeguarding concern Hounslow SENDIASS is obliged to share such concerns with appropriate professionals.

How to access our service

We are a self-refer service. Parents are able to access us directly. We are unable to take referrals from professionals.

If you would like our help, please telephone us on 020 8583 2607 or email us at sendiass@hounslow.gov.uk

Disability Access Fund (DAF)

DAF is available to support children with special educational needs and disabilities (SEND) in their childcare setting. Childcare providers can receive £615 per year for every child who meets the eligibility criteria.

Who is eligible?

To be eligible children must be:

- aged 3 or 4 years old
- using a funded free early education and childcare place in a registered childcare setting
- in receipt of Disability Living Allowance (DLA)*



What can the funding be used for?

The funding is available to help childcare providers make reasonable adjustments at their setting to improve children's access to funded early education. It will be paid directly to the childcare provider and they will be able to decide how it should be spent. The funding cannot be used towards childcare fees.

Your child does not need to be using all of their funded early education and childcare hours for their childcare provider to be able to receive the full £615 of funding. Please speak to your childcare provider if you think your child may qualify.

Further information on DAF can be found on the Hounslow Local Offer through the following link:

www.hounslowlocaloffer.uk

* Many parents miss out on this vital benefit - did you know that you don't have to wait for a condition to be diagnosed before you can claim DLA for your child?. You can claim DLA so long as it is clear that there is some underlying condition - whether physical, mental or behavioural - as a result of which your child needs extra care or help in getting around.

For more information, visit www.gov.uk/disability-living-allowance-children

Eligibility Criteria

You will see the table which describes the pathways of need overleaf, on pages 10-11. Below, we have explained how to assess your child's needs in relation to the pathways.

Step 1: Have a look at Band A and see where your child's disability sits in each pathway.

Step 2: Have a look at Bands B and C if they apply. Think about the four dimensions – Communication, Personal Care, Safety and Supervision, Behaviour and Social Integration. If your child meets one or more of the descriptions in either Band B and C, then they are likely to meet the respective pathway.

If you are unsure or if you see that they sit in multiple pathways, please do give the Short Breaks team a call and we will go through it with you on 020 8583 3636.

Things to think about:

Pathway 1: The child will most likely attend a mainstream school and can access most mainstream activities with minimal support.

Pathway 2: The child will either attend a mainstream school (with specialist support) or attend a specialist school and will need some additional support to access short breaks. They may have a Statement of Special Educational Need or an Education, Health and Care Plan.

Pathway 3: The child will most likely attend a specialist school and require specialist support to access short breaks. They will most likely have a Statement of Special Educational Need or an Education, Health and Care Plan. They will most likely be known to the Social Work team for Children with Disabilities.

The pathway for the child or young person may change at different times throughout their lives as their needs may change.

Pathways of Need

	Dimension	Pathway 1 Level of Need	Pathway 2 Level of Need	Pathway 3 Level of Need
Band A	Mobility	Able to walk unassisted, but with difficulty or poor co-ordination.	Walks, but only with aids or assistance. May use a wheelchair sometimes.	Full time wheelchair user and/or Mobility severely restricted without special provision.
	Vision	Severe or profound problem with one eye. Less than half visual field loss. Able to function independently.	Able to read print with simple aids or assistance. Defect of at least half visual field. May be eligible for registration as partially sighted.	Unable to read large print without intensive educational assistance or sophisticated aids. Registered.
	Hearing	Severe or profound hearing loss in one ear. Hearing loss 20-40 dB	Hearing loss 41-70 dB	Hearing loss >71 dB
	Functioning and Learning ability	Overall functioning slightly below expected level for age. May have a mild or moderate learning disability	Overall functioning around half expected level for age. Has a moderate learning disability	Overall functions significantly below expected level for age. Have a severe learning disability or a moderate learning disability and diagnosed ASD.
	Health	Known health condition, which is under control but occasionally interferes with everyday activities in a minor way.	Health condition that limits normal activities, including self-care and personal hygiene, access to services. May interfere with opportunities for development or education.	Diagnosed health condition, which is severe and potentially life threatening, and results in frequent hospital admissions that limits accessing developmental or educational activities. May be in receipt of Continuing Care or palliative care from Health Services.

IMPACT OF DISABILITY

Band B	Communication	Delayed language development only.	Delayed/ disorganised verbal communication causing difficulty. Speech supplemented by alternate communication method.	Uses communication other than words, e.g. symbols, makaton, BSL.
	Personal care	Child requires minimal support beyond that of their peers with everyday care needs; this will include toileting, washing and dressing.	Child requires practical support beyond that of their peers with everyday care needs; this will include toileting, washing and dressing.	Child requires assistance beyond that of their peers with all everyday care needs; this will include toileting, washing and dressing and can be problematic and need skilled intervention.
	Safety and Supervision	Requires occasional supervision beyond that expected for their age. Poor sense of danger or risk of excitability.	Needs supervision to perform daily activities significantly greater than that expected for developmental age. Limited perception of danger to self or others.	Needs constant supervision during the day and night. Would place themselves or others at risk without supervision.
	Behaviour and Social Integration	Some mild, transient or frequent behaviour difficulties. Able to use local non-specialist universal services. Able to sustain limited peer relationships and social integration with support. Child requires support to access services.	Behaviour problems severe or frequent enough to require some specialist advice or provision. Significant support required to achieve social integration. Only able to sustain peer relationships with support. Child requires services to prevent or alleviate stress in the family.	Long-term behaviour difficulties make it difficult for the child to function appropriately most of the time, and maybe of risk to the child or carers without special provision. Dependence upon carer for social integration. Limited awareness of impact of behaviour upon others. Services required to prevent high risk of accommodation for the child.

Children and young people should meet at least one of the dimensions in Band A and one from Band B to meet the criteria for that pathway. To discuss your child's pathway, please call the Short Breaks team on 020 8583 3636.

Winter 2023 activities

Key to services

Throughout the following pages, we have used symbols to help abbreviate information about the Pathway, referral route, age and level of supervision for individual services.

The symbols are as follows:

Pathways



The Pathway, will always be 1, 2 or 3 or a combination.

Referral route



Self referral



Referral by professional

The referral route is either via self referral or referral by a professional who knows the child/young person, e.g. social worker, teacher, health professional.

Age

5–18

Age is simply given as a range of numbers.

Supervision



Parent supervision required



No supervision required

These symbols indicate whether supervision is required or if a child can attend a service on their own. Both symbols may appear if you need to speak to the provider about this.

Brentford Sports



Community Sports Trust

New Year Multi Sports

Including sports such as dodgeball, badminton, table tennis, basketball, and adapted sports such as boccia and indoor curling.



Tuesday 2 January
10am – 12pm

Location: **Springwest Academy**
(indoor sports hall), Browells Lane,
Feltham, TW13 7EF

For more information or to book a space, please contact Chris Tribe on ctribe@brentfordfcst.com or 07561 605507



Watermans



In order to book a place at any of the Watermans activities, you will need a promo code as well as your child's UIN, which will be emailed to you by the Short Breaks team before the bookings open. If you need a wheelchair space, please call the box office and they will make sure you have the best space and all your group can sit together.

For Watermans booking information, please see page 15.

Come to the Short Breaks Christmas Party!

Friday 22 December, 1 – 4pm

Come and join the Short Breaks Christmas Party, the annual festive favourite! Meet the Snow Queen and see Watermans' fantastic Christmas show, all wrapped up with festive party food and lots of fabulous balloons!

Come along at 1pm and grab some food!

At 2pm, you can see **The Pixie and the Pudding** in the theatre. Suitable for anyone over 3 and great for all the family!

It's Christmas Eve on the farm, and all the animals are fast asleep. Inside the farmhouse, the fire is roaring and a delicious, steaming pudding is left out on the windowsill...



When Charlie and her dad move to the farm from the city, everything seems to go wrong. Dolly the cow's in a grump, there's not an egg to be found, and even the cockerel has stopped crowing! If only they'd paid attention to the mysterious note left on their windowsill about a curious pixie and the pudding she likes to eat on Christmas Eve...

This enchanting musical brings a tale from Scandinavian folklore to life with puppetry, original music and a sprinkling of pixie magic!

Before and after the Christmas show, meet the beautiful Snow Queen, encapsulated in her winter wonderland, all inside a giant living Snow Globe.



And don't forget to see Short Breaks' favourite, Dali Ballooni, who will make you a very special Christmas balloon to take home and keep!



As always, there will be a quiet space in the Cinema – this year, showing the original short film of



Raymond Briggs' The Snowman. This will be running on the big screen all afternoon, with quiet sound and low lighting. Feel free to come and go as you like.

Winter 2023 activities

watermans

Short Breaks Film Club

Come and see some of the most popular new films on at the Cinema in the weekly Short Breaks Film Club in the New Year!

Families can book up to two films.

TROLLS BAND TOGETHER (U)

Thursday 28 December & Sunday 7 January 2024 at 1.30 pm (finishes at 3.05 pm)

Get ready for an action-packed, rainbow-coloured family reunion like no other!



Poppy and Branch are now officially, finally, a couple. Poppy soon learns that Branch has a secret past being part of her favourite boyband, BroZone, along with his four brothers, Floyd, John Dory, Spruce and Clay. When Floyd is kidnapped by a pair of nefarious pop-star villains, Branch and Poppy embark on a journey to reunite the brothers and rescue Floyd.

PAW PATROL: THE MIGHTY MOVIE (U)

Sunday 14 January & Sunday 28 January at 1.30pm (finishes at 3.05pm)



When a magical meteor crash lands in Adventure City, it gives the PAW Patrol pups superpowers, transforming them into The MIGHTY PUPS! For Skye, the smallest member of the team, her new powers are a dream come true. But things take a turn for the worse when the pups' arch-rival Humdinger breaks out of jail and teams up with a mad scientist to steal the superpowers for themselves. With the fate of Adventure City hanging in the balance, the Mighty Pups have to stop the supervillains before it's too late, and Skye will need to learn that even the smallest pup can make the biggest difference. Will the Mighty Pups stop the supervillains in time? Find out in Paw Patrol's next big movie adventure!

WISH (U)



Sunday 4 February & Sunday 11 February at 1.30 pm (finishes 3.10 pm)

Come and see the latest Disney film, Wish! It's a wonderful, new musical-comedy welcoming audiences to the magical kingdom of Rosas, where Asha, a sharp-witted idealist, makes a wish so powerful that it is answered by a cosmic force—a little ball of boundless energy called Star. Together, Asha and Star confront the most formidable foe—the ruler of Rosas, King Magnifico—to save her community and prove that when the will of one courageous human connects with the magic of the stars, wondrous things can happen.

To book a place for any of the Watermans activities, please contact Watermans box office on 020 8232 1010 or <https://www.watermans.org.uk/>

Please note that the website will open at 1pm on Tuesday 5 December for P3 and The website will be open from 1pm on Thursday 7 December for P2 – and the website will open at 1pm on Monday 11 December for P1 –Please book according to your child's pathway.

Watermans Box Office opening hours for telephone bookings:

Wednesday 6 December	1-7pm
Thursday 7 December	1-7pm
Friday 8 December	1-7pm
Saturday 9 December	1-7pm
Sunday 10 December	1-7pm
Monday 11 December	10am-1.30pm
Wednesday 13 December	1-7pm
Thursday 14 December	1-7pm

Watermans Studios, 40 High Street, Brentford TW8 0DS



Winter 2023 activities

Horse Riding – Park Lane Stables

Come and meet the horses at Park Lane Stables for a session that will give the young people a chance to meet the horses, learn about grooming the animals and a chance to have a ride. There are 6 young people in each session. Please note that there is a weight limit of 12 stones.

Sessions during the holidays are:

Friday 22 December – 9am-11am

Friday 22 December – 11am-1pm

Tuesday 2 January – 2pm-4pm

Wednesday 3 January 11am-1pm

Thursday 4 January 9am-11am

Friday 5 January 11am-1pm

Please note the address:

Park Lane Stables at Manor Farm
Petersham Road, Richmond, Surrey
TW10 7AH

Please note closed shoes/boots should be worn – sandals are not safe footwear for horse riding or being in the stables. This includes parent/carers as well as the young people.



Getting to Park Lane Stables

Manor Farm is between Ham Polo Club and the German School. If your Sat Nav/Google Maps cannot find Park Lane Stables, then set it to Ham Polo Club.

We are not based on Petersham Road itself. We are located down a private lane off Petersham Road.

Opposite the Fox & Duck pub on Petersham Road, you will see a large archway. Take the narrow private lane to the left of the archway. Take care over the speed bumps!

After 300yds, you will see the Park Lane Stables sign on the white gate as you approach. Please close the gate behind you.

Parking is very limited, if you cannot park at the stables, parking is available in the car park by the river next to Ham House.

Alternatively, you can take the 65 bus from Kingston or Richmond to the Fox and Duck pub on Petersham Road and walk down the lane (5 mins).

To book a place, please call Short Breaks on 020 8583 3636.



Sunday Sessions at Redlees and Reflections Play Centres

Families **do not** need to book the sessions at Redlees and Reflections on a Sunday - these are drop-in sessions. **Please note timings for the sessions will be between 10.00am-2.00pm. Please bring your child's UIN with you.**

See below dates for the Sunday sessions at the Redlees and Reflections play centres up to the February half term:

- Sunday 3 December – Redlees
- Sunday 10 December – Reflections
- Sunday 17 December – Redlees
- Sunday 24 December – CLOSED
- Sunday 31 December - CLOSED
- Sunday 7 January - Reflections
- Sunday 14 January - Redlees
- Sunday 21 January - Reflections
- Sunday 28 January - Redlees
- Sunday 4 February - Reflections
- Sunday 11 February – Redlees

For those that are new to Short Breaks, Redlees and Reflections are two play centres in the borough that have been adapted for children with disabilities with adapted play equipment, sensory rooms etc. Both venues are safe and secure. Family groups are welcome.

Please note that Play team staff have the right to refuse entry should numbers within the centres reach their capacity.

Redlees Centre



Worton Road, Isleworth, TW7 7DW (the play centre is in the corner of the Redlees park car park (accessed via Worton Road) which is next to the outdoor courts. Look for a purple sign with 'Redlees Play Centre' – there is secure access so you will need to buzz the staff to let you in.

Reflections



c/o Hounslow Urban Farm, Faggs Road, Feltham TW14 0LZ – the centre is next door to the entrance of the Urban Farm.

If you have any queries, please call 020 8583 3636 or email shortbreaks@hounslow.gov.uk



Winter 2023 activities

Brentford Fountain Leisure Centre

Family Swim

An exclusive Short Breaks swimming session at Brentford Fountain Leisure Centre have been arranged for:

Wednesday 3 January

Time: 9–11.30am

Please note that all children must be supervised in the pool – Brentford's Pool Admissions Policy is a ration of one adult to two children under the age of 8. If you are bringing more than two children under the age of 8, there must be two adults in the pool with them..

Brentford Fountain Leisure Centre

658 Chiswick High Road, Brentford
TW8 0HJ

To book a place or to find out more information please ring the Short Breaks team on 020 8583 3636 or e-mail: shortbreaks@hounslow.gov.uk.



Pool Party

Come and join us for a dip and a dance! A pool party has been organised for:

Friday 22 December

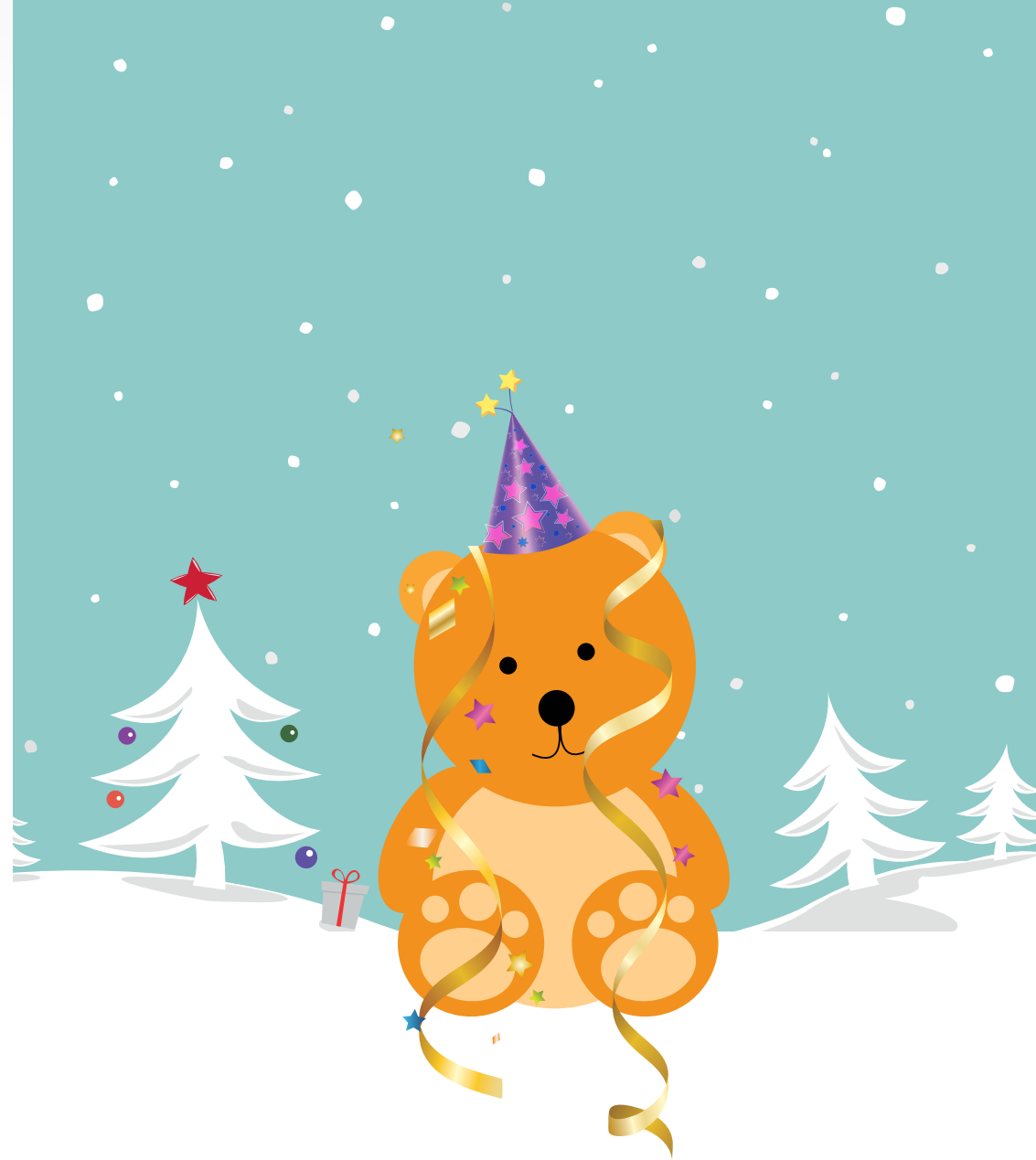
Time: 5–7pm

Please note that all children must be supervised in the pool – Brentford's Pool Admissions Policy is a ration of one adult to two children under the age of 8. If you are bringing more than two children under the age of 8, there must be two adults in the pool with them.

Brentford Fountain Leisure Centre

658 Chiswick High Road, Brentford
TW8 0HJ

To book a place or to find out more information please ring the Short Breaks team on 020 8583 3636 or e-mail: shortbreaks@hounslow.gov.uk



**BEST WISHES FOR THE FESTIVE SEASON
FROM THE SHORT BREAKS TEAM!**



Services Throughout The Year

Music Therapy – Richmond Music Trust



Richmond Music Trust are offering a slightly adjusted programme to children and families offering both direct contact music therapy sessions and online sessions.

Our online music therapy programme during the summer has been very popular and we have received some lovely feedback from families, which showed clearly that music therapy via video link can really work well for some children. Therapists and parents have been amazed about how effective children can engage in online music therapy accessing one to one and group sessions. As we are still unable

to use our usual premises at the Hub, we have decided to offer a mixed programme offering both **online** sessions as well as **direct contact** sessions:

Online Music Therapy Programme on Saturdays

Sessions will be a little different but our therapist Sara Cole will create a fun and child-centred experience including shared musical activities, singing and games. These sessions will be uniquely tailored to your child's needs, choices and ability. We have vacancies for weekly one to one sessions and vacancies in weekly small group session.

Sessions will need to be attended jointly with a parent, carer or sibling so that your child is supported to maintain engagement. If you have musical instruments at home these can be used and the therapists will also provide you with ideas of how to use household items for sound production.

This programme is open to children from Pathway 2 & 3. We accept referrals from those that would like to try out this mode of engagement or continue on from the summer programme.

How does it work?

All you need is a computer (PC or MAC), tablet or iPad and a reasonably stable internet connection. You will need to install the free Zoom application and we will send you all the info of how to do this. If you need any help, Joanna Dawson from Hounslow Short Breaks or Andreas Rosenboom from Richmond Music Trust are available to help if required.

Direct Contact Music Therapy Sessions on Saturdays at Richmond Music Trust, Twickenham, TW2 6RB

The Trust also offers sessions from their premises in Twickenham, TW2 6RB and therapist Muhamad Badry will be offering sessions on Saturdays between 10 and 4pm. We will adhere to social distancing and have a variety of measures in place to assure Covid Safety.

How do I enrol?

Please contact us if you wish your child to access the music therapy programme, by emailing: musictherapy@richmondmusictrust.org.uk

Please let us know if you wish to access the online or the direct contact option.



Services Throughout The Year

Heathrow Gymnastics Club – Play Gym

This service is only available to children registered with Short Breaks up to the age of 7 on pathways 2 and 3.



The play gym sessions are open to children on pathway 2 and 3 up to 7 years old or 130cm (4 feet, 2 inches). Brothers and sisters are welcome to attend but will need to be paid for by the family. Session times below. There is no need to book the sessions but arrive promptly to make sure you can access the session.

Heathrow Gymnastics Club, Green Lane, Hounslow, Middlesex, TW4 6DH

To find out more information, please ring the Short Breaks team: **020 8583 3636** or email shortbreaks@hounslow.gov.uk



Session times

Monday - Friday	Saturday	Sunday
10am – 11am	9.30am – 10.30am	Closed
11am – 12pm	10.30am – 11.30pm	
12pm – 1pm		
1pm – 2pm		
2pm – 3pm		
3pm – 4pm		

Congratulations...

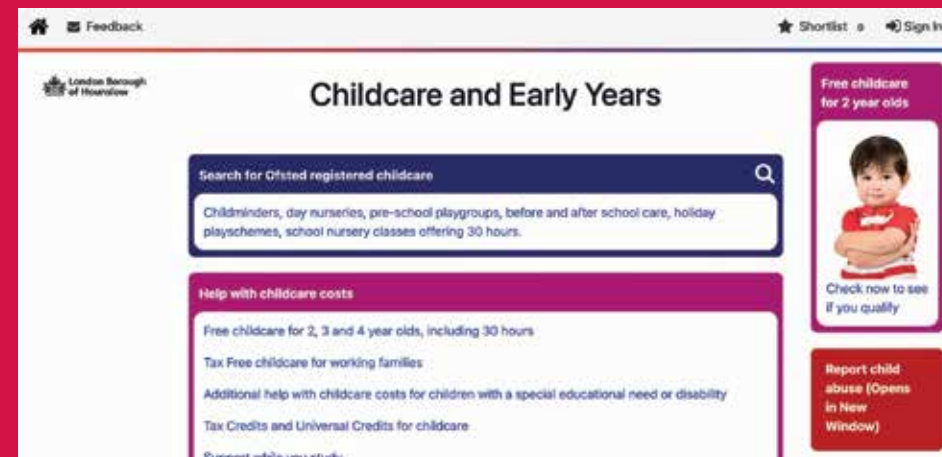
If you have any good news stories, let Short Breaks know and we will publish it in future newsletters.

Please call us on **020 8583 3636**.



Services Throughout The Year

Childminding – 24 Hours Free Childminding Service



The Short Breaks Service will pay for an introductory 24 hours childminding free. This is an opportunity for you and the childminder to start building a long-term supportive relationship for your child.

A registered childminder is a person who looks after children in the childminder's own home.

Registered childminders are found on the Hounslow Family Services Directory at www.hounslow.gov.uk/childcare. Select the search for childminders button and choose your area. You will see a list of childminders and will need to click on each name to see their full profile.

Some childminders may have listed specific experience they have in caring for children with a particular special need/ disability. From this information, it's advisable you then contact the childminder to see if they can accommodate your child's individual

needs along with the hours and days you are looking for.

Once you have found someone who meets your needs, call the Short Breaks team who will organise payment of the first 24 hours directly with the childminder. It will then be down to you to continue any ongoing payments with the childminder for further care.

- Your family/child must be registered with Short Breaks to use this service
- Your child must meet level of need pathway 2 or 3
- Once the 24 hours introductory offer is over, it is your responsibility to continue paying for the service.

For more information or to discuss organising your childminding, please call the Short Breaks team on **020 8583 3636**.





**Should you require this Newsletter
in a format other than English please
contact the Short Breaks team on
020 8583 3636 or email:
shortbreaks@hounslow.gov.uk**

**Children with Disabilities
Social Work Team**

London Borough of Hounslow
Hounslow House, 7 Bath Road,
Hounslow TW3 3EB
Telephone: 020 8583 3636

www.hounslow.gov.uk

December 2023