



Greater Manchester  
Integrated Care

# *Keep Connected:* Executive team appointments update

15 June 2022

  
**Heywood, Middleton  
and Rochdale**  
Clinical Commissioning Group

  
**Oldham**  
Clinical Commissioning Group

  
**Bury**  
Clinical Commissioning Group

  
**Tameside and Glossop**  
Clinical Commissioning Group

  
**Stockport**  
Clinical Commissioning Group

**Greater  
Manchester  
Health and  
Social Care  
Partnership**

  
**Manchester**  
Clinical Commissioning Group

  
**Salford**  
Clinical Commissioning Group

  
**Wigan Borough**  
Clinical Commissioning Group

  
**Trafford**  
Clinical Commissioning Group

  
**Bolton**  
Clinical Commissioning Group

  
**Greater Manchester Shared Services**



## **Executive team appointments**

Recruitment to key senior positions in NHS Greater Manchester continues and we are delighted to announce that we have made a number of exciting appointments including our chief nurse, chief officer for population health and inequalities, chief officer for strategy and innovation and place leads for health and care integration.

Our place leads for health and care integration will be responsible for driving the local integration of health and social care, connecting it to wider public services to address the social determinants of health. Working closely with local partners, place leads will play a central role in improving health outcomes and the quality of care, reducing health inequalities, and maximising the value of public resources within our communities.

Please note, some place lead for health and care integration appointments remain subject to local internal governance processes.

## **Chief Nurse - Mandy Philbin**

Mandy brings a wealth of experience in the NHS that spans both commissioning and providers and joins us from her role as Director of Nursing and Quality at Spectrum Community Health CIC; a social enterprise which delivers a range of community and offender healthcare services on behalf of the NHS, local authorities and other commissioners and partners.

As one of the chief nurses supporting the integrated care system in South Yorkshire and Bassetlaw, Mandy led on supporting care homes during COVID-19 and worked to ensure transformation work focused on addressing health inequalities and quality outcomes.

Talking about her appointment, Mandy said: “I feel very privileged to join a dynamic and compassionate team. I am looking forward to hearing the voices of our patients their families and our staff from across the areas and being able to work together to improve our services for when they are most needed.”



## **Chief Officer for Population Health and Inequalities - Sarah Price**

Currently the Chief Officer of Greater Manchester Health and Social Care Partnership, Sarah has a wealth of experience of working with NHS organisations and local authorities in the city region and led the system through the COVID-19 pandemic.



Until February 2020, Sarah was the Executive Lead for Population Health and Commissioning, overseeing the delivery of Greater Manchester's population health plan, the commissioning of primary care, specialised services, screening and immunisation and health and justice support.

Prior to coming to Greater Manchester in 2017, Sarah was the Chief Officer of Haringey CCG for four years and before this she was the first non-medical director of public health in London working jointly for the NHS and Local Authority to reduce health inequalities.

## **Chief Officer for Strategy and Innovation – Warren Heppolette**

Warren started his career in local government as a neighbourhood housing officer nearly 30 years ago before moving into policy and strategy roles. He joined the NHS in 2006 and has since held a number of roles supporting collaboration across the NHS and local government.

Since 2014, Warren has played a central role to bring devolved powers and budgets to Greater Manchester and most recently as Executive Lead for Strategy and System Development for Greater Manchester Health and Social Care Partnership, has supported the development of integrated care across the ten districts.

Warren is also a Trustee of Greater Sport, the county sports partnership for Greater Manchester and a Director of FC United of Manchester, a fan-owned football club.



## **Place Lead for Health and Care Integration Bolton - Fiona Noden**

Fiona has been the Chief Executive of Bolton NHS Foundation Trust since April 2020, joining the organisation just days after the first COVID-19 patient was admitted to the hospital. She led the organisation through the ensuing response and continues to do so.

Fiona started her career in healthcare as a radiographer, moving into operational management in 2006 and has led at a very senior level at both Salford Royal and The Christie.

Fiona is dedicated to delivering continuous improvements to provide patient and user-centred services and providing an inclusive environment for staff to flourish.



## **Place Lead for Health and Care Integration Bury - Geoff Little**

Geoff Little OBE was appointed as the Accountable Officer of NHS Bury CCG in October 2018. The role is a joint appointment with Bury Council. Geoff undertakes the lead Chief Executive role for Greater Manchester on Children and Young People. He has significant public sector experience, starting his career in public service straight from school as a Clerical Assistant for Liverpool City Council. He then worked as a Committee Clerk gaining experience in housing, planning and education.



In 1986 Geoff moved to Bury Council with positions in policy and research, where he was active in environmental, voluntary and community involvement and equality policy work. In 1996 Geoff joined Manchester City Council where he was Head of Corporate Performance and then Assistant Chief Executive with responsibility for performance improvement and human resources, becoming Deputy Chief Executive in 2009. During this time, he had responsibility for strategic development of children, adult and education services, public services reform and supporting and implementing the devolution of health and social care in Greater Manchester. Geoff was awarded an OBE in 2013 for his services to local government.

## **Place Lead for Health and Care Integration Heywood, Middleton and Rochdale (HMR)**

### **- Steve Rumbelow**

Steve Rumbelow was originally appointed Chief Executive of Rochdale Borough Council in December 2014.

Steve has a long career in local government spanning over 30 years. In addition to his Rochdale Council role, Steve was appointed as the HMR CCG Accountable Officer from 1 July 2018 as part of the borough's continuing drive to integrate health and social care to streamline services. His Accountable Officer role for the CCG means he has overall responsibility for the commissioning of NHS services for patients in the borough. For the Council Steve has overall responsibility for the full range of services including the running of the council itself and the borough's schools. He works closely with elected Councillors and partners from public, private and third sector organisations to achieve improvements across the borough and to deliver quality services.





## **Place Lead for Health and Care Integration Manchester - Joanne Roney, OBE**

Joanne has been the Chief Executive of Manchester City Council since April 2017. During that time she has guided the Council through some of the city's most difficult periods, including the aftermath of the Manchester Arena Bombing, as well as the ongoing response to the Covid-19 Pandemic.

She has served as the President of the Society of Local Authority Chief Executives and Senior Managers (SOLACE) since 2020, is a Trustee of the We Love Manchester Emergency Fund and Chair of the Manchester Memorials Trust, and in September 2021, she was named the Local Authority Chief Executive of the Year at the annual MJ (Municipal Journal) Awards.



## **Place Lead for Health and Care Integration Oldham - Mike Barker**

Mike Barker has a 25-year career working in public services with the majority of that time operating at senior level in the NHS and local government. He originally started out as a public relations and marketing specialist in local government with Knowsley Council on Merseyside before moving to Saatchi and Saatchi.

He came into the NHS in 2002 and has worked in most parts of the North West and in most sectors – hospital, community, and commissioning. He joined Oldham four years ago as a joint appointment between the CCG and Oldham Council where he is currently the CCG's Accountable Officer and an Executive Director of the Council.



## **Place Lead for Health and Care Integration Salford - Tom Stannard**

Tom is Chief Executive of Salford City Council and directly supports the elected city mayor to deliver local public services and improve the lives of the growing and diverse communities in Salford.

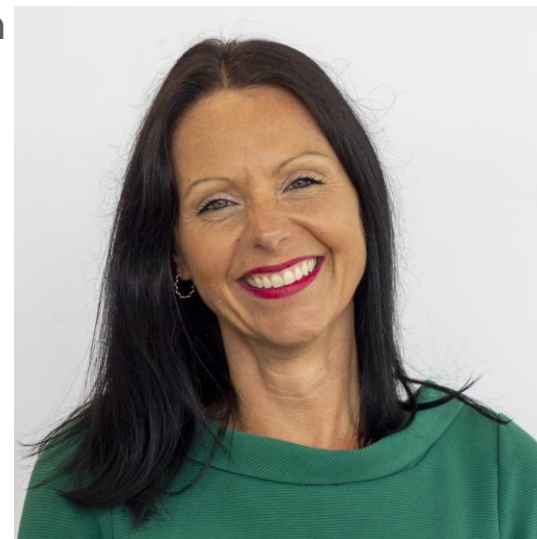


Tom is a nationally recognised expert in local government, public service reform and the delivery of inclusive growth. His background is in regeneration, economic development and skills, in Councils across the North of England and in London. He has extensive experience from integrated health and care systems and the wider determinants of public health and population wellbeing. He is a Chartered Surveyor, a Member and Board Director of the UK Institute of Economic Development (MIED), and a Commissioner on the Living Wage Foundation for the UK. For a number of years he has been a policy lead and spokesperson for SOLACE (Society of Local Authority Chief Executives).

## **Place Lead for Health and Care Integration Stockport - Caroline Simpson**

As Chief Executive at Stockport Council, Caroline Simpson is leading a growth and neighbourhood focused agenda which takes a place-based approach to connecting deeper into communities and addressing decades of inequalities. Caroline already has strong relationships with health and social care partners in the borough.

Previous roles span Local Government, Housing and Regional Development Agencies in the West Midlands and Northwest. Her career started in the City of Liverpool delivering community-based regeneration projects with a particular focus on work and skills.





**Greater Manchester**  
Integrated Care

**Place Lead for Health and Care Integration Tameside - Local authority chief executive. Name to be confirmed**

## **Place Lead for Health and Care Integration Trafford - Sara Todd**

Sara has worked in local government for 32 years, 15 of which have been at senior management level, all in Greater Manchester and in a wide variety of roles and the last three as Chief Executive at Trafford Council.

During this time Sara has managed place based programmes, led operational services, delivered major capital projects, driven forward corporate and strategic policies and objectives and operated locally, sub-regionally, regionally and nationally. She has developed strong and enduring relationships with colleagues, elected members and external partners from public, private, voluntary and community sectors to deliver shared objectives and has extensive experience of building cohesive, effective teams.



Sara has an absolute belief in and passion for public service and is committed to the values of the NHS. Sara will be working closely with colleagues and partners in Trafford to improve outcomes in population health and healthcare; tackle inequalities in outcomes, experience and access to services; enhance productivity and value for money and help the NHS to support broader social and economic development. She is also the Chief Executive lead for the Equalities, Inclusion and Cohesion Portfolio at the Greater Manchester Combined Authority.

## **Place Lead for Health and Care Integration Wigan - Alison McKenzie-Folan**

Alison is Chief Executive at Wigan Council having work in Local Government for the last twelve years and previously in the Civil Service for twenty years.

Alison is also the Greater Manchester Combined Authority (GMCA) lead Chief Executive for Culture.



Alison is passionate about public services and determined to make a difference for residents and communities. She is dedicated to inspiring the next female generation and committed to collaboration, innovation and technology. She is a Board Member of Solace (Society of Local Authority Chief Executives) and spokesperson for Solace on the digital agenda. Alison is also a Board member for Open Data Manchester and Digital Leaders. Alison was named in the Northern Power Women Top 50 Power list and one of the nine most influential digital leaders in Greater Manchester.