



# Public Realm Improvements

## *Open Spaces*

- Burns House Museum Courtyard
- Loudoun Street Carpark
- The Cross
- Churchyard Wall
- Poosie Nansies
- 4 & 6 Loudoun Street
- Rear of Mauchline Castle



# Introduction

A key part of Mauchline CARS is to deliver improvements to our public spaces or as we call it our Public Realm within the Conservation Area of Mauchline. You may have recently seen some social media stories regarding our potential Public Realm improvements. If you didn't get the chance to share your views with us regarding these we would love to hear from you.

We have recently been working with our Conservation Accredited Architects at Wylie Shanks to produce a catalogue of potential Public Realm Improvement Projects. Following discussions with our Mauchline CARS Steering Group we would like to hear from the whole community on your thoughts for our proposals.

## **What is "Public Realm" you ask?**

When we talk about "Public Realm" we refer to a range of features within our village. This can include open spaces, soft landscaping, street lighting, street signage and street furniture to name a few. We have reviewed all open spaces within Mauchline including the pedestrian and vehicle movement around these spaces.

## **We want to hear from YOU!**

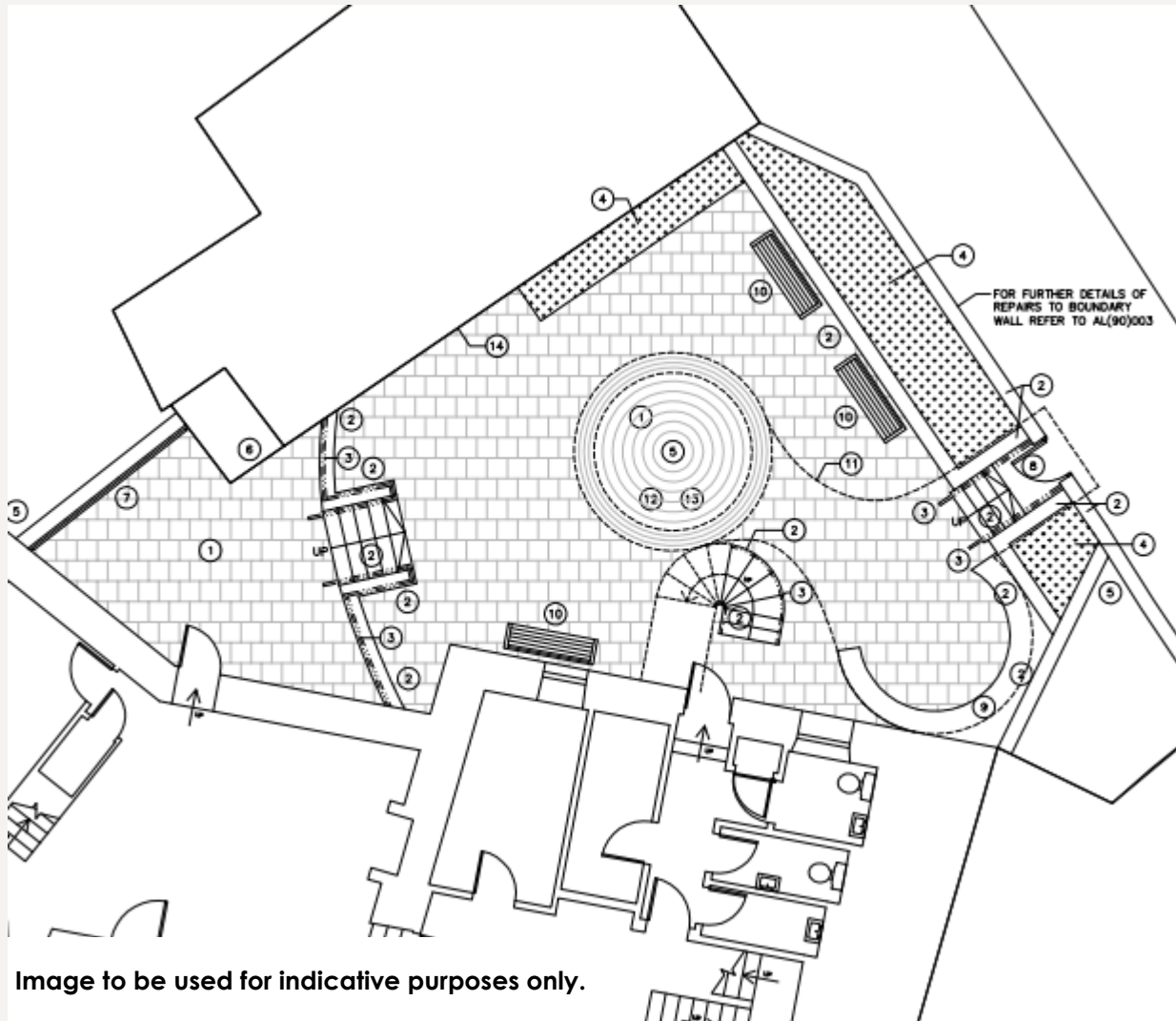
As our funding is limited we would love to hear your views on our proposals this will hopefully allow us to see the communities priority areas for improvement. Please review the below information and complete our short online survey to vote for your favourite proposal as well as the opportunity to note any further areas of matters to consider.

Potential sites for improvement have been identified as;

- Burns House Museum Courtyard,
- Loudoun Street visitor carpark,
- The Cross,
- Poosie Nansies,
- Rear of Abbot Hunter's Tower and
- Churchyard boundary wall.



# BHM Courtyard



## PROPOSED WORKS

- Clean all & re-set req. paving
- Remove tree and infill
- Repoint stonework to wall and re-set coping. All cleaned.
- Repaint all metal work
- Remove current sign
- Replant raised beds
- Refurb current benches
- New decorative screens
- New curved poetry bench
- New bespoke gate and canopy incorporating sign and lighting
- New external lighting
- New external light projector on gable of next building

## NOTES

High impact improvements

Potential to become a medium/high footfall area for both locals and visitors

Courtyard planned to be open from Kilmarnock gate during opening times allowing free flow of use

Unmeasurable potential for increased use from all groups (community, visitors, schools, etc)

Not grant eligible

## IMPROVEMENTS

Improvement to historic fabric

Increased utilisation

Improvement to public space

Overall improvement to attractiveness of area

Improved visitor information



# Loudoun St Carpark

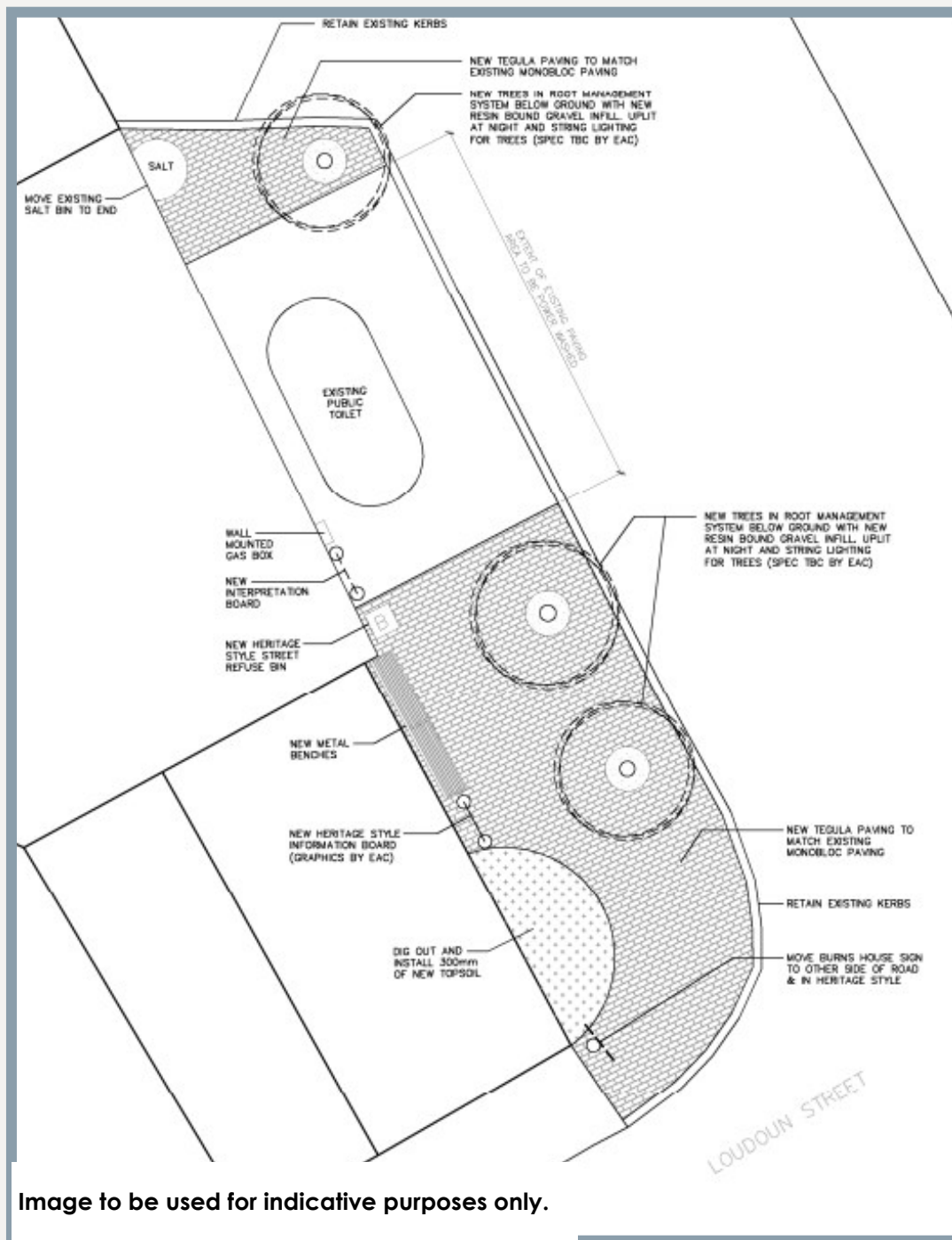


Image to be used for indicative purposes only.

## PROPOSED WORKS

Install new trees, “Burns” themed bench, interpretation board and directional signage.

Resurface area in tegula style paving in similar colour to monobloc used elsewhere on street.

New heritage black bin

Soft landscaping to existing flower bed and Kays Ailsa granite sculpture.

Clean existing surface material

## NOTES

High impact improvements

High footfall area for both locals and visitors along with being one of the key sites for the Holy Fair

Potential for grant eligibility to signage only

## IMPROVEMENTS

Improvement to public space

Increased utilisation

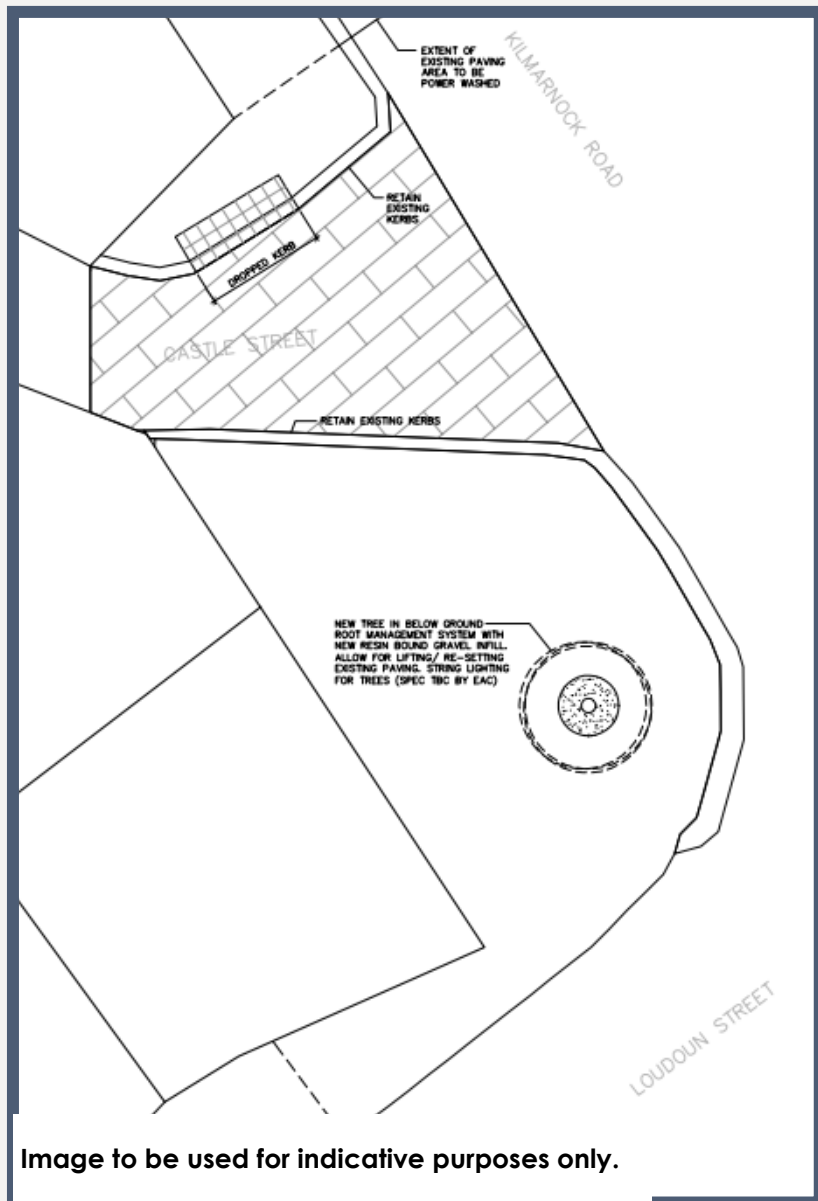
Overall improvement to attractiveness of area

Improved visitor information





# The Cross



## PROPOSED WORKS

Re-surface entrance to Castle Street

Install new tree

Clean existing surface material

## NOTES

Low impact improvements due to level of congestion of roads and usability of space.

Costs could increase due to the likelihood of underground services within the area.

No grant eligibility

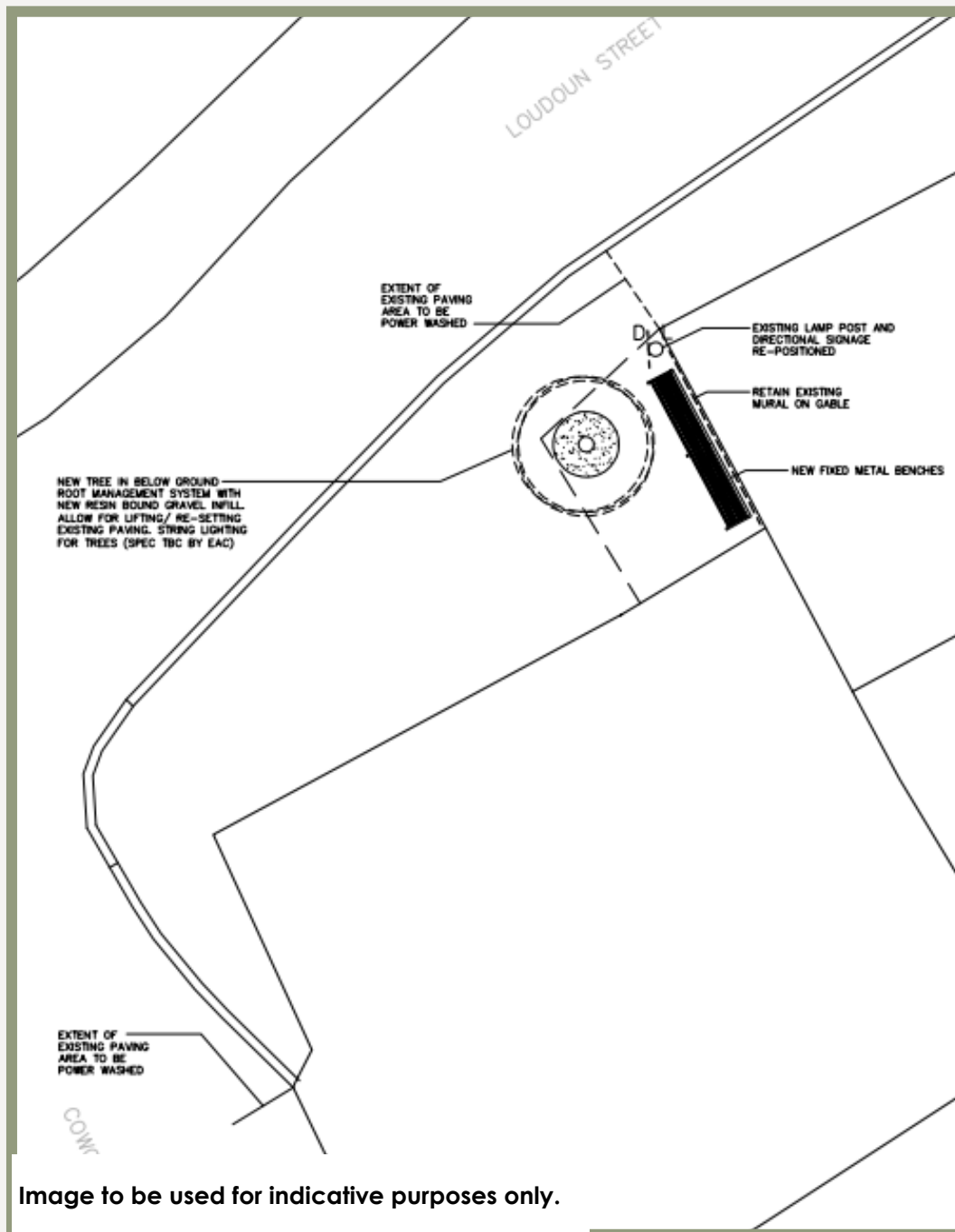
## IMPROVEMENTS

Improvement to public space

Overall improvement to attractiveness of area



# Poosie Nansies



## PROPOSED WORKS

Install new tree and heritage style bench

Clean existing surface material

Re-instate cornerstone

Relocate lamp post at pinch point to round corner (next to bench)

Possible addition of string lights around tree trunk.

## NOTES

Low impact improvements

No grant eligibility

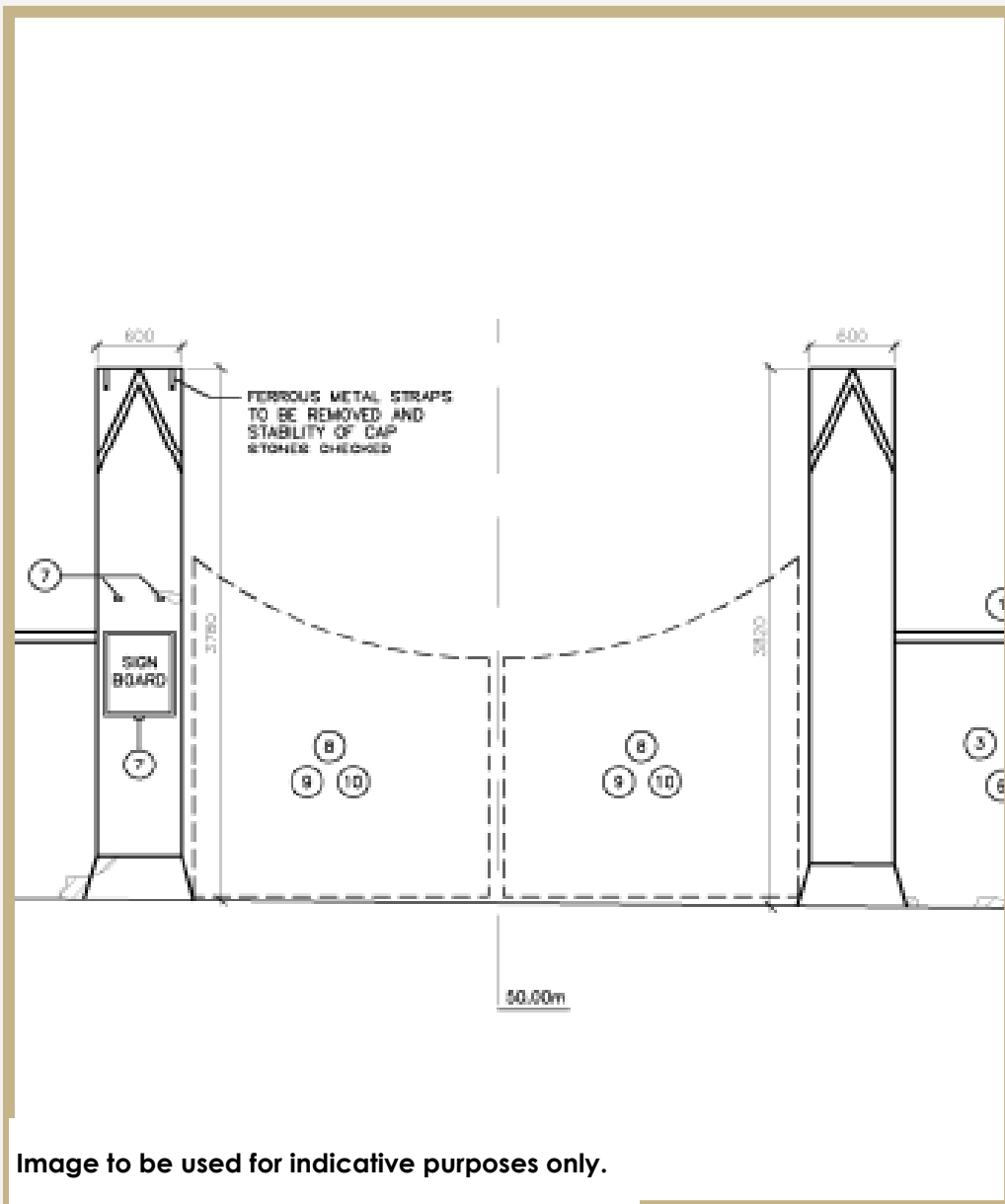
## IMPROVEMENTS

Improvement to public space

Overall improvement to attractiveness of area



# Churchyard Wall



## PROPOSED WORKS

- Clean full length of wall
- Remove all vegetation growths
- Remove cementitious mortar
- Repoint with lime mortar
- Re-bed coping stones where req.
- Remove any redundant fixtures
- Install new metal grill at pipe
- Remove brick infills and repair with stone
- Remove render and repair stone
- Clean back gates and repaint in black gloss

## NOTES

Both sides of wall currently considered, however due to costs and visibility Loudoun Street façade may be the only side progressed.

High impact to surrounding area due to size of wall and prominence within the Conservation Area.

Grant eligible

B-Listed structure

## IMPROVEMENTS

Improvement to historic fabric

Improvement to public space

Overall improvement to attractiveness of area



# Rear of Mauchline Castle

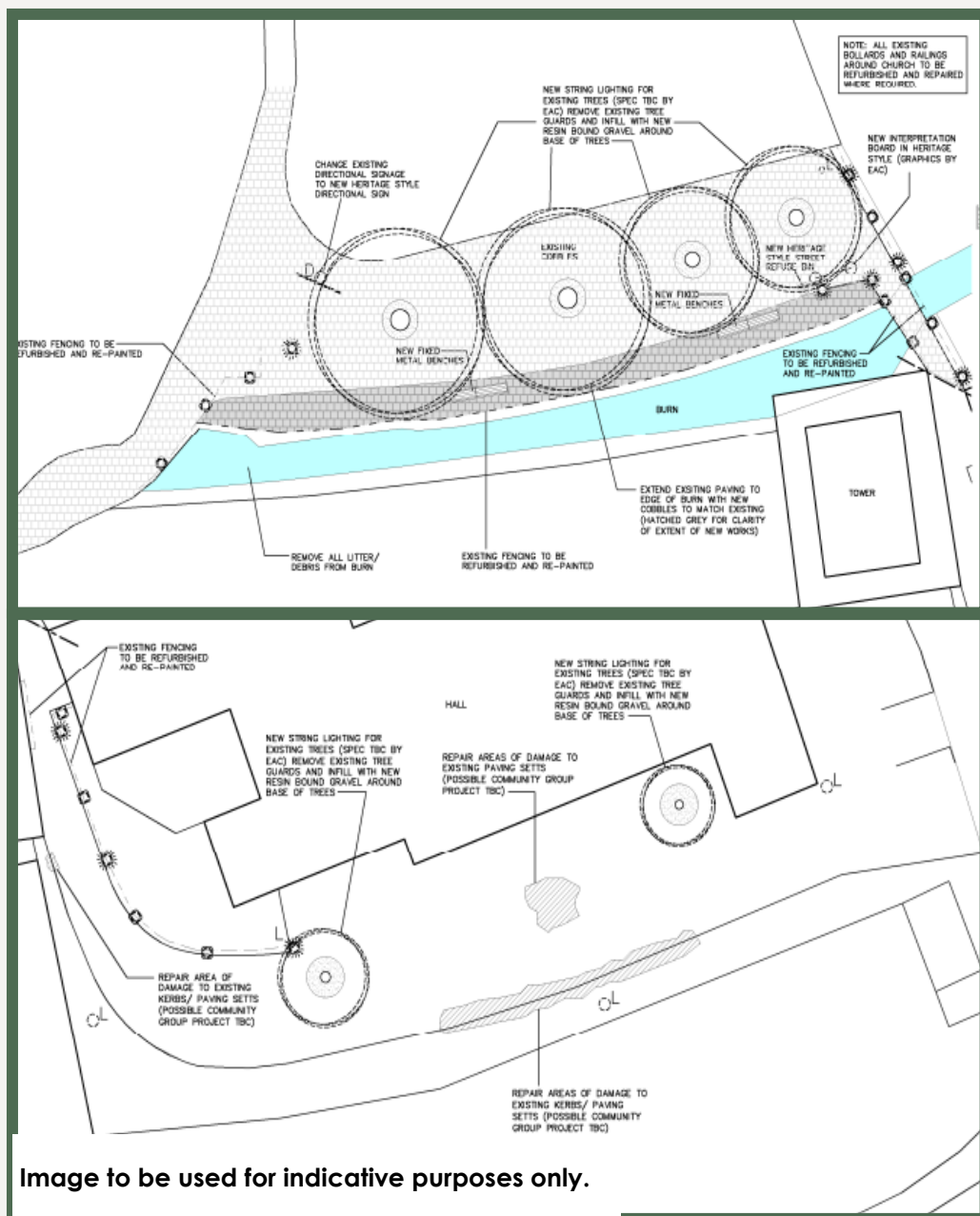


Image to be used for indicative purposes only.

## PROPOSED WORKS

- Extent setts to edge of burn
- Remove tree guards
- Infill tree metal work with resin gravel
- Clean and paint all previously painted railings and bollards
- Refurb previously lit bollards
- Install interpretation board noting castle, burn and green
- Replace standard signage with heritage style
- Install two new benches and bin

## NOTES

High impact improvements  
 medium footfall area for both locals and visitors however key site for the Holy Fair  
 Area has unfortunately been vandalised previously and lacks purpose out with the Holy Fair  
 Planned improvements here are limited without engagement with owners at 8 Loudoun Street,  
 Potential for grant eligibility of setts and signage

## PRIORITY SCORING

- Improvement to historic fabric
- Increased utilisation
- Improvement to public space
- Overall improvement to attractiveness of area
- Improved visitor information

