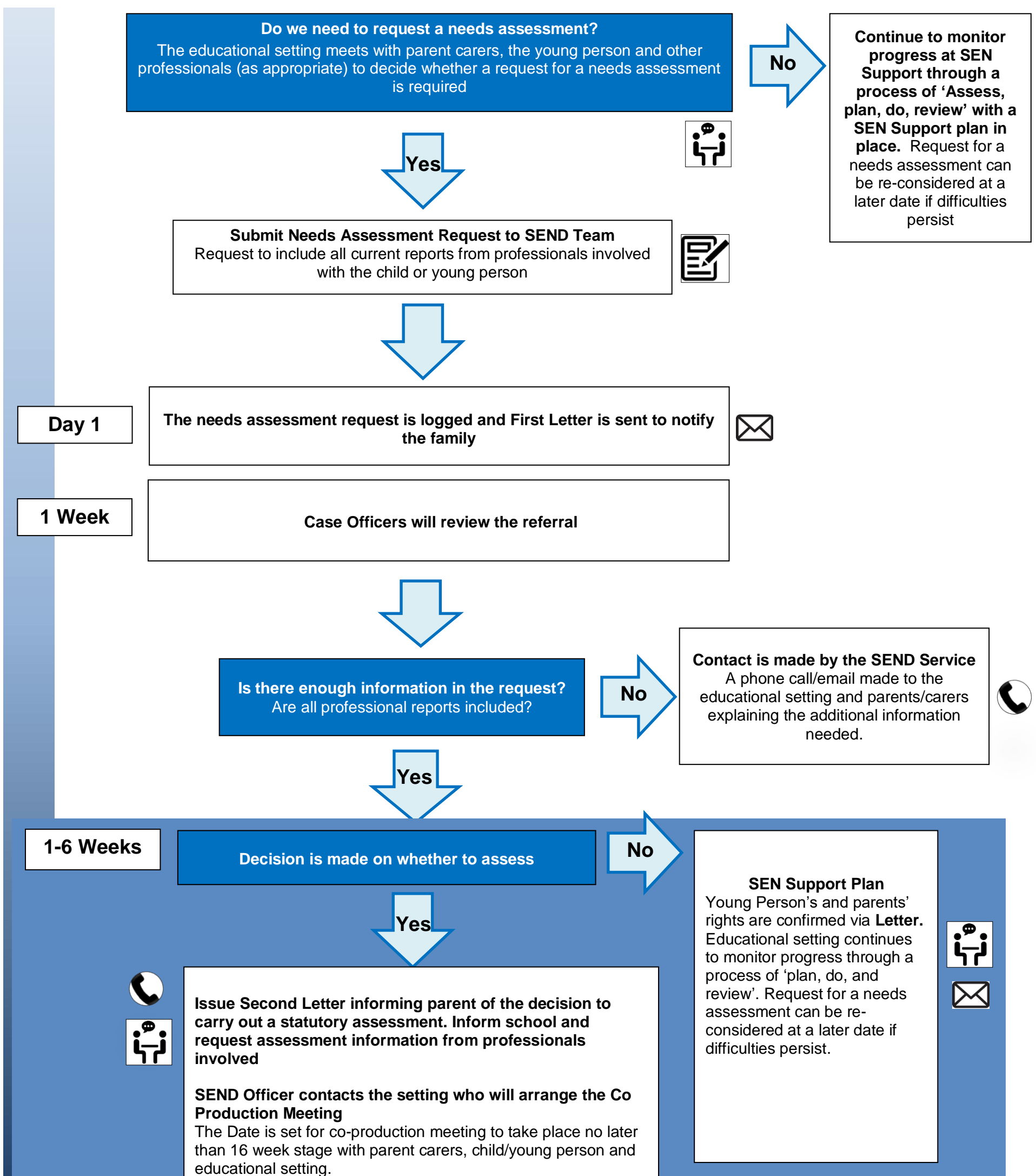


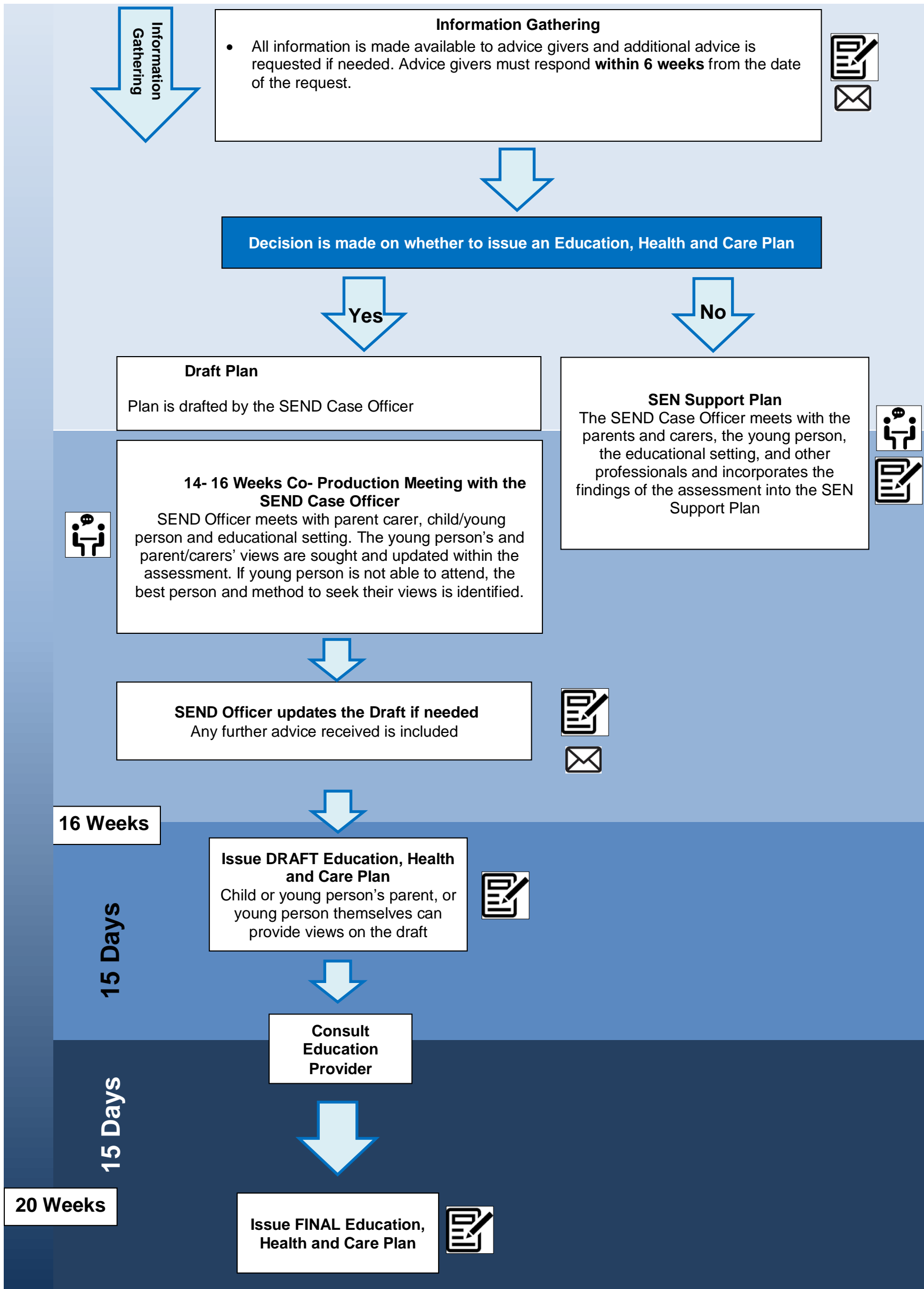
A visual has been developed in order to provide a visual explanation of the Statutory 20 Week timescale when a request for a Needs Assessment has been made by an educational setting, a parent carer or a professional which could lead to a strengthening of the SEN Support plan in settings or the issuing of an Education Health Care Plan. This reflects the roles of the SEND Team, young people, parent carers and other professionals involved and includes a new meeting between 14 and 16 weeks of the process called the Co-Production Meeting.

The aim of this is to enable all involved to contribute to the Draft Education Health Care Plan to ensure it reflects the needs of the young person and the provision and support to be provided. This document will be part of an Introductory Pack for new Requests and well as to support our partners' understanding of the timescales involved. Once again this will be included in the new Local Offer site.

Educational Setting requesting an Education, Health and Care Needs Assessment



Completing an Assessment for an Education, Health and Care Plan



The whole process needs to be completed within 20 weeks