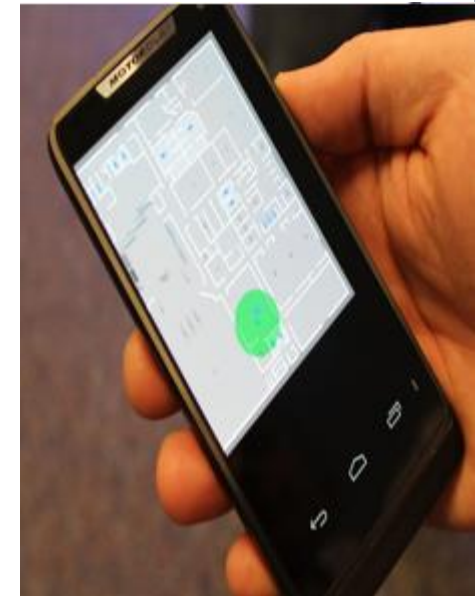
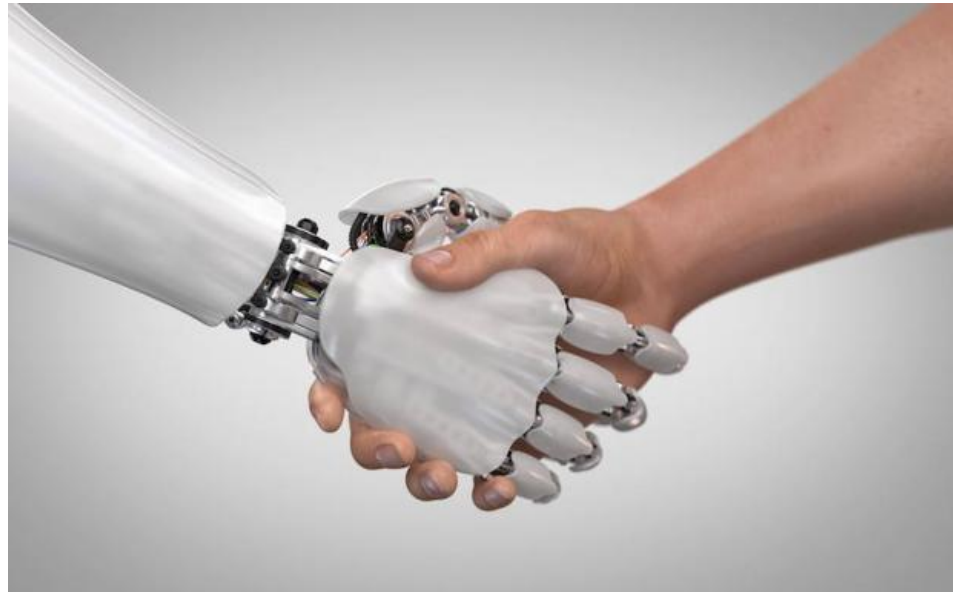
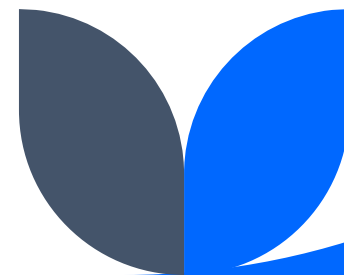
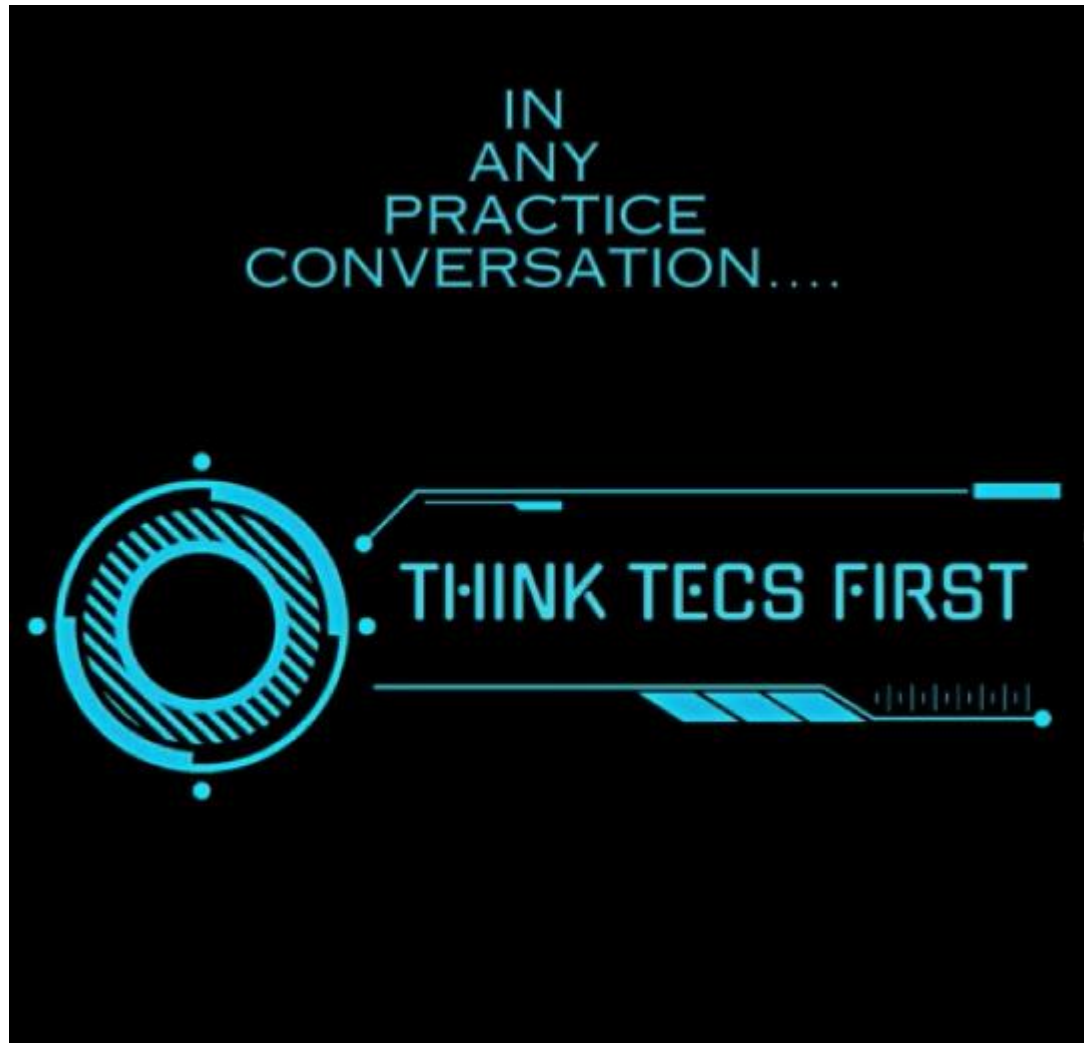


# Technology Enabled Care and Support (TECS)... in our Adult Social Care Practice.

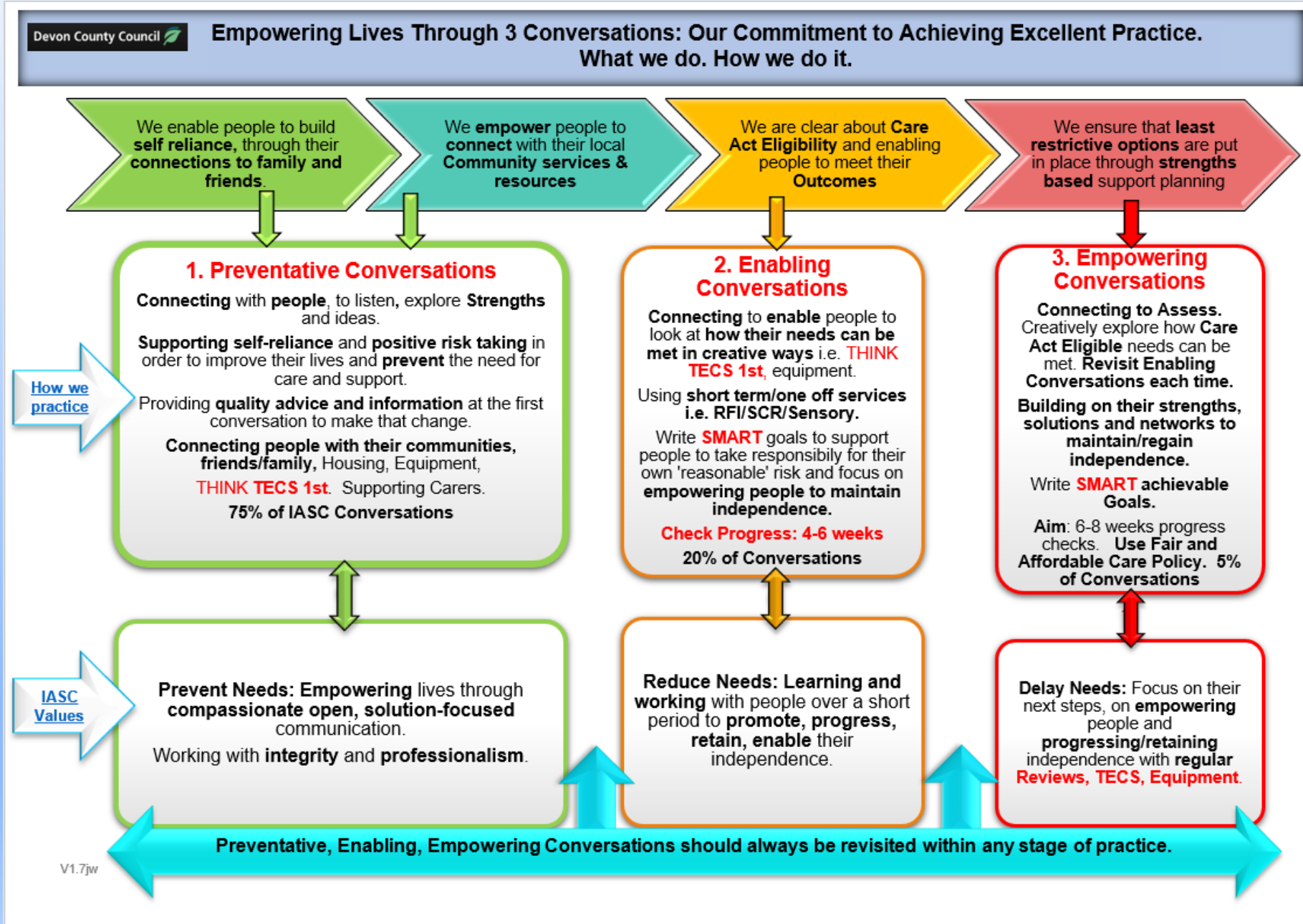
With Jeff Walker,Carolyn Hague, RFI and Millbrook



# Why are we Focusing ON TECS as part of every Conversation?



# TECS is one of the Key Foundations supporting our Strengths Based Practice.



# What do we define as 'TECS'?

**TECS: Can Support people to perform their everyday tasks and/or maintain their safety.**

TECS can either be standalone devices or technology (including Apps etc.) in addition to devices or Apps which connect to responders/centres, or other configurations.



# TECS - Mental Capacity Act and Community Dol:

Practitioners always **need to consider** whether any proposed solution/intervention (including equipment/minor adaptation) will potentially be a restrictive, infringement of the person's Human Rights ie having a Camera in their home.

And Practitioners **should evidence that they have done so** within their assessments/case recording.

**Covert** use of tracking devices or recording equipment for **someone with capacity** is not lawful.

# TECS - Mental Capacity Act and Deprivation of Liberty:

A deprivation of liberty arises where an individual lacks capacity to consent to the care/ treatment arrangements that give rise to a deprivation of liberty. This can include the use of technology which might mean that a person is subject to continual monitoring. For example, a GPS tracking device.

It doesn't matter whether the person is living in their own home, or in a care setting – you must still consider this.



All about Mental Capacity



# What Next?

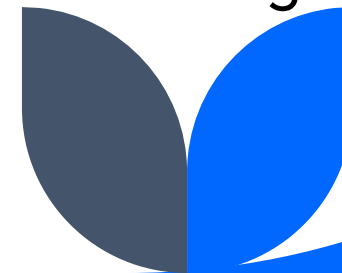
If you assess that the person lacks capacity to consent to the equipment/technology you can still use it.

**However, it must be:**

- Deemed in their **Best Interests**
- **Necessary and proportionate** to the risks identified
- The **Least Restrictive option** available.

If the person is deemed to be deprived of their liberty – you can still use the equipment /technology.

**However**, you will **need to consider** how this should be authorised and whether this needs to be done by the **Court of Protection** or whether it might be the **Deprivation of Liberty Safeguards** for those living in a care home.





# What should TECS do?

## It should:

- Support people to be **independent**
- Reduce** avoidable **hospital admissions**
- Can help people to **develop their interests/get involved**
- Help people to **connect with loved ones**
- Help to **support** peoples' information and communication needs
- Help to **deliver timely care and support**
- Help people to **contribute to their care planning and reflect their needs**
- Be **easy to use and provide solutions.**





# Where can we go for TECS support?



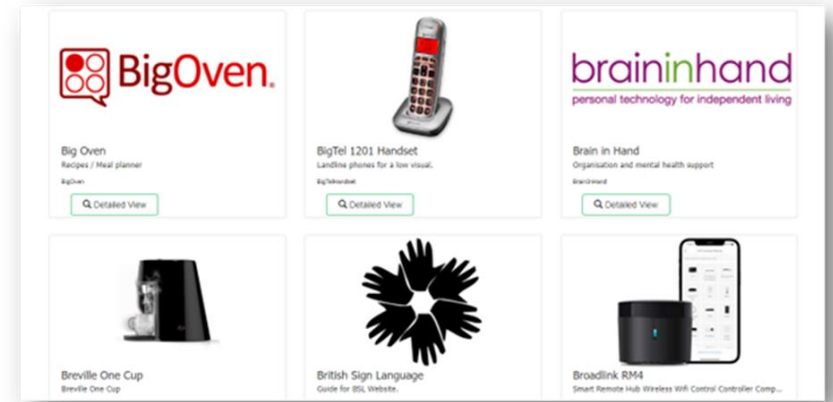
**There is support for your practice:**

**The Independent Living Centre..... Refer to their website for general information and resources related to TECS.**

Our [Equipment Advice Devon](#) website has information about TECS options available that both the general public and you as social care workers can access.

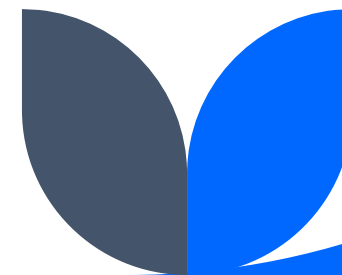
**Reaching For Independence – Refer only where enabling plans and goals focused work is needed.**

**Our DCC Web Pages – TECS advice and support for members of the public.**



Independent living

**Technology enabled care services**

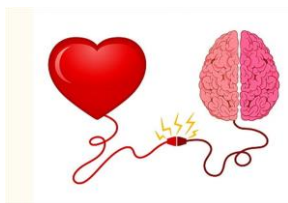


# TECS in Practice...Changing Hearts and Minds.

People often think that implementing new technology is about technical issues – but it's also about cultural issues and new ways of working.

It's important to communicate well with people about technology and its impact.

This includes both benefits (i.e. cost saving for the person with a 1 off piece of TECS... compared to ongoing Care and Support) and challenges (i.e. Wi Fi connection).



# How is TECS funded?

**1. Through Preventative, Enabling and Empowering lives through 3 Conversations:** Utilising technology that is already in people's lives – i.e. iPad, mobile phone, Alexa, etc

**2. Where Eligible: Community Services offer** – Free (to person) access to specific TECS under current community equipment service - Available via prescribers of the community equipment service.

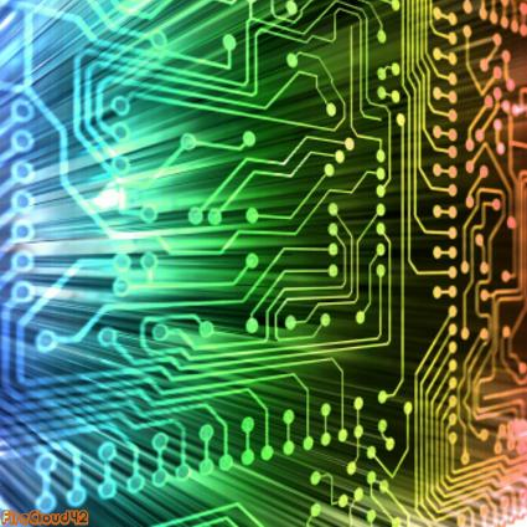
**3. Direct Payments option to meet Eligible needs**, where TECS can best meet that need but 1 and 2 above **are not possible** nor 4 or 5 below. A one off payment, but with ongoing payments, consider paying for equipment and period of subscription and then the person pays for this after first 6months/1 year.

**4. Funding telecare through DFGs:** - [Disabled Facilities Grant \(DFG\) delivery: Guidance for local authorities in England - GOV.UK \(www.gov.uk\)](#) under the assistive technology section – referral via occupational therapists.

**5. [Electronic Assistive Technology Service Referral | North Bristol NHS Trust \(nbt.nhs.uk\)](#)**

**Available for anyone, all ages, medical conditions who meet the criteria.** Criteria defined by

**NHS England Service Specification for  
Complex Disability Equipment: Environmental Controls.**



# Using TECS in Practice – RFI team



# What types of TECS do we have under our DCC TECS Community Equipment service contract?



**Thank you for  
Listening and  
learning...it is  
now over to you  
TECS leaders.**

