

Love learning locally

Derbyshire
Dales

Derbyshire Adult Community Learning

April to July 2023
Courses

**Book
Now**



Celebrate Earth Day

Saturday 22 April at Derbyshire Eco Centre

Scan the QR code for information and to book a free workshop



Booking, Payment and Fees

How to book and pay

Booking and payment for all our Community Learning courses is via our Eventbrite page [derbyshireadulteducation.eventbrite.com*](https://www.eventbrite.com/derbyshireadulteducation)

Help with online booking

If you struggle with online booking and payment, we are here to help. Drop into your local centre or give them a call. Centre contact details are on the back page. If you get the answer machine leave a message with your name and contact details and someone will call you back.

Course fees explained

Many of our Community Learning courses have three different fee bands:

- Fee A: Full fee
- Fee B: Derbyshire Gold card Holders
- Fee C: Concessions for those on certain benefits/ allowances

For more details on course fees and concessions visit www.derbyshire.gov.uk/coursefees or ask in your local centre.

Some courses may also have additional materials costs as indicated in the course listings. See course information on our Community Learning pages and Eventbrite for details.

Cancellations

If you need to cancel your place on a course you have booked on to, you can do it yourself on Eventbrite, contact the organising centre or email adult.education@derbyshire.gov.uk.

Please note that if you cancel your place on a course which has fees, the percentage of the fee that covers the Eventbrite costs is non-refundable (approximately 6%).

If for any reason we have to cancel a course, the full fee is refundable. If we change a centre-based course to an online course (for safety reasons) and you wish to cancel your place, the full fee is refundable.

* Except for courses that say to contact centre. We can help you with online booking if you need it.

Welcome to our Summer Programme

This brochure contains our Community Learning courses in Ashbourne, Matlock and the Derbyshire Eco Centre from April to July 2023. It includes details of our centre-based and outdoor courses and provides information on where to find out more about our online courses.

To find out more and book on a course simply go to www.derbyshire.gov.uk/coursesearch and click on Community Learning to search for a course. Simply scroll down the page to look for courses at a particular venue or use the menu on the left to search for courses by subject.

Here you will find further information about the course and a link to its Eventbrite page for full details and booking. See the back page for where to get help if you struggle with getting online.



Ashbourne

Ashbourne ACE Centre, Cokayne Avenue,
Ashbourne DE6 1EJ

The Ashbourne team can be contacted on

ashbourne.ace@derbyshire.gov.uk or **01629 533696**

for any additional information you require about Ashbourne courses, or for help with online booking. The office at Ashbourne ACE Centre is usually open on Mondays, Tuesdays and Thursdays during normal office hours and mornings only on Wednesdays.

For further information on any of the courses listed below and to book visit www.derbyshire.gov.uk/communitylearning

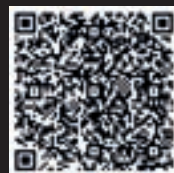
Scan the QR code to book



Course Title	No. of Weeks	Day, Date and Time	Fee A	Fee B	Fee C
Art - Drawing and Painting for Wellbeing	5	Tuesday 18 April to Tuesday 23 May, 1pm to 3pm	£54	£47	£17
Upholstery and Furniture Renovation	5	Tuesday 18 April to Tuesday 16 May, 6pm to 9pm	£114	£104	£57
The Regions and Wines of Europe	5	Wednesday 19 April to Wednesday 17 May, 7pm to 9pm	£76	£70	£38
Lip Reading all Abilities	5	Wednesday 19 April to Wednesday 17 May, 1pm to 3pm	FREE	FREE	FREE
Beginners Dressmaking	5	Thursday 20 April to Thursday 18 May, 10am to 12.30pm	£71	£63	£22
Patchwork and Quilting - Recycle and Repurpose	3	Thursday 20 April to Thursday 4 May, 1pm to 3pm	£34	£30	£11
Spring Herbal Remedies	1	Wednesday 26 April, 6pm to 9pm	£17	£15	£5
Small Sewing Project - Create a Favourite Piece	2	Thursday 11 May to Thursday 18 May, 1pm to 3pm	£23	£20	£7
Art Workshop - Summer Watercolour - Landscape and Buildings	1	Tuesday 30 May, 10am to 2.30pm	£31	£29	£16
Upholstery and Furniture Renovation	5	Tuesday 6 June to Tuesday 4 July, 6pm to 9pm	£114	£104	£58
AMUSF Upholstery Information Session	1	Tuesday 11 July, 11am to 12noon	FREE	FREE	FREE

Derbyshire Eco Centre

Scan the QR code to book



Porter Lane, Middleton, Wirksworth DE4 4LS

The Derbyshire Eco Centre team can be contacted on ecocentre@derbyshire.gov.uk or **01629 533038** for any additional information you require about Eco Centre courses, or for help with online booking. The office is usually open Monday to Friday during normal office hours.

For further information on any of the courses listed below and to book visit www.derbyshire.gov.uk/communitylearning

Course Title	No. of Weeks	Day, Date and Time	Fee A	Fee B	Fee C
Family Learning - Potting on - Pumpkin Planting Next Steps	1	Friday 14 April, 10am to 12noon or 1pm to 3pm	FREE	FREE	FREE
Stained Glass - Summer Flowers £	1	Saturday 15 April, 10am to 5pm	£37	£33	£12
Indigo Tie Dyeing £	1	Sunday 16 April, 10am to 4pm	£30	£26	£9
Mindfulness Art and Craft £	4	Monday 17 April to Monday 22 May, 11am to 1pm	£43	£38	£14
Block Printing - Repeat Pattern £	4	Monday 17 April to Monday 22 May, 2pm to 4.30pm or 6pm to 8.30pm	£43	£38	£14
Birdwatching for Beginners	1	Monday 17 April, 9.30am to 4pm	£46	£43	£23
Pottery For All £	5	Wednesday 19 April to Wednesday 17 May, 2.30pm to 5pm or 6pm to 8.30pm	£95	£87	£48
Coiled Basketry £	1	Sunday 7 May, 10am to 4pm	£30	£26	£9
Willow Obelisks for the Garden £	1	Saturday 13 May, 10am to 4pm	£42	£38	£21
Introduction to Woodland Ecology	1	Saturday 13 May, 9.30am to 4pm	£46	£43	£23
Spinning £	1	Saturday 13 May to Sunday 14 May, 10am to 4pm	£60	£52	£18

£ These courses have additional materials costs. See course information on our website and Eventbrite for details

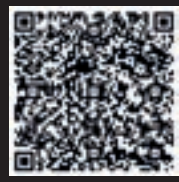
Course Title	No. of Weeks	Day, Date and Time	Fee A	Fee B	Fee C
Brightside - Dry Stone Walling	1	Thursday 18 May to Friday 19 May, 10am to 4pm	FREE	FREE	FREE
Stained Glass - Summer Flowers £	1	Saturday 20 May to Sunday 21 May, 10am to 4pm	£59	£52	£18
Wellbeing Day - Spring into Summer	1	Saturday 20 May, 10am to 4pm	£33	£29	£10
Bushcraft Survival	1	Saturday 20 May, 9am to 4pm	£37	£33	£12
Create a Hanging Herb Garden £	1	Sunday 21 May, 10am to 12noon or 1pm to 3pm	£12	£11	£4
Natural Dyes £	1	Saturday 27 May, 10am to 4pm	£30	£26	£9
Drawing Through Materials and Markmaking £	1	Saturday 27 May, 10am to 4pm	£30	£26	£9
Family Learning - Planting on the Heap - Pumpkin Planting Next Steps	1	Friday 2 June, 10am to 12noon or 1pm to 3pm	FREE	FREE	FREE
Family Learning - Bush Craft	1	Sunday 4 June, 10am to 12noon or 1pm to 3pm	FREE	FREE	FREE
Family Learning - Photography For Fun	1	Sunday 4 June, 10am to 12noon or 1pm to 3pm	FREE	FREE	FREE
Mindfulness Art and Craft £	4 or 5	Monday 5 June to Monday 10 July, 11am to 1pm	£54	£47	£17
Printmaking - Lo-Fi Screen Printing £	5	Monday 5 June to Monday 10 July, 2pm to 4.30pm or 6pm to 8.30pm	£54	£47	£17
Brightside - Photography for Mindfulness	6	Monday 5 June to Monday 10 July, 10am to 12noon	FREE	FREE	FREE
Pottery For All £	5	Wednesday 7 June to Wednesday 12 July, 2.30pm to 5pm or 6pm to 8.30pm	£95	£87	£48
Botanical Art - Capturing Summer Flowers £	5	Thursday 8 June to Thursday 6 July, 10am to 12noon	£54	£47	£17
Ceramic Garden Sculpture £	1	Saturday 10 June, 10am to 4pm	£30	£26	£9

Course Title	No. of Weeks	Day, Date and Time	Fee A	Fee B	Fee C
Making Things with Pallets	1	Saturday 17 June to Sunday 18 June, 10am to 4pm	£60	£52	£19
Introduction to Woodland Shelter Building	1	Saturday 17 June, 9.30am to 4pm	£34	£30	£11
Stained Glass Weekend £	1	Saturday 24 June to Sunday 25 June, 10am to 5pm	£71	£61	£22
Summer Herbal Remedies £	1	Saturday 24 June, 10am to 4pm	£33	£29	£10
What's That Plant?	1	Sunday 25 June, 10am to 12noon or 1pm to 3pm	£12	£11	£4
Drying & Preserving Herbs & Flowers in Summer	1	Wednesday 28 June, 6pm to 9pm	£17	£15	£5
Tapestry Weaving £	1	Saturday 1 July, 10am to 4pm	£30	£26	£9
Joinery for Improvers £	2	Saturday 1 July to Saturday 8 July, 10am to 4pm	£84	£76	£43
Bushcraft Survival	1	Saturday 1 July, 9am to 4pm	£37	£33	£12
Rag Rug Making £	1	Sunday 2 July, 10am to 4pm	£30	£26	£9
Friend or Foe? Identifying Plants from the Garden	1	Sunday 16 July, 10am to 12noon or 1pm to 3pm	£12	£11	£4
Summer Cookery on a Budget	1	Thursday 20 July, 10.30am to 4pm	FREE	FREE	FREE
Inkle Weaving £	1	Saturday 22 July, 10am to 4pm	£30	£26	£9
Introduction to Woodland Shelter Building	1	Saturday 22 July, 9.30am to 4pm	£34	£30	£11
Family Learning - Photography For Fun	1	Thursday 27 July, 10am to 12noon or 1pm to 3pm	FREE	FREE	FREE
Family Learning - Recycled Pots for Summer Seeds	1	Friday 28 July, 10am to 12noon	FREE	FREE	FREE
Family Learning - Grow your own Tree	1	Friday 28 July, 1pm to 3pm	FREE	FREE	FREE

£ These courses have additional materials costs.
See course information on our website and Eventbrite for details

Matlock

Scan the QR code to book



Matlock ACE Centre, Steep Turnpike, Matlock DE4 3DP

For additional information about Matlock courses, or for help with online booking contact the Matlock ACE team on matlock.ace@derbyshire.gov.uk or **01629 533225**.

The office is usually open Monday to Friday during normal office hours.

For further information on any of the courses listed below and to book visit www.derbyshire.gov.uk/communitylearning

Course Title	No. of Weeks	Day, Date and Time	Fee A	Fee B	Fee C
Art - Drawing and Painting for Wellbeing	4	Monday 17 April to Monday 22 May, 1pm to 3pm	£43	£38	£14
Lip Reading All Abilities	5	Tuesday 18 April to Tuesday 16 May, 1.15pm to 3.15pm	FREE	FREE	FREE
Evening Yoga and Relaxation	5	Wednesday 19 April to Wednesday 17 May, 6pm to 7.15pm	£48	£44	£24
Spanish Beginners	5	Wednesday 19 April to Wednesday 17 May, 10.30am to 12noon	£40	£36	£12
French Beginners (Term 3)	5	Thursday 20 April to Thursday 18 May, 1pm to 2.30pm	£40	£36	£12
French Intermediate	5	Thursday 20 April to Thursday 18 May, 10am to 12noon	£53	£47	£17
Spanish Improvers	5	Friday 21 April to Friday 19 May, 1pm to 2.30pm	£40	£36	£12
Family Learning - Creative Mosaics	1	Wednesday 31 May, 10am to 12noon	FREE	FREE	FREE
Family Learning - Creative Mosaics	1	Wednesday 31 May, 1pm to 3pm	FREE	FREE	FREE
French Beginners Free Taster	1	Thursday 1 June, 1pm to 3pm	FREE	FREE	FREE
Evening Yoga and Relaxation	8	Wednesday 7 June to Wednesday 5 July, 6pm to 7.15pm	£48	£44	£24
Spanish Beginners	5	Wednesday 7 June to Wednesday 5 July, 10.30am to 12noon	£40	£36	£12
French Beginners (Term 3)	5	Thursday 8 June to Thursday 6 July, 1pm to 2.30pm	£40	£36	£12
French Intermediate	5	Thursday 8 June to Thursday 6 July, 10am to 12noon	£53	£47	£17
Spanish Improvers	5	Friday 9 June to Friday 7 July, 1pm to 2.30pm	£40	£36	£12
Art Workshop - Summer Acrylics - Landscape and Buildings	1	Saturday 24 June, 10am to 2.30pm	£31	£29	£16

Make friends with numbers

Multiply - courses to help adults make things add up!

If you're aged 19 and over and don't have maths GCSE at grade C (or equivalent), you can access free numeracy courses through Multiply to build your confidence with numbers and maybe even gain a qualification.

**SKILLS
FOR LIFE
MULTIPLY**

Good numeracy skills unlock job opportunities and lead to higher wages or prepare you for further study. They also help in everyday life, such as assisting children with homework and budgeting money.

There are courses for beginners to more advanced courses such as GCSE maths, functional skills qualifications, or equivalent. Online tutorials and content are also available, so you'll be able to learn at a pace that suits you.



How Multiply can help you?

Does the thought of needing to do maths at work or home make you anxious?

You aren't alone, as 57% of England's working age adult population is estimated to have low numeracy skills.

Join our Multiply programme to see how we can help you to improve your maths skills.

We use maths skills every day. If we improve them, we can budget better, make sense of bills, and avoid food waste.

Visit www.derbyshire.gov.uk/multiply to learn more and see how you can even get Love2Shop vouchers for participating.



Don't let maths worry you, take the next step with Multiply and find the right course to help build your confidence and ability.

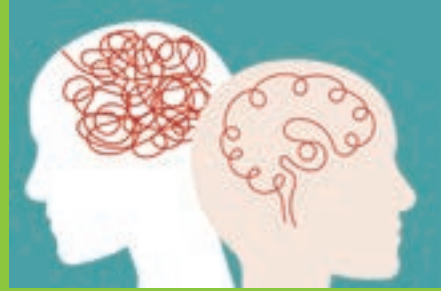
www.derbyshire.gov.uk/multiply

Brightside Mental Health

One in four of us experience mental health problems at some time in our lives.

Brightside courses are designed for anyone with mental health difficulties or emotional stress, e.g. suffering from anxiety, depression, emotional or psychological stress or isolation, low confidence and/or self-esteem.

There are a variety of courses to choose from across the county including cookery, healthy eating, gardening, poetry, creative writing and exercise. Courses include both online and centre-based options. Look out for Brightside courses in our brochures and visit www.derbyshire.gov.uk/BrightSide



Family Learning

Our family learning courses are a fun way to enjoy time together whilst learning new skills. Courses are suitable for parents/carers/grandparents and school aged children. See www.derbyshire.gov.uk/familylearning for more information. Please read the course information on Eventbrite for age suitability.



Making Choices

If you are thinking of going back to learning and maybe working towards a qualification, attending a 'Making Choices - Step into Learning' session will help you to find out your level of working and help decide on the options available.



Contact your local centre to book on to a session or email making.choices@daces.derbyshire.gov.uk

Keeping you and your loved ones safe

You may wonder why, when you book on a community learning course, you are asked to watch a video about **Prevent**, the government strategy to safeguard people and communities from the threat of extremism and terrorism. You may think that there are no terrorists or extremism in Derbyshire or that it will not affect you.

Prevent referrals in Derbyshire have increased in the past year, with Counter Terrorism Police being particularly concerned about:

- Self-initiated terrorists (S-Its)
- Online extremism
- Extreme right-wing terrorism
- Islamist terrorism

Lockdowns due to COVID-19 increased periods of isolation and many people's use of the internet. This included those who are most vulnerable to being drawn into supporting extremist beliefs or terrorism.

In Derbyshire, the highest number of referrals in this past year were:

- from the police and education providers (including DACES)
- for young people aged between 12 and 16
- in Derby City, followed by Amber Valley and then Chesterfield

Social media and messaging sites can be used to reach out to vulnerable and young people and can communicate extremist messages. You might not be a key target for those wanting to draw people into extremism and terrorism, but someone in your family might be. Here are some things to look out for:

- Changes in mood
- New found confidence
- Social withdrawal
- Outbursts of anger
- Secretive behaviours
- Change of language
- Fixated on new ideas

This is not an exhaustive list

If you are worried that someone you know may be being drawn into extremism or terrorism, talk to your tutor or any of our staff **today.**

Supporting you to learn

Tell us about your needs when enquiring or booking on a course – we will always work to meet the needs of each learner. Our Eventbrite booking form asks for details of any disability or learning difficulty you may have. If you request it, someone will be in touch to discuss your needs and ask what we can do to help your learning.

All additional support provided is based on individual assessment. For detailed information about the support that we can provide, including financial help and learning support, visit derbyshire.gov.uk/theguide or contact the centre providing your course.



Contact us

For more details about a particular course or venue,
or help with online booking:

Ashbourne:

ashbourne.ace@derbyshire.gov.uk 01629 533696

Derbyshire Eco Centre:

ecocentre@derbyshire.gov.uk 01629 533038

Matlock:

matlock.ace@derbyshire.gov.uk 01629 533225

For all other enquiries, comments or complaints contact:
adult.education@derbyshire.gov.uk

Please be aware that our centres are not open every day. If you get the answer machine please leave a message with your name and contact details and someone will call you back.

For further information or to get a copy of this brochure in a community language, on audio tape or in large print please call your local ACE centre.

The details in this brochure are correct at the time of going to print.



Education & Skills
Funding Agency

