

Love learning locally

High Peak

# Derbyshire Adult Community Learning

April to July 2023  
Courses



**Book  
Now**

# Booking, Payment and Fees

## How to book and pay

Booking and payment for all our Community Learning courses is via our Eventbrite page [derbyshireadulteducation.eventbrite.com\\*](https://www.eventbrite.com/derbyshireadulteducation)

## Help with online booking

If you struggle with online booking and payment, we are here to help. Drop into your local centre or give them a call. Centre contact details are on the back page. If you get the answer machine leave a message with your name and contact details and someone will call you back.

## Course fees explained

Many of our Community Learning courses have three different fee bands:

- Fee A: Full fee
- Fee B: Derbyshire Gold card Holders
- Fee C: Concessions for those on certain benefits/ allowances

For more details on course fees and concessions visit [www.derbyshire.gov.uk/coursefees](http://www.derbyshire.gov.uk/coursefees) or ask in your local centre.

Some courses may also have additional materials costs as indicated in the course listings. See course information on our Community Learning pages and Eventbrite for details.

## Cancellations

If you need to cancel your place on a course you have booked on to, you can do it yourself on Eventbrite, contact the organising centre or email [adult.education@derbyshire.gov.uk](mailto:adult.education@derbyshire.gov.uk).

**Please note** that if you cancel your place on a course which has fees, the percentage of the fee that covers the Eventbrite costs is non-refundable (approximately 6%).

If for any reason we have to cancel a course, the full fee is refundable. If we change a centre-based course to an online course (for safety reasons) and you wish to cancel your place, the full fee is refundable.

\* Except for courses that say to contact centre. We can help you with online booking if you need it.

# Welcome to our Summer Programme

This brochure contains our Community Learning courses in Buxton, Glossop and New Mills from April to July 2023. It includes details of our centre-based and outdoor courses and provides information on where to find out more about our online courses.

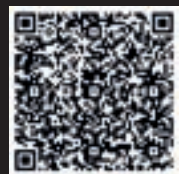
To find out more and book on a course simply go to [www.derbyshire.gov.uk/coursesearch](http://www.derbyshire.gov.uk/coursesearch) and click on Community Learning to search for a course. Simply scroll down the page to look for courses at a particular venue or use the menu on the left to search for courses by subject.

Here you will find further information about the course and a link to its Eventbrite page for full details and booking. See the back page for where to get help if you struggle with getting online.

# Buxton

Buxton ACE Centre, Victoria Park Road  
Buxton SK17 7PE

Scan the QR code to book



The Buxton team can be contacted on [buxton.ace@derbyshire.gov.uk](mailto:buxton.ace@derbyshire.gov.uk) or **01629 533385** for any additional information you require about Buxton courses or venues, or for help with online booking. The office at Buxton Fairfield ACE Centre is usually open on Tuesdays and Thursdays.

For further information on any of the courses listed below and to book visit [www.derbyshire.gov.uk/communitylearning](http://www.derbyshire.gov.uk/communitylearning)

Course Title	No. of Weeks	Day, Date and Time	Fee A	Fee B	Fee C
<b>Buxton Methodist Church</b>					
Mosaic Workshop - Summer Flowers and Nature £	1	Saturday 24 June, 10am to 4pm	£40	£35	£20
<b>Buxton, Green Man Gallery</b>					
Creative Textiles Workshop - Lutrador Lanterns £	1	Saturday 20 May, 10.30am to 3.30pm	£40	£35	£20
Craft Workshop - Garden arts and crafts £	1	Sunday 21 May, 10.30am to 3.30pm	£40	£35	£20
Art Workshop - Stunning Sunset in Acrylic £	1	Saturday 17 June, 10.30am to 3.30pm	£40	£35	£20

£ These courses have additional materials costs. See course information on our website and Eventbrite for details

# Glossop

Scan the QR code to book



Glossop ACE Centre, Talbot Street, Glossop SK13 7DG

The Glossop team can be contacted on [glossop.ace@derbyshire.gov.uk](mailto:glossop.ace@derbyshire.gov.uk) or **01629 535895** for any additional information you require about Glossop courses or venues, or for help with online booking. The office is usually open Monday to Thursday during normal office hours.

For further information on any of the courses listed below and to book visit [www.derbyshire.gov.uk/communitylearning](http://www.derbyshire.gov.uk/communitylearning)

Course Title	No. of Weeks	Day, Date and Time	Fee A	Fee B	Fee C
<b>Glossop Adult Community Education Centre</b>					
German Improvers Level 2	5	Tuesday 18 April to Tuesday 16 May, 7pm to 9pm	£53	£47	£17
Spanish Complete Beginners 1 Term 3	5	Wednesday 19 April to Wednesday 17 May, 5.45pm to 6.45pm	£28	£24	£9
Spanish Intermediate 2	5	Wednesday 19 April to Wednesday 17 May, 7pm to 9pm	£53	£47	£17
Art - Painting and Drawing for Wellbeing	5	Wednesday 19 April to Wednesday 17 May, 10am to 12noon	£57	£50	£18
Spanish Advanced	5	Thursday 20 April to Thursday 18 May, 9.30am to 11.30am	£53	£47	£17
Spanish Advanced	5	Thursday 20 April to Thursday 18 May, 7pm to 9pm	£53	£47	£17
German Advanced Level 1	5	Thursday 20 April to Thursday 18 May, 10am to 12noon	£53	£47	£17
German Advanced Level 3	5	Thursday 20 April to Thursday 18 May, 7pm to 9pm	£53	£47	£17
Jewellery - Silversmithing £	4	Thursday 20 April to Thursday 11 May, 1.30pm to 4pm	£57	£50	£18

£ These courses have additional materials costs. See course information on our website and Eventbrite for details

Course Title	No. of Weeks	Day, Date and Time	Fee A	Fee B	Fee C
<b>Glossop Adult Community Education Centre</b>					
Jewellery - Silversmithing £	4	Thursday 20 April to Thursday 11 May, 6.15pm to 8.45pm	£57	£50	£18
German Improvers Level 2	5	Tuesday 6 June to Tuesday 4 July, 7pm to 9pm	£53	£47	£17
Jewellery workshop - recycled drink can jewellery £	1	Tuesday 6 June, 10am to 4pm	£48	£42	£24
Spanish Complete Beginners 1 Term 3	5	Wednesday 7 June to Wednesday 5 July, 5.45pm to 6.45pm	£28	£24	£9
Spanish Intermediate 2	5	Wednesday 7 June to Wednesday 5 July, 7pm to 9pm	£53	£47	£17
Art - Painting and Drawing for Wellbeing	4	Wednesday 7 June to Wednesday 28 June, 10am to 12.30pm	£57	£50	£18
Spanish Advanced	5	Thursday 8 June to Thursday 6 July, 9.30am to 11.30am	£53	£47	£17
Spanish Advanced	5	Thursday 8 June to Thursday 6 July, 7pm to 9pm	£53	£47	£17
German Advanced Level 1	5	Thursday 8 June to Thursday 6 July, 10am to 12noon	£53	£47	£17
German Advanced Level 3	5	Thursday 8 June to Thursday 6 July, 7pm to 9pm	£53	£47	£17
Jewellery - Silversmithing £	3	Thursday 8 June to Thursday 22 June, 1pm to 4pm	£57	£50	£18
Jewellery - Silversmithing £	3	Thursday 8 June to Thursday 22 June, 6pm to 9pm	£57	£50	£18
Jewellery workshop - silver jewellery taster day £	1	Tuesday 13 June, 10am to 4pm	£48	£42	£24
Spanish Beginners - Taster £	1	Tuesday 11 July, 6pm to 7.30pm	£0	£0	£0

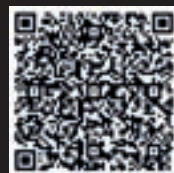
£ These courses have additional materials costs. See course information on our website and Eventbrite for details

Course Title	No. of Weeks	Day, Date and Time	Fee A	Fee B	Fee C
<b>Glossop (Higher Plainsteads Farm)</b>					
Dry Stone Walling Taster	1	Saturday 15 April, 2pm to 5pm	£17	£15	£6
Dry Stone Walling Taster	1	Saturday 15 April, 10am to 1pm	£17	£15	£6
Family Learning - Dry Stone Walling Taster	1	Sunday 16 April, 10am to 1pm	£0	£0	£0
Dry Stone Walling Weekend - Beginners	1	Saturday 13 May to Sunday 14 May, 10am to 4pm	£67	£60	£21
Dry Stone Walling Taster	1	Saturday 10 June, 10am to 1pm	£17	£15	£6
Introduction to Keeping Sheep	1	Saturday 1 July, 10am to 1pm	£33	£29	£10
Sheep to Wool Crafts	1	Saturday 1 July, 2pm to 5pm	£17	£15	£6
Dry Stone Walling Weekend - Beginners	1	Saturday 15 July to Sunday 16 July, 10am to 4pm	£67	£60	£21
Upcycled Pallet Projects	1	Saturday 22 July, 10am to 4pm	£33	£29	£10



# New Mills

Scan the QR code to book



For additional information about New Mills courses or venues, or for help with online booking contact the Glossop team on [glossop.ace@derbyshire.gov.uk](mailto:glossop.ace@derbyshire.gov.uk) or **01629 535895**. The office is usually open Monday to Thursday during normal office hours.

For further information on any of the courses listed below and to book visit [www.derbyshire.gov.uk/communitylearning](http://www.derbyshire.gov.uk/communitylearning)

Course Title	No. of Weeks	Day, Date and Time	Fee A	Fee B	Fee C
<b>New Mills, Town Hall</b>					
Yoga Improvers	5	Wednesday 19 April to Wednesday 24 May, 7pm to 8.30pm	£43	£38	£13
Yoga Improvers	5	Wednesday 7 June to Wednesday 5 July, 7pm to 8.30pm	£43	£38	£13
<b>New Mills, Spring Banks Arts Centre</b>					
Yoga for Health	5	Tuesday 18 April to Tuesday 16 May, 1.15pm to 2.45pm	£43	£38	£13
Art - Painting and Drawing for Wellbeing	5	Friday 21 April to Friday 19 May, 11.30am to 1.30pm	£57	£50	£18
Yoga for Health	5	Tuesday 6 June to Tuesday 4 July, 1.15pm to 2.45pm	£43	£38	£13
Art - Painting and Drawing for Wellbeing	4	Friday 9 June to Friday 30 June, 11.30am to 2pm	£57	£50	£18



# Make friends with numbers

## Multiply - courses to help adults make things add up!

If you're aged 19 and over and don't have maths GCSE at grade C (or equivalent), you can access free numeracy courses through Multiply to build your confidence with numbers and maybe even gain a qualification.



Good numeracy skills unlock job opportunities and lead to higher wages or prepare you for further study. They also help in everyday life, such as assisting children with homework and budgeting money.

There are courses for beginners to more advanced courses such as GCSE maths, functional skills qualifications, or equivalent. Online tutorials and content are also available, so you'll be able to learn at a pace that suits you.



## How Multiply can help you?

Does the thought of needing to do maths at work or home make you anxious?

You aren't alone, as 57% of England's working age adult population is estimated to have low numeracy skills.

Join our Multiply programme to see how we can help you to improve your maths skills.

We use maths skills every day. If we improve them, we can budget better, make sense of bills, and avoid food waste.

Visit [www.derbyshire.gov.uk/multiply](http://www.derbyshire.gov.uk/multiply) to learn more and see how you can even get Love2Shop vouchers for participating.



Don't let maths worry you, take the next step with Multiply and find the right course to help build your confidence and ability.

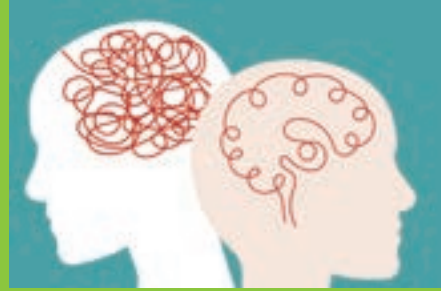
[www.derbyshire.gov.uk/multiply](http://www.derbyshire.gov.uk/multiply)

# Brightside Mental Health

One in four of us experience mental health problems at some time in our lives.

Brightside courses are designed for anyone with mental health difficulties or emotional stress, e.g. suffering from anxiety, depression, emotional or psychological stress or isolation, low confidence and/or self-esteem.

There are a variety of courses to choose from across the county including cookery, healthy eating, gardening, poetry, creative writing and exercise. Courses include both online and centre-based options. Look out for Brightside courses in our brochures and visit [www.derbyshire.gov.uk/BrightSide](http://www.derbyshire.gov.uk/BrightSide)



## Family Learning

Our family learning courses are a fun way to enjoy time together whilst learning new skills. Courses are suitable for parents/carers/grandparents and school aged children. See [www.derbyshire.gov.uk/familylearning](http://www.derbyshire.gov.uk/familylearning) for more information. Please read the course information on Eventbrite for age suitability.



## Making Choices

If you are thinking of going back to learning and maybe working towards a qualification, attending a 'Making Choices - Step into Learning' session will help you to find out your level of working and help decide on the options available.



Contact your local centre to book on to a session or email [making.choices@daces.derbyshire.gov.uk](mailto:making.choices@daces.derbyshire.gov.uk)

# Keeping you and your loved ones safe

You may wonder why, when you book on a community learning course, you are asked to watch a video about **Prevent**, the government strategy to safeguard people and communities from the threat of extremism and terrorism. You may think that there are no terrorists or extremism in Derbyshire or that it will not affect you.

Prevent referrals in Derbyshire have increased in the past year, with Counter Terrorism Police being particularly concerned about:

- Self-initiated terrorists (S-Its)
- Online extremism
- Extreme right-wing terrorism
- Islamist terrorism

Lockdowns due to COVID-19 increased periods of isolation and many people's use of the internet. This included those who are most vulnerable to being drawn into supporting extremist beliefs or terrorism.

In Derbyshire, the highest number of referrals in this past year were:

- from the police and education providers (including DACES)
- for young people aged between 12 and 16
- in Derby City, followed by Amber Valley and then Chesterfield

Social media and messaging sites can be used to reach out to vulnerable and young people and can communicate extremist messages. You might not be a key target for those wanting to draw people into extremism and terrorism, but someone in your family might be. Here are some things to look out for:

- Changes in mood
- New found confidence
- Social withdrawal
- Outbursts of anger
- Secretive behaviours
- Change of language
- Fixated on new ideas

This is not an exhaustive list

**If you are worried that someone you know may be being drawn into extremism or terrorism, talk to your tutor or any of our staff **today**.**

# Supporting you to learn

Tell us about your needs when enquiring or booking on a course – we will always work to meet the needs of each learner. Our Eventbrite booking form asks for details of any disability or learning difficulty you may have. If you request it, someone will be in touch to discuss your needs and ask what we can do to help your learning.

All additional support provided is based on individual assessment. For detailed information about the support that we can provide, including financial help and learning support, visit [derbyshire.gov.uk/theguide](http://derbyshire.gov.uk/theguide) or contact the centre providing your course.



## Contact us

For more details about a particular course or venue,  
or help with online booking:

**Buxton**

[buxton.ace@derbyshire.gov.uk](mailto:buxton.ace@derbyshire.gov.uk) 01629 533385

**Glossop and New Mills**

[glossop.ace@derbyshire.gov.uk](mailto:glossop.ace@derbyshire.gov.uk) or 01629 535895

For all other enquiries, comments or complaints contact:  
[adult.education@derbyshire.gov.uk](mailto:adult.education@derbyshire.gov.uk)

Please be aware that our centres are not open every day. If you get the answer machine please leave a message with your name and contact details and someone will call you back.

For further information or to get a copy of this brochure in a community language, on audio tape or in large print please call your local ACE centre.

The details in this brochure are correct at the time of going to print.



Education & Skills  
Funding Agency

