

Integrated care system assessments webinar

Amanda Williams

**Interim Director of integration, inequalities and
improvement**

Monday 17 April

Meet the webinar team

- **Helen Rawlings**, Deputy Director of Integration, Inequalities and Improvement
- **Matt Tait**, Head of Acute Policy
- **Dominique Black**, Strategy Manager
- **Sam Wallace**, Provider Engagement Lead
- **Sarah Cowley-Beadman**, Provider Engagement Improvement Lead
- **Abigail Walker**, Communications and Engagement Manager
- **Neil Smith**, Senior Engagement and Communications Adviser
- **Steph Lowe**, Events Officer

CQC's April webinar series

13 April (watch on our YouTube channel)

Local Authority assessments

This webinar will focus on our approach to assessing local authorities and what this means for you.

13 April (watch on our YouTube channel)

CQC's new regulatory approach

This webinar we'll be updating on our implementation timeline for our new regulatory approach and new provider portal.

17 April (today)

Integrated care system assessments

This webinar will update on our approach to assessing integrated care systems

What we will cover today

- CQC's new powers to assess care at a system level
- How we've developed our approach to ICS assessments
- What we'll assess when looking at ICSs
- How we're implementing our approach
- Q&A
- Next steps



Our approach to assessing integrated care systems

New powers

CQC has new roles:



- The Health and Care Act gives CQC a role in reviewing **integrated care systems**
- It also gives CQC a new duty to assess how **local authorities** are meeting their social care duties under part 1 of the Care Act

These will allow us to look more effectively at how care provided in a local system is improving outcomes and reducing inequalities.

We've engaged over the last year on how we'll do this. We want to bring together a view of quality across a local area and put people at the centre of driving improvement in care.

A single assessment framework

Our framework will assess providers, local authorities and integrated care systems with a consistent set of key themes, from registration through to ongoing assessment

Expressed as “We” statements; the standards against which we hold providers, Local Authorities and Integrated Care Systems to account

People’s experience, feedback from staff and leaders, feedback from partners, observation, processes, outcomes

Data and information specific to the scope of assessment, delivery model or population group



Working in partnership

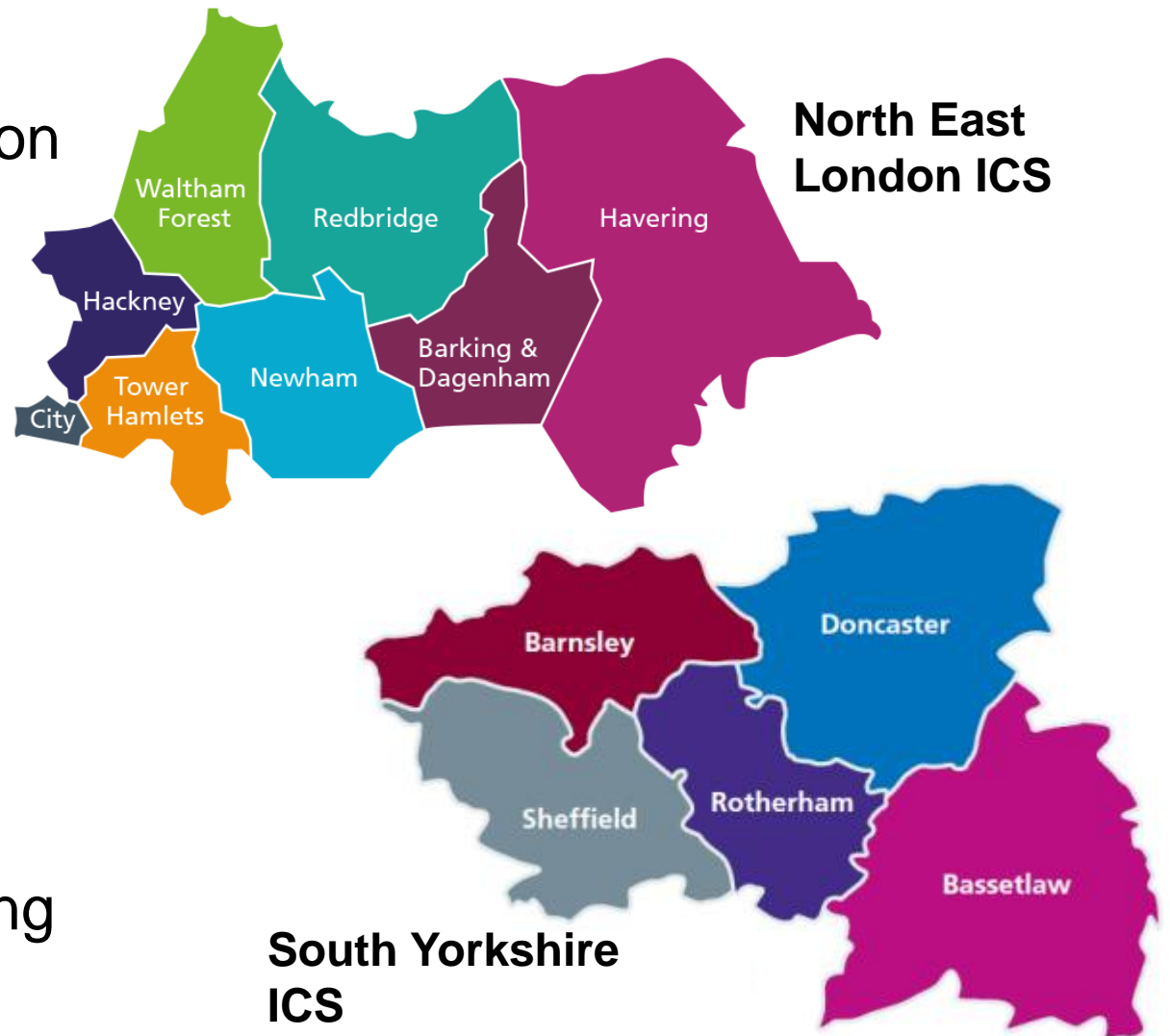
To design our approach and our single assessment framework we are working in partnership with:

- People who use health and social care services and their families
- Providers
- Integrated care systems
- Local government organisations
- Department of Health and Social Care (DHSC)
- Department of Levelling Up, Housing and Communities (DLUHC)
- NHS England
- other bodies representing providers and strategic partners.

Test and learn activities – what we did

Integrated care systems (ICSs)

- Worked with two ICSs; North East London and South Yorkshire
- Looked at all three themes
 - leadership
 - integration
 - quality and safety
- Covered all 16 quality statements
- Reported on findings
- Supported us to identify areas for learning and refining



CQC scope: Integrated care systems

The focus of our integrated care system assessments will be across a subset of our quality statements:

Leadership

- Shared direction and culture
- Capable, compassionate and inclusive leaders
- Governance and assurance
- Partnerships and communities
- Learning, improvement and innovation
- Environmental sustainability
- Workforce equality, diversity and inclusion
- Freedom to Speak Up

Integration

- Safe systems, pathways and transitions
- Care provision, integration and continuity
- How staff, teams and services work together

Quality and safety

- Learning culture
- Supporting people to live healthier lives
- Safe and effective staffing
- Safeguarding
- Equity in access
- Equity in experiences and outcomes

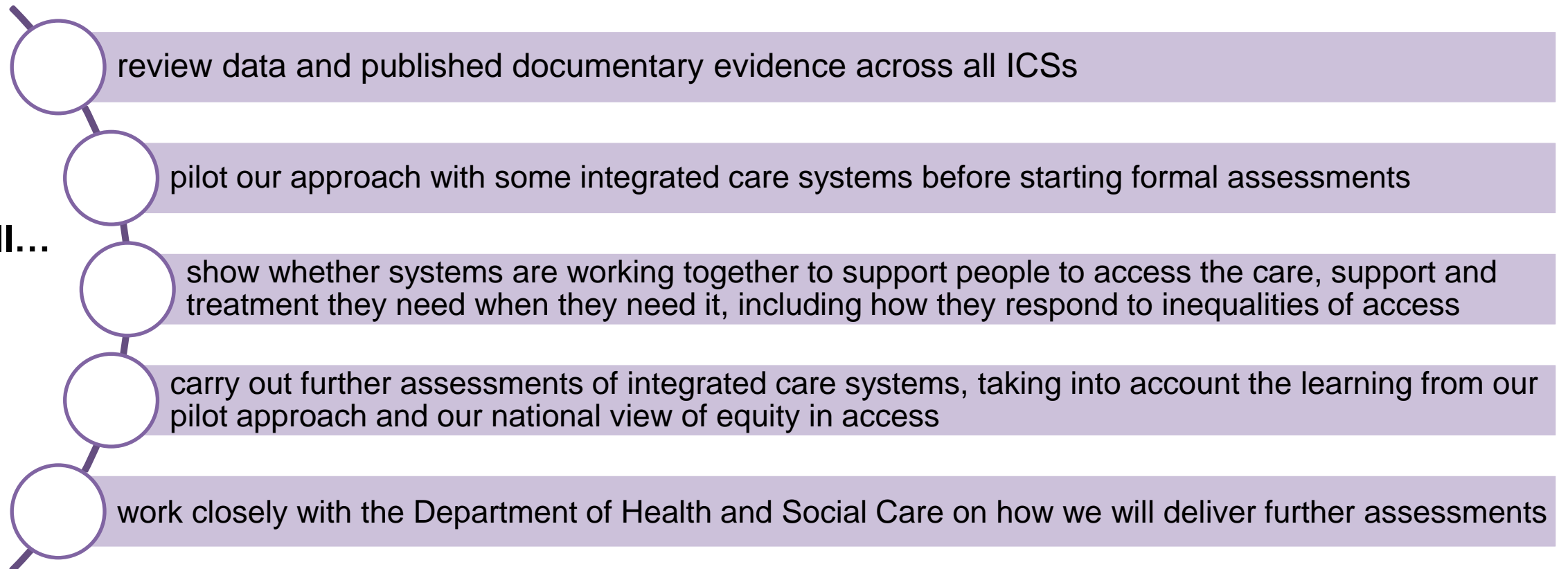
Our approach from April 2023



From this month until July 2023, for integrated care systems, we have begun forming a national view of performance, initially focused on themes in one quality statement:

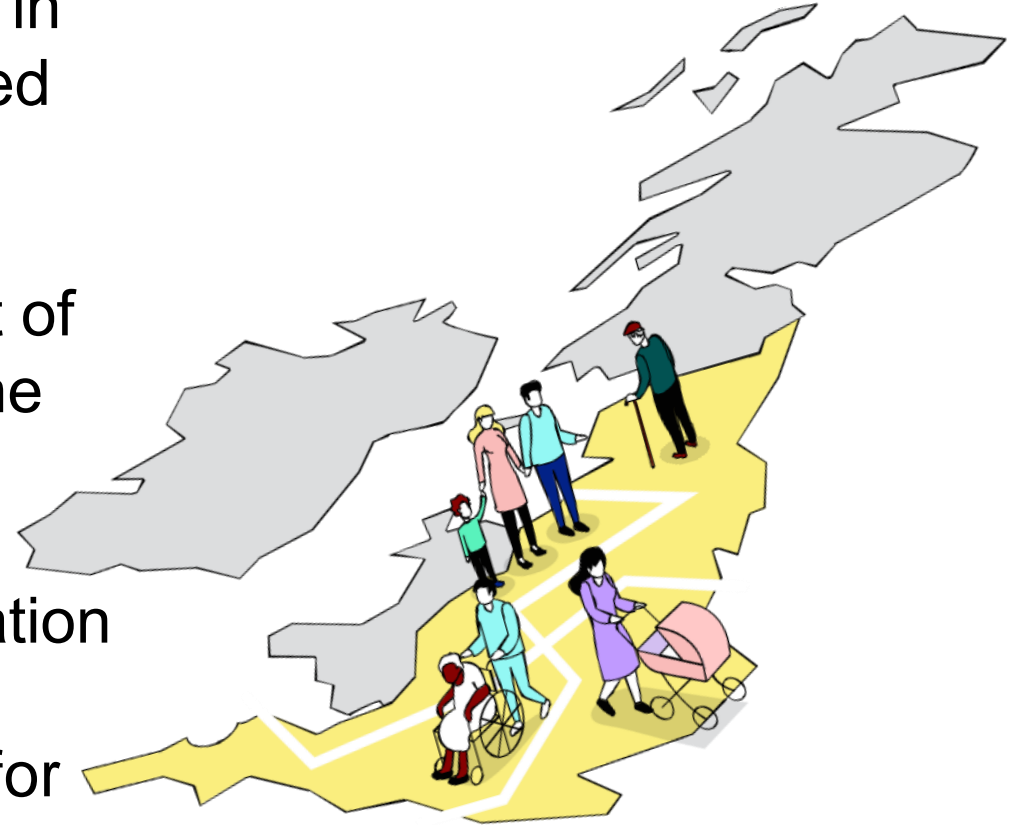
- Equity in access

We will...



National assessment of Equity in Access

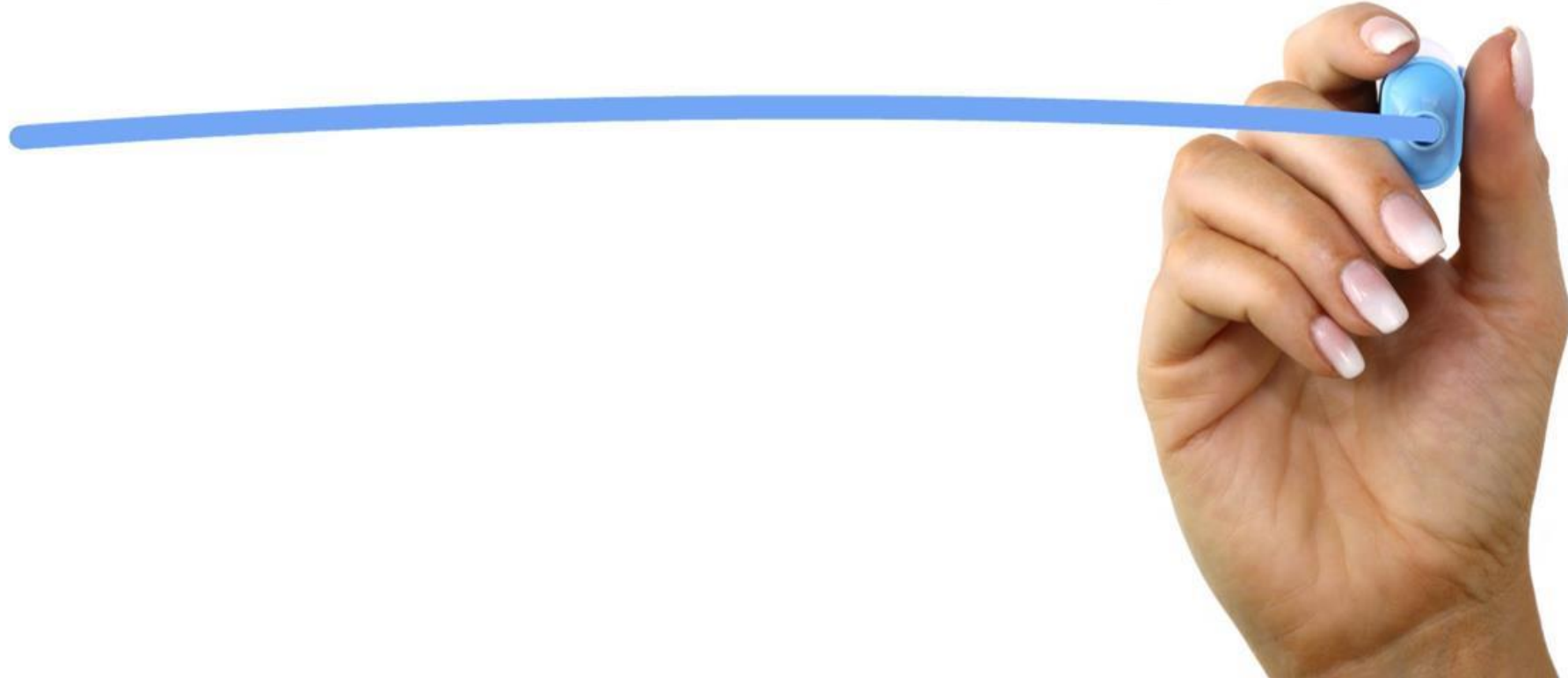
- We're beginning a national review of the equity in access quality statement across all 42 Integrated Care Systems
- The quality statement, 'Equity in Access' is part of CQC's Single Assessment Framework within the Quality and Safety theme
- We'll review publicly available data and information
- We've contacted ICSs offering the opportunity for them to take part in focus groups to discuss this quality statement



Integrated care system pilots

- Pilots for ICS assessments will take place from Autumn 2023
- They'll involve testing against a sub-set of quality statements in our single assessment framework, tailored to integrated care systems
- We'll work closely with our expert advisory group, integrated care systems and stakeholders to test and evaluate our work
- The learning and evaluation will conclude with a final published approach to start our formal baseline assessments of all integrated care systems

QUESTIONS



How to stay up to date



Get involved on our digital platform

Continue the conversation

Sign up here: <https://cqc.citizenlab.co/en-GB/>



Provider bulletin and blogs

- Sign up for your sector bulletin here:
<https://www.cqc.org.uk/news/newsletters-alerts/email-newsletters-cqc>
- All blogs can be found on our medium page:
<https://medium.com/@CareQualityComm>



CQC Twitter account

For the most up to date, immediate information

Follow: @CQCProf



CQC Connect

Find all of our latest podcast episodes here:

<https://linktr.ee/cqcconnect>

