



THE LION ALLIANCE PRESENTS
**LION LEADERSHIP
COURSES 2026-27**

COURSE RUNS:
OCT 2026 –
JULY 2027

SIGN UP

To sign-up, please contact: admin@thelionalliance.co.uk



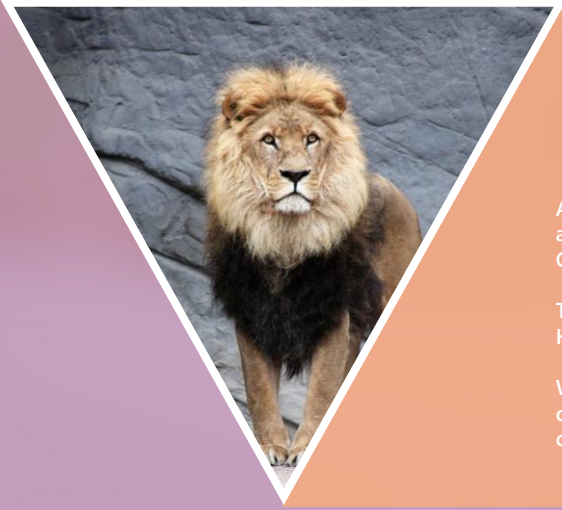
THE LION ALLIANCE

A Primary/Secondary Partnership

www.thelionalliance.co.uk
admin@thelionalliance.co.uk
lion_alliance
thelionalliancepartnership
the_lion_alliance



WHY LION LEADERSHIP?



NETWORKING & ENGAGEMENT IN YOUR LOCAL SCHOOL CONTEXT

As a large Alliance we are proud of the varied and strong expertise we boast across our Primary and Secondary phases, including Independent and State schools and spreading across Coventry, Kenilworth and Rugby.

This local knowledge ensures sessions are relevant and grounded in *your* everyday experience. Hosts plan sessions independently, bringing their personal expertise and examples to the fore.

We operate a combined model of face-to-face and virtual sessions, ensuring you have opportunities to meet colleagues from across the Alliance and providing invaluable networking opportunities.

PROFESSIONAL DEVELOPMENT AIMED AT NURTURING CAREER PROGRESSION

At the core of our values is a desire to support *all* teachers to be the very best they can be, whatever stage of their career. We have therefore designed four discrete strands of Lion Leadership ensuring there is not only natural progression from one stage to the next, but also something on offer for everyone whether you're new to middle leadership or aspiring to progress to Deputy Headship.

New this year we also have the Associate Leaders strand, supporting associate staff in developing their leadership skills relevant to non-teaching roles in schools.



WHAT PATHWAYS DO WE OFFER?

ASPIRING MIDDLE LEADERS

WHO IS THIS FOR?

Best suited to teaching staff (Primary or Secondary) who would like to step into middle leadership or who have very recently taken on additional responsibility. This may be as TLR holder, Pastoral Lead, Head of Department, Year Group Lead or Subject Lead.

WHAT CAN YOU EXPECT?

- 6 Virtual 'Peer Learning Group' sessions across 3 terms (Autumn, Spring, Summer) covering a variety of leadership topics.
- 1 'Project Introduction' session in the Autumn.
- 1 'Project Review' session in the Summer.
- **LEADERSHIP SELF AUDIT**
Review your strengths and weaknesses so you can see how you've progressed.
- **PROJECT**
Plan and action an ongoing project across the year that suits you and your local school needs and context.
- **IN SCHOOL COACH**
Work with an in-school coach to assist with developing your understanding and skills.

£150 LION ALLIANCE MEMBERS

£200 NON - LION ALLIANCE MEMBERS

*prices listed are per person

MIDDLE LEADERS

WHO IS THIS FOR?

Best suited to teaching staff (Primary or Secondary) who are currently Middle Leaders (TLR holder, Pastoral Lead, Head of Department, Year Group Lead or Subject Lead) and would like opportunities to improve their leadership skills, build networks with other Middle Leaders and aspire to Senior Leadership.

WHAT CAN YOU EXPECT?

- 6 Virtual 'Peer Learning Group' sessions across 3 terms (Autumn, Spring, Summer) covering a variety of leadership topics.
- 1 'Project Introduction' session in the Autumn.
- 1 'Project Review' session in the Summer.
- **360 REVIEW**
An in-depth 360 review of your leadership qualities, provided by your locally nominated colleagues.
- **PROJECT**
Plan and action an ongoing project across the year that suits you and your local school needs and context.
- **IN SCHOOL COACH**
Work with an in-school coach to assist with developing your understanding and skills.

£200 LION ALLIANCE MEMBERS

£250 NON - LION ALLIANCE MEMBERS

*prices listed are per person

SENIOR LEADERS

WHO IS THIS FOR?

Best suited to teaching staff (Primary or Secondary) who are currently Senior Leaders (part of a senior team, Assistant Headteacher) who like opportunities to improve their leadership skills, build networks with other Senior Leaders and aspire to Deputy Headship.

WHAT CAN YOU EXPECT?

- 6 Virtual 'Peer Learning Group' sessions across 3 terms (Autumn, Spring, Summer) covering a variety of leadership topics.
- 1 'Project Introduction' session in the Autumn.
- 1 'Project Review' session in the Summer.
- **360 REVIEW**
An in-depth 360 review of your leadership qualities, provided by your locally nominated colleagues.
- **PROJECT**
Plan and action an ongoing project across the year that suits you and your local school needs and context.
- **IN SCHOOL COACH**
Work with an in-school coach to assist with developing your understanding and skills.

£250 LION ALLIANCE MEMBERS

£300 NON - LION ALLIANCE MEMBERS

*prices listed are per person

ASSOCIATE LEADERS

WHO IS THIS FOR?

Best suited to associate staff (non-teaching roles in school) who would like to improve their leadership and management skills, as they make steps into more senior roles.

WHAT CAN YOU EXPECT?

- 6 Virtual 'Peer Learning Group' sessions across 3 terms (Autumn, Spring, Summer) covering a variety of leadership topics.
- 1 'Project Introduction' session in the Autumn.
- 1 'Project Review' session in the Summer.
- **LEADERSHIP SELF AUDIT**
Review your strengths and weaknesses so you can see how you've progressed.
- **PROJECT**
Plan and action an ongoing project across the year that suits you and your local school needs and context.
- **IN SCHOOL COACH**
Work with an in-school coach to assist with developing your understanding and skills.

£150 LION ALLIANCE MEMBERS

£200 NON - LION ALLIANCE MEMBERS

*prices listed are per person

FREQUENTLY ASKED QUESTIONS

I work part-time. Can I join the Lion Leadership programme?

Yes – we welcome part-time staff members as well as full-time!

Be aware that sessions may be arranged for any day of the working week so it's important that you understand that we can't arrange these around your specific working pattern. The course does require commitment, and we would expect you join all sessions that are arranged, where possible.

Why do a Lion Leadership course and not an NPQ?

The new suite of NPQs on offer are fantastic. However, the NPQ courses are more theoretical and can feel a little removed from your own context. Our Leadership courses are designed around our partners and all hosts work in local schools. They are therefore able to bring current, relevant and local context to each facilitated session.

What happens if I miss or can't attend a session?

Commitment to the whole course is really important; however sometimes illness or unforeseen circumstances can prevent attendance. In this instance, please ensure your host, school and the Alliance know you'll be unable to attend and that you will endeavour to catch up with the content at a later date. All session materials are shared after the event.

How are sessions held – in person or virtual?

We operate on a hybrid model with elements being in-person and others virtual. The majority of sessions are virtual; in particular the 'Peer Learning Group' sessions focusing on aspects of leadership. We do have in-person networking opportunities as well, focusing on the introduction and review of your ongoing project.

CONTACT US



FOR MORE INFORMATION
PLEASE CONTACT:

- ▶ **SEAN TOWNSEND** – s.townsend@finhampark.co.uk
LION ALLIANCE ASSISTANT
- ▶ **ALEXANDRA FORD** – a.ford@finhampark.co.uk
HEAD OF THE LION ALLIANCE



THE LION ALLIANCE

A Primary/Secondary Partnership

www.thelionalliance.co.uk
admin@thelionalliance.co.uk
lion_alliance
thelionalliancepartnership
the_lion_alliance

