

# RE Spring Bulletin 2022



## Key Dates for RE Festivals Spring 2022

Religious Tradition/Worldview	Key Dates
<b>Baha'i</b>	21 <sup>st</sup> March Naw-Ruz 21 <sup>st</sup> April- 2 <sup>nd</sup> May Ridvan
<b>Buddhist Traditions</b>	16 <sup>th</sup> January Shinran Mem. Day 25 <sup>th</sup> January Honen Mem. Day 15 <sup>th</sup> February Parinirvana /Nirvana Day 16 <sup>th</sup> February Magha Puja 3 <sup>rd</sup> March Losar (Nepal) 8 <sup>th</sup> April Hanamatsuri 13 <sup>th</sup> -15 <sup>th</sup> April Songkran
<b>Christianity</b>	3 <sup>rd</sup> -10 <sup>th</sup> January Methodist Covenant 6 <sup>th</sup> January Epiphany [Anglican/RC] 6 <sup>th</sup> January Theophany [Orthodox] 6 <sup>th</sup> /7 <sup>th</sup> Christmas Eve/Day [Orthodox] 9 <sup>th</sup> January Baptism of Christ [Anglican] 8 <sup>th</sup> January Baptism of the Lord [RC] 18 <sup>th</sup> – 25 <sup>th</sup> January Week of Prayer for Christian Unity 2 <sup>nd</sup> February Presentation of Christ in the Temple /Candlemas 1 <sup>st</sup> March Shrove Tuesday 2 <sup>nd</sup> March Ash Wednesday 2 <sup>nd</sup> March– 15 <sup>th</sup> April Lent 7 <sup>th</sup> March Great Lenten Fast begins [Orthodox] 19 <sup>th</sup> March St Joseph 25 <sup>th</sup> March The Annunciation [Anglican/Orthodox/RC] 27 <sup>th</sup> March Mothering Sunday 3 <sup>rd</sup> April Passion Sunday 10 <sup>th</sup> April Palm Sunday 11 <sup>th</sup> April – 18 <sup>th</sup> April Holy Week 14 <sup>th</sup> April Maundy Thursday 2 <sup>nd</sup> April Good Friday 17 <sup>th</sup> April Holy Saturday 18 <sup>th</sup> April Easter Sunday 24 <sup>th</sup> April Pascha [Orthodox]
<b>Hindu Traditions</b>	12 <sup>th</sup> January Birthday of Swami Vivekananda 13 <sup>th</sup> /14 <sup>th</sup> January Lohri / Makar Sankranti / Pongal 4 <sup>th</sup> /5 <sup>th</sup> February Sarasvati Puja /Vasant Panchami 28 <sup>th</sup> February/1 <sup>st</sup> March Mahashivratri 17 <sup>th</sup> /18 <sup>th</sup> March Holi 10 <sup>th</sup> April Rama Navami 16 <sup>th</sup> /17 <sup>th</sup> April Hanuman Jayanti
<b>Islam</b>	1 <sup>st</sup> March The Prophet's Night Journey and Ascent into Heaven [Isra and Mi'raj] 19 <sup>th</sup> March The Night of Forgiveness [Lailat-ul Bara'ah] 2 <sup>nd</sup> April – 1 <sup>st</sup> May Ramadan 24 <sup>th</sup> April Night of Power [Lailat-ul-Qadr]
<b>Judaism*</b>	17 <sup>th</sup> January Tu B'Shevat 17 <sup>th</sup> March Purim 16 <sup>th</sup> - 23 <sup>rd</sup> April Passover /Pesach
<b>Sikhi</b>	5 <sup>th</sup> January Birthday of Guru Gobind Singh 14 <sup>th</sup> March New Years Day 18 <sup>th</sup> – 20 <sup>th</sup> March Hola Mohalla 13 <sup>th</sup> April Vaisakhi/ Baisakhi
<b>Other</b>	1 <sup>st</sup> January New Year's Day /Hogmanay 16 <sup>th</sup> January World Religion Day 27 <sup>th</sup> January Holocaust Mem. Day 14 <sup>th</sup> February St Valentine's Day

## Important Announcement Regarding the CWAS

# Coventry and Warwickshire

## Agreed Syllabus for Religious Education

2017–2022

We are aware some of you are feeling alarmed the CWAS will change at the end of this academic year. We are aware that this would be less than suitable during an ongoing pandemic and so have a plan in place to extend the current syllabus for at least another year and possibly two years. This will be confirmed in due course but we encourage our local RE teachers and subject leaders to not worry about this issue as we approach the end of 2021-2022.

\*\*\*\*\*



## Ongoing SACRE Support for RE

### 1) Guidance for Teaching RE 2021-2022

We issued guidance for teaching RE in 2021-2022 in June 2021. You can find this on the Warwickshire SACRE website in Section 6: Useful Resources

<https://schools.warwickshire.gov.uk/education-resources/standing-advisory-council-religious-education-sacre/3>

### 2) SACRE Website

Don't forget that the Warwickshire SACRE website is your go-to place for some key documents to support your RE:

- The Coventry & Warwickshire Agreed Syllabus
- SACRE Suggested List of Visits and Visitors

- New Guidance for RE Visits and Visitors (including Content Grids for all six major faith traditions)
- 'Do and Don't' Documents for all 6 major religions and Humanism
- All past CPD materials (including Balanced RE & Worldviews Approach to RE, plus new to RE subject leadership)
- Westhill RE Subject Knowledge films and corresponding documents
- Past RE Bulletins

You will find the website here: <https://schools.warwickshire.gov.uk/education-resources/standing-advisory-council-religious-education-sacre/3>

The website is structured as follows:

1. Coventry & Warwickshire Agreed Syllabus
  - The Coventry & Warwickshire Agreed Syllabus (CWAS)
2. SACRE Additional Units for CWAS
  - Additional units for the CWAS written by SACRE members
  - Peace & Reconciliation Units (Primary)
3. Non-Statutory Units of Work for CWAS
  - RE Today Non-Statutory Units for use with the CWAS
4. RE Today Support Materials
  - Launch materials
  - Sample Long Term Plan
5. Additional Materials to Support the CWAS
  - Schemes of Work Order Form (RE Today)
6. Useful Resources
  - Guidance for Teaching RE in 2021-2022
  - SACRE Suggested List of Visits and Visitors (contact information)
  - Supporting Learning Through RE Visits Guidance
  - CWAS Content Grids for six major traditions
  - RE Visit Booking Form
  - RE Visit Evaluation Form
  - Do and Don't Documents (major six religions plus Humanism)
  - RE Pedagogies CPD for RE Subject Leaders
  - RIFF Religion & Climate Change resources
  - New to RE Subject Leadership
  - Anti-Racist RE Resources (NATRE)
  - Religious Community Covid Pandemic Responses
7. RE Bulletins

- All prior RE bulletins since 2019
8. RE Subject Leader Network Meeting Materials (2018-2021)
- All prior CPD including presentation slides and resources
  - Including:
    - RE: Philosophy & Ethics
    - Theologies of Reading: Approaches to Sacred Texts
    - RE for Well-Being
    - Teaching Non-Religious Worldviews
    - Balanced Multidisciplinary RE
    - Teaching RE Vocabulary
    - Help! I'm the RE Subject Leader
    - Promoting Good RE in Your School
    - A Worldviews Approach to Teaching RE
    - Planning a Unit from the CWAS
9. SACRE RE Subject Knowledge Enhancement Programme
- Films for Islam and Sikhi
  - Coming soon, films for Judaism and Hindu Traditions
  - Road Maps with suggested teaching approaches and resources
  - Photo Packs
  - Guidance for using materials for CPD in school

You will need the password in order to access these documents. If you don't have it, please email [sacre@warwickshire.gov.uk](mailto:sacre@warwickshire.gov.uk) to request it. You must be from a Coventry and Warwickshire school.

### 3) SACRE RE CPD

#### Online SACRE CPD

Focus	Date	Speaker
Deep Dives in RE  Suitable for secondary colleagues	Thursday 6 <sup>th</sup> January 2022 4.00-5.00pm  <a href="https://www.eventbrite.com/e/deep-dives-in-re-secondary-tickets-198802984077">https://www.eventbrite.com/e/deep-dives-in-re-secondary-tickets-198802984077</a>	Alice Thomas, Head of Philosophy & Ethics at Southam College (recently judged as Outstanding by Ofsted)

<p>Lenses: Multidisciplinary, Balanced RE (Ofsted: 'Ways of Knowing': theology, philosophy and human and social sciences)</p> <p>Suitable for both primary and secondary colleagues</p>	<p>Thursday 20<sup>th</sup> January 2022 4.00-6.00pm</p> <p>Microsoft Teams</p> <p><a href="https://www.eventbrite.com/e/multidisciplinary-balanced-re-ofsted-ways-of-knowing-tickets-164971902401">https://www.eventbrite.com/e/multidisciplinary-balanced-re-ofsted-ways-of-knowing-tickets-164971902401</a></p>	<p>Jennifer Jenkins RE Facilitator, Coventry &amp; Warwickshire</p>
<p>Academically Rigorous RE: Two Key Drivers for High Quality RE-Encounter and Enquiry</p> <p>Suitable for both primary colleagues</p>	<p>Thursday 10<sup>th</sup> March 4.00-5.30pm</p> <p>Microsoft Teams</p> <p><a href="https://www.eventbrite.com/e/academically-rigorous-re-high-quality-re-encounter-and-enquiry-tickets-166024821711">https://www.eventbrite.com/e/academically-rigorous-re-high-quality-re-encounter-and-enquiry-tickets-166024821711</a></p>	<p>Jennifer Jenkins RE Facilitator for Coventry &amp; Warwickshire</p>
<p>Teaching the Breadth of Christianity</p> <p>Suitable for primary and secondary colleagues</p>	<p>Thursday 31<sup>st</sup> March 2021 4.00-5.30pm</p> <p><a href="https://www.eventbrite.com/e/teaching-the-breadth-of-christianity-tickets-189558944907">https://www.eventbrite.com/e/teaching-the-breadth-of-christianity-tickets-189558944907</a></p>	<p>Jennifer Jenkins RE Facilitator for Coventry &amp; Warwickshire</p>
<p>Knowledge Organisers in RE</p> <p>Suitable for primary colleagues</p>	<p>Thursday 5<sup>th</sup> May 2022 4.00-5.30pm</p> <p><a href="https://www.eventbrite.com/e/academically-rigorous-re-using-knowledge-organisers-in-re-tickets-166025228929">https://www.eventbrite.com/e/academically-rigorous-re-using-knowledge-organisers-in-re-tickets-166025228929</a></p>	<p>Debbie Yeomans Stage 2 Culham St Gabriel's RE Leadership Programme</p>
<p>RE for EYFS</p> <p>Suitable for Early Years &amp; Primary teachers/ RE Subject Leaders</p>	<p>Thursday 26<sup>th</sup> May 2022 4.00-5.30pm</p> <p>Microsoft Teams</p> <p><a href="https://www.eventbrite.com/e/re-for-eyfs-tickets-189575935727">https://www.eventbrite.com/e/re-for-eyfs-tickets-189575935727</a></p>	<p>Tracy Westlake Stage 2 Culham St Gabriel's RE Leadership Programme</p>
<p>Academically Rigorous RE: Six Core Concepts for Pupils to Know in RE for Better Transition</p>	<p>Thursday 16<sup>th</sup> June 2022 4.00-5.30pm</p> <p>Microsoft Teams</p> <p><a href="https://www.eventbrite.com/e/academically-rigorous-re-six-core-concepts-for-pupils-to-know-in-re-tickets-165131724433">https://www.eventbrite.com/e/academically-rigorous-re-six-core-concepts-for-pupils-to-know-in-re-tickets-165131724433</a></p>	<p>Jennifer Jenkins RE Facilitator for Coventry &amp; Warwickshire</p>

from Primary to Secondary		
Suitable for primary colleagues		



### **South Warwickshire NATRE Group**

This group has been established by Karen Steele, Subject Lead for Religious Studies at Stratford Girls' Grammar School. You are welcome to attend if you are not based in South Warwickshire.

Paul Smalley from Edge Hill University has kindly agreed to lead the next meeting of this group on 9<sup>th</sup> March 2022 at 4pm, focusing on the Ofsted RE Research Review. To register email:

Karen has recently produced some materials for GCSE Islam using text to enhance learning. You can read her blog here: <https://www.reonline.org.uk/2021/11/02/beyond-the-proof-text/?fbclid=IwAR3vNY5UrmICV3ZoSINK9bakJ0xMVXIMVXD8zOm5DD7w8iqy90H7f4-njE>

and the resources are here: <https://www.edgehill.ac.uk/education/text-and-story-re-summer-school/>



## Local RE Teach Meet

We are excited to announce that we are holding our first ever local RE Teach Meet on **Thursday 3<sup>rd</sup> February 2022** 4.00-6.00pm. This will feature short ten-minute presentations from primary and secondary colleagues on various elements of good practice in RE. Sign up to find out some great ideas for enhancing your RE provision from people in the classroom:

<https://www.eventbrite.com/e/re-teach-meet-in-coventry-warwickshire-tickets-221398347417>

## Face-to-Face SACRE CPD



Our Westhill RE Subject Knowledge Enhancement Programme continues in 2022, with our final two sessions taking place:

Focus	Date	Speaker
Westhill RE Subject Knowledge Programme: Christianity	Thursday 17 <sup>th</sup> February 2022 4.00-6.00pm  Live session at St Nicholas CE Church, 28 The High Street, Kenilworth, CV8 1LZ  <a href="https://www.eventbrite.com/e/re-subject-knowledge-programme-christianity-tickets-165120498857">https://www.eventbrite.com/e/re-subject-knowledge-programme-christianity-tickets-165120498857</a>	Rev Stella Bailey and SACRE representatives from Christian denominations
Westhill RE Subject Knowledge Programme: Buddhist Traditions	Thursday 9 <sup>th</sup> June 2022 4.30-6.30pm  <a href="https://www.eventbrite.com/e/buddhist-traditions-tickets-165125670325">https://www.eventbrite.com/e/buddhist-traditions-tickets-165125670325</a>  Live session at Forest Hermitage Buddhist Monastery, Lower Fulbrook, Warwickshire, CV35 8AS	Buddhist Monk, Luang Por Khemadhammo (Phra Bhavanaviteht) OBE



The videos and 'road maps' for Islam and Sikhi are already on the Warwickshire SACRE website in Section 9 (right at the bottom of the page <https://schools.warwickshire.gov.uk/education-resources/standing-advisory-council-religious-education-sacre/3> ) and links to the Sikh and Islam videos are here:

Sikh: <https://youtu.be/qdOnfUmEdrE>

Islam: <https://youtu.be/P7xRyuXRk74>

The road maps suggest teaching and learning approaches and resources for each tradition from EYFS to KS5.

There is also guidance on how you can use these short films (5-7 minutes on average) to enhance RE subject knowledge with your staff teams.

The Judaism and Hindu Traditions films will be added soon. They are currently being expertly put together by our excellent filmographer, Wayne from Bang the Drum.



**Coming Soon:** In 2022 we hope to offer a series of face-to-face sessions held in the Rugby Orthodox Church of the Ascension, focusing on Orthodox Christianity and key themes such as Creation, Trinity, Nativity and Pascha. Details TBC.

#### 4) Recordings of Prior SACRE RE

All slides and resources from previous CPD sessions are available on the Warwickshire SACRE website in Section 8. However, we did record these, so if you wish to view a recording, please contact [sacre@warwickshire.gov.uk](mailto:sacre@warwickshire.gov.uk)



## 5) SACRE Supportive Monitoring Visits

If you are a school making use of the Coventry & Warwickshire Agreed Syllabus, we can offer you a free two-hour supportive SACRE RE monitoring visit to support you in the development of RE.

To arrange a visit (Microsoft Teams or in-person, depending on school requirements and current pandemic restrictions) email:

[Jennifer.Jenkins@coventry.gov.uk](mailto:Jennifer.Jenkins@coventry.gov.uk) (Coventry schools)

[jenniferjenkins@warwickshire.gov.uk](mailto:jenniferjenkins@warwickshire.gov.uk) (Warwickshire schools)



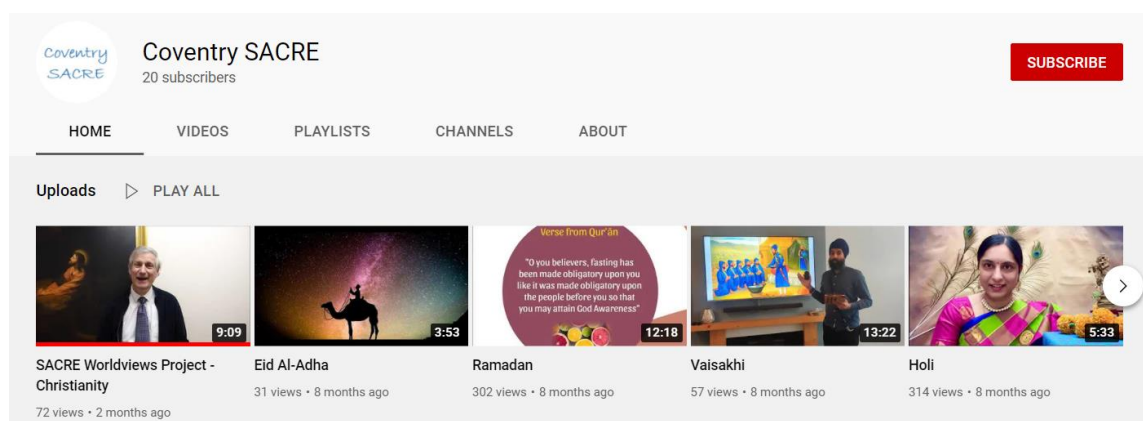
## 6) Responses to Ofsted

We read the Ofsted reports as they come in, looking for mentions of RE or SMSC. We will then contact you to offer our congratulations and/or to offer you some free support to address any areas for development that were identified.

If you are due Ofsted or SIAMS and are concerned about your RE provision, you can request a free SACRE monitoring visit (see information above).

## 7) Coventry SACRE YouTube Channel

We now have a SACRE YouTube channel where we are housing videos made for us by our faith representatives, as well as teaching and learning resources around worldviews we are developing. Take a look!



<https://www.youtube.com/channel/UCffPoYcgj0e3cpIRa0jmG6Q>

\*\*\*\*\*

## Making Local RE Visits & Inviting Visitors

We have recently added a range of resources to our Useful Information section on the Warwickshire SACRE website, so there is now a section on RE visits and visitors. This includes guidance documents for visits and a SACRE-suggested list of visits and visitors with contact details.

<https://schools.warwickshire.gov.uk/education-resources/standing-advisory-council-religious-education-sacre/3>

In addition to these local opportunities, you may also find the following websites and resources useful:

*What Happens in a Place of Worship?* pack from RE Today:

<https://shop.retoday.org.uk/9781910261309>

Videos from the BBC's My Life, My Religion series:

<https://www.bbc.co.uk/programmes/b05pc1c9/clips?page=1>

<https://www.natre.org.uk/uploads/Course%20and%20Event%20Flyers/Strictly%20RE%202018/Seminar%20B/Using%20the%20cutaway%20images.pdf>

[https://www.reonline.org.uk/specials/places-of-worship/introduction\\_video.htm](https://www.reonline.org.uk/specials/places-of-worship/introduction_video.htm)

and <https://www.reonline.org.uk/specials/places-of-worship/videos.htm>

<https://www.reonline.org.uk/teaching-resources/places-of-worship-voices-from-religion-and-worldviews/>

\*\*\*\*\*

## National Opportunities

### Leadership Programme



Applications for the next cohort of the Culham St Gabriel's RE Subject Leadership open again in January 2022 for an autumn 2022 start. We have one local RE leader on the programme this year and Jennifer Jenkins is in her second year of mentoring on the programme, so we have good evidence it is effective and useful

in developing RE subject leaders, especially those who want to increase their sphere of influence in the world of RE.

More details here: [Leadership Programme - Culham St Gabriel's \(cstg.org.uk\)](https://cstg.org.uk)

\*\*\*\*\*



Booking are now open for NATRE's Strictly RE @ Home annual conference, which will again be virtual this time around. Details:

**Dates: Saturday 29 & Sunday 30 January 2022** (PLUS additional seminars leading up to Strictly!)

**Location:** Online

**Full price:** £115 - Price includes downloadable handouts and presentations from all sessions. **NATRE member discounts available:**

	Ticket type(s)				
	Bronze, Silver, Professional, NQT	Gold, Platinum	New2RE	Non-members	Multiple/block bookings (price given per place if booking 3+ places)
<b>New membership types</b>	<b>Teacher, ITE, ECT, Prof.</b>	<b>School</b>			
<b>Cost (after 31 October 2021)</b>	<b>£90 (£25 off)</b>	<b>£75 (£40 off)</b>	<b>£57.50 (50% off)</b>	<b>£115</b>	<b>£75 (£40 off)</b>

**Strictly RE @ Home will have a strong focus across the conference on:**

- Worldviews
- Dharmic traditions
- Ways of knowing

For more details and to book visit: <https://www.natre.org.uk/courses-events/strictlyRE-2022/>

\*\*\*\*\*



PROFESSIONAL DEVELOPMENT

## Free Self-Study Courses

Our Teach:RE courses have moved to their new home here on RE:ONLINE.

We offer four free self-study courses. Expand each of them to find out more details, including how to register and access each course:

An Introduction to Religion and Worldviews for Primary Practitioners	+
Religion and Worldviews – subject knowledge for teaching	+
Religion and Worldviews in dialogue and discourse	+
Religion, Worldviews and Community Relations	+

[Free Self-Study Courses - RE:ONLINE \(reonline.org.uk\)](https://reonline.org.uk)

\*\*\*\*\*

## Local Opportunities



### Peacemakers

Peacemakers works with schools in the West Midlands to help build more peaceful learning environments. Our main focus is on relationships, but we also explore inner peace and peaceful communities with children and young people.

We make our work affordable for schools by seeking funding so we can offer bursaries for our work with children. We offer:

- Peer Mediation training;
- 8 week courses for a class or year group including an outdoor peace explorers' course and a Y6 transition course;
- Learning for Peace - a whole school spiral curriculum that works alongside your current PSHE and SMSC planning [and Rights Respecting Schools if that's an area of priority];
- Junior Peacemaker one day workshops eg climate justice, welcoming refugees, making a difference.

More information about our current bursaries can be found here:

<https://mailchi.mp/6f9484adef3f/peacemakers-courses-and-bursary-offers-1729628>

One of our trainers, Nishi, is based in Coventry, and she would be delighted to come and work with you.

If you are interested but are looking further ahead, or you have concerns about funding, then I encourage you to get in touch to see what we can do.

\*\*\*\*\*



## Coventry Peace Award

The aims of the award are to:

- Offer a free scheme to encourage and support schools to promote peace and reconciliation.
- Enable young people to have a voice in promoting peace and reconciliation – at a personal, local and global level
- Enable teachers to meet other teachers and share information about what they are doing.
- Encourage schools to collaborate on peace initiatives,

- Encourage schools to appoint a Peace Coordinator who will link to other organisations and schools promoting peace and pass on information to other members of staff.
- Enable schools to apply for a certificate (and perhaps a trophy and a small financial award) if they can show they have been promoting peace (and ideally reconciliation) during the past year.
- Raise awareness of Coventry being an international city of peace and reconciliation.

Open to Coventry schools: <https://coventrypeaceaward.uk/>

\*\*\*\*\*

## Icon Schools with Coventry Cathedral



Don't forget you can start a partnership with Coventry Cathedral by becoming an ICON (International Cross of Nails) School! ICONS is a network of over 50 schools, locally, nationally and globally, that supports schools to explore the three aims of:

- Healing the Wounds of History
- Living with Difference and Celebrating Diversity
- Building a Culture of Peace

For more information, see <https://www.coventrycathedral.org.uk/wpsite/icon-schools/>

\*\*\*\*\*

## Understanding Christianity CPD





If you are a community school, you are able to access resources and training for the RE Today **Understanding Christianity** resource at a subsidised rate. See <https://www.understandingchristianity.org.uk/teachers-and-schools/community-schools/> for details.

Coventry DBE are able to provide this training for delegates or whole school staff. Contact [Joanne.Evans@coventrydbe.org](mailto:Joanne.Evans@coventrydbe.org) for more details.

\*\*\*\*\*

## The Story Tent



The Story Tent offers easily accessible online teaching materials to support KS2 pupils to learn more about Religion and Worldviews through the lens of story. It provides resources that develop skills for intercultural and interfaith dialogue through an inquiry-based approach with an exploration of difference at its heart. The Story Tent equips pupils with the confidence they need to live well in our increasingly globalised and diverse societies.

[Story Tent Online \(concordant.online\)](http://concordant.online)

\*\*\*\*\*



## New: SACRE Member Resource Signposting

We have begun asking our SACRE members to share with us resources for the traditions they represent on SACRE. We are kicking this new feature off with some Baha'i resources suggested by Warwickshire SACRE Co-Chair and Baha'i representative, Rocky Grove.



Rocky has shared this with us:



Religious Education Task Force of the Office of Public Affairs

National Spiritual Assembly of the Bahá'ís of the UK

M: 07778 306468

T: 01993 812401

[Opa-re@bahai.org.uk](mailto:Opa-re@bahai.org.uk)

<http://re.bahai.org.uk>

### Notes on Resources for schools

A wealth of material is available both for teacher study and for the use of children and students. A few examples are given here.

Materials for teacher study:

1. Most Baha'i scripture published in English is available from Baha'i Books UK website <https://books.bahai.org.uk/>
2. YouTube offers a range of recently made films, including "The Light of the World".
3. The website of the Baha'i World Centre, [www.bahai.org](http://www.bahai.org), offers a wide range of materials.
4. The University of the Third Age has some Baha'i material on its website.
5. The RETF website, <http://re.bahai.org.uk>, has materials for teachers and for students.
6. The BBC Bitesize, <https://www.bbc.co.uk/bitesize/subjects> has free material.
7. REOnline <https://www.reonline.org.uk/> also has free material
8. Advice on Baha'i literature of all kinds may be obtained either from Baha'i RE or from [www.warwickbahaibookshop.co.uk](http://www.warwickbahaibookshop.co.uk), whose manager is a retired RE teacher.

Materials for student study

Key Stage 1

1. An excellent series of digital stimulus lessons is published and distributed free of charge by Altrincham and Sale Baha'is. Email Rebecca Carey on [wolfmeyerr@hotmail.com](mailto:wolfmeyerr@hotmail.com)
2. Journey into Exile, a book with some student games recounting the exiles of Baha'u'llah, is available for £2 from most Baha'i bookshops.
3. Teachers wanting ideas for KS1 may email our RETF Primary expert Midge Ault on [midgeault19@pobroadband.co.uk](mailto:midgeault19@pobroadband.co.uk)

4. Twinkl has KS1 and 2 resources on the Faith, [www.twinkl.co.uk](http://www.twinkl.co.uk)
5. Youtube has Bahai songs for children such as 'We are Drops'

## Key Stage 2

1. For ideas, email Debbie Tibbey on [deb.tibbey@googlemail.com](mailto:deb.tibbey@googlemail.com)
2. For materials and information about our KS2 Teachers' Pack, email [enquiries@warwickbahaibookshop.co.uk](mailto:enquiries@warwickbahaibookshop.co.uk)
3. An excellent series of digital stimulus lessons is published and distributed free of charge by Altrincham and Sale Baha'is. Email Rebecca Carey on [wolfmeyerr@hotmail.com](mailto:wolfmeyerr@hotmail.com)
4. The Dayspring magazine is brilliant for KS 2, <https://dayspring-magazine.org.uk/>

## Key Stage 3

1. PJ Vickers, *The Baha'i Faith*, centres around a Baha'i family and explains a lot about the religion. Available from Warwick Baha'i Bookshop, above.
2. Our KS3 Teachers' Pack, containing some age-appropriate literature and photos of Baha'i Houses of Worship around the world, is available from the RETF or from Warwick.
3. Since much work at this level is thematic, the Warwick pamphlet series is ideal.
4. The Pupil of the Eye series focuses upon the abolition of racism. Email our member Arzhia Habibi on [arzhiasarahhabibi@gmail.com](mailto:arzhiasarahhabibi@gmail.com) for information.

## Key Stages 4 and 5

1. Email our Secretary for advice on [stephen@appleinter.net](mailto:stephen@appleinter.net)
2. Some excellent films are available from the National Spiritual Assembly of the Baha'is of the UK. Email [nsa@bahai.org.uk](mailto:nsa@bahai.org.uk)
3. Elevate has some lovely videos for KS4 and upwards.

Overall, check with your Baha'i SACRE members, and if they cannot help, email our Secretary Dr Stephen Vickers on [stephen@appleinter.net](mailto:stephen@appleinter.net)

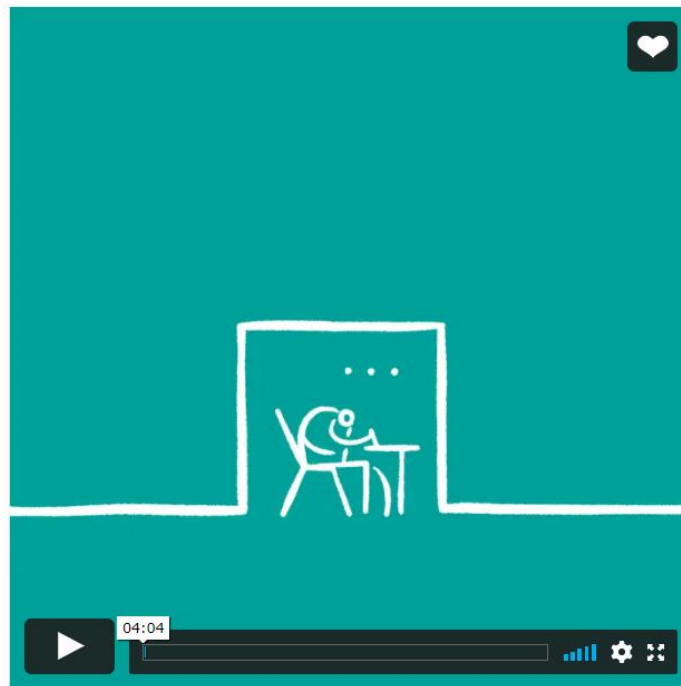
To contact Rocky (Warwickshire) or Bill (Coventry) regarding a visit to better explore the Baha'i tradition, see our SACRE Suggested List of Visits and Visitors on the Warwickshire SACRE website in Section 6:

<https://schools.warwickshire.gov.uk/education-resources/standing-advisory-council-religious-education-sacre/3>

\*\*\*\*\*

## New RE Resources

The Religious Education Council have produced a new short film on the Worldviews approach to teaching RE.



## Welcome to a Religion and Worldviews Approach

Produced for the RE Council of England and Wales

[Welcome to a Religion and Worldviews Approach \(vimeo.com\)](https://vimeo.com/Welcome-to-a-Religion-and-Worldviews-Approach)

\*\*\*\*\*



### Exploring the Lived Experience of Families from Eight Worldviews

Described by the publisher as:

*A set of beautifully produced hardback books for learners of all ages, is an essential resource to support understanding of the diversity of religion and worldviews. Each book focusses on a five year old child within the family and includes simple text and full page photographs to illustrate aspects of the child's and family's everyday life.*

*Families reflecting Buddhism, Christianity, Hinduism, Sikhism, Judaism, the Bábá'í faith, Islam and humanism are featured and reflect some lesser known traditions and expression of beliefs.*



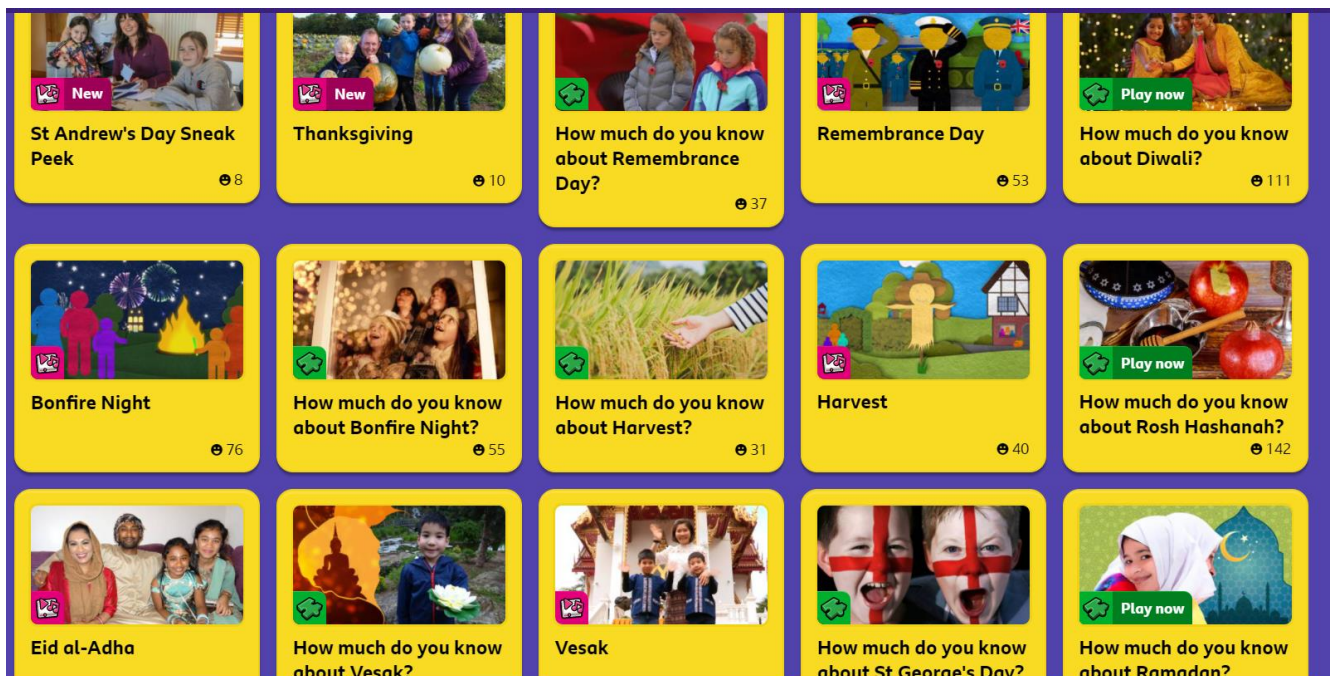
These new books are suitable for EYFS and KS1 in particular and are available from [www.booksatpress.co.uk](http://www.booksatpress.co.uk) or by contacting [gill@booksatpress.co.uk](mailto:gill@booksatpress.co.uk)

\*\*\*\*\*

CBeebies *My First Festivals* website offers both episodes and online games to support young pupils with understanding a range of religious and cultural festivals celebrated in Great Britain:

[My First Festivals - CBeebies - BBC](http://www.bbc.co.uk/cbeebies/myfirstfestivals)

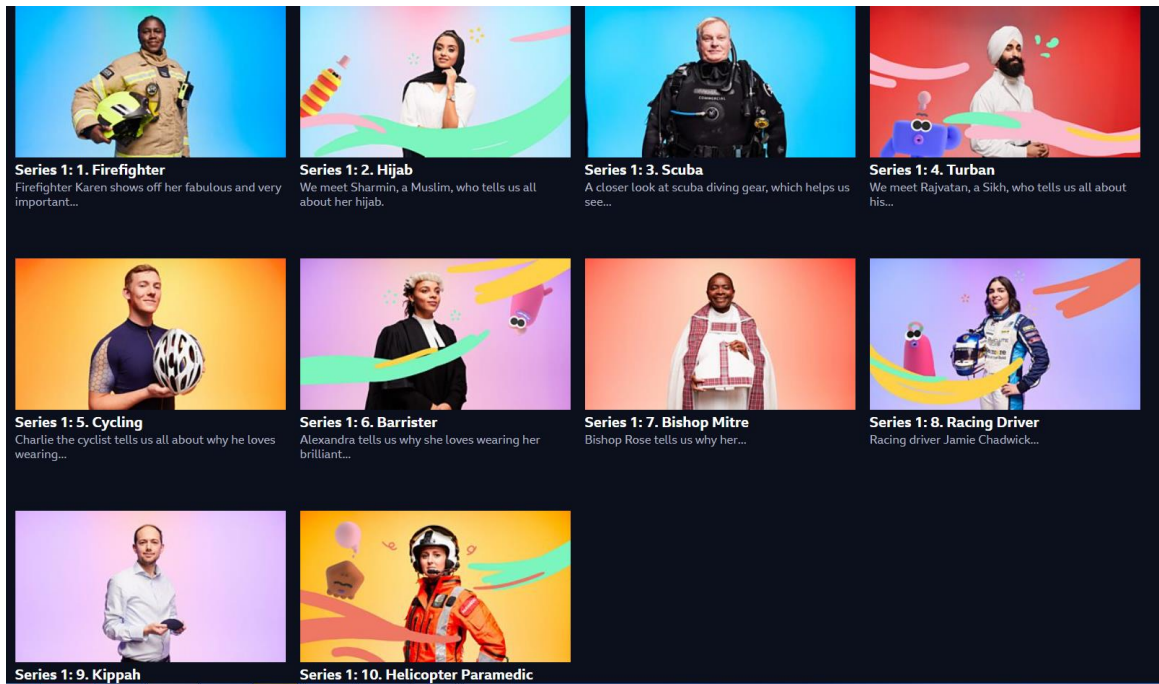
See below for some of the featured festivals across a range of religious traditions.



\*\*\*\*\*

The CBBC series, *What's On Your Head?*, features some episodes based on religious head coverings you may find useful for RE lessons:





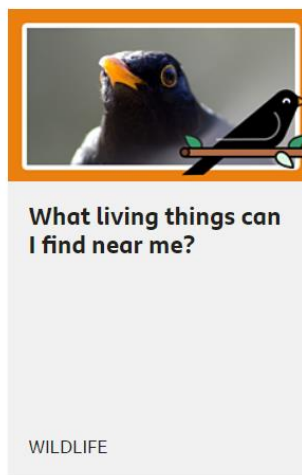
### [BBC iPlayer - Whats on Your Head?](#)

\*\*\*\*\*

BBC Bitesize has a series of resources for KS1 called The Regenerators, with a focus on the environment and climate change.

## The Regenerators - Lessons age 5 to 7

Lessons to support learning about the environment. Check back regularly to discover new lessons.



### [The Regenerators - Lessons age 5 to 7 - BBC Bitesize](#)

Children and young people are frequently interested in the climate change issue. Rugby Inter Faith Forum put together some great resources for schools with faith perspectives on this important issue, for use in debating an expressed position regarding the place of religion in the responsibility for tackling climate change.



“Religion is an essential factor in motivating individuals to protect the environment and address climate change”

<i>Faith Perspective</i>	<i>Hinduism</i>
Fundamental Principle of the Faith	Hinduism teaches the five great elements [Space, Air, Fire, Water and Earth] that constitute (make up) the environment are derived from the Prakriti, the primal [original, ancient] energy, the creator. ---UPANISHADS
What the faith teaches about taking care of the environment (sacred texts)	Hindus worship and accept the presence of

You can find these resources and support for setting up a debate on the Warwickshire SACRE website in Section 6: Useful Resources.

<https://schools.warwickshire.gov.uk/education-resources/standing-advisory-council-religious-education-sacre/3>

## Awards for RE

# RE Quality Mark





- ▶ Do learners in your school have high quality religious education?
- ▶ Does RE contribute to whole school improvement?
- ▶ Would you like high quality RE in your school to be recognised?

The REQM acknowledges and celebrates outstanding RE.  
If you know that you are making a difference to learners, consider applying for the REQM.







www.reqm.org

## REQM Award

We are looking for local schools who are keen to pursue accreditation with the RE Quality Mark (or REQM). We are aware of a primary and secondary school in Nuneaton who are working together on their mutual applications and are keen to find more schools who would like to find out more about this award and begin their work towards achieving this accolade.

Sandra Teacher, who has recently joined Warwickshire SACRE as a representative for Judaism, is also very much involved with the REQM award and is happy to run an introductory session for all schools who are interested in beginning their REQM accreditation journey in 2021.

You can find out more about the REQM award here: <https://www.reqm.org/>

If you are interested in signing up for the introductory online meeting with Sandra, please send an email to Jennifer Jenkins expressing your interest and we will contact you in due course with dates/times and joining details.

[Jennifer.Jenkins@coventry.gov.uk](mailto:Jennifer.Jenkins@coventry.gov.uk) (Coventry schools)

[jenniferjenkins@warwickshire.gov.uk](mailto:jenniferjenkins@warwickshire.gov.uk) (Warwickshire schools)

\*\*\*\*\*

## Unicef Rights Respecting Schools Award



Unicef's Rights Respecting Schools Award has a useful website linking awareness day and events to human rights. You can also find out more about applying for the award here: [Linking Events to Rights - Rights Respecting Schools Award \(unicef.org.uk\)](http://unicef.org.uk/Linking%20Events%20to%20Rights%20-%20Rights%20Respecting%20Schools%20Award)

\*\*\*\*\*



## Faith and Belief Forum: School Linking

The School Linking Programme matches students and classes from different cultural or faith backgrounds to explore issues of identity, community and belief. For more information and to apply for linking, click here:

[School Linking - The Faith & Belief Forum \(faithbeliefforum.org\)](http://faithbeliefforum.org/School%20Linking)

\*\*\*\*\*

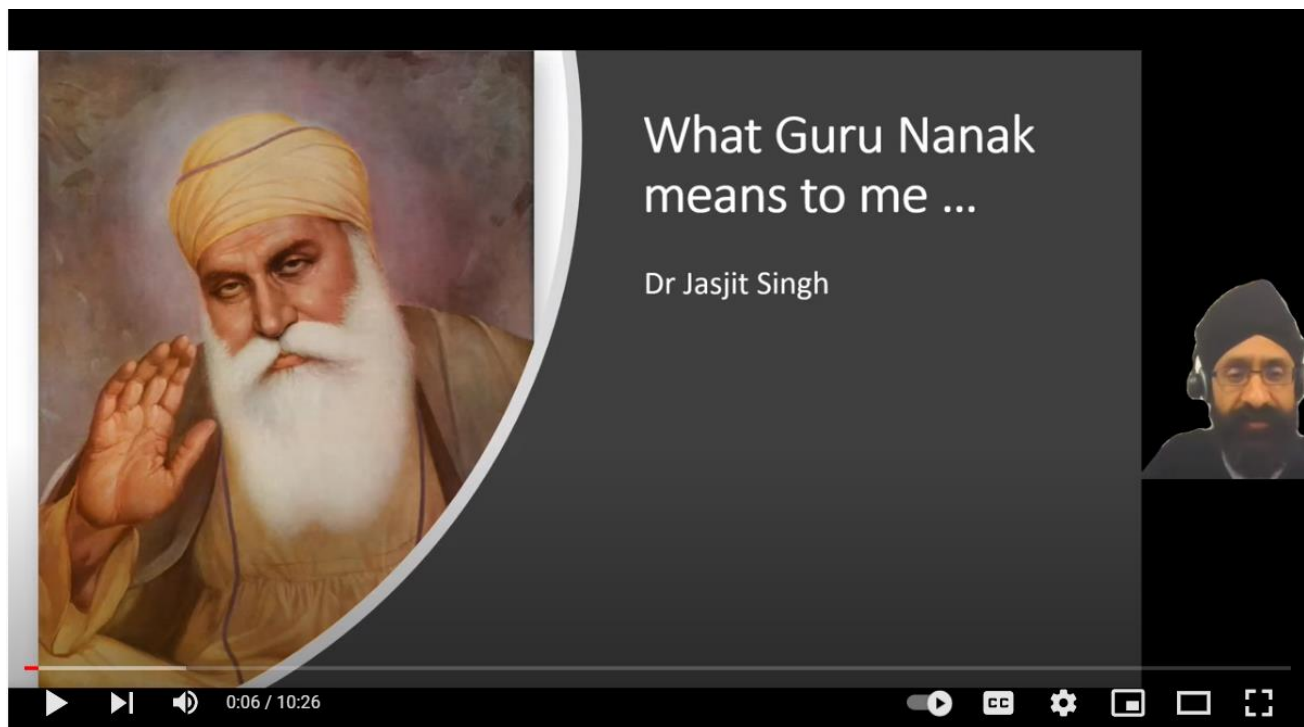
## Great Things to Read and Listen to





The RE Podcast is a great source of RE subject knowledge and helps to ensure diversity is expressed within RE teaching.

\*\*\*\*\*



Sikhi for RE: How Guru Nanak Inspires Me: <https://youtu.be/el9v4K9vTE0>

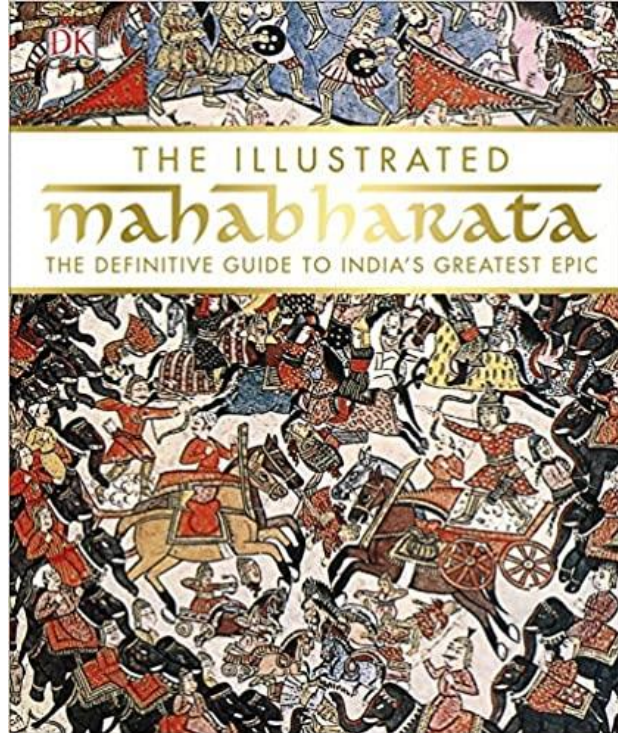
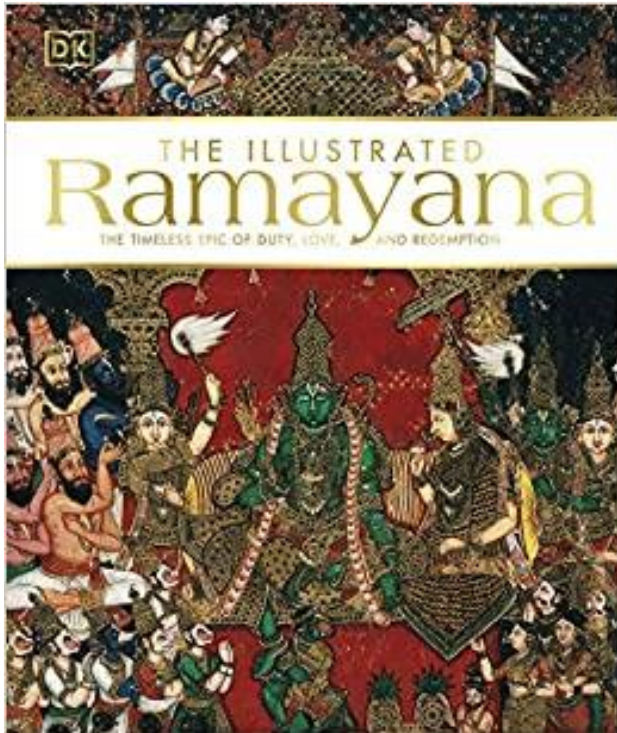
\*\*\*\*\*

Katie Freeman, Chair of NATRE, has expounded on her use of the Worldviews Approach in teaching RE at primary level as part of this article: [Religious education in primary schools – What's the point? \(teachwire.net\)](https://www.teachwire.net/religious-education-in-primary-schools-Whats-the-point/)

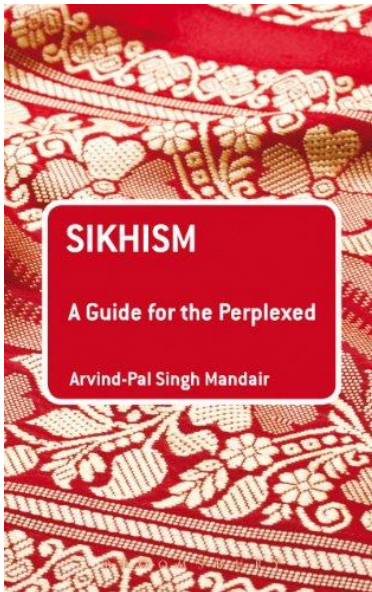
We shared a range of Worldviews resources, as well as those on multidisciplinary RE, in our Autumn 2021 RE Bulletin, available via the Warwickshire SACRE website: <https://schools.warwickshire.gov.uk/education-resources/standing-advisory-council-religious-education-sacre/3>

\*\*\*\*\*

## Recommended Books for RE



Two beautifully illustrated volumes of two Sanskrit epics of ancient India.



This is intended as a textbook for students engaging in religious studies as part of further education but would also provide much-needed subject knowledge for teachers.