

H

The Higgins
BEDFORD

WHAT'S ON

October 2019 to March 2020



William Blake (1757–1827) – *The Good and Evil Angels Struggling for Possession of a Child*
c.1793



BEDFORD
BOROUGH COUNCIL

CONTENTS

Exhibitions	3
Displays	8
Exhibitions and Displays Coming Soon	9
Events	11
Tours	15
Reminiscence Sessions	16
Wellbeing Programme	17
Holiday Activities	19
School Visits	20
The Friends of The Higgins Bedford	21
Volunteering at The Higgins Bedford	22
Venue Hire	23
Shop	24
Access	28
Events Calendar	29
Contact Us and How To Find Us	32

About the Higgins Bedford

The Higgins Bedford is a Bedford Borough Council cultural service that showcases wonderful and varied collections including The Cecil Higgins Collection of fine and decorative arts, world-class watercolour and prints and unique groups of work by the designers William Burges and Edward Bawden. The Higgins Bedford explores the inspiring stories of local people and encourages a 'sense of place' for Bedford and the surrounding area. Using collections of archaeology, social history and ethnography, the museum shows how Bedford Borough has developed over time. These collections inspire a busy programme of temporary exhibitions as well as our active learning and events programmes.

Visit The Higgins website and social media pages to keep up to date on events and exhibitions.

EXHIBITIONS

Dreams and Nightmares

12 October 2019 – 22 March 2020

Wixamtree and Connections – Free Entry



William Blake (1757–1827) – *The Good and Evil Angels Struggling for Possession of a Child* c.1793

Discover artists' depictions of dreams and nightmares in this exhibition drawn from the internationally renowned Cecil Higgins Collection. Explore spiritual visions, spectral images, fairies, witches and romantic dreams. Works include Samuel Palmer's dreams of the village of Shoreham, Dante Gabriel Rossetti's visions of the flames of hell and the literary nightmares of Henry Moore's Greek myths. Nightmares become reality in Pablo Picasso, Kathe Kollwitz and Francisco Goya's depictions of war whereas fairies and goblins run riot in the watercolours of Richard 'Dickie' Doyle and Arthur Rackham. There is something for everyone in *Dreams and Nightmares*. This exhibition has been organised in collaboration with Christiana Payne, Professor of History of Art at Oxford Brookes University.

EXHIBITIONS

Dreams and Nightmares Gallery Tour

6 November, 15 January, 4 March, 12pm – 12:30pm

£3.00, £2.50 for concessions – Booking Essential

Join the Keeper of Fine and Decorative Art, Victoria Partridge, for a lunchtime tour of the highlights in the exhibition.

Lunchtime Lecture with Professor Christiana Payne – The Dreams

Wednesday 27 November, 12pm – 1pm

Free Entry – Booking Essential

Join co-curator Christiana Payne, Professor of History of Art at Oxford Brookes University, for a lunchtime lecture about the dream-like images in the exhibition. Sponsored by Oxford Brookes University.



Jessie Marion King (1875–1949) *The White Lady*, 1903

British Sign Language – Exhibition Tour and Workshop with Access Bedford

Saturday 7 December, 11am – 1pm

Free Entry – Booking Essential

Join Peter Cooke for a Deaf BSL tour of Dreams and Nightmares, followed by an art workshop. This is a British Sign Language only event – no oral instruction will be given.



Max Klinger (1857–1920) – *On Death Part Two, Dead Mother*, 1898

Lunchtime Lecture with Victoria Partridge – The Nightmares

Friday 13 December, 12pm – 12:45pm

Free Entry – Booking Essential

Explore the nightmarish images of the exhibition
in a lunchtime lecture.

Study Day

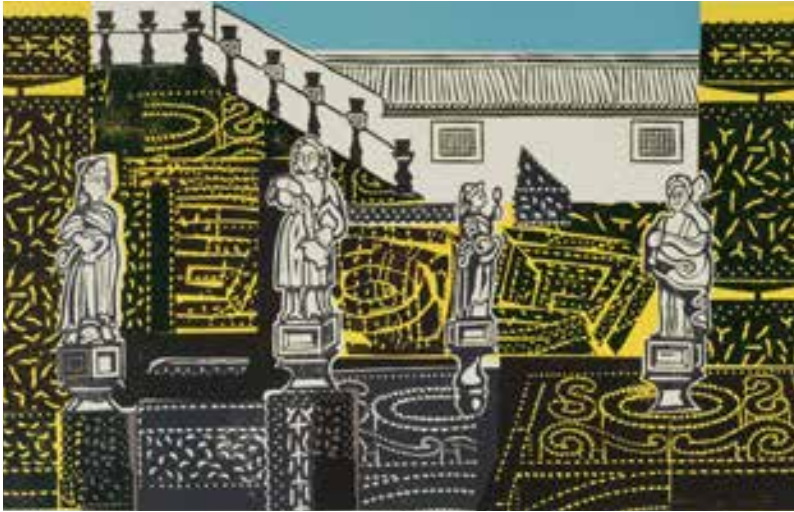
Saturday 1 February, 11am – 4pm

£12 + £3 Transaction Fee – Book by Thursday 30 January

Tickets available via Bedford Corn Exchange Box Office
(01234 718044/www.bedfordcornexchange.co.uk)

Explore further the theme of Dreams and Nightmares in art
with talks by co-curators Victoria Partridge and Professor
Christiana Payne, as well as Dr David Boyd Haycock and
Dr Nicholas Tromans. Lunch and refreshments provided.
Sponsored by Oxford Brookes University.

EXHIBITIONS



Edward Bawden (1903–1989) *Castelo Branco* from *Edward Bawden in Portugal*, 1962
©The Edward Bawden Estate

Edward Bawden: Home and Abroad

Continues until 26 January 2020

Edward Bawden Gallery – Free Entry

A keen observer of the world around him, the artist Edward Bawden often chose subjects close to home, such as the villages, farmyards and churches of his native rural Essex or London's monumental buildings, bridges and train stations. Yet Bawden was remarkably well travelled and his world extended far beyond England, to Africa, the Middle East, Canada and many parts of Europe. *Home and Abroad* presents the places that feature in Bawden's work and explores how his surroundings have shaped and influenced his art.

Home and Abroad Gallery Tour

Thursday 14 November, 12pm – 12:30pm

£3.00, £2.50 for concessions – [Booking Essential](#)

Join exhibition curator Victoria Partridge, for a lunchtime tour of *Home and Abroad*.

Home

Art Exhibition: 3 – 15 December 2019

Sir William Harpur Gallery – Free Entry

Photography Exhibition: 3 December 2019 – 29 March 2020

Outside Settlement Gallery – Free Entry



Image by Adam, inspired by Banksy
– 'Keep Your Coins, I Want Change'

Bedford Homeless Partnership proudly presents a mixed media exhibition by artists with personal experience of homelessness. This promises to challenge perceptions, provoke discussion and raise

awareness of what 'home' really means to people on the streets, in hostels and refuges.

Poland: in Bedford

Continues until January 2021

Great Bedfordians Gallery – Free Entry



Katarzyna Wierna in Palestine, 24 Nov. 1945,
courtesy of Dani Vaughton

Remembrance Day 2018 commemorated the 100th anniversary of Polish independence. This exhibition celebrates Bedford's Polish community, many of whom settled following the Second World War and was created in partnership with the Polish British Integration Centre (PBIC).



DISPLAYS

Spotlight on the Collections

Spotlight Gallery – Free Entry

View this display of Ancient Greek coins and pottery. Future displays will explore a wide range of themes including items from recent excavations and the Portable Antiquities Scheme.

RAE Bedford and Concorde

Continues Until June 2020 – Free Entry

On 9 April 1969, the British prototype Concorde 002's maiden flight took place, the culmination of many years research for the Concorde project. The Royal Aircraft Establishment (RAE) Bedford was a major contributor to this research by using wind tunnels near Milton Ernest and the flight research airfield at Thurleigh. Their work is on display to commemorate this incredible achievement and illustrates the evolution of Concorde's design.



RAE Bedford and Concorde by Barry Tomlinson

Wednesday 6 November, 2pm – 3pm

Free Entry – Booking Essential



Concorde at Thurleigh in 1972

Barry Tomlinson, a retired Royal Aircraft Establishment expert, will give an illustrated talk outlining the highlights of RAE Bedford's contribution to Concorde's technical success, expanding on the material in the display.

EXHIBITIONS AND DISPLAYS COMING SOON



Mural for the Entrance Hall to the Morgan Crucible Company Battersea Works' 1957-1958
©The Edward Bawden Estate

Edward Bawden: Architectural Elements

8 February 2020 – 24 January 2021

Edward Bawden Gallery – Free Entry

Bawden's friend and biographer Douglas Percy Bliss wrote that Bawden's concerns with art 'include all aspects of Design, Architecture and Gardening'. Architecture is amongst the prominent recurring motifs that appear in his work. From the wallpaper designs with their architectural elements to the vignettes of houses in rural England depicting the nostalgia of pre-war buildings, the modernist architecture of the 1930s and the lattice structures of Victorian cast-ironwork that were to become lost to modernisation. This exhibition will focus on Bawden's passion for architecture from his well-known linocuts to personal Christmas cards and private commissions.

Bawden Archive Session

Thursday 23 April, 10am – 11am

£5.90, £4.70 for concessions* – [Booking Essential](#)

Delve into the Edward Bawden archive with Victoria Partridge, Keeper of Fine and Decorative Art, to view works that have never been on display as well as old favourites.

Under the Same Sky

Opening 4 April 2020

Wixamtree Gallery and Connections Gallery – Free Entry

Discover the impact of weather on the local landscape, alongside a display of watercolours and prints from the world renowned Cecil Higgins Art Gallery Collection. Celebrate local pioneers and research organisations including the founders of the national Meteorological Society, the weather forecasters for the airships at Cardington and the recorders of rainfall.

Teasing Out Contingencies

21 April – 28 June 2020

Sir William Harpur Gallery – Free Entry



Quilla Constance Celsnakar
Performance photographed
by Simon Richardson

Experience a new large scale oil painting and performances by Quilla Constance. The project will arrive at The Higgins following its premier at Tate Exchange/Tate Modern in early April 2020. Quilla Constance's artworks

for this exhibition are inspired by conversations and interactions with the public across London and the South East through a series of performance workshops, in collaboration with Tate Exchange/Tate Modern, BCA, Bedford College, 198 Contemporary Arts and The Higgins Bedford – funded by Arts Council England.



Supported using public funding by
**ARTS COUNCIL
ENGLAND**

Warden Abbey Revealed

April – September 2020

Outside Settlement Gallery – Free Entry

Recent research by the Old Warden History and Heritage Society alongside the results of the geophysical survey by MOLA (Northampton) has revealed the grandeur of the medieval Cistercian abbey. The reconstruction illustration by Peter Dunn will be on display enabling us to go back in time and visualise Warden Abbey in its heyday.

EVENTS

BedPop Fun Palaces

Saturday 5 October, 10am – 5pm

Sunday 6 October, 11am – 5pm

BedPop Fun Palaces returns for a weekend of workshops, events and activities. Fun Palaces is a national initiative bringing free workshops to the community based on art, science and culture, giving visitors the opportunity to try something new.

BedPop Science Lab

Saturday 7 March, 10am – 5pm, Free Entry

To celebrate British Science Week, BedPop Science Lab is back at The Higgins with experiments, workshops, demonstrations and all kinds of STEM related fun.



Portable Antiquities Scheme

Wednesdays: 25 September, 27 November, 29 January, 25 March, 27 May, 29 July, 1pm – 3pm

Have you ever found archaeological objects whilst digging in the garden, taking the dog for a walk or metal detecting? Would you like to find out more about them? Matt Fittock, Finds Liaison Officer for the Portable Antiquities Scheme can help. The Portable Antiquities Scheme is a nationwide service run by the British Museum. To find out more, visit www.finds.org.uk

The Higgins Knitting Group

Tuesdays: 17 September, 15 October, 19 November, 17 December, 21 January, 18 February, 17 March, 21 April, 11am – 1pm, Free Entry



Get creative and join like-minded crafters to knit and crochet hats, socks, gloves and blankets for charitable causes including Knit for Peace.

Photographed by Chas Leslie

Mixed Race People are 'Cultural Negotiators'

Panel Discussion with Michelle Balach-Ali

Sunday 13 October, 2:30pm – 3:30pm

Free Entry – Booking Essential

Common stereotypes label mixed race people as, 'confused', or, 'unable to choose between one side or the other'.

Michelle Balach-Ali's recent study of Bedford participants found in fact they were comfortable with their cultural identity. The study showed that mixed race people are competent 'cultural negotiators', equipped with the resilience to withstand various forms of racial abuse. Join Michelle as she shares the findings of her study and asks the panel members and audience to consider their own position regarding mixed race identity in Bedford.

Music Matters: African and Caribbean Heritage Day

Saturday 26 October, 11am – 4pm, Free Entry

Celebrate the music that has inspired Bedford's African and Caribbean community. Enjoy performances by local artists and topical talks and discussions on the history of different musical styles. Take part in musical workshops and browse stalls. Prices vary for workshops.

**Children Born to Black GIs and British Women in the Second World War by Professor Lucy Bland**

Saturday 9 November, 2:30pm – 3:30pm

£5.90, £4.70 for concessions – Booking Essential



Join Lucy Bland, Professor of Social and Cultural History at Anglia Ruskin University, to explore the history of wartime children born to black GIs and British women. Many suffered racism as well as the stigma of illegitimacy. Now in their 70s, many have told their stories, which have been shared and captured in Lucy's recently published book.

Christmas Craft Weekends

Saturday 23 November, 1pm – 4pm, Free Entry

As part of Wellbeing Saturday sessions, design and make paper star decorations. Suitable for families.

Sunday 24 November, 2pm – 4pm

£12 (including materials) – Booking Essential

Join local illustrator and printmaker Katie Allen to design and lino print your own Christmas wrapping paper, cards and gift tags. Adults only.



Saturday 30 November, 2pm – 4pm

£12 (including materials) – Booking Essential

Join local artist Anne-Marie Abbate and make a felted Christmas decoration. Adults only.

Museum Shop Sunday

Sunday 1 December, 2pm – 5pm

Enjoy Christmas shopping at The Higgins Shop and purchase creative and unique goods made by independent suppliers and artisans. The perfect opportunity to find a rare Christmas gift inspired by the museum's collections and exhibitions.





Holocaust Memorial Day 2020

Tuesday 21 January, Free Entry

Holocaust Memorial Day Flames marks the 75th anniversary of the liberation of Auschwitz. The Higgins Bedford, in partnership with the Holocaust Memorial Day Trust, will commemorate this anniversary with a display of artwork, around the theme 'Stand Together'. If you would like to contribute, please email Lydia.Saul@bedford.gov.uk for more information. The official Civic commemorations will take place at the Anne Frank Tree, Russell Park and Harpur Suite, on Holocaust Memorial Day, Monday 27 January.

The Legacy of Anne Frank by Gillian Walnes Perry MBE

Sunday 26 January, 2:30pm – 3:30pm

£5.90, £4.70 for concessions*



Co-Founder of the Anne Frank Trust, Gillian Walnes Perry MBE, will be giving a talk and signing her recently published book. Author of 'The Legacy of Anne Frank', Gillian's talk celebrates the life of Anne Frank, and her impact on young people today.

LGBT+ History Month

Join us for our LGBT+ History Month celebrations in partnership with Schools OUT UK. There will be a variety of activities around this year's theme of Poetry, Prose and Plays, including tours around the museum to highlight links to the collections.

OUTing the Past Festival

Saturday 15 February, Free Entry

We are excited to be a hub venue to celebrate LGBT+ History Month through the national OUTing the Past Festival with a diverse range of stalls, activities, discussions and inspiring talks throughout the day.



TOURS

Fine and Decorative Art Tour

17 October, 23 January, 5 March, 11:30am – 12:30pm

£5.90, £4.70 for concessions* – Booking Essential



Take a tour of the internationally renowned Cecil Higgins Art Gallery Collection. Highlights include furniture by William Burges, linocuts by Edward Bawden and European porcelain.

The Crocker Dressing Table, designed by William Burges,
© Cecil Higgins Art Gallery

Social History Collection Tour

28 November, 11:30am – 12:30pm

£5.90, £4.70 for concessions – Booking Essential

Join Lydia Saul, Keeper of Social History, for a tour of the Social History Collection. Explore highlights in Somewhere in England and Great Bedfordians and discover the people, places, businesses and objects that represent the development of Bedfordshire.

Archaeology Collection Tour

13 February, 11:30am – 12:30pm

£5.90, £4.70 for concessions* – Booking Essential

Explore the important archaeological sites and fantastic finds recovered in Bedfordshire and beyond in a tour of Settlement and Collectors Galleries with Liz Piekema, Keeper of Archaeology. Highlights include the stories of local and famous collectors and how the collections were formed.

Haunted Higgins House Tour

Thursday 31 October, 6:30pm – 7:30pm and 7:30pm – 8:30pm

£10, includes wine and refreshments – Booking Essential

Join us for mysterious tales of things that go bump in the museum. Over 18's only. Dressing up encouraged!

REMINISCENCE SESSIONS

Join in with friendly, informal reminiscence sessions.
A great way to meet new people and be inspired by
memories and stories of the past.

Remember When... Reminiscence Mornings at The Higgins Bedford

11am – 12:30pm, Free Entry, Refreshments £1

12 September: Break a Leg...

10 October: Dreams and Nightmares

14 November: Bedfordshire Folklore and Folk Songs

12 December: Christmas Carols and Traditions

9 January: Winter Comforts

13 February: Vintage Silver Screen

11 March: Terrific vs. Terrible Technology

16 April: Favourite Family Recipes



Back Down Memory Lane @ Number Thirteen, St Paul's Square, Bedford

10:30am – 12pm, Free Entry, Refreshments £1

26 September: Back to School

31 October: Film Favourites and Fright Nights

28 November: Made in Bedford

WELLBEING



Wellbeing at The Higgins Bedford Museum = Happy
A great way for local people to improve their physical and mental health while learning new skills and socialising with others. The Higgins work with partner organisations to provide suitable spaces and workshops for group sessions.

Sketch Fridays

Every Friday, 12pm – 4pm, Free Entry

Soak up the atmosphere in the galleries and collections and be inspired to create your own pieces of art. Materials are provided, or you can bring your own. Please do not bring paint or materials that might cause damage to the collections.

Wellbeing Saturdays

14 September 2019, 19 October, 23 November,
 25 January 2020, 22 February, 21 March, Free Entry

Join us for some ‘down time’ and enjoy a variety of relaxing and sociable activities including:

1pm – 4pm - Arts & crafts and table top games
 (suitable for families)

2pm – 4pm – Tea Party Poetry sessions.
 (not suitable for young children)



A Write at the Museum – A Fun Day of Creative Writing with Author Derek Niemann

Saturday 9 November, 11am – 4:30pm

£10 – Booking Essential

Enjoy a fun day of creative writing and improve feelings of wellbeing. Inspired by the museums' collections, author Derek Niemann will guide the group. 18 places available, no experience needed.



Photographed by Chas Leslie

Weekly Physical Activities

Yoga: Mondays, 10:30am – 11:30am, £5,

2 September – 25 November, 6 January – 30 March
(not 24 February) Enquiries: juandhannigan@yahoo.co.uk

Table Tennis: Every Monday (except Bank Holidays),
2pm – 3pm, £2

Steady & Social Tai Chi (Ages 55+): Tuesdays,
10am – 11am, £3, Places limited to 26.

Mindful Walking: Every Friday, 11am – 12pm, Free Entry

For further details, email Vicki.Blair@bedford.gov.uk

HOLIDAY ACTIVITIES



Photographed by Chas Leslie

October Half Term 2019 – Enter the World of Dreams and Nightmares: Tuesday 22 – Friday 25 October

Workshops start at 11am, 12:30pm and 2pm, £3

Explore *Dreams and Nightmares* and enjoy spooky and creative activities including mask making, Halloween clay models and potions! – sponsored by Oxford Brookes University.

February Half Term 2020 – Sweet Dreams: Tuesday 18 – Friday 21 February

Workshops start at 11am, 12:30pm and 2pm

Creative family activities inspired by *Dreams and Nightmares*.

Easter Holiday 2020 – Under the Same Sky:

Tuesday 7 & 14, Wednesday 8 & 15, Thursday 9 & 16 April

Workshops start at 11am and 2pm

Explore *Under the Same Sky* and take part in weather themed activities for the family.

All workshops last for an hour and are aimed at 4 to 11 year olds. Children must be accompanied by an adult. Places are limited.

SCHOOL GROUPS

School groups are welcome to visit The Higgins during opening hours. Enrich your visit with engaging workshops that cover a range of topics and reflect the strengths of the collections.



Make your school visit memorable by taking part in hands-on activities, investigating artefacts and exploring the galleries. Short talks on collections and exhibitions can be arranged for groups of older students. Please book in advance by contacting thehiggins@bedford.gov.uk. The Higgins Bedford is a Culture Challenge Provider, Arts Award Supporter and Artsmark Partner.



THE FRIENDS OF THE HIGGINS BEDFORD

Join The Friends

Friends of The Higgins Bedford play an important part in the life of the art gallery and museum. Joining the Friends will put you at the heart of The Higgins Bedford and will help support our work.

Friends Lectures

Lectures start at 7.30pm at The Higgins Bedford
Members £4, Non-Members £9

Dr Anne Daye – An Exceeding Good Ball; Dancing in the Life and Novels of Jane Austen

Tuesday 15 October

Explore the intricacies of dances that would have been familiar to Jane Austen, as well as ballroom etiquette and the music of the 1800s.

Barry Venning – Artists' Feuds

Tuesday 29 October

Find out about the world's greatest artistic feuds, from

Brunelleschi and Ghiberti, Constable and Turner and between graffiti artists Banksy and 'King' Robbo.

Christopher Bennett – The Antarctic Explorer, Apsley Cherry-Garrard

Tuesday 3 December

Discover the extraordinary life of Bedford-born polar explorer, Apsley Cherry-Garrard and his experiences as part of Captain Robert Falcon Scott's ill-fated expedition to the South Pole.

Professor Phil Cleaver and Deborah Wolpe – Berthold Wolpe: The Total Man

Tuesday 14 January

Hugh Belsey – The Grand Tour

Tuesday 11 February

Bob Hook – Swifts: The

Fastest Birds on the Planet

Tuesday 17 March

Paul Middleton – The Art of John Seymour Lindsay

Tuesday 14 April

James Russell – Tirzah Garwood

Tuesday 5 May

VOLUNTEERING AT THE HIGGINS BEDFORD



The Higgins Bedford has a range of volunteering roles and opportunities. These include gardening, welcoming visitors, helping with events, holiday activities and school visits, supporting the team in the office and assisting with research. Volunteering can help you to meet new people, connect with your community, learn new skills and gain experience. Other benefits include training, a regular monthly newsletter, and discounts on membership of the Friends of The Higgins Bedford, selected items in The Higgins Shop and at The Higgins Pantry (before 6pm).

The Higgins garden volunteers are looking for more people to join the group. If you can spare some time, there are a variety of jobs including:

- Running plant stalls
- Leading garden tours
- Watering the beds in summer
- Organising plants for the beds and plant stalls
- Sowing and raising seeds at home (seeds provided)
- Caring for small plants at home until ready for planting

Garden volunteers meet every Monday from 1pm – 3pm, followed by tea and are hoping to open a second session. Email thehiggins@bedford.gov.uk for more information.

VENUE HIRE

The Higgins Bedford is an exciting, unique and accessible venue for functions, conferences, workshops and events. The Higgins Bedford has several flexible spaces and an attractive central location close to the Town Centre and Bedford's beautiful Embankment. All of the rooms are available Tuesday to Sunday during working hours.

Castle Room

The Castle Room is a perfect venue for lectures, talks, conferences and larger meetings. It has a PA system and Wi-Fi. With a lecture-style layout, its capacity is 100 people.

Garden Room

A perfect room for smaller meetings, talks or workshops. This room boasts beautiful views of Castle Gardens and has Wi-Fi. With a horse-shoe meeting room layout this room has capacity for 20 people.

Bailey Room

With some original brewery features and a friendly feel this room has capacity for 10 people.

Barbican Studio

An excellent creative space ideal for drawing, painting and print workshops. This room has Wi-Fi and capacity for up to 40 people.

Harpur Studio

A creative studio space ideal for workshops, meetings and talks. This room has Wi-Fi and capacity for 25 people in a workshop style layout.

If you would like to hire spaces talk to us at thehiggins@bedford.gov.uk or on 01234 718618.

SHOP AT THE HIGGINS BEDFORD

Our shop has a range of products inspired by the collections, exhibitions and events. Cards, postcards, books and gifts as well as a bespoke range for exhibitions and a growing number of cards and gifts sourced from local makers can be purchased. Ranges include: Bawden, Exhibitions, Collections, Bedford, Garden, Mini and Seasonal.



Photographed by Chas Leslie

CHRISTMAS OPENING TIMES

December

Saturday 21 – 11am to 5pm

Sunday 22 – 2pm to 5pm

Monday 23 – Closed

Christmas Eve 24 – 11am to 3pm

Christmas Day 25 – Closed

Boxing Day 26 – Closed

Friday 27 – 11am to 5pm

Saturday 28 – 11am to 5pm

Sunday 29 – 2pm to 5pm

Monday 30 – Closed

New Year's Eve 31 – 11am to 5pm

January

New Year's Day 1 January – Closed

This half term ... kids eat free!!



THE
Higgins
PANTRY

Restaurant • Light Lunch • Café • Live Music

Opening hours: Weds - Sat 11am til 10pm | Tues & Sunday 11am - 5pm

The Higgins Pantry, Castle Lane, Bedford MK40 3XD Tel: 01234 276340

www.thehigginspantry.co.uk

email: eat@thehigginspantry.co.uk



[TheHigginsPantry](https://www.facebook.com/TheHigginsPantry)



[@the_pantry](https://twitter.com/the_pantry)

T&C's - one paying adult (from main or light lunch menu) per child. Children eat free from kids menu. Includes juice and ice cream!!

Your Library anytime, anywhere

Can't get to the Library? Visit us on-line at www.bedford.gov.uk/libraries where you will find e-books, audiobooks, magazines, newspapers and comics to download. If its music you're after, you can also download and stream for free!! You will need your Library Card Number and PIN to access these resources.

Have you discovered the Library App? Visit the Google Play Store or Apple app store, search for 'Bedford Borough and Central Bedfordshire Libraries' and install it today! Then with your Library Card Number and PIN you can:

- Request titles
- Renew your loans
- Check and cancel your reservations
- Keep on top of your account
- Find library details and locate the library on a map; it will even give you directions to the library!



Not already a Library member? You can register by filling in the on-line form under the 'About Your Library' tab - we will give you your Library Card Number and PIN straight away. What are you waiting for?



noda

Be inspired by cinema theatre

Bedford Pantomime Company Presents
Bradford & Webster's

RAPUNZEL

21st December until 1st January

Tickets

Single : £14 Family : £48

Box Office 01234 718044



ACCESS

General Access

The Higgins Bedford has step free access to all levels. Wheelchairs, mobility scooters, pushchairs and assistance dogs are all welcome.

Disabled Parking

There are four parking spaces at the entrance of museum for visitors with Accessible Parking Permits or Blue Badges.

Wheelchair Users

There are two adult wheelchairs available to borrow. Ask a member of staff at reception if you would like assistance. There are three wheelchair-accessible toilets.

D/deaf and Hard of Hearing Visitors

Reception areas, meeting and activity rooms are equipped with induction loops, which correspond to the 'T' position on most hearing aids. A portable loop is available for use. The Higgins works with Access Bedford to provide BSL talks, tours and events.

Blind and Partially Sighted Visitors

Large print captions for all of our exhibitions and displays are available throughout the building.

Families with Members with Autistic Spectrum Conditions

An Autism Friendly Guide to the museum is available at reception or download it from the website.

For Families and Young Children

Free hands-on activities for children available in every gallery. There is a separate babychange facility on the ground floor.

EVENTS CALENDAR 2019–2020

Date	Event	Need to book?	Cost	Page no.
12 Sept.	Reminiscence Session – Break a Leg...	No	Free	16
14 Sept.	Wellbeing Saturday	No	Free	17
17 Sept.	The Higgins Knitting Group	No	Free	11
25 Sept.	Portable Antiquities Scheme	No	Free	11
26 Sept	Back Down Memory Lane @ Number Thirteen – Back to School	No	Free	16
5 Oct.	BedPop Fun Palaces	No	Free	11
6 Oct.	BedPop Fun Palaces	No	Free	11
10 Oct.	Reminiscence Session – Dreams and Nightmares	No	Free	16
13 Oct.	Mixed Race People are 'Cultural Negotiators' Panel Discussion with Michelle Balach–Ali	Yes	Free	12
15 Oct.	Friends Lecture: Dr Anne Daye – An Exceeding Good Ball; Dancing in the Life and Novels of Jane Austen	No	£4/£9	21
15 Oct.	The Higgins Knitting Group	No	Free	11
17 Oct.	Fine and Decorative Art Tour	Yes	£5.90 (£4.70)	15
19 Oct.	Wellbeing Saturday	No	Free	17
22 Oct.	Holiday Activities: Spooky Stuff with Art Adventures	Yes	£3	19
23 Oct.	Holiday Activities: Bubble, Bubble, Toil and Trouble with Little Science Labs	Yes	£3	19
24 Oct.	Holiday Activities: Monsters Under the Bed	Yes	£3	19
25 Oct.	Holiday Activities: Halloween Clay Models with Victoria Houghton	Yes	£3	19
26 Oct.	Music Matters: African and Caribbean Heritage Day	No	Free Entry Workshops TBC	12
29 Oct.	Friends Lecture: Barry Venning – Artists' Feuds	No	£4/£9	21
31 Oct.	Haunted Higgins House Tour	Yes	£10	15
31 Oct.	Back Down Memory Lane @ Number Thirteen – Favourite Films and Fright Nights	No	Free	16
6 Nov.	Dreams and Nightmares Gallery Tour	Yes	£3 (£2.50)	4
6 Nov.	RAE Bedford and Concorde by Barry Tomlinson	Yes	Free	8
9 Nov.	A Write at the Museum – A fun day of creative writing with author Derek Niemann	Yes	£10	18
9 Nov.	Children Born to Black GIs and British Women in the Second World War by Professor Lucy Bland	Yes	£5.90 (£4.70)	12
14 Nov.	Home and Abroad Gallery Tour	Yes	£3 (£2.50)	6
14 Nov.	Reminiscence Session – Bedfordshire Folklore and Folk songs	No	Free	16

Date	Event	Need to book?	Cost	Page no.
19 Nov.	The Higgins Knitting Group	No	Free	11
23 Nov.	Wellbeing Saturday	No	Free	17
23 Nov.	Christmas Craft Weekend	No	Free	13
24 Nov.	Christmas Craft Weekend	Yes	£12	13
27 Nov.	Lunchtime Lecture with Professor Christiana Payne – The Dreams	Yes	Free	4
27 Nov.	Portable Antiquities Scheme	No	Free	11
28 Nov.	Social History Collection Tour	Yes	£5.90 (£4.70)	15
28 Nov.	Back Down Memory Lane @ Number Thirteen – Made in Bedford	No	Free	16
30 Nov.	Christmas Craft Weekend	Yes	£12	13
1 Dec.	Museum Shop Sunday	No	Free	13
3 Dec.	Friends Lecture: Christopher Bennett – The Antarctic Explorer, Apsley Cherry-Garrard	No	£4/£9	21
7 Dec.	British Sign Language Exhibition Tour and Workshop with Access Bedford	Yes	Free	4
12 Dec.	Reminiscence Session – Christmas Carols and Traditions	No	Free	16
13 Dec.	Lunchtime Lecture with Victoria Partridge – The Nightmares	Yes	Free	5
17 Dec.	The Higgins Knitting Group	No	Free	11
9 Jan.	Reminiscence Session: Winter Comforts	No	Free	16
14 Jan.	Friends Lecture: Professor Phil Cleaver and Deborah Wolpe – Berthold Wolpe: The Total Man	No	£4/£9	21
15 Jan.	Dreams and Nightmares Gallery Tour	Yes	£3 (£2.50)	4
21 Jan.	The Higgins Knitting Group	No	Free	11
21 Jan.	Holocaust Memorial Day	No	Free	14
23 Jan.	Fine and Decorative Art Tour	Yes	£5.90 (£4.70)*	15
25 Jan.	Wellbeing Saturday	No	Free	17
26 Jan.	The Legacy of Anne Frank by Gillian Walnes Perry MBE	No	£5.90 (£4.70)*	14
29 Jan.	Portable Antiquities Scheme	No	Free	11
1 Feb.	Dreams and Nightmares Study Day	Yes	£12 (+£3 Trans. Fee)	5
11 Feb.	Friends Lecture: Hugh Belsey – The Grand Tour	No	£4/£9	21
13 Feb.	Archaeology Collection Tour	Yes	£5.90 (£4.70)*	15
13 Feb.	Reminiscence Session: Vintage Silver Screen	No	Free	16
15 Feb.	OUTing the Past Festival	No	Free	14
18 Feb.	The Higgins Knitting Group	No	Free	11

Date	Event	Need to book?	Cost	Page no.
18 Feb.	Holiday Activities: Sweet Dreams	Yes	TBC	19
19 Feb.	Holiday Activities: Sweet Dreams	Yes	TBC	19
20 Feb.	Holiday Activities: Sweet Dreams	Yes	TBC	19
21 Feb.	Holiday Activities: Sweet Dreams	Yes	TBC	19
22 Feb.	Wellbeing Saturday	No	Free	17
4 March	Dreams and Nightmares Gallery Tour	Yes	£3 (£2.50)	4
5 March	Fine and Decorative Art Tour	Yes	£5.90 (£4.70)*	15
7 March	BedPop Science Lab	No	Free	11
11 March	Reminiscence Session: Terrific vs. Terrible Technology	No	Free	16
17 March	Friends Lecture: Bob Hook – Swifts: The Fastest Birds on the Planet	No	£4/£9	21
17 March	The Higgins Knitting Group	No	Free	11
21 March	Wellbeing Saturday	No	Free	17
25 March	Portable Antiquities Scheme	No	Free	11
7 April	Holiday Activities: Under the Same Sky	Yes	TBC	19
8 April	Holiday Activities: Under the Same Sky	Yes	TBC	19
9 April	Holiday Activities: Under the Same Sky	Yes	TBC	19
14 April	Holiday Activities: Under the Same Sky	Yes	TBC	19
14 April	Friends Lecture: Paul Middleton – The Art of John Seymour Lindsay	No	£4/£9	21
15 April	Holiday Activities: Under the Same Sky	Yes	TBC	19
16 April	Holiday Activities: Under the Same Sky	Yes	TBC	19
16 April	Reminiscence Session: Favourite Family Recipes	No	Free	16
21 April	The Higgins Knitting Group	No	Free	11
23 April	Bawden Archive Session	Yes	£5.90 (£4.70)*	9
5 May	Friends Lecture: James Russell – Tirzah Garwood	No	£4/£9	21
27 May	Portable Antiquities Scheme	No	Free	11
29 July	Portable Antiquities Scheme	No	Free	11

*Note: All prices marked with an * may be subject to change from 1 January. Prices are reviewed annually.

CONTACT US

Opening hours

Tuesday to Saturday
11am – 5pm

Sunday and Bank
Holiday Mondays 2 – 5pm

Closed on Mondays,
Good Friday, Christmas
Day, Boxing Day and
New Year's Day

Entrance is free
Donations are welcome

Visit the website at

www.thehigginsbedford.org.uk

Email thehiggins@bedford.gov.uk

or call us on 01234 718618

Stay in touch...



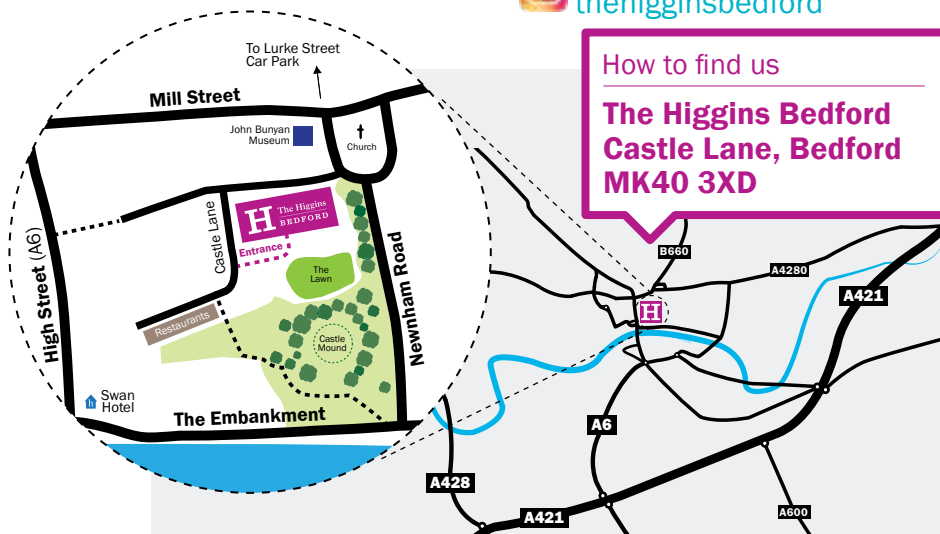
On Facebook
[thehigginsbedford](https://www.facebook.com/thehigginsbedford)



On Twitter
[higginsbedford](https://twitter.com/higginsbedford)



On Instagram
[thehigginsbedford](https://www.instagram.com/thehigginsbedford)



Parking

The nearest public car park is at Lurke Street, just 5 minutes walk from The Higgins Bedford. Two hours **free** parking every Saturday in all Council-owned town centre car parks. Further information is available at www.bedford.gov.uk/parking. There are limited parking spaces at the entrance of The Higgins Bedford for visitors with Accessible Parking Permits or Blue Badges.

The Higgins Bedford is a Bedford Borough Council Cultural Service. Home of the Cecil Higgins Collection.

CUL041_19

design@bedford.gov.uk