

Proposed Service Reductions for Fiscal Year 2026

Types of service reductions proposed:

- **ROUTE ELIMINATION:** This route would no longer exist.
- **MAJOR REDUCTION:** Reduction of 30% or more weekly service hours due to fewer daily trips and/or a shortened route.
- **MINOR REDUCTION:** Reduction of less than 30% of weekly service hours due to fewer daily trips.

Major Service Reductions – the following are proposed as major service reductions to be implemented with the February 2026 service changes.

ROUTE ELIMINATIONS (Count: 41)

- Light-Rail Routes: Silver Line
- Bus Routes: 2, 4, 7, 14, 18, 19L, 20, 26, 29, 36, 38, 39, 40, 41, 43, 51L, 52L, 53L, 58, 65, 71, G3, G31, O1, O5, O12, P7, P10, P12, P13, P16, P17, P67, P69, P71, P76, Y1, Y45, Y47, Y49

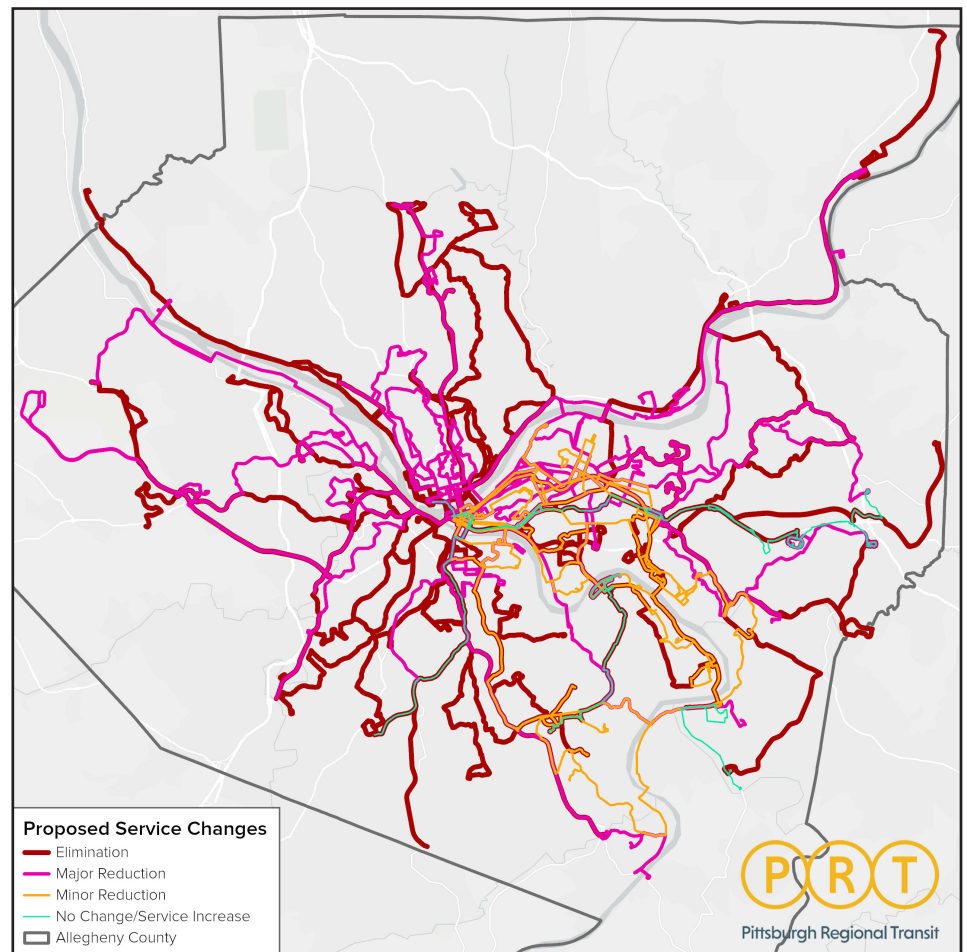
MAJOR FREQUENCY REDUCTIONS (IN NUMBER OF TRIPS) (Count: 33)

- Bus Routes: 1, 6, 8, 11, 12, 13, 15, 16, 17, 21, 22, 24, 27, 28X, 31, 44, 54, 56, 64, 69, 74, 75, 77, 79, 81, 82, 87, 88, 91, G2, P68, P78, Y46

MAJOR COVERAGE REDUCTIONS (IN LENGTH OF ROUTE) (Count: 4)

- Light-Rail Routes:
 - Red Line: Route shortened to Overbrook Junction to Allegheny Station
- Bus Routes:
 - 28X: Route shortened to PIT Airport to Carnegie Station
 - 44: Route shortened to Kohne Street and Fisher Street in St. Clair to South Hills Junction
 - 69: Route shortened to Wilmerding to Wilkinsburg Station.

Proposed Service Reduction



Continued on opposite side.

The proposal also includes the following minor service changes to be implemented with the February 2026 service changes.

No formal public comment period, hearing and/or PRT Board action is required for these proposed minor services changes, but they are included here for transparency and completeness purposes.

MINOR SERVICE REDUCTIONS
(No Board action required) (Count: 20)

- Incline Routes: Monongahela Incline
- Bus Routes: 48, 51, 55, 57, 59, 83, 86, 89, 93, 61A, 61B, 61C, 61D, 71A, 71B, 71C, 71D, P1, P3

ROUTES WITH NO CHANGES
(No PRT Board action required) (Count: 2)

- Bus Routes: 60, 67

SERVICE INCREASE TO SUPPLEMENT REDUCTION ON OTHER ROUTES (No PRT Board action required) (Count: 2)

- Light-Rail Routes: Blue Line (Expanding span of service on weekends to replace lost Silver Line coverage on the Overbrook Line)
- Bus Routes: 53 (Addition of weekday service to replace lost 53L)

OTHER REDUCTIONS (No PRT Board action required)

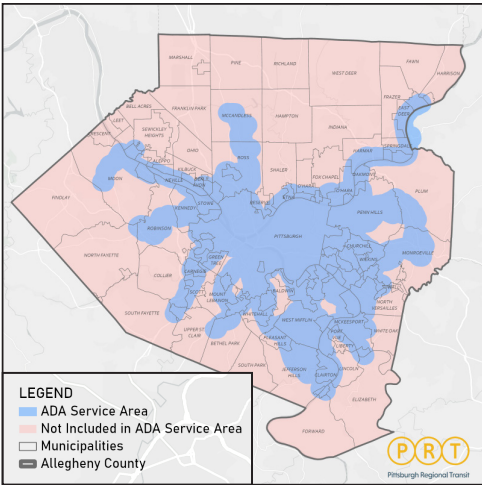
- No special services to serve major sports and cultural events
- No special services to support the April 2026 NFL Draft being hosted in Pittsburgh
- No services to begin after 11pm any day of the week on any route

PRT will also have to raise the cost of transit fares.

A base 3-hour fare would increase from \$2.75 to \$3.00, a day pass would increase from \$7 to \$7.50, a 7-day pass would increase from \$25 to 27.00, a 31-day pass would increase from \$97.50 to \$106.50, and an annual pass would increase from \$1,072.50 to \$1,171.50.

PROPOSED FIXED ROUTE (bus, light rail, incline) FARE INCREASES

	Current Fare	Proposed Fare Increase	Proposed Fare	Percentage Increase
Cash	\$2.75	\$0.25	\$3.00	9%
Stored Value Full Fare	\$2.75	\$0.25	\$3.00	9%
3-hour Full Fare Pass	\$2.75	\$0.25	\$3.00	9%
Day Pass	\$7.00	\$0.50	\$7.50	7%
7-day Pass Full Fare	\$25.00	\$2.00	\$27.00	8%
31-Day Pass Full Fare	\$97.50	\$9.00	\$106.50	9%
Annual Pass	\$1,072.50	\$99.00	\$1,171.50	8%



ACCESS Paratransit Service Reductions and Fare Increases

PRT will enforce the Americans with Disabilities Act (ADA) service area for eligible individuals. Proposed reductions in fixed route bus service takes some areas out of the ADA service area that is eligible for ACCESS and puts them into an area where service for people with disabilities could have trip denials and where reservations would not be guaranteed. This would result in a reduction in the ADA service area of 62%, 16% of which is due to the change in fixed route services. Service would not be available after 11 p.m. all days of the week. PRT will also have to raise the costs of taking ACCESS, often referred to as fares.

Trip Distance	Current General Public Fare	Proposed General Public Fare	Eligible Rider Current Fare	Eligible Rider Proposed Fare	Change in Eligible Rider Fare	Percent Change in Eligible Rider Fare
Shorter	\$21.00	\$26.00	\$3.15	\$3.90	\$0.75	24%
Medium	\$26.00	\$30.00	\$3.90	\$4.50	\$0.60	15%
Longer	\$35.00	\$40.00	\$5.25	\$6.00	\$0.75	14%

