



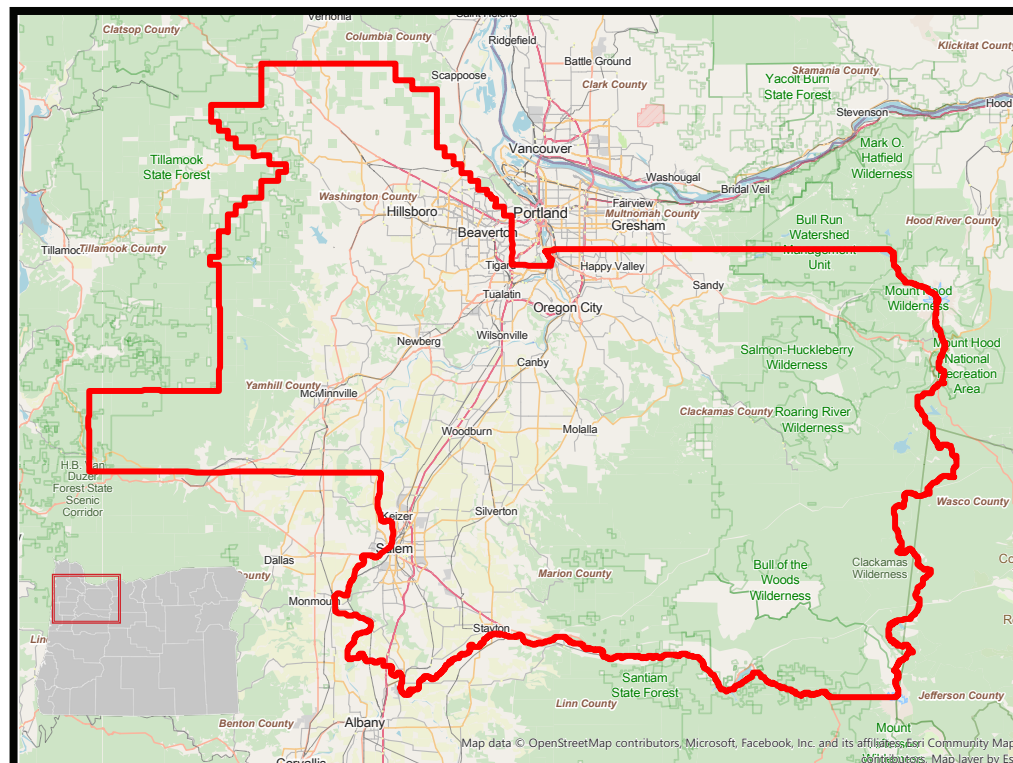
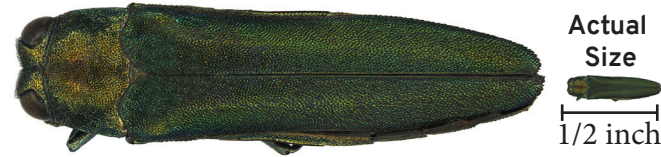
# EMERALD ASH BORER QUARANTINE ALERT



**OREGON  
DEPARTMENT OF  
AGRICULTURE**

**WASHINGTON, YAMHILL, MARION, CLACKAMAS COUNTIES, OREGON**

**A permanent quarantine is now in effect.** Emerald ash borer (EAB) has been confirmed in three new counties, triggering an expansion of the quarantine. Tree materials of ash, olive, and white fringe tree, must remain within quarantined counties (Washington, Yamhill, Marion, Clackamas). Wood waste must be processed accordingly and disposed of.



## Regulated Ash, Olive, & White Fringe Tree Materials

- Nursery stock
- Scion wood
- Bud wood
- Logs
- Roots and branches
- Stumps
- Green lumber
- Chips and mulch
- Firewood of hardwood species

## Quarantine Exceptions

- Nurseries or groups that have a formal compliance agreement with ODA
- Seeds and leaves
- Processed lumber kiln dried, free of bark and material 1 inch below bark.
- Finished wood products without bark, including furniture, baskets, and baseball bats

## April 1 - September 30

Avoid felling ash, olive and white fringe trees, including branches, and stumps. Hazardous trees can be mitigated at any time. Chip or process as soon as possible on site. Avoid moving any woody material.

## October 1 - March 31

Conduct tree removal and pruning during this time period. Transport trees and parts of trees to a facility within the quarantine zone where it will be processed before April 1st.

**Quarantine Boundary Map:** *Quarantine applies to all of the infested counties, including federal, state, commercial, and private lands.*

## Treatment Options for Regulated Materials

- Live plant material is eligible for compliance agreements with ODA if one of the following conditions is met:
  - Diameter at the base of the plants is less than 0.75 inches
  - Plants were grown in a greenhouse approved by the ODA
  - Plants have been properly treated with an approved insecticide
- Debark wood and remove at least 1 inch of underlying wood
- Grind or chip to 1 inch or less
- Heat wood to a minimum of 140°F for at least 60 minutes
- Bury under at least 12 inches of topsoil
- Incinerate wood materials
- Secondary processing to produce wood by-products (i.e. paper)
- Other methods specified within a compliance agreement with ODA

For more information please visit [www.OregonEAB.com](http://www.OregonEAB.com),  
To subscribe to the EAB email list visit [ODA.FYI/subscribe](mailto:ODA.FYI@oda.gov)

For questions please email us at [EAB@oda.oregon.gov](mailto:EAB@oda.oregon.gov) or call 503-986-4636  
Oregon Department of Agriculture • 635 Capitol St NE, Salem, OR 97301 • 1-800-525-0137

# EMERALD ASH BORER (EAB) PERMANENT QUARANTINE



**OREGON  
DEPARTMENT OF  
AGRICULTURE**

## EAB Quarantine Frequently Asked Questions.

- **Can regulated material be moved within the quarantine?**  
Movement of EAB hosts within the quarantine area (Washington, Yamhill, Marion and Clackamas counties) is permitted. Ash, olive, and white fringe trees can be sold, given away, or planted, as long as they remain within the quarantine boundaries.
- **Why are we concerned?**  
EAB kills ash and white fringe trees and can damage olive trees. To slow the spread of EAB, ODA is placing a quarantine on infested Counties to restrict the movement of tree materials that may spread EAB to new areas in the state.
- **What is a quarantine? What are the consequences for not adhering to the quarantine?**  
Quarantine is the legal enforcement of actions that help slow the spread of pests to new areas or that prevent them from multiplying where they have already gained entry. For this reason, ODA is implementing a permanent EAB quarantine as per Oregon Administrative Rule (OAR 603-052-1075). Non-compliance will result in the spread of EAB and civil penalties of up to \$10,000 as provided by ORS 570.995
- **What do I need to do?**  
Nurseries train staff to identify signs of EAB and report sightings to ODA. Communicate clearly to the purchaser that host plants are required to remain within the quarantine boundaries. Inspect EAB host plants prior to moving them within the quarantine zones, and inspect mother trees.

If you see symptoms or signs of EAB infestation please call 1-866-INVADER or contact ODA at: [EAB@oda.oregon.gov](mailto:EAB@oda.oregon.gov)

## Ash Tree ID

- Compound leaves with 5-11 leaflets
- Unstaggered opposite branching
- Diamond shape bark pattern
- Seeds are oar-shaped samaras



**Oregon Ash leaf**  
Photo: Jordon Bartosz

## Signs & Symptoms of EAB

- Crown dieback in heavily infested trees
- D-shaped emergence holes in bark about 0.118 inch (3mm) in size.
- Sucker shoots emerging from trunk
- S-shaped galleries underneath the bark
- Bark splitting found on trunk or branches
- Woodpecker activity
- The tree is dying from top down



D-shaped emergence hole



Bark splitting



S-shaped galleries

## Additional Resources

Example compliance agreement  
[ODA.direct/EABComplianceAgreement](#)

Pesticides approved for use against EAB  
[ODA.direct/EABpesticides](#)

For more information please visit [www.OregonEAB.com](http://www.OregonEAB.com)

To subscribe to the EAB email list visit [ODA.FYI/subscribe](http://ODA.FYI/subscribe)

For questions please email us at [EAB@oda.oregon.gov](mailto:EAB@oda.oregon.gov) or call 503-986-4636

Oregon Department of Agriculture • 635 Capitol St NE, Salem, OR 97301 • 1-800-525-0137