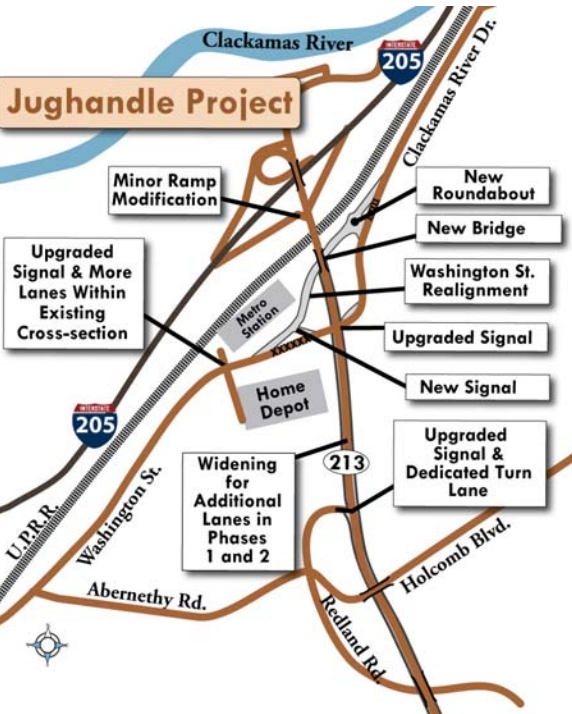


What is the Jughandle Project?

The City of Oregon City, in partnership with ODOT, is constructing improvements to Highway 213, Washington Street, Clackamas River Drive, and Redland Road. The improvements are designed to reduce congestion, enhance safety, and increase capacity to accommodate current traffic demands and future growth.

The signature component of the project is construction of a “jug handle” shaped roadway configuration. The intersection of Highway 213, Washington Street, and Clackamas River Drive will be reconstructed and Washington Street realigned to pass under Highway 213 immediately south of the existing railroad bridge.



This new looping roadway configuration will enable motorists to travel to and from Highway 213, Washington Street, and Clackamas River Drive without making left turns across the highway that stop the flow of traffic. The new underpass will also provide a significantly safer east-west crossing for bicyclists and pedestrians.

Other features of the Jughandle Project include the addition of a third northbound travel lane on Highway 213 from just north of Redland Road to the northbound I-205 ramps, a dedicated right turn lane from Redland Road to Highway 213, and sidewalks on Washington Street.

82% of the funding for the \$26.8 million project is from the Oregon Jobs and Transportation Act. The remaining budget comes from Federal and City funds. Construction is scheduled to be complete by spring 2013.

The Jughandle Project will provide 20-30% excess traffic capacity on Highway 213 south of the I-205 interchange for immediate congestion relief and at least 20 years of expected growth.

Postal Customer
97045

To learn more, visit
the project website:
www.jughandleproject.com

FOUR-DAY (104-HOUR)
CLOSURE OF HIGHWAY 213
BETWEEN WASHINGTON
STREET & NORTHBOUND
I-205 ON/OFF RAMP
8 p.m. Thursday, March 22
until 4 a.m. Tuesday, March 27



City of Oregon City
625 Center Street
PO Box 3040
Oregon City, OR 97045



PRSR STD
US POSTAGE PD
OREGON CITY OR
PERMIT #23



www.jughandleproject.com

Highway 213
Jughandle Project NEWS



February 2012

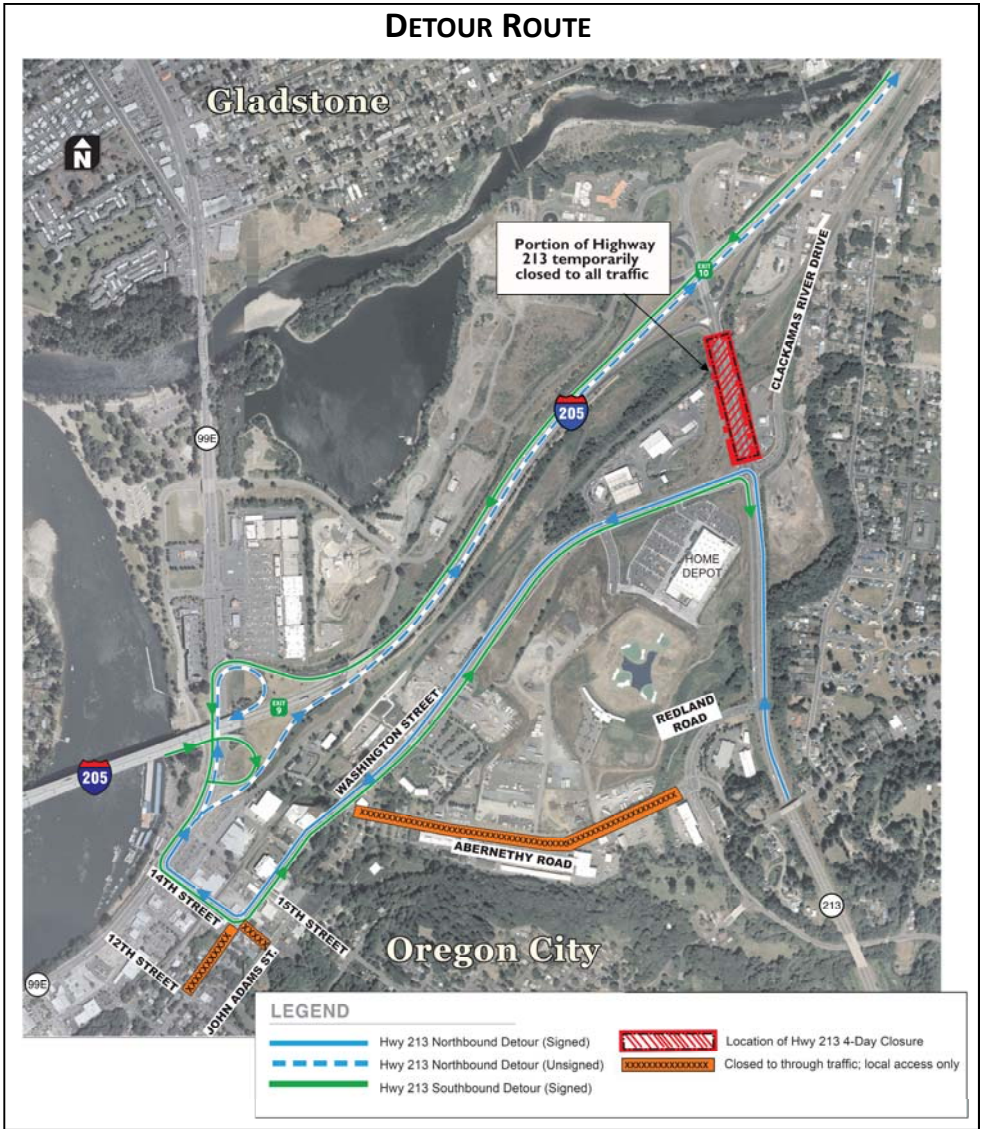
FOUR-DAY (104-HOUR) CLOSURE SCHEDULED

Closure of Highway 213 between Washington Street and northbound I-205 on/off-ramps expected to begin at 8:00 p.m. on Thursday, March 22, 2012 and end by 4:00 a.m. on Tuesday, March 27, 2012

The City of Oregon City’s Jughandle Project will reach a major construction milestone in late March when the contractor will install a new bridge on Highway 213. The contractor will slide the bridge into place over a four day, five night period using a rapid bridge construction technique. To complete the bridge installation safely, the Oregon Department of Transportation (ODOT) will temporarily close Highway 213 between the Washington Street/Clackamas River Drive intersection and the northbound

I-205 on/off ramps. This portion of the highway is scheduled to be closed to all traffic, including bicyclists and pedestrians, from 8:00 p.m. on Thursday, March 22, 2012 through 4:00 a.m. on Tuesday, March 27, 2012. A signed detour route (shown at left) will be in place during the temporary closure.

Motorists are strongly encouraged to plan ahead and avoid traveling through the area during the temporary closure if possible. Heavy traffic congestion on the designated detour route, as well as local alternate routes, is expected. Long traffic delays are also likely on I-205, Highway 99E/McLoughlin Boulevard, and local roadways in Oregon City.



Rapid Bridge Construction

Innovative technique reduces traffic delays

The contractor began building the new Highway 213 bridge superstructure next to the highway last fall where its construction has had little to no impact on traffic. By late March, the bridge will be ready to move into its permanent position, and the contractor will work around the clock to complete its installation.

The four-day/five-night process will begin by removing an approximately 130-foot long section of roadway on Highway 213. This includes excavating approximately 900 cubic yards of asphalt and between 6,000 and 8,000 cubic yards of material underneath the existing roadway.

Next, a system of rollers, roller guides, and winches will be used to slide the bridge superstructure into position over the new permanent foundations. The contractor will then use hydraulic jacks to uniformly lift and lower the bridge into place. The connection between the bridge and its supports will be secured and the roadway paved, allowing vehicles to cross the new bridge by 4:00 a.m. on Tuesday, March 27th.

Once the bridge is in place and the highway is reopened, the contractor will work on completing the realignment of Washington Street under the new bridge.



The new bridge, currently under construction on the west side of the highway, will slide into its permanent position.



A realigned Washington Street, shown at right and in the artist rendition above, will pass under the bridge.

Watch the rapid bridge construction online!

Live pictures from the construction site are uploaded every 15 minutes and you can watch time-lapse videos of the progress.
www.jughandleproject.com/constructioncam



About the Contractor



The contractor for this project is Mowat Construction Company. Mowat's Jughandle Project team, based in Clackamas County, includes 34 employees and more than 10 specialty subcontractor firms. The City awarded the construction contract to Mowat based on the company's expertise with complex bridge projects, past success completing extensive night-work projects on time, and competitive bid price.

Learn more about Mowat and other members of the project team at www.jughandleproject.com/meettheteam.

More than 100 jobs are estimated to result or directly benefit from this project's construction, thanks to funding from the 2009 Oregon Jobs and Transportation Act



Q&A

Why use rapid bridge construction?

The rapid bridge construction process enables the contractor to keep every Highway 213 travel lane open in the daytime during all but four days of the nearly two-year construction project. It also shortens the total duration of project construction by approximately six months.

Traditional bridge construction methods would have required unacceptable traffic impacts—closing at least two travel lanes on Highway 213 all day and night for 12 to 16 months. This would have resulted in severe traffic backups every day for more than a year!

Why is this work happening while the Arch Bridge is closed?

Construction of the Jughandle Project began after the state provided funding through the Jobs and Transportation Act (JTA). JTA funding was provided for immediate use on projects that would put Oregonians back to work.

The new bridge on Highway 213 must be in place before other Jughandle Project improvements can be constructed, including the realignment of Washington Street under the new bridge. This construction sequence means that installation of the new bridge, and the accompanying four-day closure, must occur while the Arch Bridge is still closed.

Could the dates of the temporary closure change?

There is a possibility that extreme winter weather could prevent the rapid bridge con-

struction from occurring in late March. If the work and temporary closure need to be rescheduled, the media will be alerted and updates will be posted on www.jughandleproject.com.

If the work must be rescheduled, the temporary closure will still occur over a Friday-Saturday-Sunday-Monday time period to minimize traffic impacts.

Can trucks use the detour route?

Standard sized trucks (WB-67s that are 65 feet long from the front to the rear axle) will be able to follow the designated detour route. Flaggers stationed at the Washington Street/14th Street intersection will stop other traffic to allow trucks to use all travel lanes at the intersection to safely complete turns.

Businesses are strongly encouraged to plan ahead so that travel through the area is not necessary during the temporary closure.

For More Information

www.jughandleproject.com



The City's project website features maps, a live construction camera, and

regular construction updates. You can also send questions to the project team and sign up to receive project updates by email.

www.tripcheck.com



ODOT's TripCheck provides incident and alert informa-

tion for state highways, including Highway 213.

[www.twitter.com/TripCheckPDX](https://twitter.com/TripCheckPDX)



To receive closure updates and other incident information from ODOT on your mobile device, sign up for the TripCheck Twitter feed that covers Highway 213: Trip-CheckPDX.

Is there a place to watch the rapid bridge construction?

There is no safe place on site for the public to view the rapid bridge construction. The best way to see the bridge slide is to use the time-lapse video option for the online construction camera at www.jughandleproject.com/constructioncam.