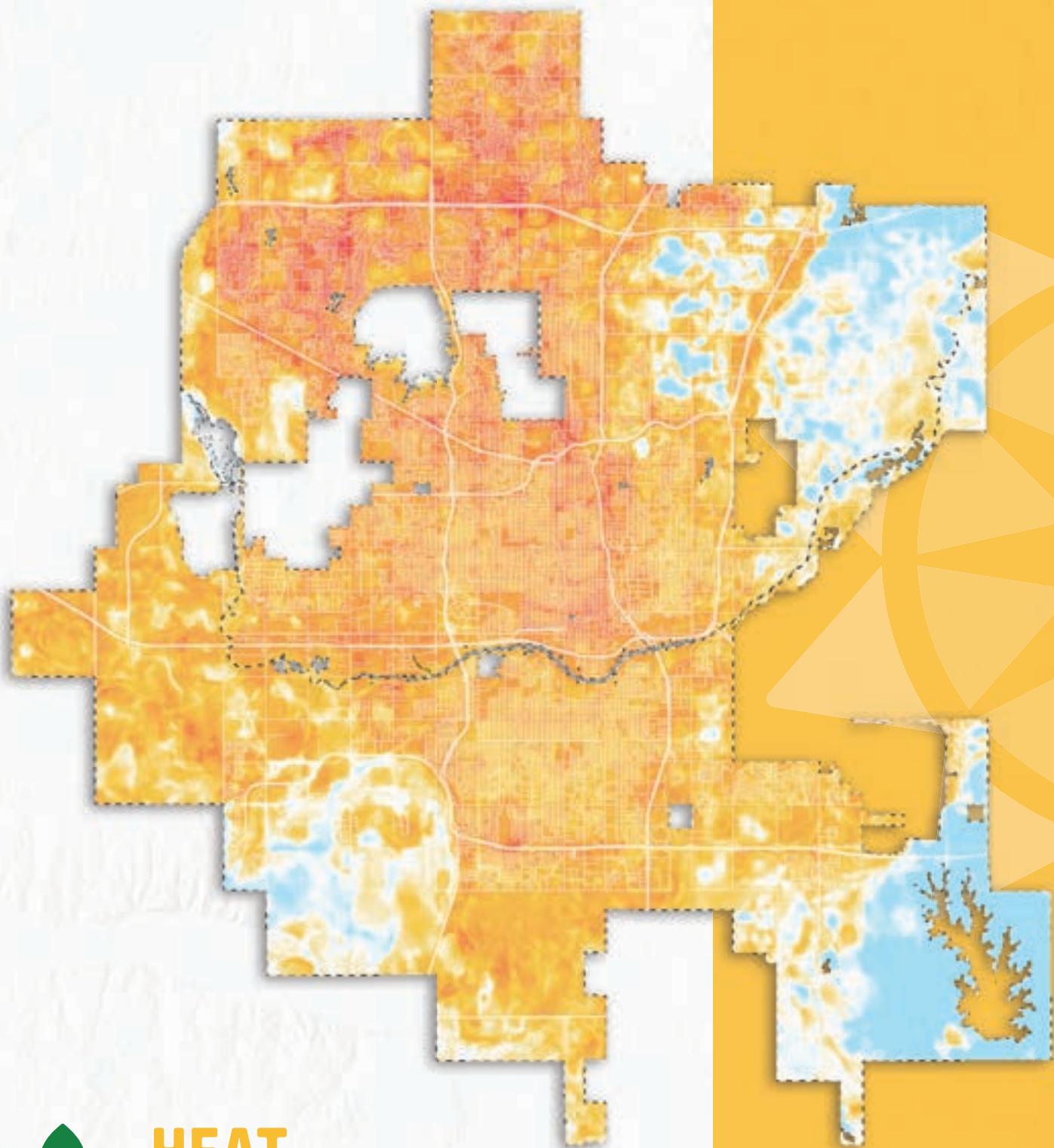


Oklahoma City

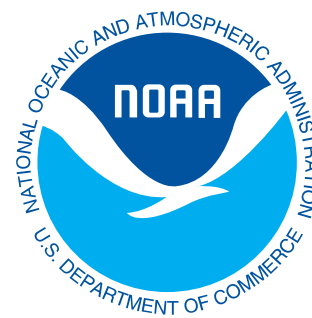
Oklahoma



**HEAT
WATCH**
Report

Acknowledgements

The CAPA Heat Watch program, equipment, and all related procedures referenced herein are developed through a decade of research and testing with support from national agencies and several universities. Most importantly, these include our partners at the National Integrated Heat Health Information System, the National Oceanic and Atmospheric Administration's (NOAA's) Climate Program Office, and National Weather Service, including local weather forecast offices at each of the campaign sites, The Science Museum of Virginia, and U.S. Forest Service (USDA). Past support has come from Portland State University, the Climate Resilience Fund, and the National Science Foundation. We are deeply grateful to these organizations for their continuing support.



Heat Watch Oklaoma City was conducted as part of the CAPA-NIHHIS 2023 Heat Mapping Campaign. Learn more about the campaign and this public-private partnership [here](#).



Table of Contents

4	Executive Summary	
6	Welcome	
7	Process	
8	Maps	
17	Modeling Method	
18	Technical Notes	
19	Media	
21	Next Steps	
24	Frequently Asked Questions (FAQ)	

8	About the Maps
9	Morning Traverse Points
10	Morning Area-Wide
11	Afternoon Traverse Points
12	Afternoon Area-Wide
13	Evening Traverse Points
14	Evening Area-Wide
15	Average Area-Wide
16	Initial Observations

We know that extreme heat is the most deadly of all natural disasters and that its impacts are not evenly distributed across people and places. Location matters. Those who live in historically disinvested neighborhoods, with limited access to resources and greenspace, and those struggling with additional health concerns are all at greater risk when it comes to the impacts of extreme heat. Our infrastructure systems (e.g. energy, transportation) are also at risk, which can further compromise a region's capacity to provide essential cooling resources. Heat Watch provides a new level of detail about where heat is most concentrated across cities, improving on coarse satellite-derived descriptions and better describing the human experience of heat.

Accomplishing this high level of detail and spatial coverage is only made possible by the efforts of campaign organizers and local volunteer data collectors, who co-designed a mobile monitoring study with CAPA to measure heat across the diverse land uses and geographical features of your region. Heat-focused partnerships emerged between local stakeholders like residents, municipal staff, health officials, emergency responders, researchers, and non-profit organizations. Throughout the process, teams learned about the Urban Heat Island (UHI) effect in their area and raised awareness of the issue through training, discussions, and media coverage.



Oklahoma City Heat Watch Training Session

Heat Watch is one step in the journey towards adaptation to extreme heat. By bridging innovations in community climate action, sensor technology, and spatial analytics, together we have achieved two main objectives:

- 1 Developed high resolution descriptions of the distribution of ambient (air) temperature and humidity (heat index) across your region; and
- 2 Engaged local communities to create partnerships to better understand and address the inequitable risks posed by extreme heat.

The results provide a snapshot in time of how urban heat varies across neighborhoods and how local landscape features affect temperature and humidity. In this report we present the process, mapping outputs, media coverage and photographs from Heat Watch, as well as next steps for how to build on the results.

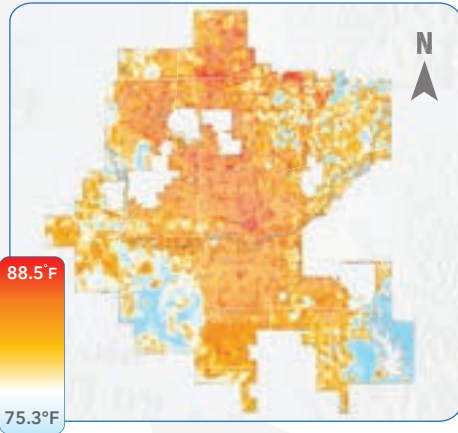


Executive Summary

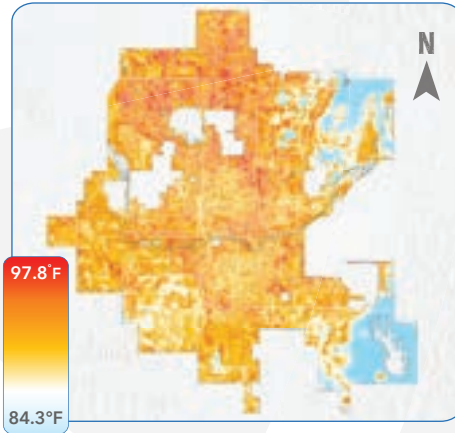
The results presented in this report are the traverse point data - the heat measurements collected by participants - and 'area-wide models' which are generated through analysis of the traverse points and their surrounding landscape features. We focus primarily here on temperature to establish a baseline of the results, while relative humidity and heat index results are available separately.

In reviewing the results, please note that while absolute temperatures (e.g. 90.1°F) are provided, we recommend focusing on the distribution of temperatures (e.g. top 20% hottest areas) within each time period. As temperatures rise, the hottest places are likely to remain the hottest. The report also includes an 'Average Model' combining all three time periods as well as a Frequently Asked Questions section with further detail on the data, models and visuals produced.

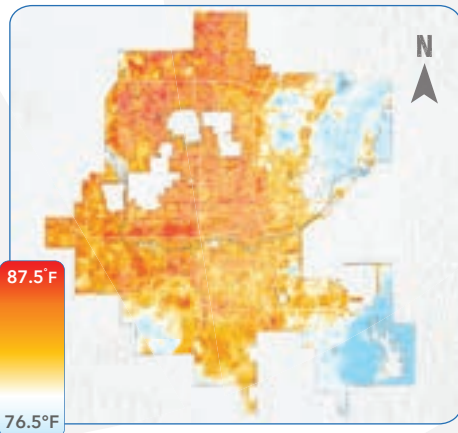
Morning Area-Wide Predictions (6 - 7 am)



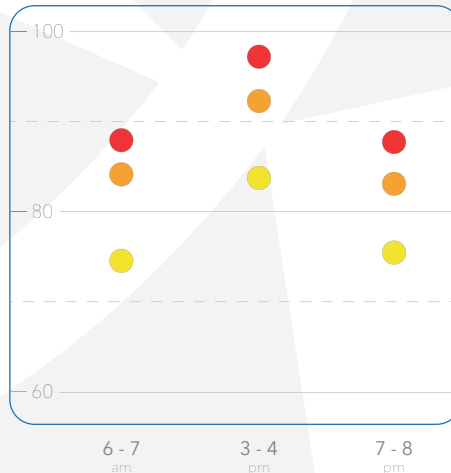
Afternoon Area-Wide Predictions (3 - 4 pm)



Evening Area-Wide Predictions (7 - 8 pm)



Traverse Points (°F)



Study Date

August 12th, 2023

350 mi²
Study Area

112
Volunteers

33
Routes

223,852
Measurements

98.1°
Max Temperature

14.7°
Max Temperature
Differential





Welcome

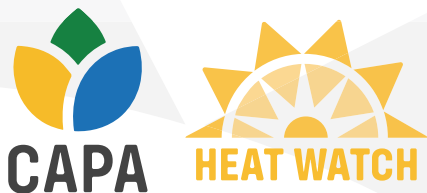


Congratulations and thank you to all of the organizers and participants of Heat Watch Oklahoma City! After weeks of planning and coordination, local partners successfully completed their heat mapping campaign by collecting thousands of temperature and humidity data points in the morning, afternoon and evening of a long, hot day on August 12th, 2023. Using this information, CAPA analysts were able to generate highly detailed models of urban heat across the study region and throughout the day.

With this new information, local decision makers will be better equipped to safeguard human life against the growing impacts of extreme heat. Heat Watch serves as an essential part of a broader 'heat planning' framework that provides a comprehensive approach for adaptation to heat. When situated with local contextual information that describes social, physical and economic conditions, Heat Watch data can help to identify people and places at highest risk to extreme heat and drive appropriate intervention strategies and policies.



CAPA Strategies is a team of analysts, planners and social scientists who recognize the need for holistic, data-driven, and equity-focused approaches to climate action. Heat Watch is one tool in a systematic process for identifying risks and advancing actions for local adaptation to our warming planet. Through collaborative and community-based approaches such as this, we envision a more connected, informed and climate resilient region.



Process

CAPA Strategies has developed the Heat Watch campaign process over several iterations, with methods well established through peer-reviewed publications¹, testing, and refinement.

The current campaign model requires leadership by local organizers, who engage community groups, new and existing partner organizations, and the media in generating a dialog about effective solutions for understanding and addressing extreme heat.

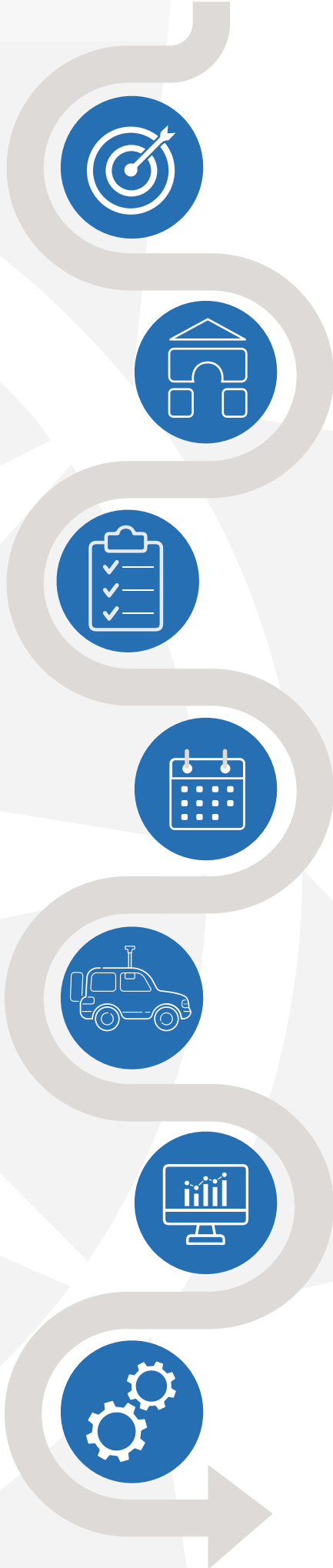
CAPA provides training, equipment, and support to the recruited community groups as they endeavor to collect primary temperature and humidity data across a metropolitan region.

The seven main steps of the campaign process are summarized to the right. An overview of the analytical modeling methodology is presented later in this report and described at full length in peer-reviewed publications.

¹ The most relevant and recent publications to the Heat Watch campaign process include:

Shandas, V., Voelkel, J., Williams, J., & Hoffman, J., (2019). Integrating Satellite and Ground Measurements for Predicting Locations of Extreme Urban Heat. *Climate*, 7(1), 5. <https://doi.org/10.3390/cli7010005>

Voelkel, J., & Shandas, V. (2017). Towards Systematic Prediction of Urban Heat Islands: Grounding Measurements, Assessing Modeling Techniques. *Climate*, 5(2), 41. <https://doi.org/10.3390/cli5020041>



1. Goal Setting

Campaign organizers determine the extent of their mapping effort, prioritizing areas experiencing environmental and social justice inequities. CAPA then divides this study area into routes, each containing a diverse set of land uses and land covers.

2. Engagement

Organizers recruit volunteers, often via non-profits, universities, municipal staff, youth groups, friends, family, and peers. Meanwhile, CAPA designs the data collection routes by incorporating important points of interest such as schools, parks, and community centers.

3. Training

Volunteers attend a training session to learn the why and how of the project, their roles as data collectors, and to share their personal interest in the project. Participants sign a liability and safety waiver, and organizers assign teams to each polygon and route.

4. Activation

With the help of local forecasters, organizers identify a high-heat, clear day (or as near to one as possible) and coordinate with their volunteer teams. Once confirmed, CAPA ships the sensor equipment and bumper magnets to be distributed to campaign participants.

5. Execution

Volunteer teams conduct the heat campaign by driving sensor equipment along pre-planned traverse routes at coordinated hour intervals. Each second the sensors collect a measurement of ambient temperature, humidity, longitude, latitude, speed and course.

6. Analysis

Organizers collect and return the equipment, and CAPA analysts begin cleaning the data, as described in the Mapping Method section below, and utilize machine learning algorithms to create predictive area-wide models of temperature and heat index for each traverse.

7. Implementation

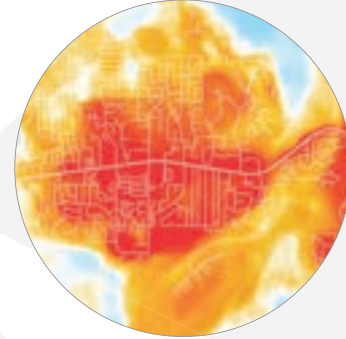
Campaign organizers and participants review the Heat Watch outputs (datasets, maps, and report), and campaign teams meet with CAPA to discuss the results and next steps for addressing the distribution of extreme heat in their community.

About The Maps

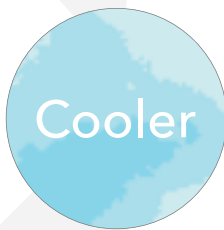
The following sections present results from the campaign: traverse point measurements and area-wide models at morning, afternoon and evening. Below are several key details to keep in mind as you view the results.



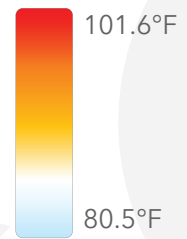
Traverse point maps present the near-surface air temperature measurements gathered during the campaign, filtered to usable data for modeling.



Area-wide maps present high resolution models of temperature across the study area based on the traverse points and Sentinel-2 spectral imagery.



The data are classified by natural breaks in order to clearly illustrate the variation between warmer (red) and cooler (blue) areas across the map.



Note that the scales are different between the traverse point and area-wide maps due to the predictive modeling process.

How does your own experience with heat in these areas align with the map?

Find your home, place of work, or favorite park on the maps and compare the heat throughout the day to your personal experience.

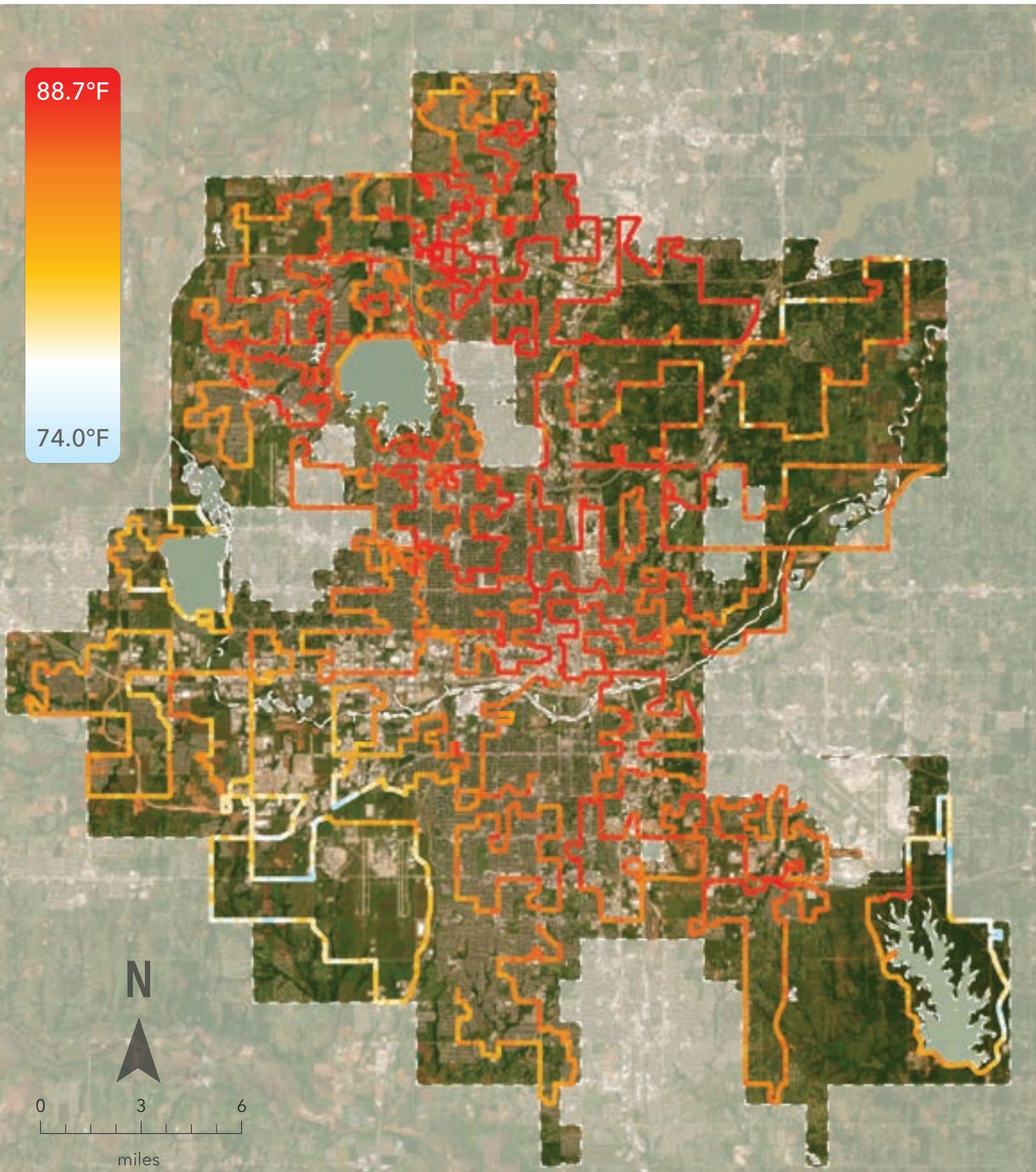


What about the landscape (trees, concrete buildings, riverside walkway) do you think might be influencing the heat in this area?



Morning Traverse Points

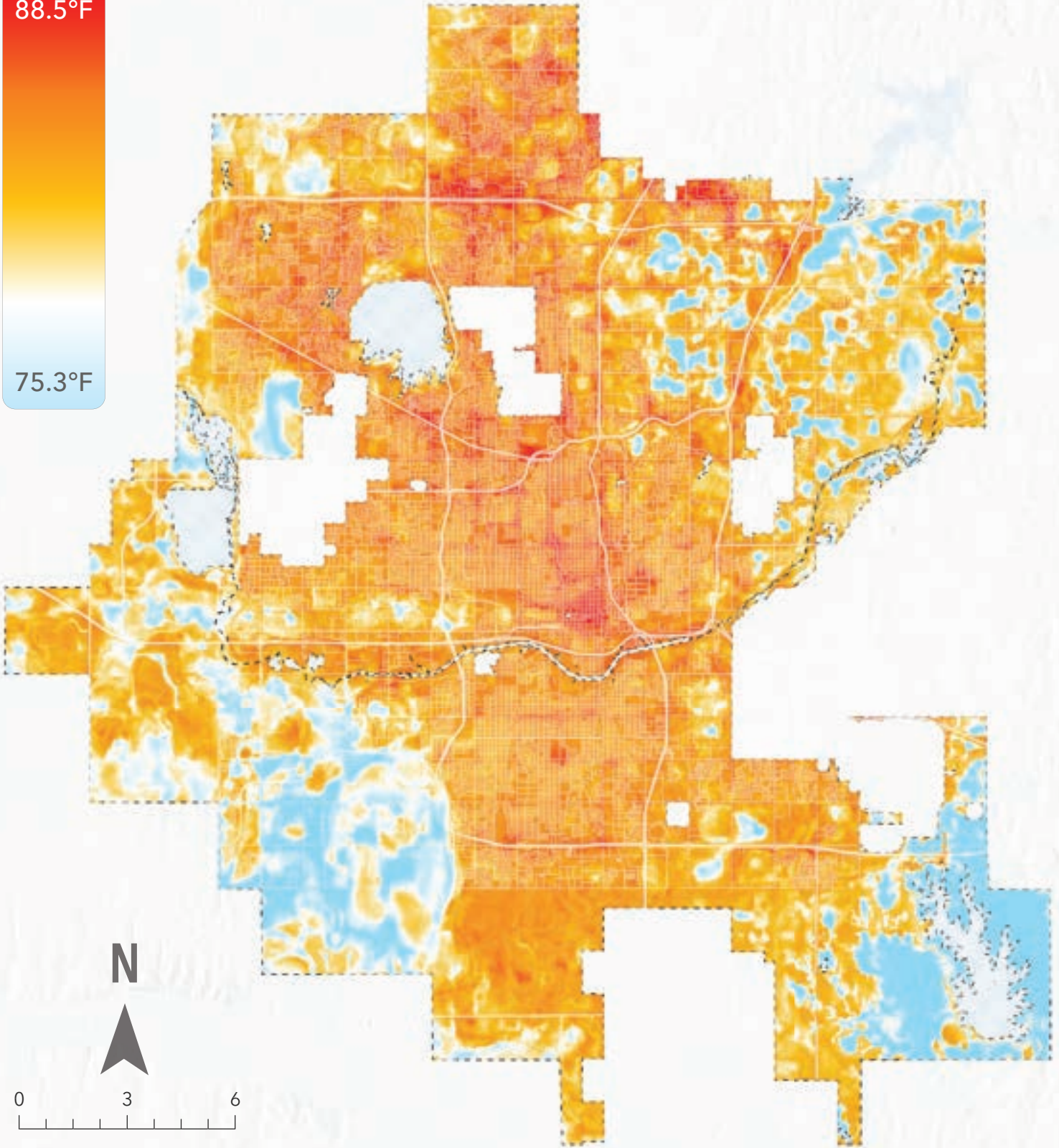
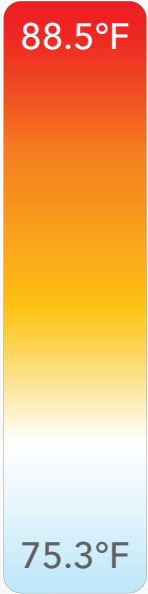
Temperature (6 - 7 am)





Morning Area-Wide Models

Temperature (6 - 7 am)



N



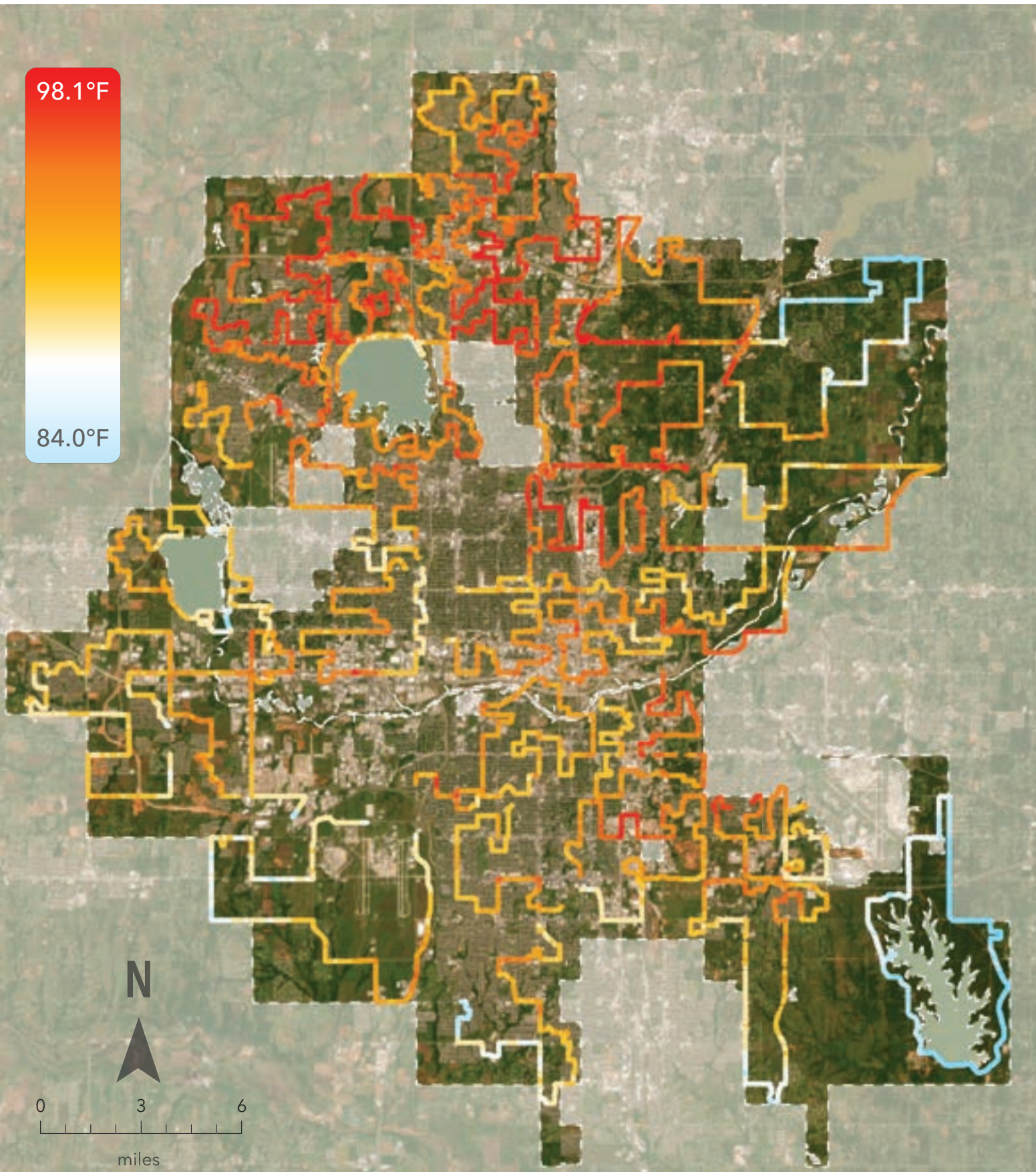
0 3 6

miles



Afternoon Traverse Points

Temperature (3 - 4 pm)



98.1°F

84.0°F

N

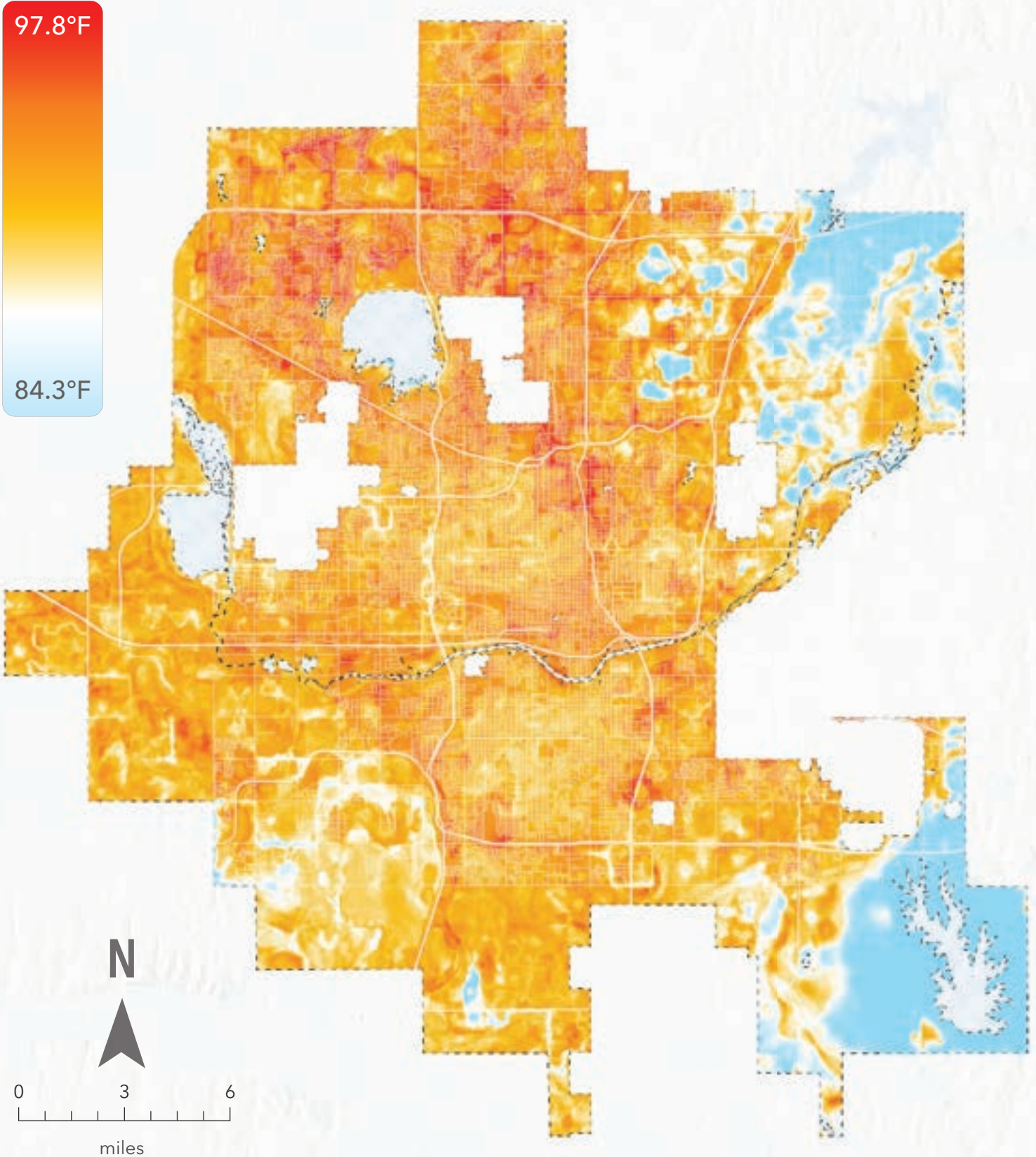
0 3 6

miles



Afternoon Area-Wide Models

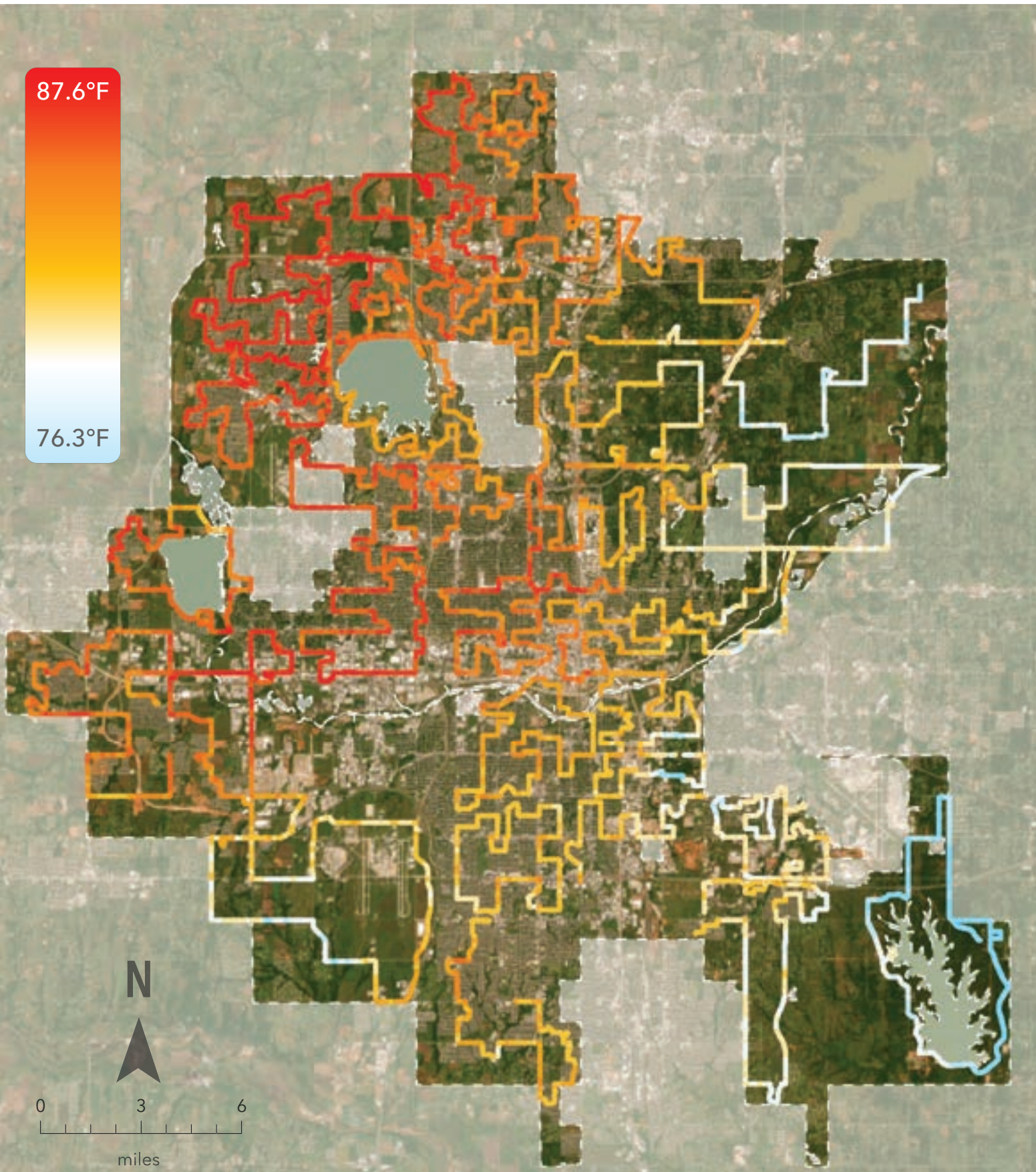
Temperature (3 -4 pm)





Evening Traverse Points

Temperature (7 - 8 pm)



87.6°F

76.3°F

N

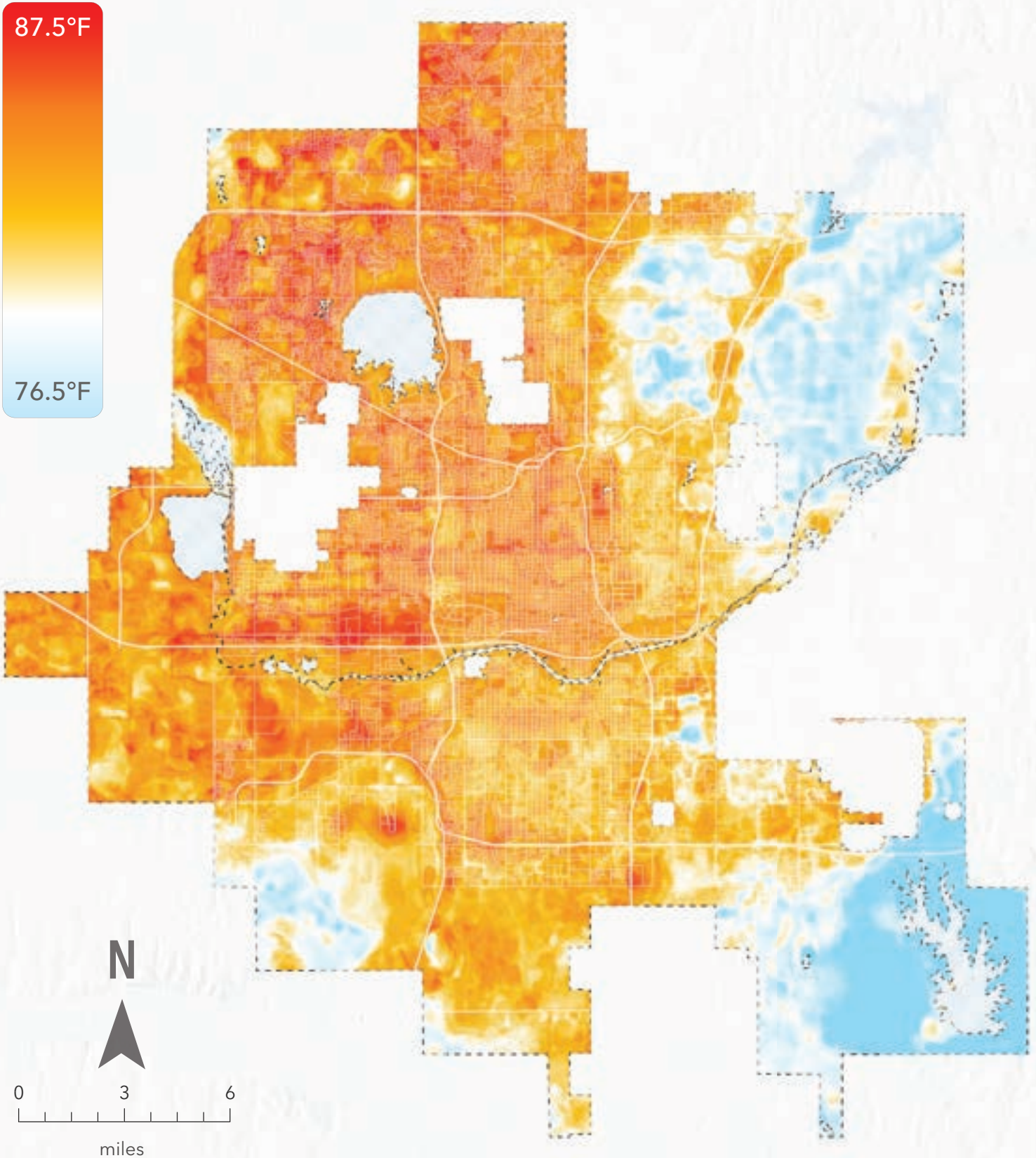
0 3 6

miles



Evening Area-Wide Models

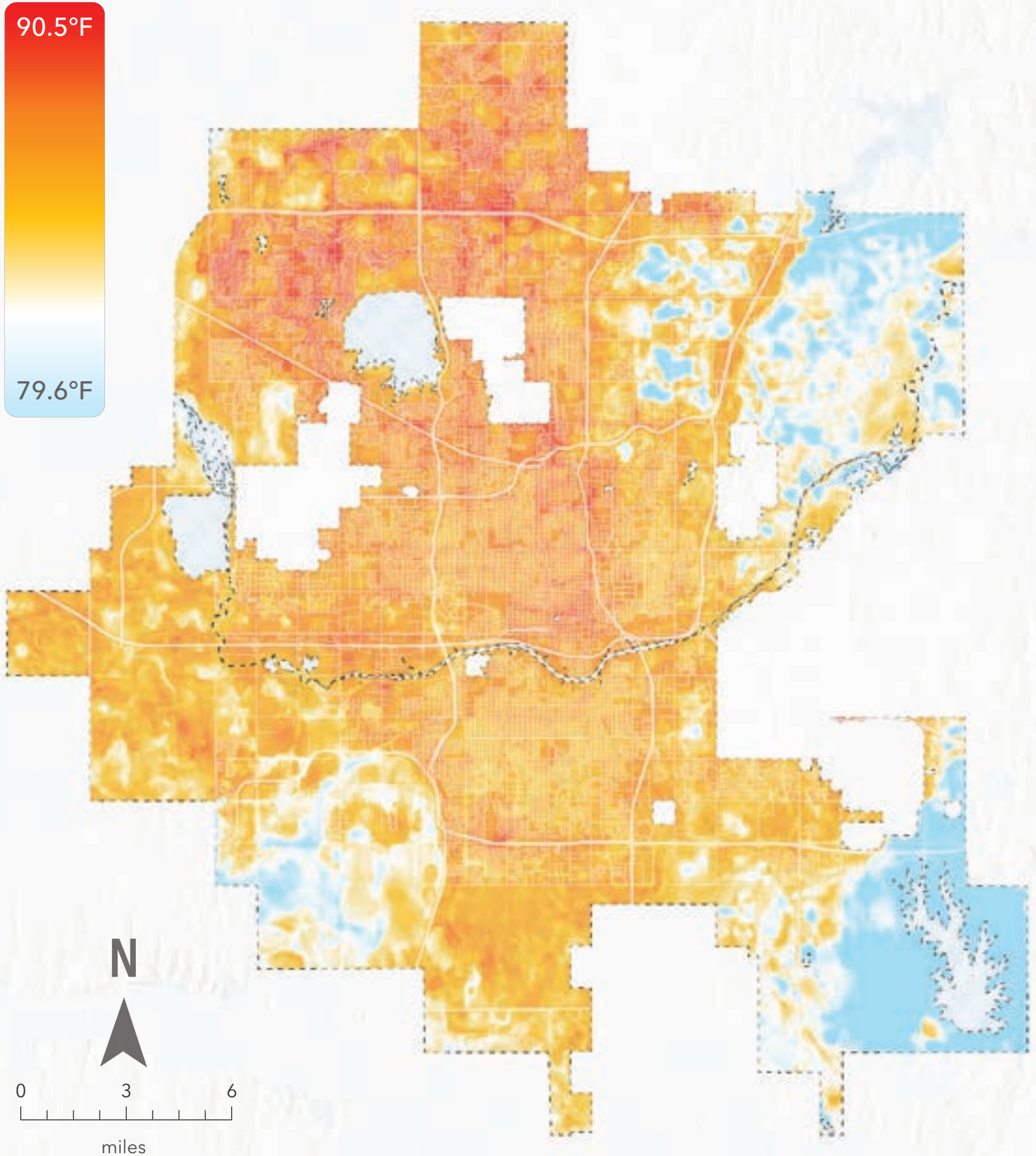
Temperature (7 - 8 pm)





Average Area-Wide Model

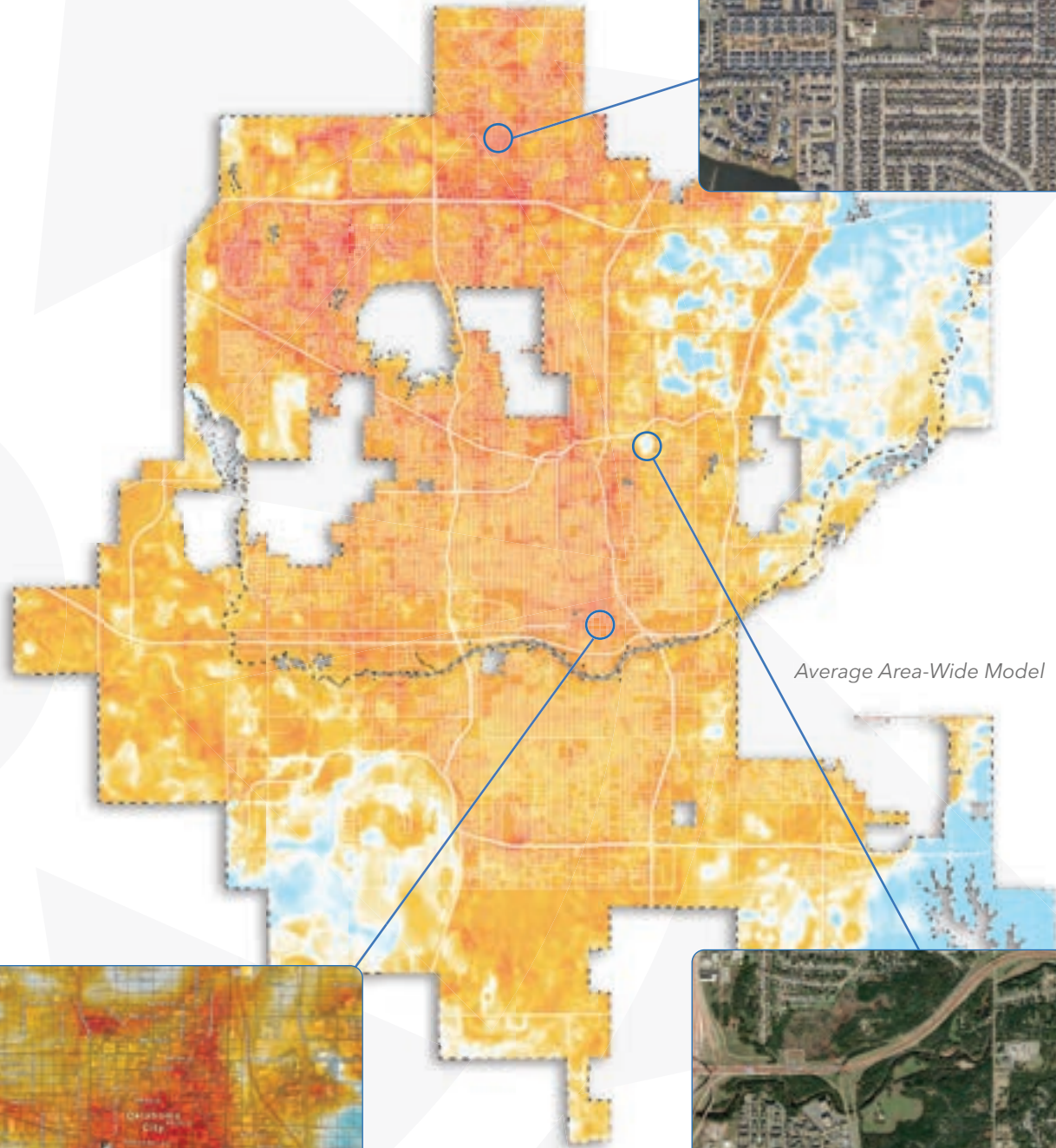
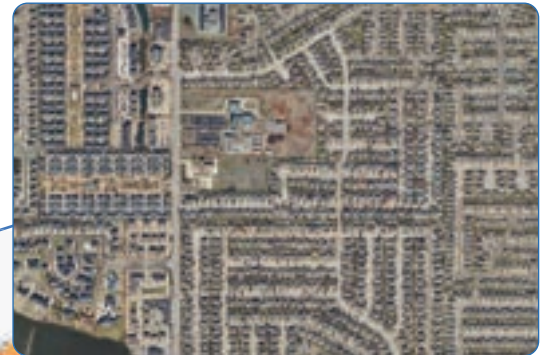
The average model is produced by averaging together the morning, afternoon and evening models with equal weight.



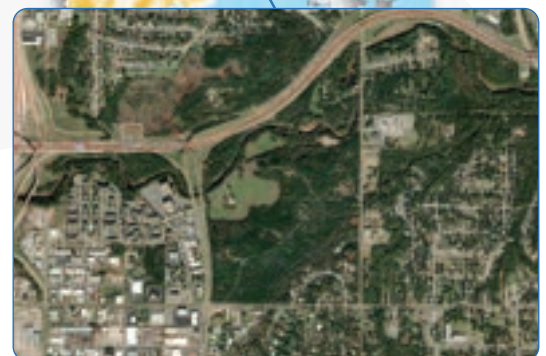
Initial Observations

The distribution of heat across a region often varies by qualities of the land and its use. Here are several observations of how this phenomenon may be occurring in your region.

Heat concentrates in these homogeneous suburban neighborhoods with high amounts of impervious surfaces and little natural space.



With such a large region, the GIS tool "Dynamic Range Adjustment" helps to see heat variation at smaller scales.

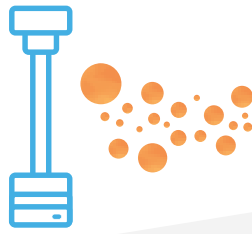


Open space and natural forested areas provide cool refuge to surrounding developed areas.

Modeling Method

The three key steps and geospatial processes that allow CAPA analysts to transform traverse point data into area-wide models of temperature.

1 Download & Filter



Download raw heat data from sensor SD cards

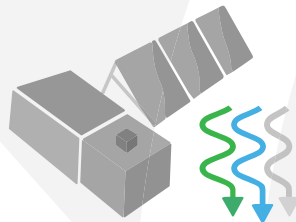


Compare data with field notes and debrief interview

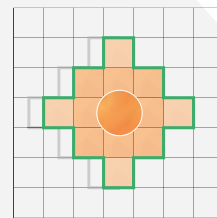


Trim data to proper time window, speed, and study area

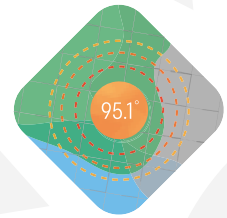
2 Integrate & Analyze



Download multi-band land cover rasters from Sentinel-2 satellite

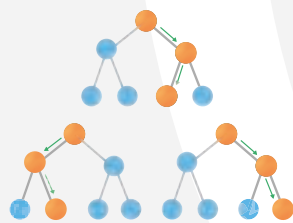


Transform land cover rasters using a moving window analysis

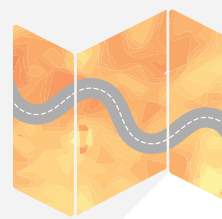


Calculate statistics of each land cover band across multiple radii

3 Predict & Validate



Combine heat and land cover data in Machine Learning model



Create predictive raster surface models of each period



Perform cross validation using 70:30 holdout method

The most relevant and recent publications include:

Shandas, V., Voelkel, J., Williams, J., & Hoffman, J., (2019). Integrating Satellite and Ground Measurements for Predicting Locations of Extreme Urban Heat. *Climate*, 7(1), 5. <https://doi.org/10.3390/cli7010005>

Voelkel, J., & Shandas, V. (2017). Towards Systematic Prediction of Urban Heat Islands: Grounding Measurements, Assessing Modeling Techniques. *Climate*, 5(2), 41. <https://doi.org/10.3390/cli5020041>

Accuracy Assessment*	
Model Period	Adjusted R-Squared
6 - 7 am	0.99
3 - 4 pm	0.99
7 - 8 pm	0.99

Accuracy Assessment

To assess the strength of our predictive temperature models, we employ a 70:30 "holdout cross-validation method," which consists of predicting 30% of the data with the remaining 70%, selected randomly. An 'Adjusted R-Squared' value of 1.0 is perfect predictability, and 0 is total lack of prediction. Additional information on this technique can be found at the following reference: Voelkel, J., and V Shandas, 2017. Towards Systematic Prediction of Urban Heat Islands: Grounding measurements, assessing modeling techniques. *Climate* 5(2): 41.

Field Data

Like all field campaigns, the collection of temperature and humidity data requires adherence to a specific set of protocols and experimental controls. In the event that unreported or undetected error is introduced during the data collection process, the accuracy of the resulting datasets and models may be compromised in quality. While our team has developed a multi-stage process for quality assurance and quality control (outlier removal), some errors can go unidentified and undetected, and thereby compromise the accuracy of the results. We suggest keeping this nature of field data collection in mind when reviewing the results.

Prediction Areas

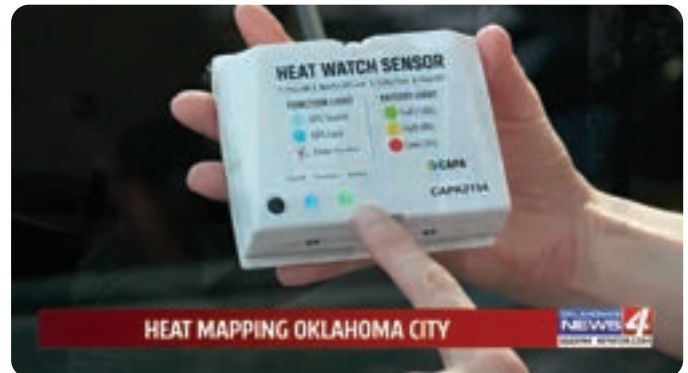
The traverse points used to generate the areas wide models do not cover every square mile of the studied area -- rather, we take a sampling approach to gather representative measurements across the diversity of land-use, land-cover, and biophysical attributes of each study area. We suggest keeping this sampling and modeling approach in mind when reviewing the results.



THE NORMAN
TRANSCRIPT
OU researchers receive grant to study heat islands in Oklahoma City



KGOU
Heat mapping project to highlight Oklahoma City's hottest neighborhoods



KOCO NEWS 5 abc
OKC takes part in nationwide effort to map out extreme heat impact on communities

KOSU | npr
Volunteers collect data on urban heat islands in Oklahoma City



Heat Watch data provides new and valuable descriptions of how heat is distributed across your city or region. With these new datasets in-hand, there are several short- and long-term next steps you can follow to build upon this work. We first suggest validating the information with local stakeholders, generating interpretations and meanings through further analysis, and/or employing the data across a myriad of applications for heat mitigation and heat preparedness. Consider how different communities and sectors are affected by these results. The collaboration between partners and volunteers who planned and conducted the campaign may also serve as a strong network for future efforts on heat.

Using GIS software you may investigate relationships between heat and the built environment using land use, canopy cover and impervious surface data; assess social vulnerability factors like age and income; and calculate impacts in specific sectors such as energy and public housing. The data may guide you in [identifying priority areas for tree planting](#), planning resilience hubs in high-need areas, or understanding how much heat is present along transportation routes to schools. Such questions and many others can all be better addressed using the high resolution ambient descriptions provided by Heat Watch data.

These new datasets may also prompt and support further research needs into the intersection of heat with overlapping natural hazards like air quality as well as the [indoor experience of residents during heat waves](#), and future projections of heat based on models of emissions levels and climate change. We know that increased temperatures will also lead to increased energy use and grid vulnerability. In fact, nearly all sectors of urban life are likely to be affected by rising temperatures and at inequitable rates of impact to our cities' populations.

Heat Action Plan

A significant longer-term application of Heat Watch results is building out a comprehensive and systematic approach to address the many physical, social and economic threats of extreme heat facing your communities. Developing a "Heat Action Plan" is essential for situating heat data within current conditions and stakeholder interests, defining local risk to extreme heat, and assembling actionable and place-based intervention strategies.

As plans can be complex documents requiring technical subject expertise, CAPA aims to support cities with an accessible Heat Action Plan product. This plan builds on Heat Watch data, synthesizes existing local plans, policies, and climate projections, collects social data from local communities, sets priorities, and offers recommendations for heat action at citywide and neighborhood levels. We capture baseline information about exposure, context, and potential risk, while revealing directions for deeper research, analysis, and strategy development. As a comprehensive document, CAPA's Heat Action Plan may serve as the central point of guidance and evaluation of progress towards local resilience to heat.



TABLE OF CONTENTS

1	Context	2
2	What is Heat Risk?	7
3	Heat Risk in Your City	13
	Spatial	14
	Climatological	16
	Social	18
	Economic/Infrastructural	20
	Ecological	22
4	Priority Geographies	25
5	Intervention Options	30
6	Recommendations / Next Steps	35

We are thrilled to be a part of your path towards heat resilience and look forward to continuing to build a better prepared and more climate-responsive world together!



CAPA
strategies



HEAT WATCH

Frequently Asked Questions (FAQ)

A. Data and Access

A1. How can I access the data from Heat Watch?

All Heat Watch data (traverses, models and metadata) are available on the Open Science Framework (OSF). When first delivered to campaign leaders, the OSF page is provided as a view-only link; once the results are approved by the local team, CAPA will update the OSF page to be publicly accessible. All Heat Watch data, this summary report, and metadata will then be available for download and use by the public.

A2. In what format are the data provided?

The traverse point data from each time period (morning, afternoon and evening) are provided as vector shapefiles. The models from each time period are provided as geo-tiff rasters at 10-meter resolution. In order to view and manipulate these data, GIS software is needed.

A3. What is the accuracy of the traverse point temperature measurements?

The Heat Watch sensor includes a temperature probe that is accurate to $\pm 0.5^{\circ}\text{C}$. The response time (the amount of time it takes for the sensor to accurately measure a change in temperature) is 1 second.

B. Relative Humidity and Heat Index

B1. Where are the relative humidity and heat index results, and why are only the temperature results displayed in this report?

The relative humidity measurements and heat index calculations are provided in the traverse shapefiles for each time period; heat index models are provided with the rasters. We focus on temperature data in the report because it is the most plainly understood variable and based more on direct measurements of the environment. Temperature then provides the basis for incorporating relative humidity to calculate heat index.

B2. What is the accuracy of the relative humidity measurements?

The accuracy of the relative humidity sensor is $\pm 3\%$.

Frequently Asked Questions (FAQ)

B3. What is heat index and how is it calculated?

Heat index is an approximation of the heat felt when the presence of humidity is felt in combination with temperature. We calculate heat index by combining the measured traverse point temperature with its corresponding relative humidity measurement using the same equations as advised by the National Weather Service. Note that there are multiple ways of calculating heat index at various thresholds. To learn more, visit <https://www.weather.gov/safety/heat-index>.

B4. Where can the relative humidity and heat index data be accessed?

All results are available through OSF, and the relative humidity and heat index data can be viewed and manipulated using GIS software.

C. Maps and Visualization

C1. How can I visualize the data and make maps similar to the report?

You can extract and print any map from this pdf report to use in media and other products. If you wish to visualize the data in similar style (colors, breaks, etc.) using a GIS tool, please see the CAPA Heat Watch Style Guide.

C2. Why do the maps show the temperature range of just that period (e.g. morning minimum temperature to morning maximum temperature), instead of the entire day (i.e. overall minimum to overall maximum)? Wouldn't this allow better visualization of how heat shifts throughout the day?

The temperature range of each time period is used in order to emphasize the distribution of heat within that specific time period. While the data can be visualized differently with the range from the entire day, the differences across the area then become much less apparent in the maps.

C3. Why are the ranges between traverses and models slightly different?

You may notice that for instance the maximum temperature in a traverse point dataset is 94.1°F, whereas the maximum temperature from its corresponding area-wide model is 94.5°F. The reason for this slight discrepancy is inherent to predictive modeling - all models introduce some degree of uncertainty and error. The best-fit model consists of many input variables that may produce a slightly higher or lower prediction of temperatures than measured by the traverses.