



United States Department of Agriculture

Office of the Secretary
Washington, D.C. 20250

The Honorable Mike DeWine
Governor
State of Ohio
Columbus, Ohio 43215

JUL 25 2019

Dear Governor DeWine:

On April 24, 2019, and April 30, 2019, the Ohio State Executive Director of the Farm Service Agency (FSA), U.S. Department of Agriculture (USDA), requested a primary county disaster designation for several Ohio counties due to losses caused by extreme cold, excessive rain, flooding, and the polar vortex that occurred from January 20 through February 1, 2019. At that time, USDA was unable to make a complete and accurate determination of production losses for the current crop year. On July 1, 2019, the Ohio State Office notified the National Office that all loss assessment reports were complete.

USDA reviewed the Loss Assessment Reports and determined that there were sufficient production losses to warrant a Secretarial natural disaster designation; therefore, I am designating all five counties as primary natural disaster areas. In accordance with section 321(a) of the Consolidated Farm and Rural Development Act, additional areas of your state and an adjacent state are named as contiguous disaster counties. Enclosed you will find documentation that provides a detailed list of all primary and contiguous counties impacted by this disaster.

A Secretarial disaster designation makes farm operators in primary counties and those counties contiguous to such primary counties eligible to be considered for certain assistance from FSA, provided eligibility requirements are met. This assistance includes FSA emergency loans. Farmers in eligible counties have 8 months from the date of a Secretarial disaster declaration to apply for emergency loans. FSA considers each emergency loan application on its own merits, taking into account the extent of production losses on the farm and the security and repayment ability of the operator.

Local FSA offices can provide affected farmers with further information.

Sincerely,

A handwritten signature in blue ink, reading "Sonny Perdue", is positioned below the word "Sincerely,".

Sonny Perdue
Secretary

Enclosure

Disaster Designation Areas for Ohio and a Contiguous State

Primary Counties:

Ohio	(5)			
Athens	Fairfield	Hocking	Licking	Washington

Contiguous Counties:

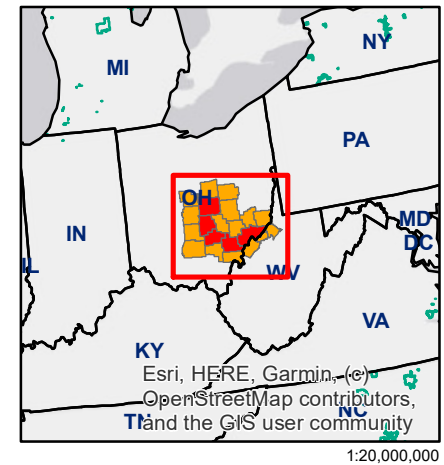
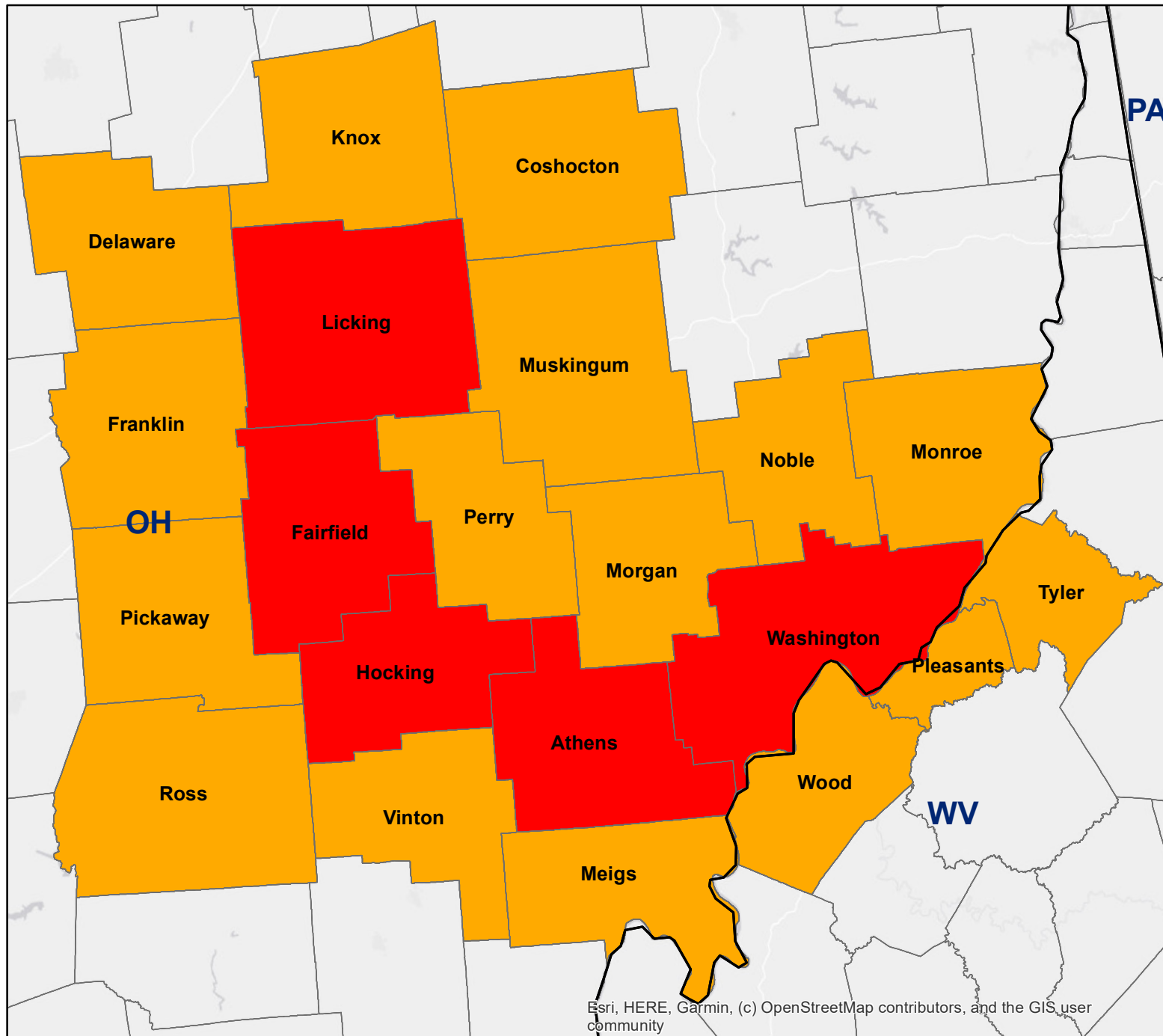
Ohio	(13)			
Coshocton	Knox	Morgan	Perry	Ross
Delaware	Meigs	Muskingum	Pickaway	Vinton
Franklin	Monroe	Noble		

In addition, in accordance with section 321(a) of the Consolidated Farm and Rural Development Act, counties in an adjacent state are named as contiguous disaster areas. That state, counties, and numbers are:

Contiguous Counties in an Adjacent State:

West Virginia	(3)	
Pleasants	Tyler	Wood

2019 Secretarial Declaration: OH 2019-07-02-999665



Secretarial Designations

July 2, 2019

- State Boundary
- County Boundary
- Tribal Lands
- Primary Counties: 5
- Contiguous Counties: 16



United States Department of Agriculture
Farm Service Agency

Program Delivery/Safety Net Division
Washington, D.C.
July 2, 2019

Esri, HERE, Garmin, (c) OpenStreetMap contributors, and the GIS user community

1:1,250,000



United States Department of Agriculture

Office of the Secretary
Washington, D.C. 20250

JUL 25 2019

The Honorable Mike DeWine
Governor
State of Ohio
Columbus, Ohio 43215

Dear Governor DeWine:

On June 28, 2019, and July 3, 2019, the Ohio State Executive Director of the Farm Service Agency (FSA), U.S. Department of Agriculture (USDA), requested a primary county disaster designation for seven Ohio counties due to losses caused by multiple disasters that occurred during the 2019 crop year.

USDA reviewed the Loss Assessment Reports and determined that there were sufficient production losses to warrant a Secretarial natural disaster designation; therefore, I am designating seven Ohio counties as primary natural disaster areas, in two separate disaster designations. In accordance with section 321(a) of the Consolidated Farm and Rural Development Act, additional areas of your state and an adjacent state are named as contiguous disaster counties. Enclosed you will find documentation that provides a detailed list of all primary and contiguous counties impacted by these disasters.

A Secretarial disaster designation makes farm operators in primary counties and those counties contiguous to such primary counties eligible to be considered for certain assistance from FSA, provided eligibility requirements are met. This assistance includes FSA emergency loans. Farmers in eligible counties have 8 months from the date of a Secretarial disaster declaration to apply for emergency loans. FSA considers each emergency loan application on its own merits, taking into account the extent of production losses on the farm and the security and repayment ability of the operator.

Local FSA offices can provide affected farmers with further information.

Sincerely,

A handwritten signature in blue ink, reading "Sonny Perdue", is positioned above the printed name and title.

Sonny Perdue
Secretary

Enclosure

Disaster Designation Areas for Ohio and a Contiguous State

Designation Number 1: The combined effects of excessive rain, flash flooding, flooding, excessive moisture, and extreme precipitation events that occurred during November 11, 2018, and continuing:

Primary Counties:

Ohio	(5)			
Auglaize	Paulding	Seneca	Wood	Wyandot

Contiguous Counties:

Ohio	(16)		
Allen	Hardin	Lucas	Putnam
Crawford	Henry	Marion	Sandusky
Defiance	Huron	Mercer	Shelby
Hancock	Logan	Ottawa	Van Wert

Contiguous County in an Adjacent State:

Indiana	(1)
Allen	

Designation Number 2: The combined effects of freeze, high winds, extreme cold, and the polar vortex that occurred during January 20 through April 30, 2019:

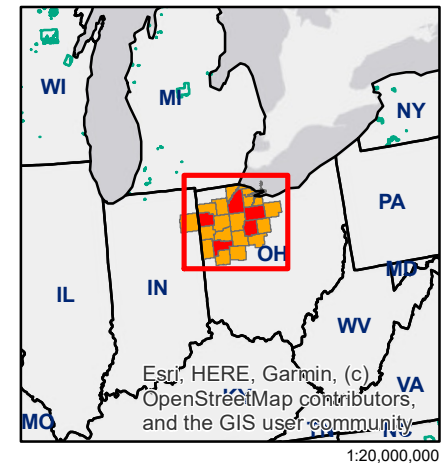
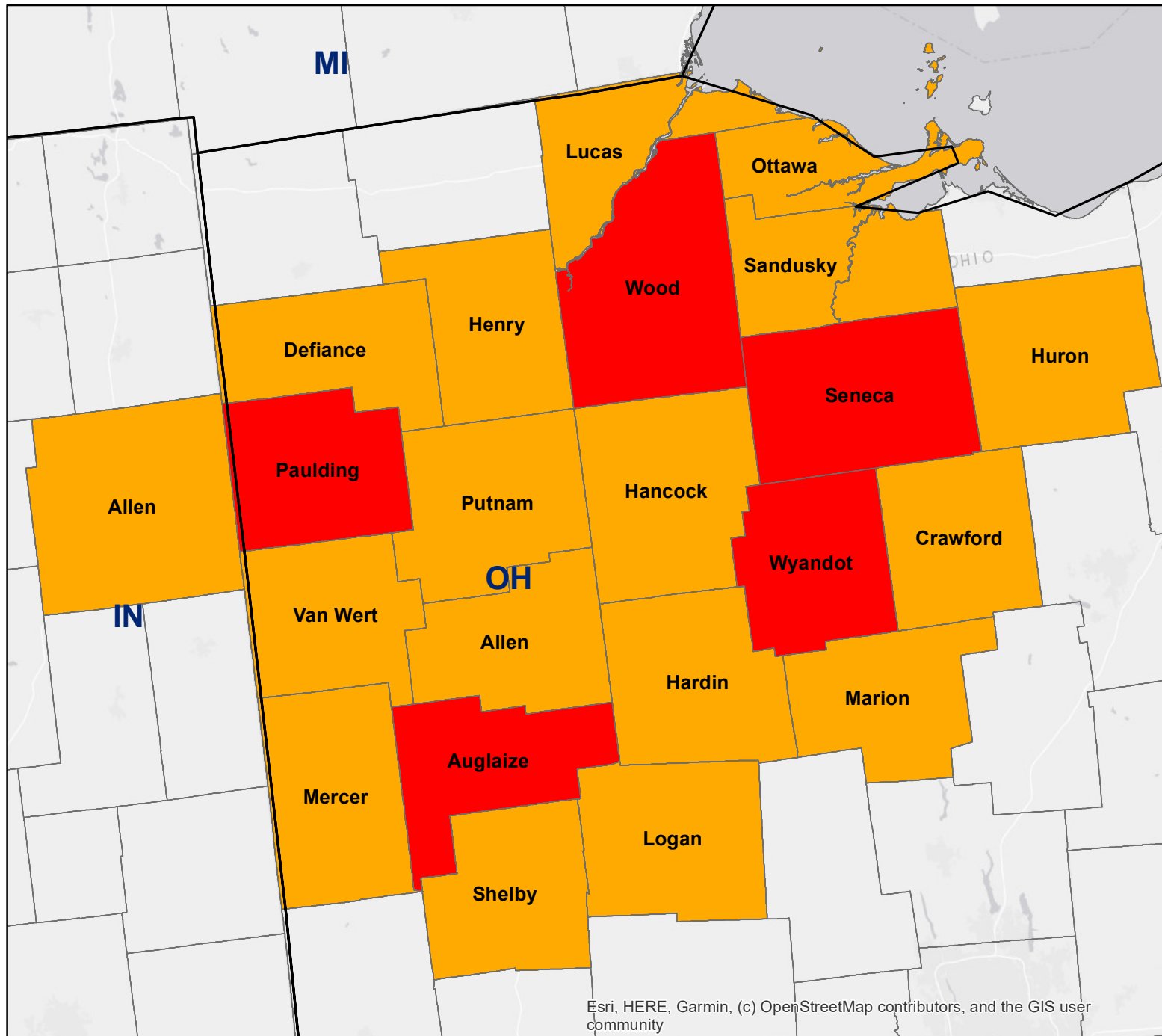
Primary Counties:

Ohio	(2)
Ottawa	Sandusky

Contiguous Counties:

Ohio	(5)			
Erie	Huron	Lucas	Seneca	Wood

2019 Secretarial Declaration: OH 2019-07-03-328518 - Disaster #1



Secretarial Designations

July 3, 2019

- State Boundary
- County Boundary
- Tribal Lands
- Primary Counties: 5
- Contiguous Counties: 17



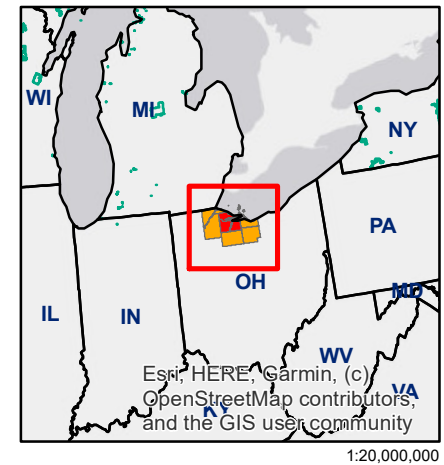
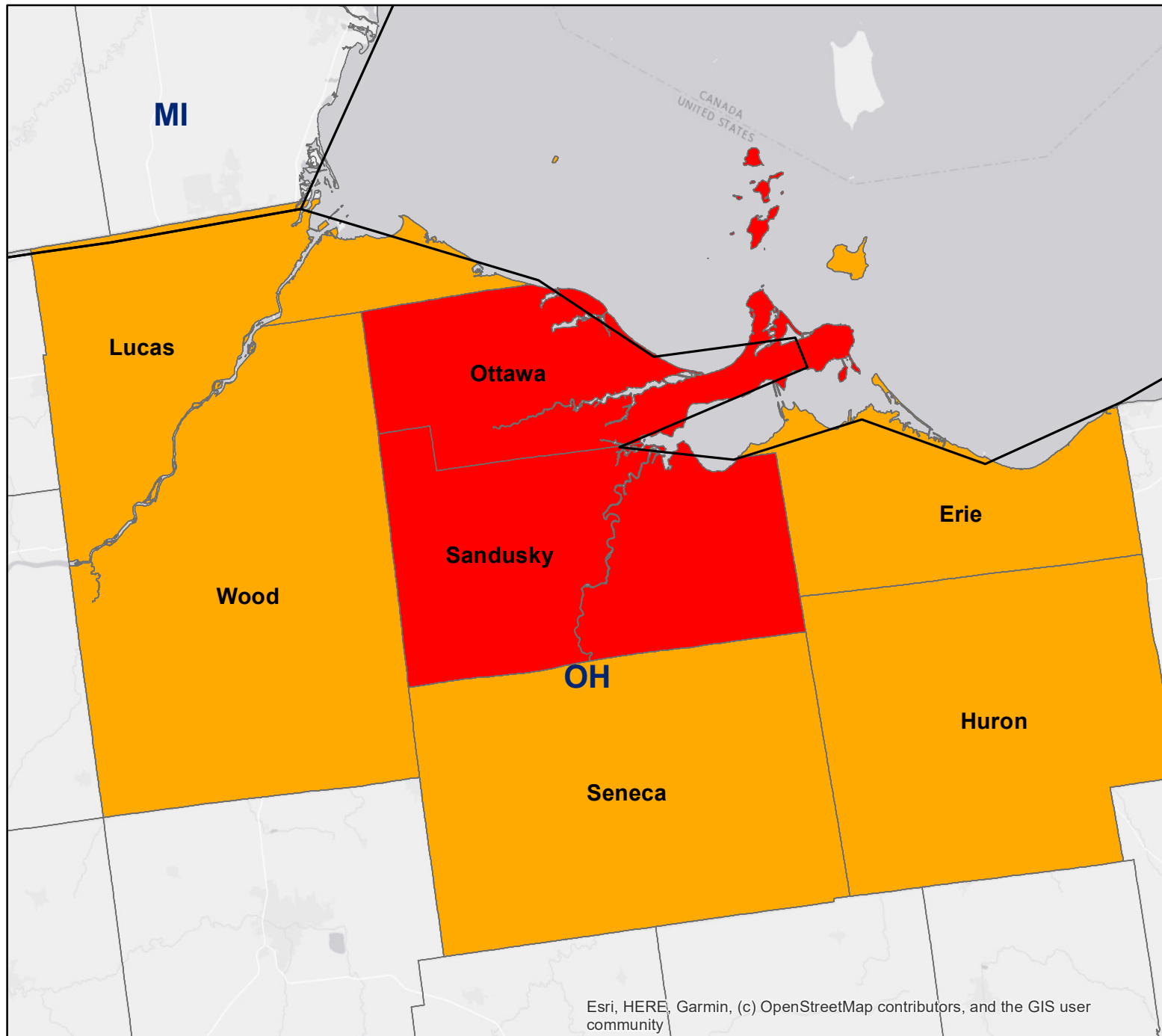
United States Department of Agriculture
Farm Service Agency

Program Delivery/Safety Net Division
Washington, D.C.
July 3, 2019

Esri, HERE, Garmin, (c) OpenStreetMap contributors, and the GIS user community

1:1,250,000

2019 Secretarial Declaration: OH 2019-07-03-328518 - Disaster #2



Secretarial Designations

July 3, 2019

- State Boundary
- County Boundary
- Tribal Lands
- Primary Counties: 2
- Contiguous Counties: 5



United States Department of Agriculture
Farm Service Agency

Program Delivery/Safety Net Division
Washington, D.C.
July 3, 2019

Esri, HERE, Garmin, (c) OpenStreetMap contributors, and the GIS user community

1:1,250,000