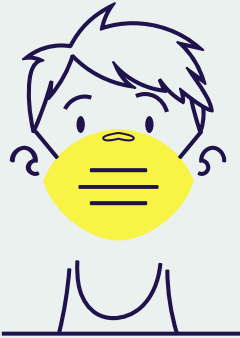


DEER PARK

COMMUNITY CITY

SCHOOLS

REOPENING PLAN 2020



CALENDAR UPDATE

- New student start date of Monday, August 24 (previously August 18)
- Students who will resume classes at school will attend school two days/week for the first two weeks. Students will be assigned a group (A or B) based on alphabet (first letter of last name).
- Week of August 24 and week of August 31:
 - Group A will attend Mondays and Tuesdays (8/24, 8/25, 8/31 & 9/1)
 - Group B will attend Thursdays and Fridays (8/27, 8/28, 9/3 & 9/4)
- ALL students start attending daily on Tuesday, Sept. 8.
- The rest of the school calendar will remain the same.

** The purpose of this delayed/staggered start to the school year is for teachers, students, and parents to get accustomed to the new protocols and to be able to practice the protocols in a small group before bringing the entire student body together.*

COUNTY ALERT LEVELS

Level 1 Public Emergency	Level 2 Public Emergency	Level 3 Public Emergency	Level 4 Public Emergency
<p>Active exposure and spread. Follow all current health orders.</p>	<p>Increased exposure and spread. Exercise high degree of caution. Follow all current health orders.</p>	<p>Very high exposure and spread. Limit activities as much as possible. Follow all current health orders.</p>	<p>Severe exposure and spread. Only leave home for supplies and services. Follow all current health orders.</p>
<div data-bbox="488 713 645 869" data-label="Image"> </div> <p data-bbox="378 926 788 964">In Person, 5 Days a Week</p>		<div data-bbox="1016 718 1294 811" data-label="Image"> </div> <p data-bbox="1020 885 1290 964">Possible Blended Learning</p>	<div data-bbox="1491 732 1605 798" data-label="Image"> </div> <p data-bbox="1406 885 1673 964">Possible Remote Learning Plan</p>

EDUCATIONAL OPTIONS FOR 2020 SCHOOL YEAR



STUDENTS IN SCHOOL DAILY
WITH SAFETY PRECAUTIONS

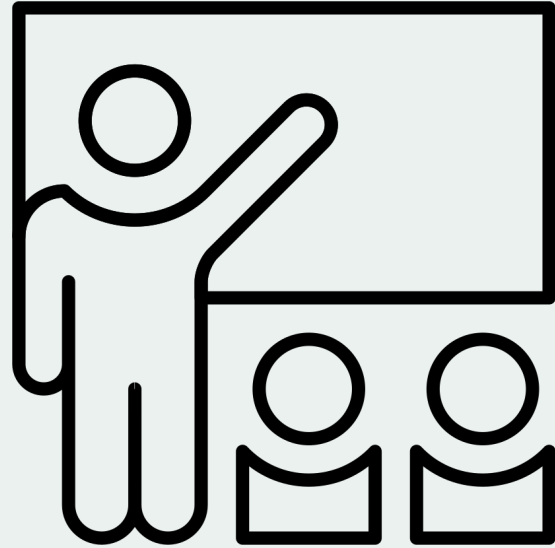


STUDENTS AT HOME DAILY
WITH INDIVIDUAL ONLINE
LEARNING

**Families will choose either option A or option B at the beginning of the school year. If a student chooses the online option, they must commit to that option for a minimum of a semester. At the end of the semester, they may choose to come back to the brick and mortar school building.*

OPTION A

STUDENTS IN
SCHOOL DAILY
WITH SAFETY
PRECAUTIONS



OPTION A

ENTERING AND LEAVING THE BUILDING

- ALL students will have their temperature checked upon entering the building using a non touch infrared thermometer.
- ALL students must wear a face mask when entering and leaving the building
- Maintain maximum distance from others when possible
- Report directly to assigned classroom upon entering the building

OPTION A

CLASSROOMS

- Maintain maximum distance from others when possible
- Wearing a mask is **REQUIRED** when entering, leaving and walking around the classroom.
- Wearing a mask is **REQUIRED** when working directly with a staff member and/or when working in small groups with peers.
- Wearing a mask is **HIGHLY RECOMMENDED** when seated at individual desks with proper distancing protocols in place. ** This could become a requirement if/when dictated by the Hamilton County Dept. of Health, Governor DeWine, or the Ohio Dept. of Education.*
- Students in grades 3-12 will clean desks prior to leaving classroom.

OPTION A

RESTROOMS

- Masks must be worn when in the hallways and restroom
- Follow posted guidelines/signage
- Travel on the right side of the hallway when possible

OPTION A

HALLWAYS/LOCKERS/COMMON AREAS

- Masks must be worn between class changes
- Travel on the right side of the hallway when possible
- Bring a water bottle, as drinking fountains will not be in use (water bottle filling stations will be operational)

OPTION A

DROP OFF/PICK UP/VISITORS

- Parents/guardians need to conduct a student wellness check including temperature check prior to sending your student to school each day. A student with a temperature of 100° F or higher should stay home.
 - Students will receive a no-contact temperature check each morning.
Any student with a temperature of 100° F or higher will be sent home.
- Parents/Guardians limit visits to school whenever possible.
- Follow posted guidelines/signage when entering the building.
- Face masks are required at all times while on school property, including parking lot/drop-off and pick-up.
- Visitors will not be permitted past the front office.

OPTION A

OFFICES/HEALTH SERVICES

- Use designated entrances and exits
- Maintain maximum physical distance from others when possible
- A face mask is required if a student is determined to have a fever of 100° F or higher or has symptoms
- Two nurses stations have been established:
 - Station A: students not exhibiting symptoms/no fever
 - Station B: students exhibiting symptoms/fever

OPTION A

CAFETERIA

- Jr/Sr High School
 - Students will have designated seats in the cafeteria
 - Students will be assigned one of six lunch periods to maintain social distancing
- Amity Elementary
 - Students will eat in the classroom
 - To-go lunches will be delivered to classrooms
 - Students will attend recess by grade level and each grade level will be kept separate from one another

OPTION A

OTHER CONSIDERATIONS

- Students will receive a no-contact temperature check each morning. Any student with a temperature of 100° F or higher will be sent home.
 - A student sent home with a fever of 100° F or higher will be advised to seek medical attention and if they are experiencing COVID-19 symptoms, it may be suggested by the medical professional that they be tested for the virus.
 - Students experiencing symptoms will be excluded from school until they have been symptom free for 72 hours without the use of fever reducing medications.
 - Symptoms that warrant exclusion from school include the following: fever greater than 100° F, chills, rigors, myalgia, headache, sore throat, new olfactory and taste disorder, cough, shortness of breath, difficulty breathing.
 - If it's determined that a child's symptoms aren't related to a communicable disease such as COVID-19, then the child's medical professional can determine when the child can return to school.

OPTION A

OTHER CONSIDERATIONS

- If the school learns that a student within the school tests positive for COVID-19, they will be required to quarantine for 10 days from the day of the test and can return to school on day 11 as long as days 8, 9, and 10 are symptom free. The student must also receive clearance from the Hamilton County Public Health Department stating that they may return to school.
- If the school learns that a student who was attending school tests positive for COVID-19, all students who have been within 6 feet of the individual who tested positive for a cumulative time of 15+ minutes anytime throughout the day will be required to quarantine for 14 days. All students who are required to quarantine must be fever-free without fever reducing medication for 72 hours and be symptom free in order to return to school.

OPTION A

- For purposes of this plan, minimum social distancing will be set at three feet.
- Teachers have the authority to require masks in their individual classrooms.

OPTION B



STUDENTS AT
HOME DAILY WITH
INDIVIDUAL
ONLINE LEARNING

GRADES K-5: ACCELERATE
EDUCATION

GRADES 6-12: APEX

OPTION B

GENERAL OVERVIEW

- Instruction will be delivered through an online academic platform. Instruction will not be delivered by Deer Park teachers.
- Students will need to set a schedule to stay paced to complete all required work for classes.
- Due to standards being covered and the continuity of grade transfers, a student who decides they would like to return to traditional instruction may only do so at the semester.
- Students will have access to core classes and select elective/specials classes
- Students will earn grades for their courses.
- Students may continue to participate in sports and extra-curricular activities at Deer Park Schools.
- If state or local regulations require a school closure, students on Plan B will continue with instruction as scheduled.
- Students and parents will have a Deer Park staff member assigned to them who will act as a liaison to assist with communication and questions.

OPTION B

K-5

Accelerate Education



6-12

APEX Learning



QUESTIONS?

[Click here](#) for Deer Park
Schools' COVID-19
Information Page

