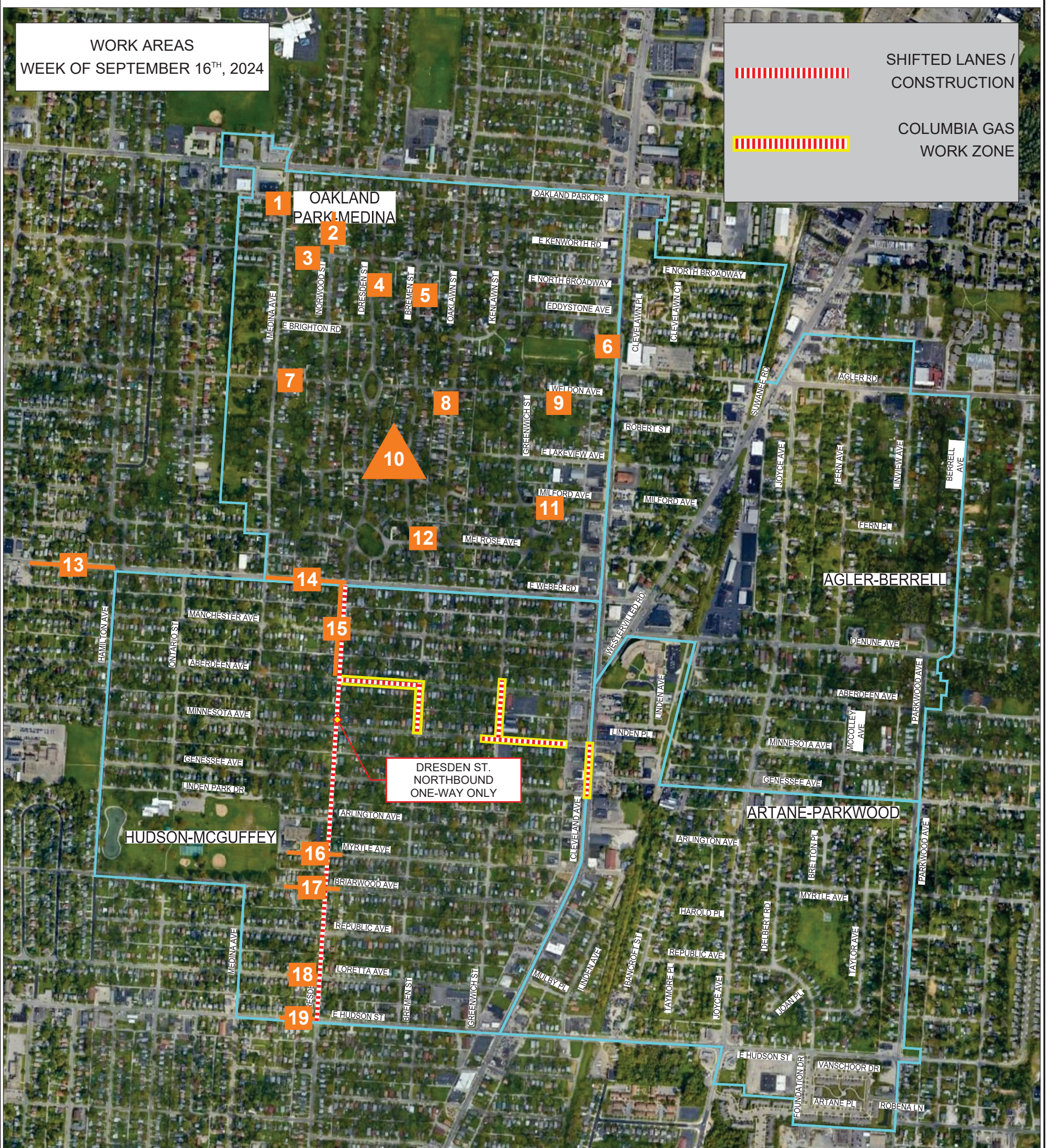


WORK AREAS
WEEK OF SEPTEMBER 16TH, 2024

SHIFTED LANES /
CONSTRUCTION

COLUMBIA GAS
WORK ZONE



OAKLAND PARK-MEDINA

- 1) 3153 MEDINA AVE. -- SANITARY LATERAL LINING BY BLD.
- 2) 3097-3129 NORWOOD ST. -- SANITARY LATERAL LINING BY BLD.
- 3) 1491-1501 E. NORTH BROADWAY-- SANITARY LATERAL LINING BY BLD.
- 4) 3064 DRESDEN ST. -- SANITARY LATERAL LINING BY BLD.
- 5) 3042 BREMEN ST. -- SANITARY LATERAL LINING BY BLD.
- 6) 2973 CLEVELAND AVE. -- SANITARY LATERAL LINING BY BLD.
- 7) 1457-1485 WELDON AVE. -- SANITARY LATERAL LINING BY BLD.
- 8) 2927 OAKLAWN ST. -- SANITARY LATERAL LINING BY BLD.
- 9) 1731 WELDON AVE. -- SANITARY LATERAL LINING BY BLD.
- 10) VARIOUS PUNCH LIST ITEMS BY IRONSITE.
- 11) 1698 MILFORD AVE. -- SANITARY LATERAL LINING BY BLD.
- 12) 1574 MELROSE AVE. -- SANITARY LATERAL LINING BY BLD.

HUDSON-MCGUFFEY

- 13) 1177-1272 E. WEBER RD. -- PERMEABLE PAVERS INSTALLATION BY TRUCCO CONSTRUCTION.
- 14) 1411-1492 E. WEBER RD. -- PERMEABLE PAVERS INSTALLATION BY TRUCCO CONSTRUCTION.
- 15) 2666-2762 DRESDEN ST. -- GREEN INFRASTRUCTURE INSTALLATION BY TRUCCO CONSTRUCTION.
- 16) 1399-1445 MYRTLE AVE. -- SANITARY LATERAL LINING BY BLD.
- 17) 1394-1440 BRIARWOOD AVE. -- SANITARY LATERAL LINING BY BLD.
- 18) 1391-1405 LORETTA AVE. -- SANITARY LATERAL LINING BY BLD.
- 19) 1384-1400 E. HUDSON ST. -- SANITARY LATERAL LINING BY BLD.

