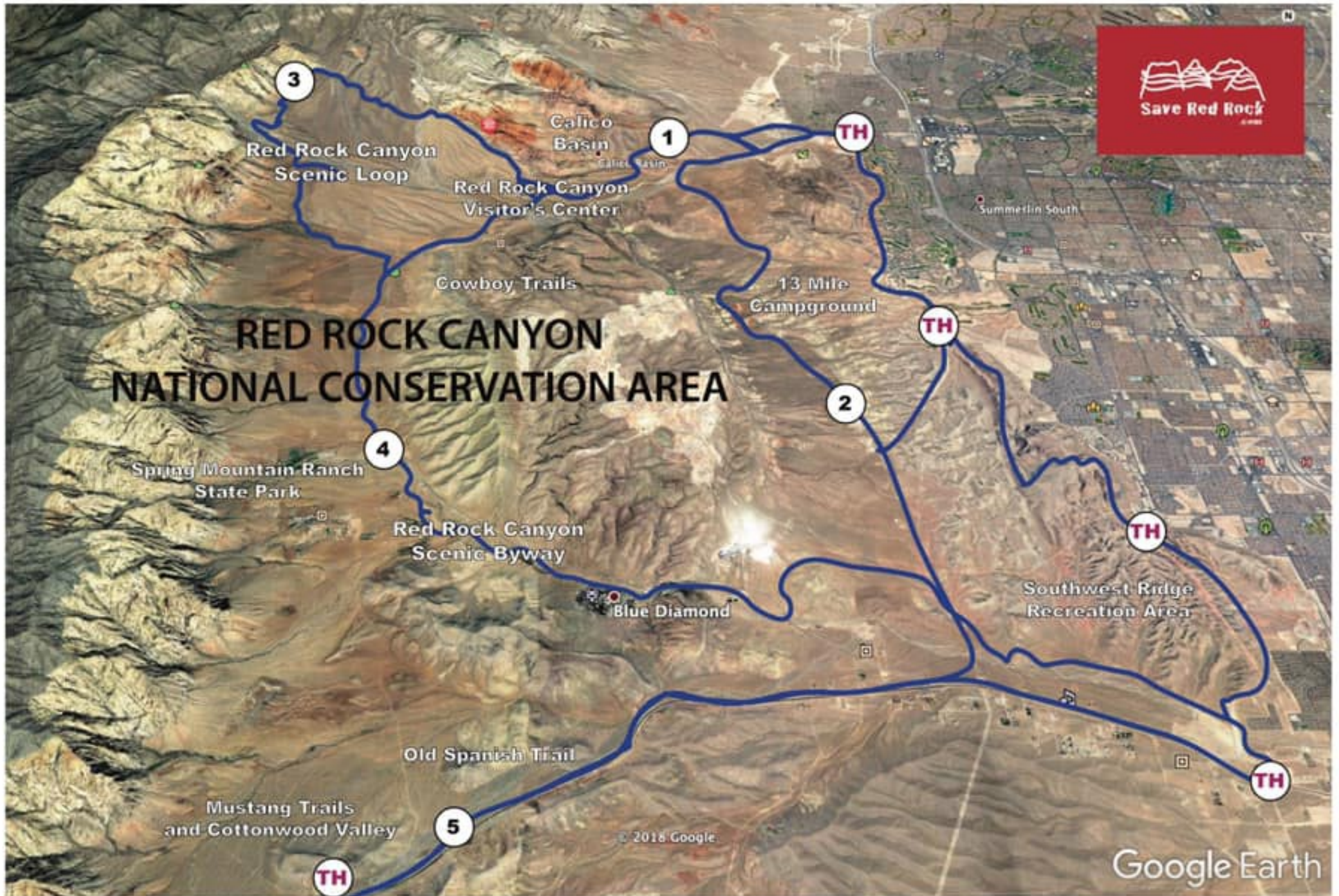


# RED ROCK LEGACY TRAILS

Conceptual Multi-Use Bike Path Map, January 2020, by the Red Rock Legacy Trails Partnership



**\*Conceptual Ride Map. Official trail naming/routing to be determined through the public process.**

- 1** TORTOISE AND HARE TRAIL\*  
10 mile out and back to Red Rock Scenic Loop Entrance from North TH
- 2** GILA MONSTER LOOP\*  
20 mile loop through Red Rock Campground and Southwest Ridge
- 3** RED ROCK SCENIC LOOP  
15 mile one way scenic loop shared with cars, entrance fee required
- 4** COYOTE AND ROADRUNNER LOOP\*  
32 mile loop along Red Rock Canyon Scenic Byway
- 5** OLD SPANISH TRAIL\*  
18 mile out and back to Late Night Trail Head from Mountain's Edge Trail Head